

LOCKWOOD SURVEY CORPORATION LIMITED

CONTRACT # G 3174
FLIGHT # 5
DATE FLOWN SEPT 3/65
AIRCRAFT MLL
FLYING HEIGHT 200'

PROFILES CHART SPEED
GULF MAGNETOMETER Mk III 4"/MINUTE
SENSITIVITY 1200y
APN-1 RADIO ALTIMETER /MINUTE
SENSITIVITY

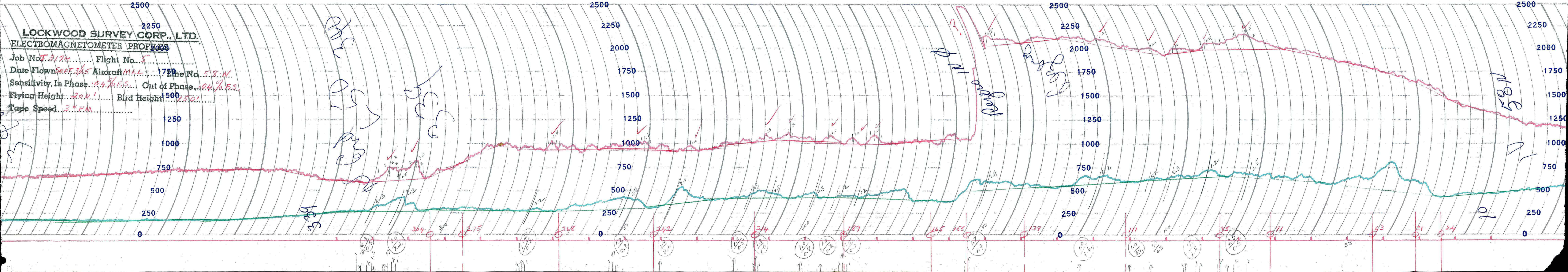
LINE No. 58-N

017373

LOCKWOOD SURVEY CORP., LTD.
ELECTROMAGNETOMETER PROFILES.

Job No..... Flight No.....
Date Flown..... Aircraft..... Line No.....
Sensitivity, In Phase..... Out of Phase.....
Flying Height..... Bird Height.....
Tape Speed.....

DLK



LOCKWOOD SURVEY CORP., LTD.
ELECTROMETER PROFILE

Job No. 3174 Flight No. 5
 Date Flown SEPT. 3/45 Aircraft MAL Line No. 58-N
 Sensitivity, In Phase 0.4% F.S. Out of Phase 10.4% F.S.
 Flying Height 200' Bird Height 150'
 Tape Speed 34 PM

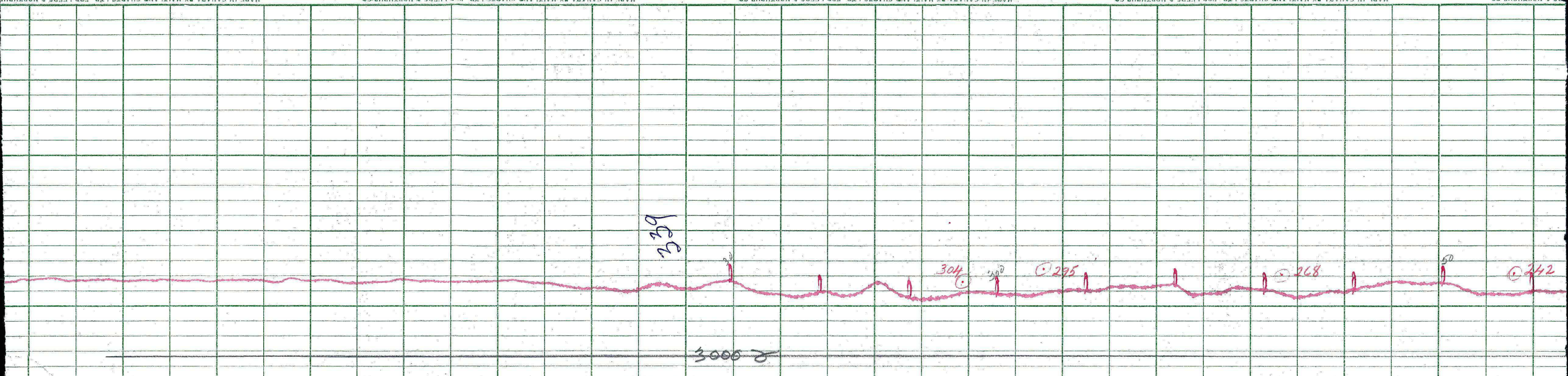
Handwritten: 100
 150

Handwritten: 100
 150

Handwritten: 100
 150

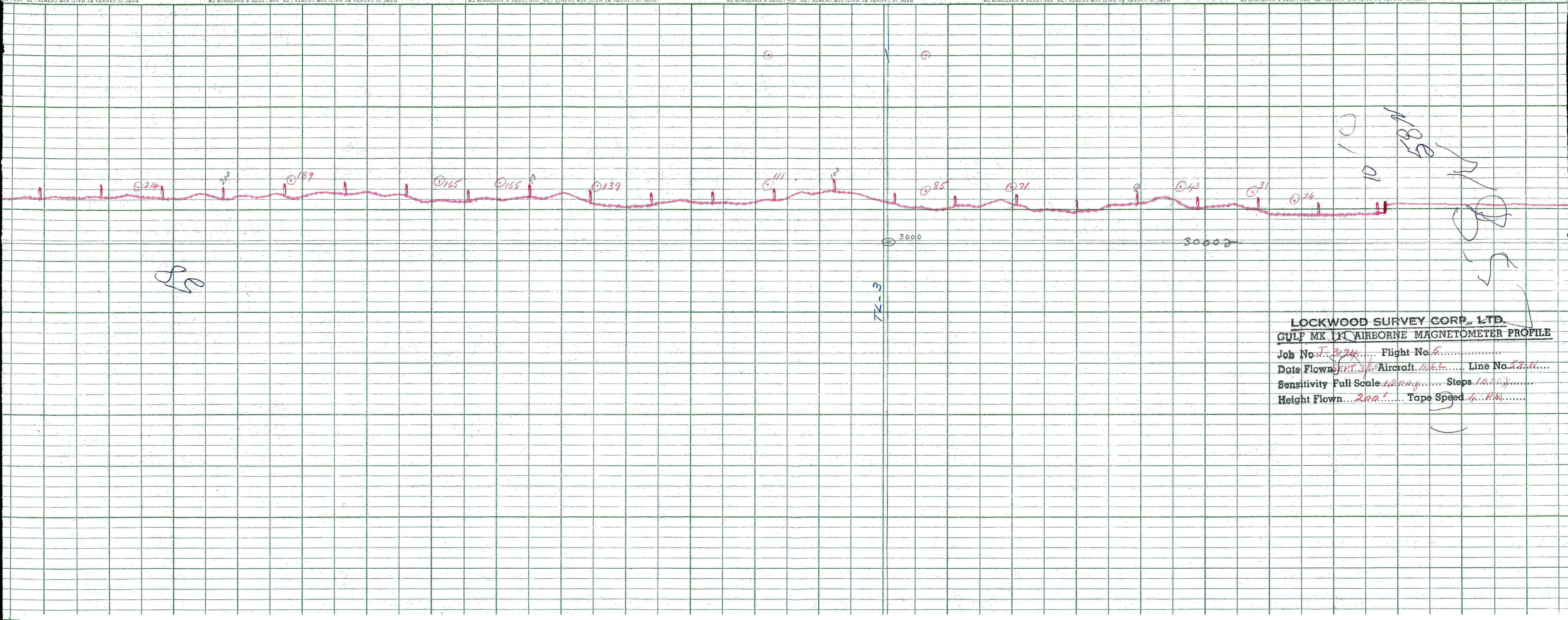
Handwritten: 100
 150

Handwritten: 100
 150



LOCKWOOD SURVEY CORP., LTD.
GULF MK 111 AIRBORNE MAGNETOMETER PROFILE
 Job No. J-3174 Flight No. 5
 Date Flown SEPT-3/64 Aircraft M44 Line No. 58-N
 Sensitivity Full Scale 1200 Steps 1000
 Height Flown 200' Tape Speed 4 RPM

Handwritten notes:
 2000
 50
 2000



LOCKWOOD SURVEY CORP., LTD.
GULF MK IX AIRBORNE MAGNETOMETER PROFILE
 Job No. J-3124 Flight No. 5
 Date Flown SEPT. 3/54 Aircraft M4L Line No. 58.11
 Sensitivity Full Scale 1200γ Steps 100γ
 Height Flown 200' Tape Speed 4 P.M.