

LOCKWOOD SURVEY CORPORATION LIMITED

CONTRACT # G-3174
FLIGHT # 5
DATE FLOWN SEPT 3/65
AIRCRAFT M66
FLYING HEIGHT 200'

PROFILES
GULF MAGNETOMETER Mk III 4"/MINUTE
SENSITIVITY 1200x
APN-1 RADIO ALTIMETER /MINUTE
SENSITIVITY

LINE No. 61-N

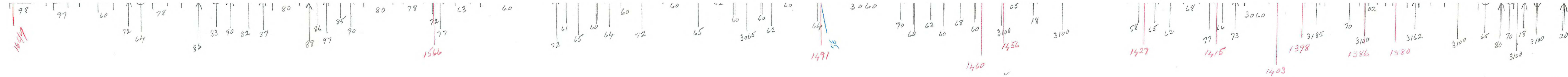
017376

LOCKWOOD SURVEY CORP., LTD.
ELECTROMAGNETOMETER PROFILES.

Job No..... Flight No.....
Date Flown..... Aircraft..... Line No.....
Sensitivity, In Phase..... Out of Phase.....
Flying Height..... Bird Height.....
Tape Speed.....

G-3174
T-61-N
SEPT 3/65
FLT 5

T.B.



1649

1647

1600

1566

50

1551

1491

1400

1456

50

1429

1415

1403

1398

1380

1356

1351

1350

119

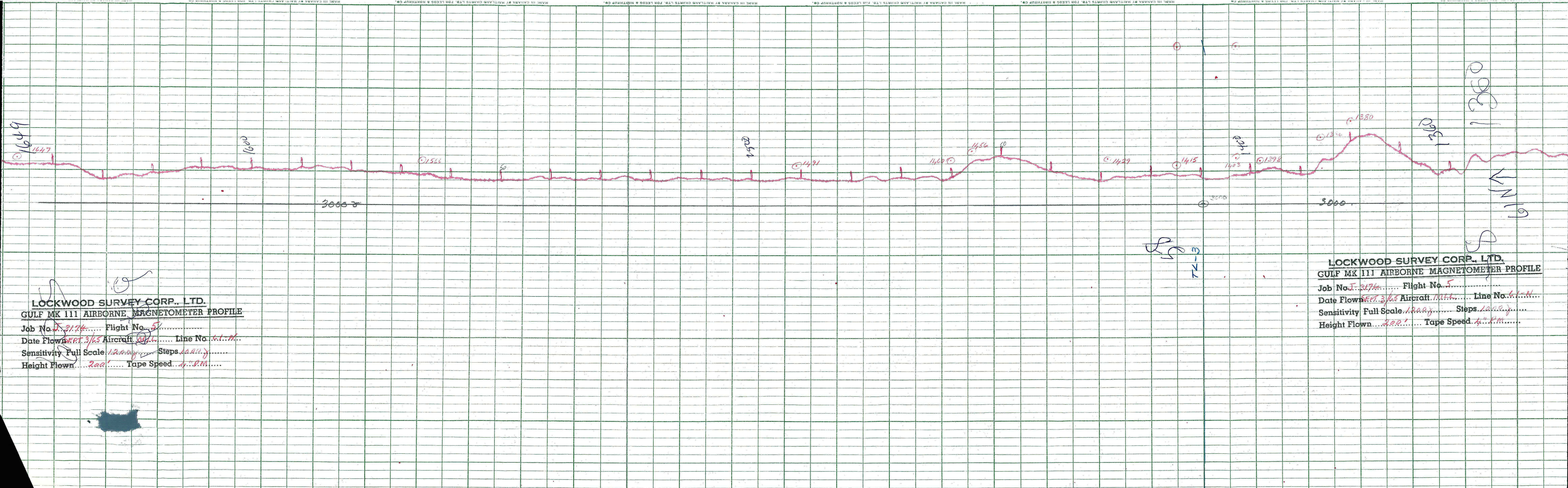
LOCKWOOD SURVEY CORP., LTD.
GULF MK 111 AIRBORNE MAGNETOMETER PROFILE
 Job No. J-3174 Flight No. 5
 Date Flown SEPT. 3/65 Aircraft 107L Line No. 61-N
 Sensitivity Full Scale 1200γ Steps 100γ
 Height Flown 200' Tape Speed 4" P.M.

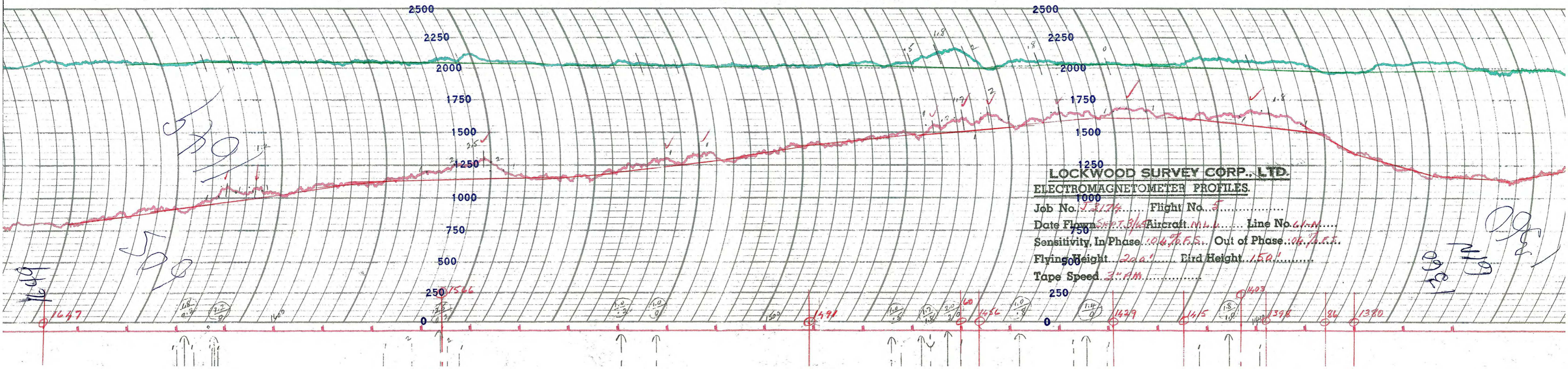
LOCKWOOD SURVEY CORP., LTD.
GULF MK 111 AIRBORNE MAGNETOMETER PROFILE
 Job No. J-3174 Flight No. 5
 Date Flown SEPT. 3/65 Aircraft 107L Line No. 61-N
 Sensitivity Full Scale 1200γ Steps 100γ
 Height Flown 200' Tape Speed 4" P.M.

TK-3

3000

3000





LOCKWOOD SURVEY CORP., LTD.
ELECTROMETER PROFILES.

Job No. 3174..... Flight No. 5.....
 Date Flown SEP. 7, 1945 Aircraft M.L.U...... Line No. 61-A.....
 Sensitivity, In Phase 10.4% F.S. Out of Phase 10.7% F.S.
 Flying Height 200'..... Bird Height 150'.....
 Tape Speed 3" P.M......

Handwritten: 1647

Handwritten: 1600

Handwritten: 1566

Handwritten: 1500

Handwritten: 1491

Handwritten: 1456

Handwritten: 1429

Handwritten: 1415

Handwritten: 1398

Handwritten: 1370

Handwritten: 1647