

LOCKWOOD SURVEY CORPORATION LIMITED

CONTRACT # G-3174
FLIGHT # 5
DATE FLOWN SEPT 3/65
AIRCRAFT MLL
FLYING HEIGHT 200'

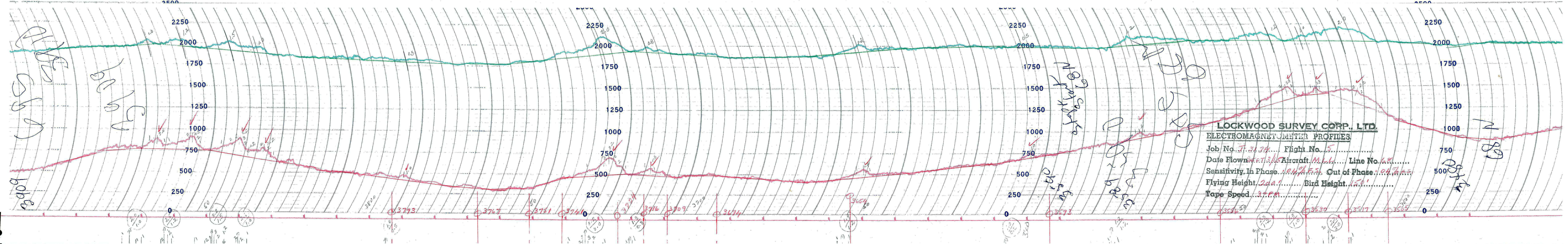
PROFILES
GULF MAGNETOMETER Mk III 4"/MINUTE
SENSITIVITY 1200x
APN-1 RADIO ALTIMETER /MINUTE
SENSITIVITY

LINE No. 68-N

017383

LOCKWOOD SURVEY CORP., LTD.
ELECTROMAGNETOMETER PROFILES.

Job No..... Flight No.....
Date Flown..... Aircraft..... Line No.....
Sensitivity, In Phase..... Out of Phase.....
Flying Height..... Bird Height.....
Tape Speed.....



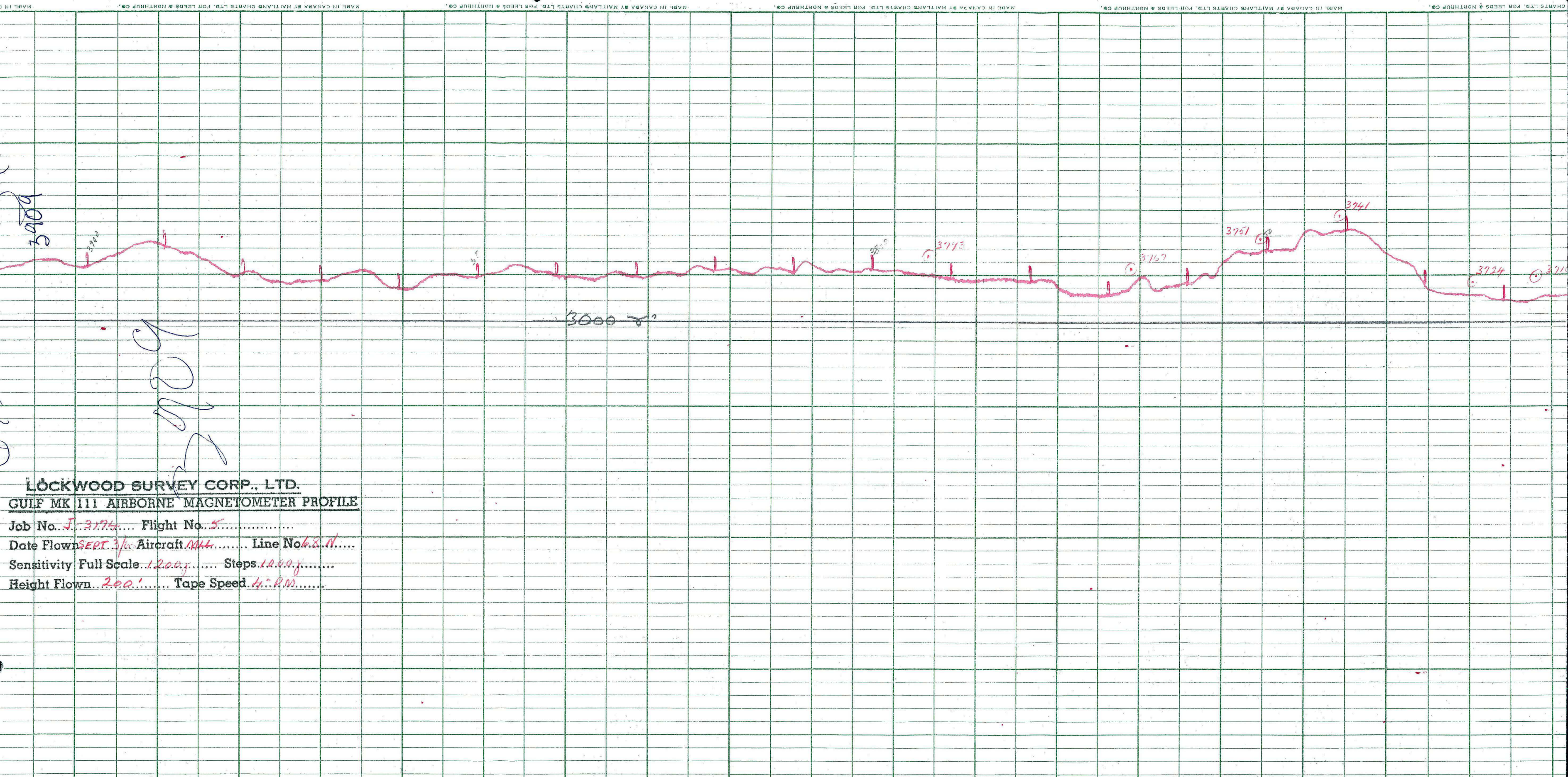
LOCKWOOD SURVEY CORP., LTD.
ELECTROMAGNETOMETER PROFILES

Job No. *J-3174* Flight No. *5*
 Date Flown *Sept. 3/5* Aircraft *M.L.B.* Line No. *68*
 Sensitivity In Phase *104%* Out of Phase *104%*
 Flying Height *200'* Bird Height *150'*
 Tape Speed *37 P.M.*

Top of hill
Top of hill
Top of hill

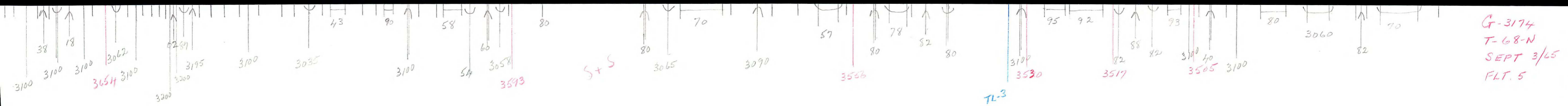
No part of the hill
Top of hill
Top of hill

Top of hill



LOCKWOOD SURVEY CORP., LTD.
GULF MK 111 AIRBORNE MAGNETOMETER PROFILE

Job No. J-3774 Flight No. 5
 Date Flown SEPT. 3/6 Aircraft M44 Line No. 68-N
 Sensitivity Full Scale 1200γ Steps 1000γ
 Height Flown 200' Tape Speed 4" P.M.



G-3174
 T-68-N
 SEPT 3/65
 FLT. 5

T.B.

G-3174
T-68 N
SEPT 3/65
FLT 5

