

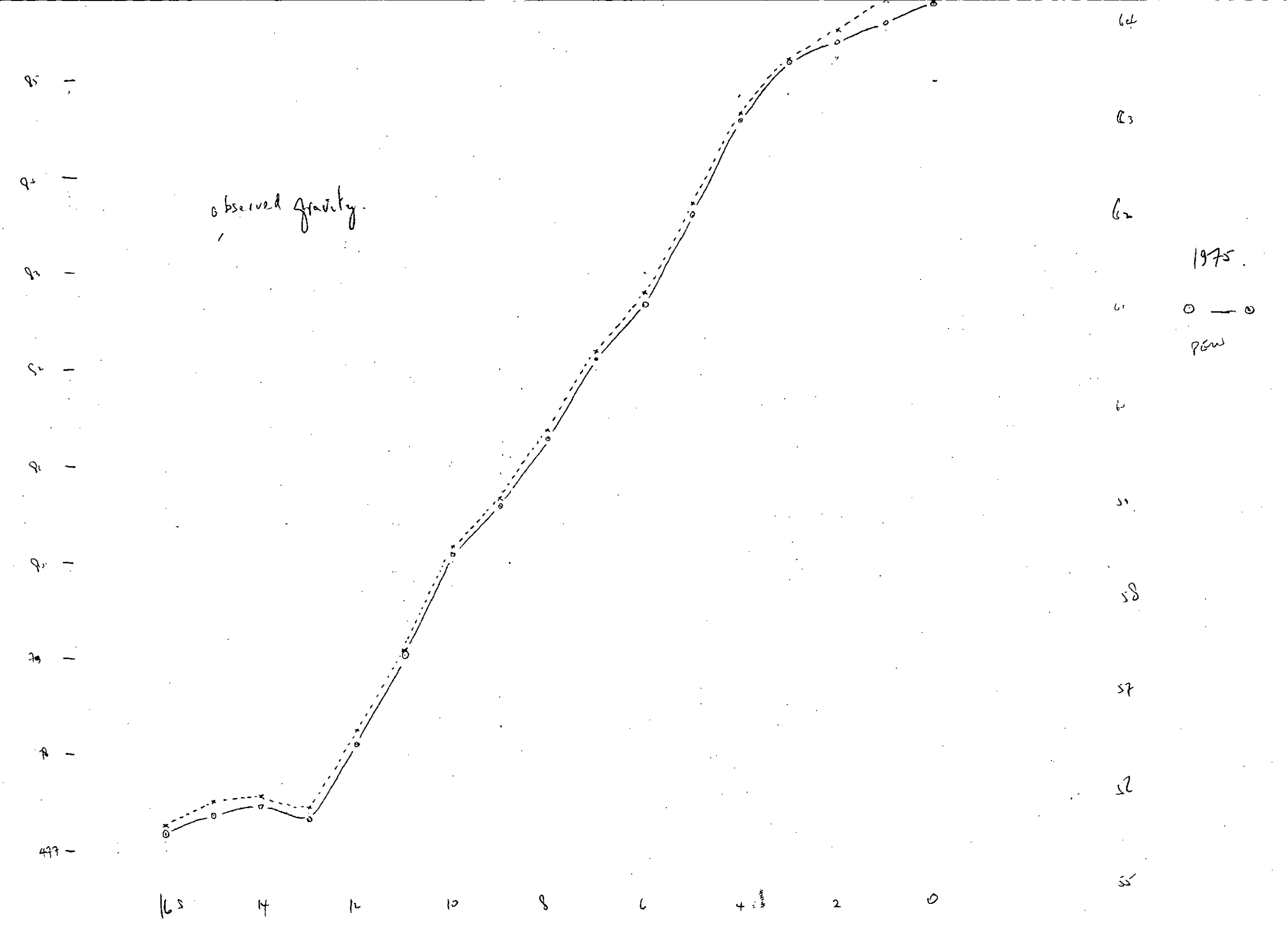
TY GRID

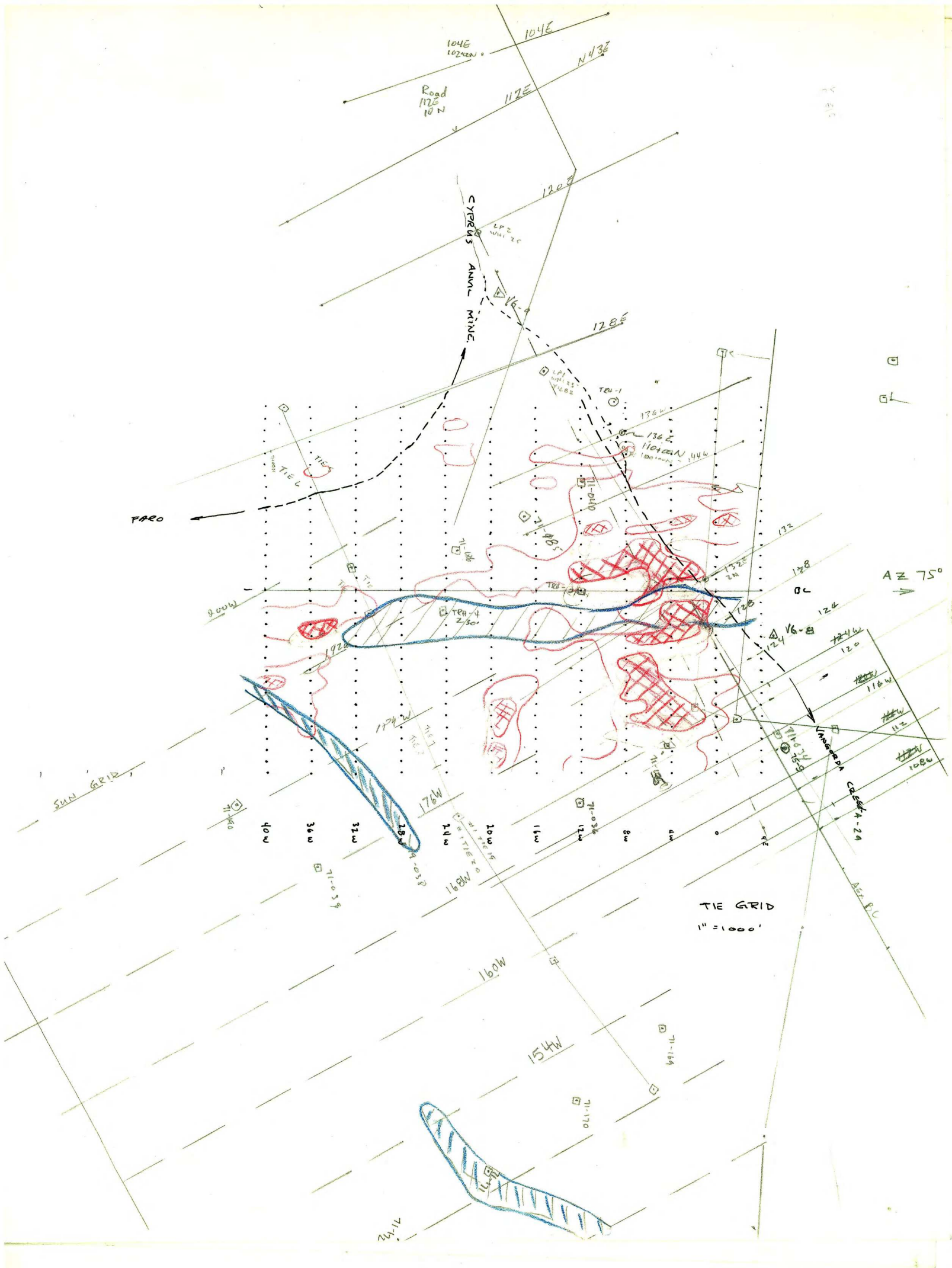
1" = 400'

GAL
TIE
GRIDS
L-40W

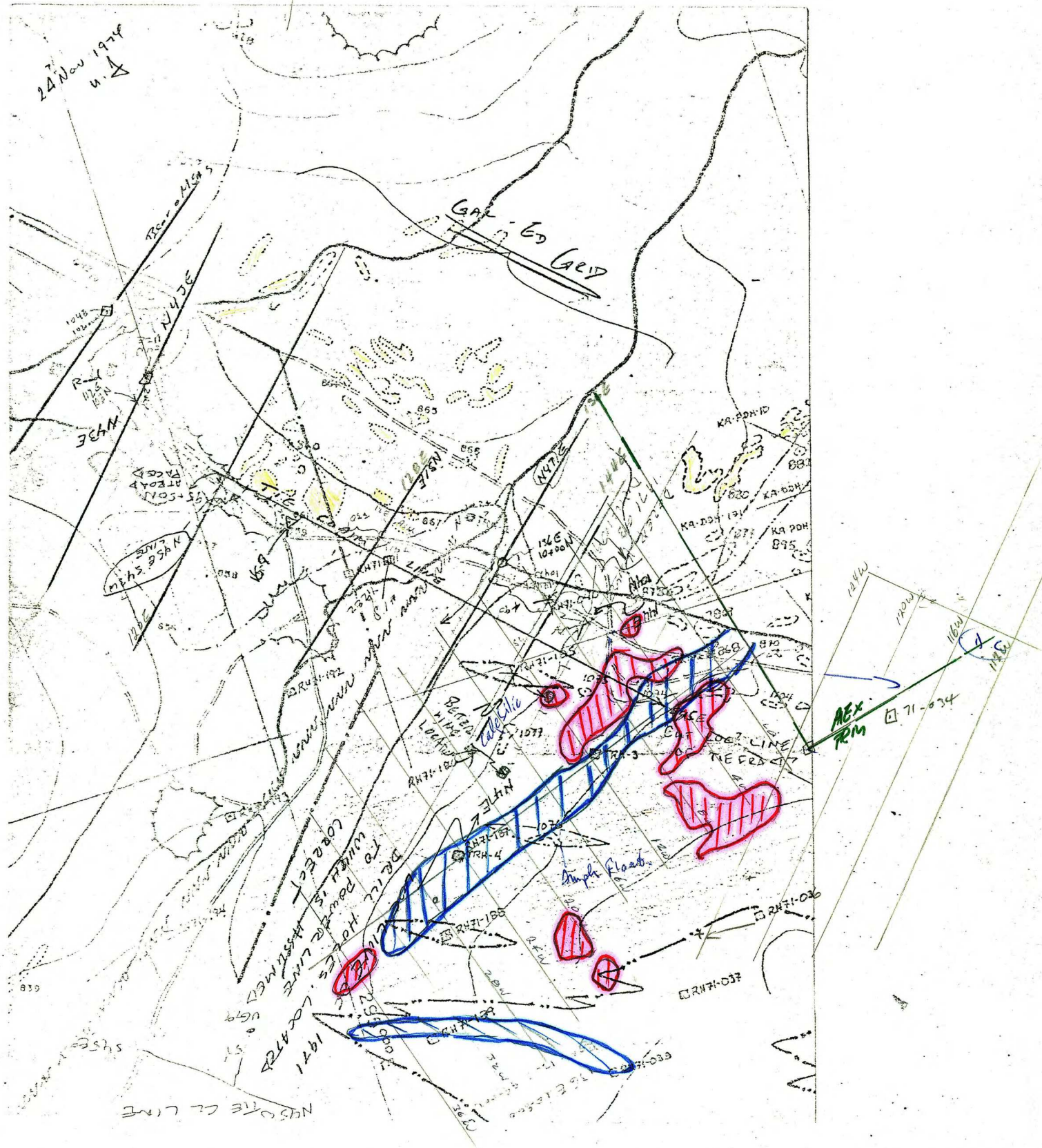
OVERLAND
1968
+ - - +

observed gravity.





24 Nov 1974
u. A

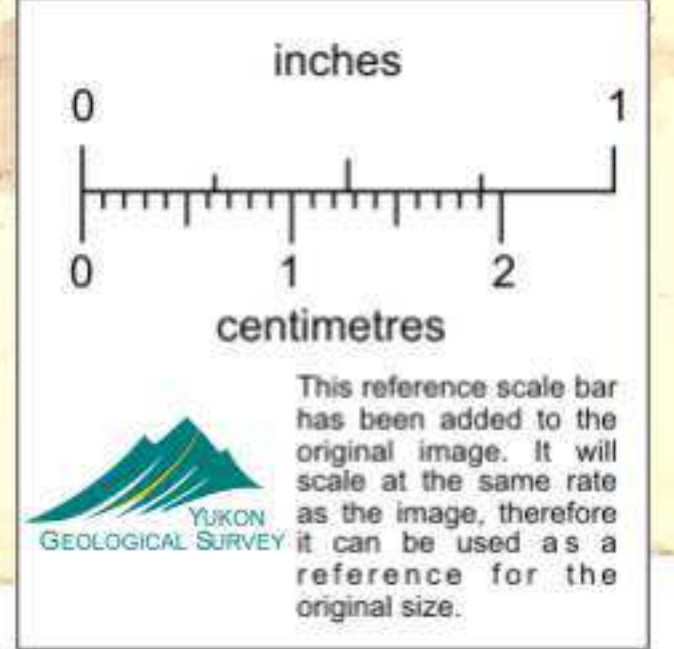


May transferred from original
1000' plot
Grids TIE, AEX " " "



TIE GRID
GRAVITY - 1975
1" = 400'
(re cut of 1966 original TIE grid)

— 1966 GROUND MAP
— 1966 JEM



ROSTERS & PINS