

017626

384 at 130 m from 383
385 30 m from 384
386 half way up 100m hill
387
388
389 50m from 387 at 50m over
390 60m from 388 at bottom of hill

392 100m from 390
394 200m east 393
399. new forest
410. up slope

Pe
part of

August 3 179
Mc Eoy
A10542



428 & 495

A12189-3.15

OK

D

+

① 349

⊗ 348

⊗ 347

⊗ 346

~~345~~
345

⊗ 344

⊗ 342

⊗ 343

⊗ 341

336

⊗ 337

338

⊗ 339

⊗ 335

⊗ 334



line head 25°

≈ 300m apart

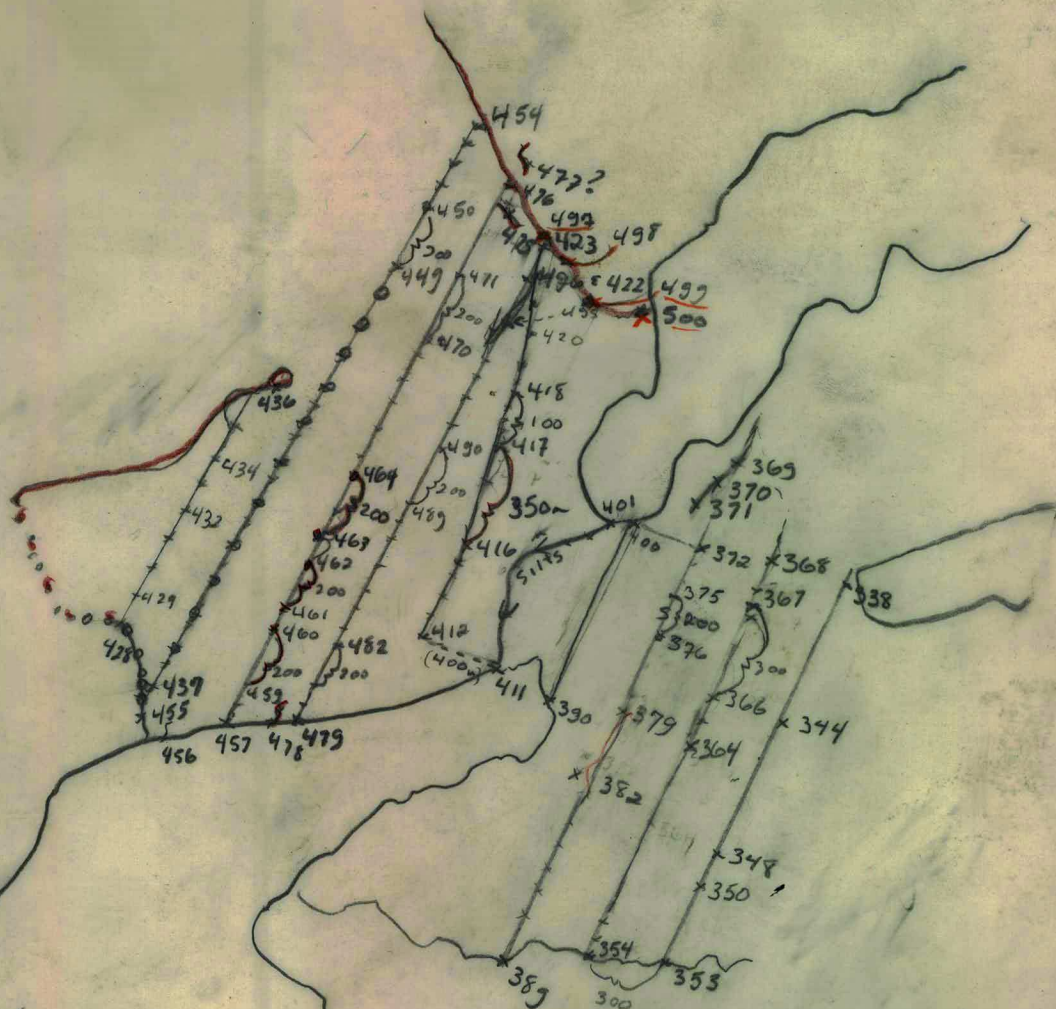
≈ 100m intervals

S is for Swamp

⊃ 200 gap in samples

○○○○ swampy stream
no sample

~ sym for stream of SP



MCEVOY
LAKE

AM9R - #'s

P. Robertson

MCEVOY LAKE Grid August 3 through 8 1979 A12343-18




NEVILLE CROSBY INC.

948 HOWE STREET, VANCOUVER, B.C. V6Z 1N9
TELEPHONE 669-7525 TELEX 04-507782

MINING & FORESTRY SUPPLIES

**Waterproof
Cruiser's Metric Field Book**

NCI 341

Smiley
Evo of McEvo
grid. 

Aug 6(?) Sunday

— address 5 - McEvoy
ridge:

#475 at 30 M (on top)

477 questionable

Summit - 560 M

NO sample 1100

-486 - 1130

FND - 1160 / Lake

6th - (150°)

#487 - 0 M

493 - 600 m - ridge top

497 - 1000 M

498 - 1100

ENDS 1200 M

7th

#499 - 130 M

500 - 215 M

501 - 300

No Sample - 1000 M

508 - 1100 M
512 - 1310 M

END of I - 1325 (Lake)

(#8) (150°)

511 - >

51 - 0 M
515 - 400 M
516 - 550 M
517 - 690 M
519 - 920 M
522 - 1260 M

END - 1250 M

(#9) - (330°)

523 - 1000 M

530 - 800 M

No Sample 900 M

531 - 970 M (swamp)

ENDS 1140 M

532 - 50 M down beach (solid ground)

(#10) (150°)

533 - >

533 - 100 M
200 / 300 / 400

swamp - no samples

534 - 500 M

540 - 1100 M

541 - 1230 M

542 - 1340 M

ENDS 13:00 M

Aug 2. - traverses above
1st me w/out crop - on hill
side

543 - 0 M

No sample 500 M (Rocky moor)

549 - ~~900~~ M (no top) (100°)

silt - 1st creek

550 - 900

551 - 1000

553 - 1217 Creek

559 - END at 1760 M

3rd 2nd up, 100 M

560 at 100 M

564 500 M

566 - 665 - Swamp

578 at 970 -

570 at 1010

577 at 1600 -

END

(crossed slight dip to
chipper pad, was on
granite)



NEVILLE CROSBY INC.

948 HOWE STREET, VANCOUVER, B.C. V6Z 1N9

TELEPHONE 689-7525

TELEX 04-507762

FORESTRY SUPPLIES

**Waterproof
Cruiser's Metric Field Book**

NCI 341

Geology OBSERVATIONS
July 2 79

1000 10.5 SW

200m - light grey (shale) - shist

400m outcrop - black shist
phylite (Fe stains)

600m - in sample Black
shists

From Baseline to 700m
grade upward

700 on downward slope

outcrops of (granodiorite)?
(possible gneisses because
foliation seen)? non-felds,
(orthoclase feldspars) phenocrysts

July 17/79

TRAFFIC MOUNTAIN

Sampling start 100
(can't remember last #)

AY9-R

100-119 every 1/4 mile

105-5/1

A12255-214-218

75 Sample

soil samples

July 18/79

Samples

120-146? 105 5/1

Woodside River

silt in
creek

1/4 mile

July 19/79

105 5/2

silt 1/4
intervals

12255-308

Samples 147 → 169

Between 158? 159 Flagging - MY6B 112-5

✓ July 20/79

silt. top of J2
A12189-166

Samples 170 → 182

July 23/79

183 → A12189 354-353
204

✓ July 24 A12189-161
105J/1^{1/2}

205 → 224

July 25 ✓

225 → 244
105J/1 A12189-165

July 26/79

Re-Brian's (bearscare)
Tidd

245 → 265

✓ July 27

12185- 105J/1

266 → 284

Plumman Creek.

✓ July 28 A12189-160

Brian's - repeat

285 → 298

Re-Paul's track.

July 29 ✓

298 → 319

July 30 ✓

320 → A12189 - 316.5

337

1056/9

* Wrong creek

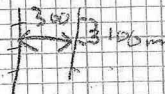
July 31/79

338 →

Grid near Mowoy Lake

100 m spacing

300 m lines



Rained out 2 days

Aug 1st 2nd

Location Notes.

tag #336 starting point

August 3/179

continue McEvoy Grid

re-cap July 31/79

338 → 371

August 3/179

372 → 400

* Important locations on overlay
otherwise 100 intervals, 300 m
apart lines.

August 4/179

cont

401 → silt along creek In/w
small & large McEvoy Lakes.

401 → 427

August 5/179

cont grid

428 → 454

sorry ran out of tape 436 or not
marked.

August 7/179

cont grid

455 → 477

(462 → 200m)

August 8/175

cont grid

Note - discovered that #
424-5-6 are misplaced
and 427 is none existent (it was a long
day)

will be redo entire line
plus sample stream at grid's end

August 9/79

OFF TO ROSS

*note take all geochron
maps etc to Fano

August 10/79

~~Mount~~ TRAFFIC Mountain

501 → 522

August 11/79

Mount Tidd Grid

fill in - 11.25 = 11.75

100m intervals
2 km long.

11.25 → granitic at 1.3
= 1.5 km - line only to
1.7 because of P.F. and
the large well which it
lies.

chained over 500m at
≈ 250m over was stream.
S. It marked as 11.5 km
1.7 km South

August 14/79

re-sampling claim group
north of Fano Deposit

line 208W - beginning at the
road just above Rose Creek;
sample every 200ft (60m)
will note only those ^{spot} samples
which I was unable to take a
sample of. ~~None~~, all ^{taken} samples

- Samples marked as

ARG-R 1 through →

R - big for RANGE

#ARG-R
→

208W
 42 1 (R.A.G.-R)
 300 2
 405 3
 385 4
 365 5
 355 5
 345
 ↓
 and so on

August 19 1979

Ford's TSS Clamps

line	samples inclusive
208	→ 1 - 60
216	→ 61 - 118
240	→ 119 - 168
264	→ 169 - 216
272	→ 217 - 269

note that lower portions of grid after B horizon was unattainable or not present.



NEVILLE CROSBY INC.

948 HOWE STREET, VANCOUVER, B.C. V6Z 1N9
TELEPHONE 669-7525 TELEX 04-507762

MINING & FORESTRY SUPPLIES

**Waterproof
Cruiser's Metric Field Book**

NCI 341

Smiley / 79
AP60 McEay

Aug. 10 (Friday)

578 → 615

AD 2189-355

Traffic Mtn.

105 J

- 610 prob. old channel of 611.

Aug 11 - Mt Tidd

10.25 S, 10.75 S
(15°, 195°)

→ 2000 M.

1700 - Main Creek
- sample from cut bank
- appears to be till after creek.

10.75 W

- Prob. till; 2000 → 1500

- 1600 S in bottomless

Swamp (H₂O)

1500 - " (mud)

1400 - Granite o/c

1200 - " b. ground (soil)

on outcrop

1100 - Permafrost

Granite ends - 850
Summit - 750

Aug 12 - no photo
small creek on
N. of Belly river.
Leading down to rapids.
(Top, 105, 5/1.)

616 meadow (on top)

617

618 Rock sample - anom.

619

620 - dillys
- see photo

621 12628 st 3924

623

↓ creek flattening out

616 → 627

For reconstruction see

A - 12255 - 210

105.5/1

April 14 Aug
Grum - TSS claims
- Geophysics
34S → 70N

224 W - 383 at
trib. creek.

10S - questionable
(ash below it)

6S - 2S - scattered
massive o/c's - like sample.

1.3 N - see sample.

2N - rock as at 1.3 S

~~no soil~~

12N - talus - no soil

14.4N - o/c.

- w/ schists, etc.

~~sample~~

17.3 - creek - silt

18.0 - Swamp - ~~no~~

19.5 - questionable
20 - silt. sand from creek

22, 24 N - not
too good. (creek)

26 A-1

26, 28, 30 N
- subsoil looks like from
shale sim. to 13 N
(Plates etc. in it)

Aug 15

232 W. 34 at road
31 S → 46 N
32 - No sample
(rocks & ash.)
25.5 S - upper rd
No sample at 4.0 N
(swamp)

4.5 N - creek.
Crane down line -
same one as

6.0, 8.0
10.0 - looks alluvial
(same creek.)

12 - ditto

14 - silt - same alluvial valley,
possibly a diff. creek.

line ends at 22 N

sampled to 46 N

Aug. 16 - 248 W. TSS

345
→ 60 N. U185 - 145 - No ash horizon

83 - Org.
→ OS

→ questionable - couldn't
find a proper mineral layer
7 N - Road.

I would. if give
a pinch for any
of these samples
- no ash horizon,
no mineral
all little bits of
this & that.

16N - no sample

1st decent samples at
22N

60N - end

Aug 17 256W

36S → 60N

34S - swamp - no sample.

26S - " "

Slope begins at 25S

~~gully~~ 18-14 - no fixed
Ash horizon

10S - gully.

Aug 18

280W

36S → 60N

26S, 24S - swamp - NS

Main creek at

26N (at road)

32N - granite talus
- N.S.

Aug 19 - 288W

36S - No ash hor.

34S

32S

appears to be river sand.

16S - gully - no ash
horizon.

8S

↓ 4S (silt on 1st and 2nd fork.
(line to under creek.)) } stream
2N } - type
soils.

14N - upper road.

26N - road.

30, 32N - v. deep soil ~~plg~~
- samples questionable