



NEVILLE CROSBY INC.

248 HOWE STREET, VANCOUVER, B.C. V6Z 1N9
TELEPHONE 669-7525 TELEX 04-507762

MINING & FORESTRY SUPPLIES

**Waterproof
Cruiser's Metric Field Book**

NCI 341

Smiley
Gewechen Notes
→ mid
McEvoy

Sample types - suffix Letter

Silt =

Seepage =

Soil =

Rock =

S
I
L
T
S
S
E
E
P
A
G
E
S
O
I
L
R
O
C
K

If sample rusty - add "g" to end

Try to avoid organic - if
can't get better, add "o"

Try to take below rusty outcrop
if available - (write in book)

Mark clamp posts in book,
on photo overlay (if available)

(w/ relevant in la. from post)

June 11 - S.W. corner 105 J/3
M4 Tidd area
A 12371-168 AY98-1 → 34
A 12186-52

- #2 - clamp posts across swamp
- #3 - down hill from fly-camp
- 7 - rusty outcrop out to stream
- 30-33 - Shale beds, calc to - exposed
- 34 - sandy but highly stressed

twisted - much white powder
in rocky - 6 x 8 in; chert
exposed

in area

June 13 Bottom 105 J/3
M4 Tidd area
A 12186-179 AY98-35 → 72

35 - extensive sampling (ribbons)
in immediate area

- 40, 47 - Red-brown mineral soils
- 60 - on mainly near top of cutbanks

June 14 Bottom 105 J/3
M4 Tidd area
A 12245-20
A 12203-303

OK

June 26 - Grid
5 km W + 1000 S + - permafrost
on plateau - almost impossible
to get sample

0 km W - 900 S + - lost time
had to go back for more - not
completed - samples missed
0, 600 S

June 27-30

- some perm. on south side
a few questionable ~~stratigraphic~~
- 30 - 3 courses - to 4.5 km W (S)

spots 5-5 km W N. impassible,
large alluvial area
w/ alder

look at 4 km W 10
July 2 (?)

5-5 km W - bloody hell
5-5 km W - timberline at
1350 - some quartz

65-1500 S. at rusty outcrop

July 3rd - Ind thought it was me - to prevent washed
50 m towards a mountain
I sighted on (w 3 km away)
- compass & setting (for sight)
changed about 12.15

Reas - stony local
mag. variations - 70.0 W,
400 S - others prob.

35 metres later, was back to
original setting, 3 courses
(7.0, 7.5, 8.0 S.)

July 4 - 7.5, 8.0 N

July 5 - moving day
chopper late

July 6 - Camp at 8.7
Died 3 courses - 9, 9.5,
& 10.0 S

July 7 - Out crop at
creek cut - 10.0 N, 10.0
W on Grid

3 courses 220 incline N West
18 incline N South

July 8 - walked to 14.75,
cut out chopper pad at creek
- no sampling done today.

July 9

Moved camp to 14.75, then
staked from 6.8 → " 11.0
6:00 P.M., setting camp
Next day - no water after 8.9 km

July 10 - Finished staking
baseline - then did 15.5 S
Out crop on edge of creek
at 4.40 S, 15.5 W

Vertical cleavages, approx
100 m. of ~~staked~~ rock
ridge on downhill side
of creek
S SW → N ends at

100 m last bench
above B. Timber creek
14.5 W, S - got good

July 11 - 12.0 N, 12.5 S
0 - bank at 5:00 p.m.

July 12
- 12.5 N
130 S

- at 600 M on 13.0, alluvial wash - much ~~port~~ gasper, some unusual milky bluish agate.

July 13

large granite outcrop at 1350 W, 300 S. - upper to be same as at baseline

14.0

- continues (identical) down to 14.0 E, 200 S.

July 14

16.5 N - E40S at 300 M.

July 17 103 → 127

A 12255 - 397

- 105 J/L - Tropic Mtn.

#105 - reddish brown (although w/ the bright red of iron oxide)
109 - Creek to top all shale trees etc - no silt.

typical sample metal on bag

July 18 128 → 146

A 12255 - 311 Tropic Mtn.

105 J/L - from lake etc, Pelly.

All samples silt, direct from stream unless noted.

#130 - taken near main at on trib. - unable to find any silt higher up (original mass only) - may not accurately reflect trib etc.

#146 - soil - above canyon - on hills overlooking.

July 19 147 → 170

A 12255 - 214, 308

105 J/L Tropic Mtn.

147 - soil - no silt visible

149 - " " "

165 - spring - metallic yellow

flakes in sample - may be chert or yellow mica

#166 - same, but more flakes.

July 20 N. W. Corner, 105 J/I
11-12189-167

171 → 191

July 23 A12255/402
Traffic Mt. 105 J/I

191 → 210

192 - mud from old cut
channel at junction

193 - 1st tail on left hand
side - approx 100 yd from

198 - soil - no silt avail
199 " " " "

July 24 A12255/212, 3 & 5

211 → 230 Traffic Mt.

216 - spring near game trail

220-225 - location of overlay
conjecture

July 25 105 J/I
11-12189-352/335 Traffic Mt.
231 - 249

236 - seep - no silt avail

246 - just upstream
from A19R 144

July 26 A12182-337/339

250 → 278 105 J/I
Traffic

270 - taken from edge of
bank

July 27 12185-370

279 → 296 Traffic 105 J/I

July 28

297 → 314 " " "

~~297~~ A12189-162
297 - from stream bank

July 29 A-12255-210
315 → 105 J/L. Traffic

322 - rust-red stream
327 - soil
333A - outcrop - on Pelly
River

July 30 105 G9 McEwen Lk
334 → 349 A-12189-315

July 31 McEwen Lake Grid
350

350 at starting pt
354 - (400 m) - at granite
outcrop.
1440 - granite lens - slate
(Rising bay) begins
580 - soil
357 (700) - at purple bent white
crop (on top)
361 - 1322 M - 1st trav.
Highest T. anomaly -
outcrop
365 - 1400 M - just over
crest of hill
1465 M - P.C. - green/black
banded shale

365 - 1697 M - stream

370 - 1920 M - stream

371 - 2010 M - "

374 - 2330 M - Stream -
end of traverse

377 - at 220 M.

379 - 400 m - Stream

- 547 m - black shale w/
quartz - a mag's. - overlooking
(South side) Lake

620 m - lake - at the
margin (just shinned
upstream edge)

1038 M - outcrop
(Green + white str w/grey)
No. Sample - 1300 m

388 - 1400 M

No. Sample 1500 m

389 - 1600

390 - 1830

391 - 2100

Aug 3 203° - 420 m → 275° - 240°
(700 M)

New line - 392 - 1800 M

393 - 1920 M

394 - 2000 M

395 - 2100 M

396 - 2200 M - Silt

lake at 2300 M

(397)

NO ash horizon

3rd traverse

398 0 M

399 etc. 100 M

401 300 M

400 M - No sample - open

Swamp - not on map

See photo

550 + gym outcrop

660 - sample

406-890 - soil by empty outcrop

1430 - below lake, but
off course → 50 m towards
creek just →

412 at 1500 M

413 - 100 M down ckr, N side

414 - 1670 (main ckr -

smaller one) at 1630

415 - 1700

416 - 1800

417 - Stop - 1935

END - 2070 M - 419

(Cliff across ckr - app 115 M

high)

420 - lost (100 m)

creek - 165 M - no sample

421 - 200 M

600 M - no sample

425 - 700 M

1000 M - Swamp

429 - 1200 M

432 - 1500 M

END of traverse at

1584 - ~70 m to left

Aug 4 - Ridge - McEvoy

330° - 433 - 474

#433 - 125 M

440 - 800 M

END - 857 M (441)

#2 @ 150°

442 - 0 M

446 - 100

452 Summit H - 675
END - 1130 M - #453

NO Samples

at 200, 300 M - swamp

456 - 353 M

394 M - 10' wte quartz

457 - 400 M - cut crop

459 - 600 M - Summit

463 - 700 M

Take at 1070 - no sample
(Swamp)

~~1st~~

464 @ 0 M

#467 - 300 } earth slide
468 - 400 }

Top - 11635

At base - 1000 M

474 - 1100

Name - 1200

Take - 1250

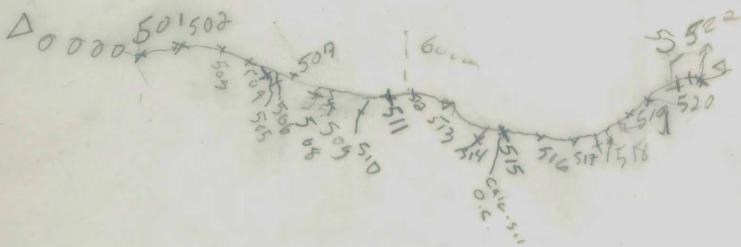


105-512

AYG-R

August 12 1979 A12187-161

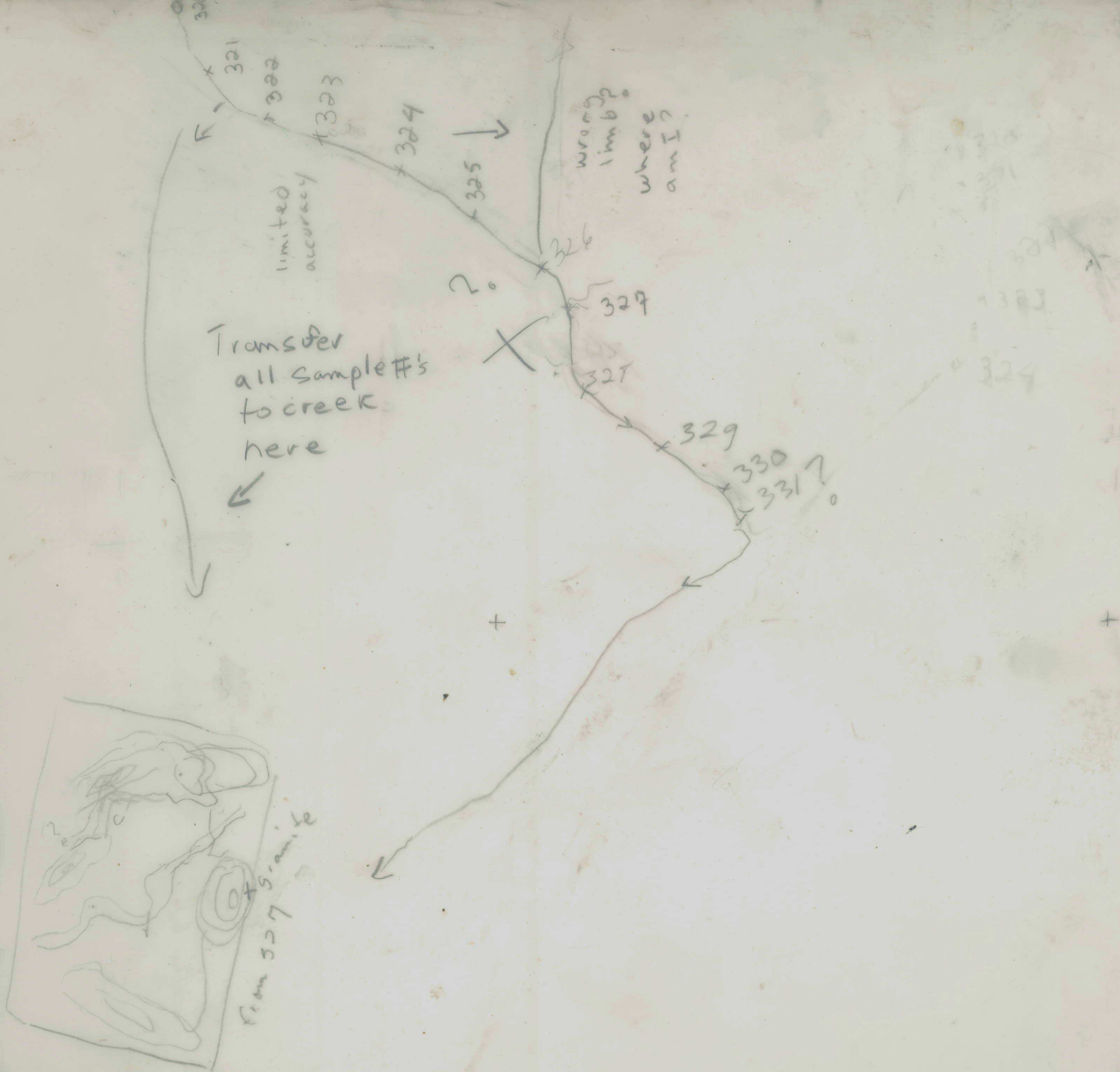
0000 None defined
tributary



Robertson 105511

A12189-352

August 10, 1979



July 30, 1979

P. Robertson

105 G 19

A12189-316

171
+172
x173

x174

x175

961 x
x176

x178

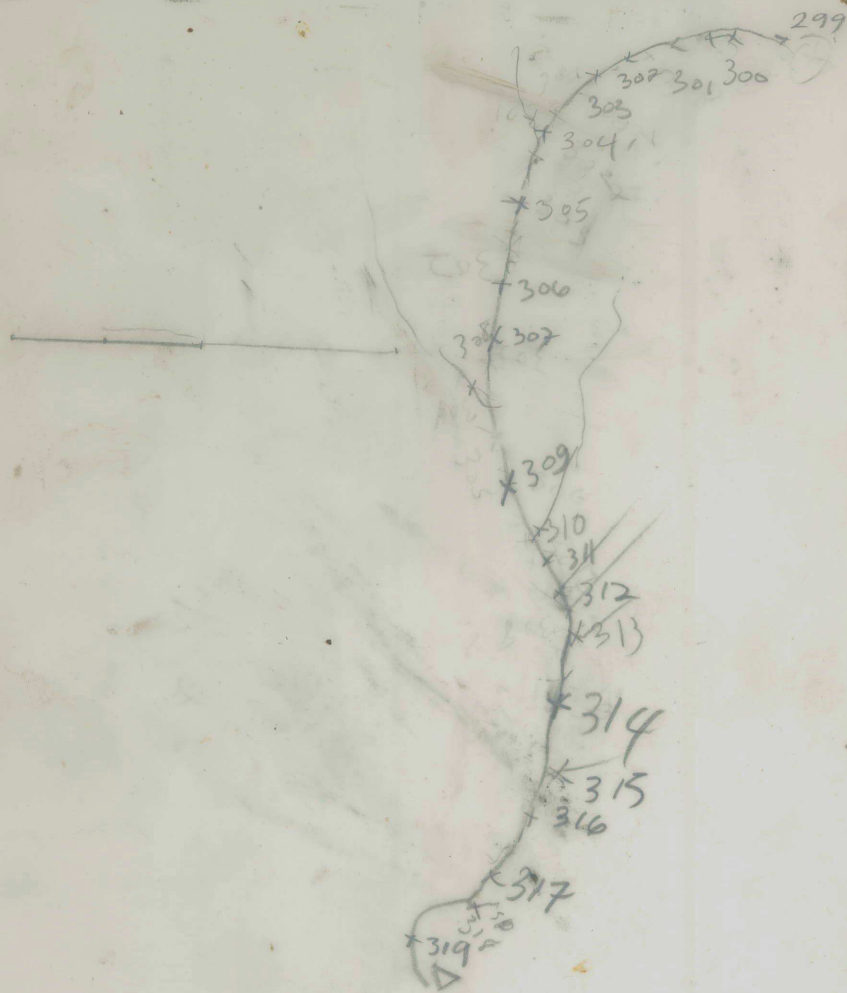
671 x
x180

x179

5

July 20/79 P. Robertson 105 2/1

A1279-166



July 29/79

105511

P. Robertson

A12189-163

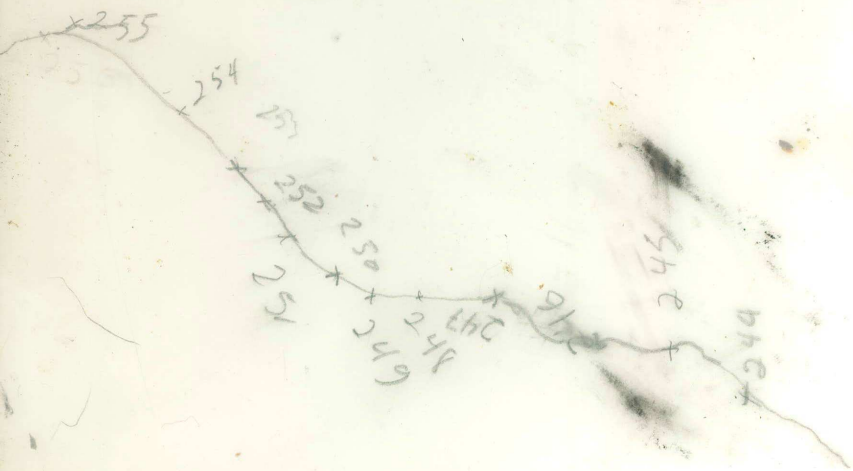




Robertson

July 25/79

A12189-165



P. Robertson

July 26/79

105512 A12255-309



July 26/79 @ Robertson

A12252311

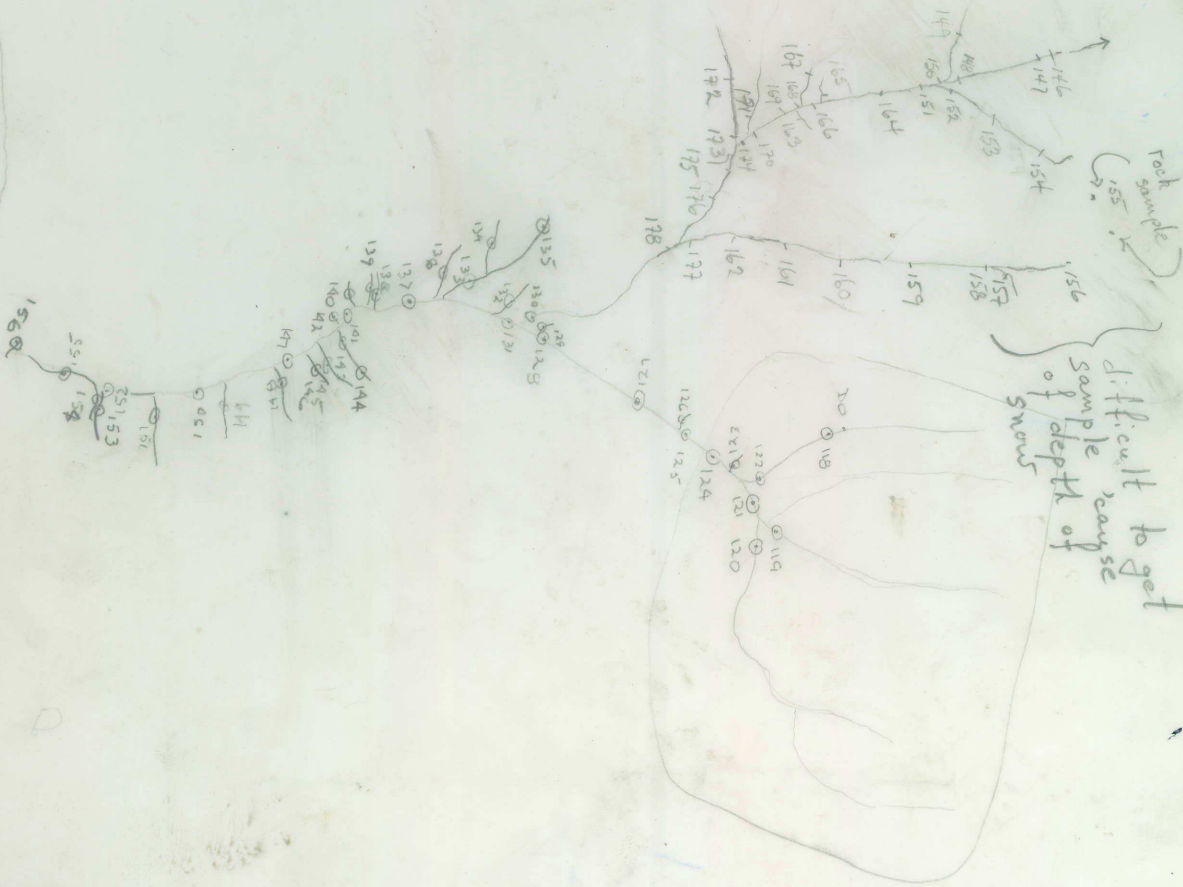
1055/11

186
X 187
X 188
X 189
X 190
X 191
X 192
X 193
X 194
X 195
X 196
X 197
X 198
X 199
X 200
X 201
X 202
X 203

July 23/79 P Robatza

A12189-354

14/6/74
S.M.
17/6/74
N.M.

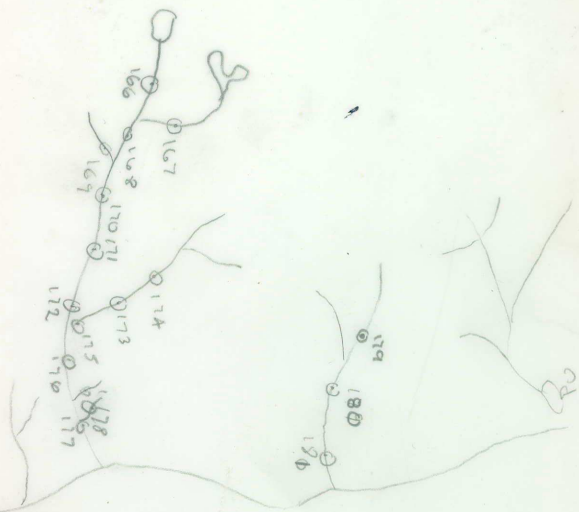


G.D.
15/6/74

A12255-310

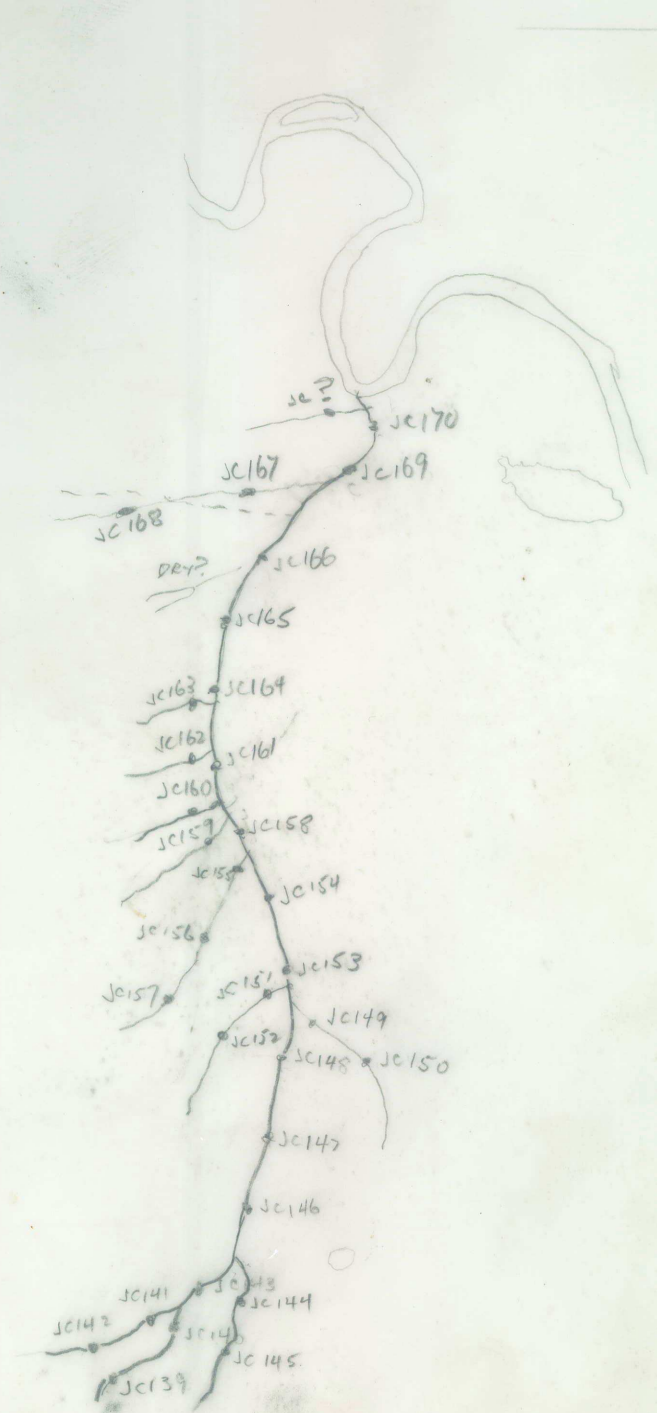
A12255-398

S.M.

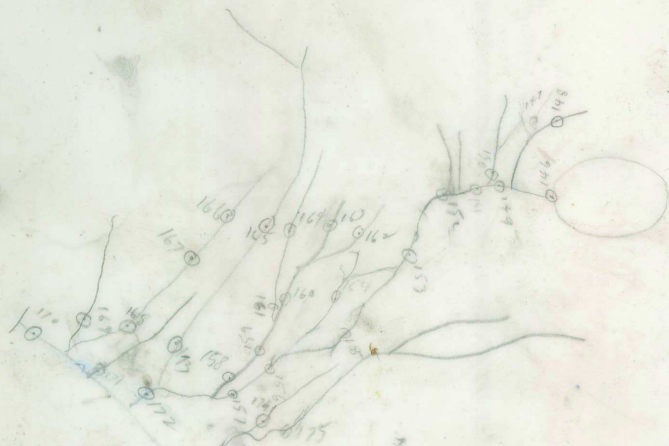
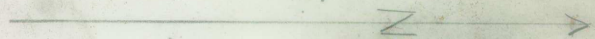


A12189-165

14/6/74
J.C.

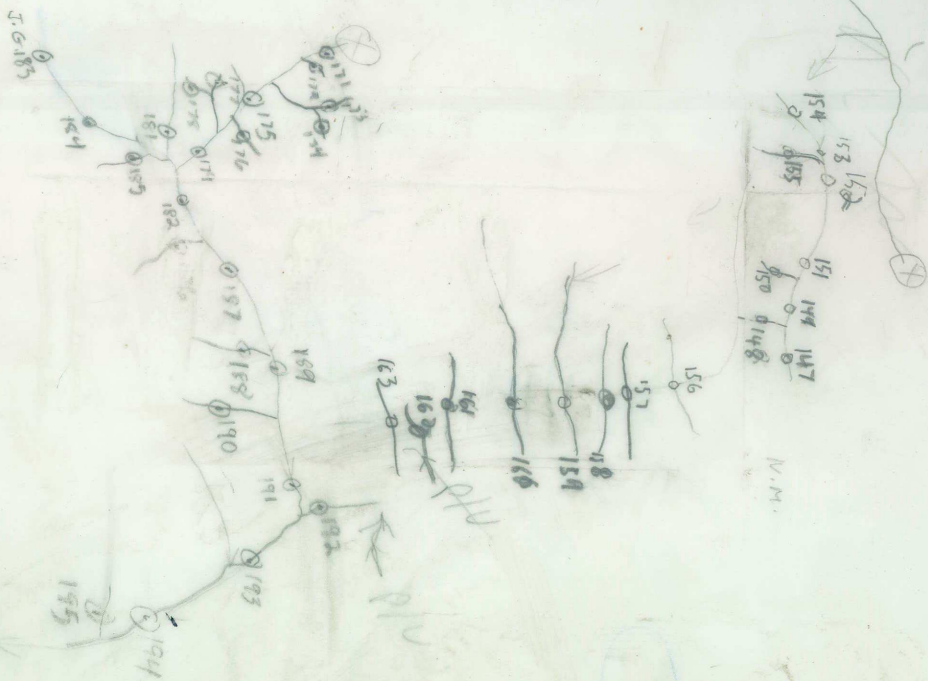


15/6/74
D.D.



A12255-215

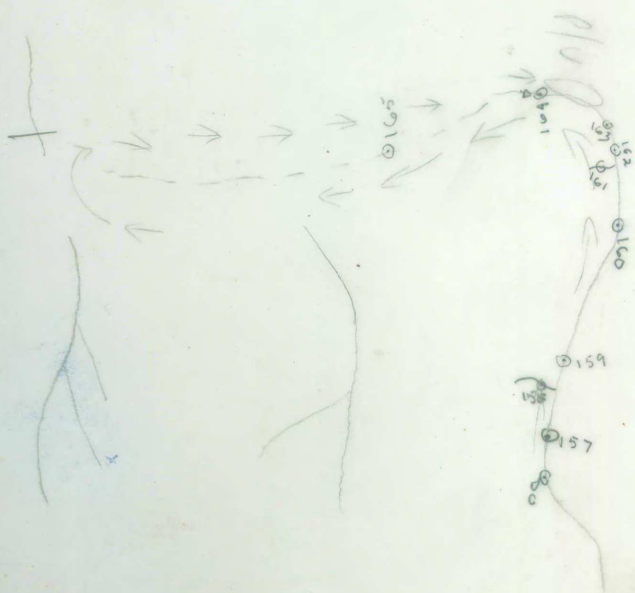
17/6/74
N.M.



DMU

A12255 - 2A

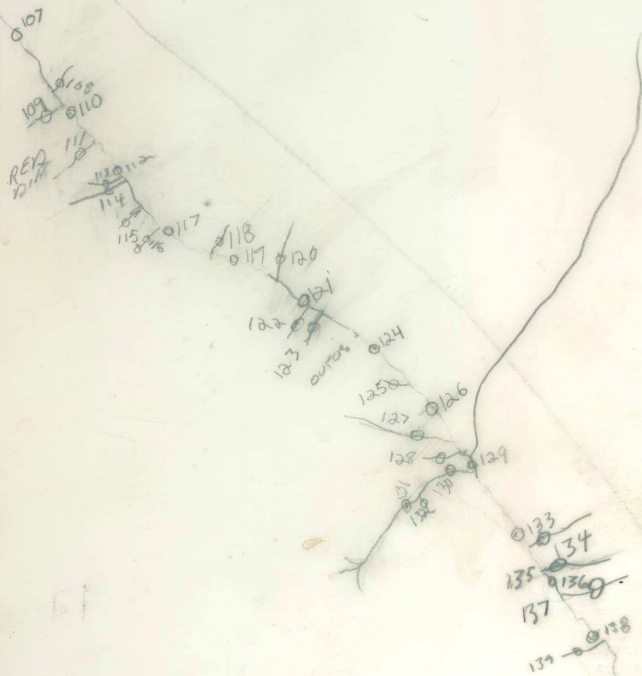
15/6/74
J.C.



MS
44/9/51

A12255-213

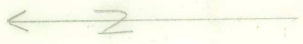
N.M
14/6/74



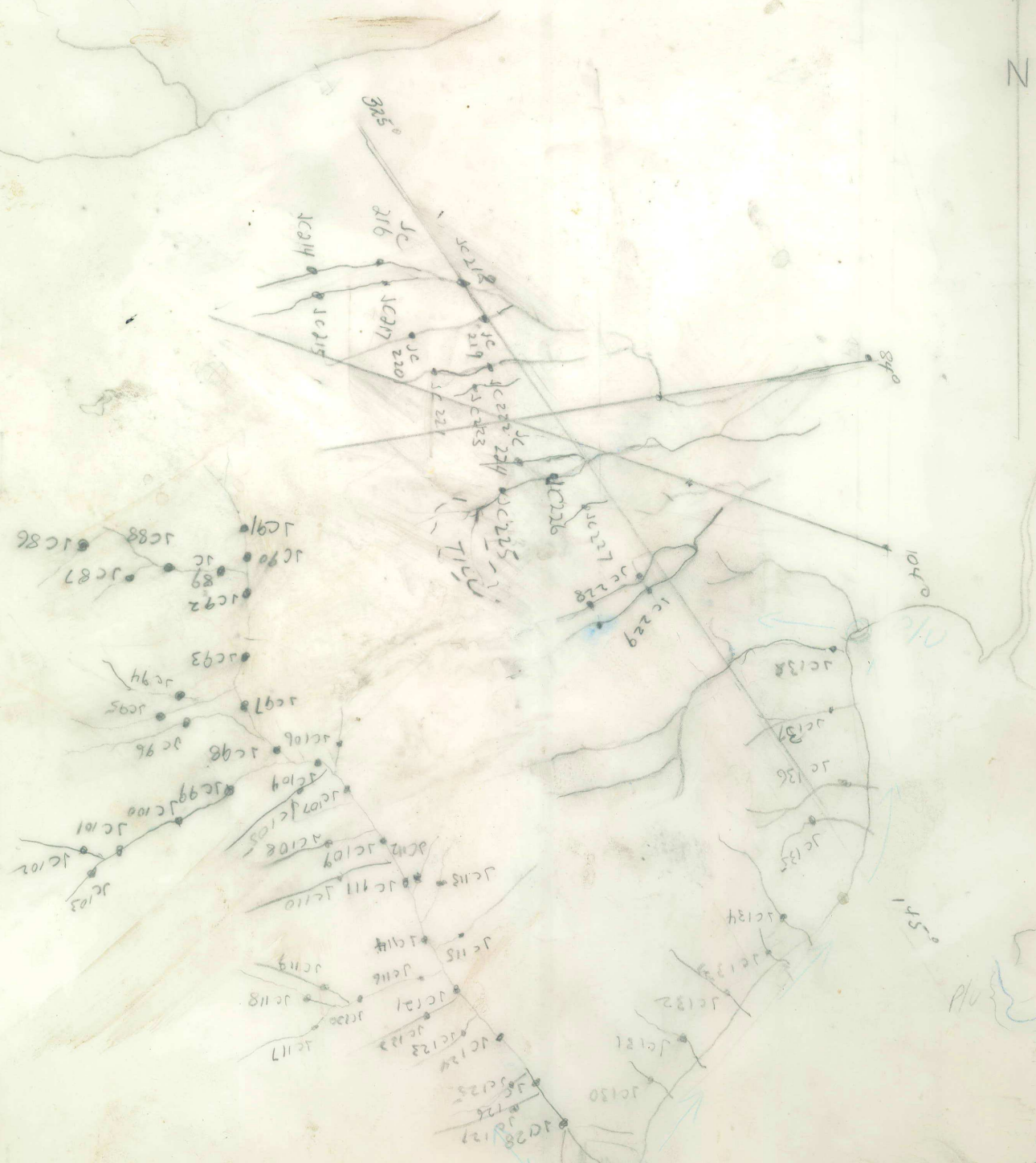
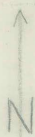
A12189-167

A.12255 399

D.D 13/6/74



JC
12/6/74
20/6/74



M.S.
4/19/74

V.D.
12/6/74

17/6/74
G.D.



A12189-334

o ⇒ station, not •

N.M.
13/6/74

J.C.
15/6/74

17/7/74
J.C.

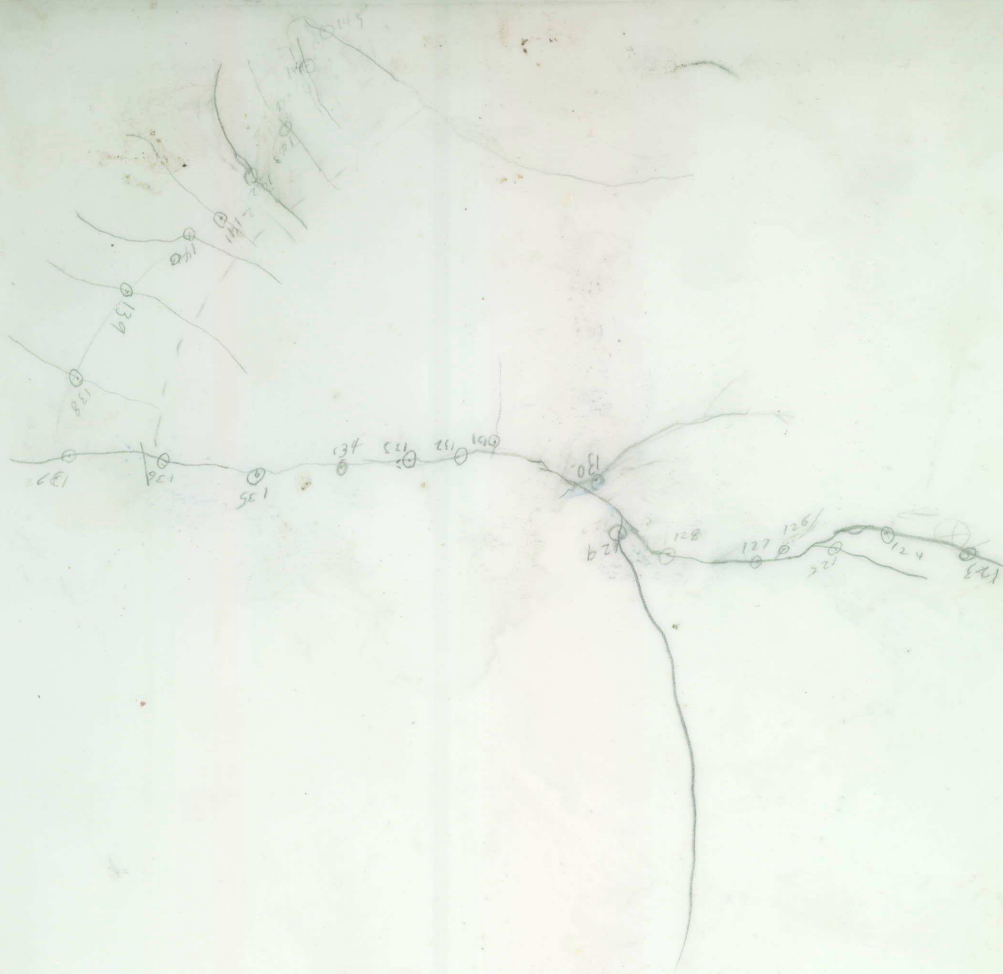


A12189-333

OPIU J.C.

14/6/74

D.D.

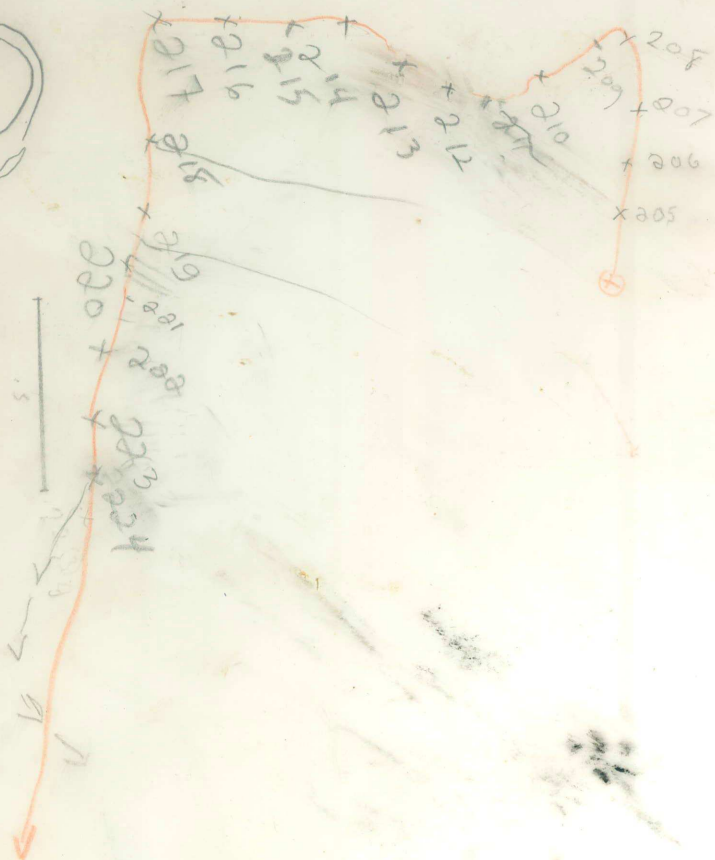


Aug 24/29 P Roberts

105-5/4

A12189-161

A12189-161



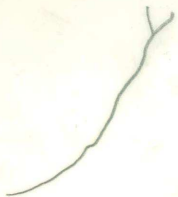
It's too early to be here!

P Robertson

July 19/19

105 J 12

A12255 - 308



⊕ 148
149

150 + 151/152

153 154 155

x156

x157

x158

x159

x160

⊙ 161

x162

x163

x164

x165

x166

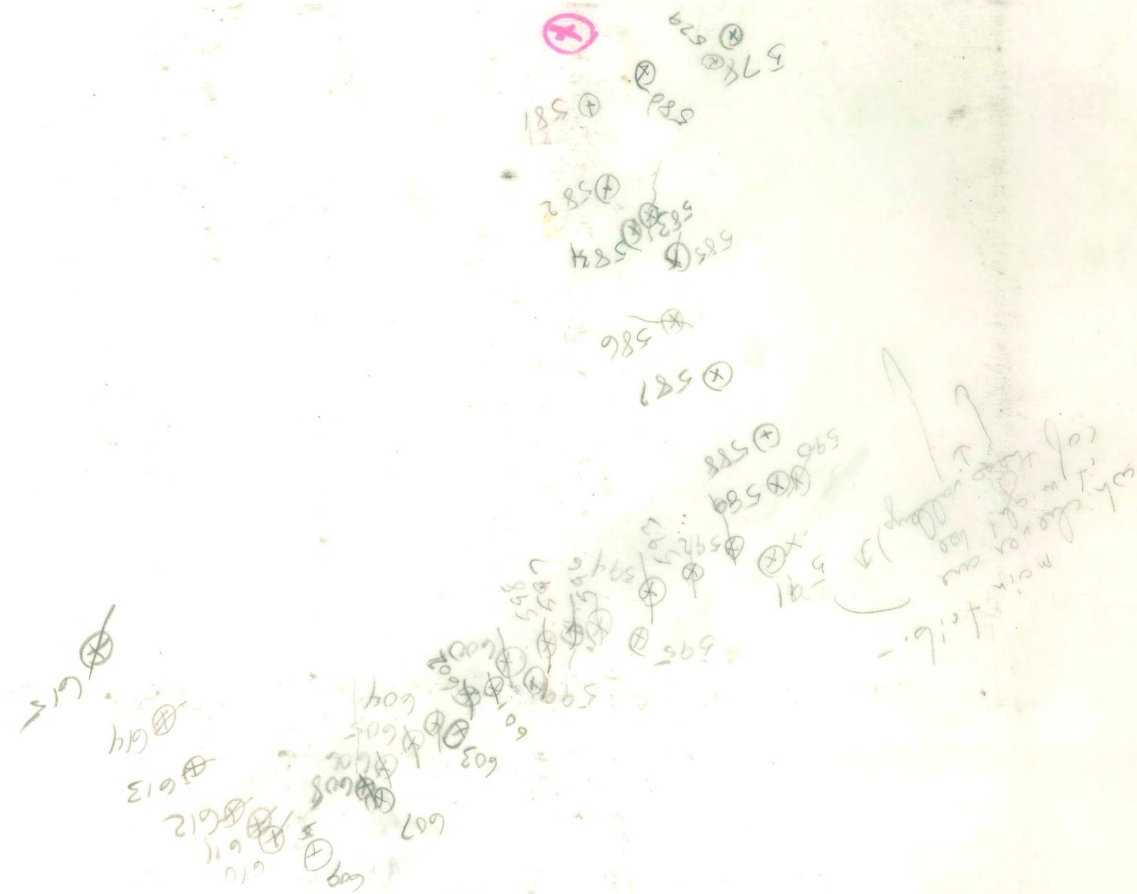
x167

x168

x169

.5

Tributary



105-J Aug 10 R Smiles A12 159-355



616

617

618

619

620

622

623

624

625

626

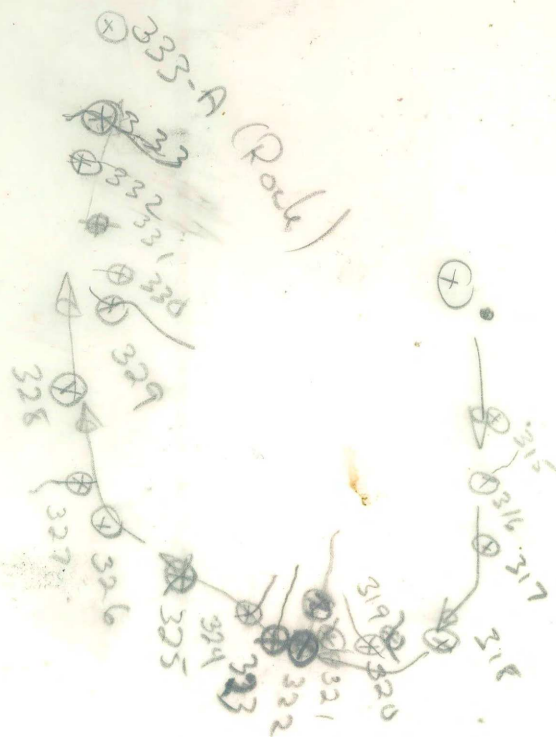
627

628

Trappe 105-311 Smiles

Aug. 12

A12255-210



(N.W. Corner) 105 F/1 July 29 R Smiley A12255-210

307
306 ⊗ 305
⊗ 308
~~309~~
⊗ 304
303
⊗ 302 ⊗ 301
300 ⊗ 299 ⊗
298 ⊗ 297 ⊗

310
⊗

311
⊗

312
⊗

313
⊗

314
⊗

105 J/1 Traffic. R Smiley July 28 A 12189-162

270 ⊕
271 ⊕
272 ⊕
273 ⊕
274 ⊕
275 ⊕
276 ⊕
277 ⊕
278 ⊕
+

1055/1 Traffic Mtg July 26 RSMILEY

A12189-331



R. Smiley Toaltic. Mt.

July 26

105 5/1

NV 2189-333

40

+

246 ⊕

247 ⊕

248 ⊕

249 ⊕

1055/1 Traffic. W. W. July 25. R. S. Miles

A12589-352

395
244
243
242

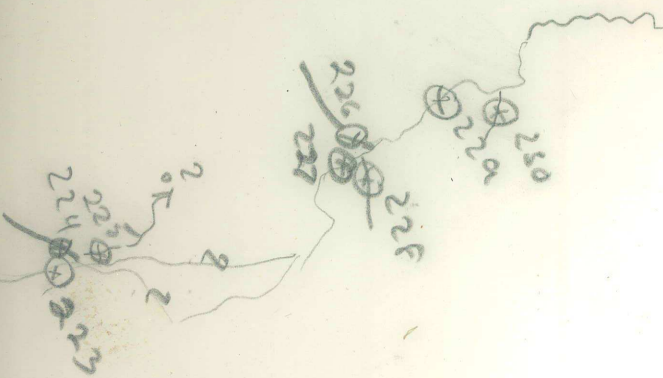
112
239
238
237

236
235
234
233

July 25

Smile

Traffic No 105 J/ A12189-335



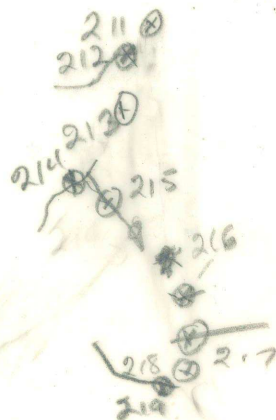
July 24. Traffic mtg. F. Smith/05 J/1 A12255-395

Traffic Mtn
A17255-212

July 24

105 5/11

R Smiley



Lake

216
???

⊕ 209

⊕ 208

⊕ 207

⊕ 206

⊕ 205

⊕ 204

⊕ 203

~~202~~ ⊕ 202

201 ⊕

199 ⊕

198 ⊕

197 ⊕

196 ⊕

195 ⊕

194 ⊕

193

Traffic

Mt. ...

R. SURGEY

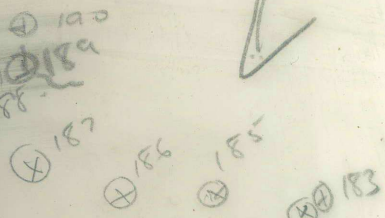
105 3/2

A12255-402

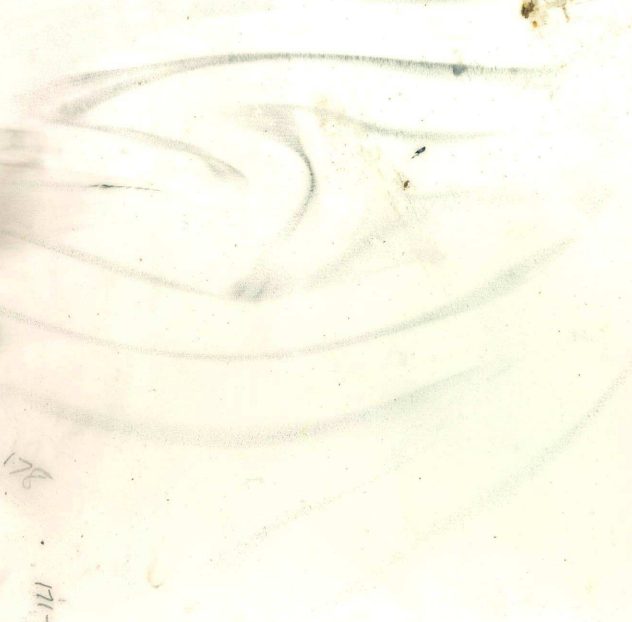
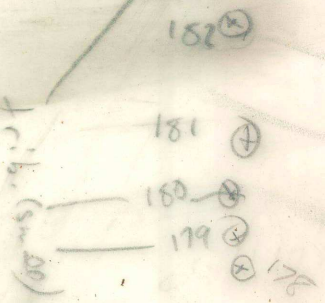
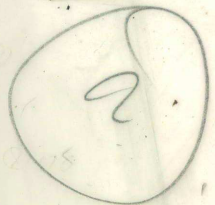
AD189-167

N.W. corner 10-5-56 R.S. 2-5-6m

That's the creek
though location
(exact) unknown



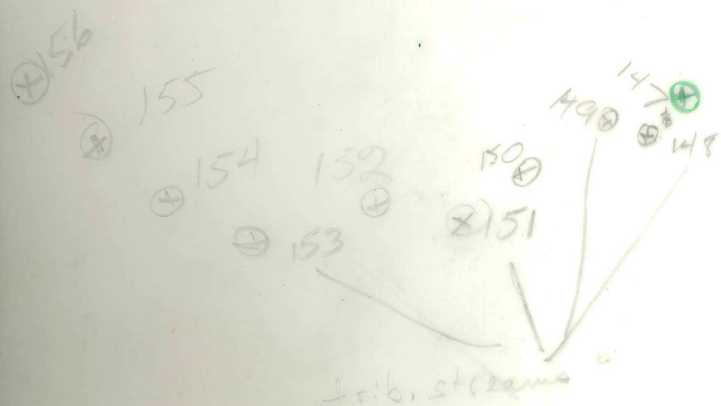
Small
trib





N.W. - Traffic W. R. Smiley 105 J/1

A12255-308

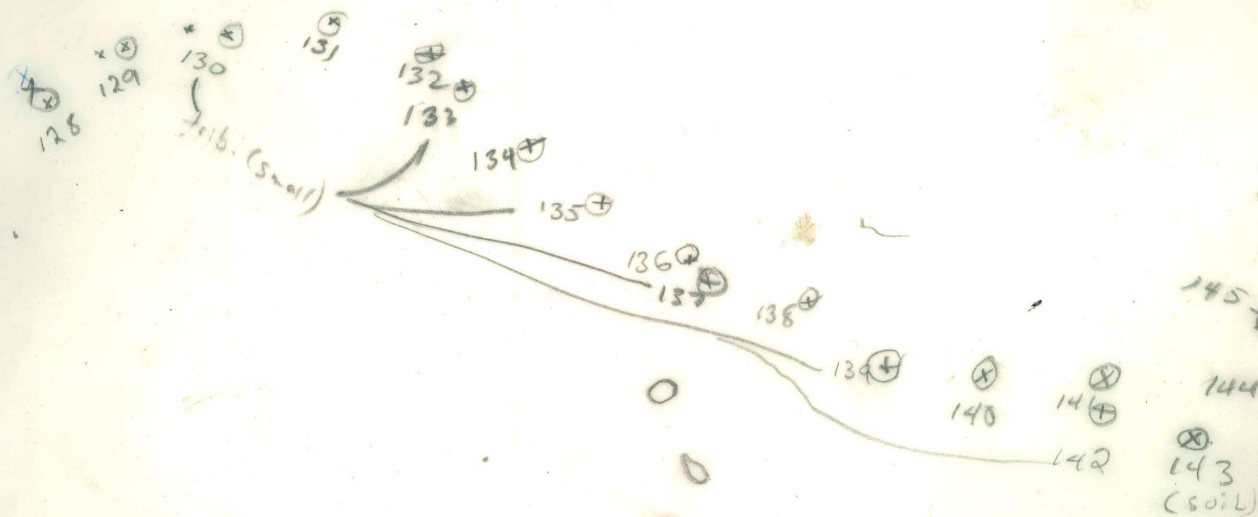


105-J/1

Traffic Mtn.

A12255-214

R. Smiley



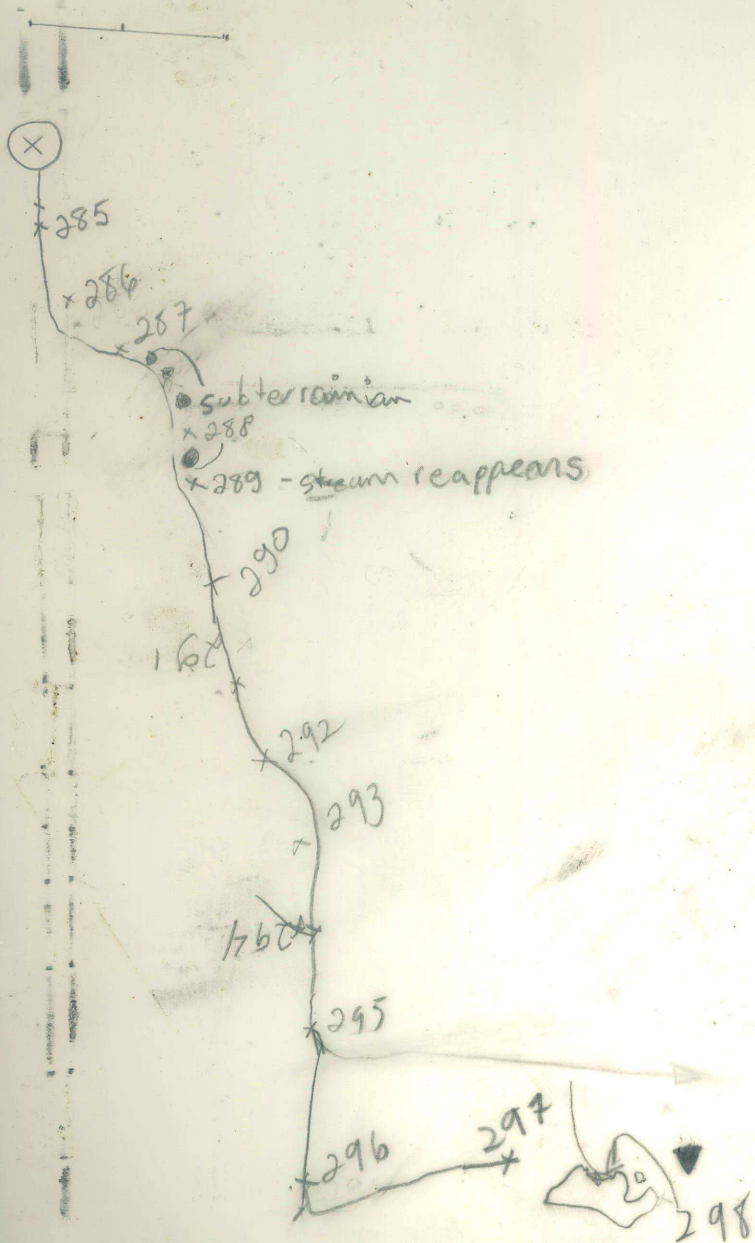
R. Smiley

T. P. M.

105 J/1

A1255-3#

July 18



July 28/79

P. Robertson

105J/1

A12189-160