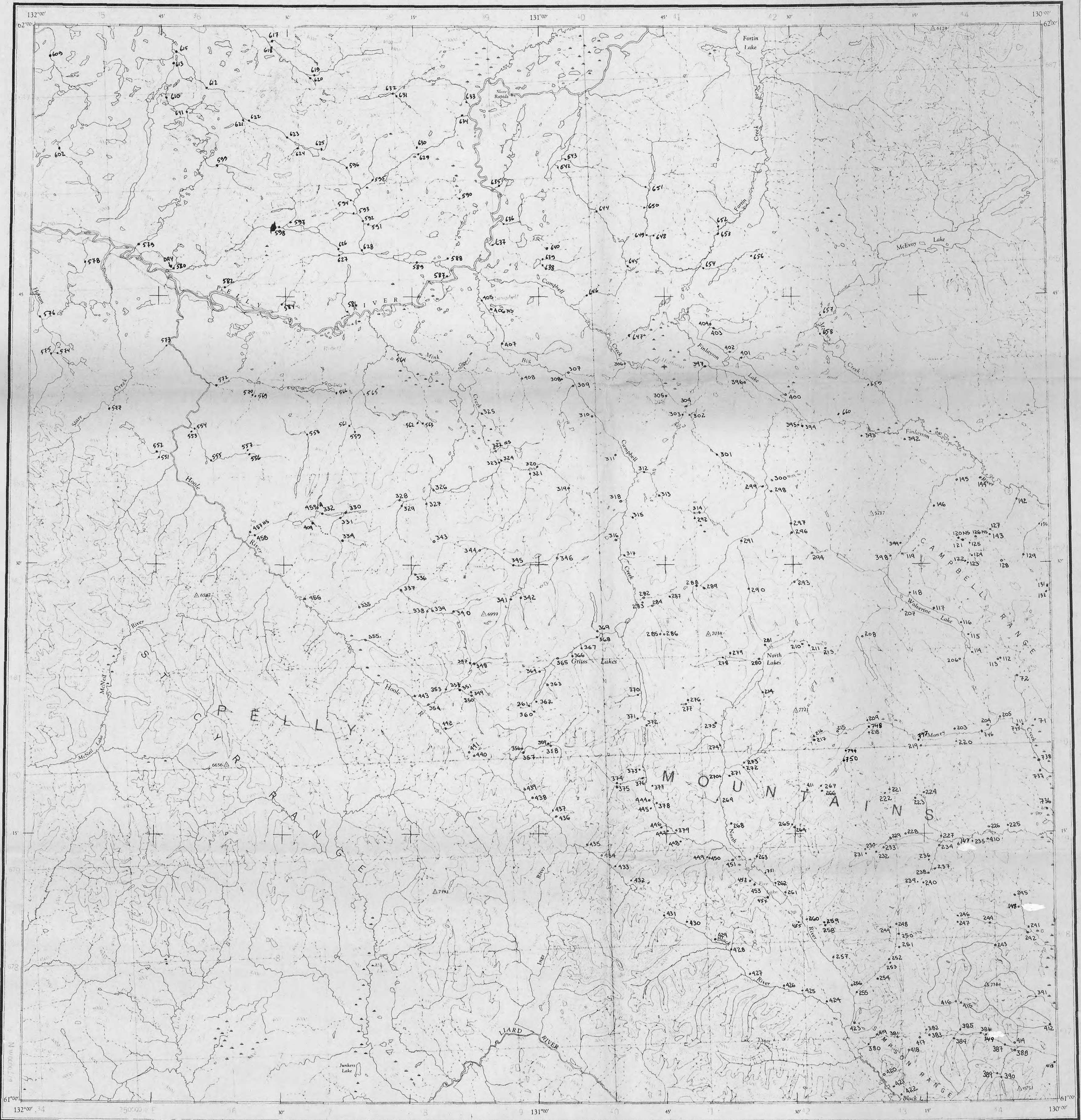


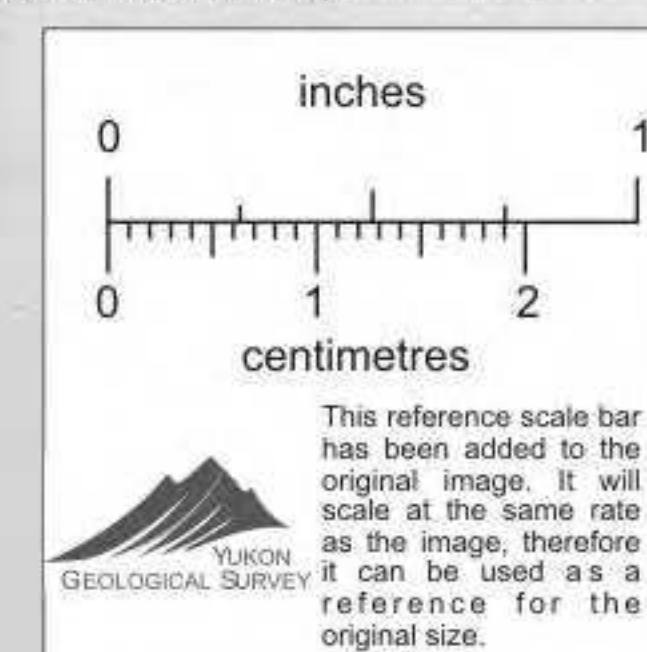
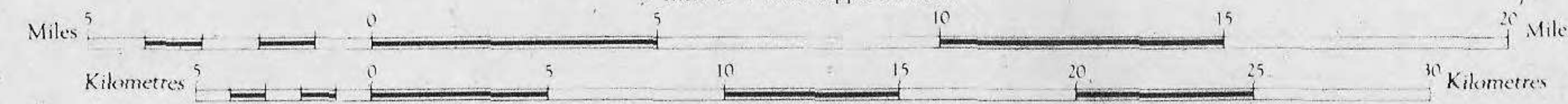
Military users refer to this map as Reference de la carte pour usage militaire.



Surveyed, compiled, drawn and printed by the ARMY SURVEY ESTABLISHMENT R.C.E., 1949-52.
Aerial photography by the R.C.A.F. 1949
Universal Transverse Mercator Projection.

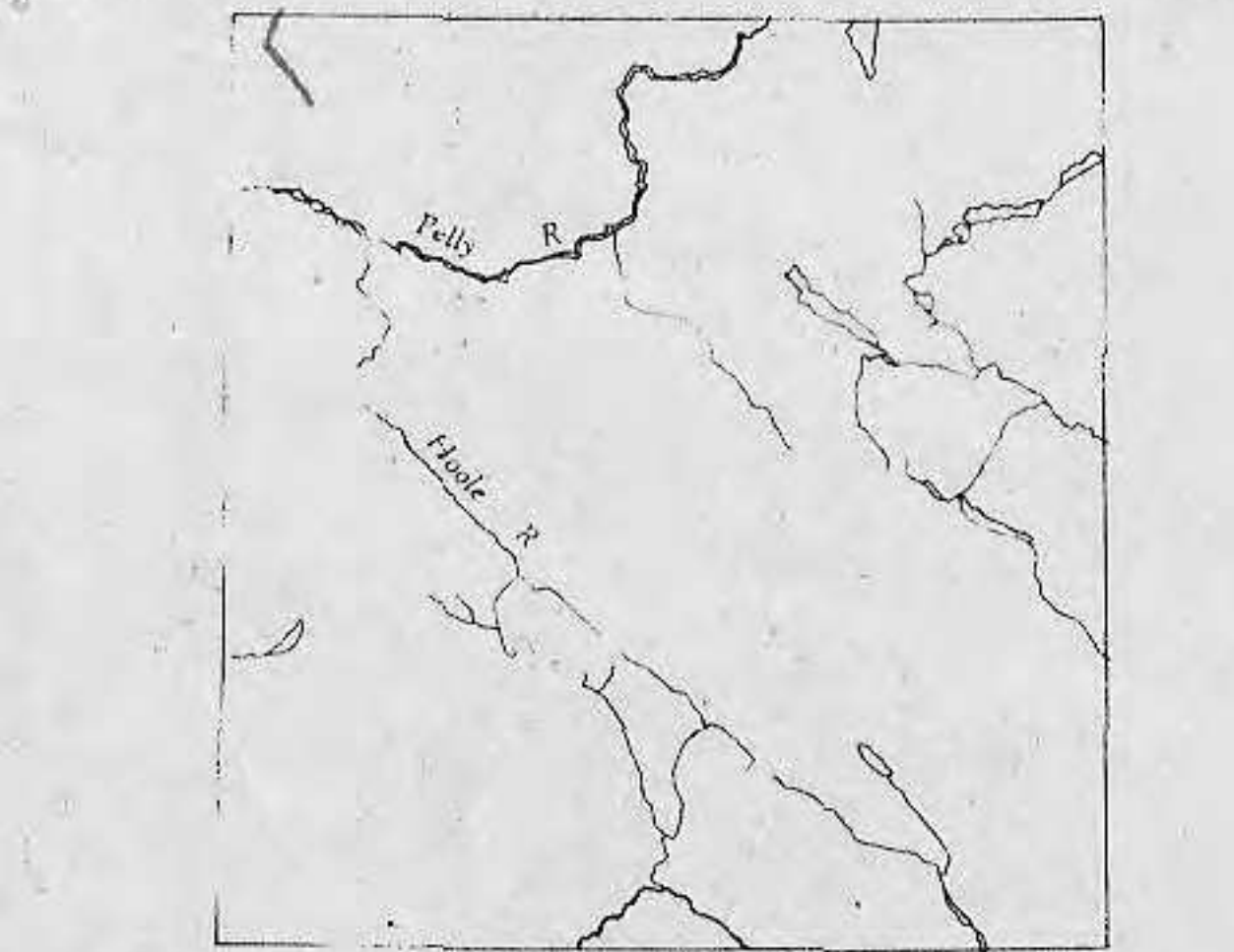
FINLAYSON LAKE YUKON TERRITORY

Scale 1 : 250,000
1 inch = 4 Miles Approximately



The general public may obtain copies of this map from the Map Distribution Office, Dept. of Mines and Technical Surveys, Ottawa.

THE DECLINATION OF THE COMPASS NEEDLE, 1952



The declination of the compass needle at any place along a red line is the declination given on that red line. At other places the declination is between those given on the neighboring red lines: that at the place marked A, the declination is between N. 34° 45' E. and N. 35° E. The quarterly declinations of the compass needle are decreasing 4.5 minutes annually.

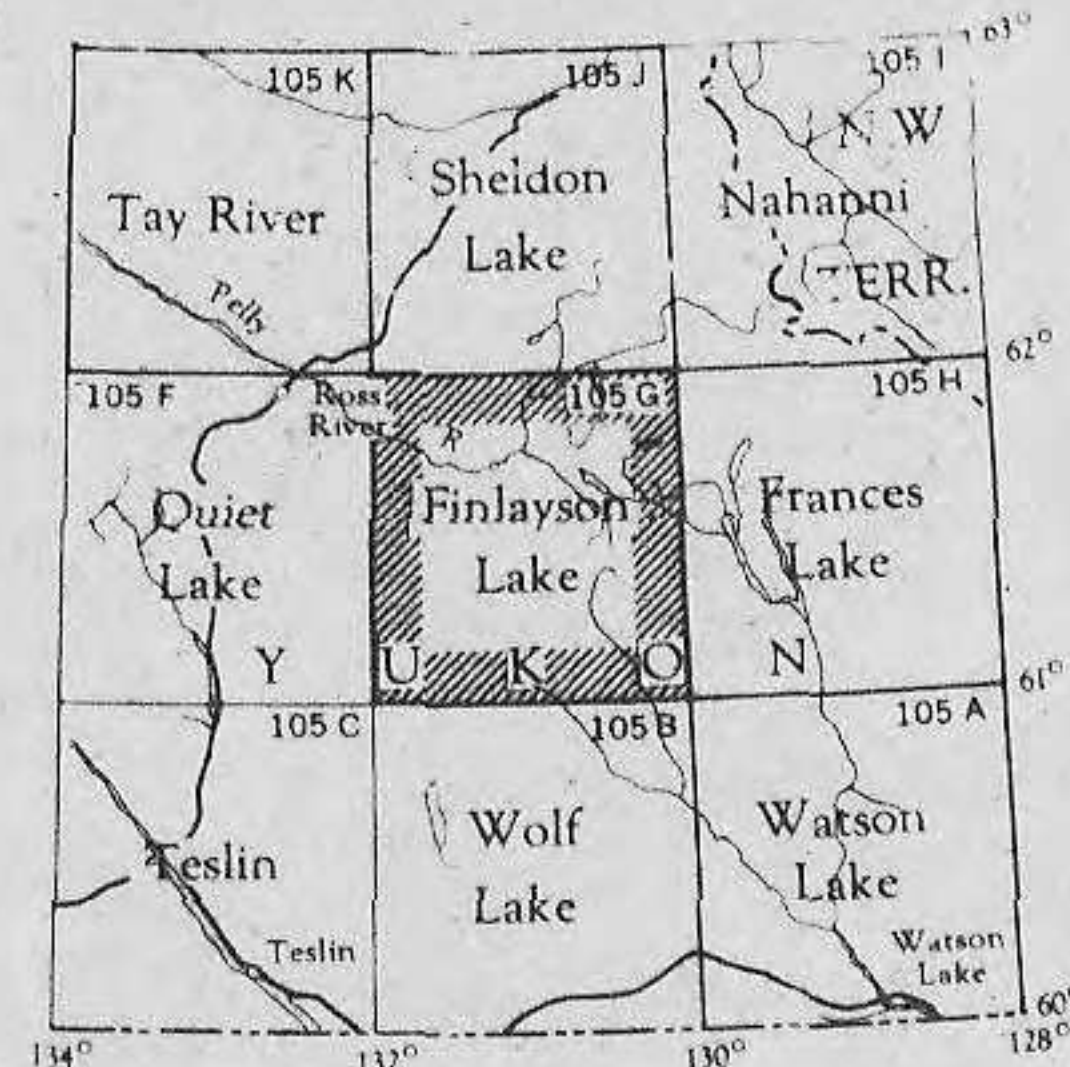
REFERENCE

Road, Loose Surface, All Weather	More than 2 Lanes	2 Lanes
Loose Surface, Less than 2 Lanes	All Weather	Dirt Weather
Trail		
Railway, Multiple Track		
Single Track		
Boundary, International		
Province or State		
County or District		
Reservations, Indian, Military, Park, etc.		

Contour interval 300 Feet.
All Elevations in Feet above Mean Sea Level.

REFERENCE

Triangulation Station	Spot Elevation, in feet	257
Contours, Elevation	Wooded Areas	
Depression	Swamp or Marsh	
Approximate		
Church, School		
Stream, Indestructible	Ferry	W.L. 241
Dam	Navigation Light	
Acoustic, on Falls	Elevation in Feet 250	
Main Electric Power Line	Mud	
	Sand	



NOTE: On the above index the sheets published are shown in green.

017673