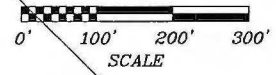


017731

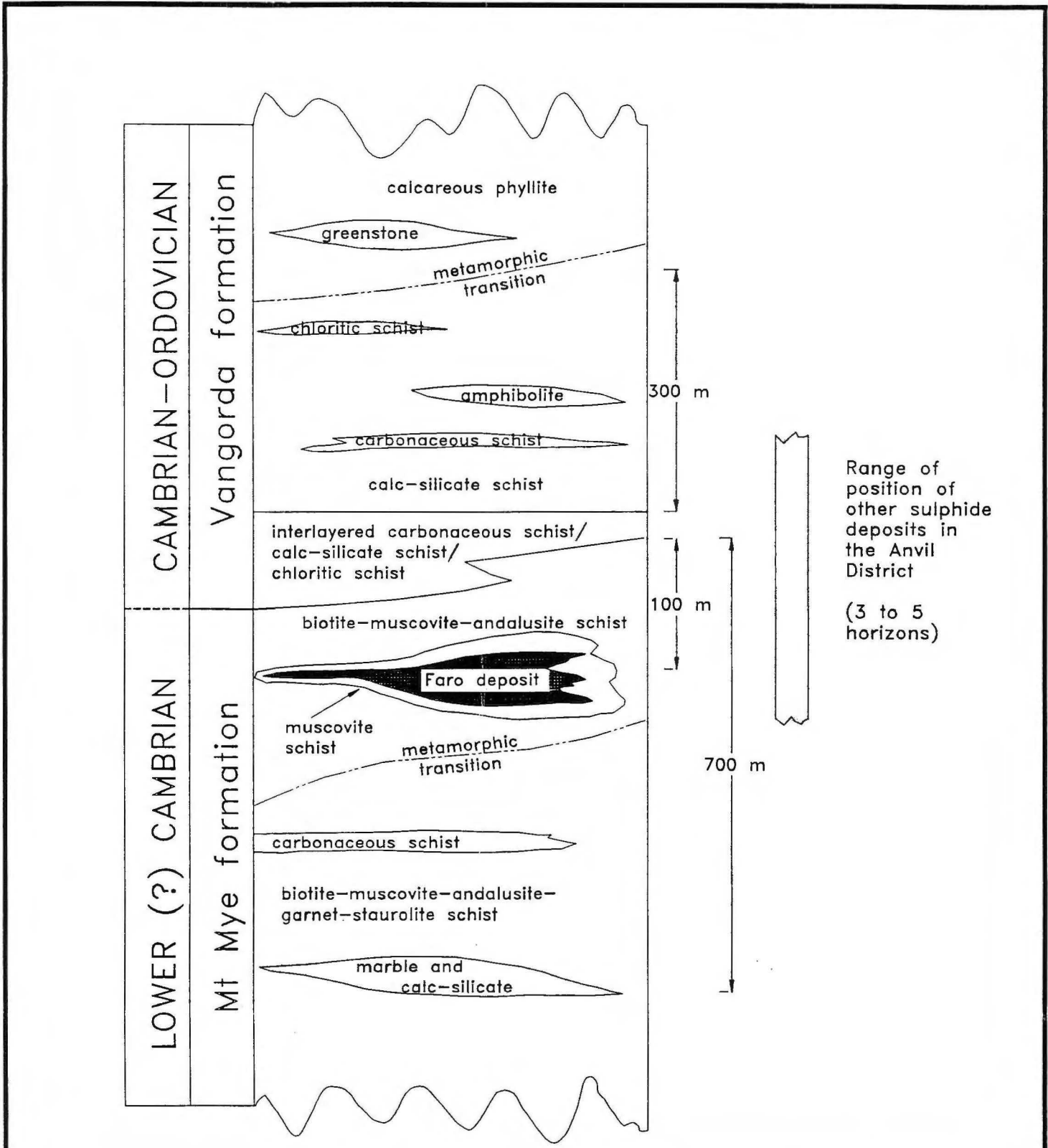


CURRAGH INC.

DRAWN BY: I. BILQUIST, F.G.C.	DATE: 06/10/90	SCALE:
REVISED BY: I. BILQUIST, F.G.C.	DATE: 04/10/92	1"=200'
FILE: ASBUILT, DDH, STRUCT, TEMPLATE ACAD V. 11		

FARO U/G MINE PLAN
TO SEPT 30, 1992

F.G.C.
PLATE

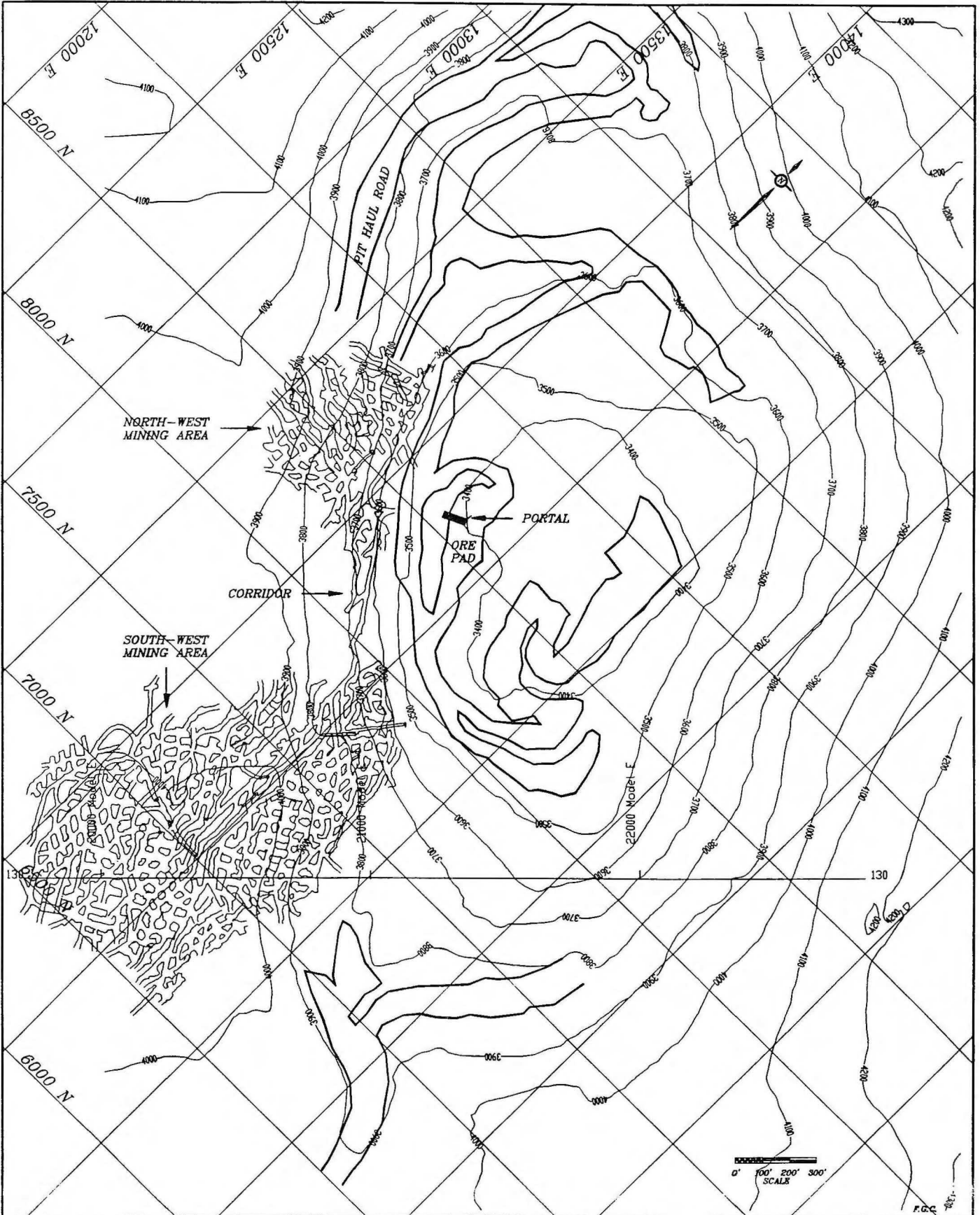


F.G.C.

CURRAGH INC.

DRAWN BY:
 A. ...ILQUIST, 21/09/92
 FILE:
 ANVLSTRA AUTOCAD V. 11

STRATIGRAPHIC SECTION
 OF THE FARO DEPOSIT



CURRAGH INC.

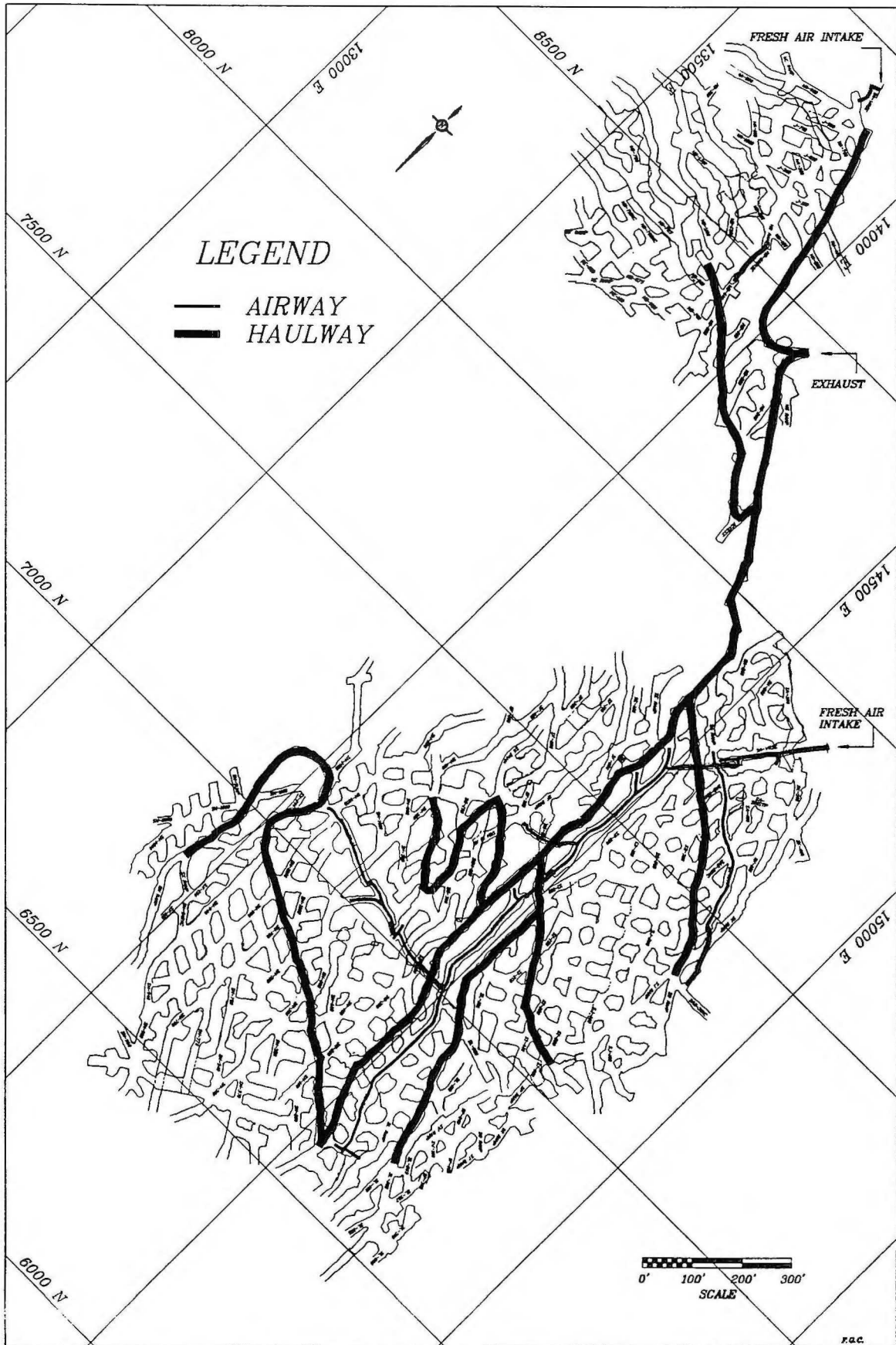
DRAWN BY: I. BILQUEST, F.G.C.	DATE: 06/10/90
REVISED BY: I. BILQUEST, F.G.C.	DATE: 14/09/92
FILE: FPITCONT	AUTOCAD V. 11

SCALE
1" = 500'

FARO PIT CONTOURS AND UNDERGROUND MINE PLAN

PIT-1

F.G.C.



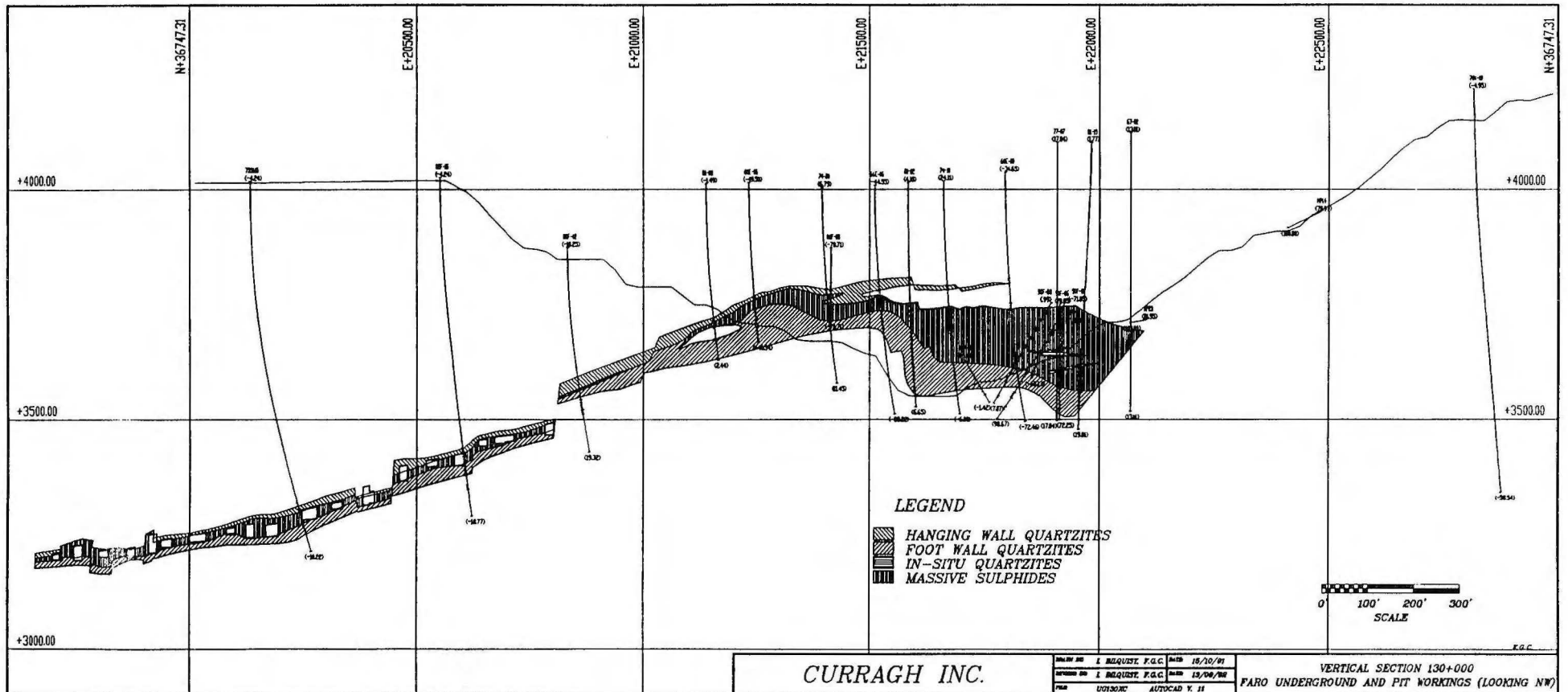
CURRAGH INC.

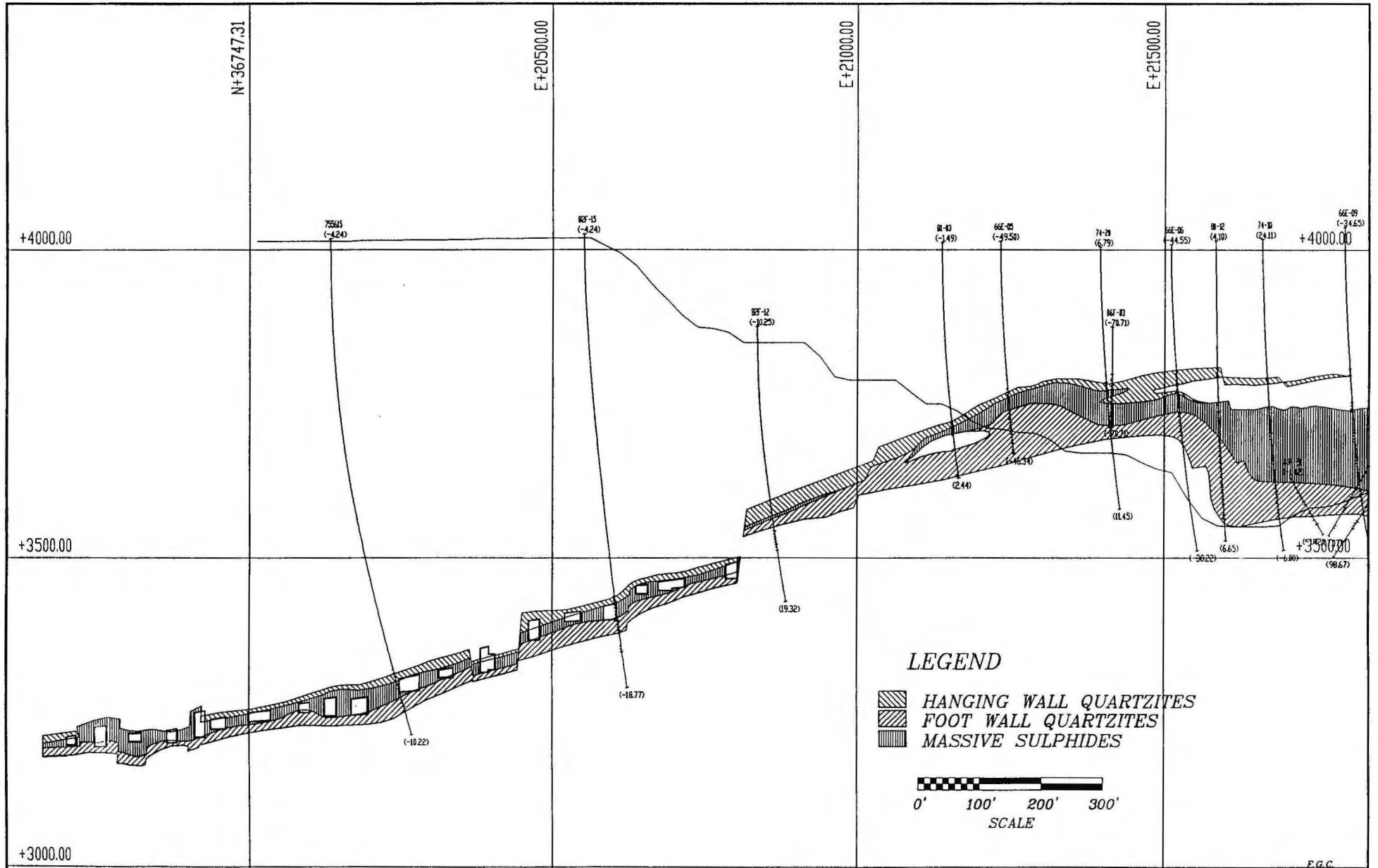
DRAWING NO. 1 BILQUIST, P.G.C. DATE 08/10/90
 REVISION NO. 1 BILQUIST, P.G.C. DATE 16/09/92
 FILE UCWYHWT AUTOCAD V. 11

SCALE
1"=300'

FARO U/G MINE PLAN
WITH HAULWAY AND AIRWAY

P.L.S. F.G.C.



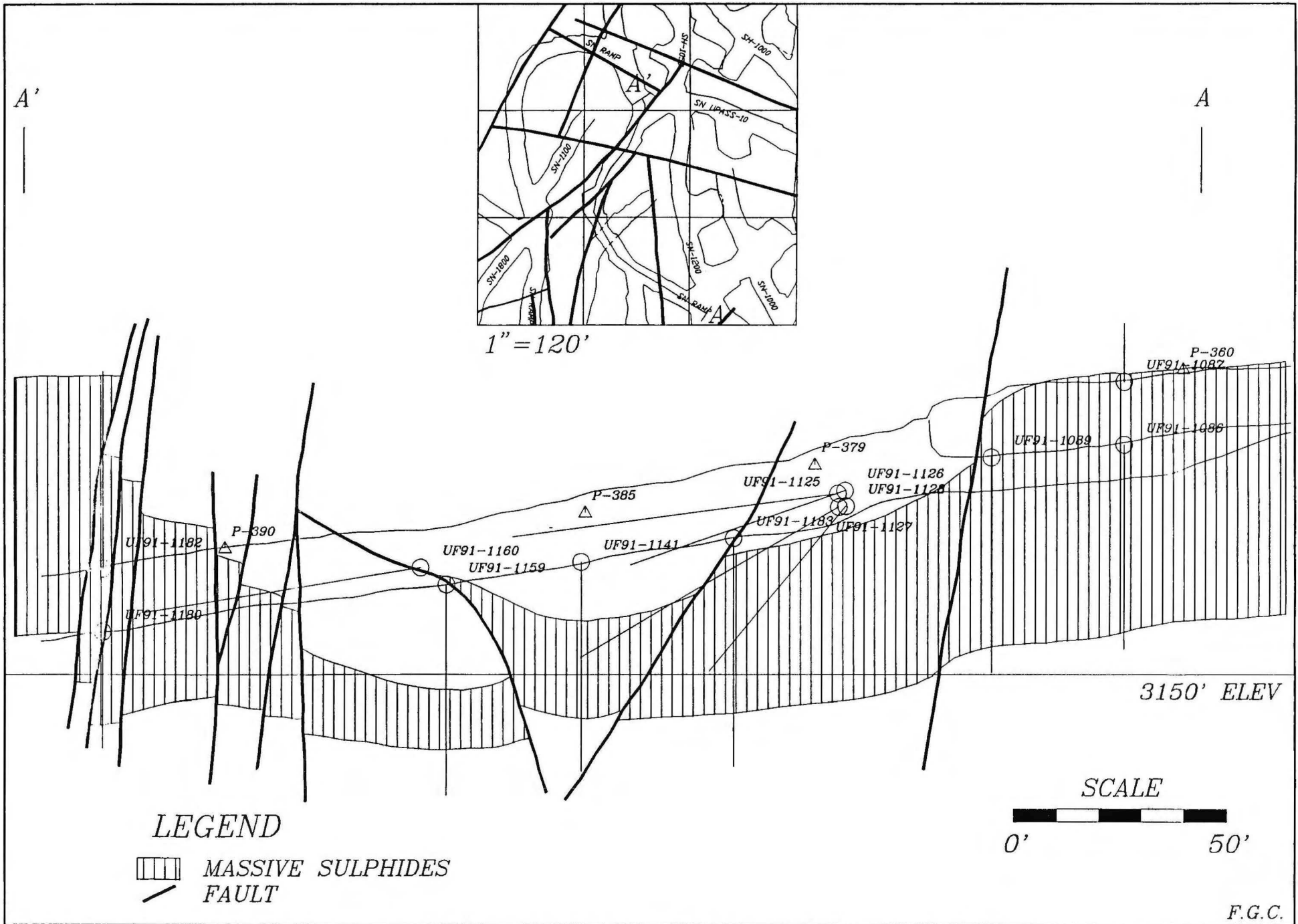


CURRAGH INC.

DRAWN BY:	L. BILQUIST, F.G.C.	DATE:	15/10/01
REVIEWED BY:	L. BILQUIST, F.G.C.	DATE:	13/09/02
FILE:	UG130XC2	AUTOCAD V. 11	

VERTICAL SECTION 130+000
 FARO UNDERGROUND AND PIT WORKINGS (LOOKING NW)

F.G.C.

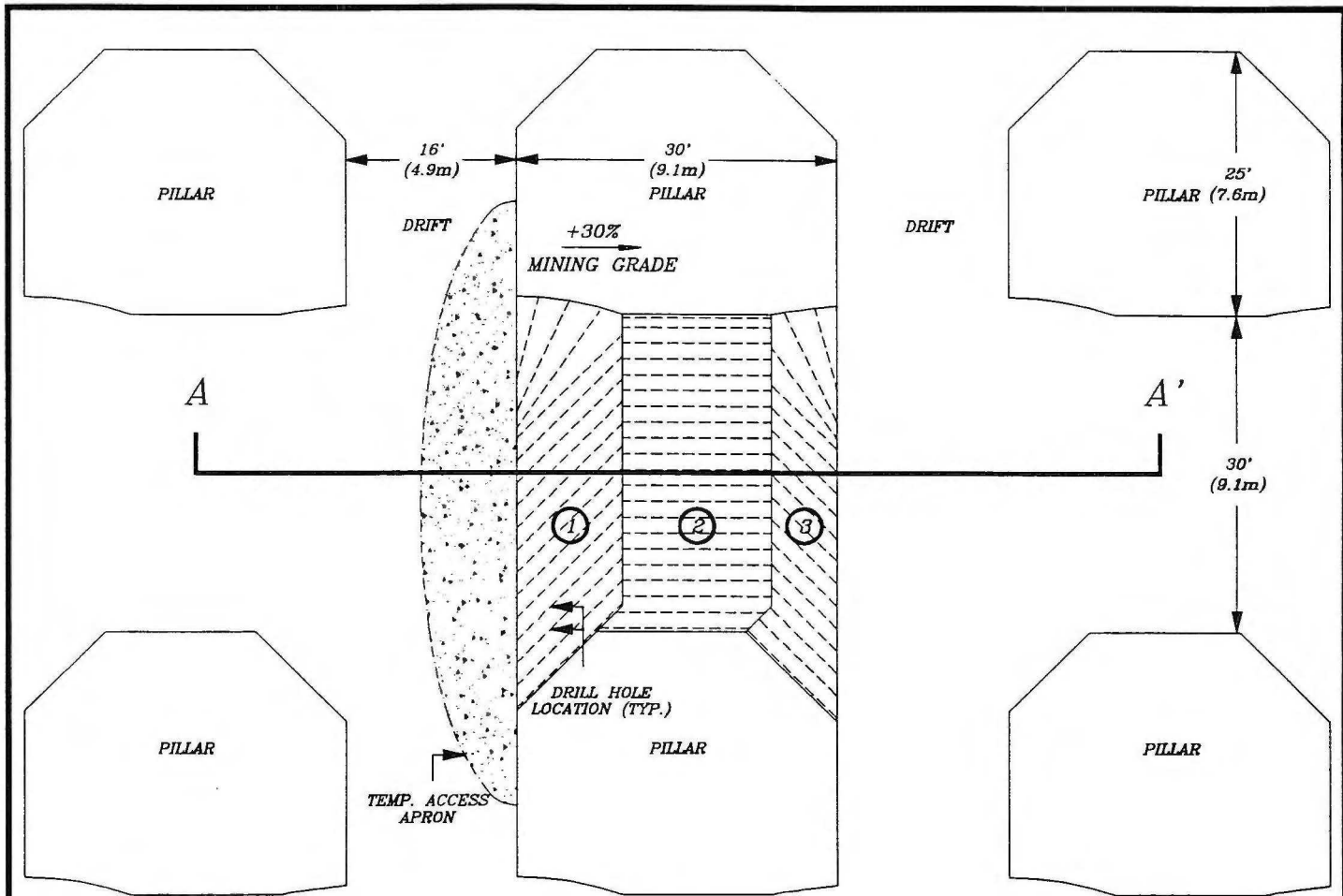


CURRAGH INC.

DRAWN BY: I. BILQUIST, F.G.C. 26/02/92
 SCALE: 1"=30'

SN RAMP PROFILE

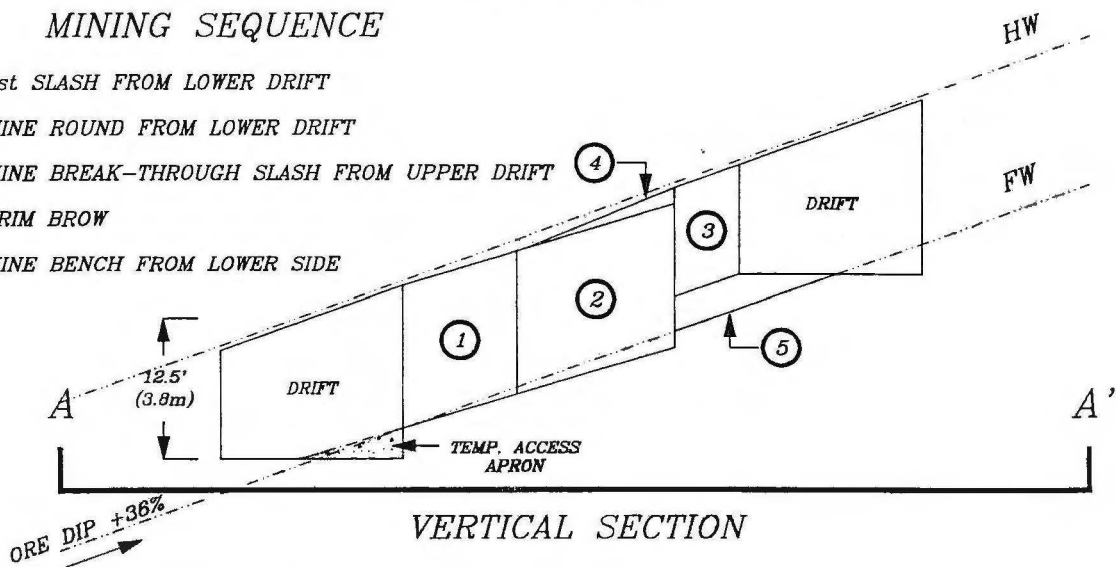
F.G.C.



PLAN VIEW

MINING SEQUENCE

- ① 1st SLASH FROM LOWER DRIFT
- ② MINE ROUND FROM LOWER DRIFT
- ③ MINE BREAK-THROUGH SLASH FROM UPPER DRIFT
- ④ TRIM BROW
- ⑤ MINE BENCH FROM LOWER SIDE



VERTICAL SECTION

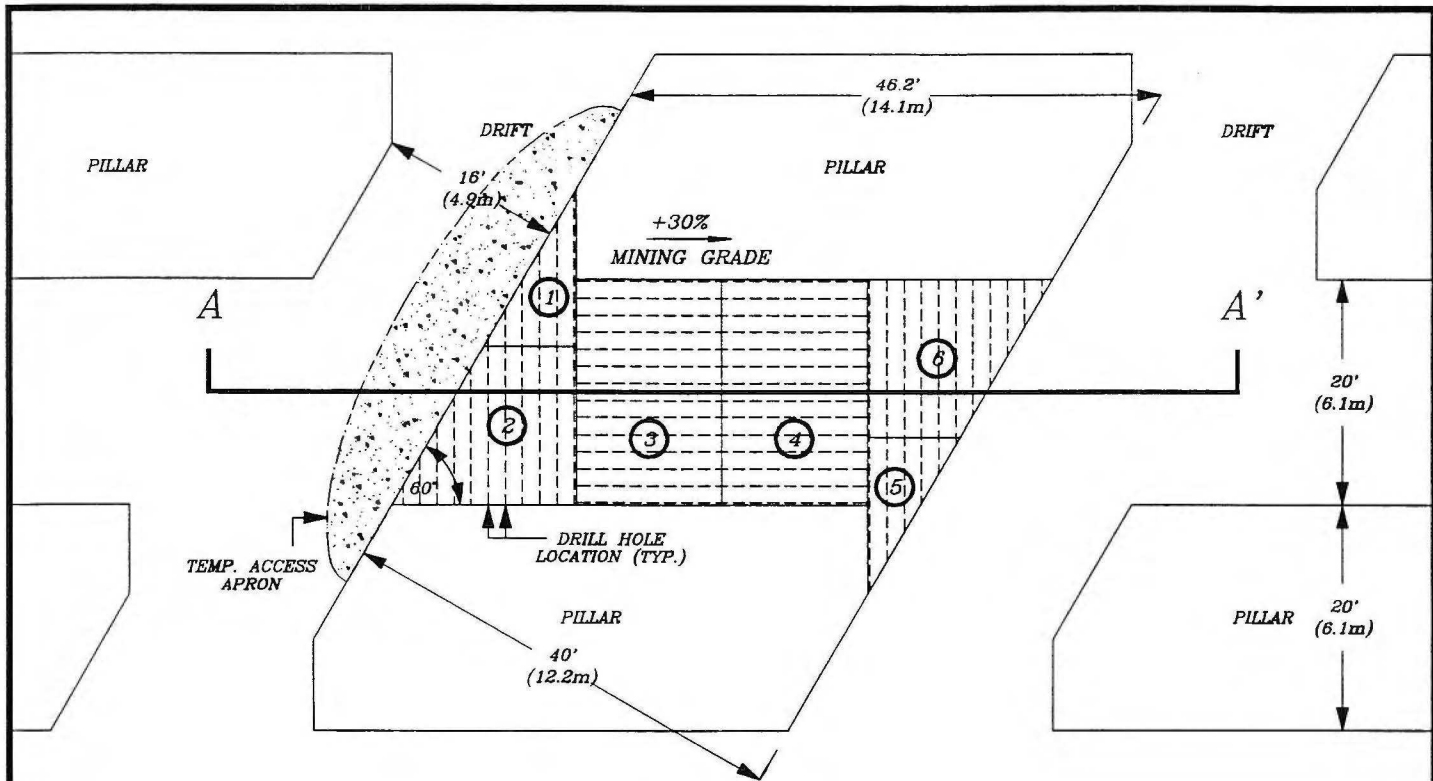
F.G.C.

CURRAGH INC.

DRAWN BY:
I. BILQUIST, 17/09/92

FILE:
STOPE AUTOCAD V. 11

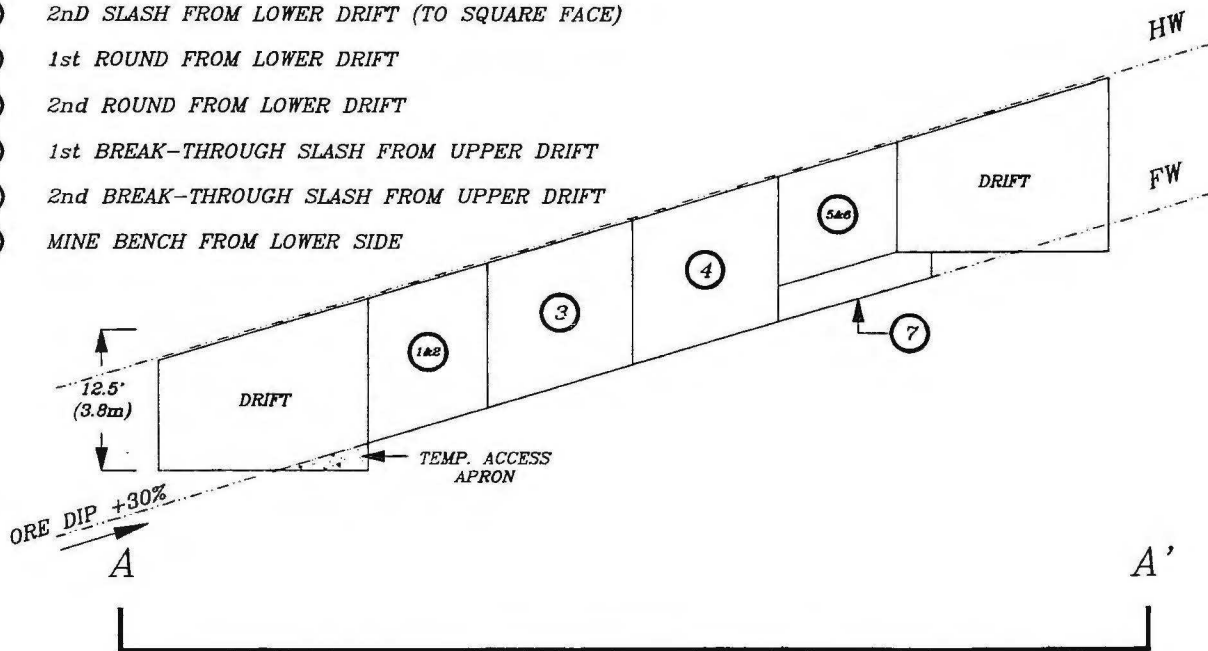
TYPICAL SINGLE PASS
30'x30' UP-DIP STOPE



PLAN VIEW

MINING SEQUENCE

- ① 1st SLASH FROM LOWER DRIFT
- ② 2nd SLASH FROM LOWER DRIFT (TO SQUARE FACE)
- ③ 1st ROUND FROM LOWER DRIFT
- ④ 2nd ROUND FROM LOWER DRIFT
- ⑤ 1st BREAK-THROUGH SLASH FROM UPPER DRIFT
- ⑥ 2nd BREAK-THROUGH SLASH FROM UPPER DRIFT
- ⑦ MINE BENCH FROM LOWER SIDE



VERTICAL SECTION

F.G.C.

CURRAGH INC.

DRAWN BY:
I. BILQUIST, 17/09/92

FILE:
STOPE AUTOCAD V. 11

TYPICAL SINGLE PASS
20' WIDE X-PITCH STOPE

Table 1

The major pieces of equipment list as follows:

- 1 - Three boom electric hydraulic jumbo
- 1 - Two boom electric hydraulic jumbo
- 1 - Loading jumbo
- 1 - Intermediate loader
- 2 - 8 cu. yd. scooptram
- 1 - 5 cu. yd. scooptram
- 1 - 2.5 cu. yd. scooptram
- 3 - 26 cu. yd. trucks
- 1 - Rockbolt jumbo
- 2 - Tractor type service vehicles
- 1 - D-3 dozer
- 1 - Boom truck
- 2 - 600 cfm compressor