

BIG INDIAN FAULT

PHYLITE

PHYLITE

BXA

BXA

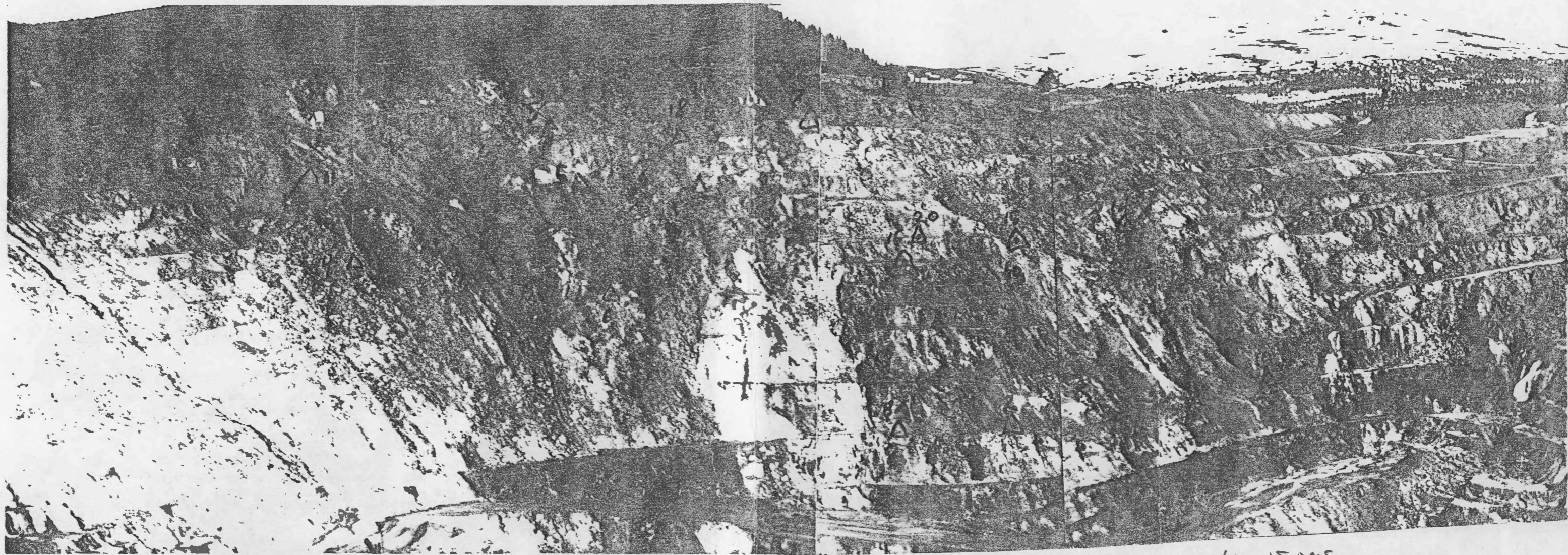
IOE

IOE

FAULT

FARO FAULT





10F quartz feldspar porphyry
 Montmorillonite bearing

Δ7 + Δ18 Nonmovement.

OTHERS MOVING
 AT CONSTANT RATE

last 15 days.

Δ8A - Δ12 - NO MOVEMENT.
 Δ10 - SLIGHT MOVEMENT.
 Δ17 - 90 → 100 → 130mm/day
 Δ16 - 45 → 45 mm/day
 Δ19 - NEW Δ20 NEW
 Δ14 - 110mm → 175mm
 Δ15 - ✓

AS OF July 3/91

July 8 - 6m Δ15 - 200mm Z
 Δ17 - 190mm.

10500 N

1:2400

FARO PIT

PERIOD: _____

1:2400 FARO PIT EAST WALL

FAULT LOCATIONS.

July 31/91

10000 N

HAULROAD TO E PHASE

A-Y
SUMP
FAULT

9500 N

9000 N

Sump

NB 56°

52°

LB

IR 76°

BI
SPLAY 45°

BIG
INDIAN

8500 N

8000 N

7500 N

14500 E

15000 E

15500 E

16000 E

MP13
4196

MP3
4203

MP2
4320

MP11
4992

MP4
3951

MP5
4091

MP1
4346

MP18
4156

MP7
4192

MP1
3634
DESTROYED
REPLACED BY
MP21

MP18A
3637

MP21

MP20
3959

MP17
3796

MP16
3913

MP19
3875

MP15
3945

MP22

MP14
3958

MP10
3639

MP12
3637
DESTROYED
REPLACED BY
MP12

MP10
3639

89°

75°