

100 SCALE GEOLOGIC SECTIONS

PELLEY RIVER PROSPECT

PROSPECTORS AIRWAYS COMPANY, LTD.

YUKON TERRITORY, CANADA

SEE ACCOMPANYING PLAN MAP FOR LOCATIONS

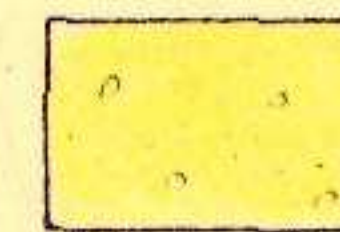
FEBRUARY, 1955

BY: RESEARCH & EXPLORATION DEPT.

PHELPS DODGE CORPORATION

017817

EXPLANATION



OVERBURDEN



MASSIVE SULPHIDES



GRAPHITIC SCHIST

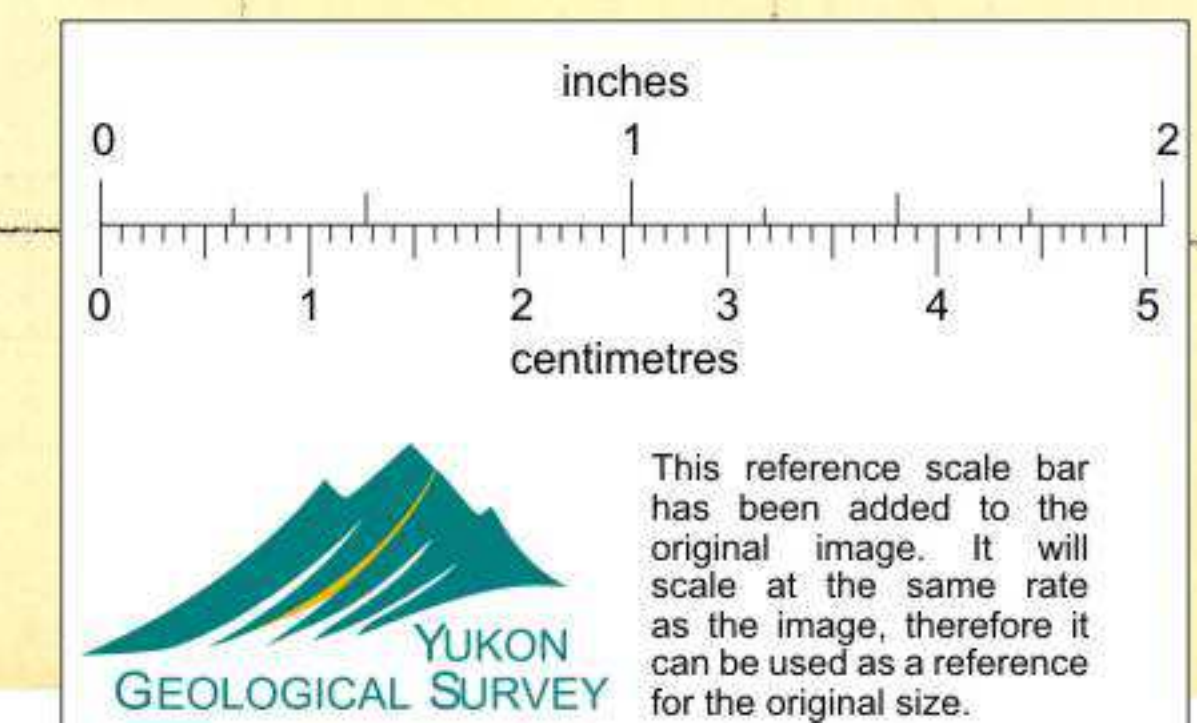
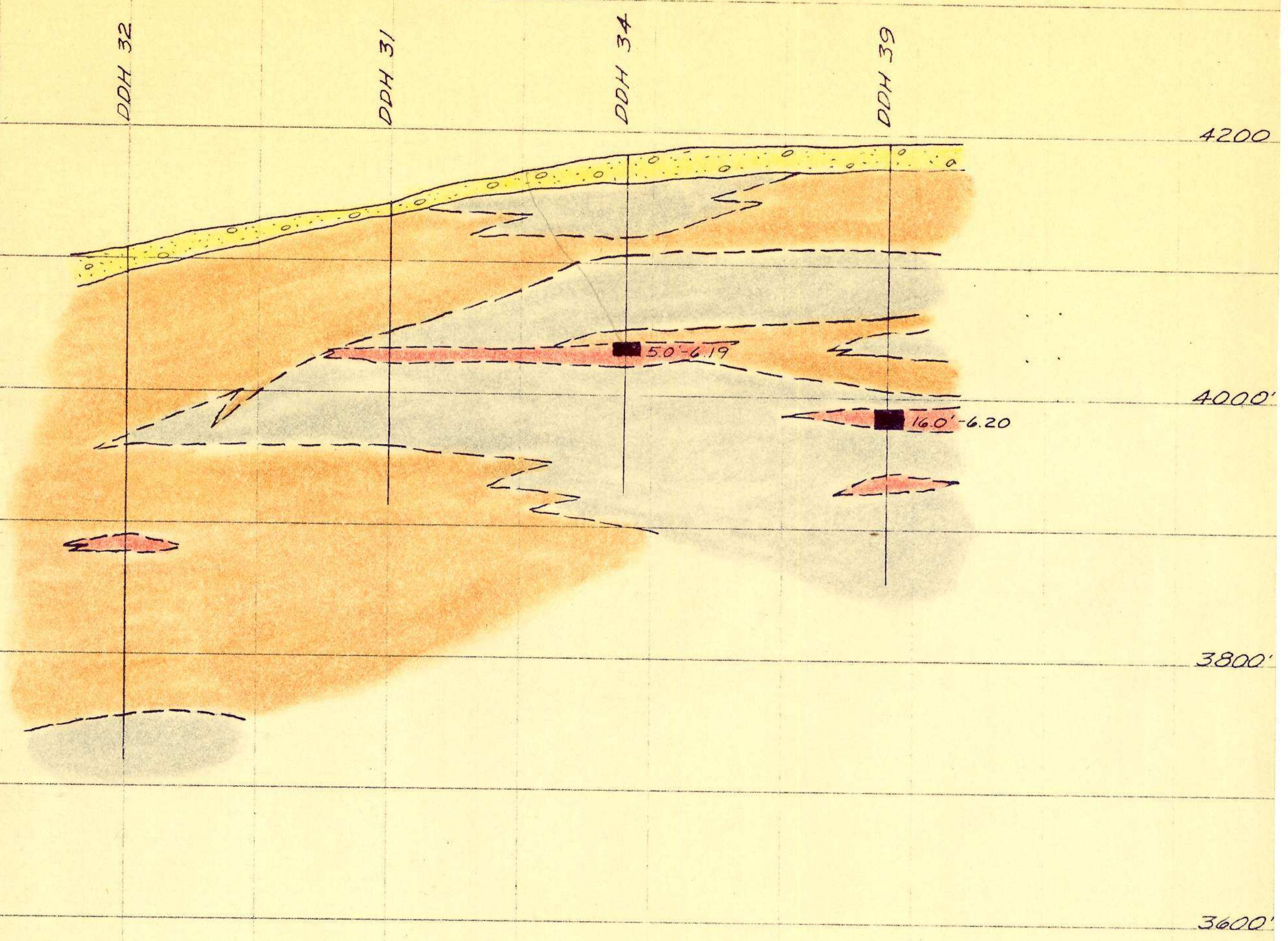


SERICITIC SCHIST

Ore sections cut by D.D. holes reported in feet followed by the combined Lead-Zinc assay.

NOTE:

Ore cutoff taken as 3% combined Lead-Zinc but with general overall assay expected to exceed 5% combined Lead-Zinc.



DDH 19 Proj. 35' SE

DDH 2

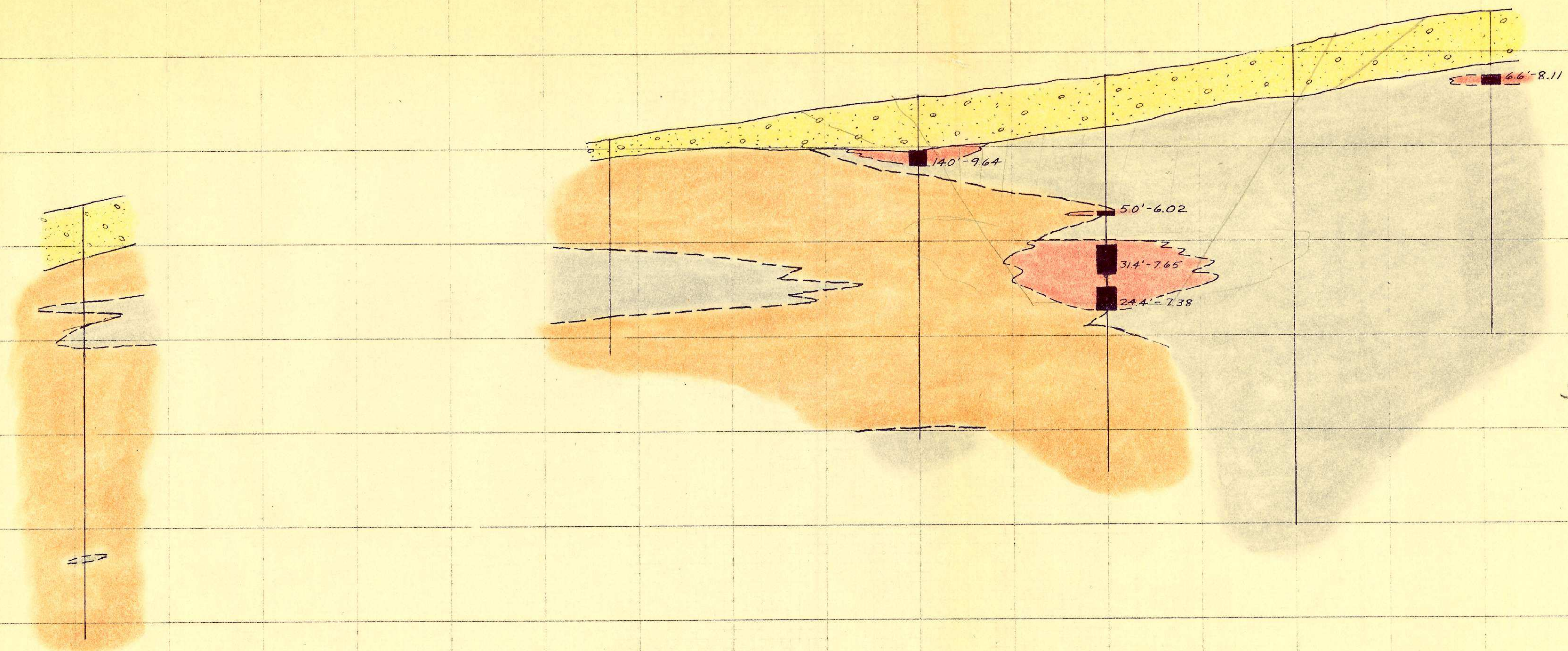
DDH 28

DDH 30

DDH 29

DDH 36

4200'



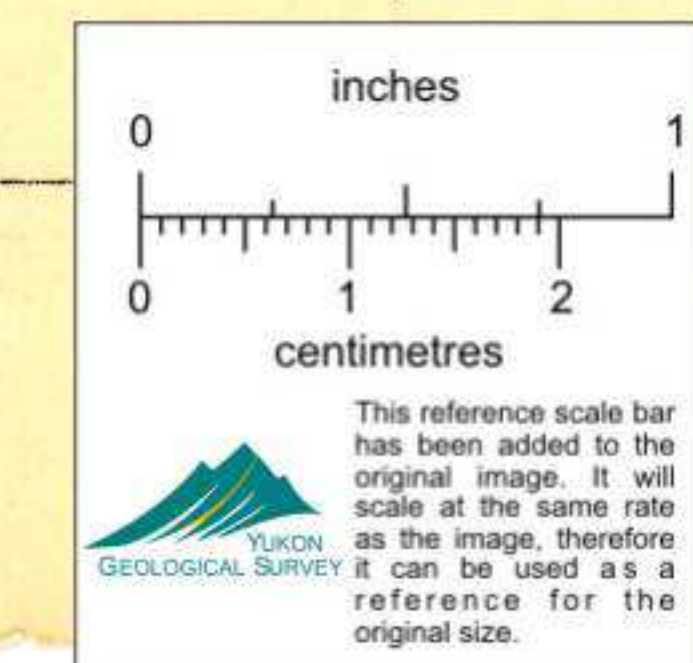
a^B = A cu. yd. H tan.

b^B = B cu. yd. R waste
A.R. — 4000'

c^B = 0 cu. yd. ore.
0.38 T. tan ore
3800'

Sec-1-(A)

$\frac{10.5}{27}$ cu. Ft
0.38 cu. yd.
3600'



1985 section # is 2W

DDH 21 Proj. 70' NW

DDH 48 Proj. 80' NW

DDH 10

DDH 33 Proj. 90' NW

DDH 16

DDH 17 Proj. 140' NW

1.65 cu
1.65
0.65

Total Am... ore. $O_{cu} - T^e$
To - washer W
To - H fan W'

Total. Cont. fat.

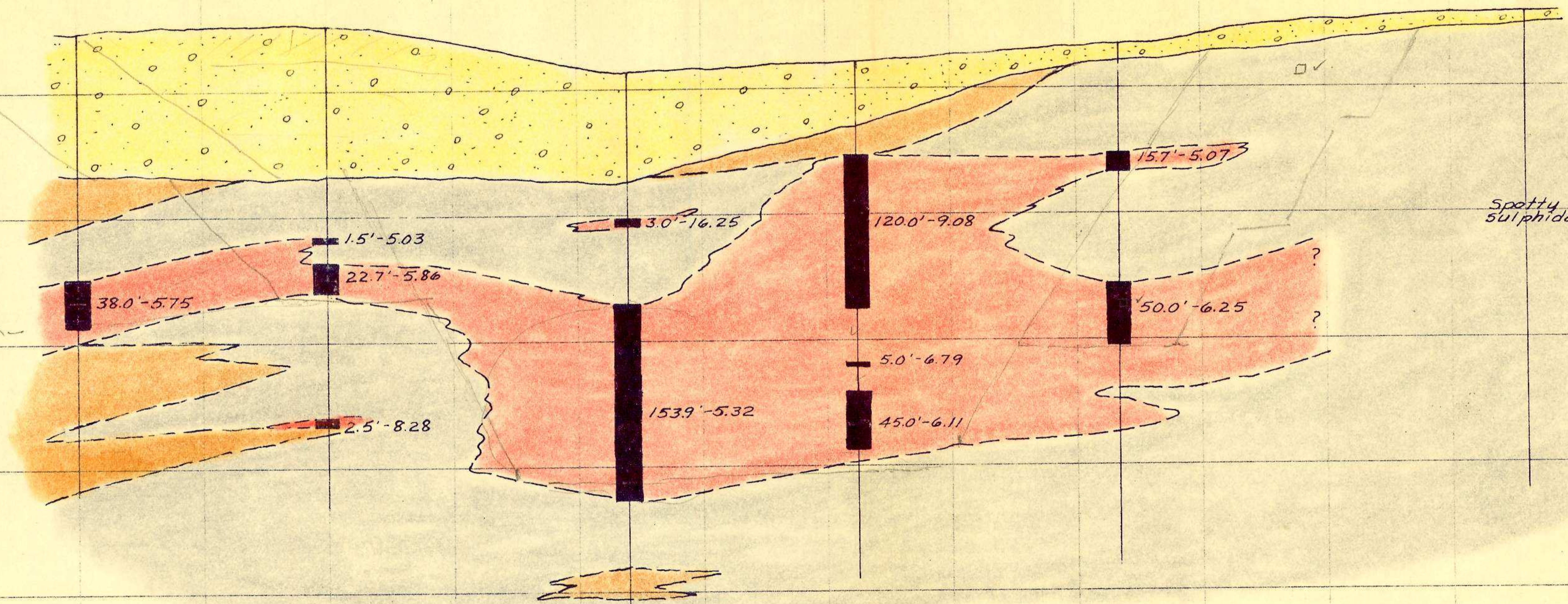
Total. Vol. $\frac{O}{T}$

(1.40)

1.90
1.20
↓ 1.10

800,000 cu ft. - per yr.
0.65' h. cu. - h fan.
1.65 -

4200'



Sec 4 - (J)

$\left(\frac{O}{T} + \frac{W}{T} \text{ cont.} \right)$

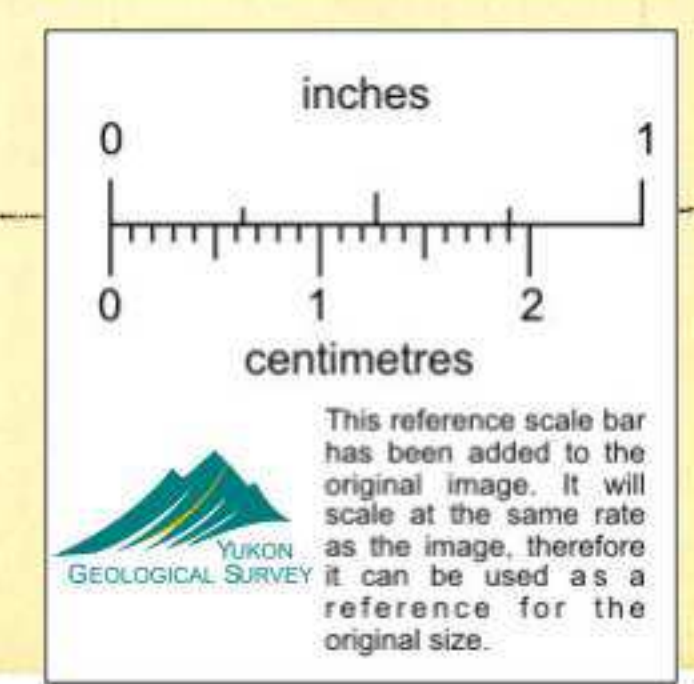
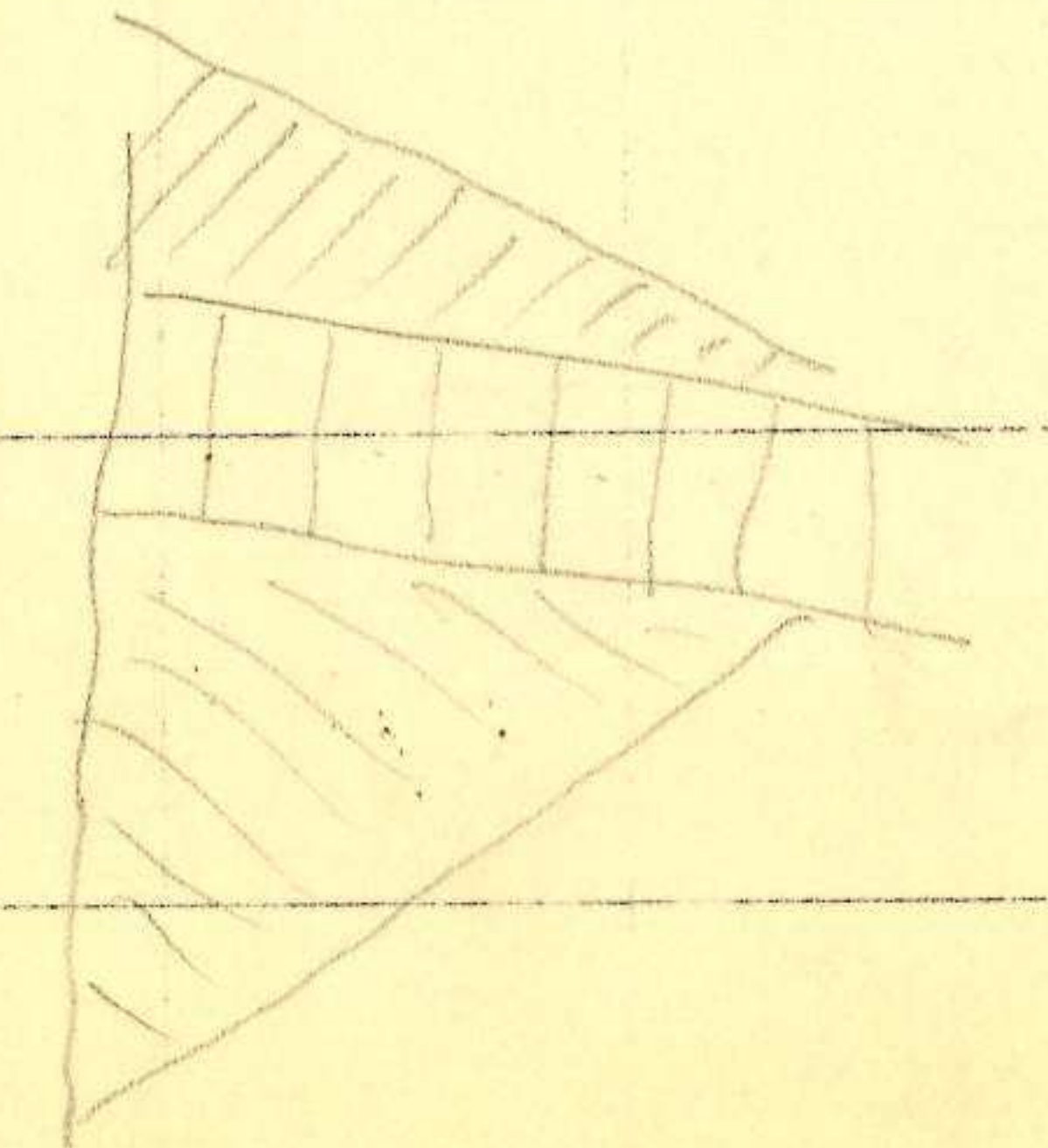
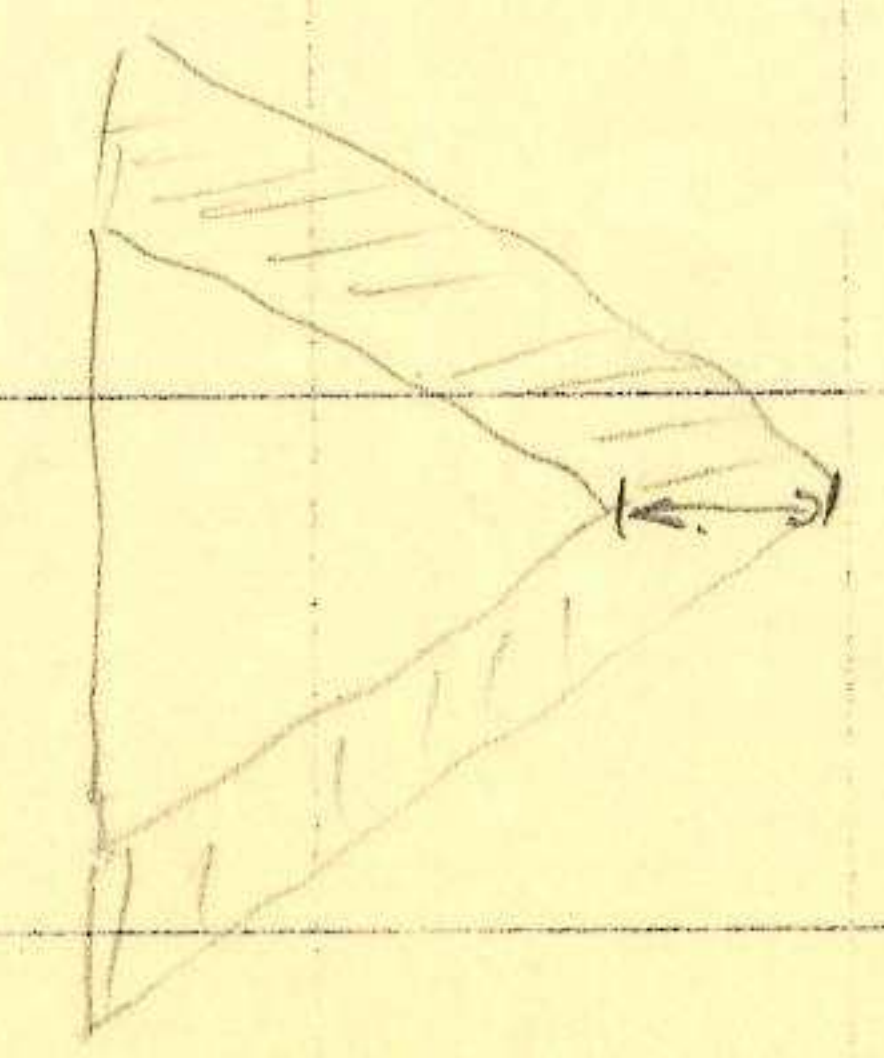
0.38 + 0.5 = 0.7 ✓

0.4 = 0.8 ✓

0.5 = 0.9 ✓

0.6

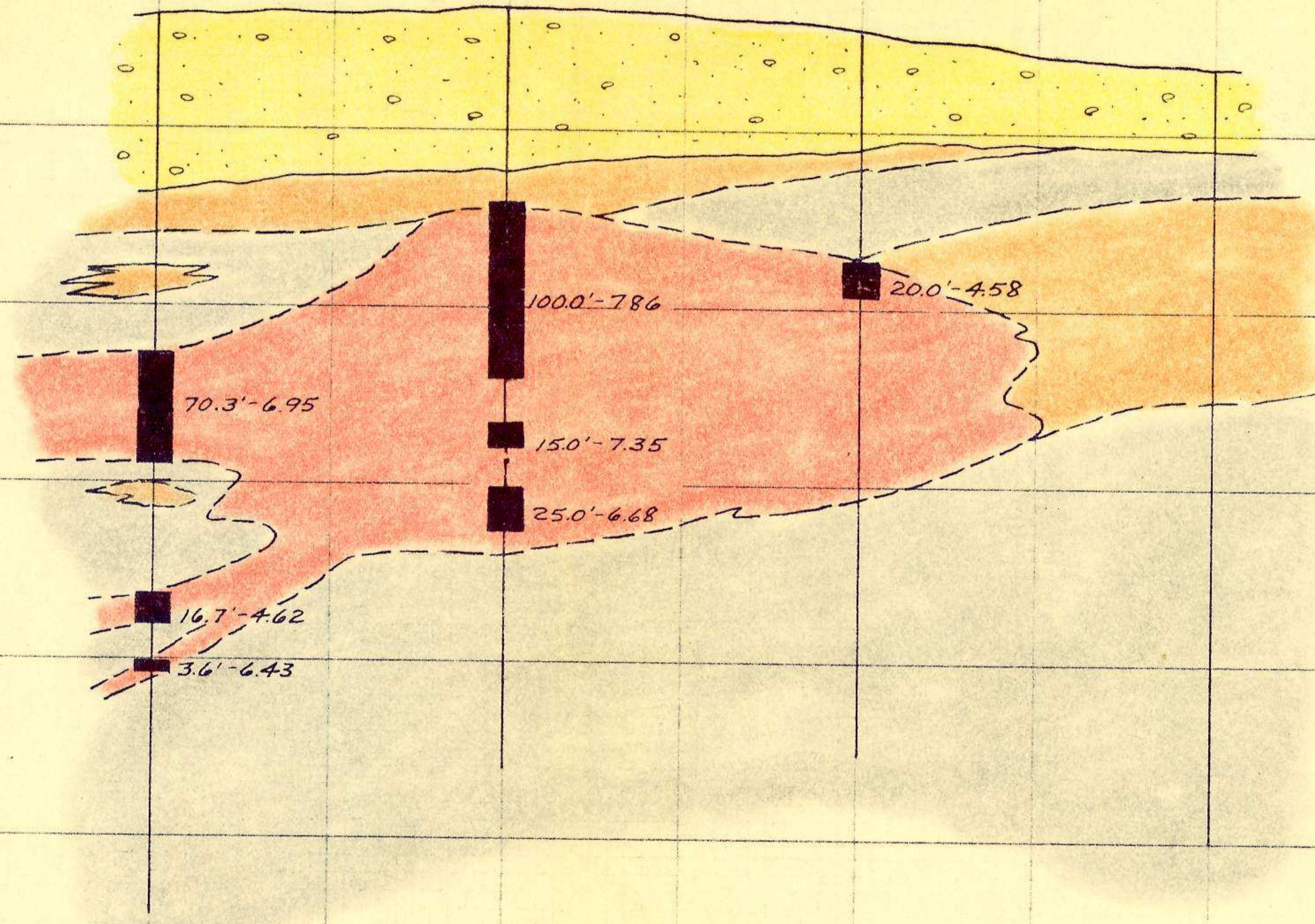
0.8



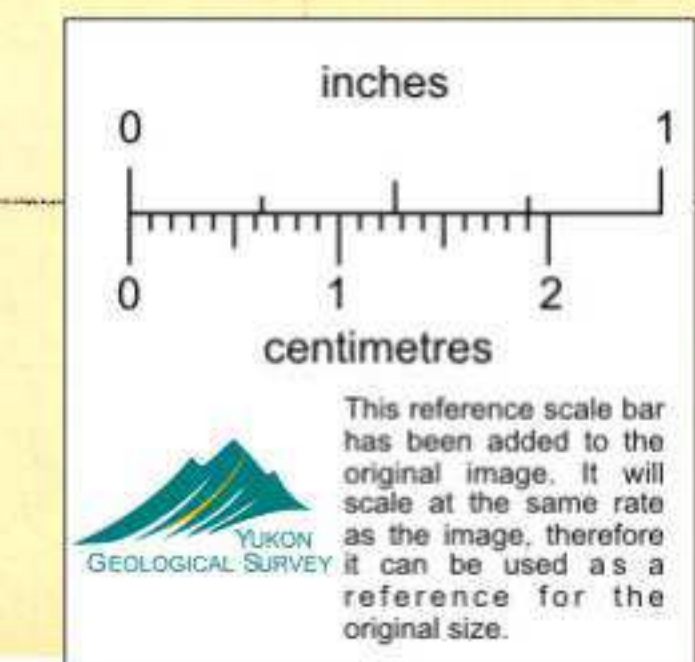
1985 section # 15 4E

129 96 95 94 126
 ↓ ↓ ↓ ↓ ↓
 DDH 20 DDH 47 DDH 35 DDH 38

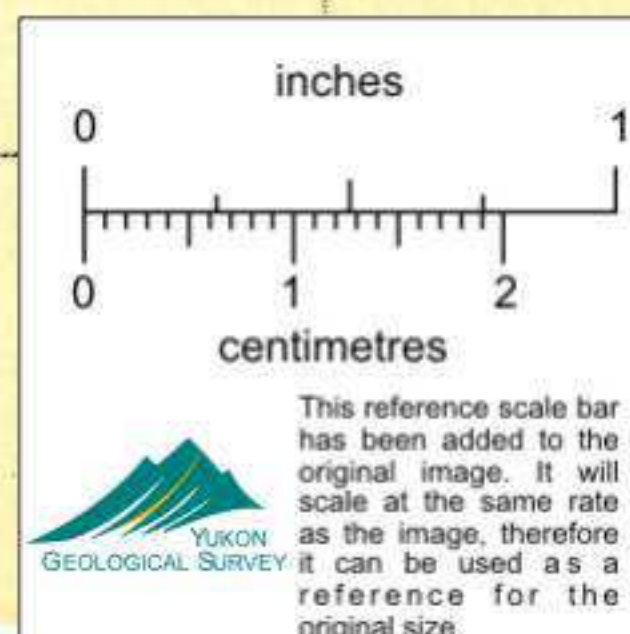
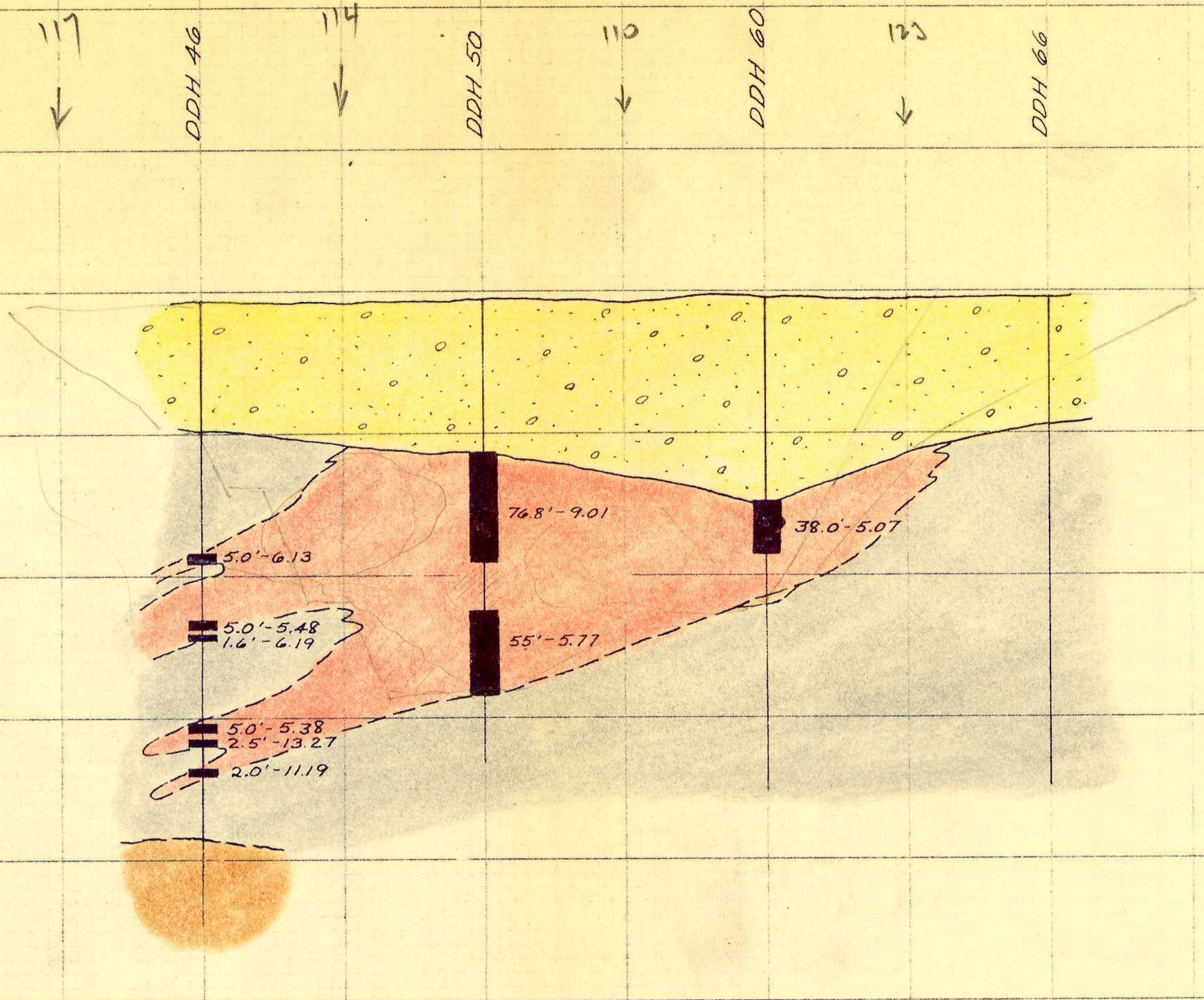
4200'
 4000'
 3800'
 3600'
 3400'



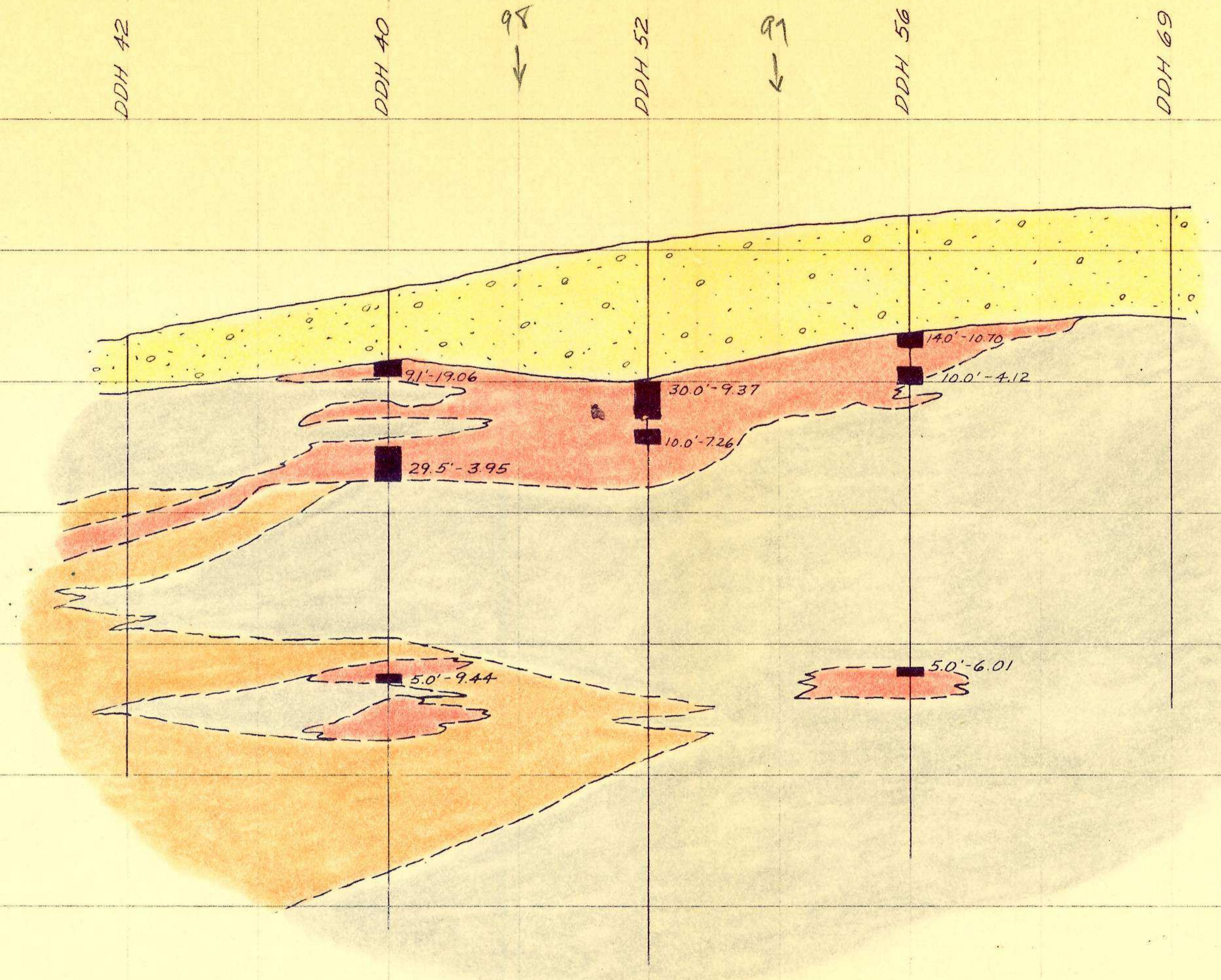
See 5 - (E)



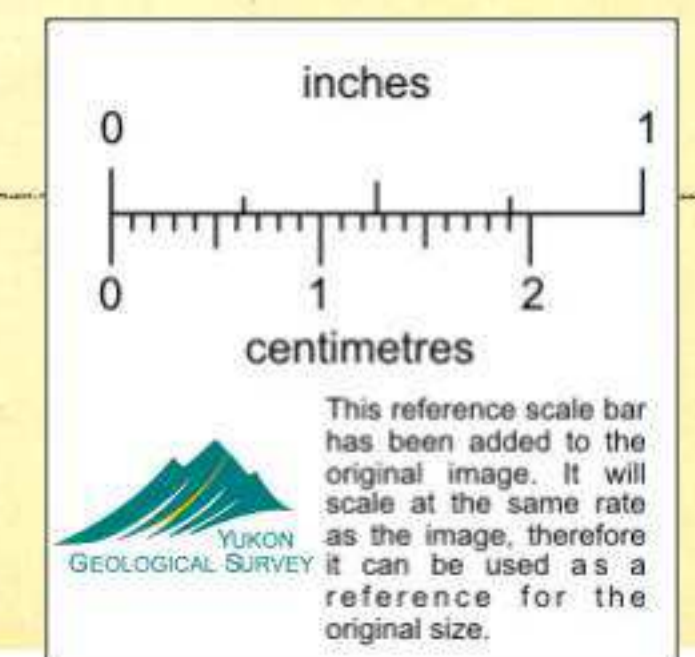
1985 Section # 15 6E

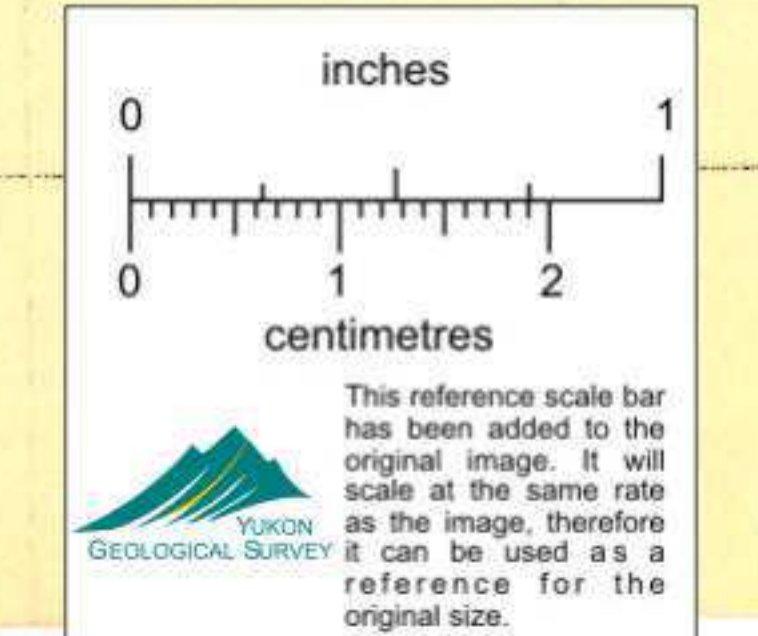
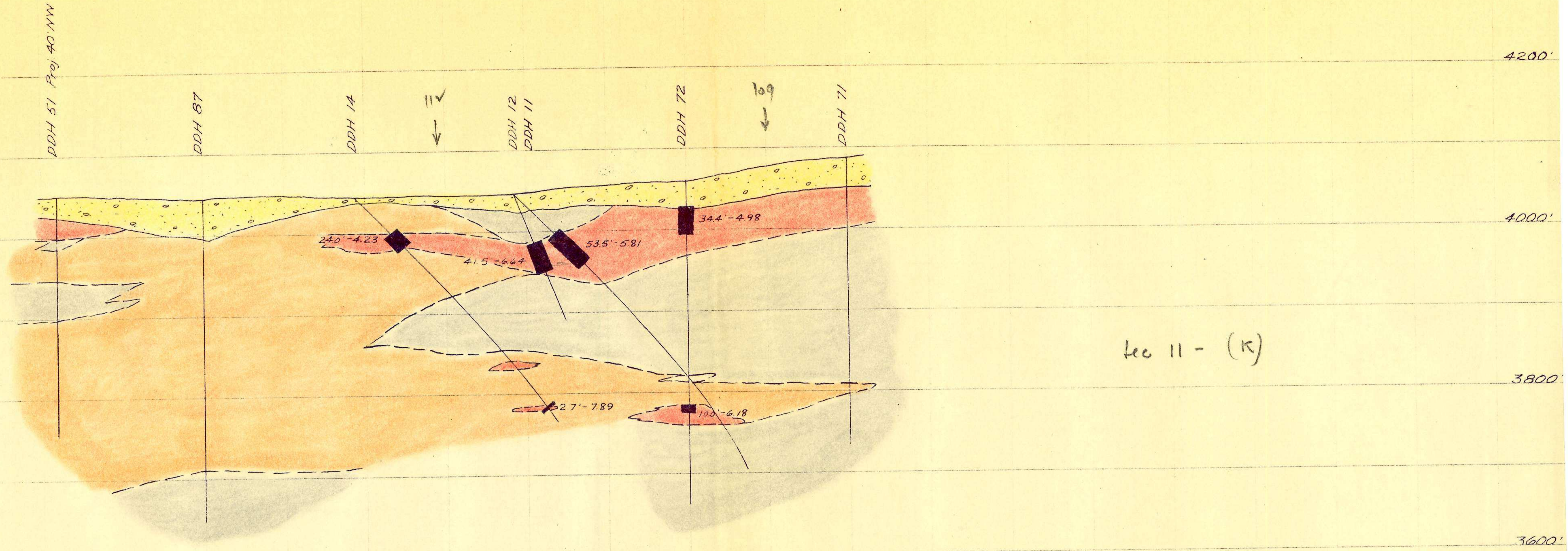


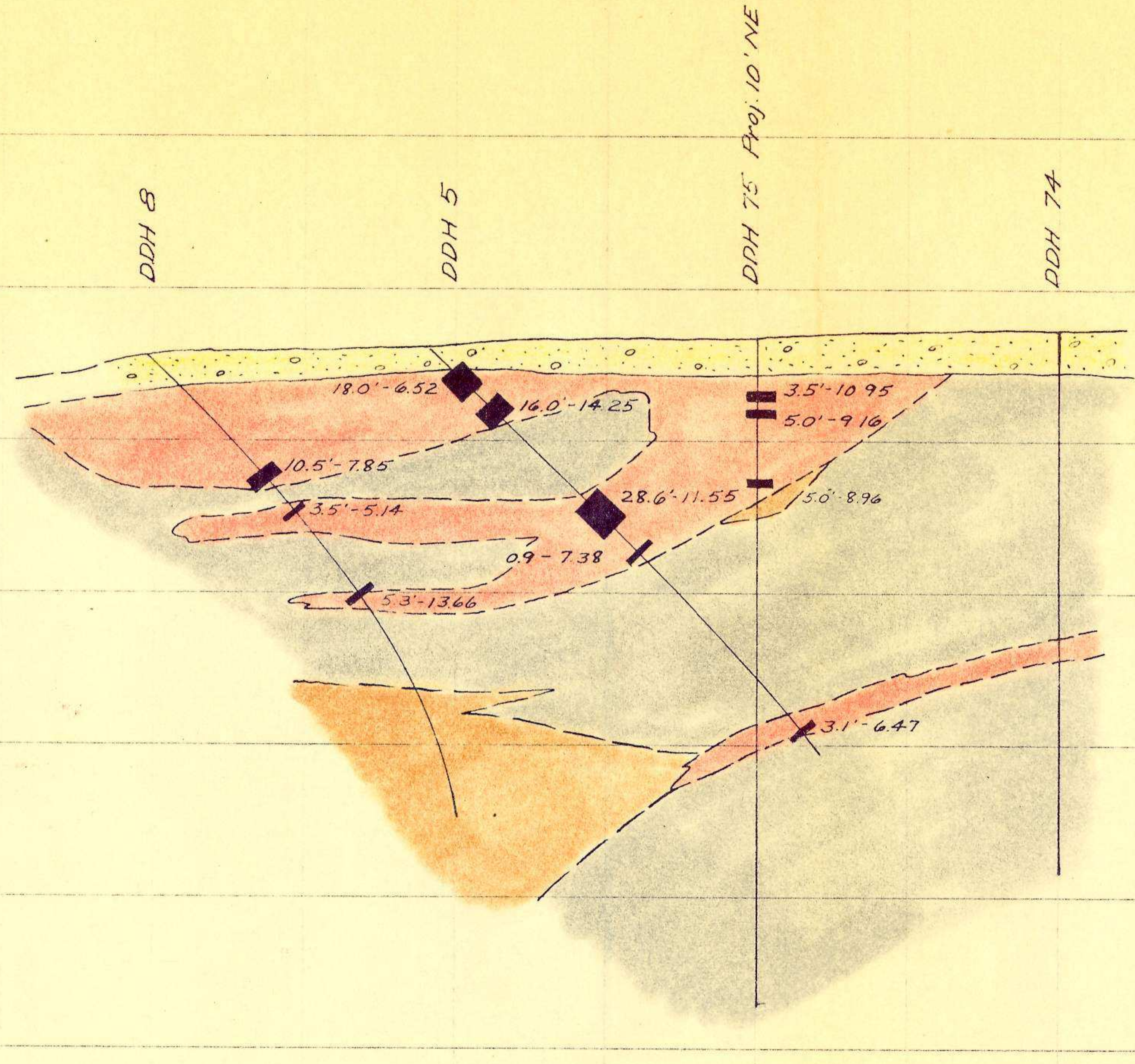
1985 Section # 15 10E



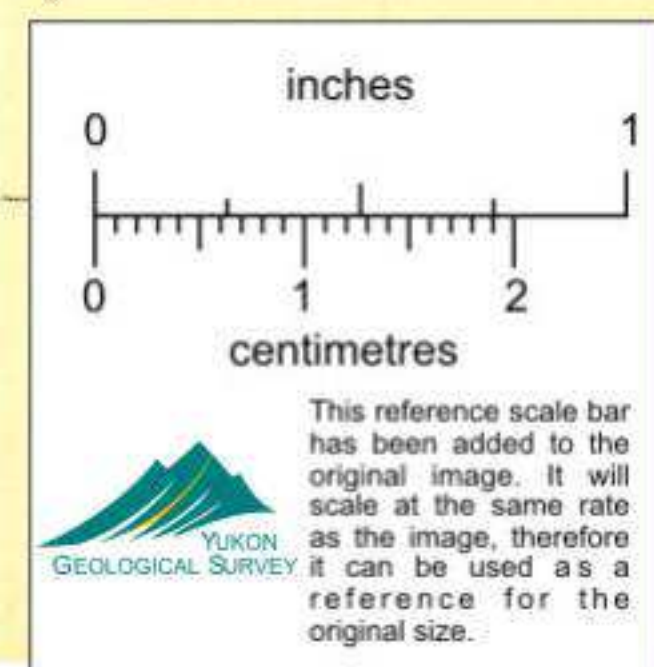
Sec 9 - (I)

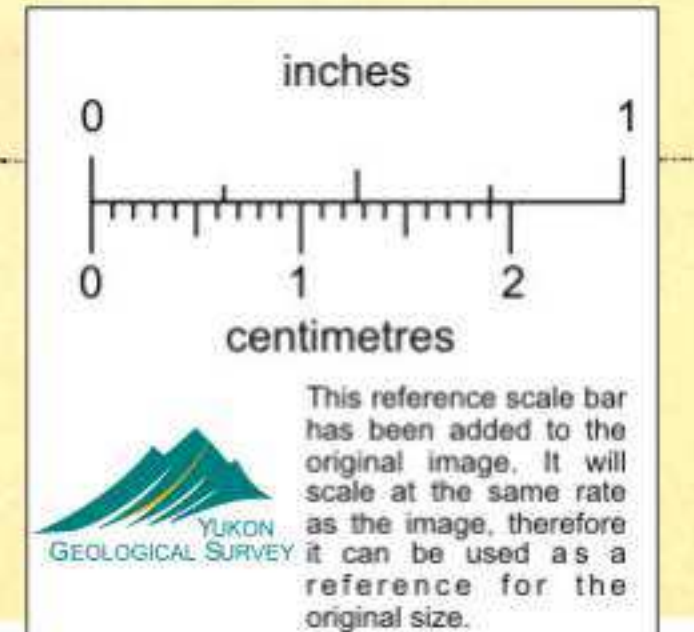
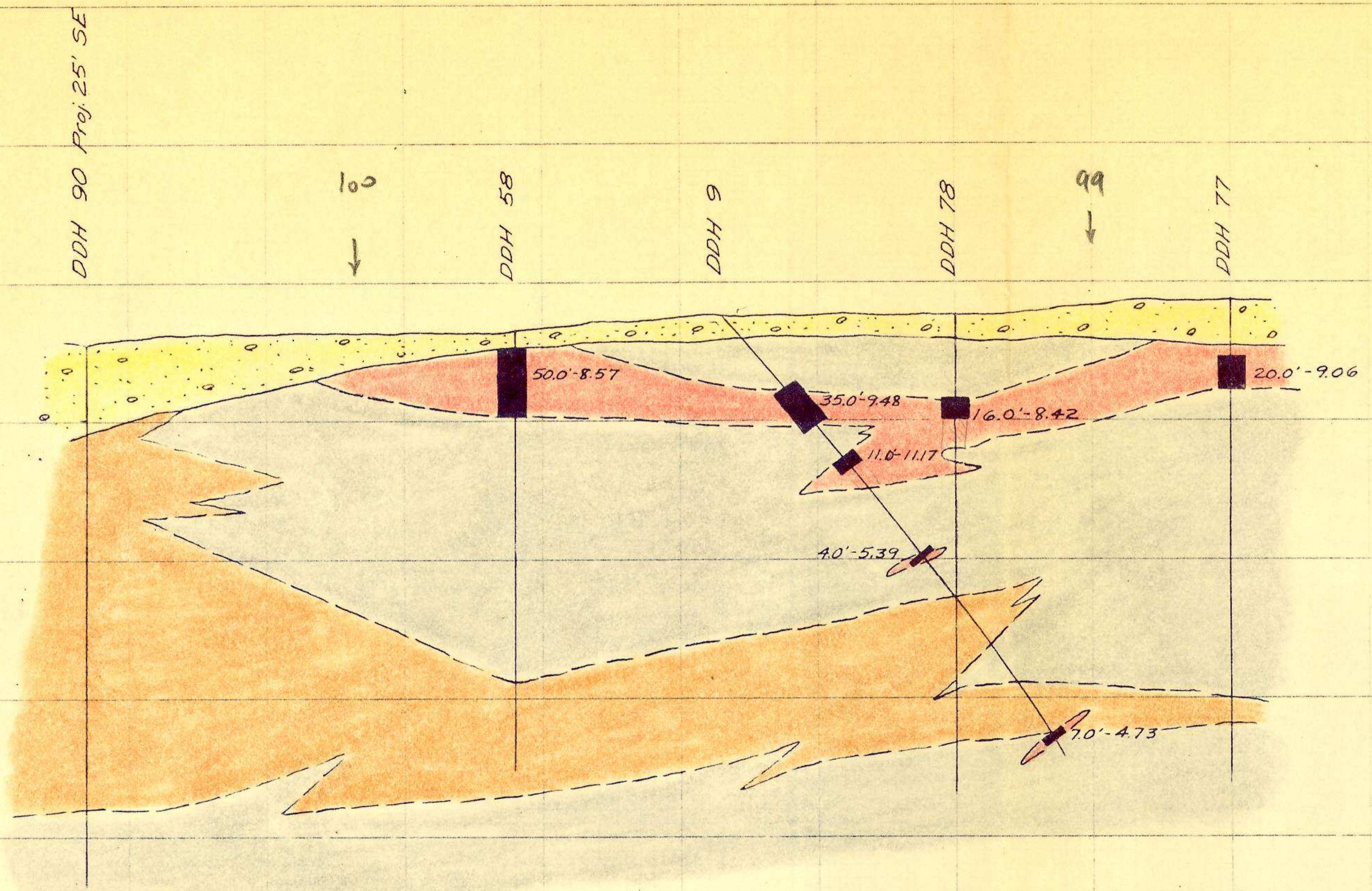






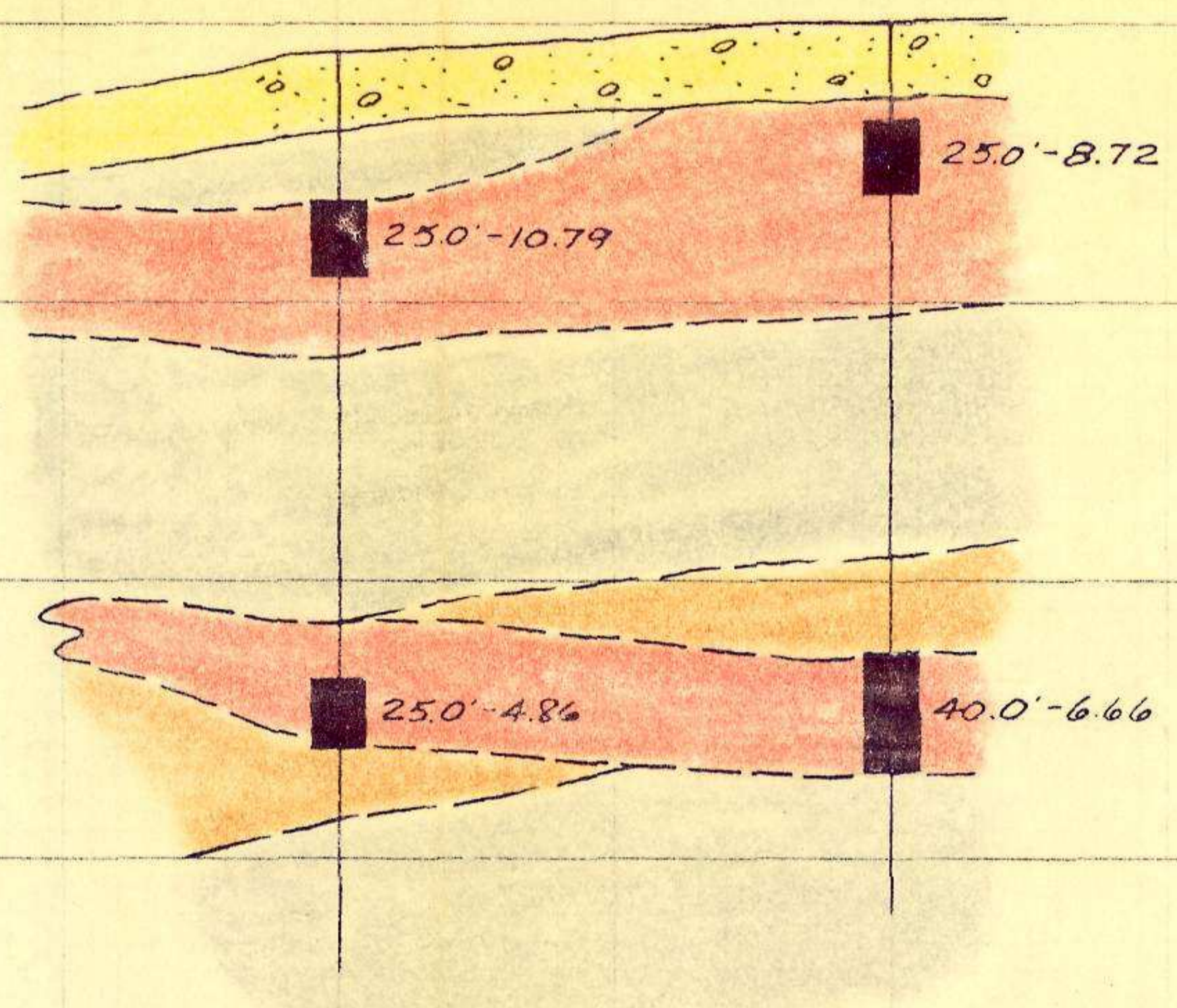
Sec 12 (L)





104 ↓ 105 ↓ 101 ↓ 100 ↓ DDH 84 118 ↓ DDH 55 116 ↓ 108 ↓

4200'

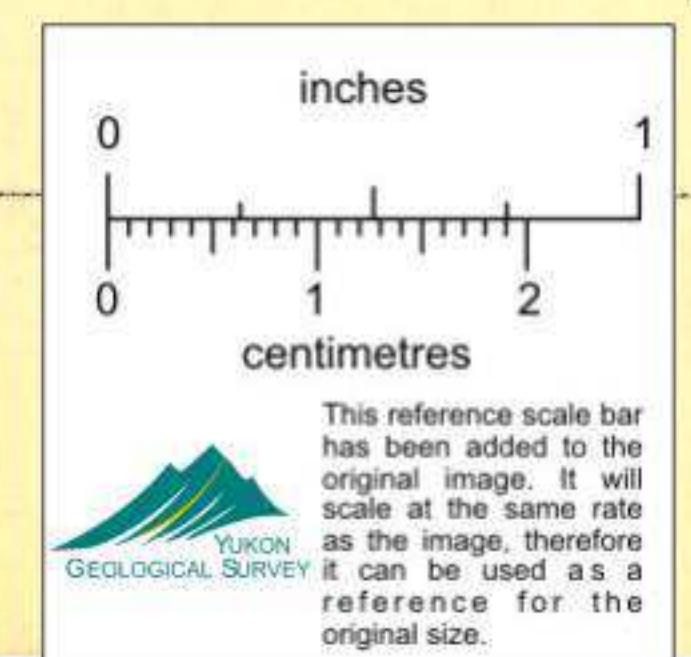


4000'

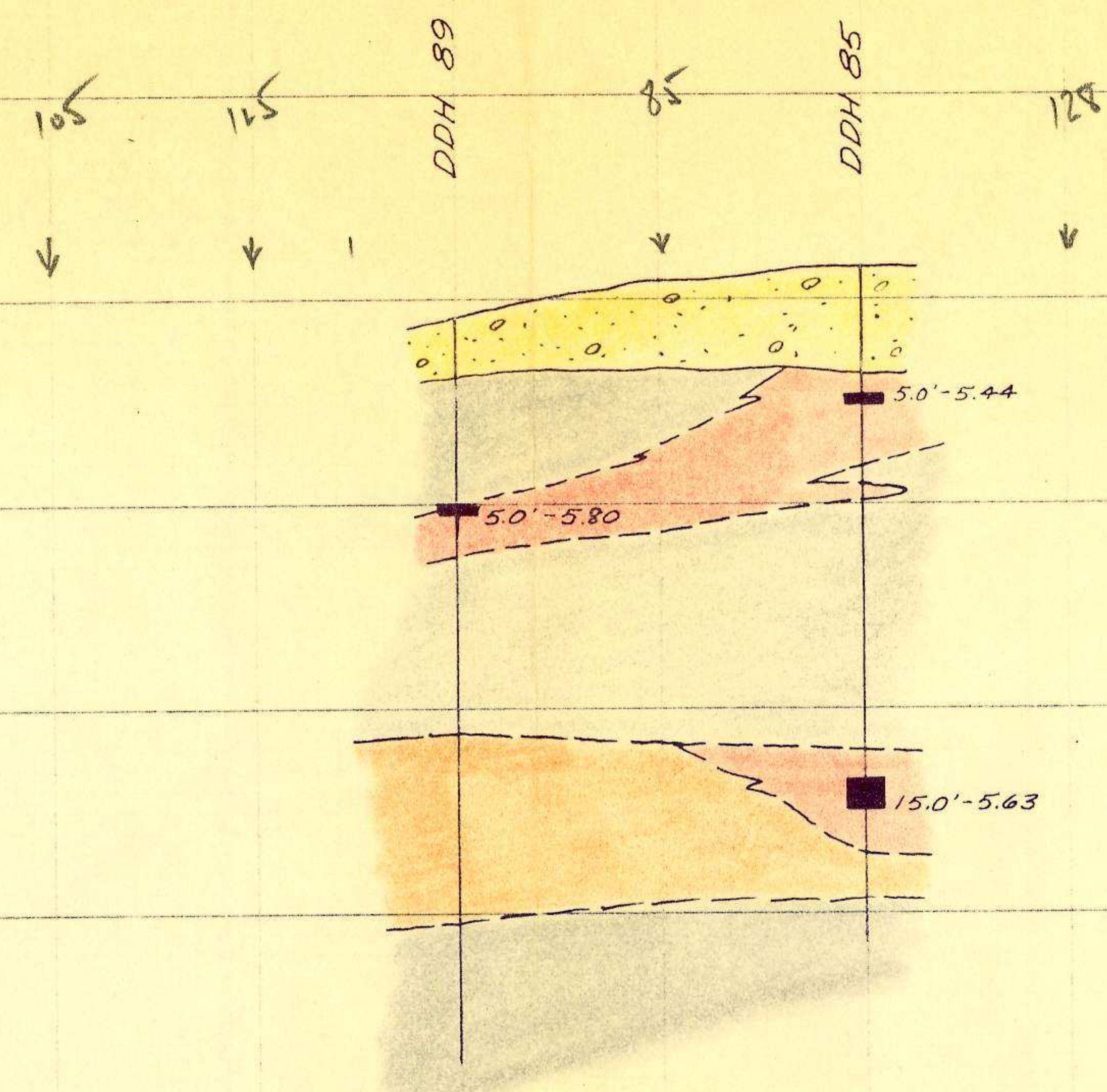
See 15 - (0)

3800'

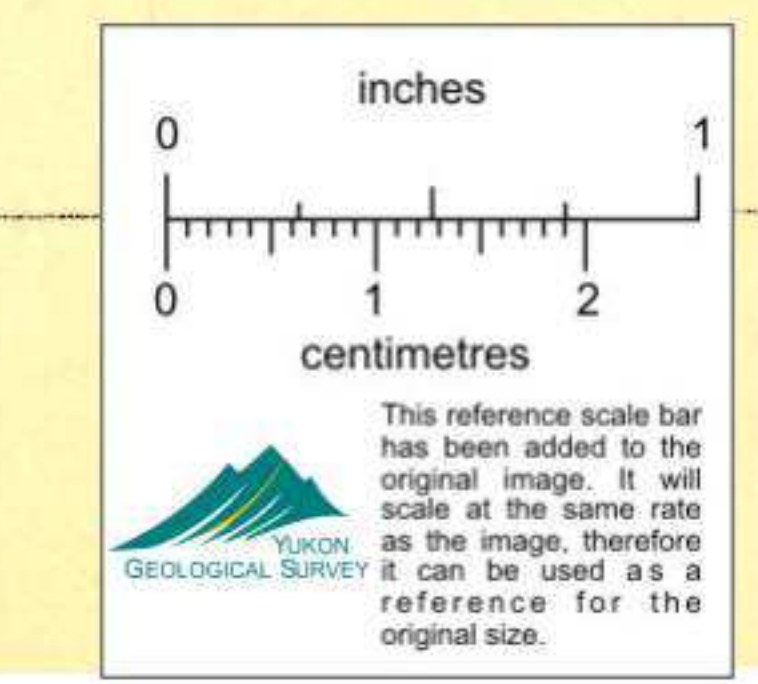
3600'



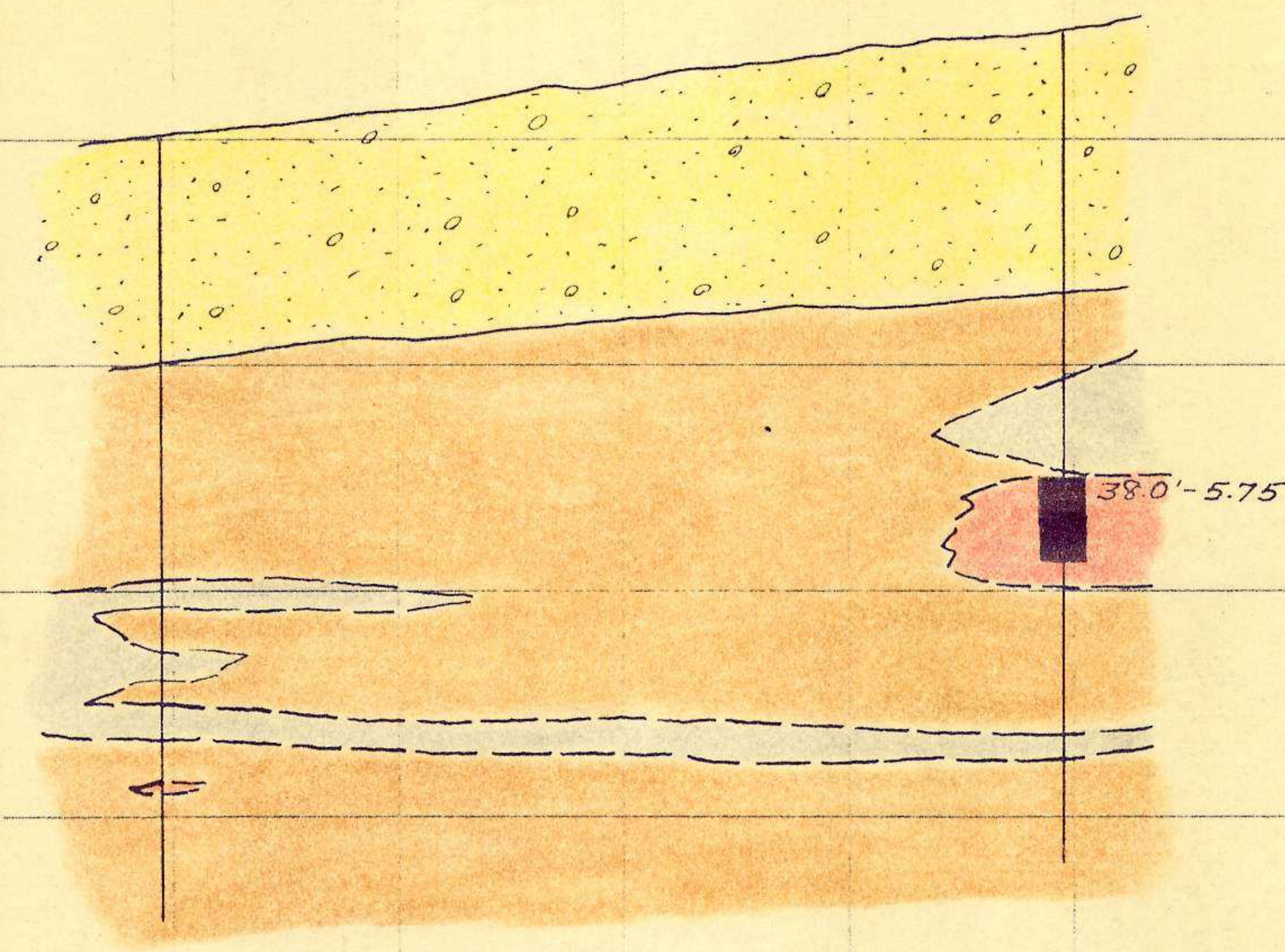
1985 Section # 15 26E



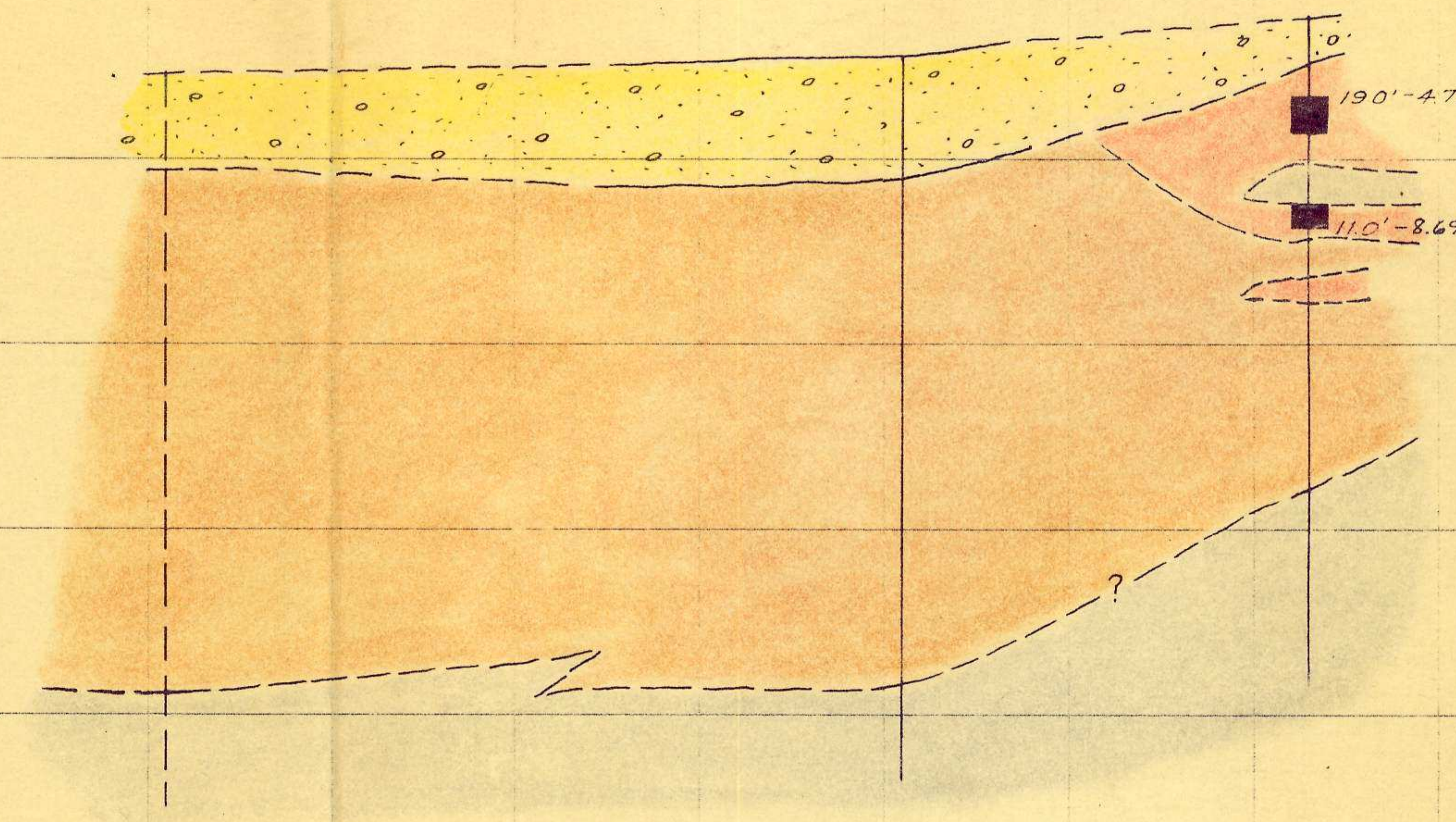
See 17 - Q



DDH 22
DDH 21

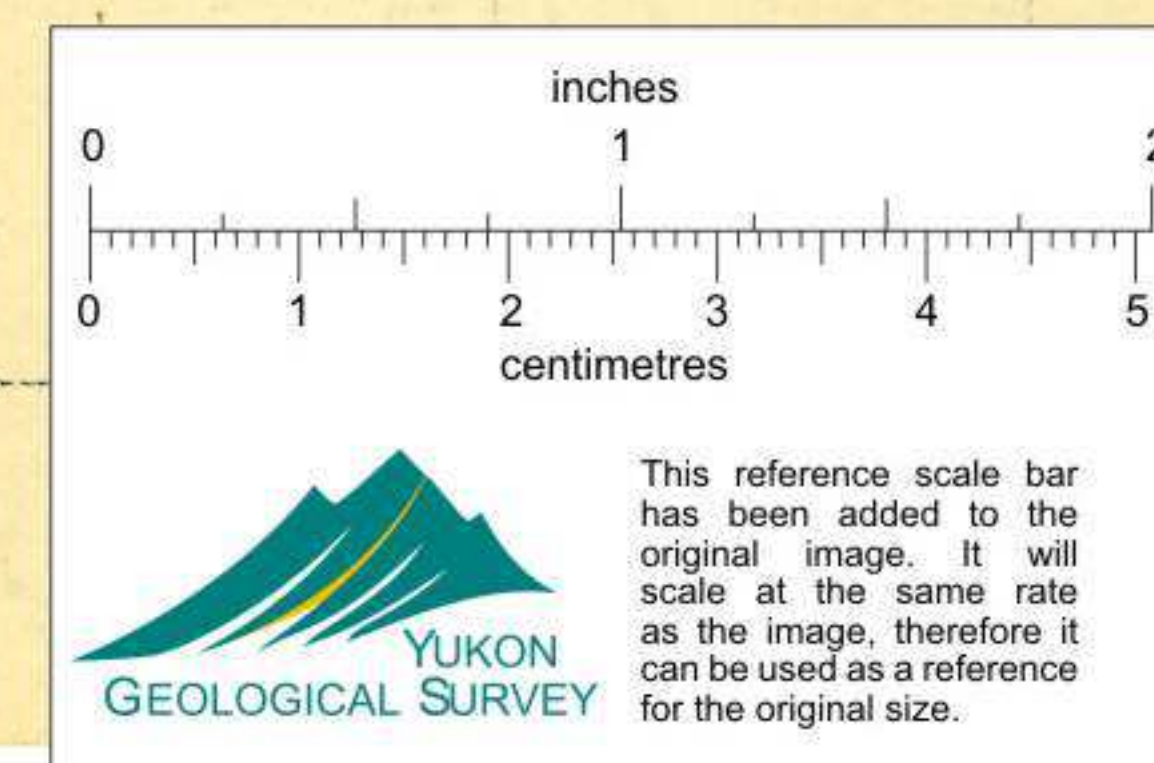


DDH 87 No El.
DDH 90
DDH 54 Proj. 30' SW

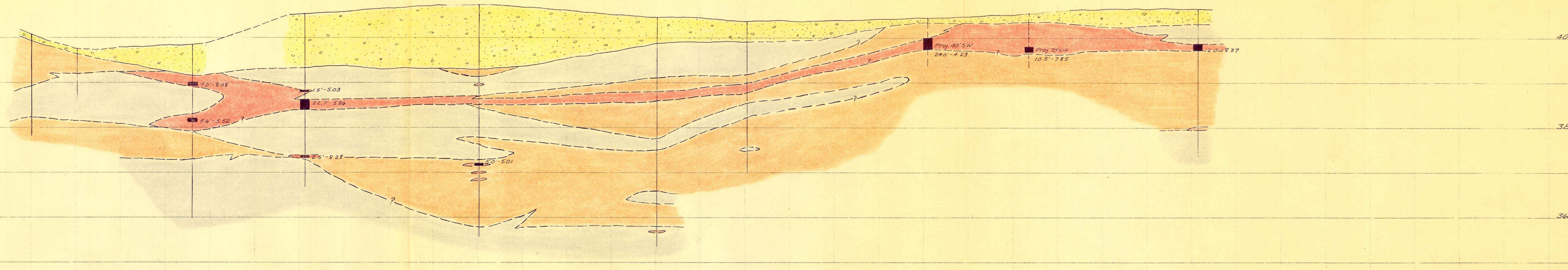


104
k

4200
4000
3800
3600
3400



DDH 2 Proj. 65' SW
 DDH 3 Proj. 30' SW
 DDH 13 Proj. 55' SW
 DDH 48
 DDH 64
 DDH 61
 DDH 42
 DDH 1A Inclined NE
 DDH 8 Inclined NE
 DDH 93

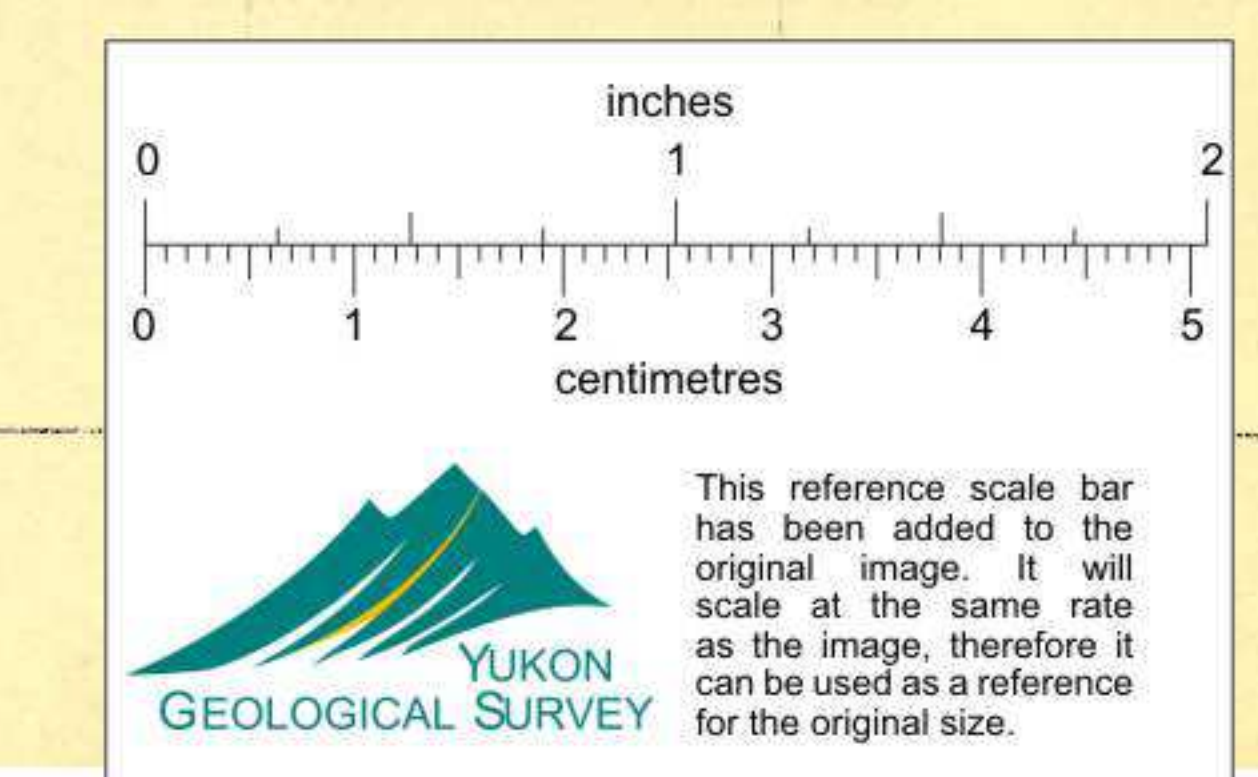
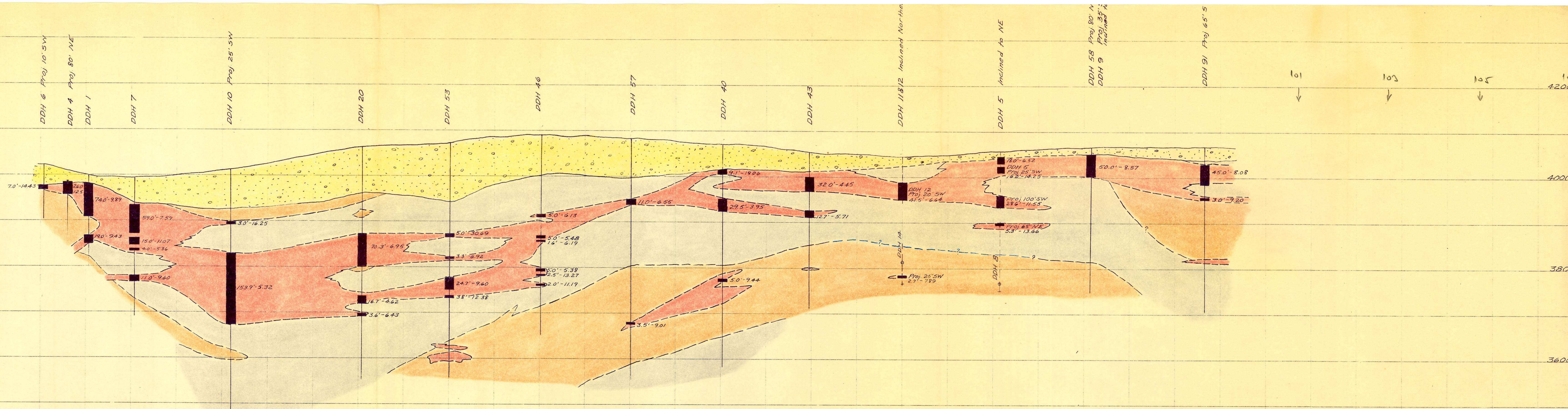


inches
 0 1 2
 centimetres
 0 1 2 3 4 5

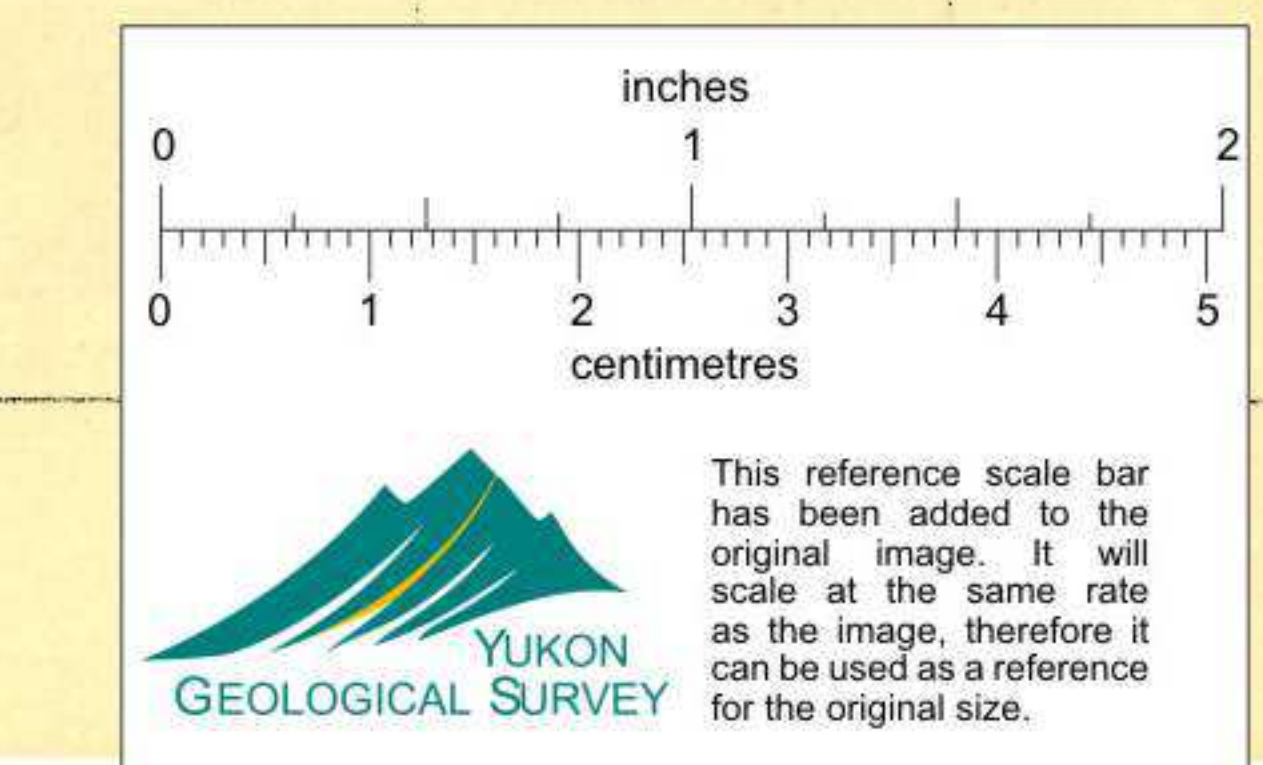
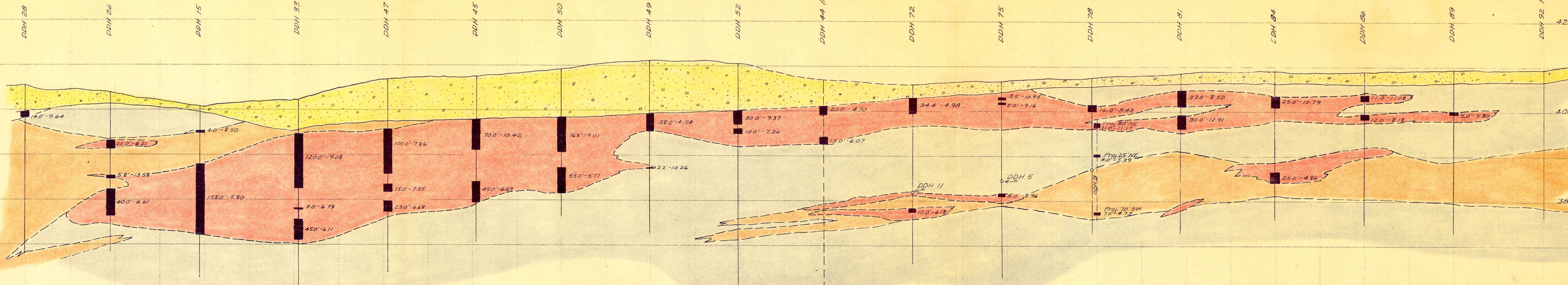
This reference scale bar has been added to the original image. It will scale at the same rate as the image, therefore it can be used as a reference for the original size.

YUKON
 GEOLOGICAL SURVEY

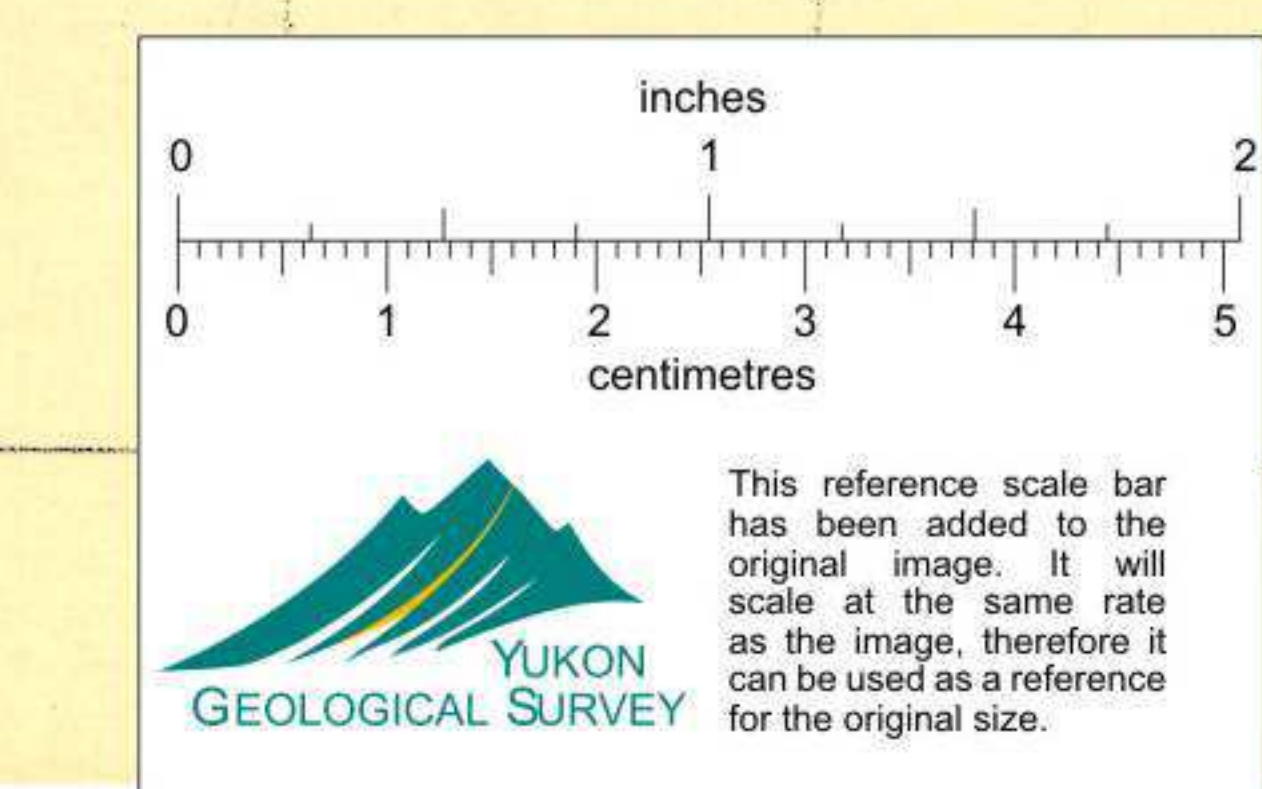
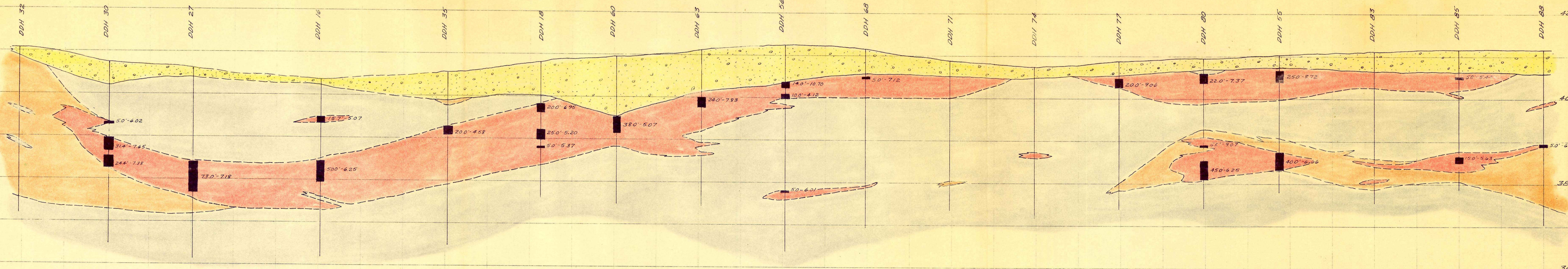
PC
↓

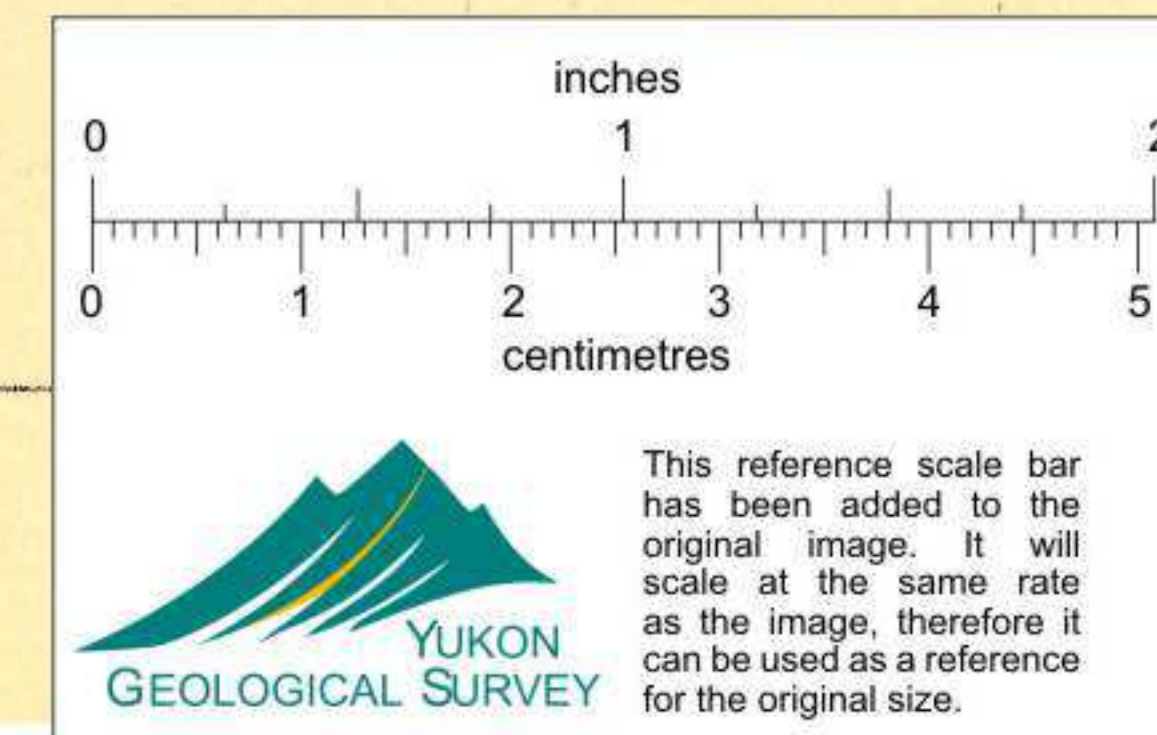
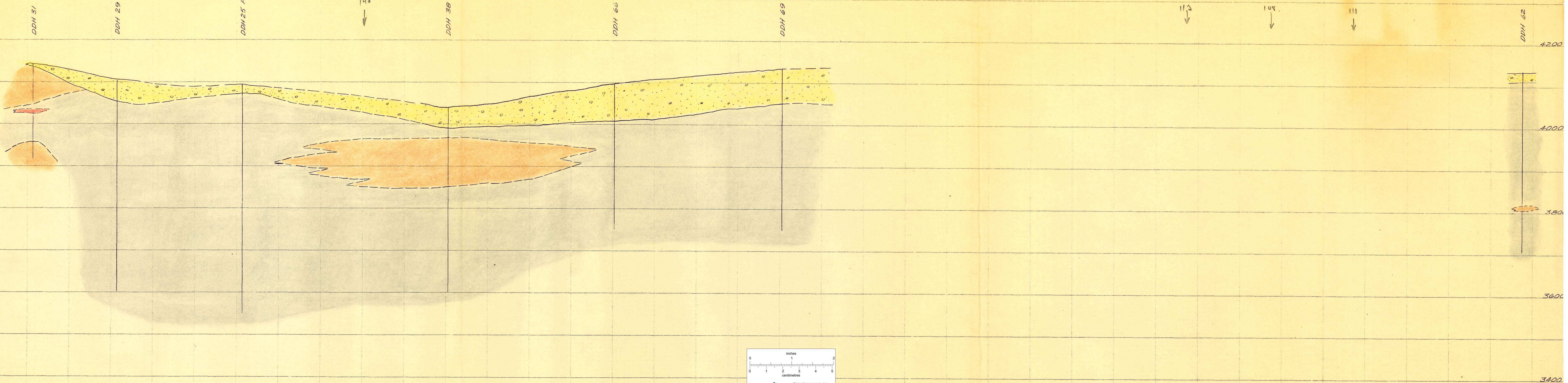


136
↓



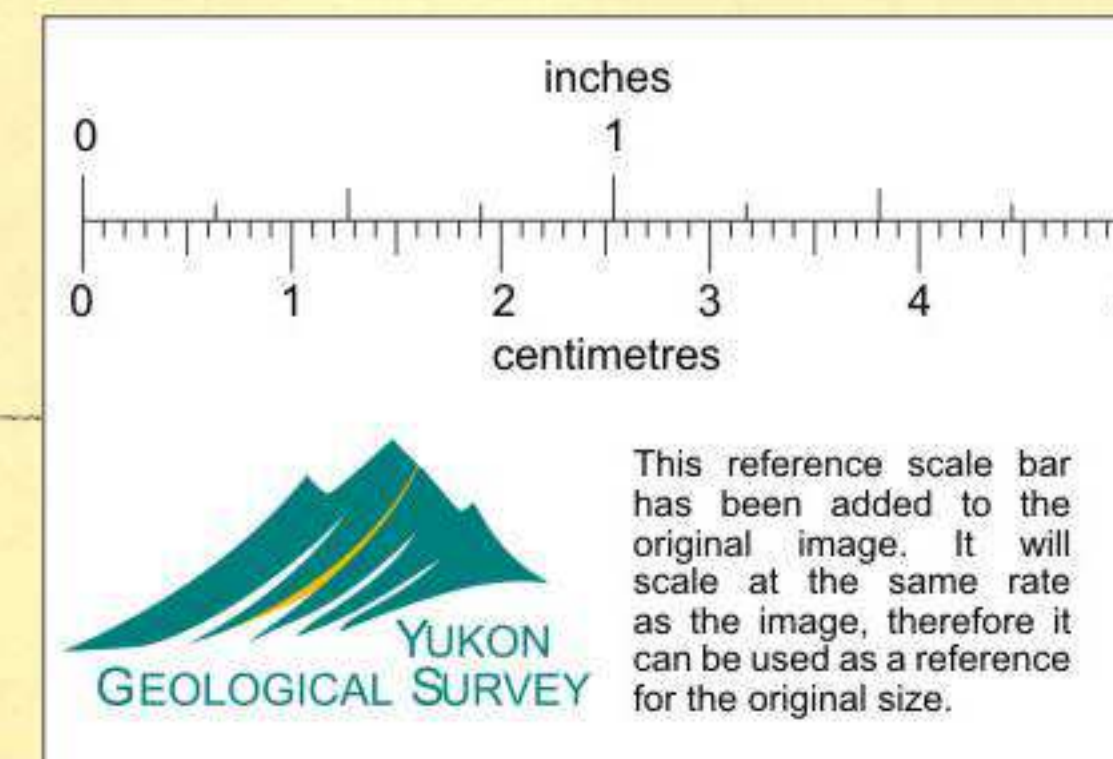
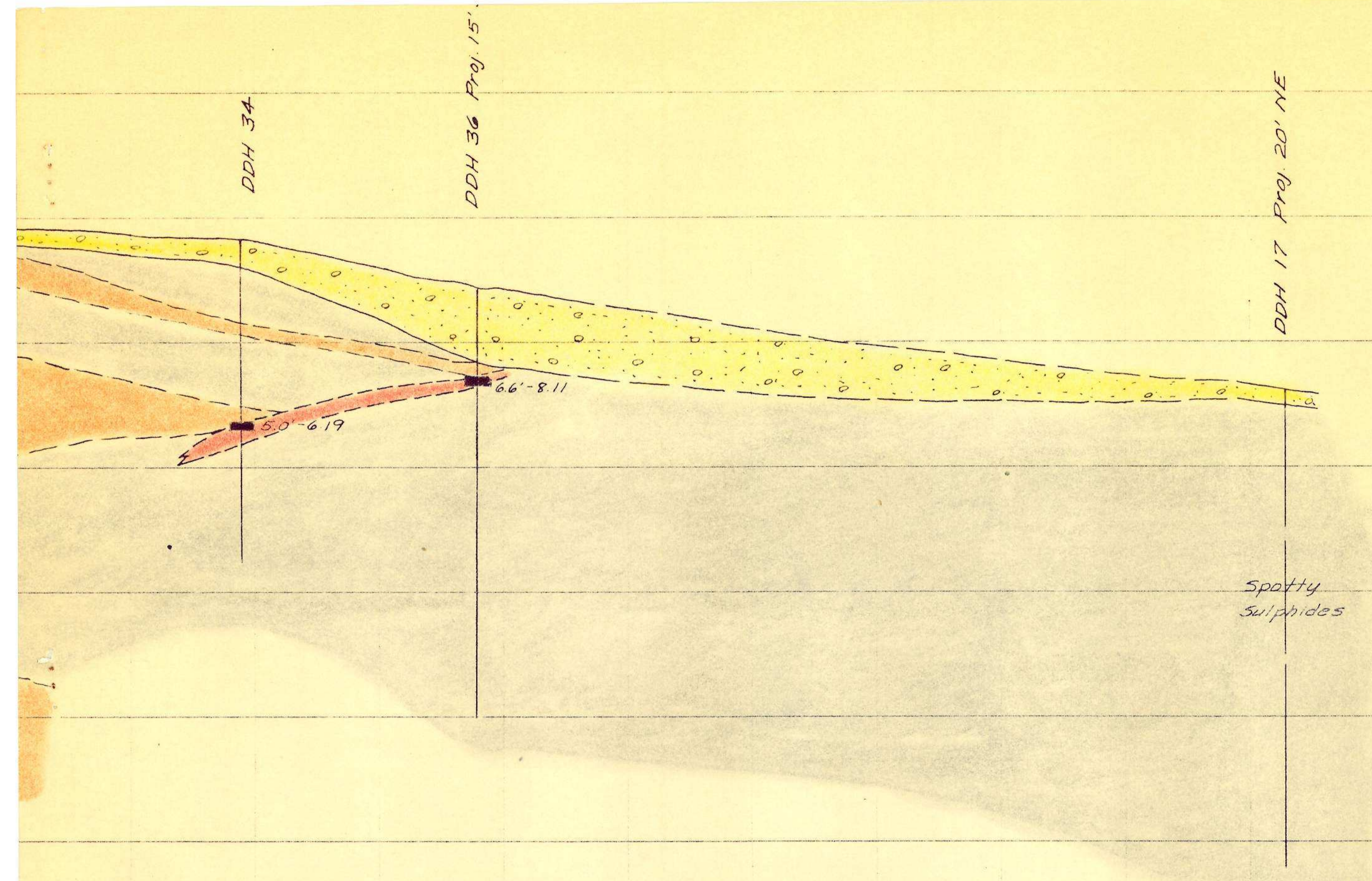
Proj. 50' SW



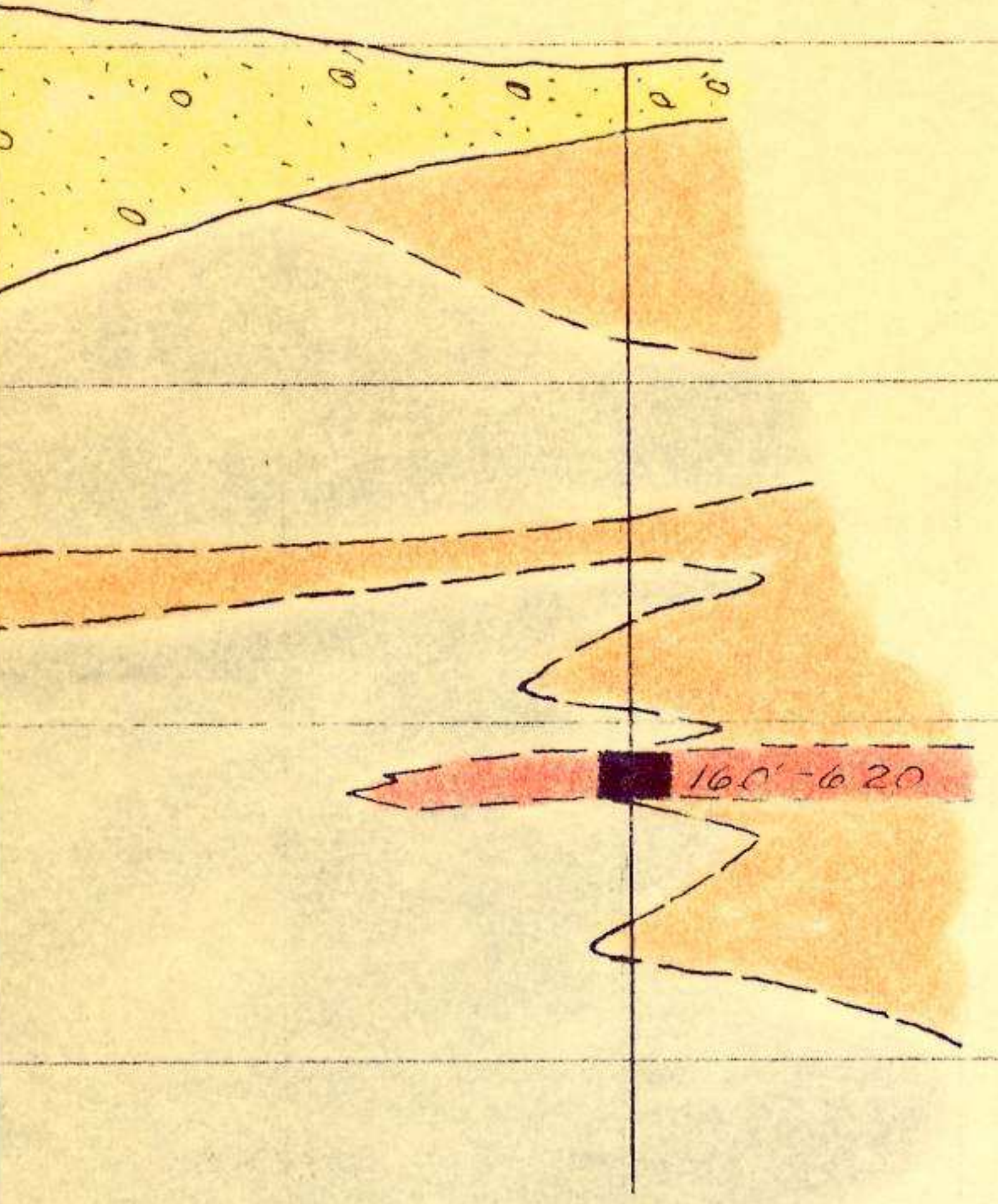


YUKON
GEOLOGICAL SURVEY

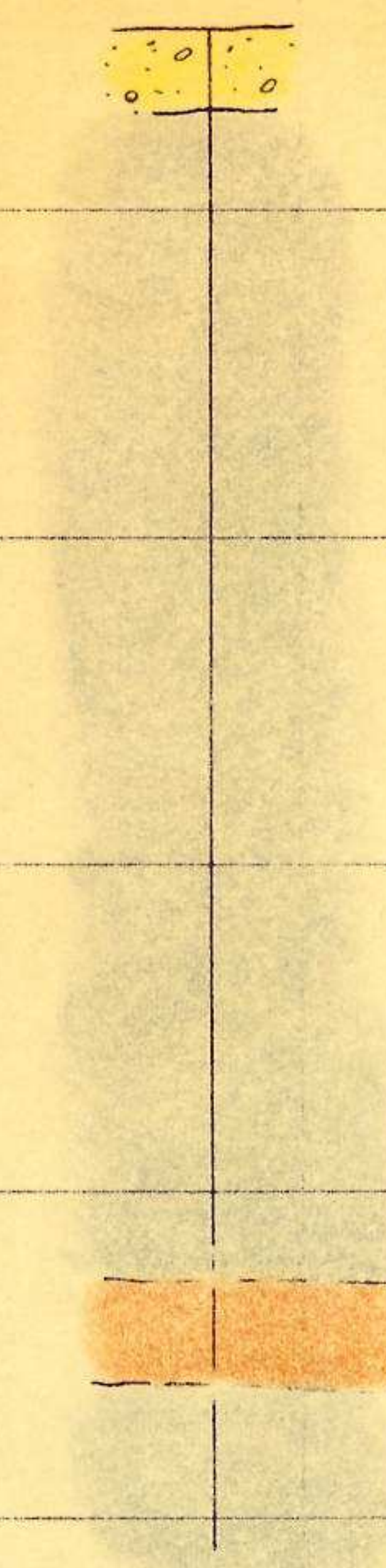
This reference scale bar has been added to the original image. It will scale at the same rate as the image, therefore it can be used as a reference for the original size.



DDH 39



DDH 59 Proj. 90' SW



4200'

4000'

3800'

3600'

