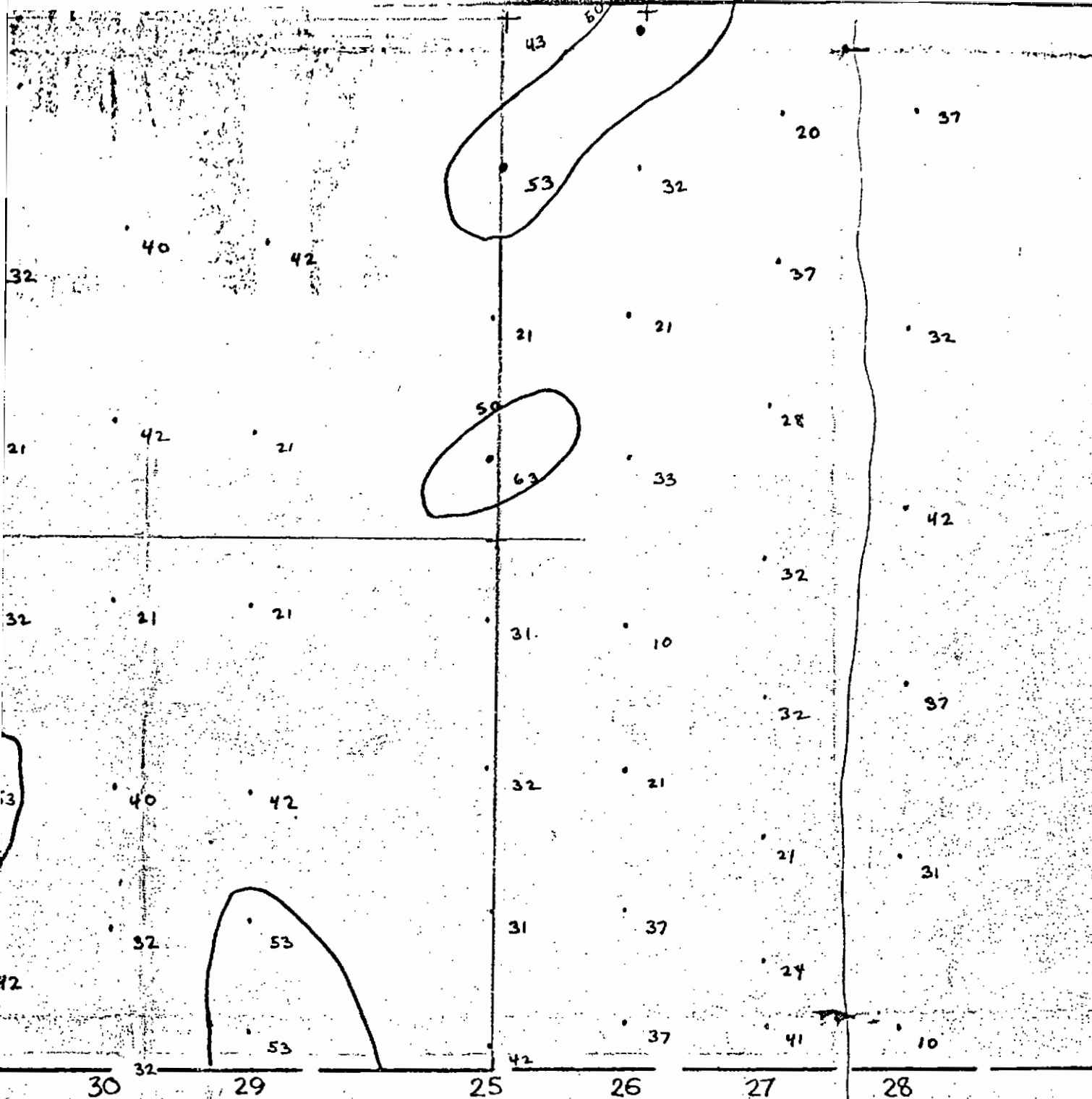
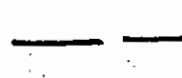


MUNSTER MINES LTD
 Lead Plot
 of the
 AL - Fargo - Kirk Group
 Ross River Area
 Ace R. Parker and Associates
 Sept. 9 1967
 Scale 1" = 400 feet

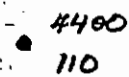
017876



Explanation



Property boundary



Station Number
Value in ppm



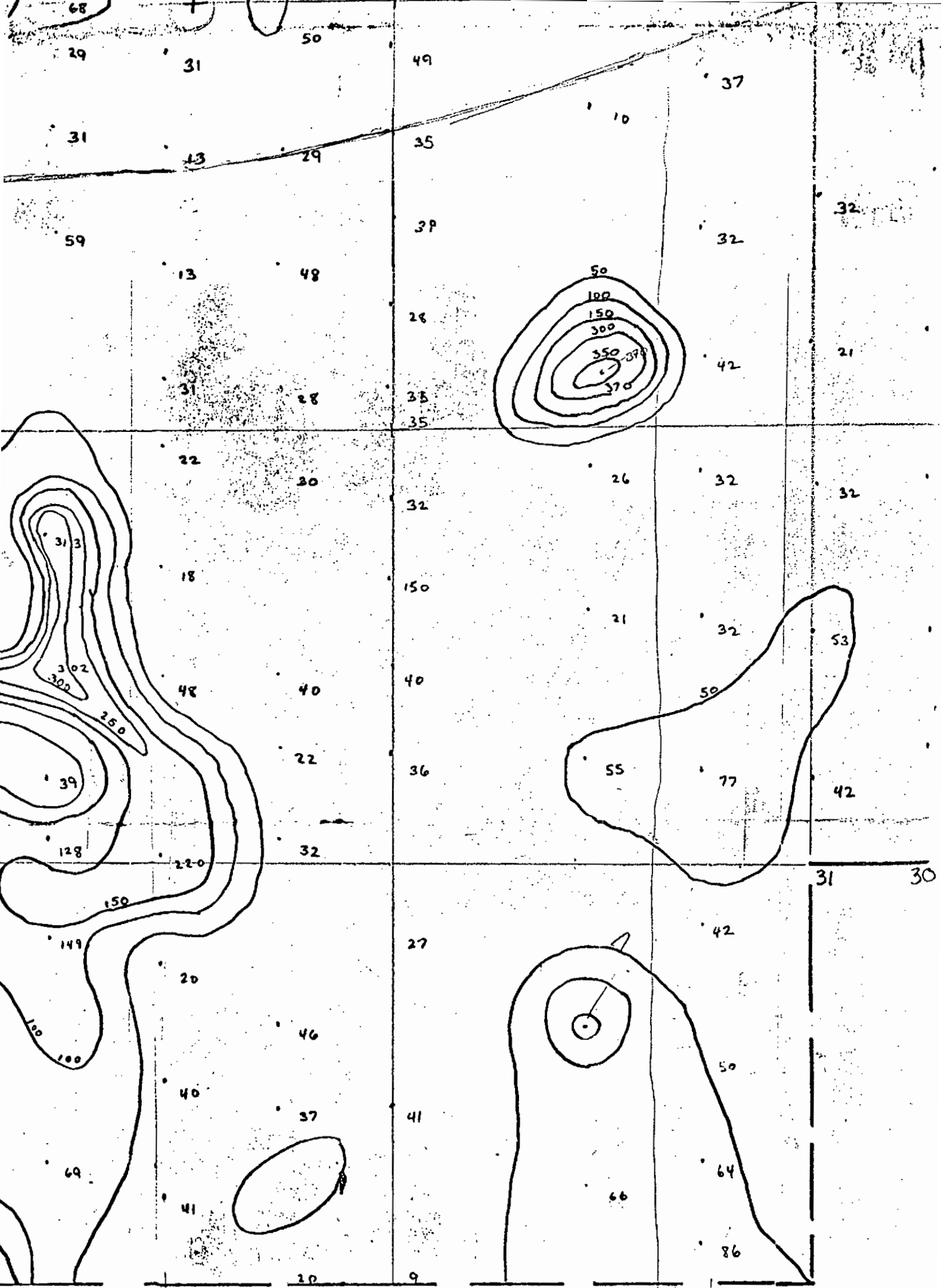
Contour interval 100 ppm



Claim corner

??

50??



5150'

