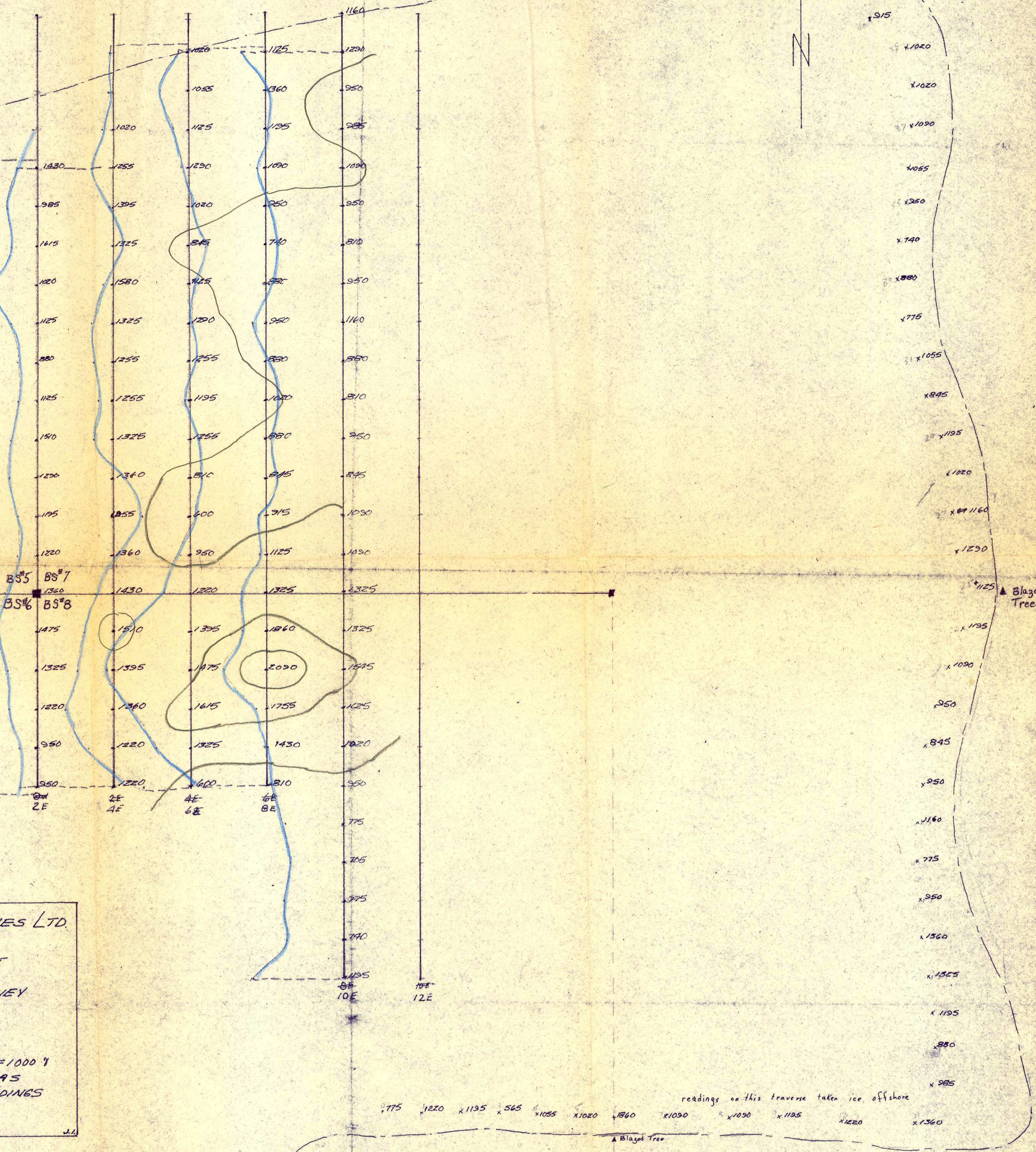
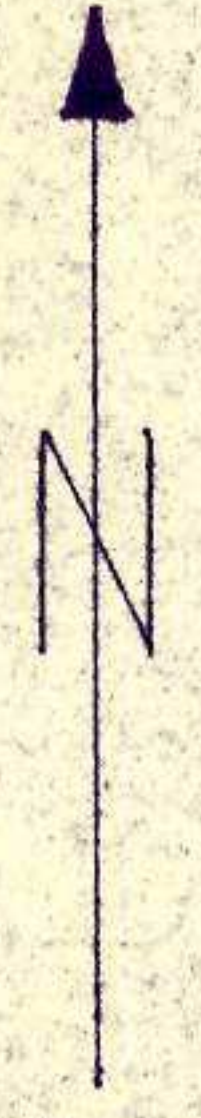


West Swim Lake

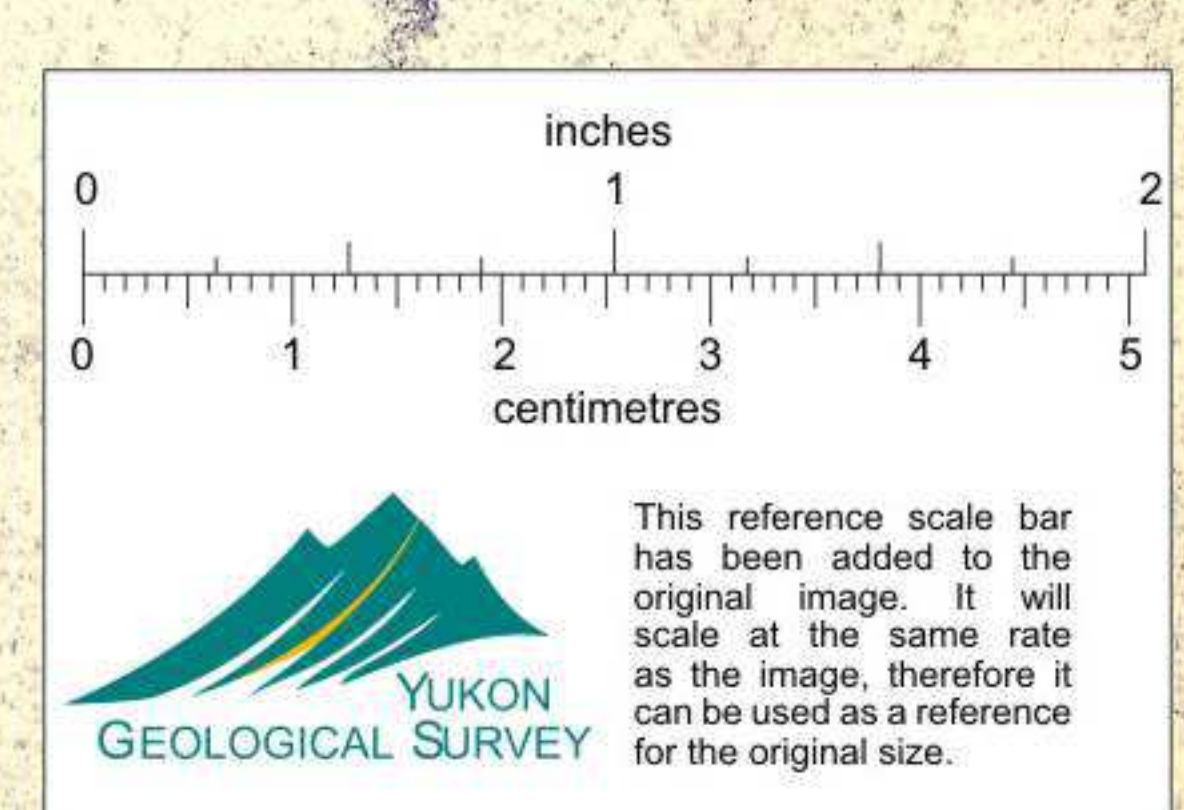
Approximate shore line



B. Crowley

KERR ADDISON MINES LTD.
 B.S. CLAIMS
 SWIM LAKES Y.T.
 MAGNETOMETER SURVEY
 MAY 1964
 J. L. IRVINE
 SCALE: 1" = 200' 1" = 1000'
 READINGS IN GAMMAS
 ADD 8000 γ TO ALL READINGS
 ■ - CLAIM POSTS

018010



readings on this traverse taken ice offshore

Blazed Tree

BS#9
BS#10