



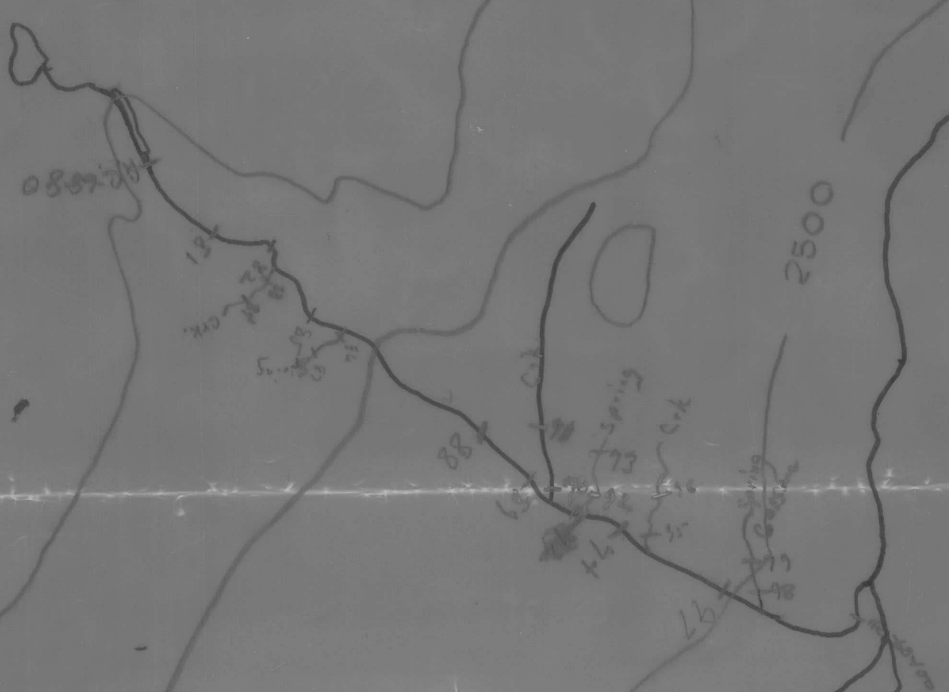
PLOTTED ON GEOCHEM. MAP
AUG. 18/68

A12282-5
105N-5

018053

A. Charlie
Aug. 18/68

N
↑



PLOTTED ON GEOCHEM. MAP
AUGUST 18/68

↓

105N - 5

A. Charlie
Aug 1/68

ATLAS EXPLORATIONS LIMITED

GEOCHEMICAL STREAM SEDIMENT SURVEY DATA

SAMPLER... *A. Charlie*

PHOTO NUMBER.....

DATE... *Aug. 1/68*

Office Use Only		
Map.....		
Date Plotted.....		
Plotter.....		

Sample No.	Quartz P or A	Gossan or Min	Soil		Silt		Stream Width	Remarks	Analytical Results		
			Sand	Silt	Clay	Organic			Cu	Pb	Zn
<i>C-68-80</i>				<i>silt</i>			<i>2 ft</i>				
<i>AC-68-81</i>			<i>sand</i>				<i>2 ft</i>				
<i>AC-68-82</i>				<i>silt</i>			<i>2 ft</i>				
<i>AC-68-83</i>				<i>silt</i>			<i>1/2 ft</i>	<i>stream mouth</i>			
<i>AC-68-84</i>				<i>"</i>			<i>1/2 ft</i>	<i>stream "</i>			
<i>AC-68-85</i>			<i>sand</i>				<i>3 ft</i>				
<i>AC-68-86</i>				<i>silt</i>			<i>1 ft</i>	<i>spring mouth</i>			
<i>AC-68-87</i>				<i>"</i>			<i>1 ft</i>	<i>spring "</i>			
<i>AC-68-88</i>				<i>silt</i>			<i>3 ft</i>				
<i>AC-68-89</i>				<i>silt</i>			<i>2 ft</i>				
<i>AC-68-90</i>				<i>silt</i>			<i>2 ft</i>	<i>stream mouth</i>			
<i>AC-68-91</i>				<i>"</i>			<i>1 ft</i>	<i>stream mouth</i>			
<i>AC-68-92</i>				<i>silt</i>			<i>1/2 ft</i>	<i>spring "</i>			
<i>AC-68-93</i>				<i>"</i>			<i>1/2 ft</i>	<i>spring "</i>			
<i>AC-68-94</i>				<i>silt</i>			<i>3 ft</i>				
<i>AC-68-95</i>				<i>silt</i>			<i>1/2 ft</i>	<i>ark mouth</i>			



A. Charles

30

31

32

33

34

37

36

38

38

39

40

40

41

42

43

44

45

3500

PLOTTED ON GEOCHEM. MAP
AUGUST 17/68

⊕

105N-5

A. Charles
July 27/68

ATLAS EXPLORATIONS LIMITED

GEOCHEMICAL STREAM SEDIMENT SURVEY DATA

SAMPLER..... *A. Charlie*

PHOTO NUMBER.....

DATE..... *July 24/68*

<u>Office Use Only</u>		
Map.....		
Date Plotted.....		
Plotter.....		

Sample No.	Quartz P or A	Gossan or Min	Soil		Silt		Stream Width	Remarks	Analytical Results		
			Sand	Silt	Clay	Organic			Cu	Pb	Zn
<i>68-29</i>			<i>sand</i>				<i>12 ft</i>				
<i>A.C. 68-30</i>			<i>sand</i>				<i>10 ft</i>				
<i>A.C. 68-31</i>				<i>silt</i>			<i>10 ft</i>				
<i>A.C. 68-32</i>			<i>sand</i>				<i>11 ft</i>				
<i>A.C. 68-33</i>				<i>silt</i>			<i>10 ft</i>				
<i>A.C. 68-34</i>				<i>silt</i>			<i>6 ft</i>				
<i>A.C. 68-35</i>				<i>silt</i>			<i>6 ft</i>				
<i>A.C. 68-36</i>			<i>sand</i>	<i>silt</i>			<i>3 ft</i>				
<i>A.C. 68-37</i>				<i>silt</i>			<i>2 ft</i>				
<i>A.C. 68-38</i>			<i>sand</i>	<i>silt</i>			<i>7 ft</i>				
<i>A.C. 68-39</i>			<i>sand</i>				<i>8 ft</i>				
<i>A.C. 68-40</i>				<i>silt</i>			<i>8 ft</i>				
<i>A.C. 68-41</i>				<i>silt</i>				<i>from spring</i>			
<i>A.C. 68-42</i>				<i>silt</i>				<i>" "</i>			
<i>A.C. 68-43</i>			<i>sand</i>				<i>10 ft</i>				
<i>A.C. 68-44</i>			<i>sand</i>				<i>6 ft</i>	<i>canyon</i>			



A 12819 - 180

Kyösti Heinänen

23. 7. 1968

Samples 284 - 285

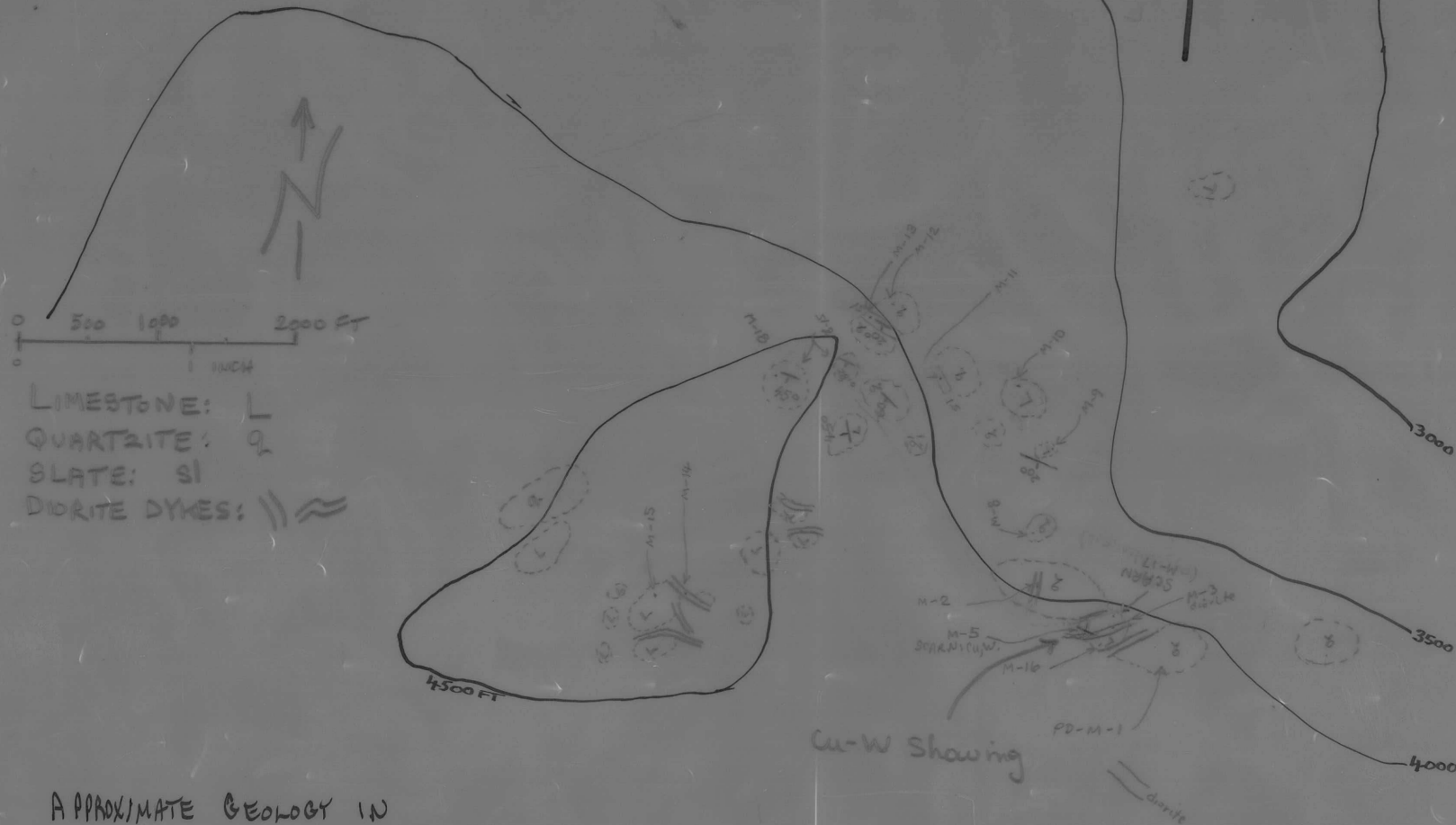
Geochem. samples KH-68-134 - 137

GEOCHEM.

PLOTTED ON GEOLOGY MAP
AUGUST 1-1968

105-N-5

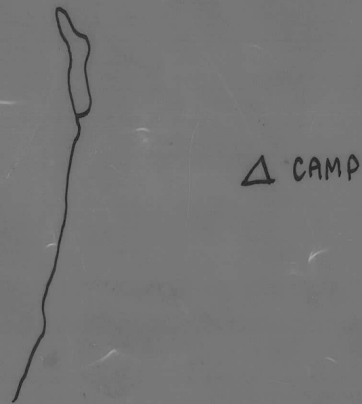
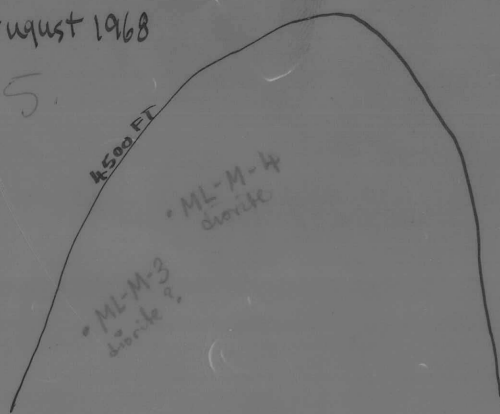
(20X ENLARGEMENT OF LANSING TOPO SHEET)



APPROXIMATE GEOLOGY IN
VICINITY OF SCHEELITE-COPPER
SHOWING ON "SHEEP PLATEAU"
(63°18'N x 133°56'W)

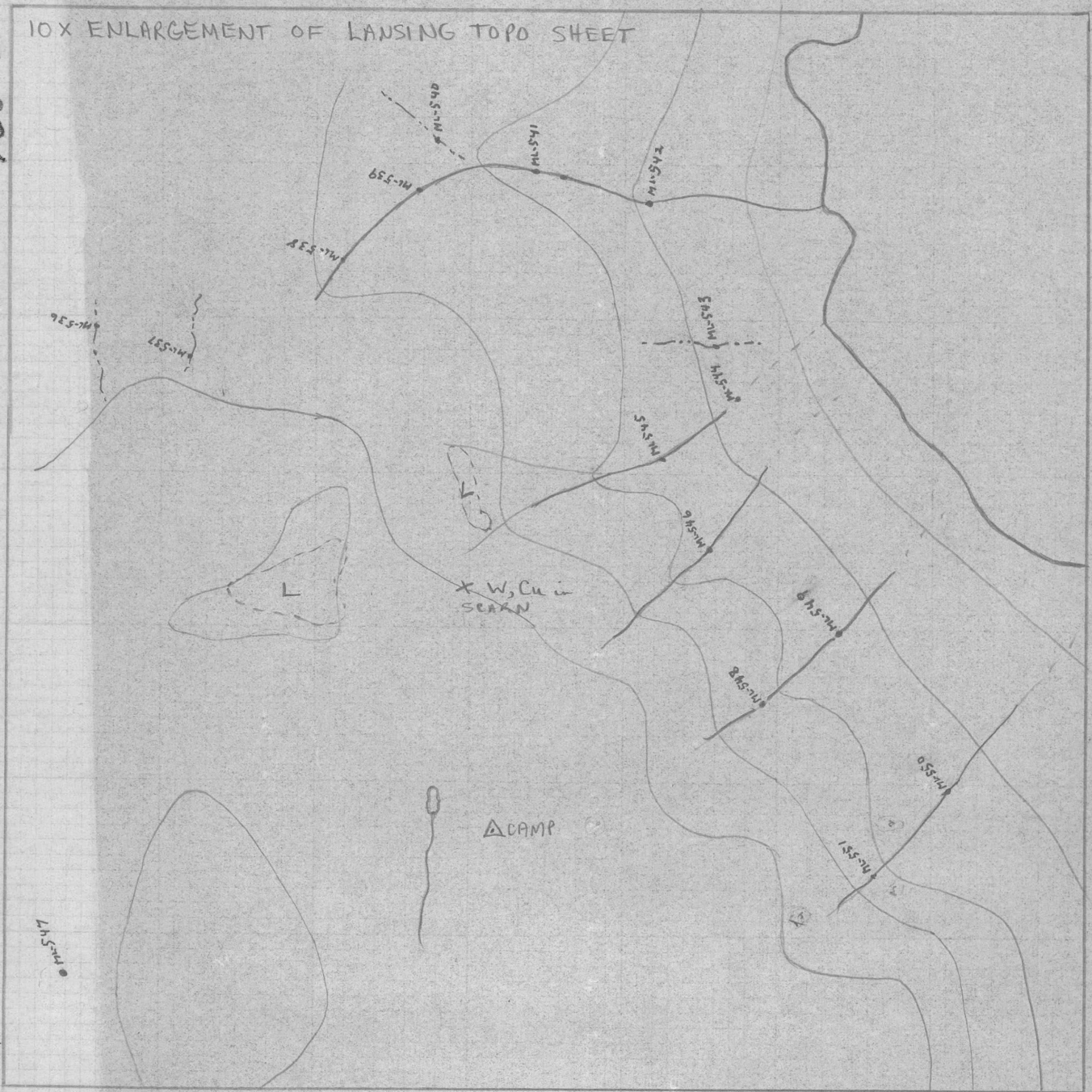
P. DEAN 3 August 1968

W5-N-5.



105-N-3

10X ENLARGEMENT OF LANSING TOPO SHEET



GEOCHEM. PLOTTED -
SEPT. 11 - 68.

GEOCHEM COVERAGE: "SHEEP PLATEAU"

ATLAS EXPLORATIONS LIMITED

GEOCHEMICAL STREAM SEDIMENT SURVEY DATA

SAMPLER. MACIK...L.A.DU.E.....

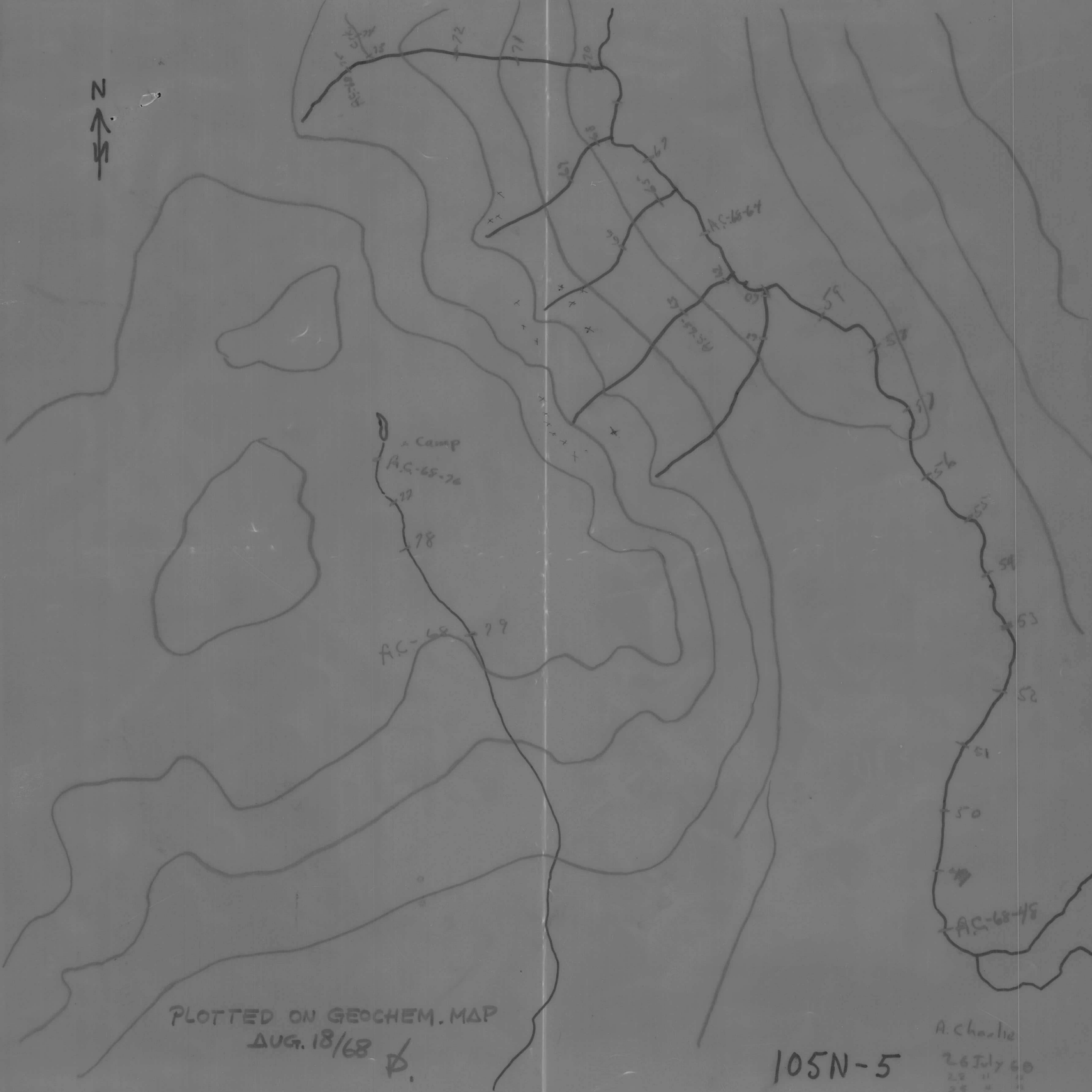
PHOTO NUMBER.....

DATE. 3...AUG...1968.....

<u>Office Use Only</u>		
Map.....		
Date Plotted.....		
Plotter.....		

Sample No.	Quartz P or A	Gossan or Min	Soil		Silt		Stream Width	Remarks	Analytical Results		
			Sand	Silt	Clay	Organic			Cu	Pb	Zn
168-536				✓			1				
537				✓			1				
538				✓			1				
539				✓			2				
540				✓			1				
541				✓			3				
542				✓			4				
543				✓			1				
544				✓			2				
545				✓			2				
546				✓			1				
547				✓			1				
348				✓			1				
549				✓			1				
550				✓			2				
551				✓			1				

N
↑
S



PLOTTED ON GEOCHEM. MAP
AUG. 18/68 ϕ .

105N-5

A. Charlie
26 July 60
28
28

ATLAS EXPLORATIONS LIMITED

GEOCHEMICAL STREAM SEDIMENT SURVEY DATA

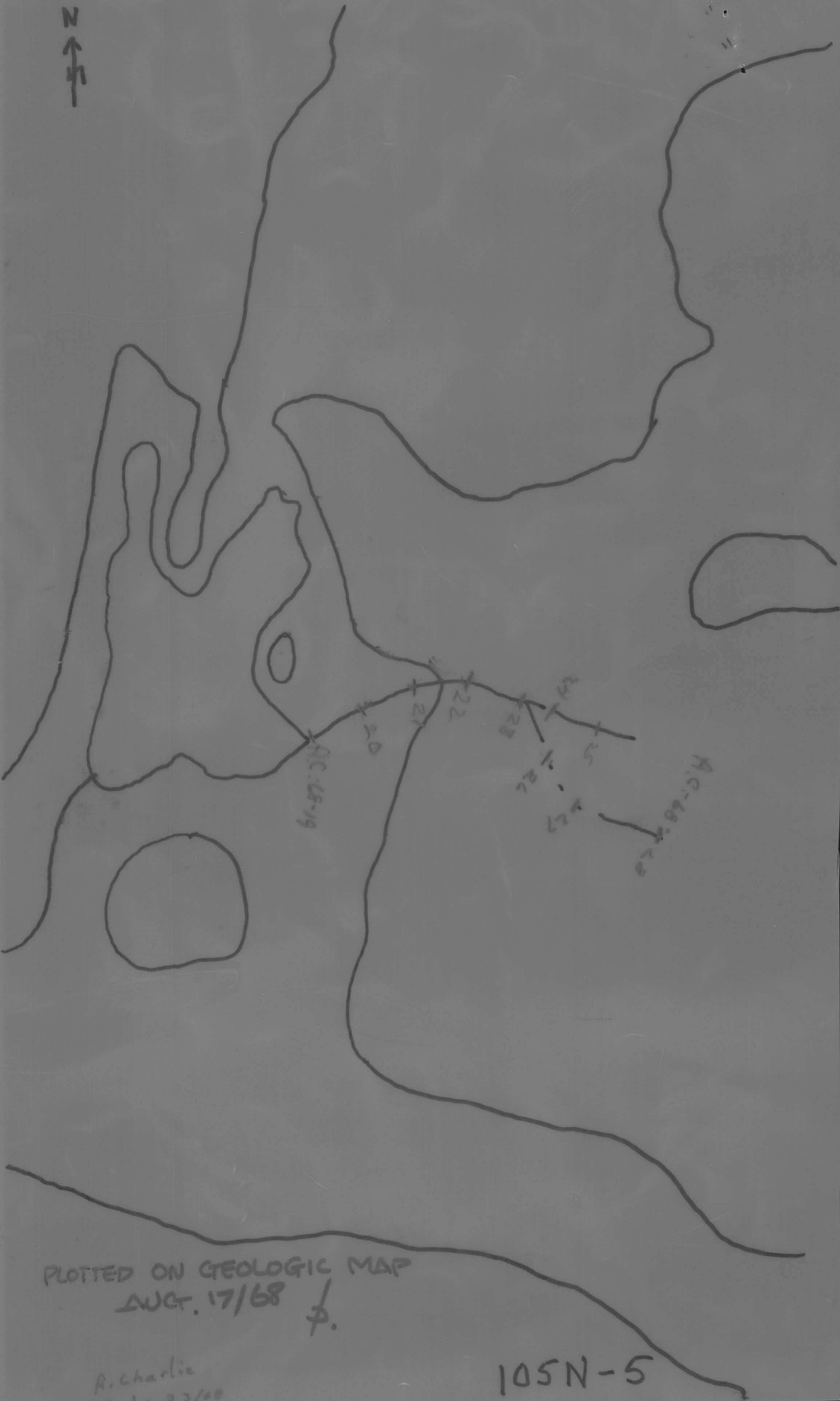
SAMPLER *A. Charlie*

PHOTO NUMBER *A. 12282-91*

DATE *July 26/68*

Office Use Only		
Map.....		
Date Plotted.....		
Plotter.....		

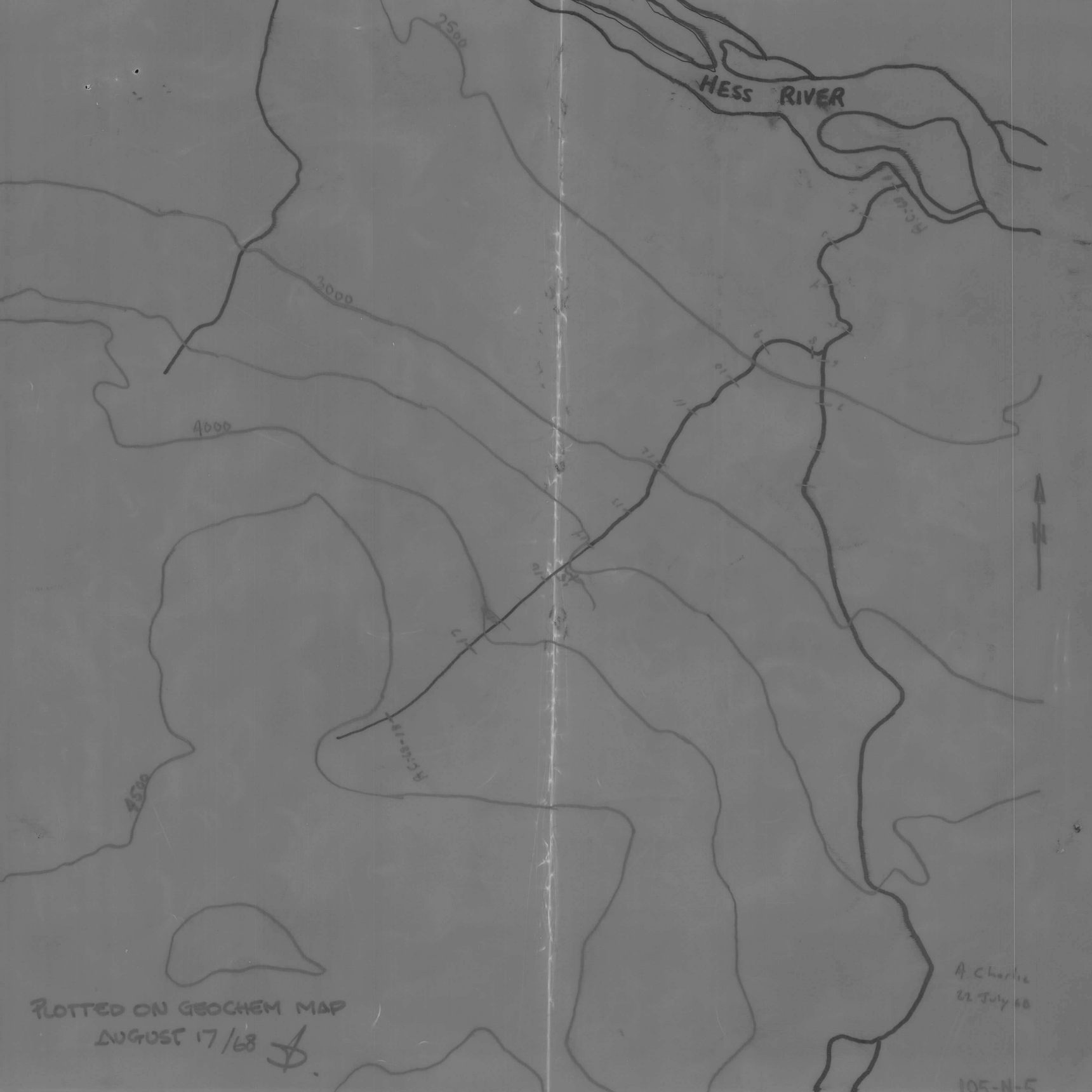
Sample No.	Quartz P or A	Gossan or Min	Soil		Silt		Stream Width	Remarks	Analytical Results		
			Sand	Silt	Clay	Organic			Cu	Pb	Zn
<i>AC-68-48</i>			<i>sand</i>				<i>17 ft</i>				
<i>AC-68-49</i>			<i>sand</i>				<i>18 ft</i>				
<i>AC-68-50</i>				<i>silt</i>			<i>17 ft</i>				
<i>AC-68-51</i>				<i>silt</i>			<i>20 ft</i>				
<i>AC-68-52</i>				<i>silt</i>			<i>16 ft</i>				
<i>AC-68-53</i>				<i>silt</i>			<i>15 ft</i>				
<i>AC-68-54</i>				<i>silt</i>			<i>17 ft</i>				
<i>AC-68-55</i>				<i>silt</i>			<i>20 ft</i>				
<i>AC-68-56</i>				<i>silt</i>			<i>17 ft</i>				
<i>AC-68-57</i>			<i>sand</i>	<i>silt</i>			<i>18 ft</i>				
<i>AC-68-58</i>				<i>silt</i>			<i>18 ft</i>				
<i>AC-68-59</i>				<i>silt</i>			<i>15 ft</i>				
<i>AC-68-60</i>				<i>silt</i>				<i>dry creek bed</i>			
<i>AC-68-61</i>				<i>silt</i>				<i>dry creek bed</i>			
<i>AC-68-62</i>				<i>silt</i>			<i>1 ft</i>	<i>stream</i>			
<i>AC-68-63</i>				<i>silt</i>			<i>1/2 ft</i>	<i>stream</i>			



PLOTTED ON GEOLOGIC MAP
AUG. 17/68 ϕ .

A. Charlie
July 23/68

105N-5



PLOTTED ON GEOCHEM MAP
AUGUST 17/68 $\$$

A Charlie
22 July 68

105-N-5

ATLAS EXPLORATIONS LIMITED

GEOCHEMICAL STREAM SEDIMENT SURVEY DATA

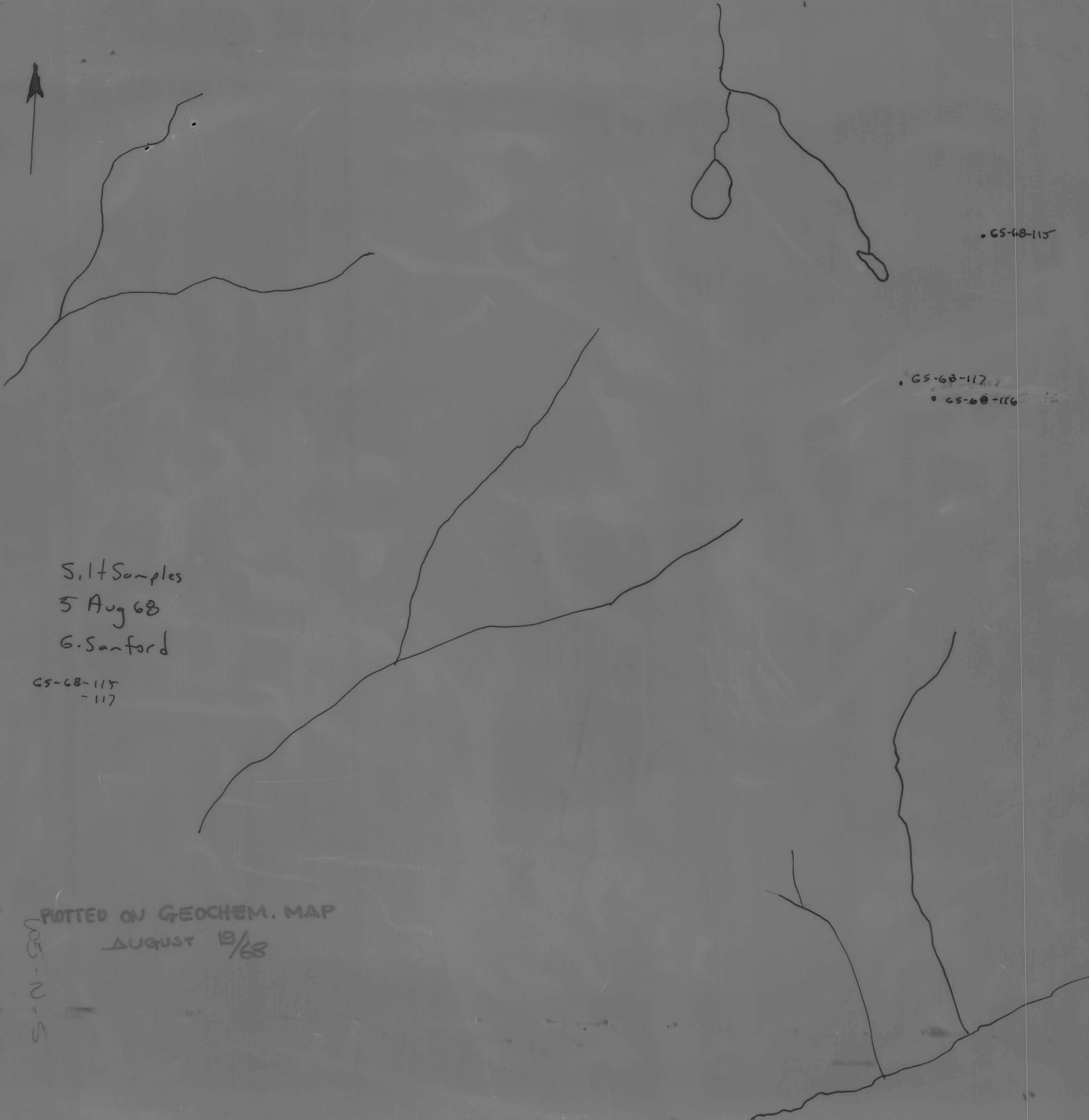
SAMPLER... *A. Charlie*

PHOTO NUMBER.....

DATE... *July 22, 1968*

Office Use Only		
Map.....		
Date Plotted.....		
Plotter.....		

Sample No.	Quartz P or A	Gossan or Min	Soil		Silt		Stream Width	Remarks	Analytical Results		
			Sand	Silt	Clay	Organic			Cu	Pb	Zn
<i>C-68-1</i>			<i>sand</i>				<i>10 ft.</i>				
<i>A.C-68-2</i>			<i>)</i>				<i>8 ft.</i>				
<i>A.C-68-3</i>			<i>sand</i>				<i>10 ft.</i>				
<i>A.C-68-4</i>				<i>silt</i>			<i>7 ft.</i>				
<i>A.C-68-5</i>			<i>sand</i>				<i>9 ft.</i>				
<i>A.C-68-6</i>				<i>silt</i>			<i>6 ft.</i>				
<i>A.C-68-7</i>			<i>sand</i>				<i>5 ft.</i>				
<i>A.C-68-8</i>			<i>sand</i>				<i>6 ft.</i>				
<i>A.C-68-9</i>				<i>silt</i>			<i>4 ft.</i>				
<i>A.C-68-10</i>			<i>sand</i>				<i>5 ft.</i>				
<i>A.C-68-11</i>				<i>silt</i>			<i>4 ft.</i>				
<i>A.C-68-12</i>				<i>silt</i>			<i>4 ft.</i>				
<i>A.C-68-13</i>			<i>sand</i>				<i>5 ft.</i>				
<i>A.C-68-14</i>				<i>silt</i>			<i>4 ft.</i>				
<i>A.C-68-15</i>			<i>sand</i>				<i>2 ft. dry ark bed</i>				
<i>A.C-68-16</i>			<i>sand</i>				<i>3 ft.</i>				



• GS-68-115

• GS-68-117

• GS-68-116

Silt Samples
5 Aug 68
G. Sanford

GS-68-115
-117

PLOTTED ON GEOCHEM. MAP
AUGUST 19/68

05-N-S

A 12203-438



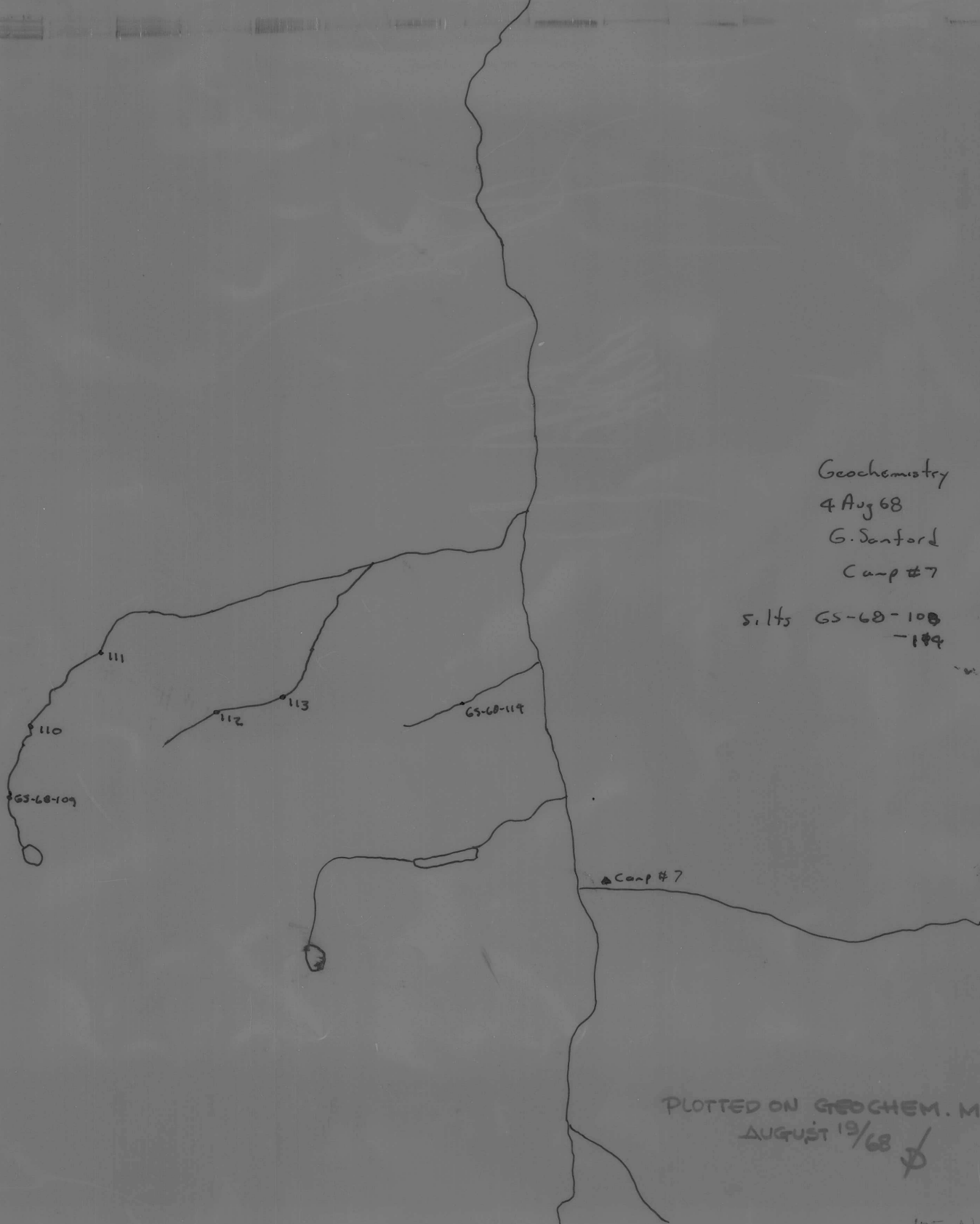
PLOTTED ON GEOCHEM MAP
AUGUST 19/68/

Geochemistry
G. Sanford
6 Aug 68

65-68-118
65-68-122

A12203-439

W5-N-5



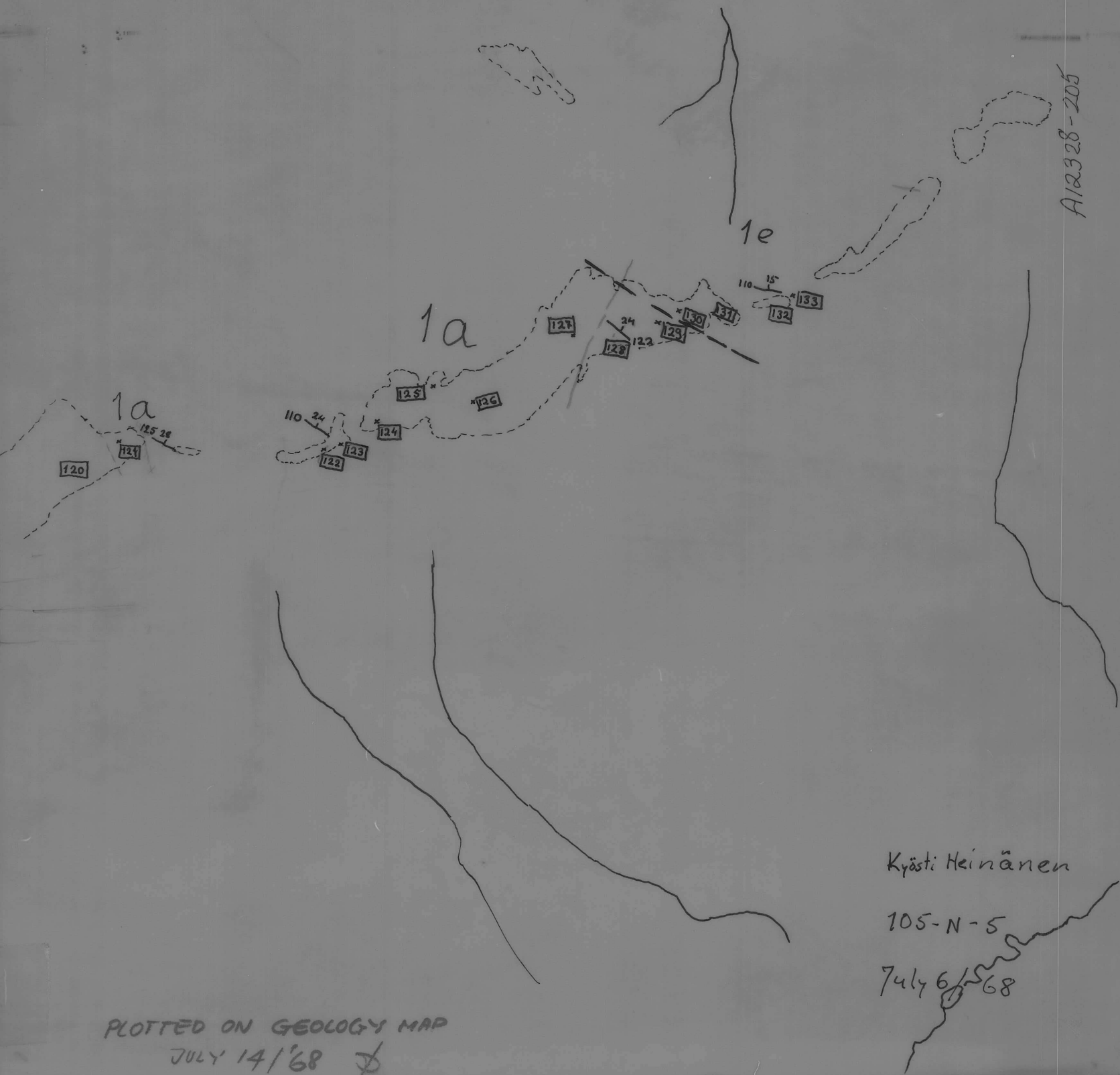
Geochemistry
4 Aug 68
G. Sanford
Camp #7

5.175 GS-68-108
-109

PLOTTED ON GEOCHEM. MAP
AUGUST 19/68

105-N-5

A12328-205



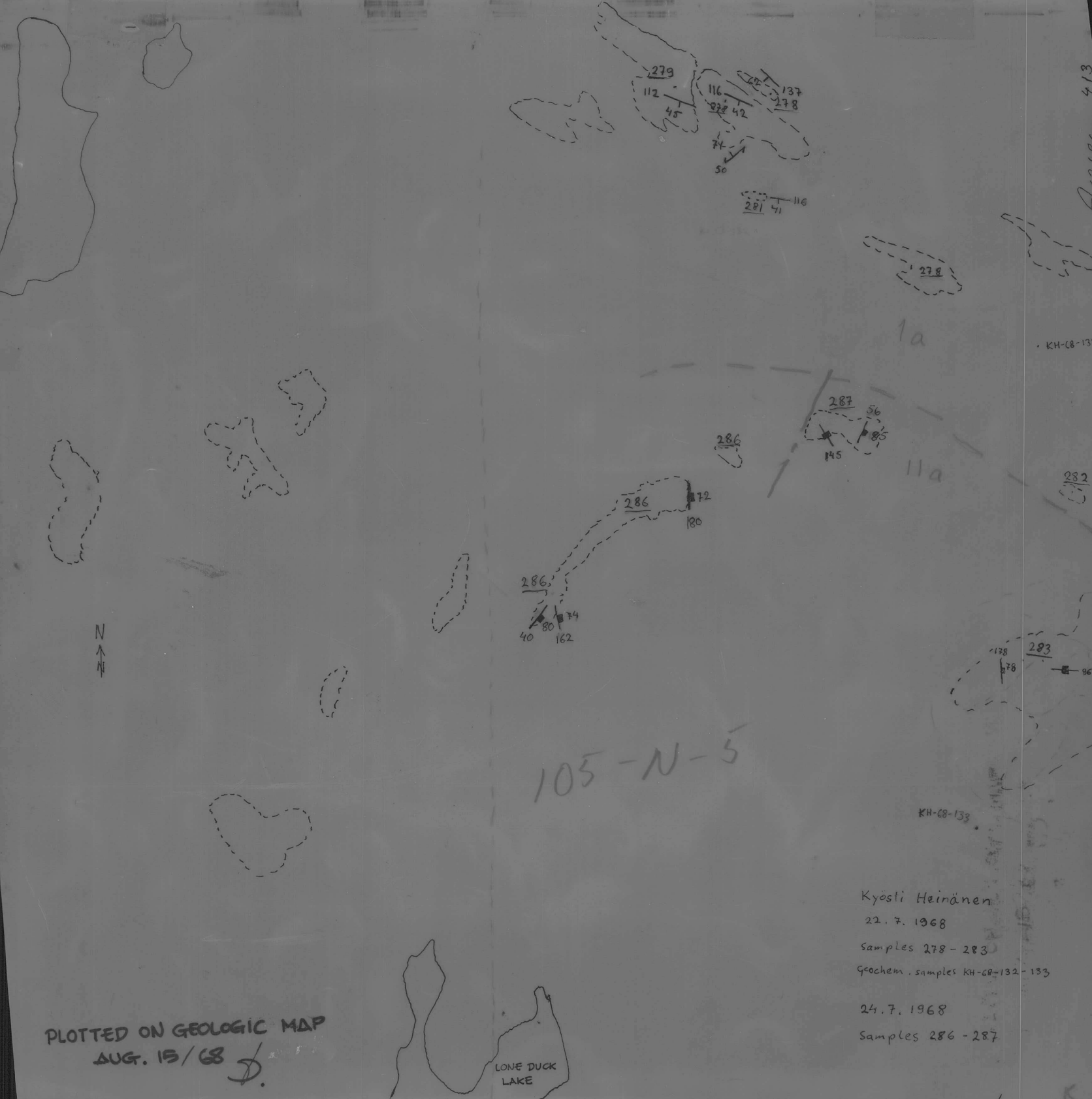
PLOTTED ON GEOLOGY MAP

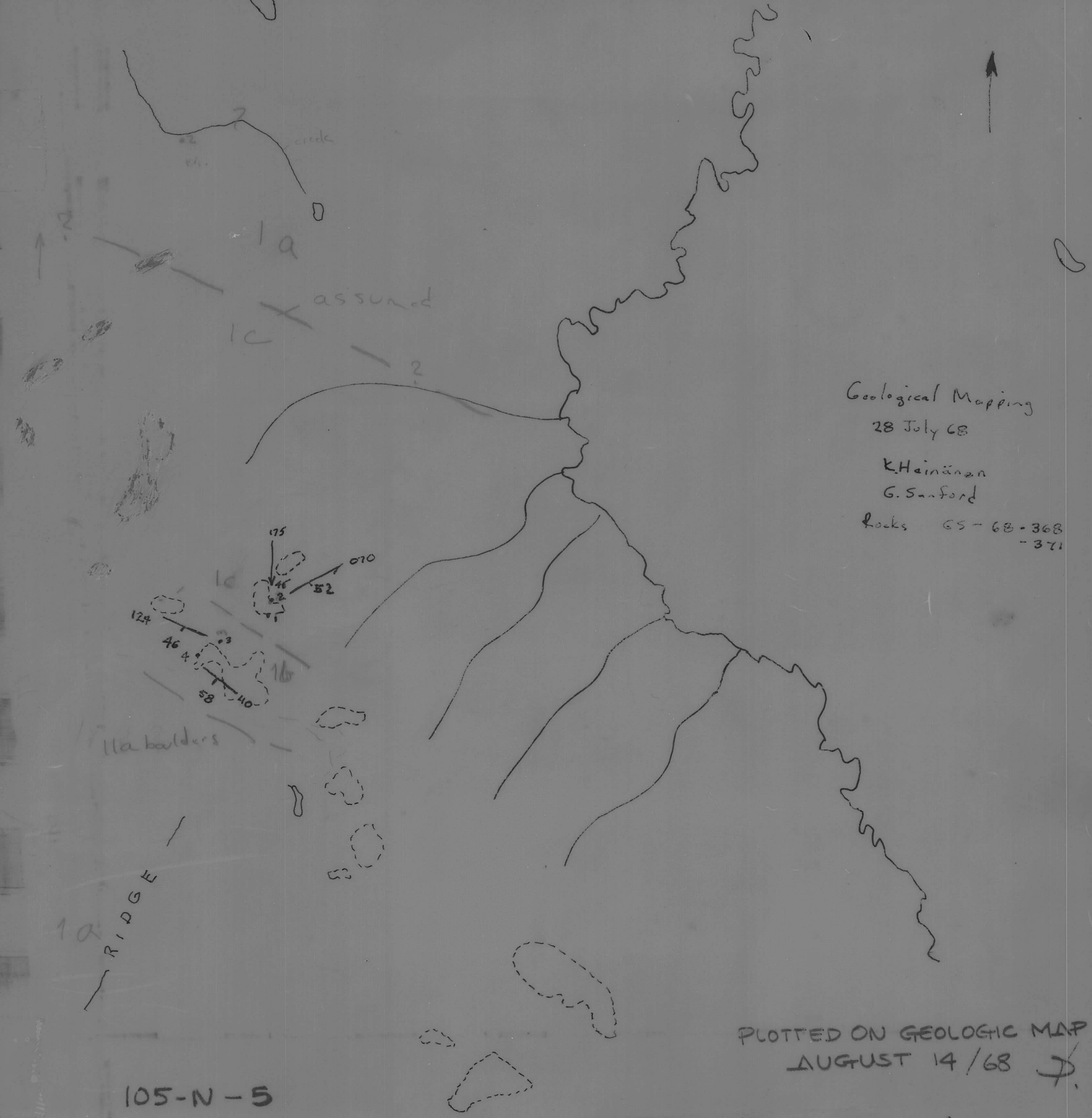
JULY 14/68 \$

Kyästi Heinänen

105-N-5

July 6/5 68





Geological Mapping
28 July 68

K. Heinänen
G. Sanford

Locs 65-68-368
-371

PLOTTED ON GEOLOGIC MAP
AUGUST 14/68 J.

105-N-5

A12282-92



Geological Mapping

4 Aug 68

G. Sanford

Rx GS-68-395
-F12

S. 1 + GS-68-108
-114



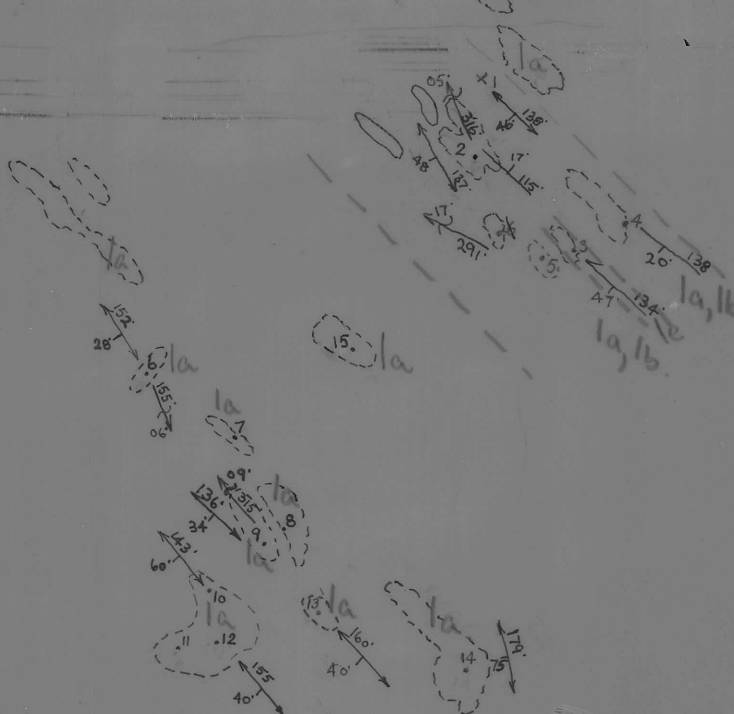
▲ Camp #7

A12203-440
LOS-N-84
5

PLOTTED ON GEOLOGIC MAP
AUG 31/68

A12282-6

N
APPROX.



PLOTTED ON GEOLOGIC MAP
AUGUST 14/68 ϕ .

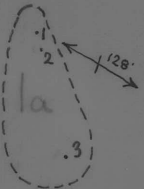
105-N-5
Central

GEOLOGY TRAVERSES
AUGUST 1, 1968.
AND AUGUST 3, 1968.
PHIL CLARIDGE
SAMPLES COLLECTED:
PC-68-129 → PC-68-135
PC-68-136 → PC-68-140.

A 12/86 - 416

ONE DUCK
LAKE.

↑
N
APPROX.



+4

x9

+5

8 x 7

x6

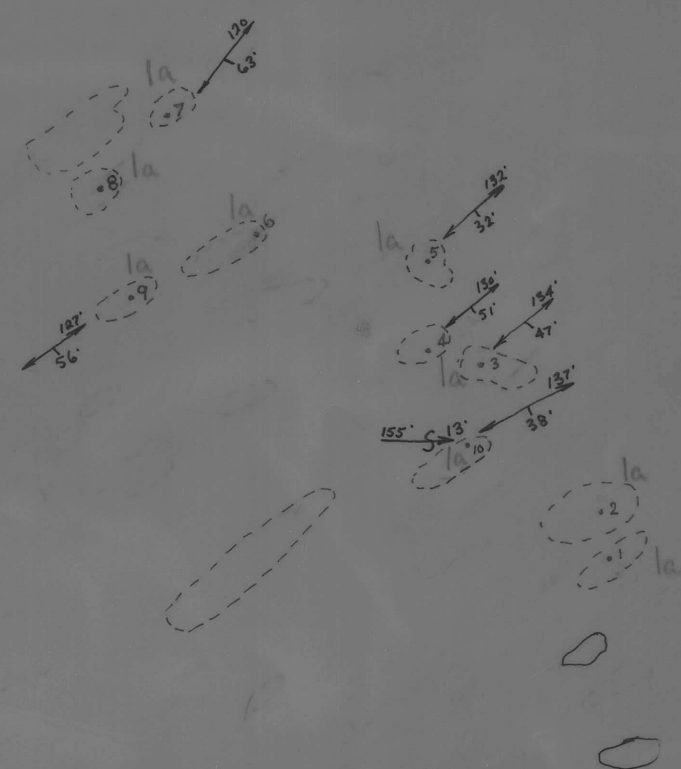
105-N-5

GEOLOGY TRAVERSE
PHIL CLARIDGE
JULY 23, 1968.
+ JULY 24, 1968.
SAMPLES: PC-68-105 → PC-68-110.

PLOTTED ON GEOLOGY MAP
AUGUST 2-1968

⊕

105-N-5



← APPROX. →

GEOLOGY TRAVERSE
JULY 26, 1968.
PHIL CLARIDGE
SAMPLES TAKEN:
PC-68-111 → PC-68-11B.

PLOTTED ON GEOLOGIC MAP
AUGUST 1 - 1968

105-N-5.

A/2282-95

A12186-415.



PLOTTED ON GEOCHEM. MAP
AUGUST 18/68
Φ.

GEOCHEM. SAMPLES
JULY 22-24, 1968.
PHIL CLARIDGE.

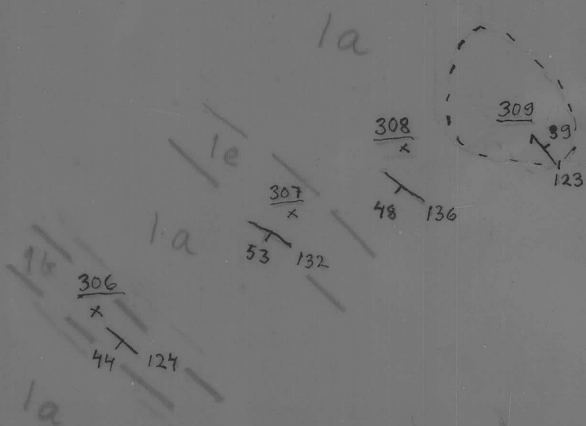
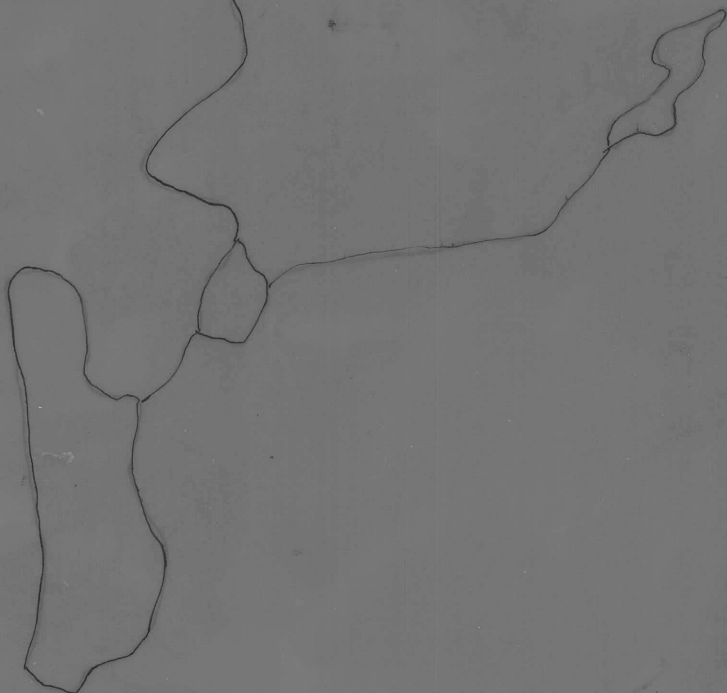
105-11-5



Kyösti Heinänen
105-N-5
N

July 6/68

PLOTTED ON GEOLOGY MAP
JULY 13/68



PLOTTED ON GEOLOGIC MAP
AUGUST 14/68 ϕ

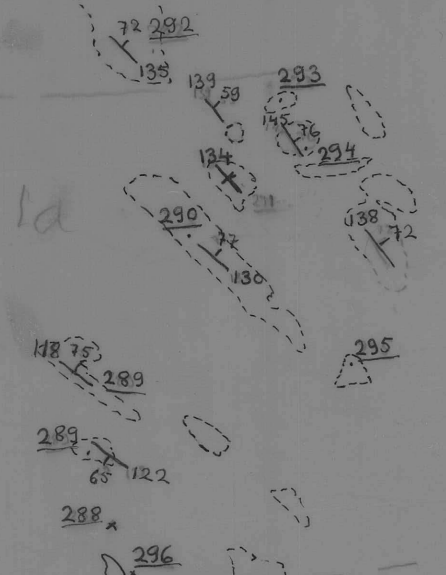
Kyösti Heinänen

3. 8. 1968

Samples 306-309

105-N-5

N
↑



1a

105-N-5

Kyösti Heinänen

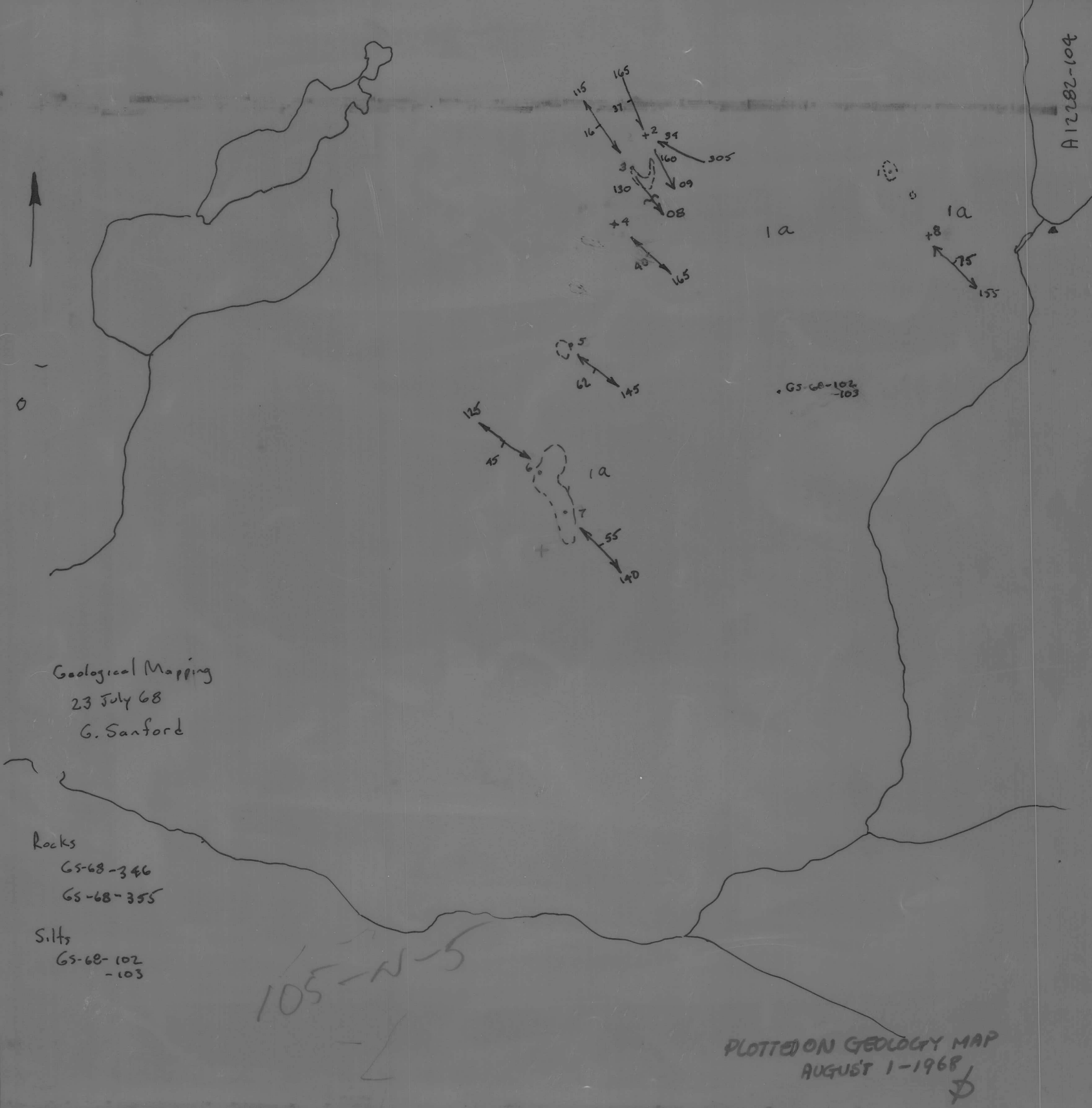
26.7.1968

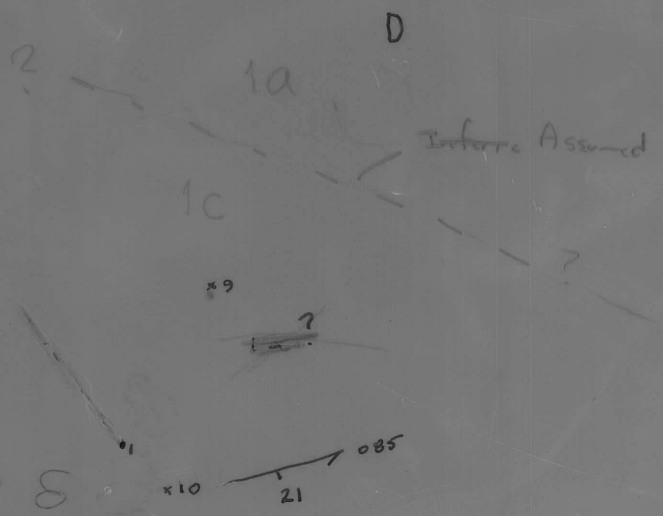
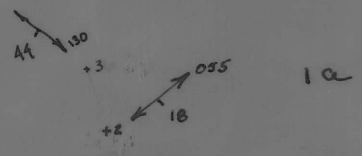
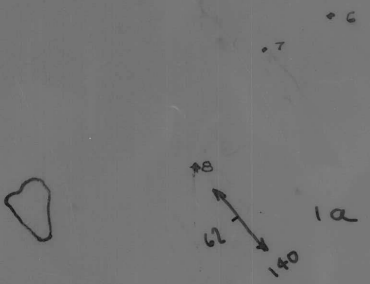
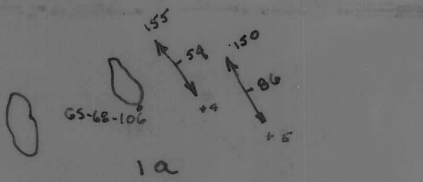
Samples 288 - 296

PLOTTED ON GEOLOGIC MAP

AUGUST 15/68 Φ .

A 12282-94





GS-10-S
A 12282-93

Geological Mapping
26 July 68
G. Sanford

Rx GS-68-360
- 367

Silt GS-68-106

PLOTTED ON GEOLOGIC MAP
AUGUST 15/68



105-N-5
A12186-304



105-N-5

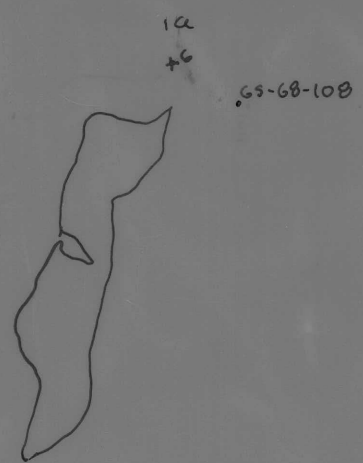
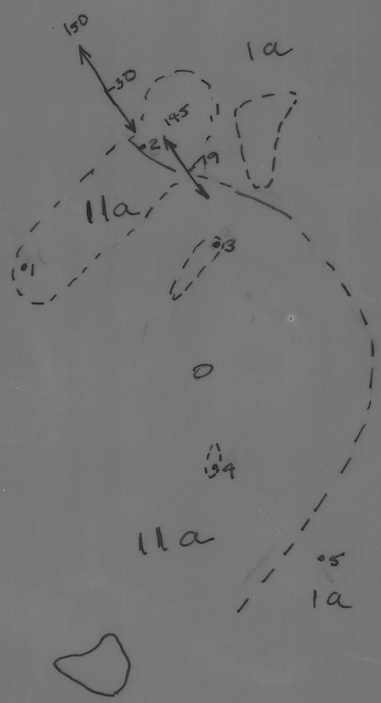
Geological Mapping

4 Aug 68

G. Sanford

Rx GS-68-395
-412

S. lts GS-68-108
-114



PLOTTED ON GEOLOGIC MAP
AUG. 15/68 ϕ .



Geological Mapping

22 July 68

G. Sanford

Rocks GS-68-323
-345

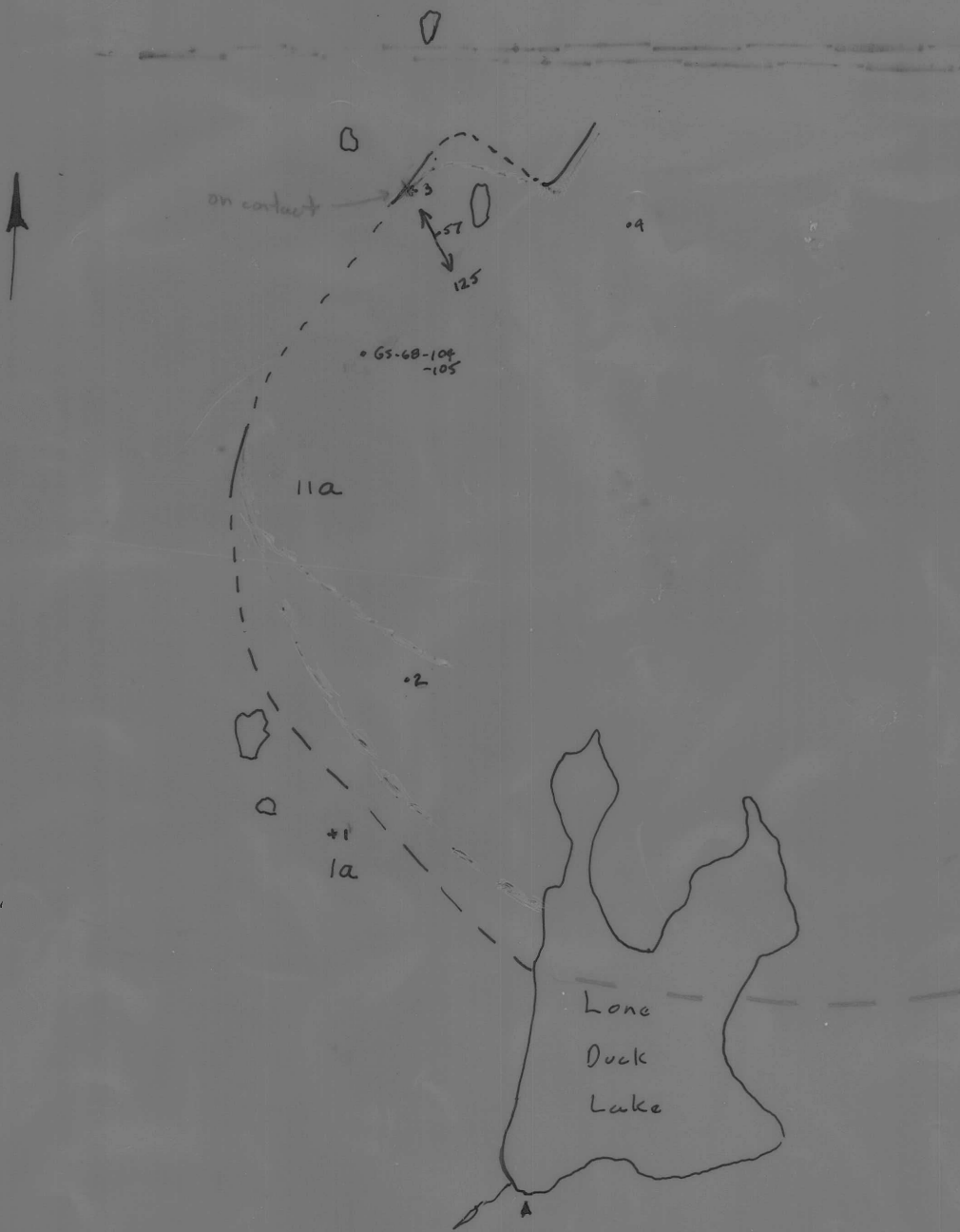
Silts GS-68-100
-101

105-N-5

PLOTTED ON GEOLOGY MAP
AUGUST 1-1968

\$

A 12186-414



105-N-5

PLOTTED ON GEOLOGIC MAP
AUGUST 1-1968

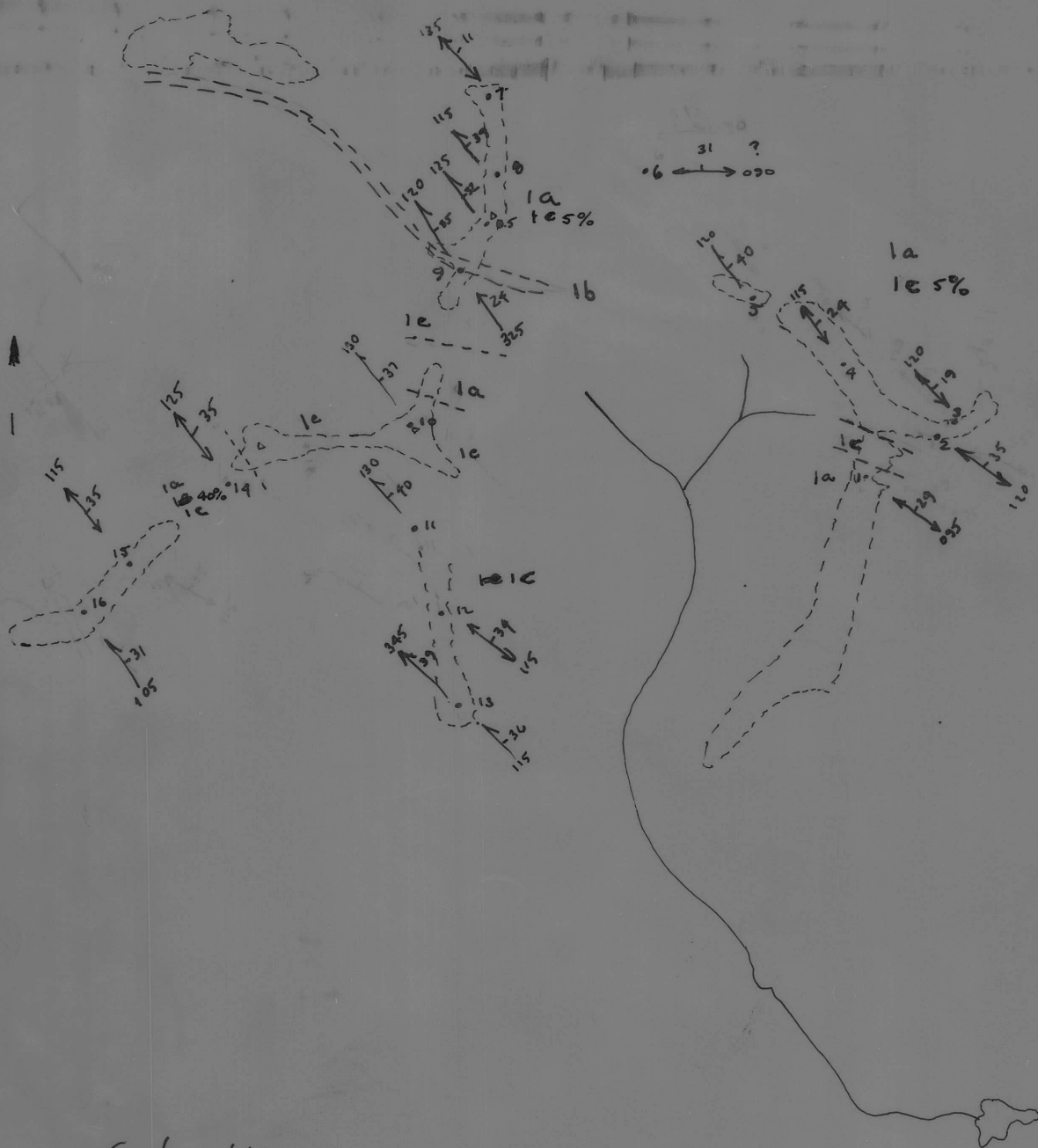
D

Geological Mapping

29 July 68

G. Sanford

Rxs - G5-68-356
-359Silt G5-68-104
-105



Geological Mapping

6 July 68

G. Sanford

105-N-5

PLOTTED ON GEOLOGIC MAP
JULY 15-68

♂

A12328-216

