

ATLAS EXPLORATIONS LIMITED

018059

GEOCHEMICAL STREAM SEDIMENT SURVEY DATA

SAMPLER *Robert E. Sel*

PHOTO NUMBER.....

DATE *JULY 2 1968*

Office Use Only

Map.....

Date Plotted.....

Plotter.....

Sample No.	Quartz P or A	Gossan or Min	Soil		OV Silt		Stream Width	Remarks	Analytical Results		
			Sand	Silt	Clay	Organic			Cu	Pb	Zn
RE-68-348					CLAY		6 INCH				
RE-6-349					SAND		1				
RE-68-350					SAND		2				
RE-68-351					SAND		1				
RE-68-352					SAND		1				
RE-68-353					SAND		3				
RE-68-354					SAND		3				
RE-68-355					SAND		4				
RE-68-356					MOSSIE SAND		4				
RE-68-357					SAND		4				
RE-68-358					SAND		2				
RE-68-359					SAND		2				
RE-68-360					SAND		2				
RE-68-361					SAND		2				
RE-68-362					SAND		2	QUARTZITE OUTCROP			
RE-68-363					SAND		2				

ATLAS EXPLORATIONS LIMITED

GEOCHEMICAL STREAM SEDIMENT SURVEY DATA

SAMPLER *Robert E. Taylor*

PHOTO NUMBER.....

DATE *JULY 3 1968*

Office Use Only

Map.....

Date Plotted.....

Plotter.....

Sample No.	Quartz P or A	Gossan or Min	Soil		<i>DO</i> Silt		Stream Width	Remarks	Analytical Results		
			Sand	Silt	Clay	Organic			Cu	Pb	Zn
RE-68-364					SAND		1	SNOW DRIFT			
RE-68-365					SAND		1	SNOW DRIFT			
RE-68-366					SANDY CLAY		1				
RE-68-367					CLAY		1	RUSTY QUARTZITE OUTCROP			
RE-68-368					MOSSIE		1				
RE-68-369					SAND		1	GARNET OUTCROP			
RE-68-370					SAND		2	RUSTY QUARTZITE OUTCROP			
RE-68-371					SAND		2				
RE-68-372					SAND		3				
RE-68-373					SAND		3				
RE-68-374					SAND		3				
RE-68-375					SAND		4				
RE-68-376					SAND		4				
RE-68-377					SAND		4				
RE-68-378					SAND		5				
RE-68-379					SAND		5				

ATLAS EXPLORATIONS LIMITED

GEOCHEMICAL STREAM SEDIMENT SURVEY DATA

SAMPLER Robert E. Hill

PHOTO NUMBER

DATE JULY 6 1968

<u>Office Use Only</u>		
Map.....		
Date Plotted.....		
Plotter.....		

Sample No.	Quartz P or A	Gossan or Min	Soil		<u>DV</u> Silt		Stream Width	Remarks	Analytical Results		
			Sand	Silt	Clay	Organic			Cu	Pb	Zn
RE-68-385					MOSSIE CLAY		DRY				
RE-68-386					MOSSIE CLAY		1				
RE-68-387					MOSSIE CLAY		1				
RE-68-388					MOSSIE CLAY		2				
RE-68-389					GRIVEL		3				
RE-68-390					SAND		3				
RE-68-391					GRIVEL		3				
RE-68-392					SAND		5				
RE-68-393					SAND		5				
RE-68-394					SAND		5				
RE-68-395					SAND		6				
RE-68-396					SAND		6				
RE-68-397					SAND		6				
RE-68-398					MOSSIE CLAY		7				
RE-68-399					SAND		7				
RE-68-400					CLAY		1				

ATLAS EXPLORATIONS LIMITED

GEOCHEMICAL STREAM SEDIMENT SURVEY DATA

SAMPLER *Robert E. Taylor*

PHOTO NUMBER.....

DATE *JULY 7 1968*

Office Use Only

Map.....

Date Plotted.....

Plotter.....

Sample No.	Quartz P or A	Gossan or Min	Soil		<input checked="" type="checkbox"/> Silt		Stream Width	Remarks	Analytical Results		
			Sand	Silt	Clay	Organic			Cu	Pb	Zn
RE-68-410					SAND		2				
RE-68-411					SANDY CLAY		6 INCH				
RE-68-412					MOSSIE CLAY		8 INCH				
RE-68-413					SAND		1				
RE-68-414					SAND		1				
RE-68-415					SAND		2				
RE-68-416					SAND		2				
RE-68-417					SAND		2				
RE-68-418					SAND		3				
RE-68-419					SAND		3				
RE-68-420					GRIVEL CLAY		2				
RE-68-421					SAND		1				
RE-68-422					MOSSIE CLAY		8 INCH				
RE-68-423					SAND CLAY		6 INCH				
RE-68-424					CLAY		6 INCH				
RE-68-425			RUSTY CLAY					SOIL			

N
1" = 1/2 MI

KH-68-156

5943

5500

157
158

159

160

162

163

164

167

168

169

170

171

172

173

174

175

176

177

178

179

HESS RIVER

Kyösti Heinänen
Aug 9, 1968
PLOTTE ON GEOCHEM. MAP
AUGUST 21/68 J.

ATLAS EXPLORATIONS LIMITED

GEOCHEMICAL STREAM SEDIMENT SURVEY DATA

SAMPLER... *Kyösti Heinänen*

PHOTO NUMBER... *105 N-6*

DATE... *9.8. 1968*

<u>Office Use Only</u>		
Map.....		
Date Plotted.....		
Plotter.....		

Sample No.	Quartz P or A	Gossan or Min	Soil		Silt		Stream Width	Remarks	Analytical Results		
			Sand	Silt	Clay	Organic			Cu	Pb	Zn
<i>KH-68-156</i>	<i>P</i>	<i>Nil</i>		<i>stream</i>			<i>10'</i>				
<i>157</i>	<i>P</i>	<i>Nil</i>		<i>stream</i>			<i>10'</i>				
<i>158</i>	<i>P</i>	<i>Nil</i>		<i>stream</i>			<i>2'</i>				
<i>159</i>	<i>P</i>	<i>Nil</i>	<i>stream</i>				<i>12'</i>				
<i>160</i>	<i>P</i>	<i>Nil</i>	<i>stream</i>				<i>12'</i>				
<i>161</i>	<i>P</i>	<i>Nil</i>		<i>stream</i>			<i>3'</i>				
<i>162</i>	<i>P</i>	<i>Nil</i>		<i>stream</i>			<i>15'</i>				
<i>163</i>	<i>P</i>	<i>Nil</i>		<i>stream</i>			<i>15'</i>				
<i>164</i>	<i>P</i>	<i>Nil</i>		<i>stream</i>			<i>3'</i>				
<i>165</i>	<i>P</i>	<i>Nil</i>		<i>stream</i>			<i>12'</i>				
<i>166</i>	<i>P</i>	<i>Nil</i>	<i>stream</i>				<i>12'</i>				
<i>167</i>	<i>P</i>	<i>Nil</i>		<i>stream</i>			<i>12'</i>				
<i>168</i>	<i>P</i>	<i>Nil</i>		<i>stream</i>			<i>12'</i>				
<i>169</i>	<i>P</i>	<i>Nil</i>		<i>stream</i>			<i>13'</i>				
<i>170</i>	<i>P</i>	<i>Nil</i>		<i>stream</i>			<i>15'</i>				
<i>171</i>	<i>P</i>	<i>Nil</i>		<i>stream</i>			<i>12'</i>				

N
↑

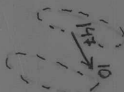
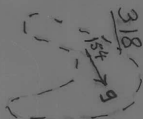
KH-68-138

gossan

KH-68-139

KH-68-140

KH-68-141



317
159
181

1a

316

315

11a

GEOCHEM.
PLOTTED ON GEOLOGIC MAP
AUGUST 14/68

Kyösti Heinänen

6.8. 1968

Samples 315-318

Geochem. samples:

KH-68-138 - KH-68-141

A12203-440

105-N-6

N
↑



Kyösti Heinänen

4.8.1968

Samples 310

5.8.1968

Samples 311-314

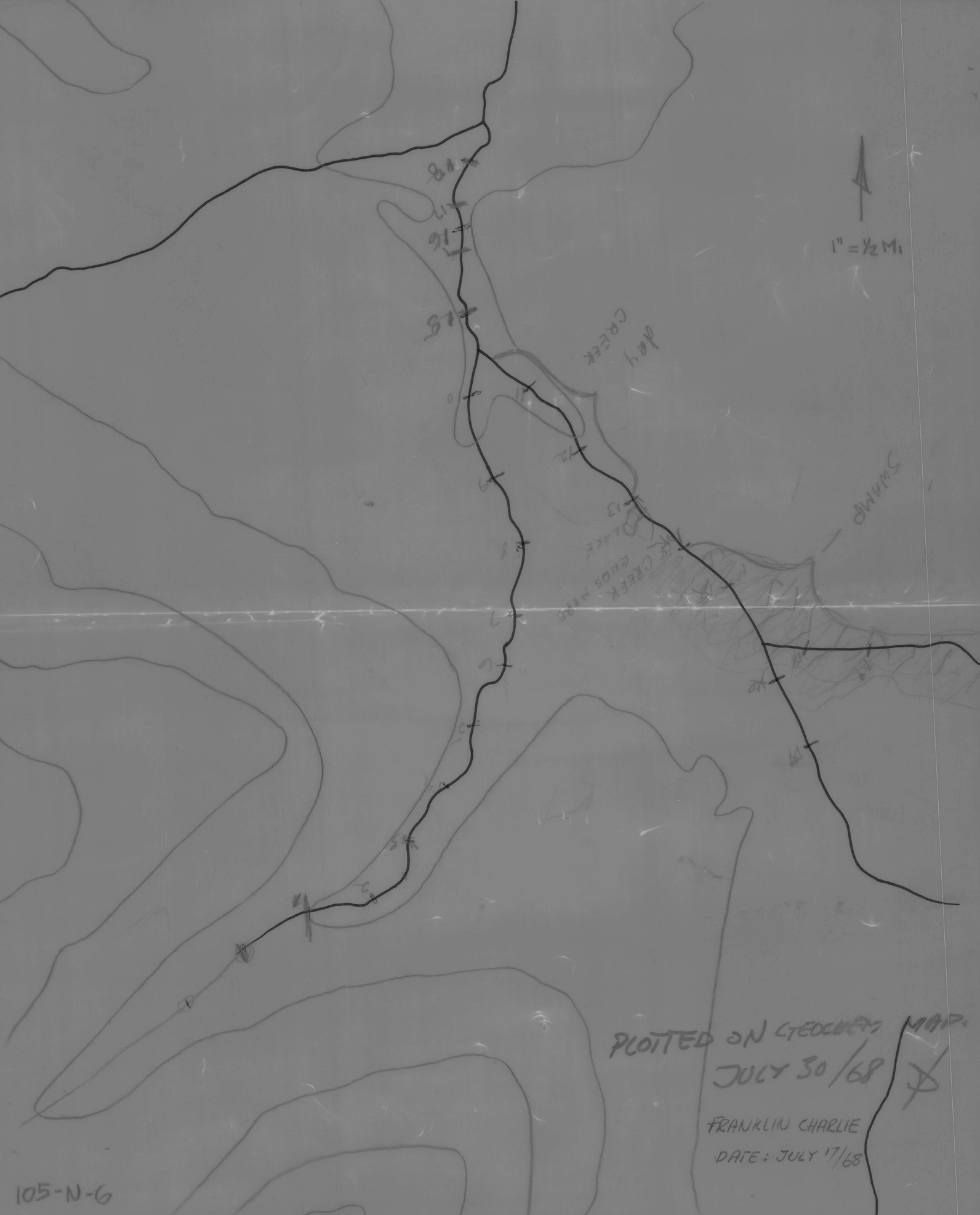
PLOTTED ON GEOLOGIC MAP

AUG. 14/68

Ⓟ

105-N-6

A12203-439



1" = 1/2 Mi

dog
CREEK

SWAMP

CREEK
ENDS
HERE

PLOTTED ON CEDERBERRY MAP.

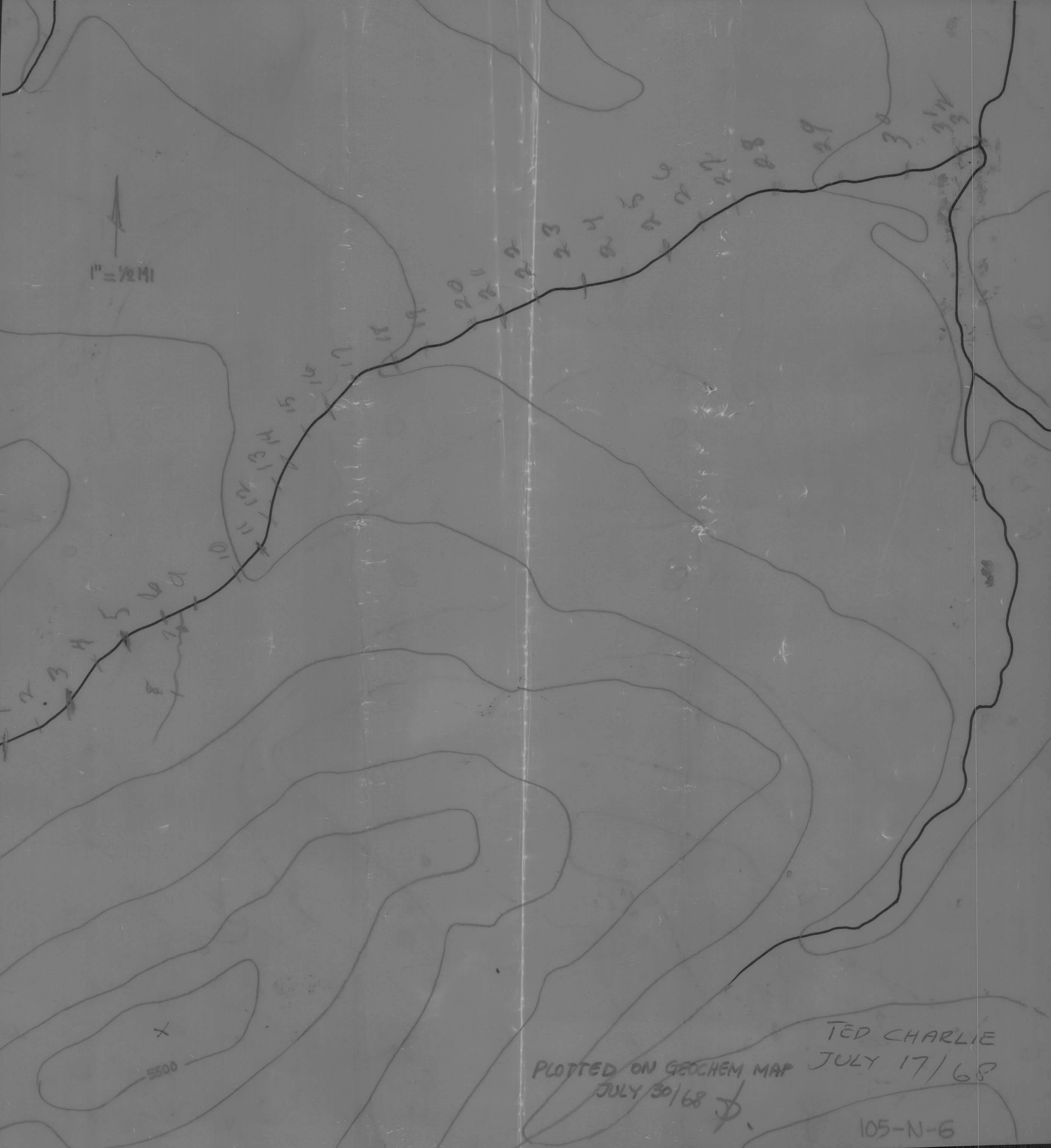
JULY 30/68

FRANKLIN CHARLIE

DATE: JULY 17/68

105-N-6

1" = 1/2 MI



X

5500

PLOTTED ON GEOCHEM MAP

JULY 30/68

TED CHARLIE

JULY 17/68

105-N-6

Hess

River



2500

PLOTTED ON GEOCHEM MAP
AUG. 18/68

105N-6

H. Charlie
Aug. 4/68

ATLAS EXPLORATIONS LIMITED

GEOCHEMICAL STREAM SEDIMENT SURVEY DATA

SAMPLER... *A. Charlie*

PHOTO NUMBER.....

DATE... *Aug 4* / 1968

Office Use Only

Map.....

Date Plotted.....

Plotter.....

Sample No.	Quartz P or A	Gossan or Min	Soil		Silt		Stream Width	Remarks	Analytical Results		
			Sand	Silt	Clay	Organic			Cu	Pb	Zn
<i>T.C. 68-112</i>				<i>silt</i>			<i>18 ft</i>				
<i>AC 68-113</i>			<i>sand</i>				<i>12 ft</i>				
<i>AC 68-114</i>			<i>sand</i>				<i>14 ft</i>	<i>canyon</i>			
<i>AC 68-115</i>			<i>sand</i>				<i>11 ft</i>	<i>"</i>			
<i>AC 68-116</i>			<i>soil sample</i>				<i>10 ft</i>	<i>canyon "Boulders"</i>			
<i>AC 68-117</i>			<i>soil sample</i>				<i>12 ft</i>	<i>" "</i>			
<i>AC 68-118</i>			<i>sand</i>				<i>14 ft</i>				
<i>AC 68-119</i>			<i>sand</i>				<i>6 ft</i>	<i>creek East</i>			
<i>AC 68-120</i>			<i>silt</i>				<i>6 ft</i>	<i>creek "</i>			
<i>AC 68-121</i>			<i>sand</i>				<i>11 ft</i>	<i>canyon</i>			
<i>AC 68-122</i>			<i>soil sample</i>				<i>10 ft</i>	<i>canyon</i>			
<i>AC 68-123</i>			<i>sand</i>				<i>10 ft</i>	<i>"</i>			
<i>AC 68-124</i>			<i>soil sample</i>				<i>11 ft</i>	<i>Boulders + gravel</i>			
<i>AC 68-125</i>			<i>sand</i>				<i>10 ft</i>				
<i>AC 68-126</i>				<i>silt</i>			<i>1 ft</i>	<i>creek</i>			
<i>AC 68-127</i>				<i>silt</i>			<i>1/2 ft</i>	<i>creek</i>			



PLOTTED ON GEOCHEM. MAP
AUGUST 19/68 ϕ .

A. Charlie

Aug 5/68 + Aug 4/68

105N-6

ATLAS EXPLORATIONS LIMITED

GEOCHEMICAL STREAM SEDIMENT SURVEY DATA

SAMPLER..... *A. Charlie*

PHOTO NUMBER.....

DATE..... *Aug. 5 / 68*

Office Use Only

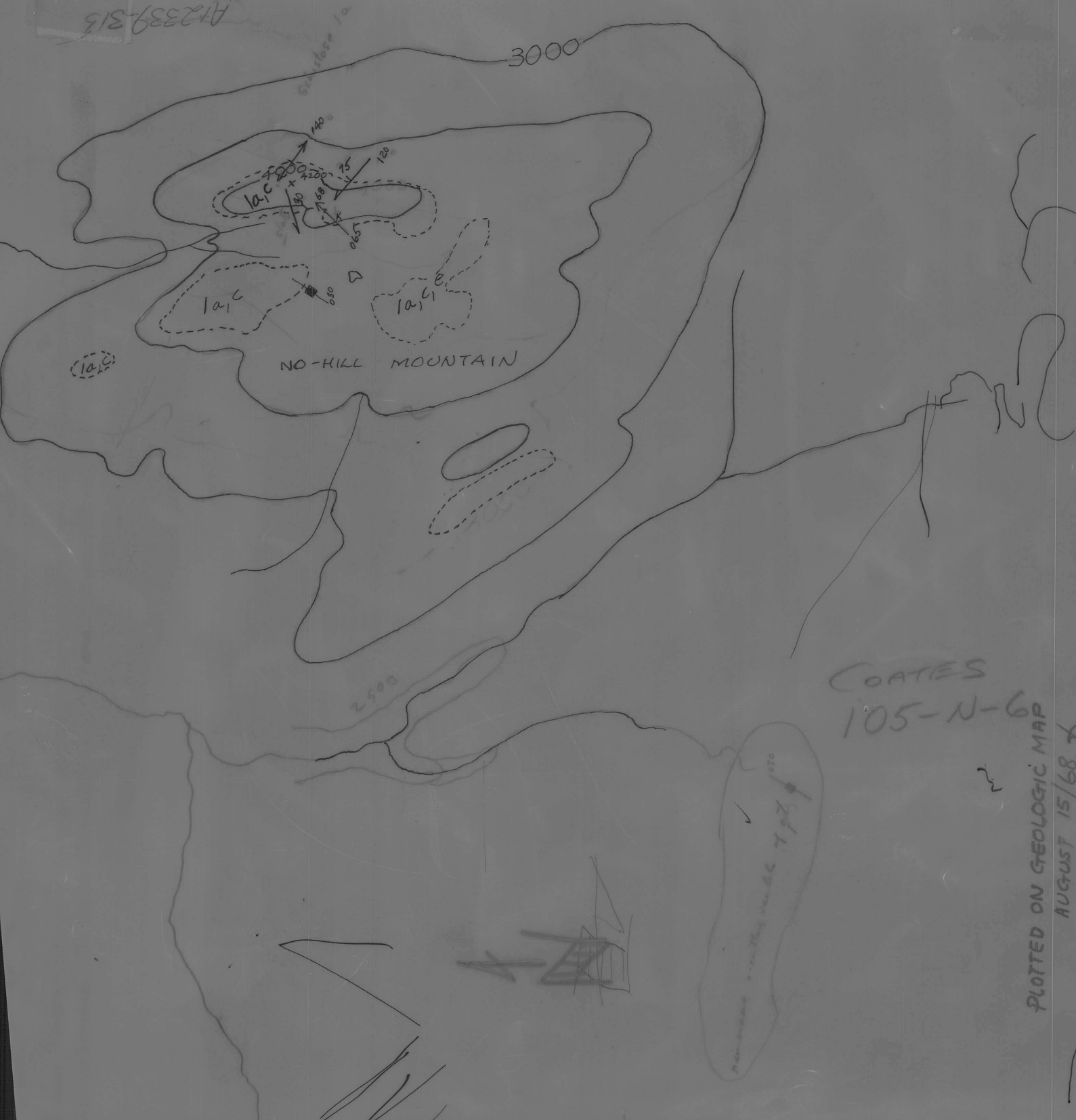
Map.....

Date Plotted.....

Plotter.....

Sample No.	Quartz P or A	Gossan or Min	Soil		Silt		Stream Width	Remarks	Analytical Results		
			Sand	Silt	Clay	Organic			Cu	Pb	Zn
<i>AC-68-137</i>				<i>silt</i>			<i>9 ft</i>				
<i>AC-68-138</i>				<i>silt</i>			<i>6 ft</i>				
<i>AC-68-139</i>				<i>silt</i>			<i>14 ft</i>	<i>from lake</i>			
<i>AC-68-140</i>				<i>silt</i>			<i>3 ft</i>	<i>little stream into lake</i>			
<i>AC-68-141</i>			<i>sand</i>				<i>3 ft</i>	<i>from lake right side</i>			
<i>AC-68-142</i>				<i>silt</i>			<i>3 ft</i>	<i>" " " "</i>			
<i>AC-68-143</i>				<i>silt</i>			<i>2 1/2 ft</i>	<i>creek West side</i>			
<i>AC-68-144</i>				<i>silt</i>			<i>3 ft</i>	<i>creek " "</i>			
<i>AC-68-145</i>				<i>silt</i>			<i>3 ft</i>	<i>creek West side</i>			
<i>AC-68-146</i>				<i>silt</i>			<i>2 ft</i>	<i>creek " "</i>			
<i>AC-68-147</i>				<i>silt</i>			<i>13 ft</i>	<i>main creek</i>			
<i>AC-68-148</i>				<i>silt</i>			<i>10 ft</i>				
<i>AC-68-149</i>				<i>silt</i>			<i>1 ft</i>	<i>creek East side</i>			
<i>AC-68-150</i>				<i>silt</i>			<i>1 ft</i>	<i>" " "</i>			
<i>AC-68-151</i>				<i>silt</i>			<i>2 ft</i>	<i>creek East side</i>			
<i>AC-68-152</i>				<i>silt</i>			<i>2 ft</i>	<i>creek " "</i>			

A12339-313



COATES
105-N-6

PLOTTED ON GEOLOGIC MAP

AUGUST 15/68 P.

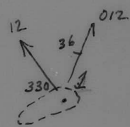
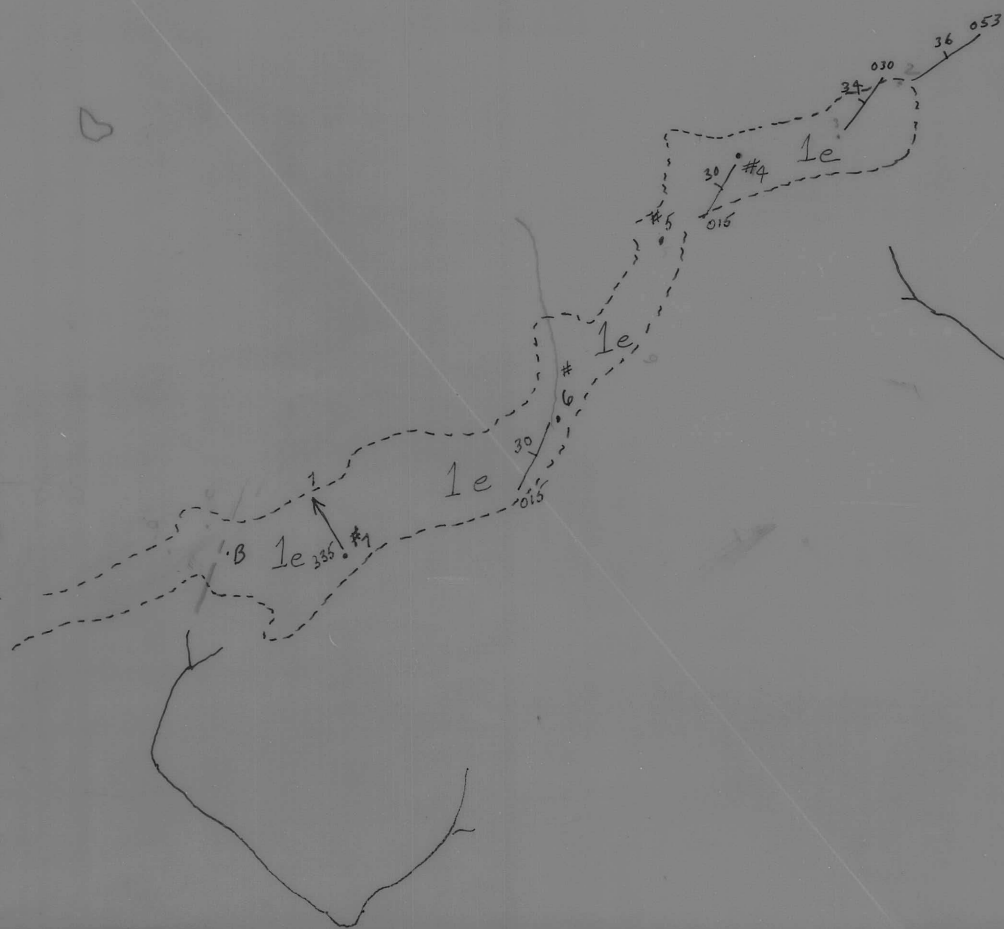
307



PLOTTED ON GEO
JULY 3-68 ϕ .

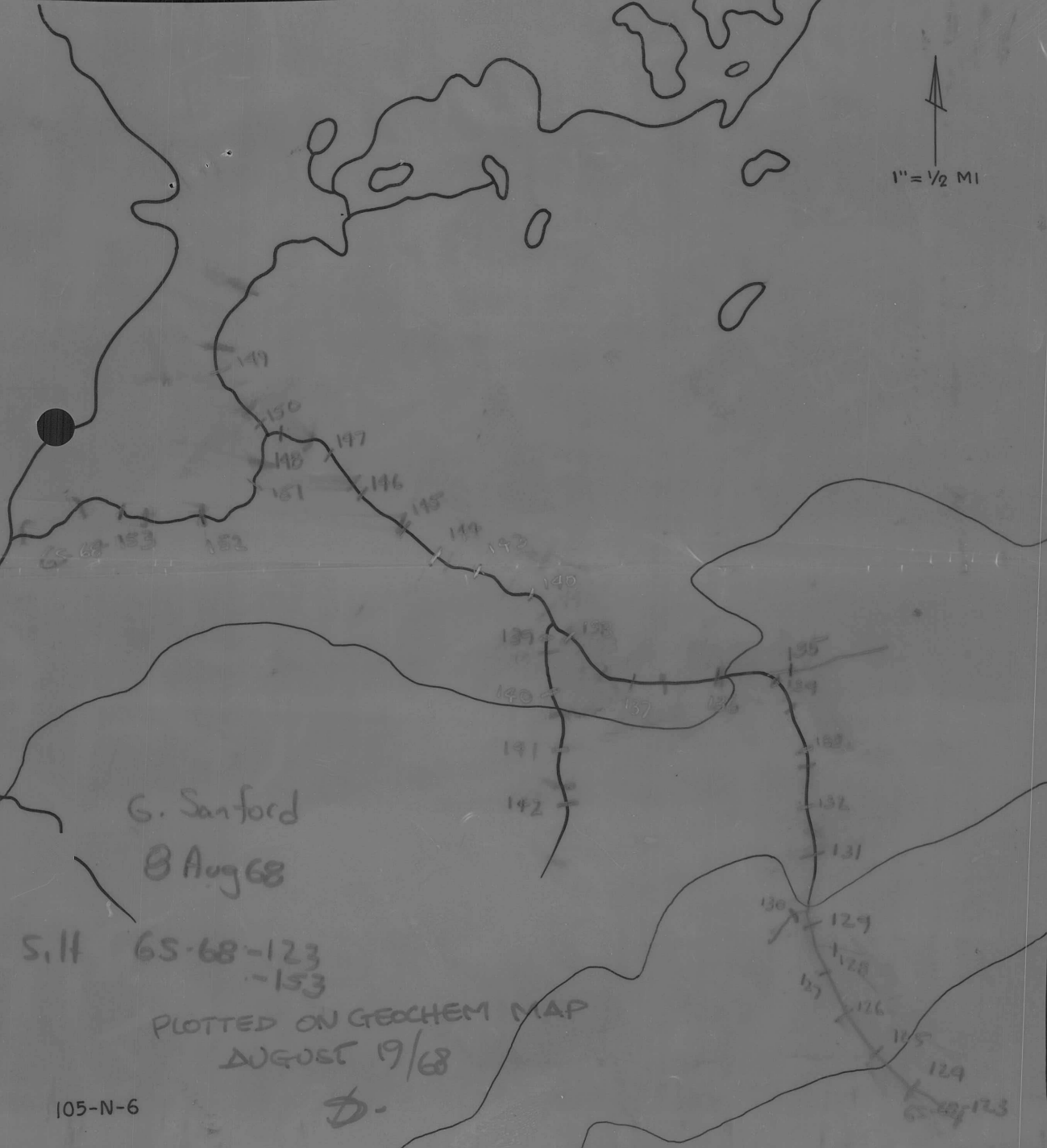
105-N-6
T.C. JULY '68

105-N-6
A 10245-113



↑
PLOTTED ON GEO
JULY 3/68 D.

1" = 1/2 MI



G. Sanford
8 Aug 68

Silt 65-68-123
-153

PLOTTED ON GEOCHEM MAP
AUGUST 19/68

D.

ATLAS EXPLORATIONS LIMITED

GEOCHEMICAL STREAM SEDIMENT SURVEY DATA

SAMPLER.....G. Sanford.....

PHOTO NUMBER.....

Overlay 105-N-6

DATE.....B. Aug. 68.....

Office Use Only

Map.....

Date Plotted.....

Plotter.....

Sample No.	Quartz P or A	Gossan or Min	Soil		Silt		Stream Width	Remarks	Analytical Results		
			Sand	Silt	Clay	Organic			Cu	Pb	Zn
5-68-123	P		✓	✓		✓	<1'	Qtz. float, org, hard to get silt			
124	P		/	/		✓	1'	"			
125	P			/		✓	1'				
126	P			✓		✓	1.5'				
127	P			✓		✓	2'				
128	P			✓		✓	1'	Flow from East			
129	P			/		✓	2'				
130	P			✓		✓	<1'	Flow from South			
131	P			✓		✓	3'	+300' to prominent ridge			
132	P			✓		✓	3'				
133	P			✓		✓	4'				
134	P			/		✓	4'	Relatively open. OK? for choppy			
135	P			✓		✓	1 1/2'	sluggish, swampy area some org			
136	P		/	/		✓	5'				
137	P			✓		✓	5'				
65-68-138	P			✓		✓	5 1/2'				

ATLAS EXPLORATIONS LIMITED

GEOCHEMICAL STREAM SEDIMENT SURVEY DATA

SAMPLER.....G. Sanford.....

PHOTO NUMBER.....

OVERLAY 105-N-6

DATE.....8 Aug, 68.....

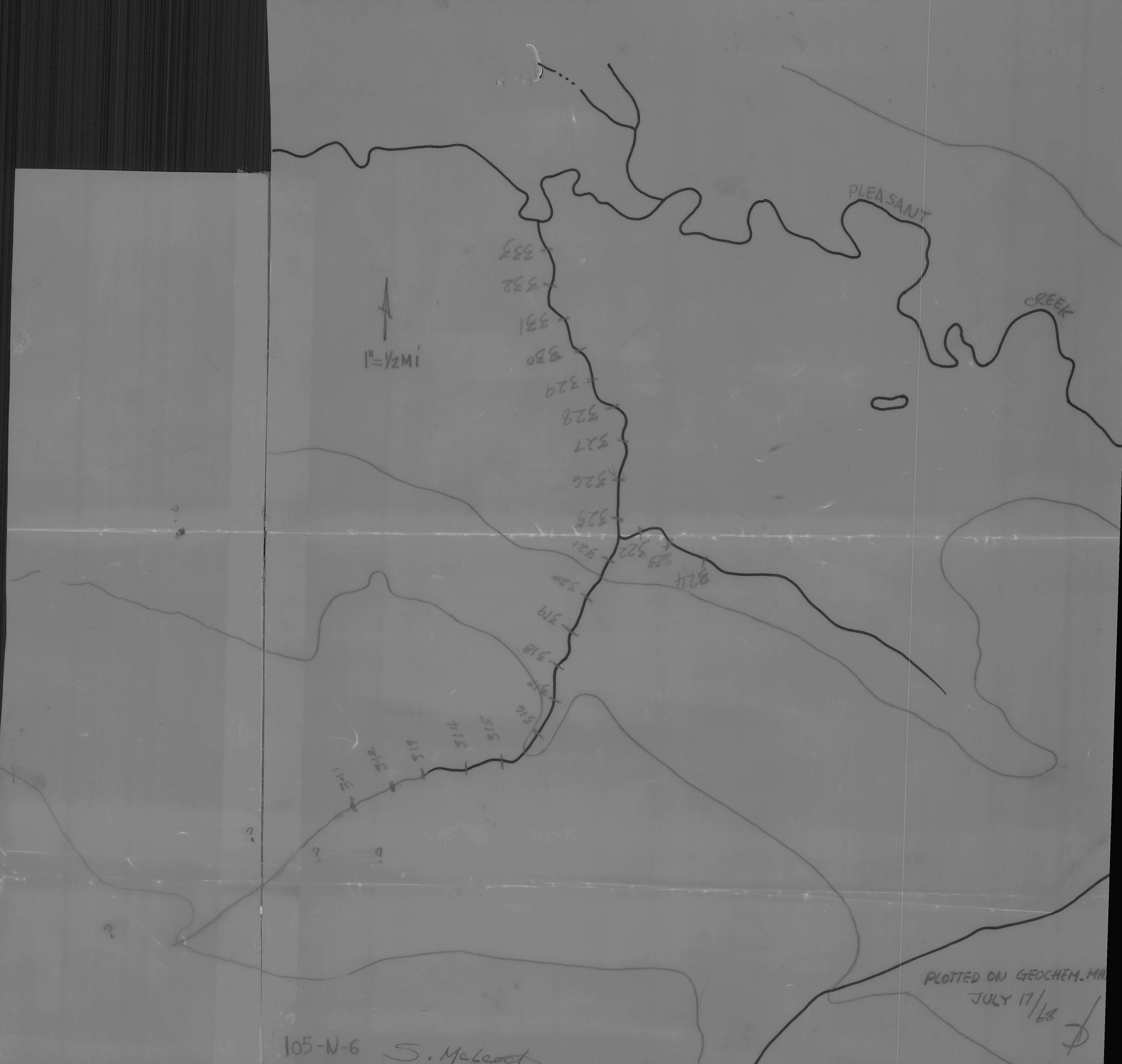
Office Use Only

Map.....

Date Plotted.....

Plotter.....

Sample No.	Quartz P or A	Gossan or Min	Soil		Silt		Stream Width	Remarks	Analytical Results		
			Sand	Silt	Clay	Organic			Cu	Pb	Zn
568-139	P			/		/	3'	Main drainage from S			
140	P			/		/	3'	Schist float			
141	P			/		/	3'				
142	P			/		/	3'				
143	P			/		/	5'				
144	P			/		/	5'				
145	P			/		/	5'				
146	P			/		/	5'				
147	P			/		/	5'				
148	P			/		/	5'				
149	P			/		/	30'	Above junction Diff to get sample			
150	P			/		/	30'	At junction "			
151	P			/		/	30'	"			
152	P			/		/	30'	"			
65-68-153	P			/		/	30'	"			
							30'	"			



105-N-6 S. McLeod

PLOTTED ON GEOCHEM. MAP

JULY 17/68

ATLAS EXPLORATIONS LIMITED

GEOCHEMICAL STREAM SEDIMENT SURVEY DATA

SAMPLER. SAM M CLEOD

PHOTO NUMBER.....

DATE. JULY 7 1968

<u>Office Use Only</u>		
Map.....		
Date Plotted.....		
Plotter.....		

Sample No.	Quartz P or A	Gossan or Min	Soil		Silt		Stream Width	Remarks	Analytical Results		
			Sand	Silt	Clay	Organic			Cu	Pb	Zn
311		SILT GRAVEL					4	FLOOD IN STREAM			
312		SILT GRAVEL					10	STREAM			
313		SAND GRAVEL					10	STREAM			
314		SILT SAND					10	STREAM			
315		SAND GRAVEL					10	STREAM			
316		SILT GRAVEL					10	STREAM			
317		FINE SAND					10	STREAM			
318		SILT SAND					10	STREAM			
319		SILT SAND					10	STREAM			
320		SAND GRAVEL					10	STREAM			
321		FINE SAND					10	STREAM			
322		FINE SAND					10	STREAM			
323		FINE SAND					10	STREAM			
324		FINE SAND					10	STREAM			
325		FINE SAND					10	STREAM			
326		FINE SAND					10	STREAM			

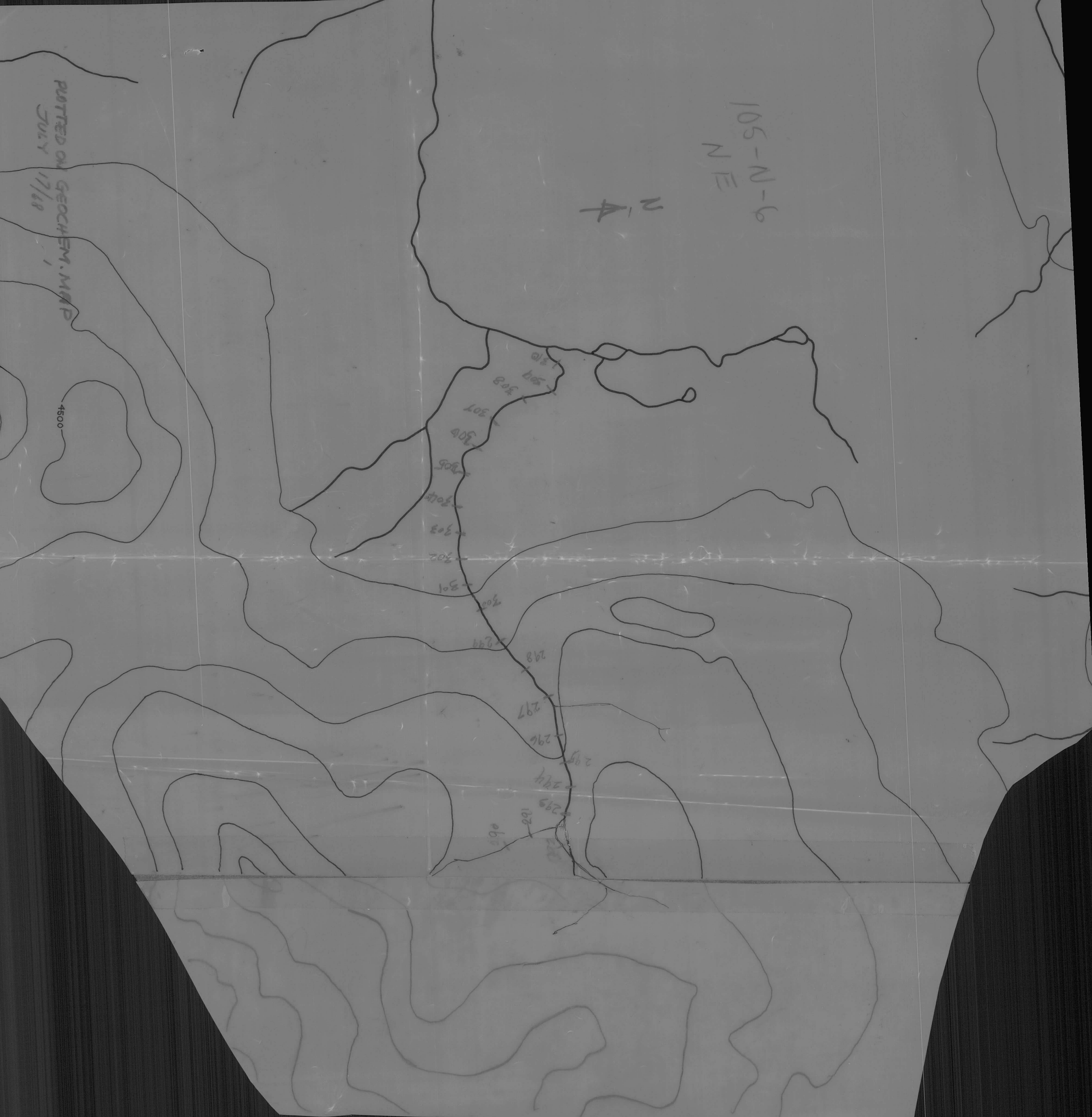
PUTTED ON GEOCHEM. MAP
JULY 17/68

105-N-6
NE

21A

308
307
306
305
304
303
302
301
299
298
297
296
295
294
293
102
065

4500



ATLAS EXPLORATIONS LIMITED

GEOCHEMICAL STREAM SEDIMENT SURVEY DATA

SAMPLER SAM MCLEOD

PHOTO NUMBER

DATE JULY 6 1968

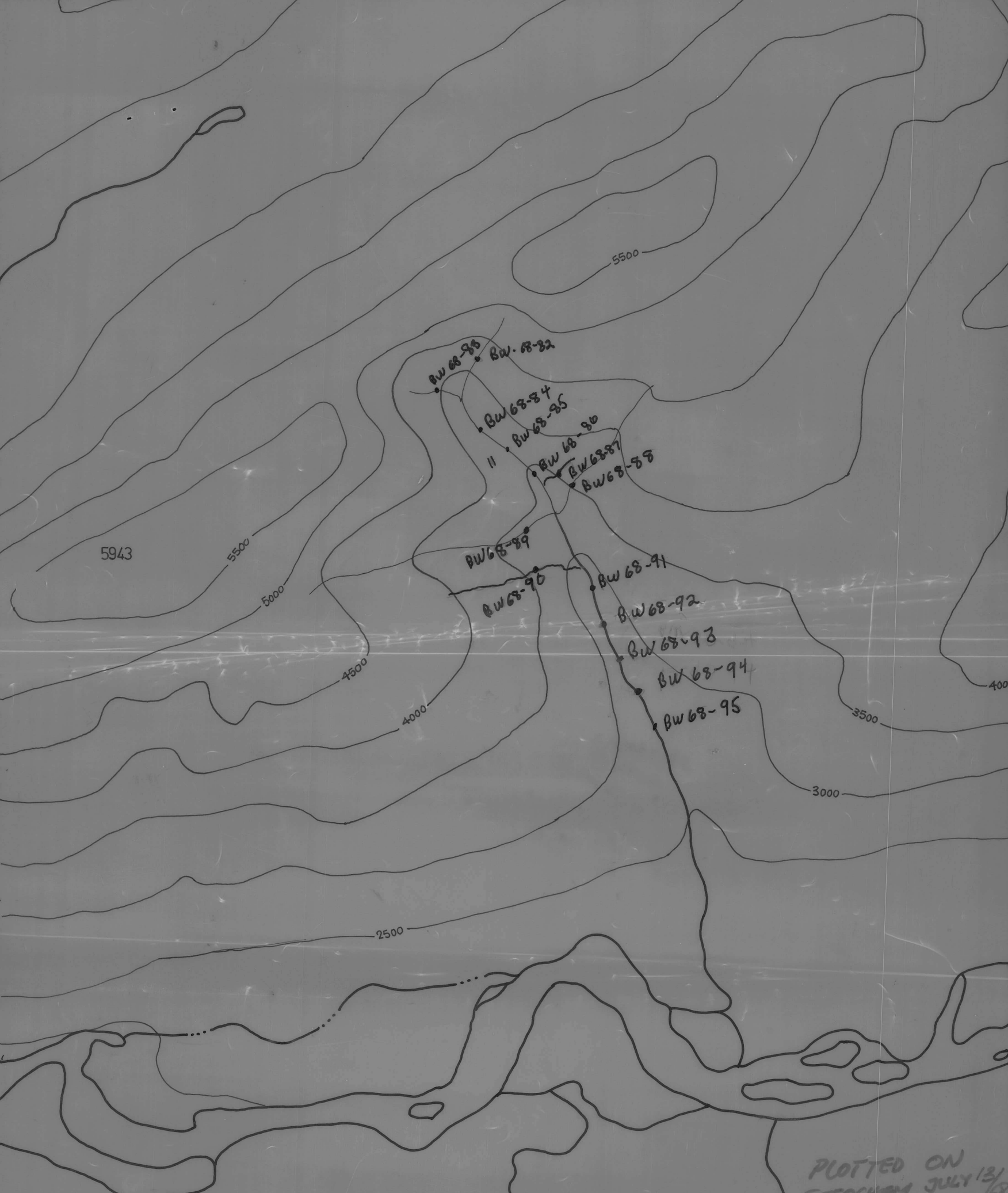
Office Use Only

Map

Date Plotted

Plotter

Sample No.	Quartz P or A	Gossan or Min	Soil		Silt		Stream Width	Remarks	Analytical Results		
			Sand	Silt	Clay	Organic			Cu	Pb	Zn
290		SAND GRAVEL					4	FLOOD IN STREAM			
291		FINE SAND					10	STREAM			
292		SILT GRAVEL					10	STREAM			
293		SAND GRAVEL					10	STREAM			
294		SILT GRAVEL					10	STREAM			
295		FINE SAND					10	STREAM			
296		SAND GRAVEL					10	STREAM			
297		SAND GRAVEL					10	STREAM			
298		FINE SAND					10	STREAM			
299		FINE SAND					10	STREAM			
300		SAND GRAVEL					10	STREAM			
301		SAND GRAVEL					10	STREAM			
302		SAND GRAVEL					10	STREAM			
303		FINE SAND					10	STREAM			
304		FINE SAND					10	STREAM			
305		FINE SAND					10	STREAM			



PLOTTED ON
GEOCHEM JULY 13/68

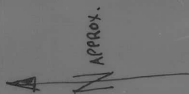
BILL WAUGH GEO CHEM JULY 1-68

105-N-6

9



PLOTTED ON GEOLOGIC MAP
AUG. 14/68 ϕ .

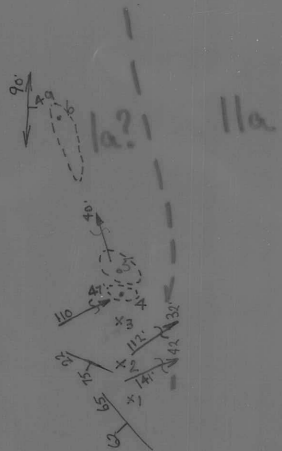


105-N-6.

GEO. TRAVERSE
AUG. 5, 1968.
PHIL CLARIDGE

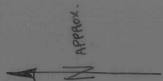
SAMPLES COLLECTED:
PC-68-145 → PC-68-161.

A12203-440



105-N-6.

PLOTTED ON GEOLOGIC MAP
AUGUST 14/68



GEOLOGY TRAVERSE
AUGUST 4, 1968.
PHIL CLARIDGE

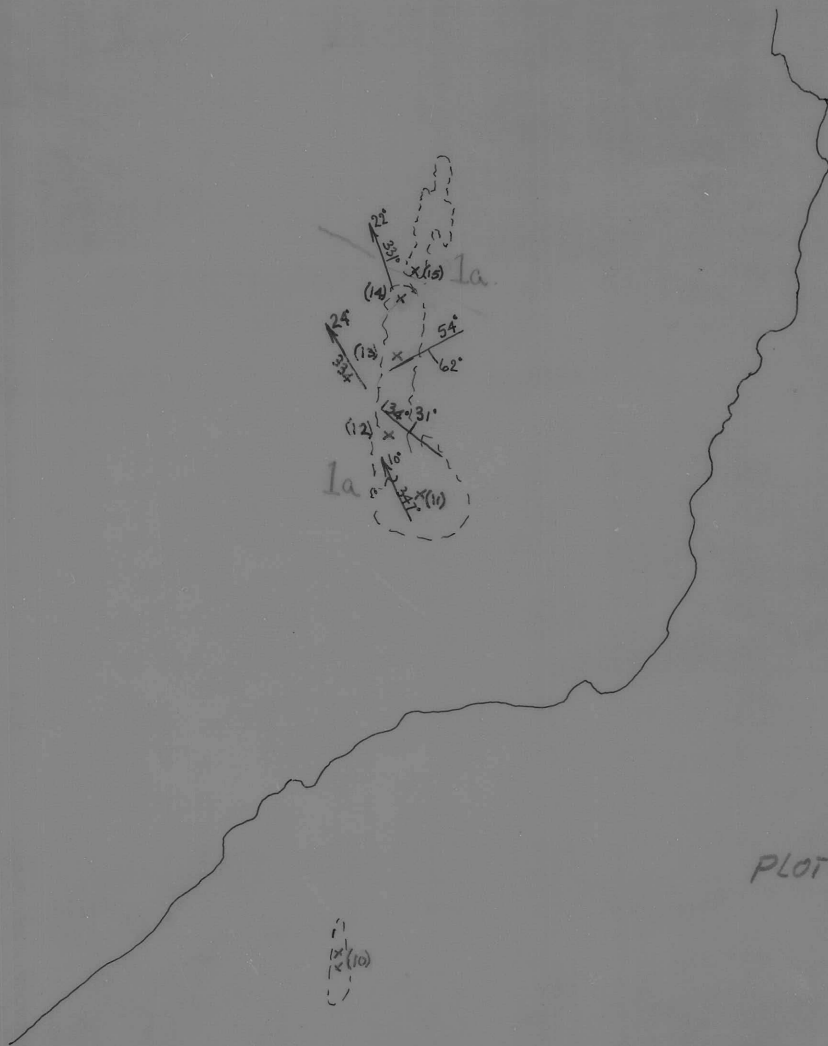
SAMPLES COLLECTED
PC-68-141 → PC-68-144.

♯.

412203-439

A12339-326

Geology Traverse
July 7, 1968.
Phil Claridge



PLOTTED ON GEOLOGY MAP
JULY 14/68 ϕ .

105-N-6
NORTH

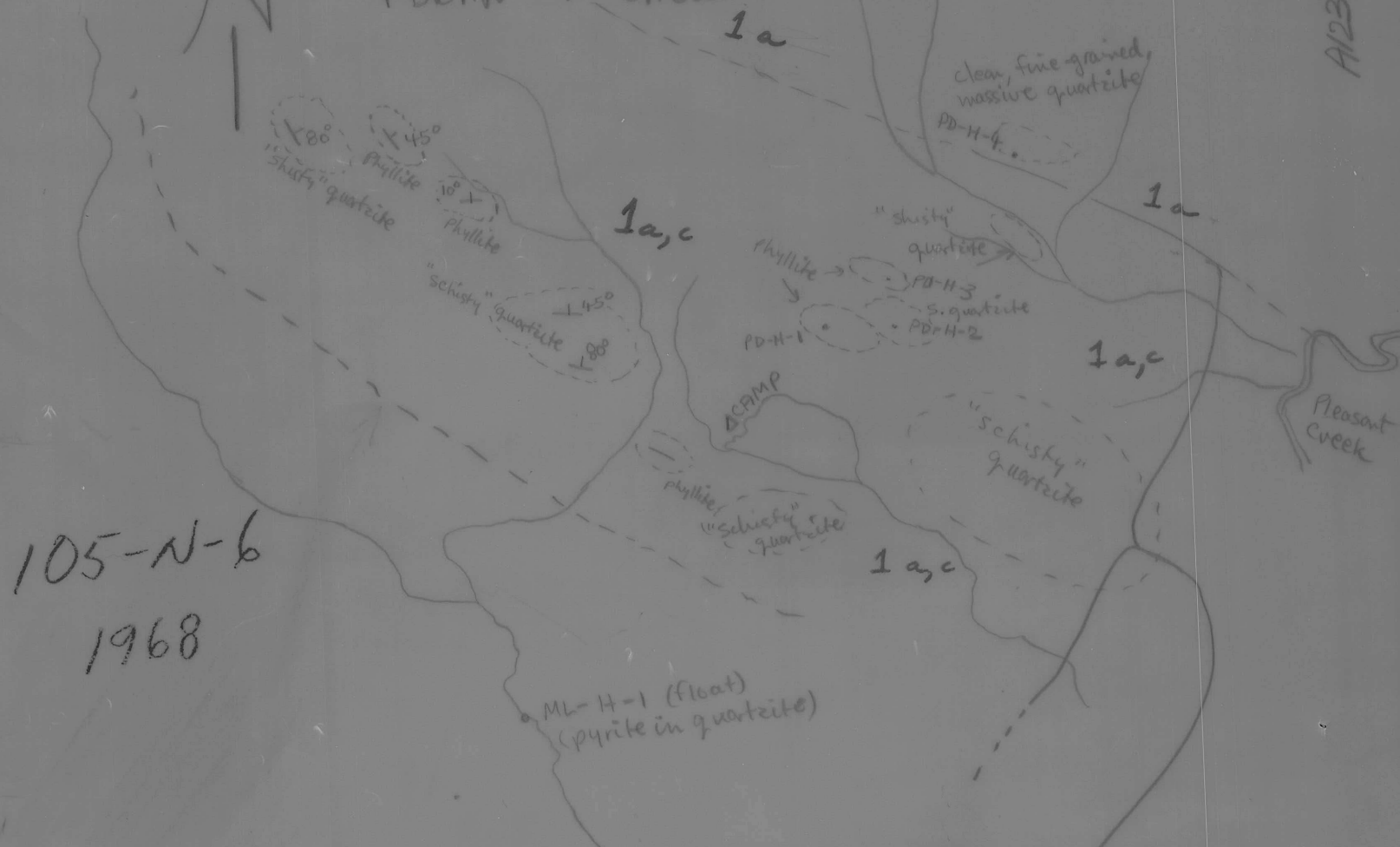
Rock Sample Locations:

CINARA LAKE CAMP

7 July → 10 July 1968

P. DEAN & M. LADUE

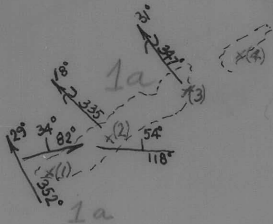
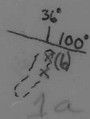
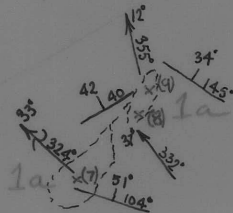
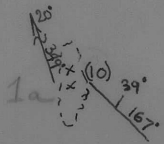
AI2339-3/2



105-N-6
1968

Rock Specimens are numbered PD-H-1, 2, 3, etc.

impure quartzite exhibiting extreme schistosity, interbedded with phyllites or containing zones of phyllite. (see spec PD-H-2)



A12339-324

Geology Traverse
July 7, 1968.
Phil Claridge

PLOTTED ON GEOLOGY
MAP, JULY 14/68

105-N-6