

JUNE 23/69

CHERT PEBBLE  
ENCRUSTED  
CONGLOMERATE

-201

-202

203

-204

018084



Zone 55/6d

MISSISSIPPI RIVER

190

191

192

89

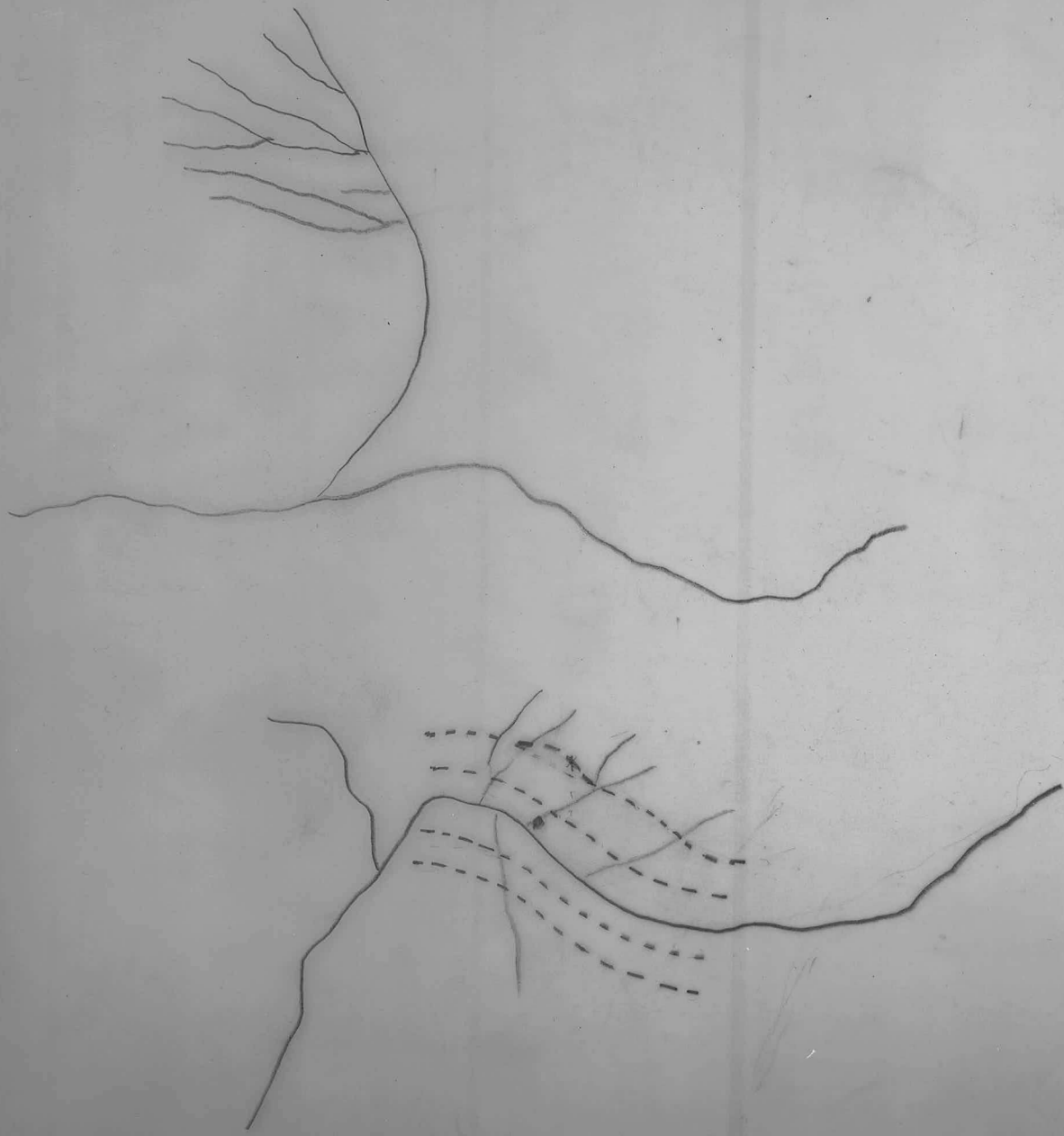
no

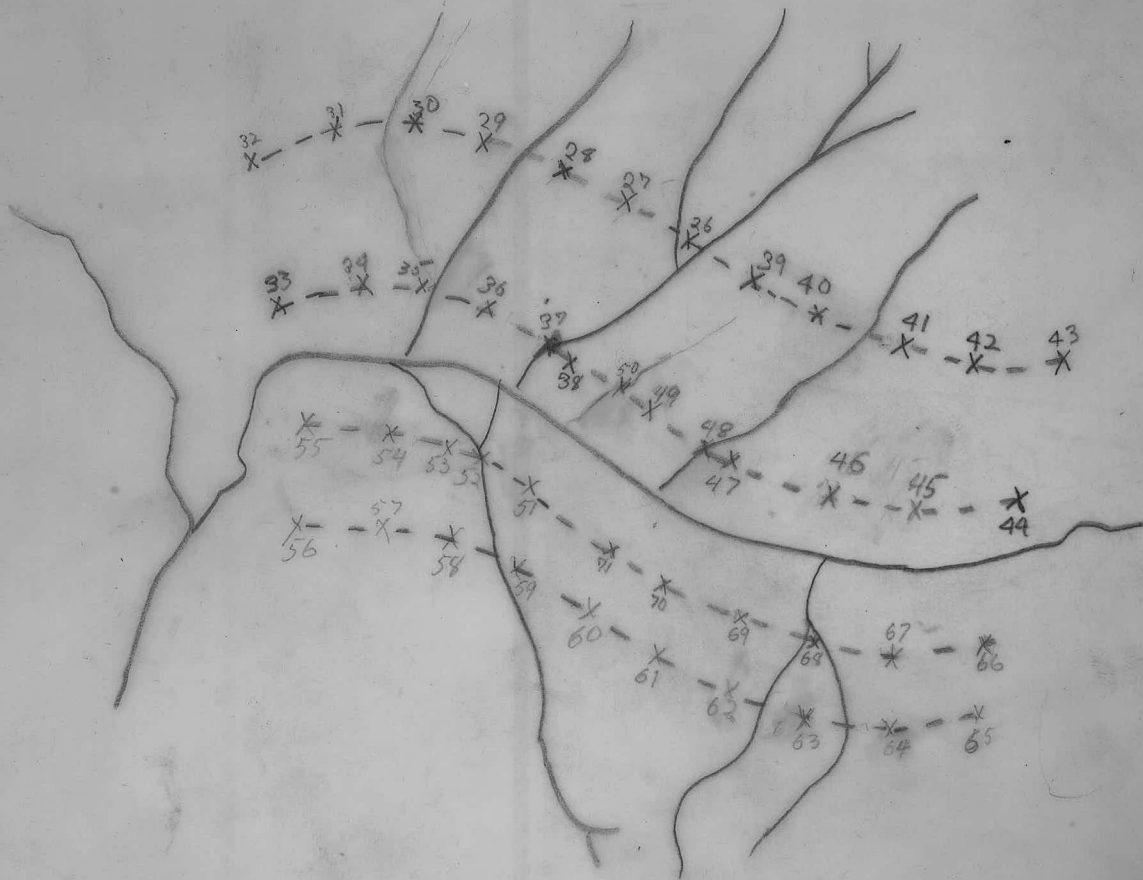
A12251 929 SE

JUNE 22/69

↑  
N

A12260-53





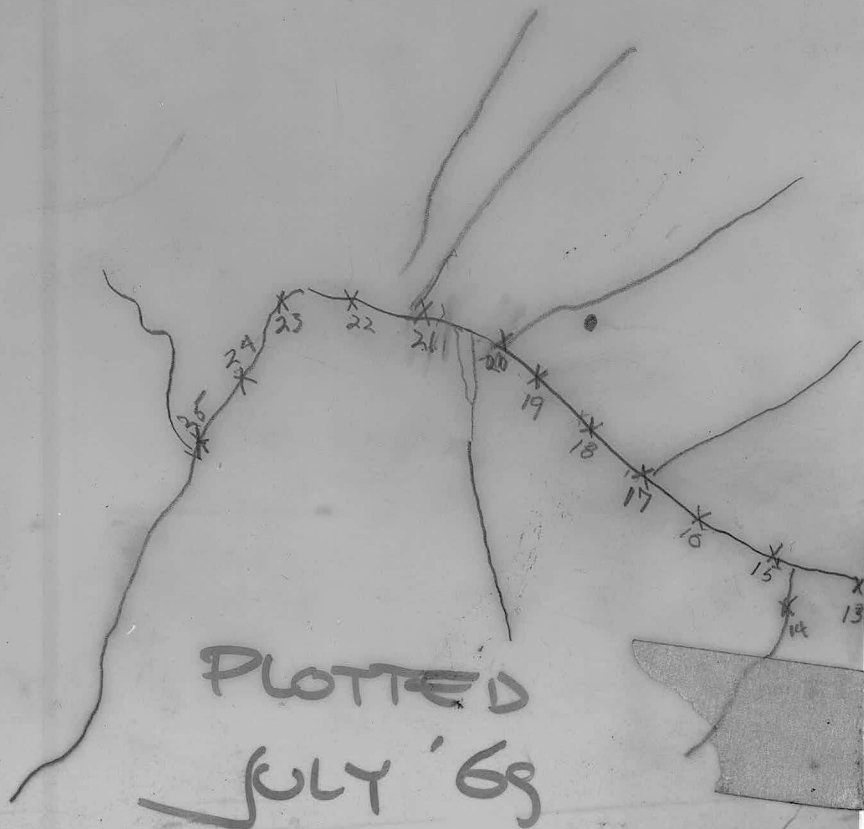
1" =  $\frac{1}{4}$  MILE.

PLOTTED  
JULY '69

BOB GROUP  
BASE MAP

NW

A12260-54



PLOTTED

JULY '69

MS 69  
JUNE 22/69

NE

A12260-54



PLOTTED  
JULY '69

JUNE 22/69

MS 69

NW  
JUNE 23/69.

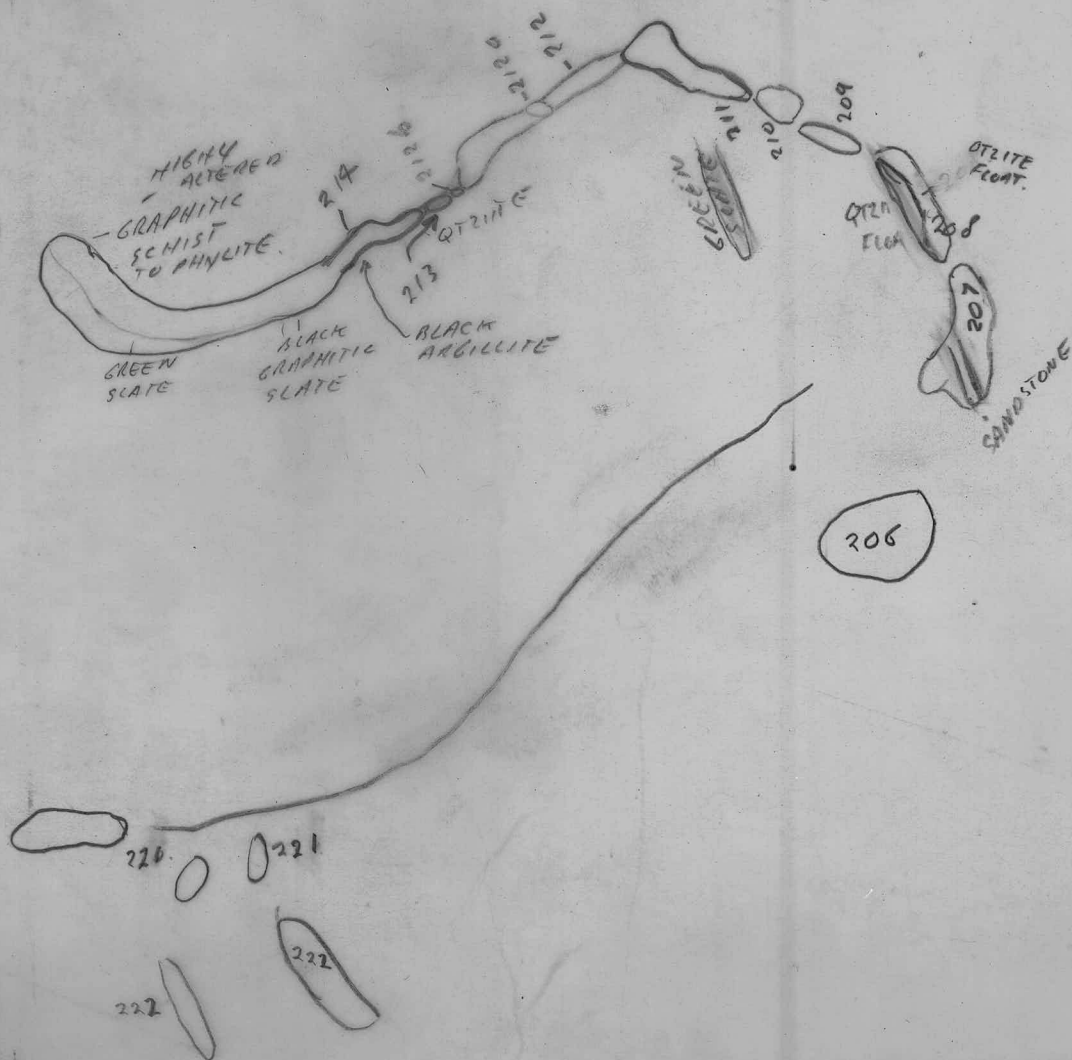


NE

A12260-54

JUNE 27/69

JUNE 25/69



130  
+  
COSSAN  
- 124  
COSSAN

A12260-54

SW

JUNE 25/69.

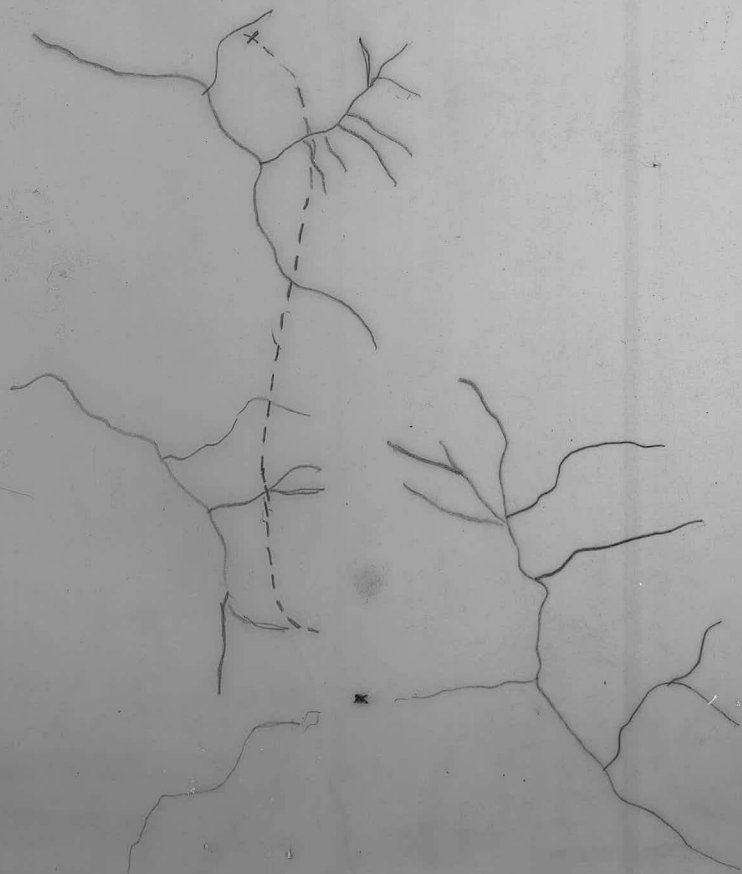
A12260-54

NW

JUNE 24/69

JUNE 25/69





A12321-72

ATLAS EXPLORATIONS LIMITED

GEOCHEMICAL STREAM SEDIMENT SURVEY DATA

SAMPLER. *Mike Sharty* .....

PHOTO NUMBER. *A12260-59-NE* .....

DATE. *June 22<sup>nd</sup>/69* .....

Office Use Only		
Map.....		
Date Plotted.....		
Plotter.....		

*SILT*

Sample No.	Quartz P or A	Gossan or Min	soil		<u>Silt</u>		Stream Width	Remarks	Analytical Results		
			Sand	Silt	Clay	Organic			Cu	Pb	Zn
<i>MS-1</i>			<i>SAND</i>								
<i>MS-2</i>					<i>CLAY</i>						
<i>MS-3</i>					<i>CLAY</i>						
<i>MS-4</i>			<i>SAND</i>								
<i>MS-5</i>			<i>SAND</i>								
<i>MS-6</i>			<i>SAND</i>								
<i>MS-7</i>			<i>SAND</i>								
<i>MS-8</i>				<i>SILT</i>							
<i>MS-9</i>				<i>SILT</i>							
<i>MS-10</i>			<i>SAND</i>								
<i>MS-11</i>			<i>SAND</i>								
<i>MS-12</i>			<i>SAND</i>								
<i>MS-13</i>			<i>SAND</i>								
<i>MS-14</i>					<i>CLAY</i>						
<i>MS-15</i>			<i>SAND</i>								
<i>MS-16</i>				<i>SILT</i>							



ATLAS EXPLORATIONS LIMITED

GEOCHEMICAL STREAM SEDIMENT SURVEY DATA

SAMPLER *Mike Stutz* .....

PHOTO NUMBER .....

DATE *June 23/1969* .....

Office Use Only		
Map.....		
Date Plotted.....		
Plotter.....		

Sample No.	Quartz P or A	Gossan or Min	Soil		Silt		Stream Width	Remarks	Analytical Results		
			Sand	Silt	Clay	Organic			Cu	Pb	Zn
MS-26			CLAY								
MS-27			CLAY								
MS-28			CLAY								
MS-29			CLAY								
MS-30			CLAY								
MS-31			CLAY								
MS-32			CLAY								
MS-33			CLAY								
MS-34			CLAY								
MS-35			CLAY								
MS-36			CLAY								
MS-37					SILT						
MS-38			CLAY								
MS-39			CLAY								
MS-90			CLAY								
MS-91			CLAY								





