

+
Camp #2

+

Camp #1 GS+PC
 G Sanford geochem samples

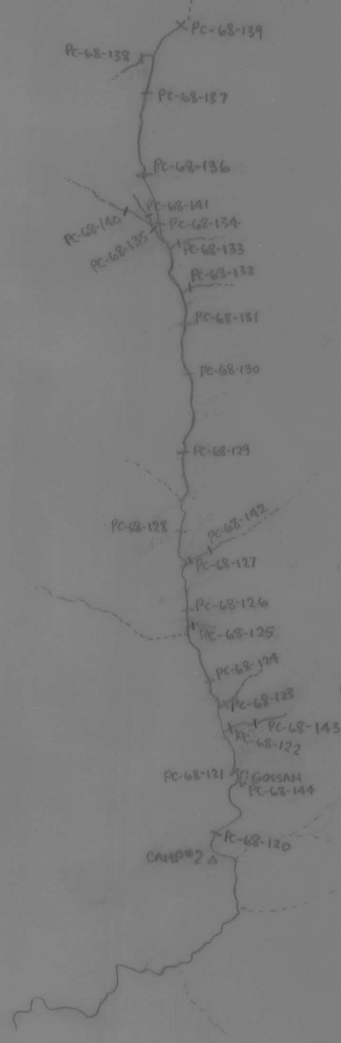


LOS-N-9.

A12326-2

018129

77



GEOCHEM
PHIL CLARIDGE
JUNE 16, 1968.

PLOTTED ON GEOCHEM MAP
JULY '68

605-N-9

A12251 - 425

ATLAS EXPLORATIONS LIMITED

GEOCHEMICAL STREAM SEDIMENT SURVEY DATA

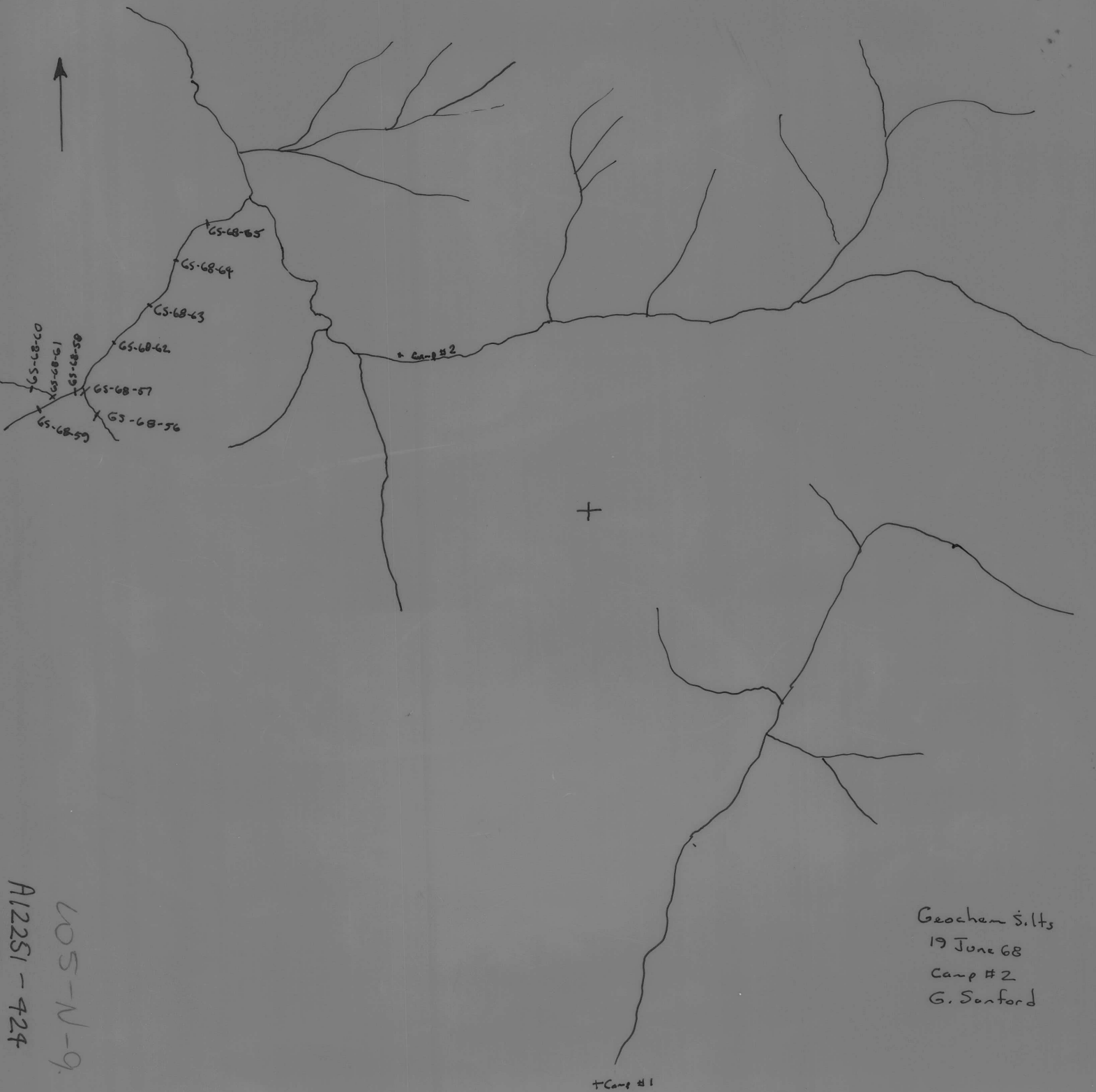
SAMPLER... Philip Claidge

PHOTO NUMBER... A.12251-425

DATE... June 16, 1968

Office Use Only		
Map.....		
Date Plotted.....		
Plotter.....		

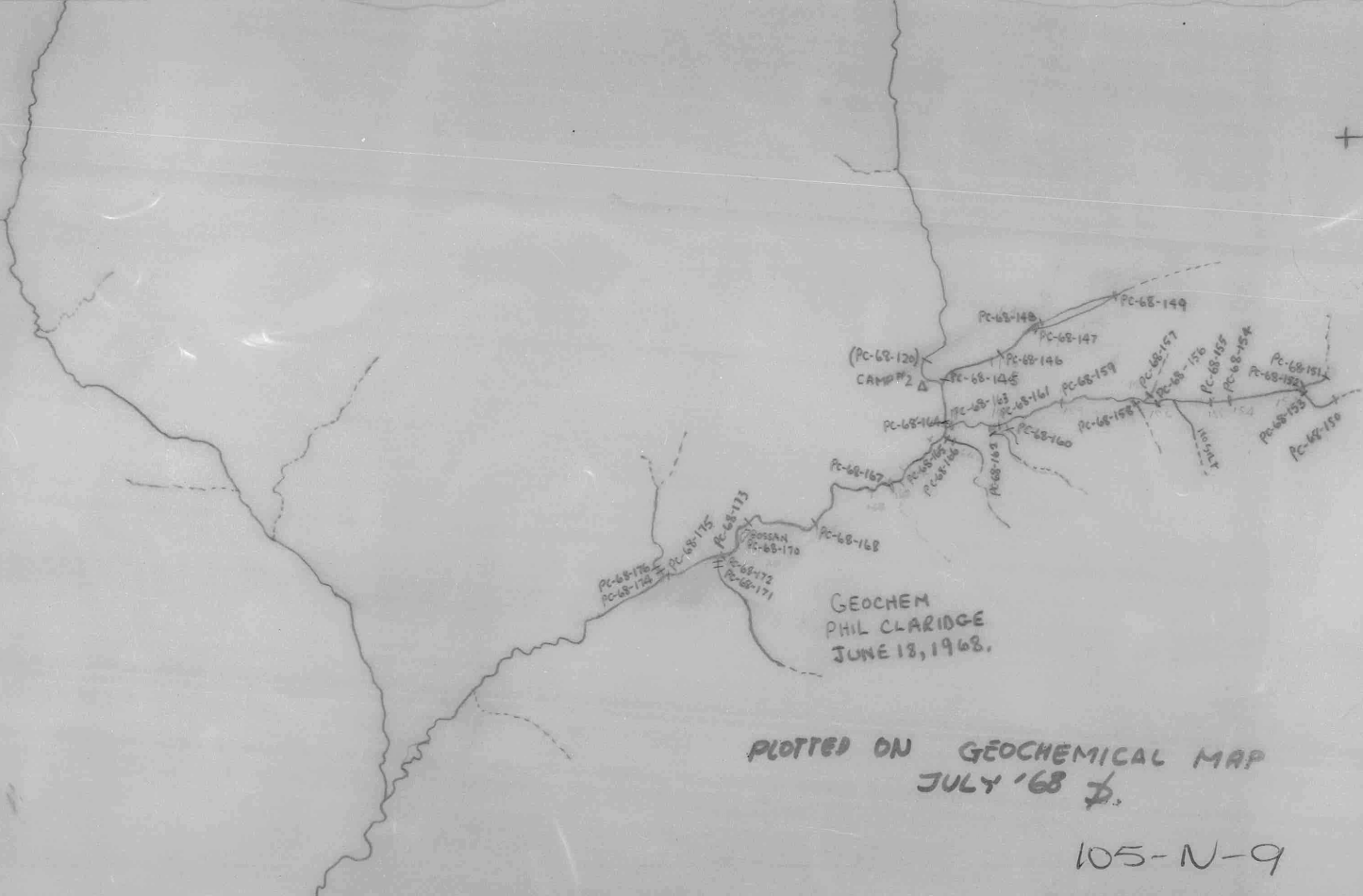
Sample No.	Quartz P or A	Gossan or Min	Soil		Silt		Stream Width	Remarks	Analytical Results		
			Sand	Silt	Clay	Organic			Cu	Pb	Zn
PC-68-120	P	NIL	STREAM				9'	quite a bit of slate in stream gravels.			
PC-68-121	P	NIL		STREAM.			9'	many rusty boulders in stream.			
PC-68-122	A	NIL	STREAM				6"	some organic material present in silts.			
PC-68-123	A	NIL		STREAM.			1'				
PC-68-124		NIL	STREAM				10'	RUSTY BOULDERS IN STREAM			
PC-68-125	A	NIL		STREAM.			3"	SEEPAGE.			
PC-68-126	P	NIL	STREAM.				9'				
PC-68-127	A	NIL		STREAM			6"				
PC-68-128	P	NIL	STREAM				8'	NOT MUCH SILT PRESENT HERE.			
PC-68-129		NIL	STREAM				6'	NOT MUCH SILT PRESENT.			
PC-68-130		NIL	STREAM				6'				
PC-68-131	A	NIL	STREAM				7'				
PC-68-132	P	NIL	STREAM				1'	TRIBUTARY.			
PC-68-133	A	NIL		STREAM			1'	Some organic material present.			
PC-68-134	A	NIL	STREAM				5'				
PC-68-135	A	NIL	STREAM				6'				



Geochem S.lts
19 June 68
Camp #2
G. Sanford

W05-N-9.
A12251-724

+ Camp #1



(PC-68-120)
CAMP #2

PC-68-176
PC-68-174

PC-68-175

PC-68-173

ROSEAN
PC-68-170

PC-68-172
PC-68-171

PC-68-167

PC-68-168

PC-68-169

PC-68-165

PC-68-161

PC-68-159

PC-68-149

PC-68-147

PC-68-146

PC-68-157

PC-68-156

PC-68-158

PC-68-154

PC-68-151

PC-68-152

PC-68-153

PC-68-150

GEOCHEM
PHIL CLARIDGE
JUNE 18, 1968.

PLOTTED ON GEOCHEMICAL MAP
JULY '68

105-N-9

A12251-425

↑ N

1 mi to
Rogge R.

PC-68-191
PC-68-186
PC-68-190
PC-68-188
PC-68-189
PC-68-184
SOSCAN
PC-68-183
PC-68-182
PC-68-181
PC-68-180
PC-68-179
PC-68-178
PC-68-177
PC-68-176
PC-68-175
PC-68-171

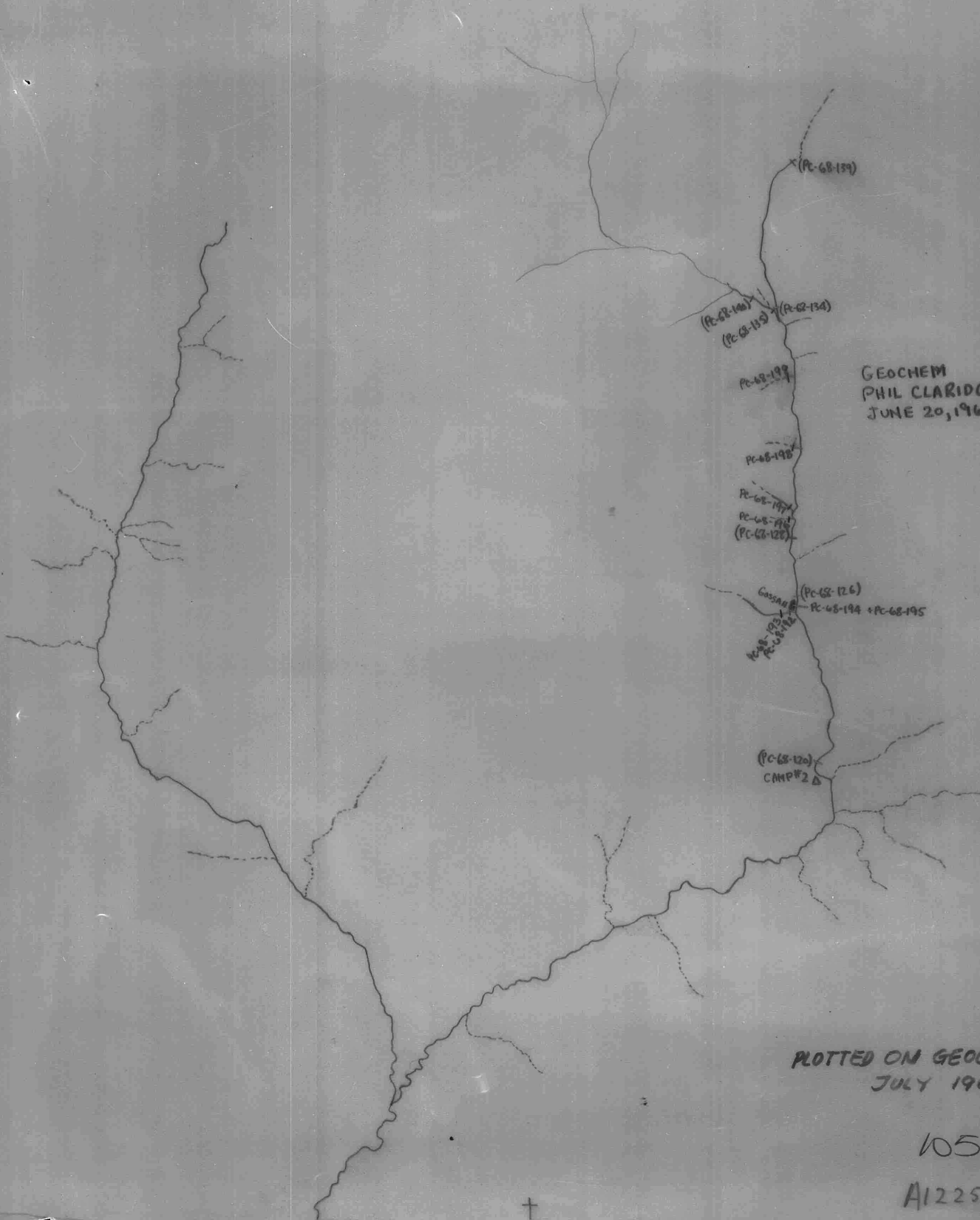
GEOCHEM
PHIL CLARIDGE
JUNE 19, 1968.

(PC-68-140)
(PC-68-135)
PC-68-154
(PC-68-125)
(PC-68-126)
(PC-68-130)
CAMP #2

PLOTTED ON GEOCHEM. MAP
JULY '68

W5-N-9.

A12251-425



GEOCHEM
PHIL CLARIDGE
JUNE 20, 1968.

PLOTTED ON GEOCHEMICAL MAP
JULY 1968 ♀.

105-N-9.

A12251 - 425

ATLAS EXPLORATIONS LIMITED

GEOCHEMICAL STREAM SEDIMENT SURVEY DATA

SAMPLER... *Philip Clavidge*

PHOTO NUMBER... *A12251-425*

DATE... *June 18/68*

Office Use Only		
Map.....		
Date Plotted.....		
Plotter.....		

Sample No.	Quartz P or A	Gossan or Min	Soil		Silt		Stream Width	Remarks	Analytical Results		
			Sand	Silt	Clay	Organic			Cu	Pb	Zn
C-68-145	P	NIL	STREAM				2'		30		95
PC-68-146	P	NIL	STREAM				2'	<i>quite a lot of slate fragments in stream bed.</i>	23		116
PC-68-147	P	NIL		STREAM			1'		28		141
PC-68-148	A	NIL	STREAM				1'		28		100
PC-68-149	P	NIL		STREAM			2'		16		59
PC-68-150	A	NIL		STREAM			2'		23		210
PC-68-151	P	NIL		STREAM			1'	<i>STREAM RUNNING OVER SLATE TALUS.</i>	460		420
PC-68-152	P	NIL	STREAM				1'	<i>some intrusive rocks in stream bed.</i>	460		380
C-68-153	A	NIL	STREAM				3'	<i>mostly slates present.</i>	28		270
PC-68-154	P	NIL	STREAM				4'	<i>no fine silts present.</i>	197		450
PC-68-155	P	NIL	STREAM				4'		213		440
PC-68-156	P	NIL	STREAM				4'		162		490
PC-68-157	A	NIL		STREAM			6"	TRIBUTARY.	40		420
PC-68-158	P	NIL	STREAM				6"	TRIBUTARY.	21		104
PC-68-159	P	NIL	STREAM				3'		67		300
PC-68-160	P	NIL	STREAM				6"	TRIBUTARY.	15		42

ATLAS EXPLORATIONS LIMITED

GEOCHEMICAL STREAM SEDIMENT SURVEY DATA

SAMPLER Philip Claxton

PHOTO NUMBER A 12251-425

DATE June 18/68

Office Use Only		
Map.....		
Date Plotted.....		
Plotter.....		

Sample No.	Quartz P or A	Gossan or Min	Soil		Silt		Stream Width	Remarks	Analytical Results		
			Sand	Silt	Clay	Organic			Cu	Pb	Zn
PC-68-161	P.	NIL	STREAM				3'		55		360
PC-68-162	A	NIL		STREAM			8"	TRIBUTARY.	16		109
PC-68-163	P.	NIL	STREAM				4'		34		250
PC-68-164		NIL	STREAM				8'		25		204
PC-68-165	P	NIL		STREAM			1'		30		143
PC-68-166	P	NIL		STREAM			1'		34		138
PC-68-167	P	NIL		STREAM			14'		31		247
PC-68-168		NIL	STREAM				10'		31		247
PC-68-169	P	NIL		STREAM			10'		15		121
PC-68-170	A.	GOSSAN.		✓				GOSSAN OCCURS IN SWAMPY AREA BESIDE RIVER	18		114
PC-68-171	P.	NIL	STREAM				5'		23		245
PC-68-172	P	NIL		STREAM			5'		23		233
PC-68-173	P	NIL		STREAM			12'		9		170
PC-68-174	P	NIL	STREAM				2'		16		201
PC-68-175		NIL	STREAM				8'		30		245
PC-68-176	P	NIL	STREAM				1'		48		242

ATLAS EXPLORATIONS LIMITED

GEOCHEMICAL STREAM SEDIMENT SURVEY DATA

SAMPLER... *Philip Claridge*

PHOTO NUMBER... *A12251-425*

DATE... *June 19/68*

Office Use Only

Map.....

Date Plotted.....

Plotter.....

Sample No.	Quartz P or A	Gossan or Min	Soil		Silt		Stream Width	Remarks	Analytical Results		
			Sand	Silt	Clay	Organic			Cu	Pb	Zn
PC-68-177	P	NIL	STREAM				7'	sampled in swampy area.	28		297
PC-68-178	P	NIL	STREAM				8'		28		230
PC-68-179	P	NIL		STREAM			6"	seepage - some organic material present.	46		49
PC-68-180	A	Gossan		STREAM			6"	seepage into swamp gossan.	26		56
PC-68-181	P	NIL	STREAM				10'		28		235
PC-68-182	P	NIL	STREAM				10'	seepage into swamp gossan.	30		215
PC-68-183	A	Gossan						seepage into swamp gossan.	54		84
PC-68-184	A	NIL		STREAM			6"	seepage.	25		54
PC-68-185	P	NIL	STREAM				10'		28		212
PC-68-186	P	NIL	STREAM					a great deal of mud in stream bed.	182		242
PC-68-187	P	NIL	STREAM				15'	many rusty rocks in stream bed.	58		198
PC-68-188	P	NIL	STREAM				15'	many rusty rocks in stream bed.	70		230
PC-68-189	P	NIL	STREAM				15'	many rusty rocks in stream bed.	72		228
PC-68-190	P	NIL		STREAM			6"	seepage.	23		44
PC-68-191	P	NIL	STREAM				12'	many rusty rocks in stream bed.	160		178

↑
1" = 1/2 MI

PLOTTED ON GEOCHEM. MAP

AUGUST 24/68

Pete Dean

105-N-9

ATLAS EXPLORATIONS LIMITED

GEOCHEMICAL STREAM SEDIMENT SURVEY DATA

105-N-9

SAMPLER..... P. DEAN

PHOTO NUMBER..... Base Map

DATE..... 9 August 1968

Office Use Only

Map.....

Date Plotted.....

Plotter.....

Sample No.	Quartz P or A	Gossan or Min	Soil		Silt		Stream Width	Remarks	Analytical Results		
			Sand	Silt	Clay	Organic			Cu	Pb	Zn
D68-319	P		✓				1				
320	}		✓				1 1/2				
321			✓				2 1/2				
322					✓			1			
323				✓	✓			3			
324				✓	✓			3			
325				✓	✓			3			
326				✓	✓			3			
327				✓	✓			5			
328					✓			5			
329					✓			2 1/2			
330					✓			2 1/2			
331				✓	✓			5 1/2			
332					✓			1			
333								5 1/2			
334								3			

Geochron Silt Samples
16, 18 June 68
Camp #2
G. Sanford

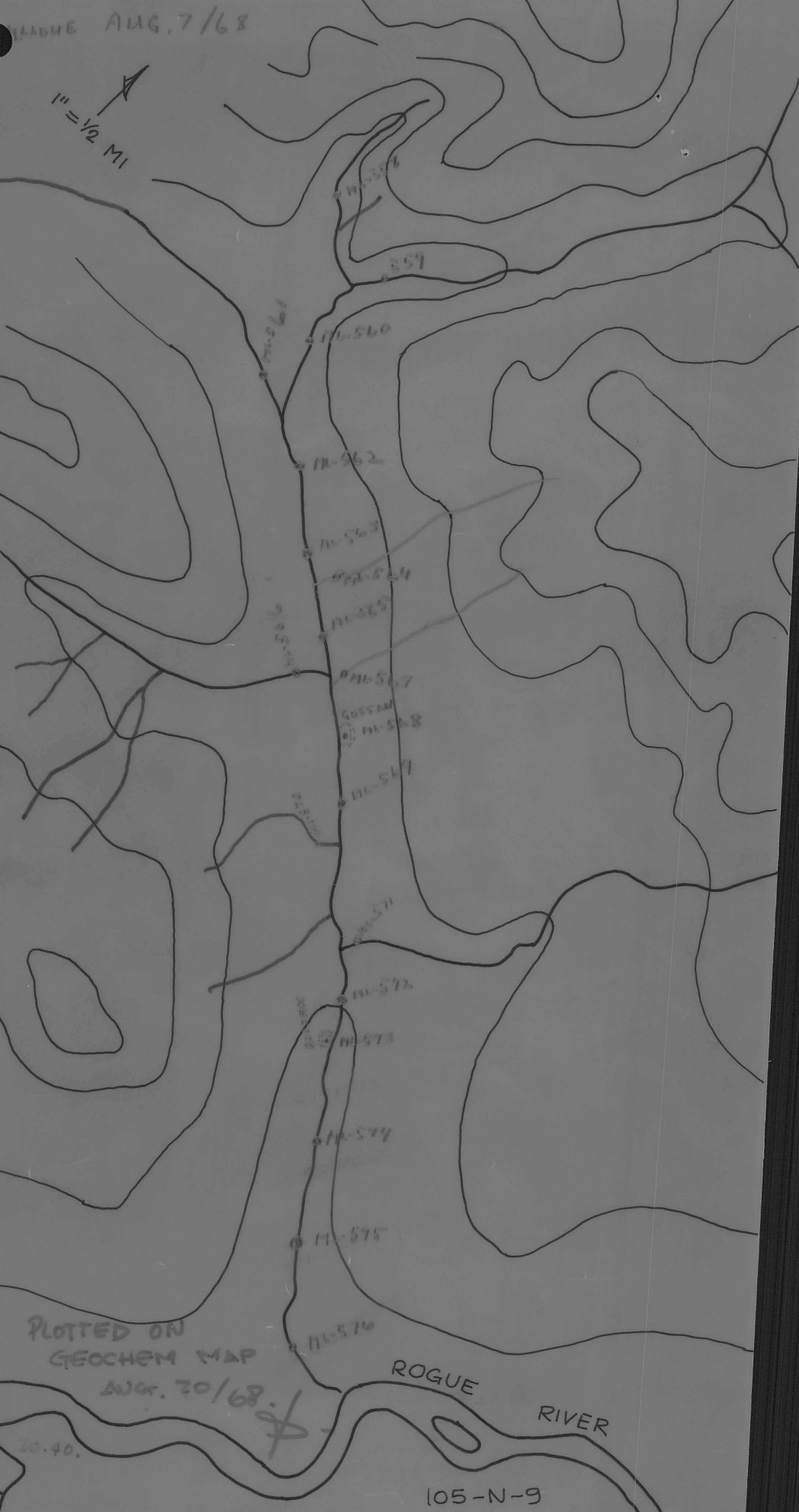


A 123 51-426

105-N-9

PLADUE AUG. 7/68

1" = 1/2 MI



PLOTTED ON
GEOCHEM MAP
AUG. 20/68

ROGUE
RIVER

105-N-9

ATLAS EXPLORATIONS LIMITED

GEOCHEMICAL STREAM SEDIMENT SURVEY DATA

SAMPLER. MARK... LADUE.....

PHOTO NUMBER.....

DATE... 7... AUG... 1968...

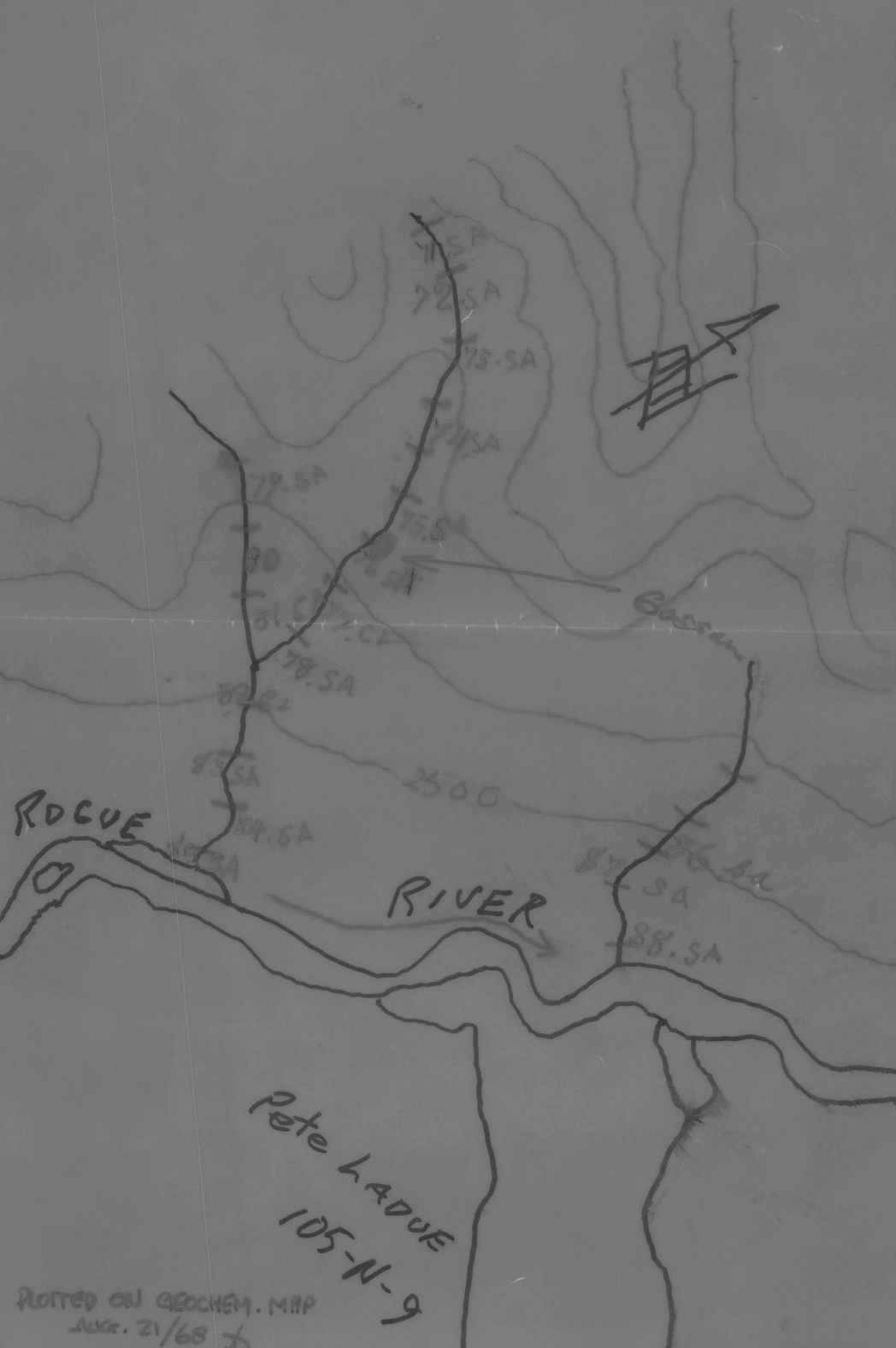
Office Use Only

Map.....

Date Plotted.....

Plotter.....

Sample No.	Quartz P or A	Gossan or Min	Soil		Silt		Stream Width	Remarks	Analytical Results		
			Sand	Silt	Clay	Organic			Cu	Pb	Zn
558				✓			4				
559				✓			6				
560				✓			7				
561				✓			6				
562				✓			9				
563				✓			10				
564				✓			4				
565				✓			10				
566				✓			6				
567				✓			3				
568				✓			GOSSAN				
569				✓			10				
570				✓			3				
571				✓			6				
572				✓			12				
573				✓			GOSSAN				



Pete LADUE
105-N-9

PLOTTER ON GEOCHEM. MAP
AUG. 21/68

ATLAS EXPLORATIONS LIMITED

GEOCHEMICAL STREAM SEDIMENT SURVEY DATA

SAMPLER... *Pete LAQUE*

PHOTO NUMBER.....

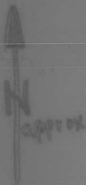
DATE... *Aug 8 / 68*

Silts 105-N-9

<u>Office Use Only</u>		
Map.....		
Date Plotted.....		
Plotter.....		

Sample No.	Quartz P or A	Gossan or Min	Soil		Silt		Stream Width	Remarks	Analytical Results		
			Sand	Silt	Clay	Organic			Cu	Pb	Zn
<i>PL-68-71</i>			✓								
<i>72</i>			✓								
<i>73</i>			✓								
<i>74</i>			✓								
<i>75</i>			✓								
<i>76</i>		✓	✓								
<i>77</i>					✓						
<i>78</i>			✓								
<i>79</i>			✓								
<i>80</i>			✓								
<i>81</i>			✓								
<i>82</i>					✓						
<i>83</i>			✓								
<i>84</i>			✓								
<i>85</i>			✓								
<i>86</i>			✓								
<i>87</i>			✓								
<i>88</i>			✓								

Small Creek {



PC-68-292
PC-68-291
PC-68-287

PC-68-288
PC-68-289

PC-68-286

PC-68-285

PC-68-284

PC-68-283

PC-68-282

PC-68-281

PC-68-275

PC-68-272

PC-68-268

PC-68-268

PC-68-266

PC-68-264

PC-68-264

PC-68-259

PC-68-258

PC-68-256

PC-68-257

PC-68-262

Geochem Sampling
July 20/68.
Phil Claridge

PLOTTED ON GEOCHEM. MAP
JULY 29/68

LOS-N-9

ATLAS EXPLORATIONS LIMITED

GEOCHEMICAL STREAM SEDIMENT SURVEY DATA

SAMPLER... *Phil Claridge*

PHOTO NUMBER.....

DATE... *July 20/68*

Office Use Only		
Map.....		
Date Plotted.....		
Plotter.....		

Sample No.	Quartz P or A	Gossan or Min	Soil		Silt		Stream Width	Remarks	Analytical Results		
			Sand	Silt	Clay	Organic			Cu	Pb	Zn
68-250	P	NIL	STREAM				1'	slates + chert in stream bed			
251	P	NIL	STREAM				1'	as above			
252	P	NIL		STREAM			18"	as above			
253	P	NIL		STREAM			18"	as above.			
254	P	NIL		STREAM			3'	as above			
255	P	NIL		STREAM			3'	as above.			
256	P	NIL		STREAM			3'	some intrusive boulders			
257	P	NIL	STREAM				1'	very little silt present.			
258	P	NIL		STREAM			4'				
259	P	NIL	STREAM				3'	in area are black chert, black + grey slate, etc.			
Pc-68-260	P	NIL	STREAM				3'				
261	P	NIL	STREAM				4'	a.c of grey bedded chert nearby.			
262	P	NIL	STREAM				5'	some intrusive boulders in creek here.			
263	P	NIL	STREAM				6'				
264	P	NIL	STREAM				2'				
265	P	NIL	STREAM				18"				

ATLAS EXPLORATIONS LIMITED

GEOCHEMICAL STREAM SEDIMENT SURVEY DATA

SAMPLER *Phil Clouty*

PHOTO NUMBER

DATE *July 20/68*

Office Use Only		
Map.....		
Date Plotted.....		
Plotter.....		

Sample No.	Quartz P or A	Gossan or Min	Soil		Silt		Stream Width	Remarks	Analytical Results		
			Sand	Silt	Clay	Organic			Cu	Pb	Zn
<i>68-266</i>	<i>P</i>	<i>NIL</i>	<i>STREAM</i>				<i>5'</i>				
<i>267</i>	<i>P</i>	<i>NIL</i>	<i>STREAM</i>				<i>1'</i>				
<i>268</i>	<i>P</i>	<i>NIL</i>	<i>STREAM</i>				<i>6'</i>				
<i>269</i>	<i>P</i>	<i>NIL</i>	<i>STREAM</i>				<i>7'</i>				
<i>Pc-68-270</i>	<i>P</i>	<i>NIL</i>	<i>STREAM</i>				<i>4'</i>				
<i>271</i>	<i>P</i>	<i>NIL</i>	<i>STREAM</i>				<i>3'</i>				
<i>272</i>	<i>P</i>	<i>NIL</i>	<i>STREAM</i>				<i>7'</i>				
<i>273</i>	<i>P</i>	<i>NIL</i>		<i>STREAM</i>			<i>1'</i>				
<i>274</i>	<i>P</i>	<i>NIL</i>	<i>STREAM</i>				<i>1'</i>				
<i>275</i>	<i>P</i>	<i>NIL</i>		<i>STREAM</i>			<i>8'</i>				
<i>276</i>	<i>P</i>	<i>NIL</i>	<i>STREAM</i>				<i>1'</i>	<i>dry creek bed.</i>			
<i>277</i>	<i>P</i>	<i>NIL</i>	<i>STREAM</i>				<i>6'</i>				
<i>278</i>	<i>P</i>	<i>NIL</i>	<i>STREAM</i>				<i>6'</i>				
<i>279</i>	<i>P</i>	<i>NIL</i>	<i>STREAM</i>				<i>2'</i>				
<i>Pc-68-280</i>	<i>P</i>	<i>NIL</i>	<i>STREAM</i>				<i>2'</i>				
<i>281</i>	<i>P</i>	<i>NIL</i>		<i>STREAM</i>			<i>6'</i>				

FROM

Tim Coates

DEPARTMENT

Hess OEX

DATE

Sept. 27, 68

SUBJECT

Bob Group; samples
for rock-geochemistryGeneral information

105-N-9

S
E
N
D
T
O

MESSAGE

The enclosed information regards samples collected by Tim Coates and Tom Adamson during the course of a three hour visit to the Bob Group, Sept. 26/68. Locations are indicated on the accompanying sketch.

- BRG-1 ----- green-gray, calcareous argillite, smallqtz. veins
orange-brown weathered surface.
- BRG-2 ----- gray-green slaty argillite; not calcareous
- BRG-3 ----- gray chert
- BRG-4 ----- gray-black chert and minor graphitic argillite
- BRG-5 ----- gray-black chert
- BRG-6 ----- slaty gray argillite
- BRG*7 ----- slaty gray argillite
- BRG-8 ----- gray slate
- BRG-9 ----- gray slate
- BRG-10 ----- black chert, cherty carbonaceous argillite with
quartz-carbonate veinlets
- BRG-11 ----- pitted gray-black chert; minor argillite
- BRG-12 ----- gray slate
- BRG-13 ----- gray slate
- BRG-14 ----- black chert, cherty graphitic argillite
- BRG-15 ----- light gray chert
- BRG-16 ----- light gray to medium gray chert (low carbon content)
- BRG-17 ----- medium-grained carbonaceous quartzite; networks of
quartz-carbonate veinlets
- BRG-18 ----- vfg mafic dike; dark green
- BRG-19 ----- chert-pebble conglomerate
- BRG-20 ----- graphitic slate

In most cases, duplicate specimens have been collected for reference purposes.

USE LOWER PORTION FOR REPLY

REPLY FROM

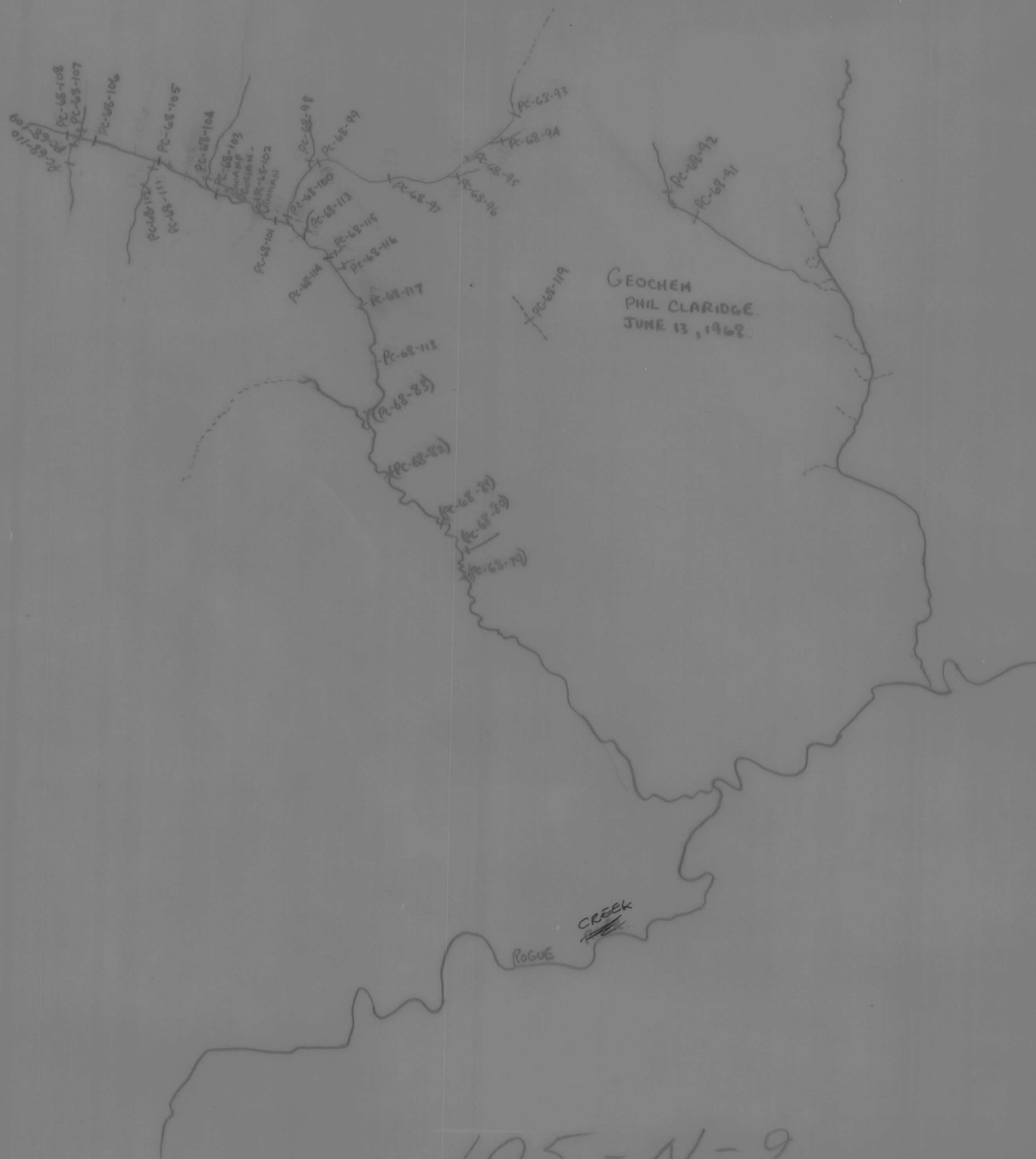
DATE



—

3

109



A 12326-3

105-N-9
Plotted

PLOTTED

F. July 1/68

ATLAS EXPLORATIONS LIMITED

GEOCHEMICAL STREAM SEDIMENT SURVEY DATA

SAMPLER Philip Clardge.....

PHOTO NUMBER A-12326-3...

DATE June 10, 1968.....

Office Use Only		
Map.....		
Date Plotted.....		
Plotter.....		

Sample No.	Quartz P or A	Gossan or Min	Soil		Silt		Stream Width	Remarks	Analytical Results		
			Sand	Silt	Clay	Organic			Cu	Pb	Zn
PC-68-67	P	NIL	STREAM				1'	TRIBUTARY.	18		590
PC-68-68		NIL		STREAM			1'	TRIBUTARY	8		630
PC-68-69	P	NIL		STREAM			10'		10		245
PC-68-70	P	NIL		STREAM			8'		13		320
PC-68-71	A	NIL		STREAM.			1'	TRIBUTARY.	N.D.		330
PC-68-72	A	NIL		STREAM.			1'	TRIBUTARY	13		440
PC-68-73	A	NIL		STREAM.			6"	TRIBUTARY.	63		62
PC-68-74	P	NIL	STREAM				10'		30		360
PC-68-75	A	NIL	STREAM				1'	TRIBUTARY.	23		330
PC-68-76	A	NIL		STREAM			18"	TRIBUTARY.	2		79
PC-68-77	P	NIL	STREAM				8'		15		280
PC-68-78	D	NIL	STREAM				12'		9		270
PC-68-79	P	NIL	STREAM				18'		31		430
PC-68-80	P	NIL		STREAM			1'	TRIBUTARY.	23		190
PC-68-81	P	NIL	STREAM				15'		40		440
PC-68-82	P	NIL		STREAM			13'		58		184

ATLAS EXPLORATIONS LIMITED

GEOCHEMICAL STREAM SEDIMENT SURVEY DATA

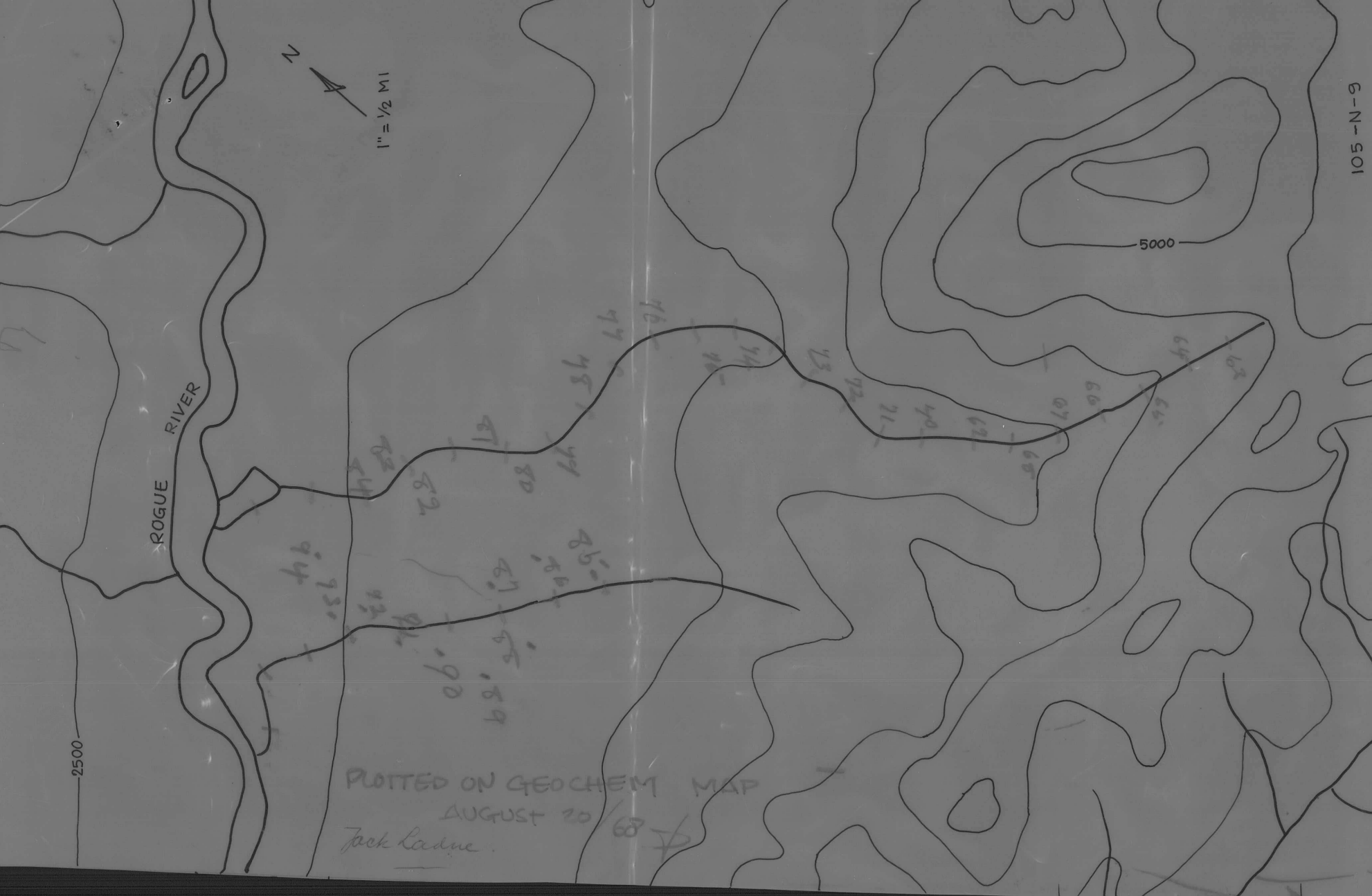
SAMPLER. Philip Clardge.....

PHOTO NUMBER. A12326-3.

DATE. June 13, 1968.....

<u>Office Use Only</u>		
Map.....		
Date Plotted.....		
Plotter.....		

Sample No.	Quartz P or A	Gossan or Min	Soil		Silt		Stream Width	Remarks	Analytical Results		
			Sand	Silt	Clay	Organic			Cu	Pb	Zn
PC-68-91	P	NIL	STREAM				1'		28		1380
PC-68-92	P	NIL	STREAM				1'		25		1110
PC-68-93	P	NIL	STREAM				1'		75		510
PC-68-94	P	NIL	STREAM				1'		80		380
PC-68-95	P	NIL	STREAM				18"		80		1230
PC-68-96	P	NIL	STREAM				1'		31		270
PC-68-97	P	NIL		STREAM			18"		34		680
PC-68-98	A	NIL		STREAM			8"		31		330
PC-68-99	P	NIL	STREAM				18"		2		102
PC-68-100	P	NIL	STREAM				2'		28		400
PC-68-101	P	NIL	STREAM				10'		30		470
PC-68-102	A	Gossan.		✓			8"	SMALL TRIBUTARY APPARENTLY ORIGINATES AT SPRING AT BREAK IN SLOPE. SAMPLED THERE.	30		168
PC-68-103		NIL	STREAM				5'		30		420
PC-68-104		NIL		STREAM			4'		38		340
PC-68-105	P	NIL	STREAM				7'		55		620
PC-68-106	P	NIL	STREAM				6'		38		620



ROGUE RIVER



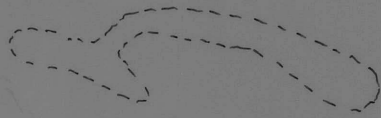
1" = 1/2 MI

5000

2500

PLOTTED ON GEOCHEM MAP
AUGUST 20 / 68
Jack Ladue

G-N-N-9



A 12344-343

Geology Traverse
 July 8, 1968.
 Phil Claridge

105-N-9

PLOTTED ON GEOLOGY
 MAP, JULY 15/68

105-N-9/10

ATLAS EXPLORATIONS LIMITED

GEOCHEMICAL STREAM SEDIMENT SURVEY DATA

105-N-9

BOB GROUP

SAMPLER... G.R. Sanford

PHOTO NUMBER. A. 12326-2

DATE... 11 June 68

Office Use Only

Map.....

Date Plotted.....

Plotter.....

Sample No.	Quartz P or A	Gossan or Min	Soil		Silt		Stream Width	Remarks	Analytical Results		
			Sand	Silt	Clay	Organic			Cu	Pb	Zn
GS6817	P			✓		✓	1'	Small creek, lot of silt			
GS6818	?			✓		✓	8'	Main ck BR X ₀₇₅ Swift, Deep			
GS6819	P			✓		✓	2'	Dark tg into float Rusty Qtz			
GS6820	P			✓		✓	2'	Quite Silty			
GS6821	P		✓	✓		✓	1'	Stream next to gossan			
GS6822	P	Gossan						Small gossan, prob org.			
GS6823	P		✓			✓	2'	Swift & Deep			
GS6824	P			✓		✓	8'	Swift, Deep			
GS6825	P			✓		✓	1'				
GS6826	P			✓		✓	<6"	stream flowing but below gossan. Pyrite sample found here			
GS6827	X	Soil sample	X	✓	X	X	X	Taken at camp site gossan Bluish green	X	X	X
GS6827	P			✓		✓	6"				
GS6828	P			✓		✓	2'	flows from swam			
GS6829	P			✓		✓	6"	200' E of talus slope			
GS6830	P		✓	✓		✓	2'				
GS6831	P			✓		✓	2'	Main ck. 10% int. float			

ATLAS EXPLORATIONS LIMITED

GEOCHEMICAL STREAM SEDIMENT SURVEY DATA

SAMPLER... G. R. Sanford

PHOTO NUMBER. A. 12251-426

DATE... 16, 18 June 68

<u>Office Use Only</u>		
Map.....		
Date Plotted.....		
Plotter.....		

Sample No.	Quartz P or A	Gossan or Min	Soil		Silt		Stream Width	Remarks	Analytical Results		
			Sand	Silt	Clay	Organic			Cu	Pb	Zn
GS6837	P			/		-	2'	Gulch + chert pebble Cong. Talus			
GS6838	A			/		-	2'	Much rusty rock in area			
GS6839	A			/		-	4'	Rusty dark list float water has rusty taste			
GS6840	A			/		-	1'				
GS6841	A			/		-	4'	Much rust around			
GS6842	P			/		-	4'				
GS6843	P			/		-	4'				
GS6844	P			/		-	8'	Rust			
GS6845	P			/		-	2'	Large cants of gal above			
GS6846	P			/		-	10'	Rust			
GS6847	P			/		-	10'	Rust			
GS6848	P			/		-	10'	Rust			
GS6849	P			/		-	1'				
GS6850	P			/		-	10'	Rust			
GS6851	P			/		-	10'	Rust			
GS6852	P			/		-	10'	Rust			

↑
Geological Mapping
Camp #2
16 June 68
G. Sanford

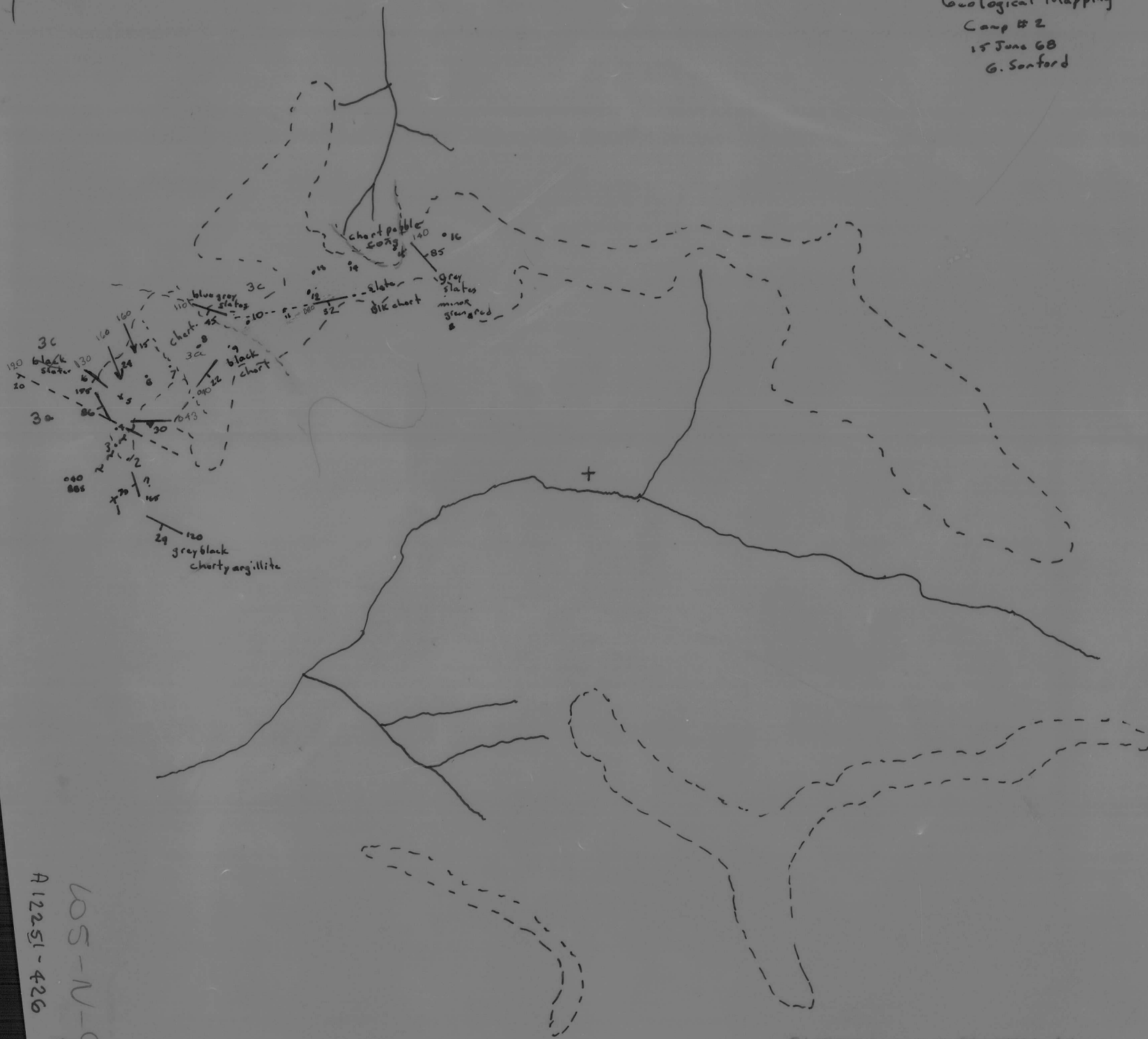


PLOTTED

105-N-9

A12251-426

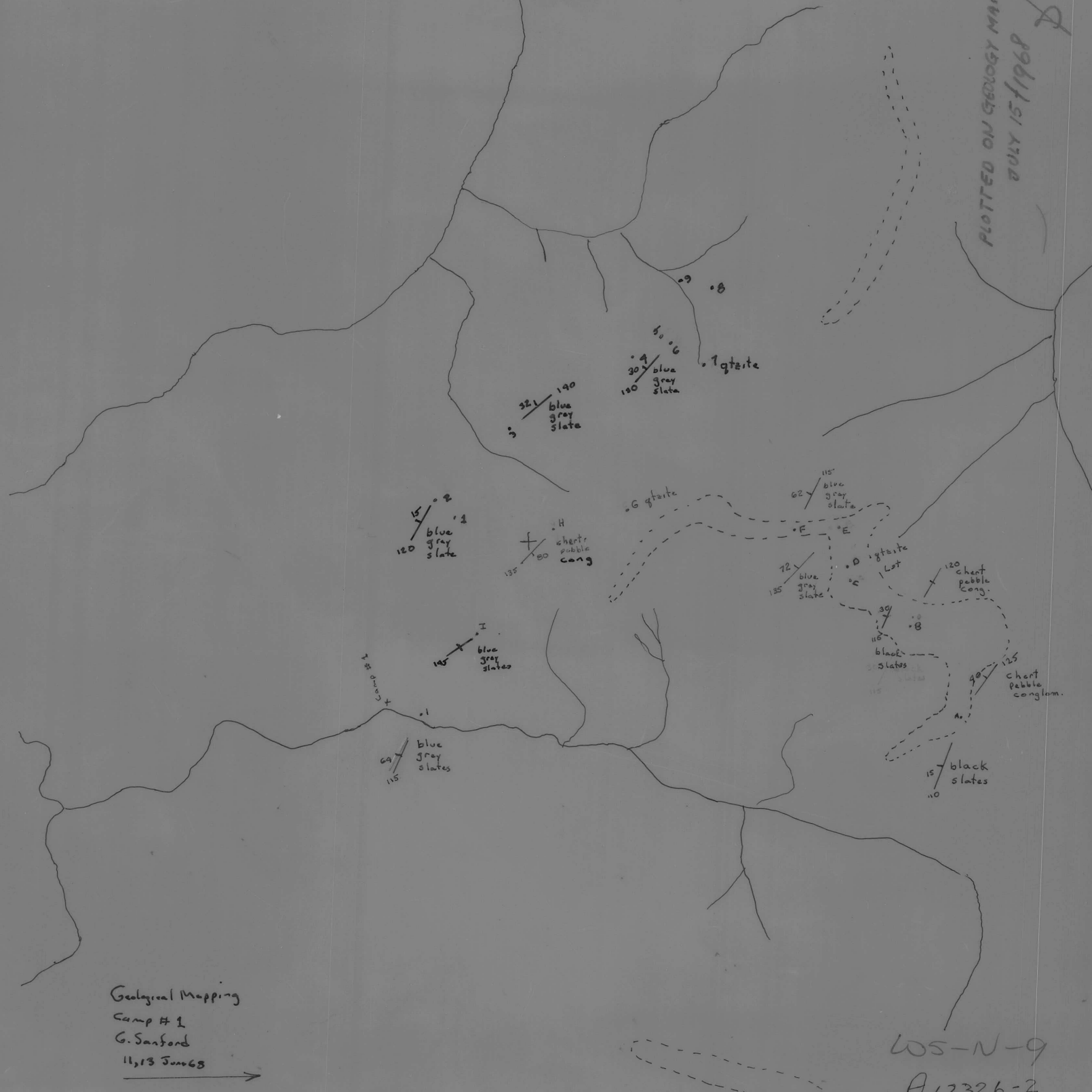
Geological Mapping
Camp # 2
15 June 68
G. Sanford



WOS-N-9.
A12251-426

PLOTTED ON GEOLOGY MAP
JULY 15/68

PLOTTED ON GEOLOGY MAP
JULY 15, 1968



Geological Mapping
Camp # 1
G. Sanford
11, 13 June 68
→

LOS-N-9
A12326-2

#1

Geological Mapping
13 June 68
Camp #2
G. Sanford

PLOTTED

LOS-N-9

AI2251-424



