

Plotted

105-N-10

A12247-11





ATLAS EXPLORATIONS LIMITED

GEOCHEMICAL STREAM SEDIMENT SURVEY DATA

*Gossan  
North of  
Swan Lake.*

SAMPLER..... *P. Dean* .....

PHOTO NUMBER.....

DATE..... *9 August 68* .....

*105-N-10*

Office Use Only

Map.....

Date Plotted.....

Plotter.....

Sample No.	Quartz P or A	Gossan or Min	Soil		Silt		Stream Width	Remarks	Analytical Results		
			Sand	Silt	Clay	Organic			Cu	Pb	Zn
<i>168 347</i>				<input checked="" type="checkbox"/>			<i>B</i>	<i>SOIL</i>			
<i>348</i>								<i>u</i>			
<i>349</i>								<i>u</i>			
<i>350</i>								<i>"</i>			
<i>351</i>	<i>—</i>			<input checked="" type="checkbox"/>			<i>1 FT</i>				
<i>352</i>								<i>SOIL</i>			
<i>353</i>	<i>—</i>			<input checked="" type="checkbox"/>			<i>1 FT</i>				
<i>354</i>								<i>SOIL</i>			
<i>355</i>		<input checked="" type="checkbox"/>						<i>SOIL</i>			
<i>356</i>								<i>SOIL</i>			
<i>357</i>								<i>SOIL</i>			
<i>358</i>	<i>P</i>	<input checked="" type="checkbox"/>		<input checked="" type="checkbox"/>			<i>1 1/2</i>				
<i>359</i>	<i>P</i>			<input checked="" type="checkbox"/>			<i>2</i>				
<i>360</i>	<i>P</i>		<input checked="" type="checkbox"/>				<i>2</i>				
<i>361</i>				<input checked="" type="checkbox"/>			<i>1 1/2</i>				
<i>362</i>				<input checked="" type="checkbox"/>			<i>1 1/2</i>				

ATLAS EXPLORATIONS LIMITED

GEOCHEMICAL STREAM SEDIMENT SURVEY DATA

SAMPLER..... *P. Dean* .....

PHOTO NUMBER.....

DATE..... *9 August 1968* .....

Office Use Only

Map.....

Date Plotted.....

Plotter.....

Sample No.	Quartz P or A	Gossan or Min	Soil		Silt		Stream Width	Remarks	Analytical Results		
			Sand	Silt	Clay	Organic			Cu	Pb	Zn
<i>368-363</i>	<i>—</i>	<i>—</i>		<i>✓</i>			<i>1 FT</i>				
<i>364</i>	<i>—</i>	<i>•</i>					<i>1 1/2</i>				
<i>365</i>	<i>—</i>						<i>1 1/2</i>				
<i>366</i>							<i>1 1/2</i>	<i>SOIL</i>			
<i>367</i>								<i>SOIL</i>			
<i>368</i>	<i>P</i>						<i>20</i>	<i>rust seepage into creek</i>			
<i>369</i>								<i>SOIL</i>			
<i>370</i>								<i>SOIL</i>			
<i>371</i>								<i>"</i>			
<i>372</i>								<i>"</i>			
<i>373</i>								<i>"</i>			
<i>374</i>								<i>"</i>			
<i>375</i>	<i>P</i>		<i>✓</i>				<i>1 1/2</i>	<i>BELOW GOSSAN</i>			
<i>376</i>	<i>P</i>										
<i>377</i>		<i>✓</i>						<i>LIMONITE BRECCIA</i>			
<i>378</i>	<i>P</i>						<i>1</i>				

*379-383*

*384*

*P*

*✓*

*1 1/2*

*SOIL*

*(SILT)*

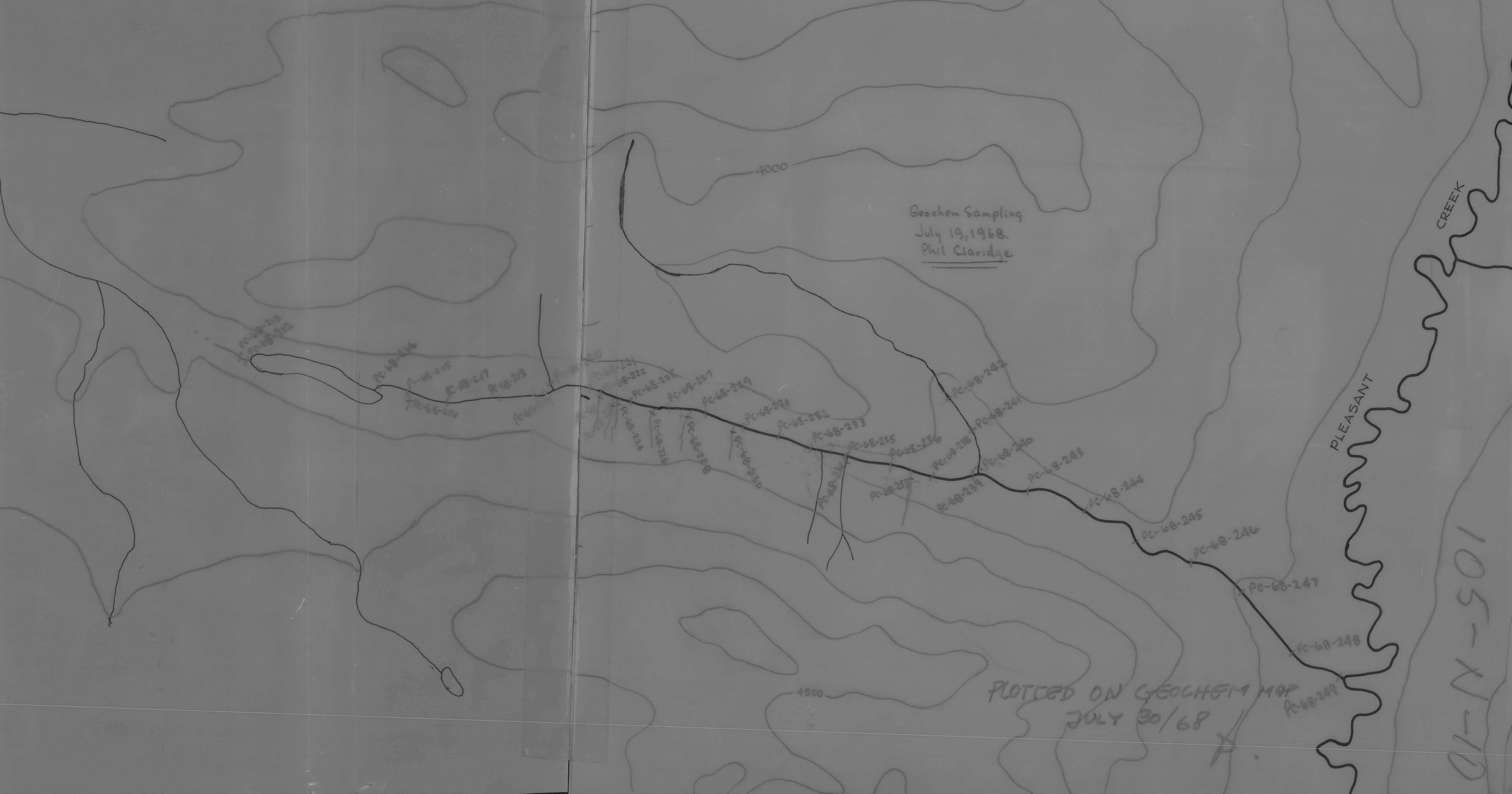




105-N-10



Geochem Sampling  
July 19, 1968.  
Phil Claridge



PLOTTED ON GEOCHEM MAP  
JULY 30/68

105-N-10

ATLAS EXPLORATIONS LIMITED

GEOCHEMICAL STREAM SEDIMENT SURVEY DATA

SAMPLER Phil Clavidge.....

PHOTO NUMBER       .....

DATE July 19, 1968.....

Office Use Only		
Map.....		
Date Plotted.....		
Plotter.....		

Sample No.	Quartz P or A	Gossan or Min	Soil		Silt		Stream Width	Remarks	Analytical Results		
			Sand	Silt	Clay	Organic			Cu	Pb	Zn
PC-68-212	P	NIL	STREAM				3'	stream entering lake, minor rust in swamp here.			
213	P	NIL	STREAM				3'	as above.			
214	P	NIL		STREAM			4'	stream leaving lake.			
215	P.	NIL	STREAM				3'	rust present in nearby swampy area			
216	A-	NIL		STREAM			6"	seepage.			
217	P	NIL		STREAM			4'				
218	P	NIL		STREAM			4'	(twigs etc) minor			
219	P	NIL		STREAM			4'				
PC-68-220	P	NIL		STREAM			8"				
221	?	NIL		STREAM			5'	rusty swampy area close by.			
222	P	NIL	STREAM				1'	mostly slats in stream bed almost no silt.			
223	P.	NIL		STREAM			8"	stream grade somewhat rusty.			
224	?	NIL		STREAM			1'	as above.			
225	?	NIL		STREAM			5'				
226	P	NIL		STREAM			6"				
227	P	NIL	STREAM				5'				

ATLAS EXPLORATIONS LIMITED

GEOCHEMICAL STREAM SEDIMENT SURVEY DATA

SAMPLER..... *Phil Cludge* .....

PHOTO NUMBER.....

DATE..... *July 19/68* .....

Office Use Only		
Map.....		
Date Plotted.....		
Plotter.....		

Sample No.	Quartz P or A	Gossan or Min	Soil		Silt		Stream Width	Remarks	Analytical Results		
			Sand	Silt	Clay	Organic			Cu	Pb	Zn
<i>P-68-228</i>	<i>A</i>	<i>NIL</i>	<i>STREAM</i>				<i>6"</i>	<i>mostly slates in stream bed</i>			
<i>229</i>	<i>?</i>	<i>NIL</i>	<i>STREAM</i>				<i>6'</i>				
<i>230</i>	<i>A.</i>	<i>NIL</i>	<i>STREAM</i>				<i>1'</i>				
<i>231</i>	<i>?</i>	<i>NIL</i>		<i>STREAM</i>			<i>6'</i>				
<i>Pc-68-232</i>	<i>A.</i>	<i>NIL</i>		<i>STREAM</i>			<i>5'</i>				
<i>233</i>	<i>?</i>	<i>NIL</i>	<i>STREAM</i>				<i>5'</i>				
<i>234</i>	<i>P</i>	<i>NIL</i>		<i>STREAM</i>			<i>1'</i>				
<i>235</i>	<i>P</i>	<i>NIL</i>	<i>STREAM</i>				<i>6'</i>				
<i>236</i>	<i>A.</i>	<i>NIL</i>		<i>STREAM</i>			<i>6'</i>				
<i>237</i>	<i>A.</i>	<i>NIL</i>		<i>STREAM</i>			<i>6"</i>				
<i>238</i>	<i>P</i>	<i>NIL</i>	<i>STREAM</i>				<i>6'</i>				
<i>239</i>	<i>P</i>	<i>NIL</i>	<i>STREAM</i>				<i>6'</i>				
<i>240</i>	<i>P</i>	<i>NIL</i>	<i>STREAM</i>				<i>3'</i>				
<i>241</i>	<i>P</i>	<i>NIL</i>		<i>STREAM</i>			<i>4'</i>	<i>slates + intrusives in stream bed.</i>			
<i>242</i>	<i>P</i>	<i>NIL</i>		<i>STREAM</i>			<i>4'</i>	<i>intrusives in stream bed slates also.</i>			
<i>243</i>	<i>P</i>	<i>NIL</i>		<i>STREAM</i>			<i>6'</i>				



PC-68-2  
PC-68-1

PC-68-5

PC-68-4

PC-68-6

PC-68-7

PC-68-9

PC-68-8

PC-68-10

PC-68-12

PC-68-13

PC-68-14

PC-68-11

PC-68-15

GEOCHEM  
SAMPLING

P.G. CLARIDGE  
MAY 31, 1968

PC-68-16

CHASSON  
PAB

SWAN LAKE

PLOTTED ON GEOCHEM.  
JULY 12/68

105-N-10

A12346-379

ATLAS EXPLORATIONS LIMITED

105-N-10

GEOCHEMICAL STREAM SEDIMENT SURVEY DATA

SAMPLER Phil Clavidge .....

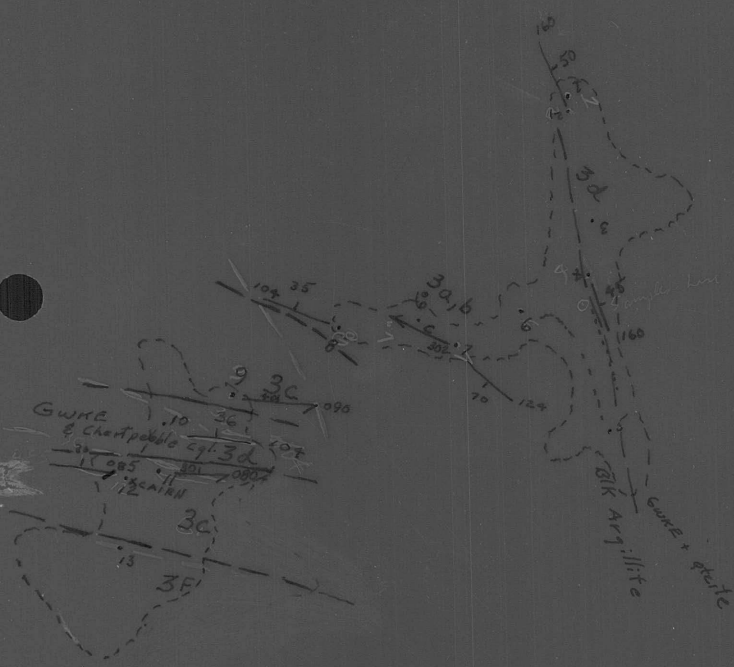
PHOTO NUMBER A.12.346-379

DATE May 31, 1968 .....

Office Use Only		
Map.....		
Date Plotted.....		
Plotter.....		

Sample No.	Quartz P or A	Gossan or Min	Soil		Silt		Stream Width	Remarks	Analytical Results		
			Sand	Silt	Clay	Organic			Cu	Pb	Zn
PC-68-1	A	rock chip sample						strike 115° dip 17°			
PC-68-2	A			soil - weathered phyllites				depth - 12"			
PC-68-3	A					soil		depth - 6"			
PC-68-4	P	rock chip						quartz stringer in phyllite.			
PC-68-5	A		STREAM				2'		50		73
PC-68-6	A					soil		depth 8"			
PC-68-7	A					soil		depth 10"			
PC-68-8	A			soil				depth 12"			
PC-68-9	A		STREAM				2'		75		184
PC-68-10	A		STREAM				4'		75		207
PC-68-11	A		STREAM				4'		75		218
PC-68-12	A	rock chip sample						from slide area.			
PC-68-13	A	rock chip sample						same location as #12			
PC-68-14	A		STREAM				5'		40		208
PC-68-15	A			silt (STREAM)			4'		38		360
PC-68-16	A			silt (STREAM)			4'		31		300

A12346-357



PLOTTED ON GEOLOGIC MAP 105-N-10  
JULY 68

TRAVERSE : JUNE 12 / 68  
105-N-10  
NE of SWAN LAKE

Black Shale  
(From helicopter)  
1955

GEOLOGICAL TRAIL  
(A.M.S.)  
TC-2 JUNE 2

Green & gray slates  
& chert (banding)

PLEASANT LAKE

105-N-10  
PLOTTED ON GEOLOGIC MAP  
JULY 16/68 J.

105-N-10

6  
ADDRESS

A



105-10-10  
11-25  
30  
124

16  
18  
24  
21  
22  
23  
24

A12247-12

105-10-10

PLOTTED ON G. BUCHANAN  
AND GEOLOGY MAP.  
JULY 13/68

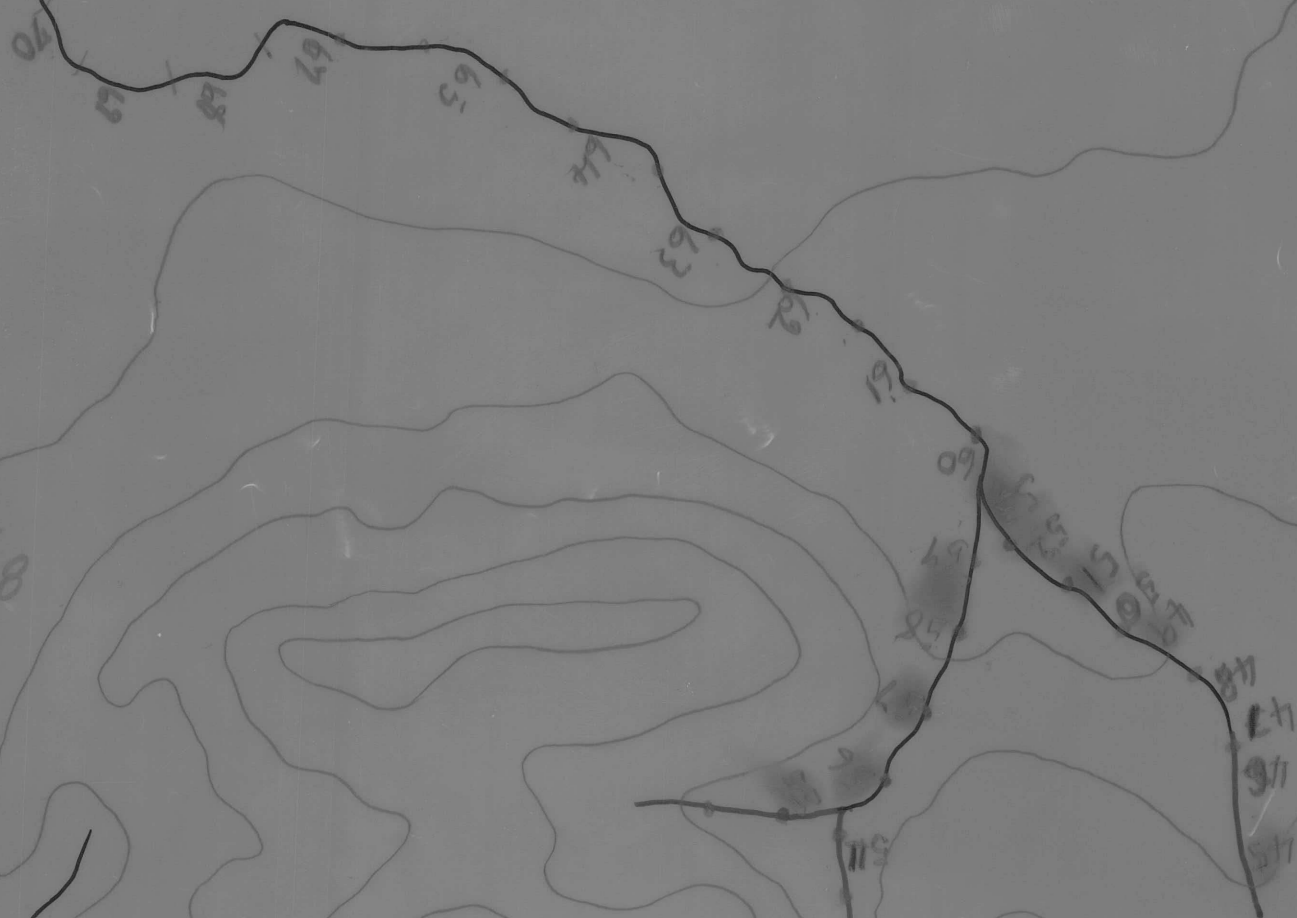
PHILIP ELBRIDGE



N  
1/2 MI

105-N-10

7/8/68



PLOTTED ON GEOCHEM. MAP  
AUGUST 20 / 68 J.S.

Pete  
LADUE

△ 5940





ATLAS EXPLORATIONS LIMITED

GEOCHEMICAL STREAM SEDIMENT SURVEY DATA

SAMPLER *Peter Ladue* .....

PHOTO NUMBER.....

DATE *August 5 1968* .....

**105-N-10**  
**1968**

Office Use Only		
Map.....		
Date Plotted.....		
Plotter.....		

Sample No.	Quartz P or A	Gossan or Min	Soil		Silt		Stream Width	Remarks	Analytical Results		
			Sand	Silt	Clay	Organic			Cu	Pb	Zn
1. rust			<del>sand</del>		Clay						
2 rust			sand								
3. sand			sand								
4 -			sand								
5 -			sand								
6. Rust			sand								
7. Rust			sand								
8 Rust			sand								
9			sand								
10			sand								
11			sand								
12			sand								
13			sand		Clay						
14			sand		<del>Clay</del>						
15			sand								
16			sand								



1/4" = 1/2 MI

5000

PLOTTED ON GEOCHEM. MAP

AUGUST 19/68

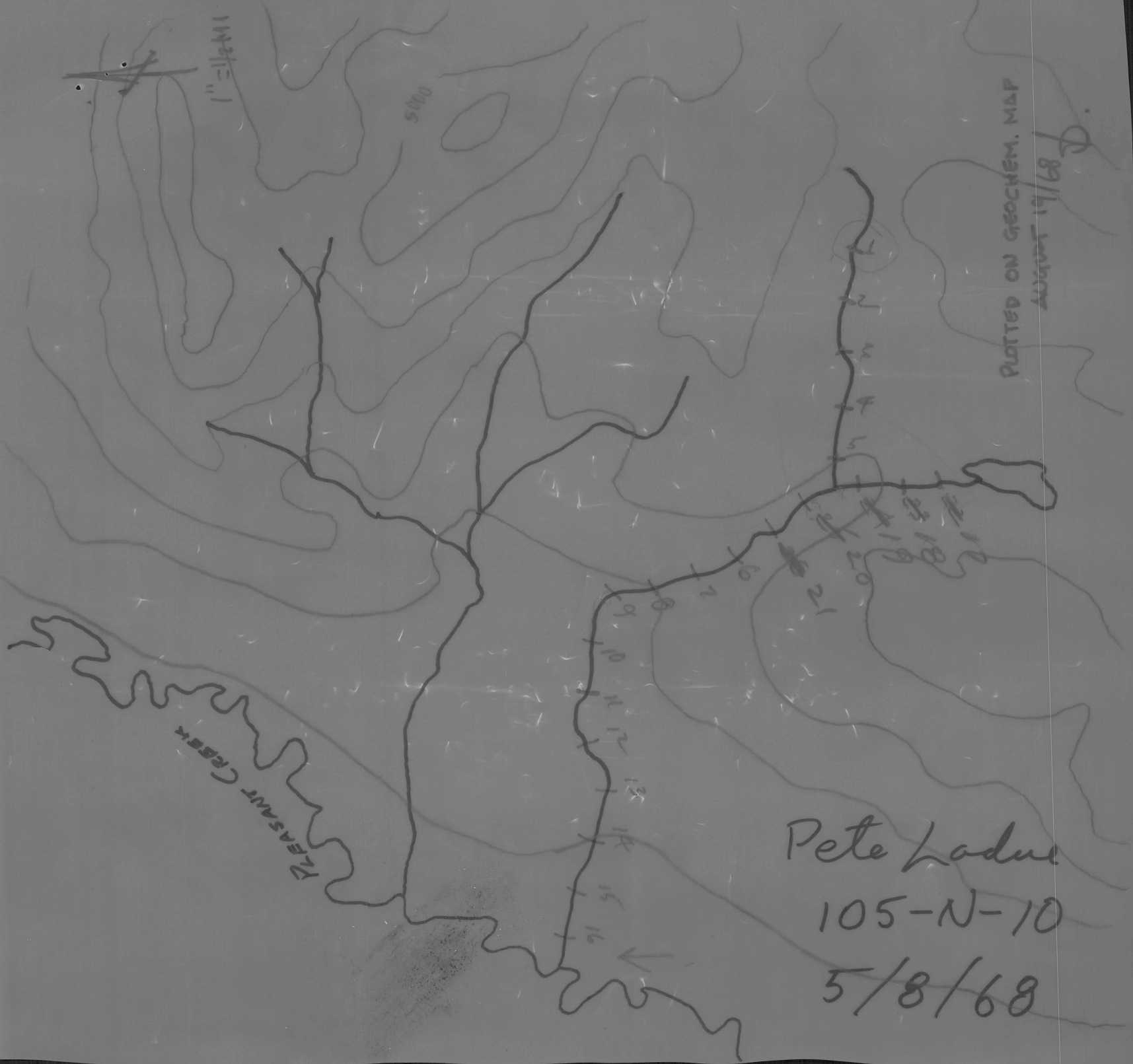
P

DEASANT Creek

Pete Ladue

105-N-10

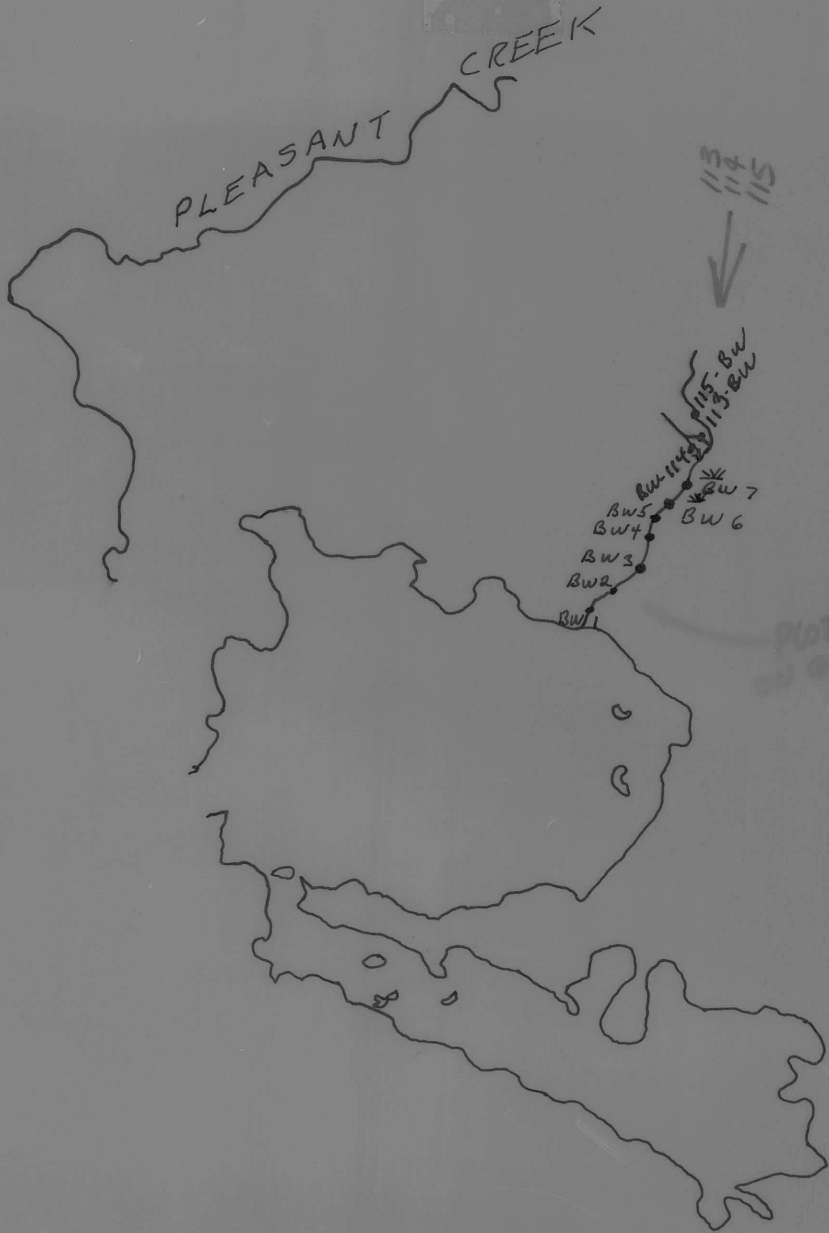
5/8/68



JUNE 17 /68

105-N-10

PLOTTED





GOSAN  
BW-68-117

BW 68-116

1" = 1/4 MI

BW 68-119

BW 68-118

BW 68-123

BW 68-120

BW 68-124

BW 68-121

BW 68-127

BW 68-122

BW 68-125

BW 68-126

BW 68-128

BW 68-132

BW 68-133

GOSAN

BW 68-129  
BW 68-130  
BW 68-131

105-N-74

PLOTTED ON GEOCHEM.  
PETE DEAN  
JULY 23/67

PLOTTED AUG. 22/68

5117

ATLAS EXPLORATIONS LIMITED

GEOCHEMICAL STREAM SEDIMENT SURVEY DATA

SAMPLER..... *Bill Warrph* .....

PHOTO NUMBER.....

DATE..... *July 12-68* .....

Office Use Only

Map.....

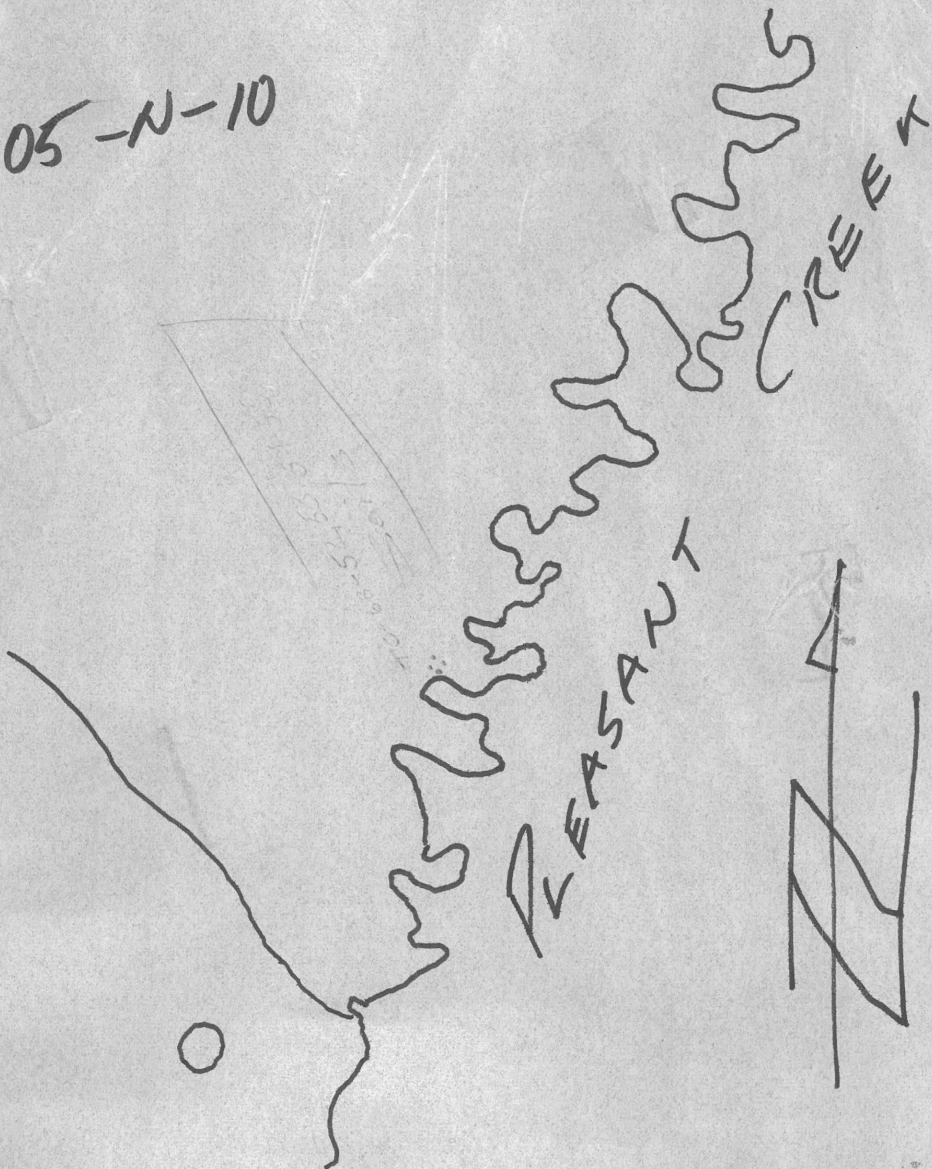
Date Plotted.....

Plotter.....

Sample No.	Quartz P or A	Gossan or Min	Soil		Silt		Stream Width	Remarks	Analytical Results		
			Sand	Silt	Clay	Organic			Cu	Pb	Zn
<i>BW 116</i>	<i>P</i>				<i>Stream Coarse</i>		<i>1'</i>	<i>Rusty argillite</i>	<i>Look at</i>		
<i>117</i>	<i>P</i>	<i>Gos.</i>			<i>Stream Coarse</i>		<i>3'</i>	<i>Just below Gossan</i>			
<i>118</i>	<i>P</i>		<i>Stream Coarse</i>		<i>"</i>		<i>3'</i>	<i>lots of shells argillite no rust</i>			
<i>119</i>	<i>P</i>		<i>"</i>				<i>3'</i>	<i>Rusty argillite shells</i>			
<i>120</i>	<i>P</i>		<i>"</i>				<i>6'</i>	<i>"</i>			
<i>21</i>	<i>P</i>		<i>"</i>				<i>6'</i>	<i>"</i>			
<i>22</i>	<i>P</i>		<i>Stream Fine</i>				<i>2'</i>	<i>leapage into main etc.</i>			
<i>23</i>	<i>P</i>		<i>Stream Coarse</i>				<i>4'</i>	<i>Rusty area at side of gale</i>			
<i>24</i>	<i>P</i>		<i>"</i>				<i>3'</i>	<i>"</i>			
<i>25</i>	<i>P</i>		<i>"</i>				<i>8'</i>	<i>argillite shales in stream</i>			
<i>26</i>	<i>P</i>		<i>"</i>				<i>6'</i>	<i>"</i>			
<i>27</i>	<i>P</i>		<i>Stream Fine</i>				<i>1'</i>	<i>"</i>			
<i>28</i>	<i>P</i>		<i>"</i>				<i>1'</i>	<i>"</i>			
<i>29</i>	<i>P</i>						<i>2'</i>	<i>Dark on Gossan should be looked at</i>			
<i>30</i>	<i>P</i>		<i>Stream Coarse</i>				<i>10'</i>	<i>Bit of Rust in Coarse</i>			
<i>31</i>	<i>P</i>		<i>"</i>				<i>10'</i>	<i>"</i>			



105-N-10



PLOTTED ON GEOCHEM MAP  
JULY 30-'68

*[Signature]*

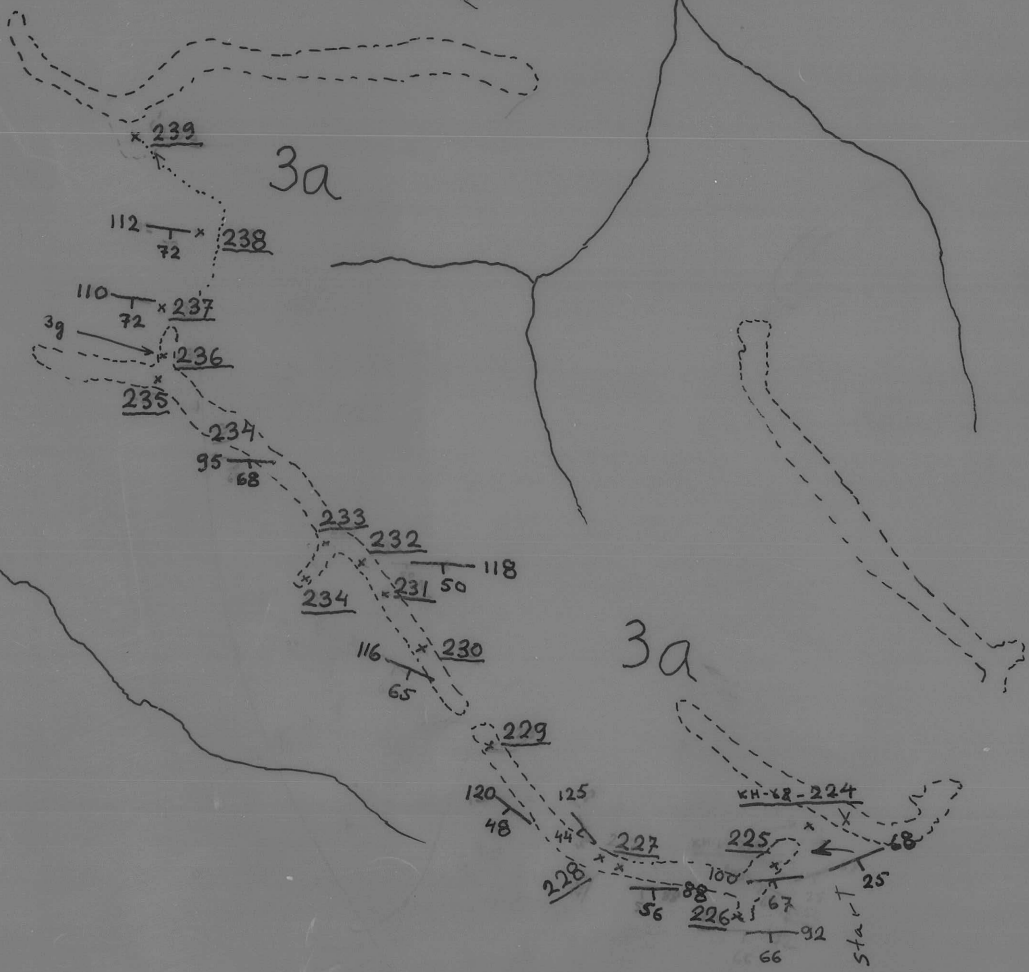






PLEASANT CREEK

Pleasant



105-N-10

Kyösti Heinänen

15.7. 1968

PLOTTED ON GEOLOGIC MAP

JULY 16-1968



SWAN

1" = 1/2 MILE

LAKE

BW 68-190

BW 68-189

BW 68-188

BW 68-187

BW 68-186

BW 68-185

BW 68-184

BW 68-183

BW 68-180

BW 68-176

BW 68-175

BW 68-174

BW 68-173

BW 68-172

BW 68-171

3500

PLOTTED ON GEOCHEM. MAP.  
JULY 31-1968

105-N-10

⊕

ATLAS EXPLORATIONS LIMITED

GEOCHEMICAL STREAM SEDIMENT SURVEY DATA

SAMPLER.....*Bill Warrick*.....

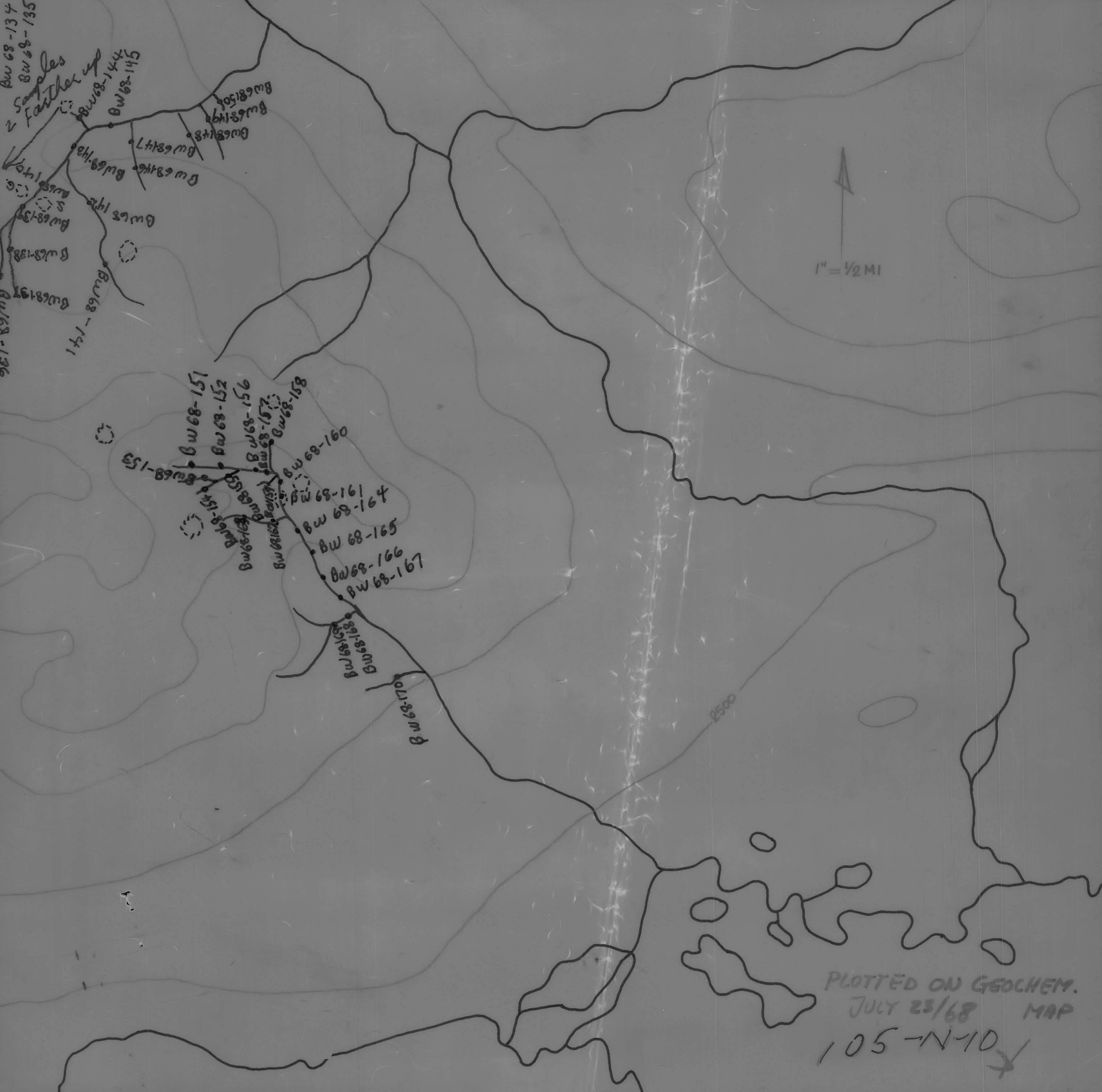
PHOTO NUMBER.....

DATE.....*July 18-68*.....

Office Use Only		
Map.....	Date Plotted.....	Plotter.....

Sample No.	Quartz P or A	Gossan or Min	Soil		Silt		Stream Width	Remarks	Analytical Results		
			Sand	Silt	Clay	Organic			Cu	Pb	Zn
<i>3W68-171</i>	<i>P</i>		<i>Sh. Coarse</i>				<i>1'</i>	<i>Swamp area Shales Quartz</i>			
<i>72</i>	<i>P</i>		<i>"</i>				<i>2'</i>	<i>" "</i>			
<i>73</i>	<i>P</i>		<i>"</i>				<i>3'</i>	<i>" "</i>			
<i>74</i>	<i>P</i>		<i>"</i>				<i>4'</i>	<i>shales quartz on bottom</i>			
<i>75</i>	<i>P</i>		<i>Sh. Fine</i>				<i>4'</i>	<i>quartz area</i>			
<i>76</i>	<i>P</i>		<i>"</i>				<i>4'</i>	<i>" "</i>			
<i>77</i>	<i>P</i>		<i>Sh. Coarse</i>				<i>3'</i>	<i>shales quartz hard to sample</i>			
<i>78</i>	<i>P</i>		<i>Sh. Fine</i>				<i>2'</i>	<i>" "</i>			
<i>79</i>	<i>P</i>		<i>"</i>				<i>2'</i>	<i>" "</i>			
<i>80</i>	<i>P</i>		<i>"</i>				<i>4'</i>	<i>argillite Shales on bottom</i>			
<i>81</i>	<i>P</i>		<i>"</i>				<i>4'</i>	<i>shale outcrop</i>			
<i>82</i>	<i>P</i>		<i>"</i>				<i>4'</i>	<i>" "</i>			
<i>83</i>	<i>P</i>		<i>Sh. Coarse</i>				<i>2'</i>	<i>Shale + quartz</i>			
<i>84</i>	<i>P</i>		<i>"</i>				<i>4'</i>	<i>" "</i>			
<i>85</i>	<i>P</i>		<i>"</i>				<i>3'</i>	<i>" "</i>			
<i>86</i>	<i>P</i>		<i>"</i>				<i>6'</i>	<i>" "</i>			





ATLAS EXPLORATIONS LIMITED

GEOCHEMICAL STREAM SEDIMENT SURVEY DATA

SAMPLER..... *Bill Warr* .....

PHOTO NUMBER.....

DATE..... *July 13-68* .....

Office Use Only

Map.....

Date Plotted.....

Plotter.....

Sample No.	Quartz P or A	Gossan or Min	Soil		Silt		Stream Width	Remarks	Analytical Results		
			Sand	Silt	Clay	Organic			Cu	Pb	Zn
<i>BW 68134</i>	<i>P</i>		<i>Stream Course</i>				<i>1'</i>	<i>Argillite quartz and Granite in stream</i>			
<i>35</i>	<i>P</i>		<i>fine</i>				<i>2'</i>	<i>" "</i>			
<i>36</i>	<i>P</i>		<i>"</i>				<i>2</i>	<i>" "</i>			
<i>37</i>	<i>P</i>		<i>Coarse</i>				<i>4'</i>	<i>" "</i>			
<i>38</i>	<i>P</i>		<i>"</i>				<i>6'</i>	<i>" "</i>			
<i>39</i>	<i>P</i>		<i>fine</i>				<i>6'</i>	<i>" "</i>			
<i>140</i>	<i>P</i>		<i>"</i>				<i>10'</i>	<i>" "</i>			
<i>41</i>	<i>P</i>		<i>"</i>				<i>4'</i>	<i>Lg rusty outcrop above sample</i>			
<i>42</i>	<i>P</i>		<i>"</i>				<i>6'</i>	<i>Lg granite boulders in stream</i>			
<i>43</i>	<i>P</i>		<i>"</i>				<i>10'</i>	<i>" "</i>			
<i>44</i>	<i>P</i>		<i>"</i>				<i>1'</i>	<i>Leopage below old outcrop</i>			
<i>45</i>	<i>P</i>		<i>"</i>				<i>8'</i>	<i>-----</i>			
<i>46</i>	<i>P</i>		<i>"</i>				<i>3'</i>	<i>Argillite quartz in stream</i>			
<i>47</i>	<i>P</i>		<i>"</i>				<i>4'</i>	<i>" "</i>			
<i>48</i>	<i>P</i>		<i>"</i>				<i>2'</i>	<i>" "</i>			
<i>49</i>	<i>P</i>		<i>"</i>				<i>1'</i>	<i>" "</i>			



ATLAS EXPLORATIONS LIMITED

GEOCHEMICAL STREAM SEDIMENT SURVEY DATA

SAMPLER... *Bill Wargh* .....

PHOTO NUMBER.....

DATE... *July 15, 68* .....

Office Use Only

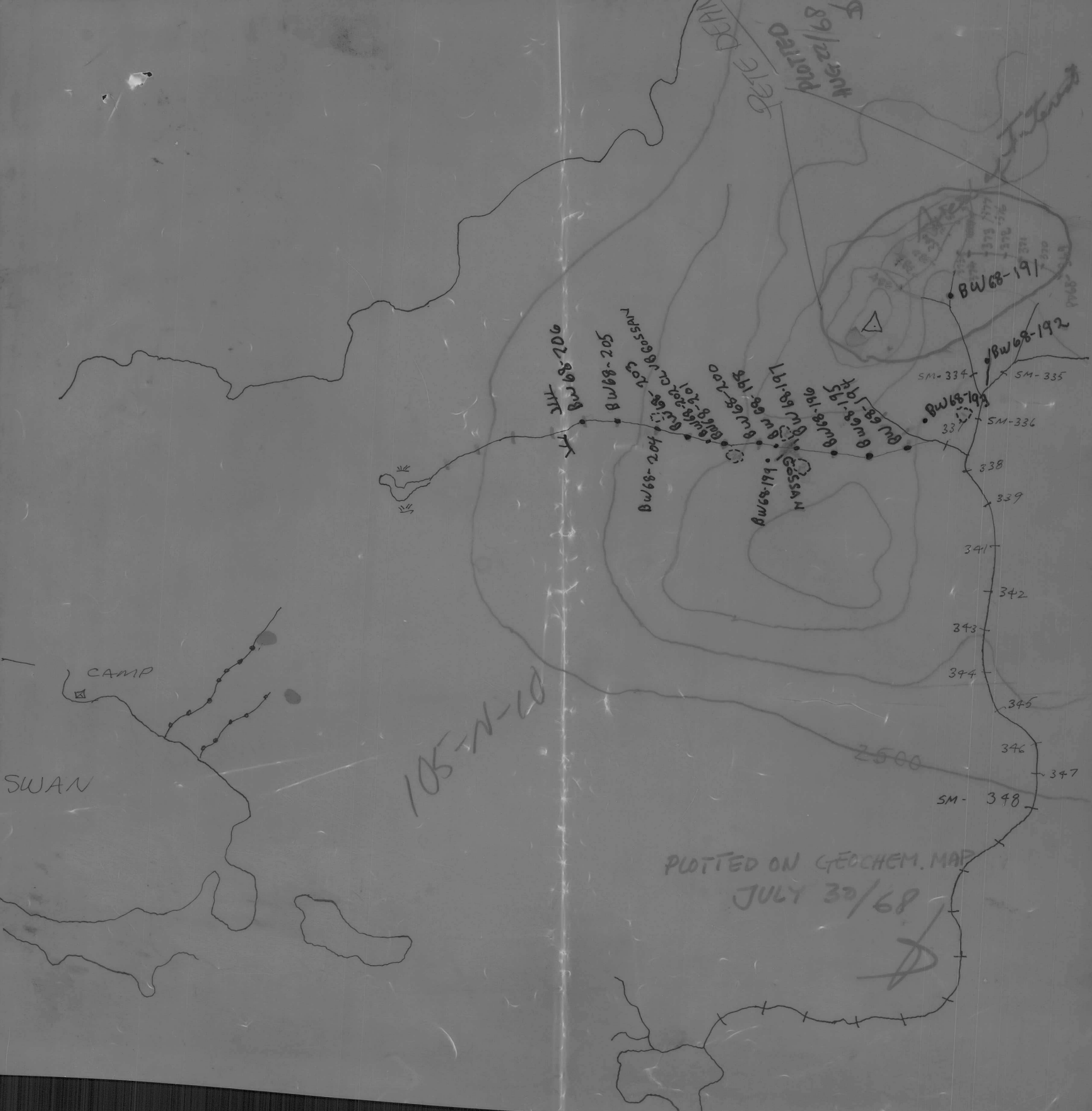
Map.....

Date Plotted.....

Plotter.....

Sample No.	Quartz P or A	Gossan or Min	Soil		Silt		Stream Width	Remarks	Analytical Results		
			Sand	Silt	Clay	Organic			Cu	Pb	Zn
<i>6W 68-151</i>	<i>P</i>		<i>Dry stream fine</i>				<i>1'</i>	<i>Dry stream slates black quartz veins</i>			
<i>52</i>	<i>P</i>		<i>Stream coarse</i>				<i>2'</i>	<i>black slates quartz float</i>			
<i>53</i>	<i>P</i>		<i>"</i>				<i>1'</i>	<i>Dry stream black slate - bit of quartz float</i>			
<i>54</i>	<i>P</i>		<i>"</i>				<i>1'</i>	<i>quartz black slate</i>			
<i>55</i>	<i>P</i>		<i>"</i>				<i>2'</i>	<i>" "</i>			
<i>56</i>	<i>P</i>		<i>"</i>				<i>3'</i>	<i>" "</i>			
<i>57</i>	<i>P</i>		<i>"</i>				<i>3'</i>	<i>" "</i>			
<i>58</i>	<i>P</i>		<i>"</i>				<i>3'</i>	<i>Dry stream quartz shales</i>			
<i>59</i>	<i>P</i>		<i>"</i>				<i>1'</i>	<i>quartz slates bit of quartz</i>			
<i>60</i>	<i>P</i>		<i>Stream fine</i>				<i>3'</i>	<i>angular quartz slates</i>			
<i>61</i>	<i>P</i>		<i>Stream coarse</i>				<i>4'</i>	<i>" "</i>			
<i>62</i>	<i>P</i>		<i>"</i>				<i>3'</i>	<i>Mouth of stream</i>			
<i>63</i>	<i>P</i>		<i>"</i>				<i>2'</i>	<i>slates black gray Quartzite</i>			
<i>64</i>	<i>P</i>		<i>"</i>				<i>5'</i>	<i>" "</i>			
<i>65</i>	<i>P</i>		<i>"</i>				<i>2'</i>	<i>" "</i>			
<i>66</i>	<i>P</i>		<i>"</i>				<i>6'</i>	<i>slates opelite quartz</i>			





ATLAS EXPLORATIONS LIMITED

GEOCHEMICAL STREAM SEDIMENT SURVEY DATA

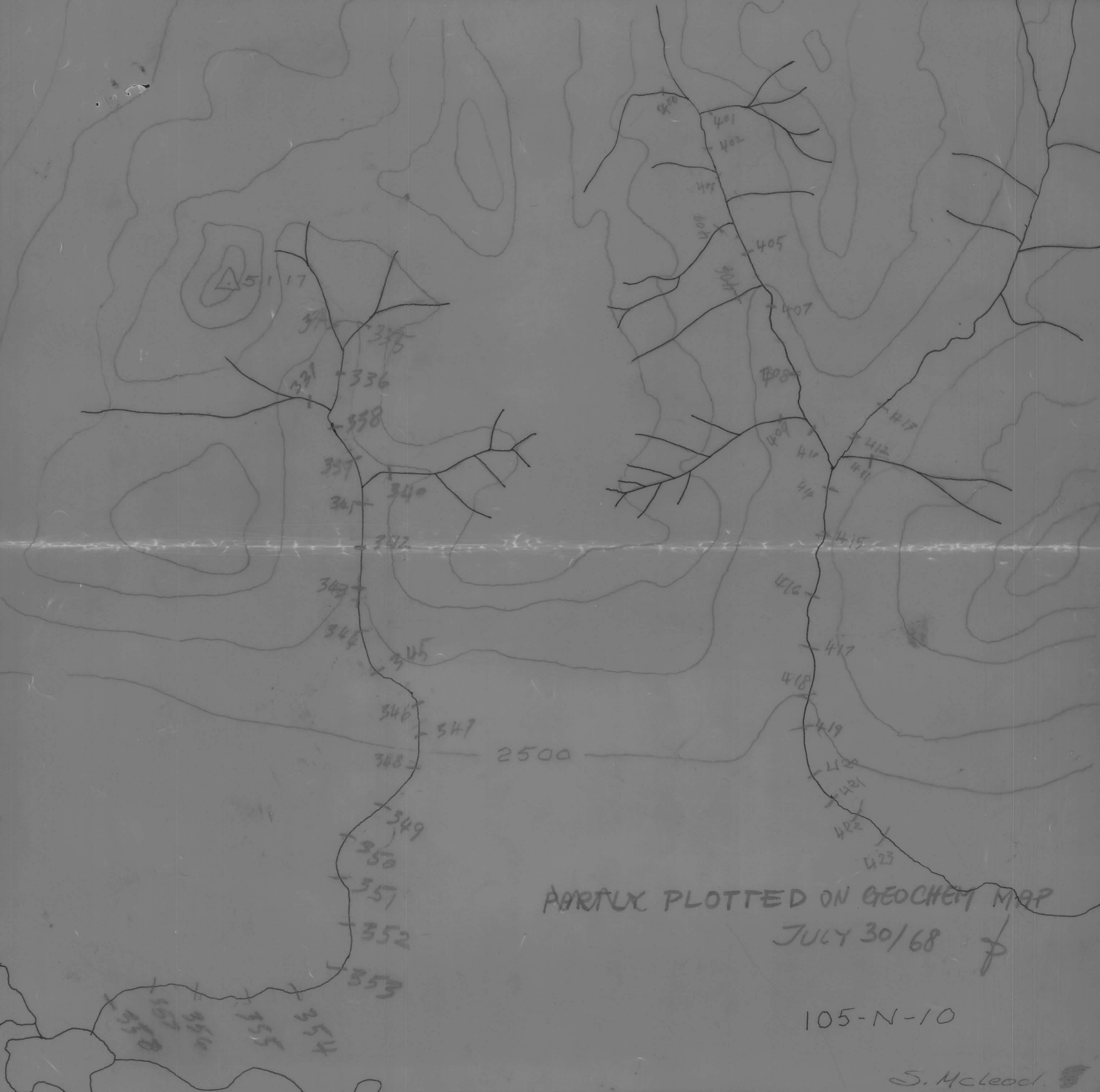
SAMPLER..... *Bill Waugh* .....

PHOTO NUMBER.....

DATE..... *July 19-68* .....

Office Use Only		
Map.....		
Date Plotted.....		
Plotter.....		

Sample No.	Quartz P or A	Gossan or Min	Soil		Silt		Stream Width	Remarks	Analytical Results		
			Sand	Silt	Clay	Organic			Cu	Pb	Zn
<i>w68-191</i>	<i>P</i>		<i>str. coarse</i>				<i>2'</i>	<i>shales quartz in str</i>			
<i>92</i>	<i>P</i>		<i>leepage coarse</i>				<i>6'</i>	<i>High leepage</i>			
<i>93</i>	<i>P</i>		<i>outcrop hillside</i>				<i>—</i>	<i>shales dark brown soil</i>			
<i>94</i>	<i>P</i>		<i>str. coarse</i>				<i>3'</i>	<i>dry str argillite float</i>			
<i>95</i>	<i>P</i>		<i>"</i>				<i>3'</i>	<i>" "</i>			
<i>96</i>	<i>P</i>		<i>soil no str.</i>				<i>—</i>	<i>argillite argillite float present</i>			
<i>97</i>	<i>P</i>		<i>str. coarse</i>				<i>1'</i>	<i>rusty shales argillite in str</i>			
<i>98</i>	<i>P</i>	<i>Gossan</i>		<i>silt</i>			<i>—</i>	<i>Gossan sample</i>			
<i>99</i>	<i>P</i>	<i>"</i>		<i>"</i>			<i>—</i>	<i>" "</i>			
<i>200</i>	<i>P</i>		<i>str. coarse</i>				<i>1'</i>	<i>800' below gossan</i>			
<i>01</i>	<i>P</i>		<i>str. fine</i>				<i>2'</i>	<i>—</i>			
<i>02</i>	<i>P</i>			<i>silt coarse</i>				<i>Dry str bed</i>			
<i>03</i>	<i>P</i>	<i>Gossan</i>	<i>str. fine</i>				<i>2'</i>	<i>Whole str bed seems to be gossan mat.</i>			
<i>04</i>		<i>"</i>	<i>"</i>				<i>2'</i>	<i>rusty Gossan mat.</i>			
<i>05</i>		<i>"</i>	<i>str. coarse</i>				<i>4'</i>	<i>" "</i>			
<i>06</i>	<i>P</i>		<i>str. fine</i>				<i>1'</i>	<i>Leepage to swamp</i>			



PARTLY PLOTTED ON GEOCHEM MAP  
JULY 30/68

105-N-10

S. McLeod.

ATLAS EXPLORATIONS LIMITED

GEOCHEMICAL STREAM SEDIMENT SURVEY DATA

SAMPLER. SAM MCLEOD.....

PHOTO NUMBER.....

DATE. JULY 12 1968.....

Office Use Only

Map.....

Date Plotted.....

Plotter.....

Sample No.	Quartz P or A	Gossan or Min	Soil		Silt		Stream Width	Remarks	Analytical Results		
			Sand	Silt	Clay	Organic			Cu	Pb	Zn
400		SAND GRAVEL					2-				
401		SAND GRAVEL					2-				
402		FINE SAND					3-				
403		RUSTY SAND					3-				
404		SAND GRAVEL					1-				
405		SAND GRAVEL					2-				
406		SAND GRAVEL					4-				
407		SAND GRAVEL					5-				
408		BLACK SAND					2-				
409		BLACK SAND					5-				
410		BLACK SAND					3-				
411		BLACK SAND					8-				
412		SAND GRAVEL					8-				
413		BLACK SAND					9-				
414		SAND GRAVEL					9-				
415		FINE SAND					9-				



ATLAS EXPLORATIONS LIMITED

GEOCHEMICAL STREAM SEDIMENT SURVEY DATA

SAMPLER SAM MCLEOD.....

PHOTO NUMBER.....

DATE JULY 8 1968.....

Office Use Only

Map.....

Date Plotted.....

Plotter.....

Sample No.	Quartz P or A	Gossan or Min	Soil		Silt		Stream Width	Remarks	Analytical Results		
			Sand	Silt	Clay	Organic			Cu	Pb	Zn
334		SAND GRAVEL					2-	FLOOD IN STREAM			
335		SAND GRAVEL					2-	FLOOD IN STREAM			
336		SAND GRAVEL					10-	STREAM			
337		SAND GRAVEL					2-	FLOOD IN STREAM			
338		SAND GRAVEL					10-	STREAM			
339		SILT GRAVEL					10-	STREAM			
340		SILT GRAVEL					2-	FLOOD IN STREAM			
341		SILT GRAVEL					10-	STREAM			
342		SILT GRAVEL					10-	STREAM			
343		SAND GRAVEL					10	STREAM			
344		SAND GRAVEL					10	STREAM			
345		RUSTY GRAVEL					10	STREAM			
346		RUSTY GRAVEL					10	STREAM			
347		RUSTY GRAVEL					10	STREAM			
348		RUSTY GRAVEL					10	STREAM			
349		FINE SAND					10	STREAM			



1" = 1/2 MI



105-N-10

PLOTTED ON GEOCHEM. MAP  
JULY 23/68

S. McLean.  
July 68

EXEPT # 502

ATLAS EXPLORATIONS LIMITED

GEOCHEMICAL STREAM SEDIMENT SURVEY DATA

SAMPLER. SAM MCLEOD .....

PHOTO NUMBER.....

DATE. JULY 13 1968 .....

<u>Office Use Only</u>		
Map.....		
Date Plotted.....		
Plotter.....		

Sample No.	Quartz P or A	Gossan or Min	Soil		Silt		Stream Width	Remarks	Analytical Results		
			Sand	Silt	Clay	Organic			Cu	Pb	Zn
424		SAND GRAVEL					2-				
425		SAND GRAVEL					3-				
426		FINE SAND					3-				
427		FINE SAND					4-				
428		SAND GRAVEL					3-	RUSTY QUARTZITE			
429		FINE SAND					4-				
430		SAND GRAVEL					2-				
431		SAND GRAVEL					2-				
432		FINE SAND					4-	SH-GRANIT QUAR-			
433		SAND GRAVEL					4-	GRANIT QUAR-			
434		FINE SAND					5-				
435		FINE SAND					5-				
436		FINE SAND					5-				
437		FINE SAND					6-				
438		FINE SAND					6-				
439		FINE SAND					2-				



ATLAS EXPLORATIONS LIMITED

GEOCHEMICAL STREAM SEDIMENT SURVEY DATA

SAMPLER. SAM McLEOD .....

PHOTO NUMBER.....

DATE. JULY 15 1963 .....

Office Use Only

Map.....

Date Plotted.....

Plotter.....

Sample No.	Quartz P or A	Gossan or Min	Soil		Silt		Stream Width	Remarks	Analytical Results		
			Sand	Silt	Clay	Organic			Cu	Pb	Zn
477		FINE SAND					1-	"			
478		FINE SAND					2-	"			
479		FINE SAND					2-	"			
480		SAND GRAVEL					3-	"			
481		SAND GRAVEL					3	GRANIT OUTC			
482		SAND GRAVEL					2-	"			
483		FINE SAND					3-	"			
484		FINE SAND					4-	"			
485		SAND GRAVEL					4-	QUARTZITE			
486		FINE SAND					2-	"			
487		FINE SAND					4-	QUARTZITE			
488		FINE SAND					4-	"			
489		FINE SAND					5-	"			
490		SAND GRAVEL					5-	"			
491		FINE SAND					6-	"			
492		FINE SAND					6	GRANIT OUTC			



1" = 1/2 MI



105-N-10



PLOTTED ON GEOCHEM. MAP

JULY 23/68

J.

ATLAS EXPLORATIONS LIMITED

GEOCHEMICAL STREAM SEDIMENT SURVEY DATA

SAMPLER. SAM MCL FAD.....

PHOTO NUMBER.....

DATE JULY 14 1968.....

Office Use Only

Map.....

Date Plotted.....

Plotter.....

Sample No.	Quartz P or A	Gossan or Min	Soil		Silt		Stream Width	Remarks	Analytical Results		
			Sand	Silt	Clay	Organic			Cu	Pb	Zn
451		RUSTY SAND					2-				
452		RUSTY SAND					2-				
453		RUSTY SAND					3-				
454		SAND GRAVEL					3-				
455		SAND GRAVEL					4-				
456		SAND GRAVEL					4-				
457		SAND GRAVEL					4-				
458		SAND GRAVEL					4-				
459		FINE SAND					5-				
460		SAND GRAVEL					5-				
461		FINE SAND					3-				
462		FINE SAND					3-				
463		SAND GRAVEL					3-				
464		SAND GRAVEL					4-				
465		FINE SAND					5-				
466		SAND GRAVEL					5-				



7/8/68

PLEASANT CREEK

↑  
1" = 1/2 MI

PLOTTED ON GEOCHEM. MAP  
AUGUST, 20/68

JACK LAQUE

ATLAS EXPLORATIONS LIMITED

GEOCHEMICAL STREAM SEDIMENT SURVEY DATA

SAMPLER *Jack Ladue* .....

PHOTO NUMBER.....

DATE *Aug 21 68* .....

Office Use Only		
Map.....		
Date Plotted.....		
Plotter.....		

Sample No.	Quartz P or A	Gossan or Min	Soil		Silt		Stream Width	Remarks	Analytical Results		
			Sand	Silt	Clay	Organic			Cu	Pb	Zn
41				silt							
42				silt							
43				silt							
44				silt							
45				silt							
46				silt							
47				silt							
48				silt							
49				silt							
50				silt							
51				silt							
52				silt							
53				silt							
54				silt							
55				silt							
56				silt							



1" = 1/2 MI

PLEASANT CREEK

Jack  
105-N-10 LAQUE  
105-N-10  
5/8/68

PLOTTED ON GEOCHEM MAP  
AUGUST 19/68

ATLAS EXPLORATIONS LIMITED

GEOCHEMICAL STREAM SEDIMENT SURVEY DATA

SAMPLER..... *Jack Ladue* .....

PHOTO NUMBER.....

DATE..... *August 5 68* .....

<u>Office Use Only</u>		
Map.....		
Date Plotted.....		
Plotter.....		

Sample No.	Quartz P or A	Gossan or Min	Soil		Silt		Stream Width	Remarks	Analytical Results		
			Sand	Silt	Clay	Organic			Cu	Pb	Zn
<i>1</i>			<i>sand</i>								
<i>2</i>			<i>sand</i>								
<i>3</i>			<i>sand</i>		<del><i>clay</i></del>						
<i>4</i>			<i>sand</i>		<i>clay</i>						
<i>5</i>			<i>sand</i>								
<i>6</i>			<i>sand</i>								
<i>7</i>			<i>sand</i>								
<i>8</i>					<i>clay</i>						
<i>9</i>			<i>sand on</i>		<i>clay</i>						
<i>10</i>			<i>sand</i>								
<i>11 and 10</i>			<i>sand on</i>		<i>clay</i>						
<i>12</i>			<i>sand</i>								
<i>13</i>					<i>clay</i>						
<i>14</i>			<i>sand</i>		<i>clay</i>						
<i>15</i>					<i>clay</i>						
<i>16</i>			<i>sand and</i>		<i>clay</i>						
<i>17</i>					<i>clay</i>						

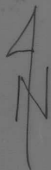






SWAN LAKE

BILL WAUGH JULY 22-68



DOVE  
KYÖSTI  
HEINÄNEN

BW68-228

BW68-227

BW68-226

BW68-225

BW68-224

BW68-223

BW68-222

BW68-221

\*BW68-218

BW68-217

BW68-220

BW68-216

\*BW68-219

BW68-210

\*BW68-215

\*BW68-209

BW213

BW68-214

BW212

BW68-208

BW211

BW68-207



105-10/7

PLOTTED ON GEOCHEM. MAP

JULY 31-1968

Bill Waugh  
July '68

ATLAS EXPLORATIONS LIMITED

GEOCHEMICAL STREAM SEDIMENT SURVEY DATA

SAMPLER *Bill Waugh* .....

PHOTO NUMBER .....

DATE *July 22-68* .....

Office Use Only

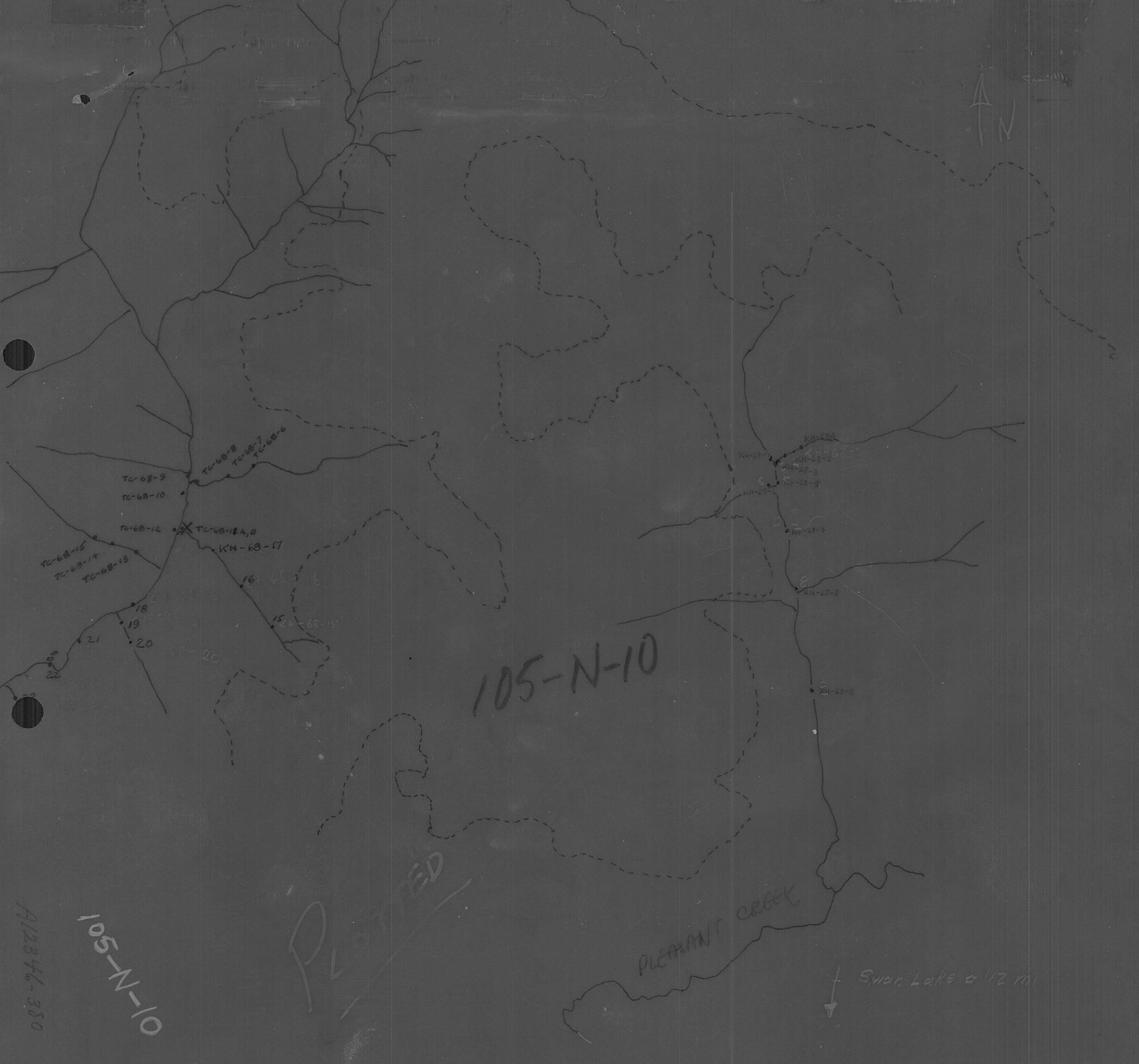
Map .....

Date Plotted .....

Plotter .....

Sample No.	Quartz P or A	Gossan or Min	Soil		Silt		Stream Width	Remarks	Analytical Results		
			Sand	Silt	Clay	Organic			Cu	Pb	Zn
<i>163-207</i>	<i>P</i>			<i>lt. fine</i>			<i>1'</i>	<i>Swampy area str. slow</i>			
<i>8</i>	<i>P</i>		<i>str coarse</i>				<i>1'</i>	<i>quartz and shales in str.</i>			
<i>9</i>	<i>P</i>		<i>"</i>				<i>3'</i>	<i>" "</i>			
<i>218</i>	<i>P</i>		<i>"</i>				<i>3'</i>	<i>" "</i>			
<i>11</i>	<i>P</i>		<i>"</i>				<i>1'</i>	<i>" "</i>			
<i>12</i>	<i>P</i>		<i>str coarse</i>				<i>1'</i>	<i>" "</i>			
<i>13</i>	<i>P</i>		<i>"</i>				<i>1'</i>	<i>" "</i>			
<i>14</i>	<i>P</i>		<i>"</i>				<i>2'</i>	<i>Dry stream bed</i>			
<i>15</i>	<i>P</i>		<i>"</i>				<i>2'</i>	<i>shales quartz in str.</i>			
<i>16</i>	<i>P</i>		<i>lt. fine</i>				<i>2'</i>	<i>run area no outcrop</i>			
<i>17</i>	<i>P</i>		<i>"</i>				<i>3'</i>	<i>" "</i>			
<i>18</i>	<i>P</i>		<i>"</i>				<i>4'</i>	<i>" "</i>			
<i>19</i>	<i>P</i>		<i>"</i>				<i>6'</i>	<i>large quartzite boulders in str.</i>			
<i>220</i>	<i>P</i>		<i>"</i>				<i>8'</i>	<i>" "</i>			
<i>21</i>	<i>P</i>		<i>"</i>				<i>8'</i>	<i>" "</i>			
<i>22</i>	<i>P</i>		<i>"</i>				<i>18'</i>	<i>black slate outcrop in str.</i>			





105-N-10

PLATTED

PLEASANT CREEK

Swan Lake 1/2 mi

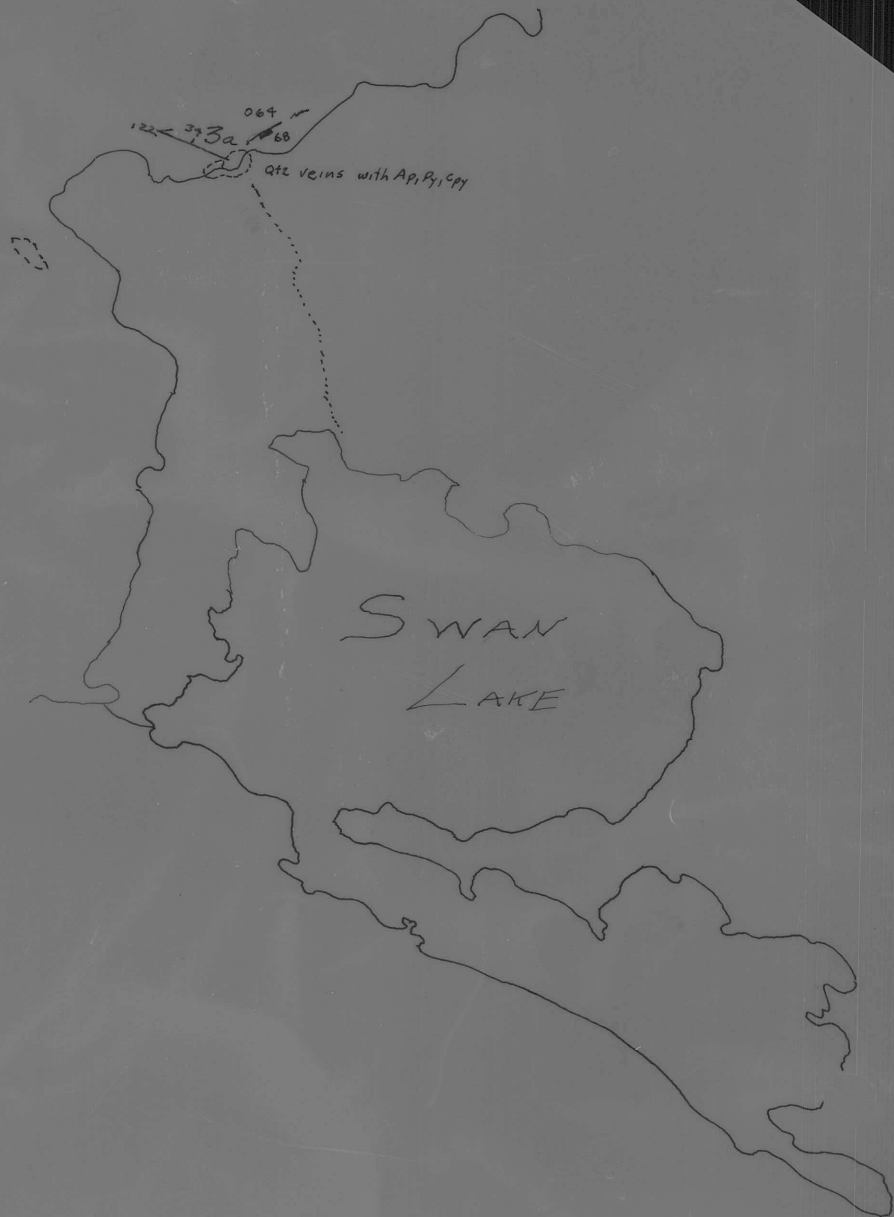
105-N-10

A12346-350









PLOTTED ON GEOLOGY MAP  
AUGUST 2-1968

Ⓢ

105-N-10  
COATES

A12346-378



A12346-382

105-N-10

GEOCHEM PLOTTED  
 SEPT. 1/68

Kyösti Heinänen

14.7.1968

PLOTTED ON GEOLOGY MAP  
 JULY 16-'68

PLEASANT LAKE

islands  
Landing

208 x aplite  
209 x  
3c  
3a  
132 136  
206 x  
207  
205

1c  
1b  
201 x 38  
202 x  
200 x  
125  
203  
204  
1a  
197 x  
199 x  
198 x  
30  
142

KH-68-196 x  
29  
138

GEOCHEM. PLOTTED  
SEPT. 1-68

Kyösti Heinänen

13.7.1968

PLOTTED ON GEOLOGY MAP

JULY 16/68

Landing Spot ?  
105-N-10  
A12247-8

28  
98 x 158

27  
90 x 157

30  
110  
KH-68-156

3c

50  
108 x 159

x 160

164 37 114  
35 94  
162  
108 65  
161  
163 35 105

3h

PLEASANT  
LAKE

Kyösti Heinänen

July 8 /68

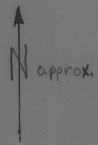
PLOTTED ON GEOLOGY

MAP JULY 16/68

β

A12247-10

105-N-10

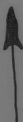


PLOTTED ON GEOLOGIC MAP  
JULY - 20 - 1968  $\phi$ .

105-N-10.

A12333-47

Geology Traverse  
July 18, 1968.  
Phil Claridge.



Geological Mapping  
8 July 68  
G. Sanford

state of the lower + vms  
similar to 65-250

PLOTTED ON GEOLOGIC MAP  
JULY 15/68

A12247-15

105-N-10

