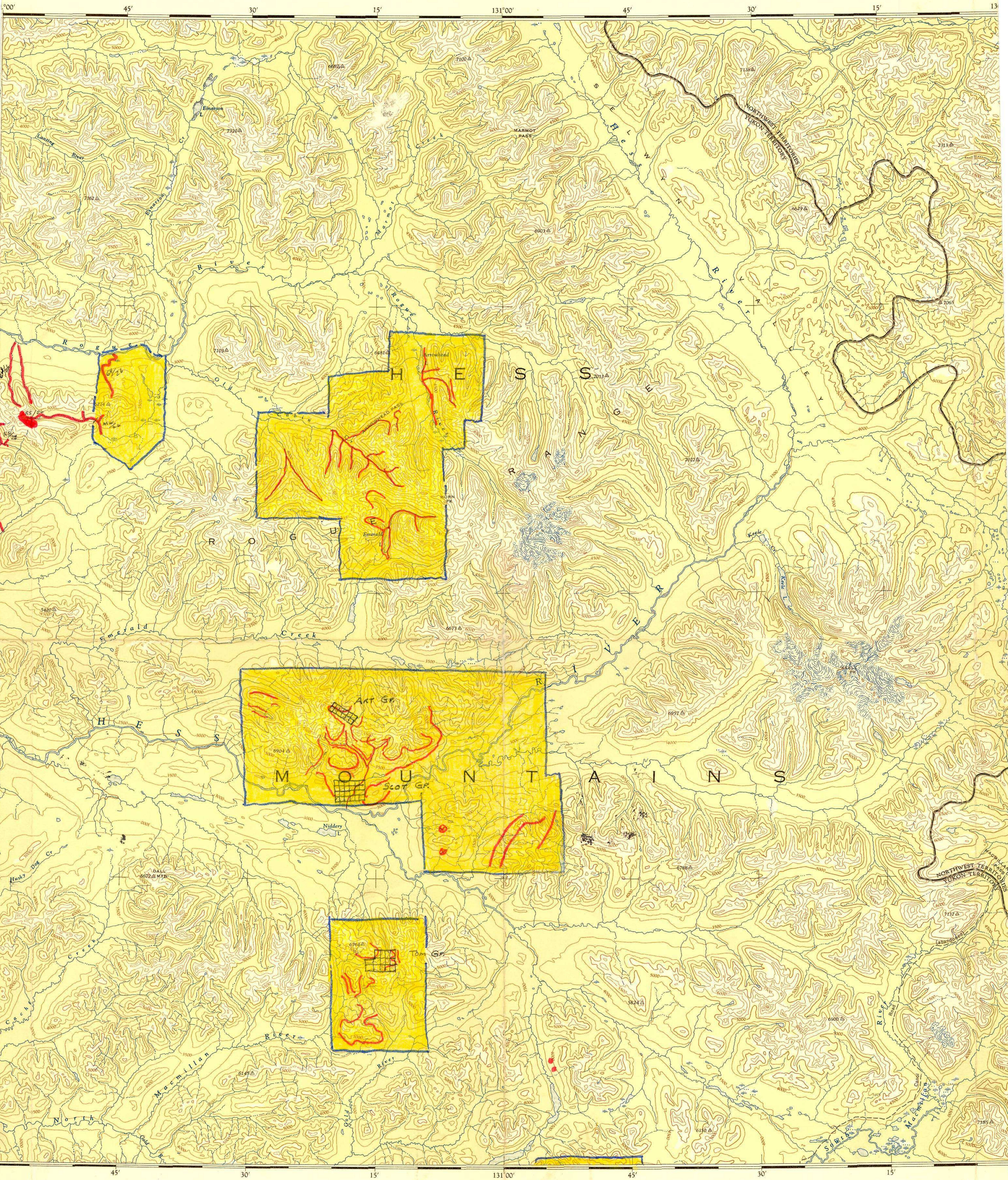


Streams will be signed shown in red.



NIDDERY LAKE
YUKON TERRITORY - NORTHWEST TERRITORIES

Scale 1:250,000
1 Inch to 4 Miles Approximately

105-0

018191

Produced and printed by the SURVEYS AND MAPPING BRANCH, DEPARTMENT OF MINES AND TECHNICAL SURVEYS, 1958, from air photographs taken in 1949 and 1954.

Universal Transverse Mercator Projection

Contour interval 500 Feet
Elevations in Feet above Mean Sea Level
North American Datum 1927.

Copies may be obtained from the Map Distribution Office, Department of Mines and Technical Surveys, Ottawa, at 25 cents each.

REFERENCE

- Wagon or winter road
- Trail or portage
- Boundary provincial
- Village or settlement
- Post office
- Building or cabin
- Horizontal control point
- Astronomical position
- Spot elevation (in feet)

REFERENCE

- Streams: intermittent or dry
- Glacier or snowfield
- Rapids; falls
- Marsh or swamp
- Contours: elevation
- depression
- approximate
- Forest

0 1 2 inches
0 1 2 centimetres

0 5 10 15 20 Miles
0 5 10 15 20 25 30 Kilometres

OF THE COMPASS NEEDLE 1957

The compass needle at any place is the declination given on that place; the declination is based on the neighbouring broken lines; marked A, the declination is based on 36°00' E. The declination of the needle is decreasing 5 minutes an

Index to Adjoining