

018255

105-K-  
2+3.

Geological  
Surveys

2025 - ~~gray sand~~  
- Pt. Walton

2026 - gray sand  
- Pt. Walton

2027 - same

2028 - same

2029 - gray clay  
- Leshore

2030 - brown clay,  
Leshore

2031 - Leshore at  
brown clay + sanding

2032 - same

2033 - Leshore  
brown clay

2034 - brown clay  
Leshore

2035 - sand + some  
organic stuff  
Lithore.

2036 - Lithore  
sand

2037 - Lithore  
Bun. Clay  
sand

2038 - grey sand  
Lithore

Aug 27/2

1181 - creek silt  
sand.  
- spring source.

1182 - street runoff  
sand

1183 - seepage  
oppry. L 72, Bl 30.

1184 - spring, Bl 30  
oppry. L 100  
sand

1185 - creek silt  
L 108

1186 - creek silt  
V. 140

1187 - seepage  
N of V. 140

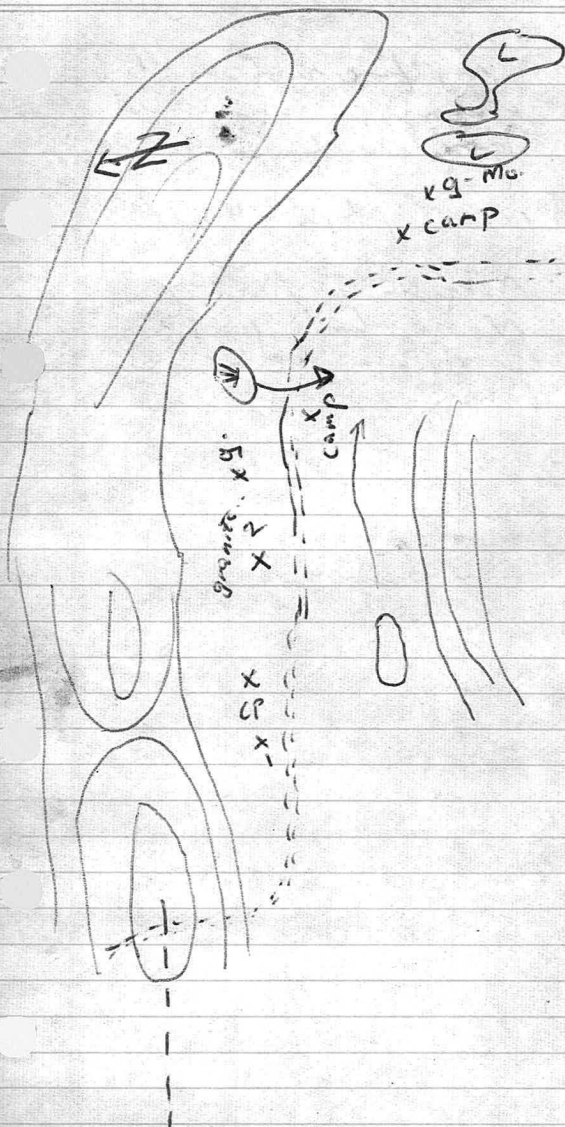
1188 - creek silt  
L. 140

1189 - seepage silt

1190 - creek silt.

S	M	T	W	Th	F	S
					13	14
15	16	17	18	19	20	21
22	23	24	25	26	27	28
29	30	31	1	(2)	(3)	(4)
(5)	6	7	8	9	10	11
12	13	14	15			

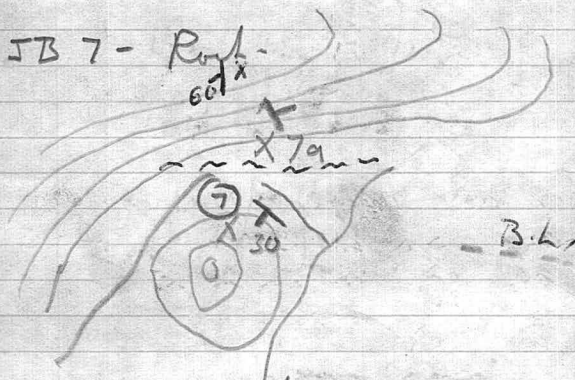
Sept 3



Sept 5 - Sunday.  
WEST CLAIMS

JB 6 - grey fine silt in slow  
drainage, not crossed  
more within class cross  
line.  
NE of phyllite + 3<sup>rd</sup> fault.

JB 7 - going NE off end of  
N cross line - good silt  
wood 1000' valley - brush  
brush.



well bedded cty. siltstone  
phyllite lens in part?

Sept 5/76

11:45 JB 8 set - post hole just N of  
ridge (7a) no o/c  
granite float, posthole beside  
meadow.

JB 9 post hole SW side of  
meadow ~ 600 feet from  
JB 8

granite? on N side of  
meadow

JB 10 set from slightly  
rusty swamp, tree stumps  
limonite stained.

JB 11 set from minor S. hill  
dig. SW of creek, creek  
minor lim stain between  
JB 10 & 11.  
note JB 11 prob. at swamp  
stream map.

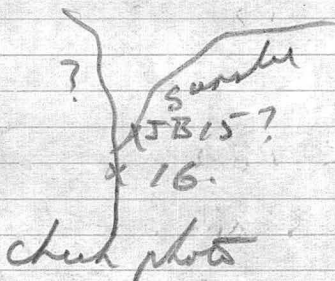
JB 12 - float of TZ M. Schist  
= set from post hole

12:50 JB 13 - post creek bank  
poor set, phyllite  
chips.

JB 14 - sandy silt  
are gone underground  
picket lines.

JB 15 - active silt

JB 16 - creek becomes large  
fast flowing.



JB 17 - side bank sand  
creek silt not any  
silt.

JB 18 - front have silt  
south side creek.

JB 19 - pair 'big bend'  
sand.

Sept 5/71

JB 20 Lake -

21 Lake -

22 Lake.

23 Lake -

24 Lake.

25 Lake.

26 Lake.

27 Lake.

28 Lake.

JB 29 - mouth of creek -  
red organic iron deposits.

Sept 6/71 - Monday.

West Claims

JB 30 - silt from 'pot hole' below  
Q-Phyl o/c.

R 30 QMICA SCH.

JB 31 Main Crk sandy silt  
above water, S bank  
granite boulders.

R 31 float, well round rust  
stain black gneissic boulders  
syn & perf. in quartz.  
N. side of creek

JB 32 sandy silt N bank crk  
in water.

B 33 sandy silt. S Bank  
@ waterline.

B 34 dry silt. dry side crk  
from S.

B 35 silt under moss S  
bank below sericite Veinite

R 35 quartz schist  
est. 500' W of contact  
dip vert to 90° S

Sept 6/74<sup>(2)</sup>

B 36 Silt from S Bank  
Creek mainly granite bldgs.

B 37 long fault? - silt  
built moose.

B 38 near old camp, end of  
rough cut trail  
near bend in creek.

B 39 side creek from north  
location uncertain ~ 100'  
E of B 38.

B 40 sandy silt near 2<sup>nd</sup> bend?  
in lower?

B 41 location unknown. drainage  
flows north.  
found N of pot hole lake.

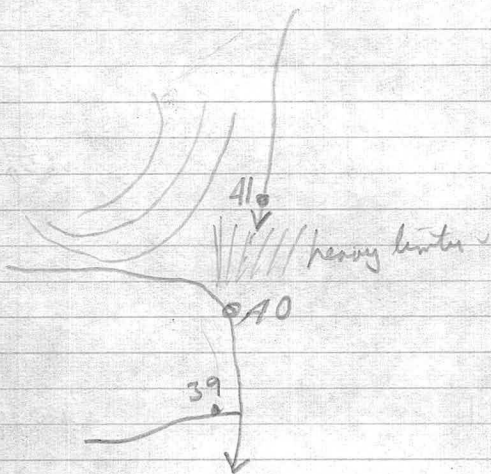
B 42 mucky dry side  
sep from sandw.

R 43 float about 1 mile  
NE of camp

Sept 26 / 71

R 4A o/c EW 5 hrs  
about 15-20° SW  
large 24" x 9"  
qty boulders

JB 43 - sort @ 4A



Sect. 6/21

R45

25 suns phyl

dy 25° W

# Sect 8

## Road Beta-Ace

TS 45 sets from road, slightly  
rusty. qty bottles schist floor

TS 62 - 500' up road.

TS 63 - rusty drainage in road  
bed, where ch. run along road

TS 64 - 1000' up road new  
drainage,

TS 65 ch. across road granite  
light limonite stain

TS 66 main ch. across road  
near divide  
gravel -

TS 67 small rusty dry from E  
Pd. still S of divide

TS 68 set on road, near divide  
dry. still flowing S

TS 69 set on road @ divide  
near old tin mine Corn  
Mills?  
course set

② Sect 8.

TS 70 on road, sluggish  
channel

- 71

- 72 rocky creek @ Ace DD cam

73 on road to airport

74 creek on lower end of  
arriving road.

75 sett on arriving road  
between creek and main  
road

76 200' from 75

77-79 - main rd

80 main rd. creek off L/S

81 400' from 80

Thursday Sept 9/71

Snow plumes in morning

Set samples old Beta - Vandyke Rd

TS 87 - sandy site near TS porch / foot

TS 88 - Creek off ridge - sample from  
main creek - parallel dry, dry  
bed is rusty.

TS 89 - Lower FRENCH Creek



- Exp. Acct

Sept 25

- Croquis - \$49<sup>11</sup>-
- Bat. box - 2 75
- lunch 1 55
- Coffee @ Kemlon 1 05
- Mopas ~ \$4 35
- Ruth Foss & Shery - 10-
- Sperry plane ticket 44-
- Gas for Fiat
- 9 mos. exp for Fiat.

Sept 26

- Croquis about \$20
- Fuel 11 95
- Film 5 50
- Cake Pan 1 83
- Beauty 89
- Milk -
- Gasoline 45 gallons. ch.