

VANGORDA GRUM
DIAMOND DRILL RECORDS

A-31 ~~to~~ 45

August/74 - Oct./74

018532

A31 to A45

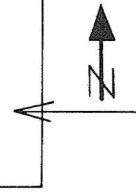
(Typed)

DIAMOND DRILL RECORD

LOGGED BY _____

PROPERTY _____
 LATITUDE _____ BEARING OF HOLE _____ STARTED _____
 DEPARTURE _____ DIP OF HOLE _____ COMPLETED _____
 ELEVATION _____ DIP TESTS _____ DEPTH Proposed: _____ Ultimate: _____

D.D.H. No. A - 31 PAGE 2 of 5

CLAIM No. _____

 DIRECTION AND DISTANCE FROM
 NE. CLAIM POST

FOOTAGE		DESCRIPTION	Rec. Ft.	Sample No.	Footage		Sample Length	Assay					Assay x Feet		
FROM	TO				From	To		Pb	Zn	Ag	Au	Cu	Pb	Zn	Ag
376.1	^{124.4m} 408.2	SULPHIDE ZONE in Bleached Quartz-Sericite Phyllite. The zone is composed of bleached buff and partly leached sericite with a few "tongues" or bands of grey sericite, also minor slightly graphitic phyllite. The sulphides occur as bands of massive sulphides at the upper and lower contact. The remaining core contains negligible sulphides. Moderate shearing occur at both contacts. Also within the near barren phyllites. Quartz breccia noted in massive sulphides. 376.1 - 380.5' upper sulphides, 50 pyrite, 3 lead, 9 zinc; 404.2 - 408.2' lower sulphides, 30 pyrite, 0.5 pyrrhotite, 2 lead + zinc. Core angles: 75° at 377' ¹¹⁵ ; 70° at 378-381' ¹¹⁶ ; 50° at 382-387' ¹¹⁸ ; 75° at 389-391' ¹¹⁹ ; 70° at 392-397' ¹²⁰ ; 50° at 398' ¹²¹ ; 40° at 402' ¹²² ; 60° at 403'; 75° at 406'; 70° at 408' ¹²¹	4.4	567	114.6 376.1	115.9 380.5	4.4	4.95	7.05	2.00					
			5.4/ 5.5			380.5	386								
			15/15 2.9/			386	401								
			3.2			401	404.2								
			3.7	568		404.2	408.2	4.0	1.33	1.18	.74				
						123.2	124.4								
408.2	^{133.6m} 438.5	QUARTZ-GRAPHITE PHYLLITE. 70% quartz, 25% graphite. Dark grey to black, fissile. Tight shears on slips at 30° to 35° to core, locally contorted. F ₁ prominent at 90° to F ₂ where banding is wider and distinct - quartzose layers. 0.1% pyrite in streaks parallel F ₂ , also F ₁ and concentration of pyrite at 409, 430'-430.5' and at 432.5-433'; pyrrhotite, lead-zinc noted. Core angle: 55° at 409'; 40° at 411'; 25° at 412'; 50° at 415'; 25° at 418.5'; 35° at 420.5'; 50° at 421'; 55° at 423'; 65° at 428'; 70° at 431'; 60° at 434'; 65° at 436'	6.3/ 6.3												
			19/22			408.2	414.5								
			1/2			414.5	436.5								
						436.5	438.5								
438.5	^{136. m} 446.5	SULPHIDE ZONE in quartz-sericite-graphite phyllite. Sulphides occur as massive and disseminated mineralization in quartz-sericite with minor graphitic phyllite at upper and lower ends. Minor local concentrations of magnetite and pyrrhotite. 20-40 pyrite, 4-6 lead + zinc, with spots copper. Core angles: 85° at 439'; 60° at 440'; 65° at 441'; 60° at 442-446'	1	569	438.5	441	2.5	1.68	1.62	.59					
			4.6	570	441	446.1	5.1	1.15	1.35	.59					
			.4/.4			446.1	446.5								
446.5	^{137.7m} 452	QUARTZ-SERICITE-GRAPHITE PHYLLITE. Alternating sections of bleached buff sericite and grey sericite with 1% graphite.	4.1/ 5.5												
						446.5	452								

DIAMOND DRILL RECORD

LOGGED BY Fred Chow

PROPERTY Vangorda - Kerr Addison - AEX - Joint Venture

D.D.H. No. A - 33 PAGE 1 of 4

LATITUDE 10 275.72 N 2400S BEARING OF HOLE _____ STARTED Aug. 29/74 D.S. _____

CLAIM No. HANK 4 FRACTION

DEPARTURE 7874.24 E 56+03 DIP OF HOLE - 90° COMPLETED Sept. 6/74 D.S. _____

DIRECTION AND DISTANCE FROM _____

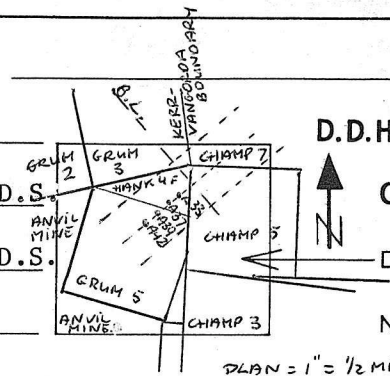
ELEVATION 4136' A.S.L. DIP TESTS _____ DEPTH Ultimate: 718'

NE. CLAIM POST

(1373.24 m)

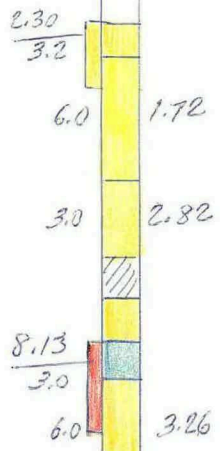
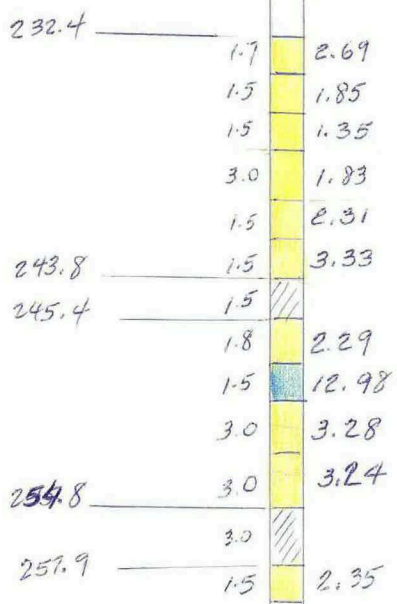
HOLE SIZE: 0-157' NQ, 157-169' BW, 169-718' BQ

(218.85 m)



FOOTAGE		DESCRIPTION	Rec. Ft.	Sample No.	Footage		Sample Length	Assay					Assay x Feet					
FROM	TO				From	To		Pb	Zn	Ag	Au	Cu	Pb	Zn	Ag			
0	50.90 167	OVERBURDEN - mainly granitic boulders to 154', probably sand + maybe fine gravel from 154-167'	6/15		0	15												
			23/139		15	154	46.9											
			0/13		154	167												
167	92.35 303	QUARTZ-SERICITE PHYLLITE. Light "dirty" grey, striped by quartzose bands, often kinky. Rock siliceous - 80-85% quartz-feldspar. Highly folded, F ₁ prominent, F ₂ well defined. Negligible sulphides. A few slips, tension cracks not numerous but continuous through section nearly always at 90° to foliation. Core angle 60° at 167-303'	44/47		167	214												
			17/20		214	234												
			7.6/8		234	242												
			60/61		242	303												
303	316 96.3	QUARTZ-SERICITE PHYLLITE. As above section but brown-grey from about 1-5% brown mica. Core angles: 70° at 304'; 65° at 306'; 55° at 307'; 60° at 309'; 70° at 311'; 60° at 320'; 70° at 323'	13/13		303	316												
316	331 100.9	QUARTZ-SERICITE PHYLLITE. As 154-303' but slightly altered, many tension cracks 70-90° to foliation. Shear at 327.5-331' with quartz and feldspar(?) breccia. Core angles: 60° at 320'; 70° at 323'; 75° at 325'; 55° at 327'; 40° at 329'	9.8/10		316	326												
			4.5/5		326	331	100.8											
331	103.7 340.2	QUARTZ-SERICITE-GRAPHITE PHYLLITE. "Dirty" grey sericite with section (333-335.2') of slightly graphitic phyllite. Altered with many fractures. Bleached sericite at 340-340.4'. Sheared at 331.5-333' at 30° to core. Core angles: 65° at 333'; 75° at 334-339'; 40° at 340'	9.2/9.2		331	340.2												
103.6 340.2	107.6 353	SULPHIDE ZONE IN QUARTZ-GRAPHITE PHYLLITE. Banded sulphides in quartzose graphite phyllite. Average 8-10% pyrite. 340.2 - 344.5' 3 lead, 6 zinc	5.3	576	340.2	345.5	1.6 5.3	1.08	1.56	.50				13.98	PbZn			
		349.0' 1 lead, 2-5 zinc	3.5	577	345.5	349	3.5/0 2.6	.35	.58	.29				3.25	-			
		351.6' 1-2 lead-zinc, sheared, gouge and breccia	1.9	578	349	351.6	2.6	.20	.11	.15				.80	-			
		353.0' 0.5 lead zinc, sheaved, gouge and breccia	.8	579	351.6	353	1.4 0.4	.49	.58	.29				1.49	-			
		Core angle: 55° at 340.5'; 60° at 342'; 40° at 343'; 65° at 344'; 75° at 347.5'			340.2	353.0	12.8	1.52	PbZn					19.52	PbZn			
					345.5	353.0	7.5	0.74						5.54				

A-34
 (15-91W)
 103W
 104W



DIAMOND DRILL RECORD

LOGGED BY _____

PROPERTY _____
 LATITUDE _____ BEARING OF HOLE _____ STARTED _____
 DEPARTURE _____ DIP OF HOLE _____ COMPLETED _____
 ELEVATION _____ DIP TESTS _____ DEPTH Proposed: _____ Ultimate: _____

D.D.H. No. A - 34 PAGE 3 of 5

CLAIM No. _____



DIRECTION AND DISTANCE FROM

NE. CLAIM POST

FOOTAGE		DESCRIPTION	Rec. Ft.	Sample No.	Footage		Sample Length	Assay					Assay x Feet				
FROM	TO				From	To		Pb	Zn	Ag	Au	Cu	Pb	Zn	Ag		
209.7 688	215.8 708	GREY-GREEN Fine grained CHLORITE-SERICITE-QUARTZ PHYLLITE. Quite micaceous, less quartz-feldspar laminae though these define F2 folds - 691'; Thin black graphite-phyllite band at 702.5-703.5. Minor buff carbonate. Core angles: 690=80; 700=68	12/20		688	708											
708	741 225.8	GREY QUARTZ-SERICITE PHYLLITE. Core angles 710=72; 720=62; 730=72; 740=72	28/33		708	741											
741	232.4 762.5	PALE GREY-GREEN QUARTZ-SERICITE-CHLORITE PHYLLITE. Pale, possibly altered bleached slightly. Buff carbonate in foliation. Note. sphalerite, galena, blebs in white barite? or carbonate vein at 745.5'. Quart veins 755-57. Core angles: 750=67; 757= subvertical fold nose; 760=70°	/21.5		741	762.5											
762.5	259.9 853	SULPHIDE ZONE IN MAINLY BLACK STRIPED GRAPHITIC PHYLLITE with local zones of grey quartz-chlorite phyllite with turquoise mariposite. 762.5 - 768 Black striped graphitic phyllite and green sericite-chlorite phyllite. mineralization-band of pyrrhotite, chalcopyrite, minor sphalerite, galena, and weak mineralized phyllite with purple sphalerite, galena, pyrite. Minor chalcopyrite 3% lead zinc Core angle 766-65°	5/5.5	1157	232.4 762.5	768	(1.7) 5.5	.75	1.94	.32			4.125	10.67	1.76		
		762.5 - 768 Black striped graphitic phyllite and green sericite-chlorite phyllite. mineralization-band of pyrrhotite, chalcopyrite, minor sphalerite, galena, and weak mineralized phyllite with purple sphalerite, galena, pyrite. Minor chalcopyrite 3% lead zinc Core angle 766-65°	5/5	1158	768	770	(1.5) 5	.83	1.02	.29			4.15	5.1	1.45		
		770-75: Breccia, mineralized quartz rich graphitic phyllite: pyrite sphalerite, minor galena pyrrhotite: 3-4% sulphide: 1-3% lead zinc: Core angle 770-57°, breccia	5/5	1159	775	780	5(1.5)	.79	.56	.24			3.95	2.8	1.2		
		775-780 Weak mineralized grey and green mariposite phyllite	9/10	1160	780	790	10(3.0)	.63	1.20	.26			6.3	12.0	2.6		
		1% lead zinc	5/5	1161	790	795	5(1.5)	.87	1.44	.38			4.35	7.2	1.9		
		780-790 Weak mineralized grey phyllite: striped: 2-3% pyrite; minor sphalerite, galena	5/5	1162	795	800	5(1.5)	.75	2.58	.41			3.75	12.9	2.05		
		790-795 Weak mineralized grey phyllite 1-3% sulphide: pyrite, sphalerite, galena: 1% lead zinc	6/6	1163	800	805	6(1.8)	.69	1.60	.29			4.14	9.6	1.74		
		795-800 Weak mineralized graphitic phyllite. Blebby pyrite, sphalerite, galena 3-4%; 1-3 lead zinc	5/5	1164	811	816	5(1.5)	3.68	9.30	1.76			18.40	46.50	8.80		
		800-805 Graphitic phyllite	10/10	1165	816	826	10(3.0)	1.30	1.98	.59	(20.23)		13.0	19.80	5.90		
			10/10	1166	826	836	10(3.0)	1.38	1.86	.59	(")		13.80	18.60	5.90		
			5/5		836	846											
			5/5	1167	846	851	5	1.03	1.32	.44			5.15	6.60	2.2		
					851	853											
					780.0	800.0	20.0	2.33	Pb Zn	wt. Av.			46.50				
					816.0	821.0	5.0						6.50	9.90	2.95		
					770		20.0	1.71	Pb				14.40	19.9			

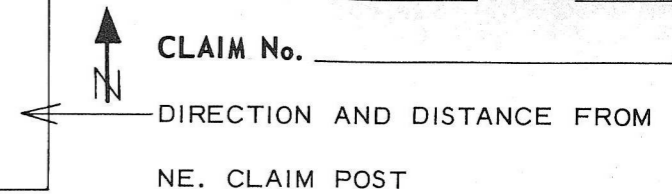
DIAMOND DRILL RECORD

LOGGED BY _____

PROPERTY _____
 LATITUDE _____ BEARING OF HOLE _____ STARTED _____
 DEPARTURE _____ DIP OF HOLE _____ COMPLETED _____
 ELEVATION _____ DIP TESTS _____ DEPTH Proposed: _____ Ultimate: _____

D.D.H. No. A - 35 PAGE 3 of 4

CLAIM No. _____



FOOTAGE		DESCRIPTION	Rec. Ft.	Sample No.	Footage		Sample Length	Assay					Assay x Feet		
FROM	TO				From	To		Pb	Zn	Ag	Au	Cu	Pb	Zn	Ag
566	285.6 937	GREY-GREEN STRIPED QUARTZ-FELDSPAR CHLORITE-SERICITE PHYLLITE. <i>CS</i> Chlorite rich laminae alternate with white quartz-feldspar laminae: dominant F ₂ ; F ₁ layers locally subvertical to F ₂ . Quartz veins with green chlorite-blebs. Tension gashes with quartz-feldspar 920' Note biotite at 670, 923-931 with chlorite-sericite-quartz-feldspar. Minor pyrite, pyrrhotite. Core angles: 580=60; 600=71; 620=70; 640=70; 660=65; 680=76; 700=75; 720=67; 740=77, 760=77; 780=84; 800=75; 820=76; 840=81; 860=82; 880=85; 900=81; 920=73; 940=	98%	<i>WT. AV</i>	548.0 530.0	562.6 562.6	14.7 22.7	4.00 4.01	3.78 3.94	1.06 1.66	<i>WT. AV</i> (56.9% <i>wt.</i>)	58.434 91.039	55.216 80.496	21.238 37.578	
937	290.2 952	SULPHIDE ZONE in sericite phyllite, and striped quartz-feldspar graphite phyllite. Pyritic bands (3-5 mm) in phyllite foliation: 40-50% sulphide pyrite, with minor sphalerite, galena, chalcopyrite, magnetite. 2-3 lead zinc. Core angle 940=74° <i>(S) P</i>	9/10 4/5	659 660	937 947	947 952	10 5	.83 1.25	.72 .86	.44 .53					
952	1068.1 325.6	DARK GREY BLACK, STRIPED GRAPHITIC PHYLLITE. Thin quartz-feldspar laminae. Blebs of pyrrhotite-pyrite, tension gashes locally 1039' Core angles: 960=76°; 980=66°; 1000=56°; 1020=67°; 1040=85°, 1060=87°. Note 995-1008 - 75% recovery. Rest 98% <i>G</i>		<i>WT. A</i>	937.0 952.0	952.0 1068.1	15.0	1.83	<i>PbZn</i>						
1068.1	1083.8 330.3	STRIPED BLACK GRAPHITE PHYLLITE, with thin bands (maximum 2.5') of MASSIVE PYRITE. Minor pyrrhotite. Core 1080=62° <i>G(M)</i>	53/53	661	1068.1 1073.4	1073.4 1076	5.3	.13 <i>Trace Pb, est</i>	.06	.15					
		1068.1' - 1073.4' = 3.5% <i>py</i> 1076 - 1078 = 5% <i>py</i> 1081.5 - 1083.8 = 1% <i>py</i> } = 25% <i>sulphs</i> ?	2/2	662	1076 1078	1078 1081.5	2.0	1.10 <i>Trace Pb, est</i>	1.18	.68					
1083.8	367.9 1207	SULPHIDE ZONE in GREY RIBBON LIKE. Quartz-feldspar GRAPHITIC and GREY PHYLLITES. Fracture filling - white tetrahedral carbonate? Mineralization: Mainly fine grained disseminated pyrite with lesser pyrrhotite, sphalerite, galena and magnetite concentrated in F ₁ layers. 10% sulphide in quartz-feldspar ribbon phyllite. Massive pyritic sulphide bands at: 1053.8 - 1111' = 10% <i>py</i> . 1113.6 - 1128' = 5% <i>py</i> . <i>(G) P</i>	23/23 44/44	663 664	1081.5 1083.8	1083.8 1088.2	2.3 4.4	.20 1.23	.14 1.02	.03 .56		.78 <i>PbZn</i> 9.99 <i>PbZn</i>			
		98/98 95/95	665 666	1088.2 1098	1098 1107.5	9.8 9.5	.53 .75	.56 .63	.29 .26		10.68 <i>PbZn</i> 13.10 <i>PbZn</i>				
		6/6 62/62	667 668	1107.5 1113.5	1113.5 1119.7	6 6.2	2.10 1.35	2.58 2.00	.77 .59	-	12.60 5.4	15.48 8.00	4.62 2.36		
		1119.7 1126.6	669	1119.7 1126.6	1126.6 1128.2	6.9 1.6	1.05 <i>Pb est</i> .48			.32					

DIAMOND DRILL RECORD

LOGGED BY _____

PROPERTY _____
 LATITUDE _____ BEARING OF HOLE _____ STARTED _____
 DEPARTURE _____ DIP OF HOLE _____ COMPLETED _____
 ELEVATION _____ DIP TESTS _____ DEPTH Proposed: _____ Ultimate: _____

D.D.H. No. A - 35 PAGE 4 of 4

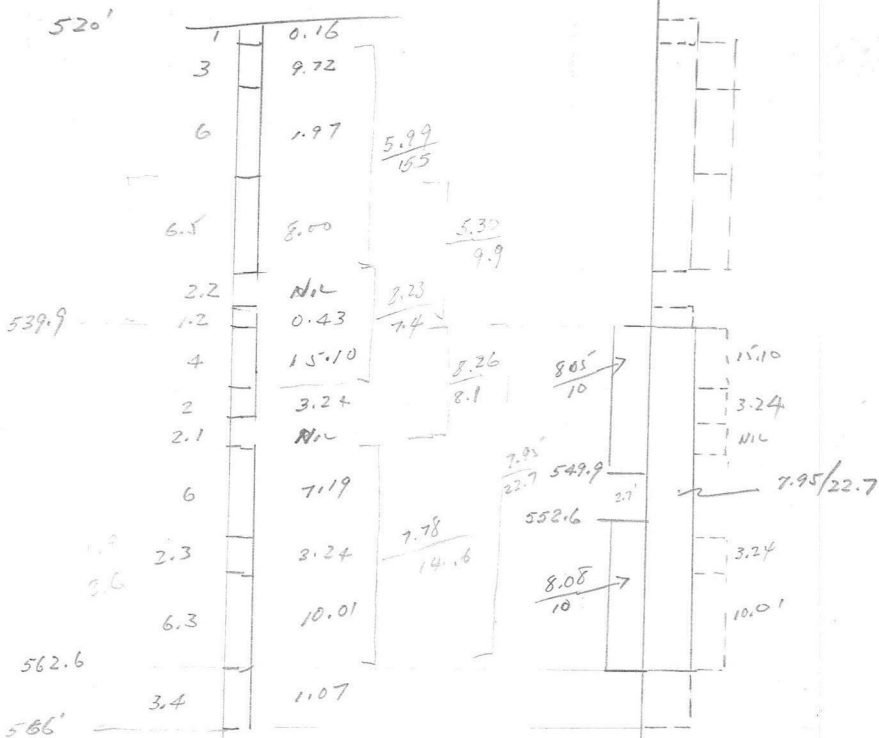
CLAIM No. _____



DIRECTION AND DISTANCE FROM

NE. CLAIM POST

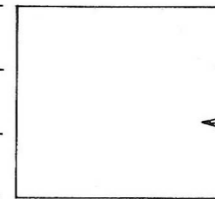
FOOTAGE		DESCRIPTION	Rec. Ft.	Sample No.	Footage		Sample Length	Assay					Assay x Feet		
FROM	TO				From	To		Pb	Zn	Ag	Au	Cu	Pb	Zn	Ag
		gashes) magnetite (1%)	9.8/9.8	670	1128.0	1128.2	.2	3.83	4.44	1.32			.76	.88	.26
		1128-1138.7 massive banded (pyrite, barite, sphalerite, galena, chalcopryite, thin schist partings. <i>20-40%</i>)	3/3	671	1128.2	1138	9.8	3.83	4.44	1.32			37.53	43.51	12.94
		1138.7 - 1168.8 = 11 Py	4.0	672	1141	1145	4	1.25	1.74	.44			2.76	Pb2n	
		1168.8 - 1171.5 massive pyrite (70%) sphalerite, galena, magnetite concentrated in F ₂ folds 60% sulphide	10/10	673	1145	1155	10	.27	.52	.18			7.90	Pb2n	
		1171.5 - 1185 = 15 Py, 1185-1189 = 0.5 Py	10/10	674	1155	1165	10	.15	.58	.15			7.30	Pb2n	
		1189 - 1196.8 = 2 Py			1165	1168	3	Weak mineralized			phyllite 5%	pyrite <1	Pb	Zn	
		1196.8 - 1207 massive pyrite, pyrrhotite. Last 3'. Breccia with pyrrhotite, pyrite, galena (40% pyrrhotite). Circular fragments of white sulphate?? hardness 4-5	2.7/2.7	675	1168.8	1171.5	2.7	3.75	3.90	1.35					
		Core angles 1100=59°; 1120=67°; 1140=56°; 1160=68°; 1180=76°; 1200=65°	3.5/3.5	676	1171.5	1175	3.5	.20	.37	.12					
			10/10	677	1175	1185	10	.17	.44	.12					
					1185	1196.8		Weak mineralized			graphitic phyllite				
			5.2/5.2	678	1196.8	1202	5.2	1.80	1.60	.65			17.63	Pb2n	
			5/5	679	1202	1207	5.0	1.75	1.42	.59			15.85	Pb2n	
1207	389.8 1279	BLACK FINE GRAINED GRAPHITIC PHYLLITE. Phyllite has abundant fracture, tension fillings to 1247'. Minor blebs of pyrite. Note from 1260-1279 phyllite slightly less graphitic (more chlorite present) Core angles: 1220=75; 1240=76; 1260=74; 1279=76			1081.5	1107.5	26.0	1.32	Pb2n		Wt. Av.		34.46	Pb2n	
					1107.5	1118.3	10.8	1.77	2.32	0.69 (23.75m)			18.0	23.48	6.98
			98%		1107.5	1117.5	10.0	1.80	2.35	0.7	Wt. Av.				
					1127.2	1139.0	10.8	3.52	4.08	1.23 (42.1m)					
					1128.0	1138.0	10.0	3.83	4.44	1.32	Wt. Av.		38.29	44.39	13.19
	1279	END OF HOLE			1138.0	1165.0	27.0	1.108	Pb2n		Wt. Av.		29.92	Pb2n	
					1171.5	1185.0	13.5	0.63	Pb2n		Wt. Av.				
					1196.8	1207.0	10.2	3.28	Pb2n		Wt. Av.		33.53	Pb2n	



DIAMOND DRILL RECORD

LOGGED BY _____

PROPERTY _____
 LATITUDE _____ BEARING OF HOLE _____ STARTED _____
 DEPARTURE _____ DIP OF HOLE _____ COMPLETED _____
 ELEVATION _____ DIP TESTS _____ DEPTH Proposed: _____ Ultimate: _____



D.D.H. No. A - 36 PAGE 2 of 6

CLAIM No. _____



DIRECTION AND DISTANCE FROM

NE. CLAIM POST

FOOTAGE		DESCRIPTION	Rec. Ft.	Sample No.	Footage		Sample Length	Assay					Assay x Feet				
FROM	TO				From	To		Pb	Zn	Ag	Au	Cu	Pb	Zn	Ag		
		63.4 - 72.8 grey sericite, 3 pyrite, 1 pyrrhotite, 1-1.5 lead zinc chlorite rich															
		75.7 grey sericite, 3 pyrrhotite, 2 pyrite, 2-3 lead zinc chlorite rich															
		Core angles: 60-70° at 55'; 40° at 57.5'; 35° at 59'; 20° at 60'; 45° at 61'; 50° at 63'; 60° at 64'-70'; 55° at 72-75'															
	36.8																
75.7	121	QUARTZ-SERICITE-CHLORITE PHYLLITE. Light greenish-grey, slightly lighter color than section above, and more greenish looking due to increase in chlorite content (15% chlorite, 15 sericite, 60-70% quartz, 1-3% sulphides). 1-3% pyrrhotite occurring as threads and thin bands mainly also as blebs, magnetic, less than 0.5% pyrite; spots and thin bands sphalerite and galena and spots chalcopryrite. Core angles: 60° at 77'; 70° at 87'; 70°-40-60° at 91-93'; 70° at 95'; 55° at 96-99'; 70° at 101'; 65° at 113'; 60° at 115'; 75° at 118-121'	44.5/ 45.3		75.7	121											
	39.5																
121	129.8	QUARTZ-SERICITE-CHLORITE PHYLLITE. Pale green-grey, more sericitic and chloritic than above section. Also less sulphide (0.5%). Rock moderately altered with bands bleach buff sericite. Core angles: 70° at 122'; 65° at 125'; 50° at 128'	8.5/ 8.8		121	129.8											
129.8	131.7	QUARTZ-SERICITE-GRAPHITIC PHYLLITE. Quartzose phyllite with grey and graphite, buff color sericite. 2-9% pyrrhotite as blebs and 1% pyrite as blebs and streaks, 0.6% sphalerite and galena. Core angles: 75° at 130'; 60° at 31'	1.9	205	129.8	131.7	1.9	.67	.94	.47							
	42																
131.7	137.8	MASSIVE SULPHIDES. Massive pyrite (75%) at 131.7-132.2' and 133.7-137.8' with 2% pyrrhotite, 1-1.5% magnetite, minor chalcopryrite, 4.5 lead, 9 zinc. Massive pyrrhotite (85%) at 132.2-133.7' with minor pyrite, 0.15 copper, 3-5 lead zinc. Banding faint. Both contacts sharp parallel f2. Core angles: 50-30° at 132-132.5'; 35° at 133'; 70-75° at 134-138'	5.9	AEX 206	131.7	137.8	6.1	3.00	1.34	.97							

DIAMOND DRILL RECORD

LOGGED BY Stanley B. Reamsbotten

PROPERTY Vangorda - "Champ" Zone, Kerr AEX Joint Venture

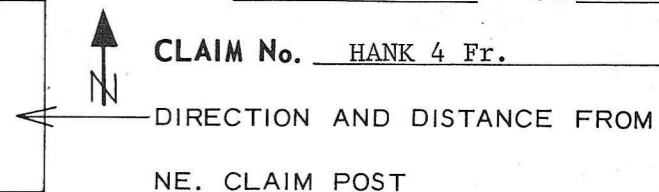
D.D.H. No. A - 37 PAGE 1 of 4

LATITUDE 10 232.49 N BEARING OF HOLE 440 S STARTED Sept. 9, 1974 D.S.

DEPARTURE 7.833.75 E DIP OF HOLE 56 W - 90° COMPLETED Sept. 15, 1975

ELEVATION 639' P.A. Topog. DIP TESTS _____ Proposed: _____
4112' A.S.L. (1266.44m) DEPTH Ultimate: 520' (158.50m)

HOLE SIZE: 0-10' NW, 10'-95' BW, 95'-520' BQ



FOOTAGE		DESCRIPTION	Rec. Ft.	Sample No.	Footage		Sample Length	Assay					Assay x Feet				
FROM	TO				From	To		Pb	Zn	Ag	Au	Cu	Pb	Zn	Ag		
0	28.34 93	OVERBURDEN															
93	32.91 108	PALE GREY GREEN QUARTZ-CHLORITE-SERICITE PHYLLITE. <i>CS</i> Rusty weathering															
108	35.96 118	PALE GREEN MEDIUM GRAINED MOTTLED CHLORITE-QUARTZ-FELS PHYLLITE. <i>C</i> Phyllite has augen texture. Lenses of quartz-fels wrapped around by green-grey chlorite sericite. Core angle: 100' = 77°;	98%														
118	43.89 144	GREY SERICITE-CHLORITE-PHYLLITE. Good F ₂ foliation. Local veins <i>Sc</i> (2 cm) of quartz and buff carbonate. Core angle: 120 = 66° 140 = 69°	98%														
144	51.81 170	DARK GREY MODERATE GRAPHITIC QUARTZ-SERICITE-PHYLLITE. <i>GS</i> Good F ₂ folds, buff layers of carbonate and quartz. Also chlorite-quartz veins. Core angle: 160 = 45°	90%														
170	65.22 214	DARK GREY STRIPED QUARTZ-SERICITE-CHLORITE PHYLLITE. Rock not <i>Sc</i> as graphitic as above unit - though some local graphite. Quartz veins from 199'. Minor phyrrotite-pyrite Core angle: 180 = 79° 200 = 85°	99%														
214	414	SULPHIDE ZONE: Banded, massive pyritic sulphides, and banded <i>M</i> mineralized quartz-sericite or striped quartz-fels graphitic phyllites. Local zones of cream quartz-fels-pyrite breccia Core angles in massive sulphides (265-275_ subvertical - so at F ₂ fold noses															
DETAIL:																	
214	71.63 235	Pyritic sulphide in brecciated white quartz-sericite-phyllite with <i>PX</i> local brecciated veins of buff carbonate. 25% Pyrite: lesser, galena aspyrite, sphalerite 3-4 lead-zinc. Core angle: 220 = 64°	9.8/10 6.9/7 4/4	680 681 682	214 224 231	224 231 235	10 7 4	.97 .77 .35	1.12 .74 .72	.47 .44 .29							

214 235 21.0 1.70 Pb2n WT.AV. 35.75 Pb2n ✓

DIAMOND DRILL RECORD

LOGGED BY _____

PROPERTY _____

D.D.H. No. A - 37 PAGE 2 of 4

LATITUDE _____ BEARING OF HOLE _____ STARTED _____

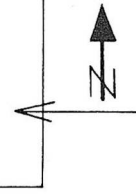
CLAIM No. _____

DEPARTURE _____ DIP OF HOLE _____ COMPLETED _____

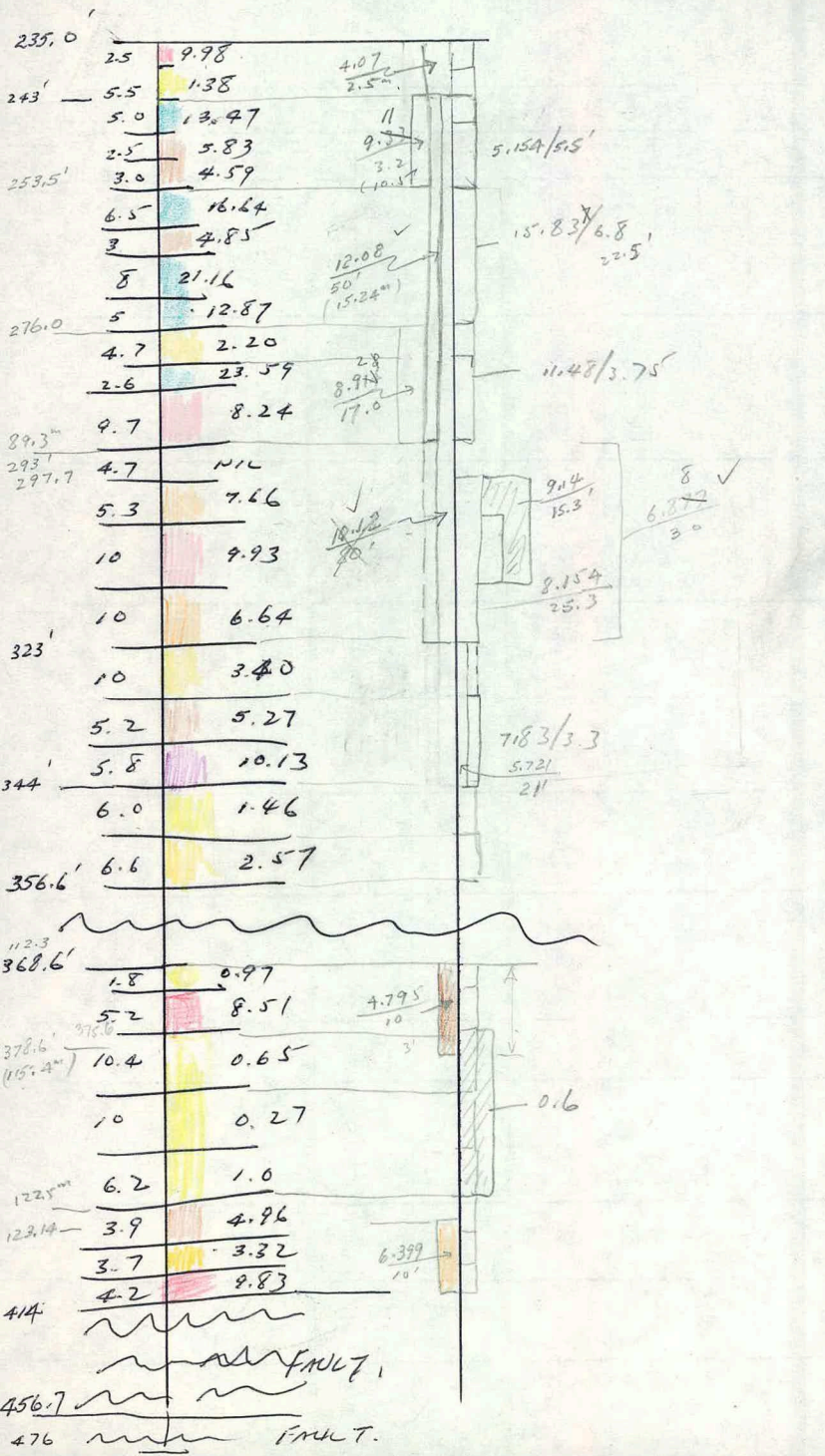
DIRECTION AND DISTANCE FROM

ELEVATION _____ DIP TESTS _____ DEPTH Proposed: Ultimate:

NE. CLAIM POST



FOOTAGE		DESCRIPTION	Rec. Ft.	Sample No.	Footage		Sample Length	Assay					Assay x Feet		
FROM	TO				From	To		Pb	Zn	Ag	Au	Cu	Pb	Zn	Ag
71.63 235	86.85 283.3	Massive banded pyritic sulphide: 80% Pyrite, locally sphalerite galena rich. Brecciated buff pyrrhotite zones in sulphide. Core angle: 240 = 69°; 260 = 55°; 260-270 - subvertical fold nose: 280 = 55°. Note local grey galena, dark red sphalerite bands. Porous sulphide in high grade zones.	2.5/ 2.5	683	235	237.5	2.5	4.58	5.40	1.76			11.45	13.5	4.4
			5.5/ 5.5	684	237.5	243	5.5	.68	.70	.53			3.74	3.85	2.91
			5/5	WT. AV. 685	235.0 243	243.0 248	8.0 5.	1.90 7.35	2.17 6.12	.91 2.15	(31.8%)		15.19 36.75	17.35 30.6	7.31 10.75
			2.5/ 2.5	686	248	250.5	2.5	2.23	3.60	.88			5.57	9.0	2.2
			3/3	687	250.5	253.5	3.0	2.63	1.96	.88	(50.7%)		7.89	5.88	2.64
			6.5/ 6.5	688	243.0 253.5	253.5 260	10.5 6.5	4.78 7.20	4.55 ³³ 9.44	1.48 1.85	WT. AV.		50.21 46.8	45.48 61.36	15.59 12.02
			3.0/ 3.0	689	79.2m 260	80.2m 263	3.0	2.03	2.82	.65			6.09	8.46	1.95
			8.0/ 8.0	690	263	271	8.0	8.41	12.75	2.79			67.28	102.0	22.23
			4.9/5	691	271	276	5.0	5.55	7.32	1.68	(6.9%)		27.75	36.6	8.40
			4.7/ 4.7	692	253.5 276	276.0 280.7	22.5 4.7	6.57 1.04	9.26 1.16	1.98 .50	WT. AV.		147.92 4.89	208.42 5.48 ⁵	44.6 2.35
		2.6/ 2.6	693	280.7	283.3	2.6	9.39	14.20	2.97			24.41	36.92	7.72	
283.3	96.44 316.4	SULPHIDE ZONE in pale-cream-green quartz-chlorite-sericite phyllite Thin bands of sphalerite, pyrite, barite, rich sulphides in quartz-fels cream phyllite; Local turquoise-green mariposite. Sphalerite pale amber color. Grade 8 lead-zinc. 15% pyrite. Also have thin bands (1-2') of massive pyritic sulphide in the phyllite. These have grade 4-5 lead-zinc: Core angles: 300' = 67°; 320 = 60°; F ₂ folds, F ₁ subvertical	9.7/ 9.7	694	283.3	293	9.7	2.78	5.46	1.03			26.9 ⁷	52.96	9.99
			4.7	--	280.7 293	293.0 297.7	12.3 --	4.17	7.31	1.44	WT. AV.		51.37	89.98	17.71
			4/5.3	WT. AV. 695	276.0 297.7	293.0 303	17.0 5.3	3.31 2.50	5.61 5.16	1.18 1.03	(40.5)		56.28 ¹ 13.25	95.33 27.34	20.06 4.46
			7.0/ 10.0	696	303	313	10.0	4.05	5.88	1.41	(11.5%)		40.5	58.8	14.1
			10.0/ 10.0	697	297.7 313	313.0 323	15.3 10.0	3.51 2.50	5.63 4.14	1.21 1.09	WT. AV. (37.4%)		53.75 25.00	86.14 41.40	18.50 ⁴ 10.90
				WT. AV. WT. AV.	243.0 243.0	293.0 323.0	50.0 80.0	5.09 4.16	6.99 5.96	1.61 1.37	(55.0) (47.0) ^{9m}		254.39 333.14	349.30 416.84	80.25 109.71
				WT. AV.	293.0	323.0	30.0	2.63	4.25	0.98	(32.7)		78.75	127.54	29.46

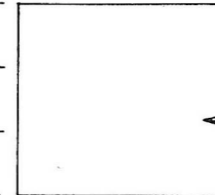


DIAMOND DRILL RECORD

LOGGED BY _____

D.D.H. No. A - 38 PAGE 3 of 5

PROPERTY _____
 LATITUDE _____ BEARING OF HOLE _____ STARTED _____
 DEPARTURE _____ DIP OF HOLE _____ COMPLETED _____
 ELEVATION _____ DIP TESTS _____ DEPTH Proposed: _____ Ultimate: _____



CLAIM No. _____
 DIRECTION AND DISTANCE FROM
 NE. CLAIM POST

FOOTAGE		DESCRIPTION	Rec. Ft.	Sample No.	Footage		Sample Length	Assay					Assay x Feet			
FROM	TO				From	To		Pb	Zn	Ag	Au	Cu	Pb	Zn	Ag	
740	230.6 756.5	BARITE RICH SULPHIDE ZONE. Banded sphalerite rich sulphides. <i>P. In</i> Locally contorted F ₂ folds in zinc, pyrite rich zones (741). Sphalerite pale orange-brown to purplish 25% Barite, 10% Pyrite, 8 - 11 lead-zinc; 1 - 2% magnetite at 750'. Core angle: 750' = 50°	8.0/ 8.0	717	740	748	8.	8.25	8.55	2.53						
			8.5/ 8.5	718	748	756.5	8.5	5.63	7.61	2.06						
				<u>Wt. Av.</u>	740.0	756.5	10.5	6.90	8.07	2.25	(77.1 ^{gms} / ₁₀₀)		113.85	133.15	37.75	
756.5	273.7 898	GREY, GREENISH STRIPED QUARTZ-SERICITE-CHLORITE PHYLLITE. Well <i>Sc</i> defined F ₂ plication. F ₁ laminae locally subvertical. Minor blebs of pyrrhotite. Core angles: 760' = 40°; 780' = 61°; 800' = 55°; 820' = 75°; 840' = 77°; 860' = 77°; 880' = 65°.		—	756.5	898.0	—									
898	293.5 963	SULPHIDE ZONE IN QUARTZ FELDSPAR RIBBON GRAPHITIC PHYLLITE. <i>M</i> Massive sulphide bands and mineralized phyllite; with thin (3 - 10 mm) bands of pyritic sulphide concentrated in F ₁ and F ₂ layers. Sulphide varies from massive pyritic (75% pyrite), lesser sphalerite, galena, and locally bante; to pyritic (10%) phyllite with lesser chalcopyrite, sphalerite, galena. Chalcopyrite in tension gashes. Grade 2 - 15 lead-zinc. Core angles: 900' = 45°; 920' = F ₂ fold; F ₂ 75°, F ₁ subvertical 940' = 46°; 960' = 68°	2.4/ 2.4	719	898	900.4	2.4	1.18	1.56	.38		2.74				
			3.2/ 3.2	720	900.4	903.6	3.2	8.55	5.16	2.79		13.71	27.36	16.51	8.93	
			2.5/ 2.5	721	903.6	906.1	2.5	4.95	.59	1.62		5.54	12.38	1.48	4.05	
			6.7/ 6.7	722	906.1	912.8	6.7	1.58	.60	.50		2.18	10.59	4.02	3.35	
			3.4/ 3.4	723	912.8	916.2	3.4	4.50	7.40	1.82		11.93	15.3	25.16	6.19	
			4.8/ 4.8	<u>Wt. Av.</u> 724	900.4 916.2	916.2 921	15.8 4.8	4.15 .14	2.98 .18	1.43 .21		(49.0)	65.63 .32	47.17 Pb2n	22.52	
		897-901 <i>PS 15 Py, 4% , 7 PZ.</i> -903 <i>M+Pb, 50 Py, 13 PZ</i> -906 <i>M, 60 Py, 4.5 PZ</i> -912 <i>M, 20 Py, 1-2 PZ</i> -916 <i>M, 55 Py, 20 PZ</i> -927 <i>Pb (ribbon), 40 Py, 1-2 PZ</i>	6.0/ 6.0	725	921	927	6.0	.14	.16	.18		.30	.30	Pb2n		
		-916 <i>M, 55 Py, 20 PZ</i> -927 <i>Pb (ribbon), 40 Py, 1-2 PZ</i>	5.4/ 5.4	726	927	932.4	5.4	7.65	9.75	3.09		9.31 10.6	17.40	41.31	52.65	16.69
		-932.5 <i>M, 60 Py, 20 PZ</i> -950 <i>Pb, 35 Py, 1 PZ</i>	10/10	727	(932.4-937.0)	(4.6)		.43	.42	.29		.85	1.978	1.982	1.334	
		-957 <i>M, 90 Py, 0.2 PZ</i> -961.6 <i>Pg+M, 40 Py, 2-3 PZ</i>	6.5/ 6.5	— 728	942.4 945	945	— 6.5	WK mineralized phyllite	<0.5	pyrite zinc		1.98				
		-972 <i>Ps, 17 Py, 25 Pb, 7-8 PZ</i> -979 <i>Ps, 4 Py, 15 Pb, 4-5 PZ</i>	6.0/ 6.0	729	951.5	957.5	6.0	.80	1.20	.44		2.00				

Wt. Av. 916.2/927.0/10.8 | .31 Pb2n | .62 Pb2n

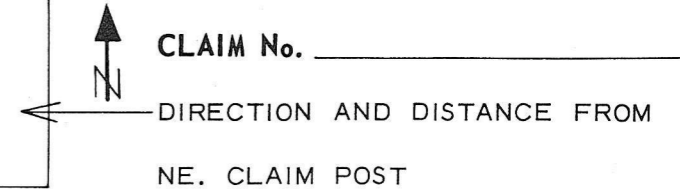
DIAMOND DRILL RECORD

LOGGED BY _____

PROPERTY _____
 LATITUDE _____ BEARING OF HOLE _____ STARTED _____
 DEPARTURE _____ DIP OF HOLE _____ COMPLETED _____
 ELEVATION _____ DIP TESTS _____ DEPTH Proposed: _____ Ultimate: _____

D.D.H. No. A - 39 PAGE 2 of 4

CLAIM No. _____



FOOTAGE		DESCRIPTION	Rec. Ft.	Sample No.	Footage		Sample Length	Assay					Assay x Feet				
FROM	TO				From	To		Pb	Zn	Ag	Au	Cu	Pb	Zn	Ag		
		Absurdant thin (2 - 6") quartz veins with green chlorite blebs.	99%														
		Stringers and blebs of pyrite and pyrrhotite. Good F ₂ ; Local small scale F ₂ folds															
		Core angle: 200' = 55°; 220' = 80°; F ₁ - subvertical; 24 240' = 72°; 260' = 76°; 280' = 85° 300' = 56°; 320' = 68°.															
		Note minor green chlorite-sericite phyllite 289.7 - 295	5.3/ 5.3	743	289.7	295	5.3	1.00	.69	.50							
		Note minor fine grained spalerite at 308.8'		—	295.0 322.0	322.0 323.5	—	0.516	0.210	308.8 - 311'							
98.1 322	102.4 336.1	SULPHIDE ZONE in pale sericite-chlorite phyllite; Bands of massive pyrrhotite rich sulphide, in locally brecciated sericite phyllite. Note thin band dark-grey graphitic phyllite 326-28'	2.5/ 2.5	744	323.5	326	2.5	1.40	1.10	.59							
		Sulphides: 40% pyrrhotite, 15% pyrite, 1-2% magnetite. Minor chalcopyrite, red sphalerite and galena.	2.8/ 2.8	745	326	328.8	2.8	.23	.23	.15							
		GREY STRIPED CHLORITE-SERICITE PHYLLITE: Note thin quartz veins stringers. Core angle: 340' = 69°	7.3/ 7.3	746	328.8	336.1	7.3	1.15	.88	.50							
336.1	105.0 344.5	GREY STRIPED CHLORITE-SERICITE PHYLLITE: Note thin quartz veins stringers. Core angle: 340' = 69°		—	323.5 336.1	336.1 344.5	12.6	1.06	Pb2r								
344.5	116.6 382.7	SULPHIDE ZONE: - Banded pyrite, sphalerite rich sulphide in quartz-sericite phyllite (344.5 - 354) - Banded, and massive sulphide in striped quartz-feldspar grey phyllite matrix 354 - 377' - Banded and massive sulphide - in local white sericite phyllite matrix 377 - 382.7'. Note tension gashes in sericite phyllite	7.3/ 7.3	747	344.5	351.8	7.3	.93	1.44	.44							
		GRADE VARIES 2 - 8 lead-zinc: Average 4 - 5% Core angles: 360' = 75°; 380' = 76°	4.4/ 4.4	748	351.8	356.2	4.4	2.35	2.40	.59	4.75	Pb2r					
			5.1/ 5.1	749	356.2	361.3	5.1	.14	.23	.35							
			9.7/ 9.7	750	361.3	371	9.7	2.93	2.22	1.03			28.42	21.53	9.99		
			5.7/ 5.7	751	371	376.7	5.7	1.65	1.16	.74	2.81		9.40	6.61	4.22		
			6/6	752	376.7	382.7	6.0	2.38	2.76	.94	5.10		14.28	16.56	5.64		
					361.3	382.7	21.4	2.43	2.09	.93	(31.9%)		52.10	44.7	19.84		

DIAMOND DRILL RECORD

LOGGED BY Stanley B. Reamsbotten

PROPERTY Vangorda Mines - AEX Option

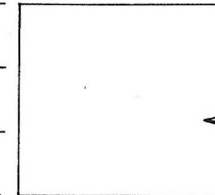
D.D.H. No. A - 40

PAGE 1 of 3

LATITUDE 4 +00 S BEARING OF HOLE _____ STARTED Sept. 20/74

DEPARTURE L. 20 + 00W DIP OF HOLE Vertical COMPLETED Sept. 24/74

ELEVATION 3886.05 A.S.L. DIP TESTS _____ DEPTH Ultimate: 578'
412.9 P.A.T. Proposed: 176.17 M



CLAIM No. CHAMP 4

DIRECTION AND DISTANCE FROM

NE. CLAIM POST

FOOTAGE		DESCRIPTION	Rec. Ft.	Sample No.	Footage		Sample Length	Assay					Assay x Feet					
FROM	TO				From	To		Pb	Zn	Ag	Au	Cu	Pb	Zn	Ag			
0	42.5	OVERBURDEN																
42.5	100	DARK GREY-BLACK GRAPHITIC PHYLLITE. Fine grained, micaceous. Thin quartz-feldspar laminae (1 mm) alternating with mica laminae. Local chlorite-sericite zones. Rock broken throughout section. Blebs of pyrite. Core angles: 45' = 75°; 60' = 55°; 80' = 56°; 100' = 72°	42.5/57.5	--	42.5	100	--											
100	144	MEDIUM DARK GREY STRIPED QUARTZ-SERICITE-GRAPHITE PHYLLITE. Moderately graphitic. Quite striped, quartz-feldspar laminae (3 - 4 mm) altering with micaceous laminae. Minor pyrite. Core angles 120' = 76°; 140' = 82°	95%															
144	174	DARK-GREY-BLACK STRIPED QUARTZ GRAPHITE PHYLLITE. Augen like lenses of quartz-feldspar boundined. Minor pyrite blebs. Core angles: 160' = 76°; 170' = 79°	28/30	--	144	174	--											
174	194	MEDIUM GREY STRIPED QUARTZ-SERICITE-CHLORITE-GRAPHITE PHYLLITE. Well defined F ₂ ; F ₁ subvertical. Black graphitic lenses altering with quartz and less graphite mica layers. Small scale F ₂ fold. Core angles: 180' = 65°; 190 = 75°	17/20	--	174	194	--											
194	254.9	SULPHIDE ZONE IN PALE-WHITE-GREENISH QUARTZ-SERICITE-CHORITE PHYLLITE. Mainly bands of pyrrhotite (0.5 - 6") in sericite phyllite which has abundant tension gashes in filled with pyrrhotite. Sulphide: 10% pyrrhotite, 2% pyrite, minor chalcopyrite, fine grained galena, and minor reddish spalerite (2 - 3% lead-zinc?). Note good-small-scale F ₂ folds in phyllite. Note thin (2") veins of pyrrhotite, transgress foliation: others within F ₁ ; 2 generations of mineral F ₂ folds. Core angles: 200' = 77°; 220' = 70°; 240' = 80°; 260' = 64°;	10.5/10.5	--	194	199	10.5	.43	.58	.15								
			6/6	210	209.5	215.5	6.0	.04	.20	.06								
			6/6	211	235.5	241.5	6.0	.10	.36	.03								
			6.5/6.5	212	241.5	248	6.5	.28	.80	.09								
			5/5	213	248	253	5.0	.08	.67	.12								

Wk min. 1 - 2% pyrrhotite

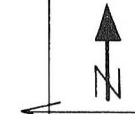
DIAMOND DRILL RECORD

LOGGED BY _____

PROPERTY _____
 LATITUDE _____ BEARING OF HOLE _____ STARTED _____
 DEPARTURE _____ DIP OF HOLE _____ COMPLETED _____
 ELEVATION _____ DIP TESTS _____ DEPTH Proposed: _____ Ultimate: _____

D.D.H. No. A - 41 PAGE 3 of 6

CLAIM No. _____



DIRECTION AND DISTANCE FROM
 NE. CLAIM POST

FOOTAGE		DESCRIPTION	Rec. Ft.	Sample No.	Footage		Sample Length	Assay					Assay x Feet			
FROM	TO				From	To		Pb	Zn	Ag	Au	Cu	Pb	Zn	Ag	
548.5	182.9 600	GREY STRIPED QUARTZ-FELDSPAR-SERICITE PHYLLITE. Thin quartz-feldspar laminae altering with grey micaceous laminae. Good F ₂ folds and foliation. "Clasts" at 560 - 68', and 582 - 89', in slightly more graphitic zones. Minor pyrite, pyrrhotite. Core angles: 560' = 80°; 580' = 85°; 600' = 70°	0.4/ 3.6	--	555	558.6	--									
			1.5/ 4	--	558.6 568	568.0 572	--									
600	190.2 624	BLACK GRAPHITIC PHYLLITE. Not as striped as above unit, though thin quartz-feldspar laminae define F ₂ folds. Excellent F ₂ foliation. Core angle: 620' = 88°.														
624	217.9 715	DARK GREY BLACK MODERATELY GRAPHITIC PHYLLITE. Less striped, with some zones that are not graphitic. Thin quartz-feldspar laminae (1 mm) define F ₂ small-scale folds. Excellent F ₂ foliation. Local pyrite cubes and blebs of pyrrhotite. Bank massive pyrrhotite, with minor chalcopyrite at 704 - 704.8'. Note "clast" 640'. Core angles: 640' = 71°; 660' = 72°; 680' = 76°; 700' = 80°														
715	239.9 787	SULPHIDE ZONE: Banded and massive pyrite, pyrrhotite rich sulphide in sericite phyllite (locally brecciated) and striped ribbon quartz feldspar graphitic phyllite. Detail: 715 - 743 Banded massive sulphide and mineralized, locally brecciated - white sericite-phyllite (brecciated at 715). Various sections are pyrrhotite rich, or pyrite rich (40 - 60% pyrrhotite and pyrite). Red shalerite, galena, lesser blebs and gashes of chalcopyrite. In sphalerite, galena rich zones also get white bante. Minor streaks of magnetite. Grade varies 2 - 15 lead-zinc: F ₂ fold nose 729, 2' W.L. 743 - 761.6 Mineralized quartz-feldspar ribbon graphitic phyllite. 25% pyrite concentrated in F ₁ layers mainly. Last 2' of section rich sphalerite, galena, barite. F ₂ fold nose 752'. 1.5 W.L.	4.7/ 4.7	755	715	719.7	4.7	1.60	2.28	.80						
			7.3/ 7.3	756	719.7	727	7.3	.13	.11	.24						
			3.5/ 3.5	757	727	730.5	3.5	2.45	1.50	1.50						
			3.5/ 3.5	758	730.5	734	3.5	6.45	7.07	3.38			22.58	24.75	11.83	
			6.0/ 6.0	759	734	741	7.0	9.00	8.53	3.53			63.00	59.71	24.71	
			8.0/ 8.0	760	741	749	8.0	.38	.27	.35			85.59	84.46	36.54	
			5.0/ 5.0	761	749	754	5.0	1.50	.49	.77						
			5.0/ 5.0	762	754	759	5.0	.15	.17	.06			.75	.85	.3	
					751.6	754.9	2.4						3.6	1.176	1.84	

DIAMOND DRILL RECORD

LOGGED BY _____

D.D.H. No. A - 41

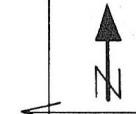
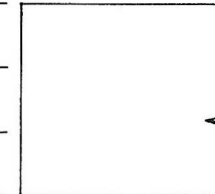
PAGE 4 of 6

PROPERTY _____

LATITUDE _____ BEARING OF HOLE _____ STARTED _____

DEPARTURE _____ DIP OF HOLE _____ COMPLETED _____

ELEVATION _____ DIP TESTS _____ DEPTH Proposed: _____ Ultimate: _____

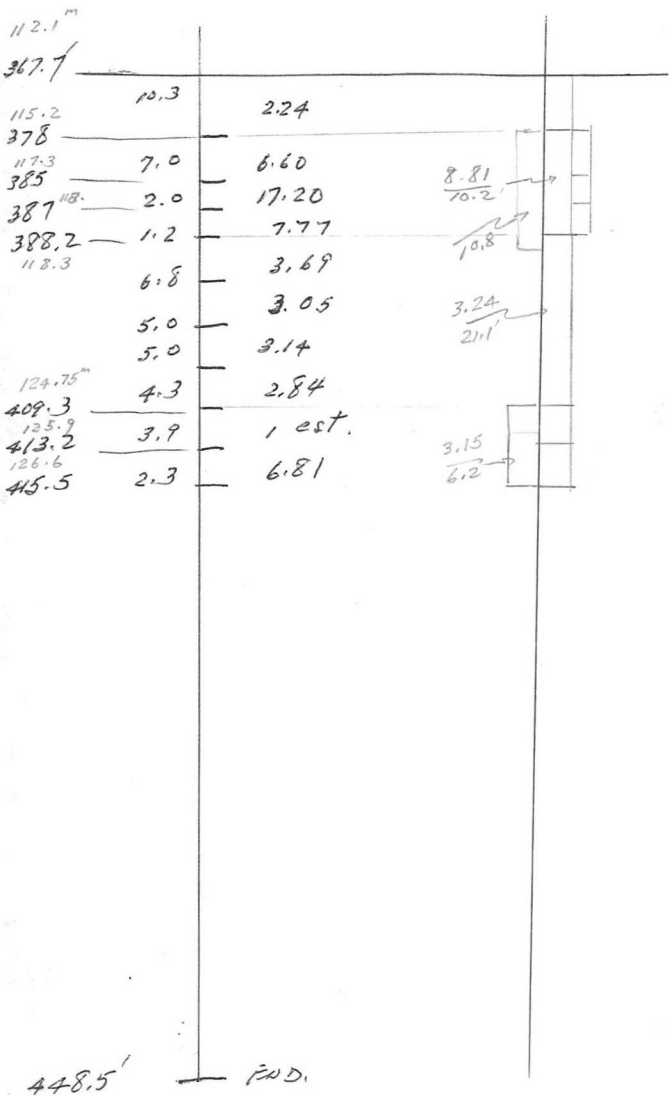


CLAIM No. _____

DIRECTION AND DISTANCE FROM

NE. CLAIM POST

FOOTAGE		DESCRIPTION	Rec. Ft.	Sample No.	Footage		Sample Length	Assay					Assay x Feet		
FROM	TO				From	To		Pb	Zn	Ag	Au	Cu	Pb	Zn	Ag
		<i>25% Ps, 2-5 Py, 0.07 Cu (Ps)</i> 761.6 - 787 Pyrrhotite rich banded sulphide. Mainly in brecciated white quartz-sericite phyllite. Phyllite has small-scale F ₂ folds; "tensional features" - boudined fragments etc. 1 - 3 lead-zinc. Core angles: 720' = 62°; 740' = 70°; 760' = 65°; 780' = 76°.	2.6/	<i>WT. AV.</i>	751.1	761.6	10.5	2.00	1.99			15.99	18.72	6.89	
			2.6	763	759	761.6	2.6	6.15	7.20	2.65					
			5.0/	<i>WT. AV.</i>	751.6	761.6	10.0	2.03	2.07	.90 (30.9)		20.34	20.74	9.03	
			5.0	764	761.6	766.6	5.0	.63	.28	.29		4.55	PbZn		
			6.4/												
			6.4	765	766.6	773	6.4	.50	.34	.29		5.38	"		
			--	--	773	774.4	--					0.0	"	(Pb)	
			8.5/												
			9.1	766	744.4	783.5	9.1	1.15	.80	.44		17.75	"		
			3.5/												
			3.5	767	783.5	787	3.5	.33	.24	.21		2.	"		
787	256.2	DARK GREY-BLACK QUARTZ - GRAPHITIC PHYLLITE, Micaceous; more quartz-feldspar laminae from 830' on. Graphite variable. Some pale green chlorite. Pyrrhotite, pyrite, chalcopyrite in white sericite phyllite at 791-798 (30% sulphide). Also pyrrhotite in F ₁ layers at 823'. <i>(Ps)</i>	7.0/		787.0	791.0									
	840.7			7.0	768	791	798	7.0	.58	.36	.24		6.58	"	(Pb)
				<i>WT. AV.</i>		761.1	798.0	36.9	0.98	PbZn			36.26	"	(Pb)
			4.27		798.0	840.7									
			3.7/												
840.7	266.7	SULPHIDE ZONE IN STRIPED QUARTZ-FELDSPAR-GRAPHITIC PHYLLITE. Mainly banded massive pyrite sulphide, or mineralized pyritic quartz-graphite phyllite. Note zone pyrrhotite sulphide in this band of brecciated sericite phyllite 840.7 - 844' (<i>25% Pb, Py</i>) (<i>Ps</i>)	3.7	769	840.7	844.4	3.7	.35	.20	.32		2.04	PbZn		
	875.0			2.4/											
				2.4	770	844.4	846.8	2.4	.01	.01	.03		0.05	"	
			3.8/	<i>WT. AV.</i>	840.7	846.8	6.1	0.3	PbZn			2.09	"	(Pb)	
		<i>Ps</i> 846.8 - 851.5 Banded pyrite, pyrrhotite, chalcopyrite, magnetite: 30% sulphide in sericite phyllite 3 lead-zinc.	3.8	771	846.8	850.6	3.8	.35	.26	.29		1.33	1.055	1.177	
		<i>P_M</i> 851.5 - 855.6 Massive pyrite, barite, sphalerite, galena, sulphide 60% sulphide, 10 - 12% lead-zinc.	5/5	772	850.6	855.6	5.0	5.48	6.48	2.12	855-856.8/1.2	27.4	32.4	10.6	
			5/5	773	855.6	860.6	5.0	.18	.23	.18		2.216	.276	.216	
		<i>P_M</i> 855.6 - 865.5 Banded pyrite sulphide in striped ribbon quartz phyllite, 20% pyrite, 2% lead-zinc	4.9/	<i>WT. AV.</i>	846.8	856.8	10.0	2.78	3.37	1.2 (41.1)		28.946	33.731	1.993	
			4.9	774	860.6	865.5	4.9	.35	.44	.29					
		<i>M</i> 865.5 - 873.2 Banded massive pyrite sulphide, 60% pyrite, 10% barite 8% lead-zinc. Red sphalerite. Blebs black magnetite	7.7/									1.56	PbZn	(Pb)	
			7.7	775	865.5	873.2	7.7	2.20	1.80	1.03					
			1.8/												
			1.8	776	873.2	875.0	1.8	.28	.31	.21				(Pb)	
				<i>WT. AV.</i>	846.8	857.3	10.5	2.66	3.22	1.15 (39.5%)					



FND.

DIAMOND DRILL RECORD

LOGGED BY Stanley B. Reamsbotten

PROPERTY Vangorda Mines Option - AEX Minerals Corporation

D.D.H. No. A - 44

PAGE 1 of 2

LATITUDE 12 + 00 N BEARING OF HOLE _____ STARTED Oct. 1/74

(11 + 45.6)

DEPARTURE L 12 +00 W DIP OF HOLE Vertical COMPLETED Oct. 3/74

ELEVATION 3992 A.S.L. DIP TESTS _____ DEPTH Proposed: Ultimate: 346 (105.46m)

519 P.A. Topog.



CLAIM No. ELLEMAY 3

DIRECTION AND DISTANCE FROM

NE. CLAIM POST

FOOTAGE		DESCRIPTION	Rec. Ft.	Sample No.	Footage		Sample Length	Assay					Assay x Feet				
FROM	TO				From	To		Pb	Zn	Ag	Au	Cu	Pb	Zn	Ag		
0	35	OVERBURDEN - Granitic boulders															
35	120	BLACK QUARTZ GRAPHITIC PHYLLITE. Thin white quartz-feldspar laminae (1 mm) define F ₂ folds. Good F ₂ foliation. F ₁ subvertical. Rocks rusty to 99'; limonite after pyrite. Note fine grained sphalerite-pyrite in stringers in foliation at 88'. Core angles: 40' = 40°; 60' = 65°; 80' = 70°; 100' = 76°; 120' = 70°	2/11	--	35	46	--										
			5/10	--	72	82	--										
				--	82	120	--										
120	153.5	SULPHIDE ZONE IN WHITE QUARTZ-SERICITE PHYLLITE. Thin bands of pyrrhotite, with minor sphalerite, chalcopyrite. 5 - 8% pyrrhotite, Grade 1 - 3 lead-zinc. Note sericite phyllite has abundant tension gashes which are infilled with pyrrhotite, chalcopyrite. Core angles: 140' = 75°; 160' = 68°; F ₂ folds	10/10	217	120	130	10	.28	.49	.15							
			10/10	218	130	140	10	.09	.20	.09							
			10/10	219	140	150	10	.13	.26	.09							
153.5	174	DARK GREY BLACK, STRIPED MINERALIZED QUARTZ GRAPHITE PHYLLITE. Pyrite, pyrrhotite bands in F ₁ . Minor chalcopyrite, sphalerite, 3 - 5% sulphide. Lesser amount of tension gashes with chalcopyrite etc. Core angle: 170' = 75°.	10/10	220	150	160	10	.25	.22	.12							
			7/7	221	160	167	7	.15	.17	.06							
			7/7	222	167	174	7	.10	.33	.09							
174	220	DARK GREY STRIPED QUARTZ-SERICITE-CHLORITE PHYLLITE. Thin (1 mm) white quartz-feldspar laminae altering with dark grey micaceous laminae. Green chlorite stringers. Minor pyrite. Core angles: 180' = 80°; 200' = 66°; 220 - 75°		--	174	220	--										
220	267	PALE GREY-GREEN QUARTZOSE, SERICITE-CHLORITE PHYLLITE which is mineralized between 230 - 267'. Rock very quartzose, has peculiar dark bottle green chlorite in discrete F ₁ layers. Good F ₂ folds. Mineralized: Bands, layers of pyrrhotite, in F ₁ , with minor blebs of chalcopyrite, and fine grained galena, sphalerite. Note quartz vein with arseno pyrite at 236; 5% pyrrhotite: 1 lead-zinc. Core angles: 240' = 80°; 260' = 67°.	10/10	--	220	245	--										
			5/5	224	255	260	5	.17	.16	.03							
			6.5/6.5	225	260	266.5	6.5	.33	.16	.15							

DIAMOND DRILL RECORD

LOGGED BY Werner Gruenwald

checked Dec 11/76 JB

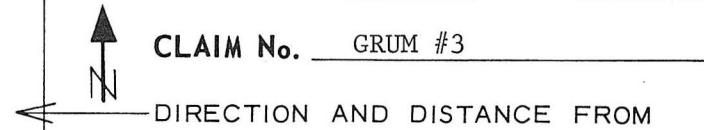
PROPERTY Kerr Addison Mines Ltd. - AEX Joint Venture

D.D.H. No. A - 45 PAGE 1 of 9

LATITUDE 4 + 00 N 10658.86 N BEARING OF HOLE _____ STARTED Oct. 3/74

CLAIM No. GRUM #3

DEPARTURE 68 + 00 W 7738.69 E DIP OF HOLE - 90° COMPLETED Oct. 15/74



ELEVATION 4196' Topo. DIP TESTS _____ DEPTH Ultimate: 772'

Proposed:

(235.31m)

NE. CLAIM POST

FOOTAGE		DESCRIPTION	Rec. Ft.	Sample No.	Footage		Sample Length	Assay					Assay x Feet				
FROM	TO				From	To		Pb	Zn	Ag	Au	Cu	Pb	Zn	Ag		
0	146	OVERBURDEN															
146	206	SULPHIDE ZONE. Sphalerite-pyrite-galena in a quartz rich sericite phyllite brecciated in places (146 - 174'). Quartz sulphide section from 184.5 - 206'. Consists of massive pyrite to sphalerite and galena (pyrrhotite low). 20 - 75% sulphides; 3 - 8% combined lead-zinc.	2.1/2 2.1 11/7 3 5/ 4	794 795 796	146 167 170 174	167 170 174 174	21 3 4	5.93 .73 2.33	7.44 3.18 5.28	2.35 .29 .83				124.53 2.19 9.32	156.24 9.54 21.12	49.35 .87 3.32	
		146 - 167' - Quartz-sulphides. 4 - 8% lead-zinc.	2.5/ 9.5	Wt. Av 797	167.0 174	174.0 183.5	7.0 9.5	1.64 2.33	4.38 7.20	0.6 .91	Wt. Av.			11.51 22.14	30.66 68.40	4.19 8.65	
		170 - 174' - Quartz-sericite-sulphides - pebbles only 2-4% lead-zinc.	5.5/ 6.5	798	183.5	190	6.5	3.90	5.22	1.44				25.35	33.93	9.36	
		174 - 183.5' - Quartz sericite sulphides ≤ 4% lead-zinc	2.5/ 10		174.0 190	190.0 200	16.0 10	2.97 4.43	6.4 12.1	1.13 1.76	Wt. Av.			47.44 44.3	102.33 121.0	18.01 17.60	
		190 - 200' - Massive sulphides 70 - 90% 10% lead-zinc.															
		200 - 206' - Quartz-sericite sulphides 4% lead-zinc (poor recovery)	1/6 3.0/ 5.5	800	200	206	6	4.50	5.40	1.59				27.00	32.4	9.54	
206	210.5	PALE GREEN QUARTZ-SERICITE PHYLITE. Core angle: 45°. Some grey sericite phyllite and minor specks of mariposite.	3.0/ 5.5 4.5	Wt. Av Wt. Av	190.0 146.0	206.0 206.0	16.0 60.0	4.45 4.25	9.59 7.38	1.69 1.64 (56.4)	Wt. Av			71.30 259.78	153.4 442.63	27.14 98.69	
					206.0	210.5	-										
210.5	218	MASSIVE SULPHIDE ZONE. 50% sulphides in a matrix of quartz-sericite. Core angle: 30° - 40° - laminae contorted. 210.5 - 218 - 10 - 15% lead-zinc (pyrrhotite content low ≤ 1%)	4.9/ 7.5	801	210.5	218	7.5	6.00	9.6	2.35							
218	220.5	QUARTZ RICH ZONE IN MINOR LEAD-ZINC. Vestiges of sericite phyllite some buff colored material in fractures and sulphides. Avg. 15 - 20% sulphides - 4 - 6% lead-zinc.	2.0/ 2.5	802	218	220.5	2.5	2.30	4.42	.56							
					210.5	220.5	10.0	5.07	8.30	1.90				50.70	83.00	19.00	
220.5	232	MASSIVE WHITE QUARTZ - minor sericite phyllite and pyrite.	3.5/ 11.5	Wt. Av Wt. Av	146.0	220.5	74.5	4.10	7.06	1.58 (54.9% pt)				305.48	525.63	117.69	

DIAMOND DRILL RECORD

LOGGED BY _____

PROPERTY _____
 LATITUDE _____ BEARING OF HOLE _____ STARTED _____
 DEPARTURE _____ DIP OF HOLE _____ COMPLETED _____
 ELEVATION _____ DIP TESTS _____ DEPTH Ultimate: _____

D.D.H. No. A - 45 PAGE 2 of 9

CLAIM No. _____



DIRECTION AND DISTANCE FROM

NE. CLAIM POST

FOOTAGE		DESCRIPTION	Rec. Ft.	Sample No.	Footage		Sample Length	Assay					Assay x Feet				
FROM	TO				From	To		Pb	Zn	Ag	Au	Cu	Pb	Zn	Ag		
232	240	BUFF TO PALE GREEN QUARTZ SERICITE + CHLORITE PHYLLITE. Variably laminated phyllite consisting of sericite and quartz. Foliation surfaces are of a lustrous sheen. Section is virtually sulphide free. Core angles: Contorted at 232-233; 237' = 45°; 238' = 50°	90%	-	220.5	240.0	-										
240	250	DARK GREY QUARTZ-SERICITE (SULPHIDE) PHYLLITE. Coarse band phyllite with sulphide content from 10 - 15%. Lead-zinc low - 1 - 2%. 241.5 - 242' - Mariposite rich section having pale green - buff sericite phyllite above and below. Core angles: 241' = 45°; 245' = 45°; 249' = 58°. 240 - 250' - Sulphides 10 - 20% in quartz-sericite phyllite, most sulphides associated in quartz bands in phyllite. 246 - 250' - Graphitic phyllite in same amount of sulphides and up to 25%.	8.5/10	803	240	250	10	.42	.98	.29							
250	277	MASSIVE SULPHIDE ZONE. Up to 90% sulphides in places - quartz sericite material in places of few sulphides. 8 - 15% lead-zinc. Many sections show a porous sulphide structure. 257 - 260' - shows high percentage of zinc. Phyrrhotite-magnetite virtually non-existent in this sulphide section.	5/5 100% 6/6 10/10 2/2	804 805 806 807 808	250 255 260 266 275	255 260 266 275 277	5 5 6 9 2	6.90 8.25 8.63 8.74 7.50	14.2 16.2 16.8 17.0 15.6	3.03 2.94 3.53 3.82 2.94							
					250	277	27	8.19	16.19	3.38	WT. AV.						
277	284	QUARTZ-SERICITE GRAPHITE PHYLLITE. Dark grey variably laminated - sometimes contorted sericite-graphite phyllite. Sulphides 10 - 20% (pyrite 15%) Lead-zinc 2 - 4%. 280 - 282 - Ground up due to higher garphite content. 281.8' - brecciated sulphides in contorted quartz-sericite phyllite Core angles: 278' = 65°; 281.5' = 70°	7/7 85%	809	277	284	7	1.25	2.00	.29					8.75	14.00	2.03

DIAMOND DRILL RECORD

LOGGED BY _____

PROPERTY _____
 LATITUDE _____ BEARING OF HOLE _____ STARTED _____
 DEPARTURE _____ DIP OF HOLE _____ COMPLETED _____
 ELEVATION _____ DIP TESTS _____ DEPTH Proposed: _____ Ultimate: _____

D.D.H. No. A - 45 PAGE 5 of 9

CLAIM No. _____



DIRECTION AND DISTANCE FROM

NE. CLAIM POST

FOOTAGE		DESCRIPTION	Rec. Ft.	Sample No.	Footage		Sample Length	Assay					Assay x Feet				
FROM	TO				From	To		Pb	Zn	Ag	Au	Cu	Pb	Zn	Ag		
		sericite phyllite in specks of mariposite Core angle: 50 - 55°.															
470	522.3	MEDIUM GREY THINLY LAMINATED QUARTZ-SERICITE (+ CHLORITE) PHYLLITE Variably laminated and contorted phyllite. - Quartz chlorite veins at 485'; 487.5'; 498.3'. Most of section is quite fissile. (Well developed F ₂). Core angles: 477' = 80°; 481' = 70°; 489.5' = 87°; 503' = 45° 516' = 80°.	90%														
		Sulphides low 1 - 2%, not evenly distributed, most in a section of very finely laminated sericite phyllite - concentrated in thin quartz seams. Kink folds at 519.5'.															
522.3	534.2	PALE GREEN STREAKY QUARTZ-SERICITE PHYLLITE. Quite variable in color and composition. 522.3 - 525.0' - Pale green pure sericite (talcose) phyllite 525.5 - 527.0' - Dark grey quartz-sericite phyllite - 10 - 15% pyrite 527.0 - 528.7' - Pale grey sericite phyllite, variably laminated in quartz bands of variable thicknesses. 528.7 - 529.7' - As above except with mariposite bands. 529.7 - 533.0' - Pale green (talcose) quartz-sericite phyllite 533.0 - 534.2' - Quartz chlorite vein. Last 1" of quartz-chlorite vein has the pale green phyllite in contact before changing to a dark gray phyllite.															
534.2	545	DARK GREY FISSILE SERICITE PHYLLITE. Variably laminated fissile phyllite in leaf pyrite along F ₂ foliation surfaces. Sulphides ≈ 1 - 2%. Core angles: 539' = 90°; 535' = 80°	2.5/ 10.0														
545	566	SULPHIDE ZONE. 545.0 - 550.5' - Top shows folding of F ₂ and minor brecciation - poor recovery, 20% sulphide 4% lead-zinc	1.0/ 5.5	811	545	550.5	5.5	.08	1.12	.15							

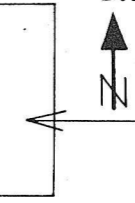
DIAMOND DRILL RECORD

LOGGED BY _____

PROPERTY _____
 LATITUDE _____ BEARING OF HOLE _____ STARTED _____
 DEPARTURE _____ DIP OF HOLE _____ COMPLETED _____
 ELEVATION _____ DIP TESTS _____ DEPTH Proposed: _____ Ultimate: _____

D.D.H. No. A - 45 PAGE 7 of 9

CLAIM No. _____
 DIRECTION AND DISTANCE FROM
 NE. CLAIM POST



FOOTAGE		DESCRIPTION	Rec. Ft.	Sample No.	Footage		Sample Length	Assay					Assay x Feet				
FROM	TO				From	To		Pb	Zn	Ag	Au	Cu	Pb	Zn	Ag		
624	647	SULPHIDE ZONE IN GREY QUARTZ SERICITE PHYLLITE. Sulphide content varies from 10% at 641.5' to 75% at 646'. 624.0 - 636.0' - Ground up sulphide section in dark grey sericite phyllite.	.5/ 12	816	624	636	12	1.88	3.84	1.00							
		636.0 - 640.0' - Massive sulphide zone - barite present 40 - 70% pyrite, 8 - 10% lead-zinc.	3.5/ 4.0	817	(634.5 636	636 640	(1.5 4	6.23	8.82	2.79				(2.82 24.92	5.76 35.28	1.50 11.16	
		640.0 - 645.0' - Sulphides 10 - 15% pyrite in dark grey sericite phyllite 2 - 3% lead-zinc. (poor recovery due to crumbly nature of core).	1/5 1.5/ 2.0	818 819	640	645 647	5 2	1.80 4.95	4.80 8.28	1.12 2.85				9.00 9.90	24.00 16.56	5.60 5.70	
		Massive sulphides from 645 - 647' - quartz gangue. 50 - 70% sulphides - 6 - 8% lead-zinc (up to 10%)		WT. AV. WT. AV.	636	647	12.5 (3.8) 11.0	3.73 3.98	6.53 6.89	1.92 2.04	(85.8) WA			46.64 43.82	81.60 75.84	23.96 22.46	
647	652.6	PALE GREEN QUARTZ-SERICITE PHYLLITE. Crumbly in nature - soft talcose. Core angle: 45° - 60°. Contact with sulphides 30°.	50%	-	647	652.6	-										
652.6	699.5	MASSIVE SULPHIDE ZONE. Quartz gangue, some phyllite. Porous pyrite fairly widespread, Grades variable. Magnetite at 655'. #819 - Massive sulphide 60 - 80% - Lead-zinc 10%	7.2/ 7.4	820	652.6	660	7.4	1.98	1.98	.88			3.96	✓			
		#820 - Massive sulphide 60 - 80% - Lead-zinc 10 - 15%	4.7/ 5.0	821	(657.5 660	660 665	(2.5 5.0	1.04	.63	.44			1.67	(4.95 5.20	4.95 3.15	2.20 2.20	
		#821 - Massive sulphide 60 - 80% - Lead-zinc 10 - 15%	4.7/ 5.0	822	665	670	5.0	6.53	3.66	1.76			10.29	✓ 32.65	18.30	8.80	
		#822 - Massive sulphides ≈ 70% - brecciated at 667.5' to 669.5' 15 - 20% lead-zinc.	10/ 10	823	670	680	10	.97	.46	.44			1.43	1.17			
		#823 - Massive sulphides ≈ 50% (up to 70% in places). Whole section shows brecciation of sulphide. Matrix is also sulphides indicating a late stage of deformation. 10 - 15% lead-zinc. (minor pyrrhotite).	5/5	824	680	685	5	.27	.37	.26			0.64				
		#824 - Massive sulphide zone - brecciated 40 - 60% sulphides, 10 - 15% lead-zinc. (Quartz gangue).	5/5	825	685	690	5	.94	1.30	.44			2.24	2.67			
		#825 - Brecciated sulphide zone - fragments up to 1" across. Quartz and sericite gangue. Sulphide 60 - 75% mainly pyrite (chalcopyrite up to 1%). Porous in places, cavity fillings of barite. 15% lead-zinc. pyrrhotite 2 - 3%	2/2	826	(687 690	690 692	(3 2	2.20	1.55	.88			3.75	(2.82 4.40	3.90 3.10	1.32 1.76	
		688.5 - 690'	5/5	827	692	697	5	2.20	3.24	.94			5.45	11.60 5.22	16.20	4.70	

