

PACIFIC  
WATERPROOF

FIELD BOOK

No. 301

018619

~~CPAIR~~

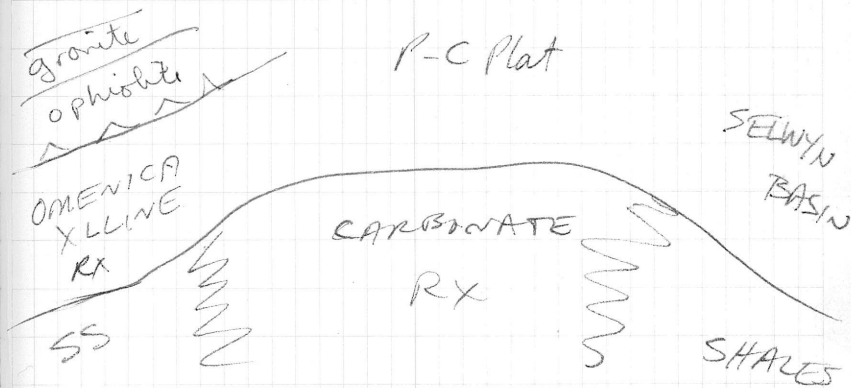
~~667-7881~~

GEOSCIENCE 1976

DEC

~16 000 000 \$ in exploration in  
Yukon

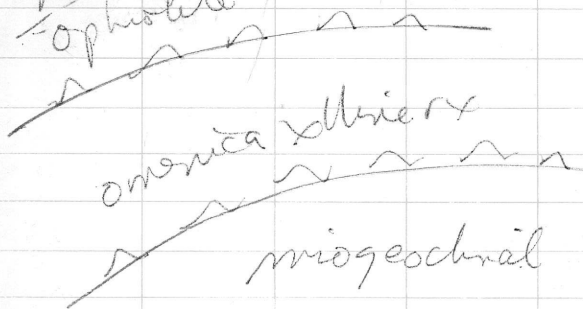
↳ DIRK  
cross section of Pelly-Cassiar  
Platform



same facies changes  
in all age rx.

America metamorphic rx and  
overlying ophiolite allochthon are  
together thrust over P-C  
Platform in Triassic →

granite  
ophiolite



---

Exploration notes

- ① Miss acid volcanics  
= Klondike schist  
Lucky Joe Creek  
Moon Lk nr XY

- ② Road River = Nasina gneiss  
Nasina gneiss has higher  
geochem than any other.

"fspr" phenocrysts in  
Dolores Lk by ore onkerite

---

Cris Lord

Mackenzie Mtns  
exploration models

TARGETS

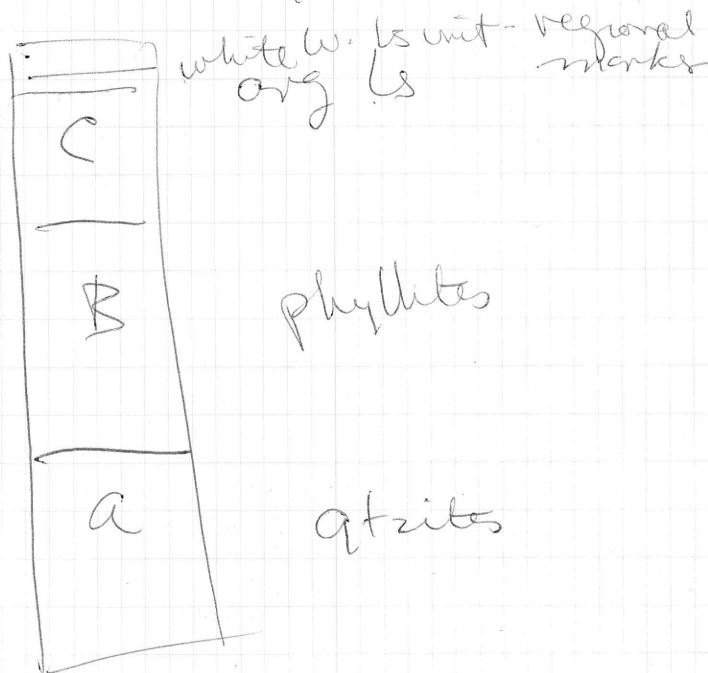
- ① TUNGSTEN
  - ② UREN
-

Tintina offset by Caltag -  
Porcupine Fault.

---

Gary Delaney

Rot straty in  
Quarlet U area





B cyclic deposition  
 of sed coarsening  
 upward  
 possibly large  
 detritic complex

C

B trans into C  
 bright orange trans zone  
 orange to buff to grey  
 ds dom sh & minor  
 ls  
 8 subdivisions

trans zone

↓  
 dm w blk ct

↓  
 intraform bx

↓  
 thick seq of thin bedded

↓  
 dolomite

↓  
 dom sh

↓  
 sharpstone cg

↓  
 Strombolenus

U, Cu →  
 Bk etc.

heterolithic polymic  
breccias.

Th-U-Zr - rare earths.

200+ ppm U in stream  
Seds. on west end of Chloë

also strong fluorine anomaly  
in above creek and Gremlin  
Creek.

- stream waters & sieves no  
good at Bond Creek or Igor

U values up to low 100's in  
Seds. in Tombstone Range

# Tert cg in Dawson & St Elias Ranges

## St Elias

- Amphitheatre Fm
- thick early Tert clastic sedos.
- derived from east
- capped by Wrangell lava
- cg to arkosic ss
- rich in carbonaceous rk
- nw of Klunene bk - probably mainly in Park
- possible source rocks not deeply weathered & also the movement of ~~the~~ the Shaktok Fault System may ~~have~~ mean that source & host rx were not juxtaposed
- coally beds sulfur poor - also a disadvantage.

southern part of Amphitheatre  
fm. - completely in park

---

### Stewart map sheet

- c.g. at base of Carmacks gp
  - again no good  
source rocks
- 

Urbig alaskites &  
relatives may be good  
source rocks - in  
this area (Snag sheet) the  
basal conglomerate is present  
in the Carmacks group as  
well.

Alaskites weather ~~well~~  
deeply.

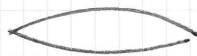
### Aishihik Lake

- source rx are present - no  
known host rx

D-T-K      R.E.

→ RE in Dom Carb next  
to high U background  
int. rock 300 my old  
- radioactive but no U.

ALLANITE



shaped xls