

018722

1  
P.R

June 23<sup>rd</sup>, 1981

Area A

- Out of Ross River

Lines

100 E and 100,5 E

Line 100 E

- Started at A100 E 00 N

which is North side of lake

30m East of Outcrop at Stream  
mouth. Went to A100 E

1140 N.

- 500m due East.

- 120m due North

- Start of Line 100,5 E

at A100,5 E 00 S

until reached lake at

A100,5 E 1320.

Went around lake!

Started A100,5 E again

on South side at A100,5 E

00 S2 due South of last point

2 P.R

Continued to A100, SE  
36052.

- 440 m due West  
hit river, couldn't cross  
followed N. bank of river  
for 60 m at  $282^\circ$ .

- Start Line A100E  
at 00N2. Continued  
until meet lake at  
A100E 240N2.

- Rock outcrop at  $340^\circ$   
from end position on  
South side of lake!

June 24<sup>th</sup>  
Area A

3 PR

Start at "Triangulation  
Station" at mountain top.  
Head West 200m to Line  
A 103 E. Go South 1.7 Km  
Samples A103E005  
to A103E1680S

- Go due west 500m

- Head due North for

1.7 Km, Samples A102,5E  
00N to A102,5E 1680N.

- End 230 meters  
due East of Small lake.

June 29<sup>th</sup>

P.R.

Area A

Lines 106E + 106,5E

Started at lake on N.  
end of L. 106,5E

went 500m west.

Down line 106E

from 005 to 18005

- West 500m East

- Line 106,5E From

00N to 1800W.

- Ended 200m short  
of Lake and 100m to  
the East!

June 26<sup>th</sup>

5

P.R

Lines 115, 5E + 116E

Start at west point of lake! Head North 1.5 km

Sampling #'s A115, 5E 00N to 115, 5E 1500N

< last sample was moose meadow at Big Timber Creek

- follow Creek East 500m.

- Start line 116E 60m South of Creek to avoid moose meadows.

- Sample from A116E 00S to A116 1260S.

- End at East tip of Starting lake!

- Sample #'s A116E 1020S, 1080S + 1140S were taken on an Esmark (spelling!)

Sample A116E 1260S was in Lake!

6.

A102,5E 360N  
- m.m.

P.R

A102,5E 200N

- Horizon "A" too Deep

A102,5E 1620N, 1680N

- m.m

A106,5E 00N  
- m.m.

7  
P.R

A106,5E 240N + 300N  
- m.m

A106,5E 1080N  
- Horizon "A" Too Deep

A106-5E 1320N  
- Horizon "A" Too Deep

X

A106E 240S  
- No Horizon "B"

A106E 360S  
- Rock Outcrop

A106E 540S  
- Volcanic Ash + Rock

A106E 1680S, 1740S + 1800S  
- Moose meadow

X

A103E 180S  
- m.m.

X

A100E 360N → 0600N  
- m.m.

A100E 720N - Horizon "A" TOO DEEP

8

P.R

A116E 1260S

- moose meadow / Lake

A116E 660S

- moose meadow

A116E 360S

- moose meadow

A115,5E 005N

- moose meadow / Lake

A115,5E 600N

- Horizon "A" Too deep

A115,5E 780N

- moose meadow

A115,5E-840N

- moose meadow / Creek

A115,5E 1260N

- moose meadow

A115,5E 1500N

- Big Timber Creek

TX

A100,5E

0052 - Marsh

A100,5E 12052 - N.S. Organic

June 27<sup>th</sup>

8

Area A

P.R

Line 119E

- Started at small  
lake in middle of  
line.

- Headed North 1090 m

- Bad sampling, ground  
was all moss in a few

No Samples for:

A119E 00N to 180N,  
360N, 420N, 540N → 720N  
840N → 1080N.

Samples Taken at

A119E 240N - 50% Volcanic  
& Organic

A119E 300N - 25% Volcanic

A119E 480N - Rock, 20%  
Volcanic

A119E 780N and 1090N

- Good Samples!

- Returned to Start and  
headed South. 00S was  
60 m South of 00N.

- Again, poor sampling, PR  
most of ground was mossy  
marsh!

Samples taken at:

A119E

005 and 605 - Very Rocky,  
30% Volcanic

4505 - Wet Sand Sample,  
25% Organic + Volcanic

[5605 - Creek]

7805 - V. Rocky Sample

8405 - 60% Organic +  
Volcanic

13205 - V. Rocky, Some  
Volcanic

13805 - Good Sample

14405 - 20% Volcanic

15005 - 40% Volcanic +  
Organic

1560 - 30% Organic

All other samples not  
taken because of poor  
terrain. Walked too  
19905.

June 29<sup>th</sup>, 1981

11

P.R

Area A

Lines 126E and  
125,5E.

Walked out from  
Camp 500m to Line  
125,5E 620m up from  
Southend! This point  
was starting point for  
line.

- Went 500m East to  
Line 126E. (00N and 00S  
are same point) Went 600m  
South from A126E 00S  
to A126E 600S. All  
samples on this section  
were Clay.

- Then went North  
from A126E 00N to  
A126E 960N.

[A126E 60N was, No  
Sample, moose meadow!]

A126E 780N was No  
Sample - Permafrost Volcanic  
Ash!

12

A126E 900N was No P.R  
Sample - Heavy Organic

A126E 960N was  
Heavy Organic/Volcanic  
50%

All other samples  
on this line were clay!

- went 500m West from  
A126E 960N to A125,5E  
00N/00S. Went 180m N  
from A125,5E 00N to  
A125,5E 180N.

- went from A125,5E  
00S/00N to A125,5E  
1620S.

A125,5E 60S was  
No Sample, moose meadows  
A125,5E 360S and  
A125,5E 420S, No Sample  
moose meadow/Creek.

A125,5E 1200S No Sample  
moose meadow

13  
A125, 5E 1080S was PR  
poor sample. 60%  
Organic/Volcanic.

A125, 5E 1320S -  
Hidden Outcrop? or  
mound of Boulders  
Sample was Heavy Volcanic  
50%

A125, 5E 1380S and 1440S  
were Good Dirt! Different  
than any other kind!

Ended at A125, 5E 1620S  
Went Home!

June 30<sup>th</sup>

14

P.R.

Started on line 121.5E  
on South side of lake  
at 005. Went to 4205.

No Samples at

A121.5E 005 - Marsh

A121.5E 1205 - Marsh

A121.5E 2405 - "

A121.5E 3005 - "

Went 1.0 km East to  
Start of Line 122.5E  
Sampled from 00N to  
1600N.

No Samples at

60N - Permafrost / Marsh

180N - Marsh

360N - Moose Meadow

780N - Volcanic Permafrost

1600N - Volcanic Permafrost

Sample Notes

Poor samples at 420N,  
900N, 960N, 1020N, 1080N

1140N, 1200N and 1320N.

All samples had about 30% Organic/Volcanic Content.

Good Samples at 120N, 240N, 1380N and 1440N

Went West 500m from A122. SE 1600N. Ran into steep Canyon at 496 m. Had to cut off top 480m of Line A122E because Canyon too steep. Good Outcrop

Went South from A122E 005 to A122E 1000S

No Samples at  
660S - moose meadow  
1080S - " "

Good Samples from 005 → 420S

16

Poor Samples at P.R  
5405 → 720 - Gravel,  
Clay + Volcanic Ash  
9005 - 25% Organic  
10205 - Clay  
13205 - Rocky

Ended at A122 E 16005

July 15<sup>t</sup>

17

P.R

Sampled North side of  
Line A 121-5E from 60N  
to 1620N

Tied into creek at  
900N.

No Samples at:

240N - moose meadow

420N - moose meadow

Samples taken: (comments)

Organics at Samples  
360N, 540N, 600N, 720N  
1080N, 1260N, 1320N.

Rocky Sample at 1020N.

Made a stop short on  
line to make it back to  
Camp for move to Anerd  
Grid.

July 2nd


18

P.R

- Sampled Line 11,000W  
(See Peter k's book) Look for  
old Grid.

July 3rd.

Walk at  $15^\circ$  2.2 km  
then 3.5 km at  $285^\circ$ .

[ Approx. location of  
Ancient Grid lines].

Sampled 2000m at  $195^\circ$ .  
Samples from 005 to  
19805 on 14,500 West.

- Went East on  $105^\circ$  500m

Sampled 2100m at  $15^\circ$ .

back to our topofil line.

Samples from 14000W  
00N to 14000W 2070N.

Tied into line at 2070W  
14020W.

Line 14500W/

No Samples at 2405

L2

480s, 780s, 960s, 1020s PR.  
1200s, 1500s, 1560s,  
1860s, 1920s,

- All these were Perma  
frost or moose meadow. This  
line is on a North face so  
all samples taken were from  
Permafrost.

Notes on Samples taken:

- 00s - 20% Volcanic
- 60s - Heavy Org + Volcanic / 40%
- 120s - Gravel
- 420s - Volcanic + Organic / 40%
- 540s - 60% Volcanic
- 660s - 50% Organic
- 720s - Mostly Organic
- 840s - 40% Org + Volcanic
- 900s - " " "
- 1080s - 60% Org + Volcanic
- 1320s - 30% Organic
- 1620s - 70% Organic + Volcanic
- 1680s - 60% Organic + Volcanic
- 1800s - Very Good Sample / Brown dirt
- 1980s - 60% Organic

Line 14500W ended 60m P.R.  
west of small lake on map.

Line 14000W.

No Samples at 360N,  
420N, 600N, 1080N,  
1260N, 1560N.

- All were Permafrost and  
Volcanic Ash.

Notes on Samples taken:

00N - Good Sample

60N - 40% Volcanic/Organic

180N - " " "

480N - 60% Volcanic/Organic

540N - " " "

960N - " " "

1140N - 70% Volcanic/Organic

1200N - " " "

1380N - 50% Organic

1440N - 50% Organic

1500N - Poor Sample

1620N - Rocky Sample

1920N - " "

2040N " "

July 4<sup>th</sup>

21

P.R.

Lines 8500W and 9000W

Ran a topofil line to Tidd  
on  $105^\circ$  for 2.5 km.

Went South at  $195^\circ$  for  
2.2 km.

- Went West 500 m from  
1800s on ~~9000~~ 8500W to  
00N 9000W. Went 1800 m  
North at  $15^\circ$  to topofil  
line

Line 8500W from  
00S to 2160S.

- All samples were good  
dirt. Missed No Samples!

120S - 40% Org + Volcanic

240S - 25% " "

600S - 20% " "

[ Hit Claim line? at 1700s ]

Line 9000W from 00N to  
1800N.

22

No Samples at 1260N, P.R.  
1320N and 1380N - large  
Swamp!

- all other Samples were  
good samples! A-1 dirt!

1500N - 40% Org + Volc  
1740N - " " "

Tied into topofil at  
9050W 1740N.

July 5<sup>th</sup>

Lines 9500W 00N to 2160N  
 10000W 00~~N~~S to 2000~~N~~S

Went out from camp on  
 topofil line at  $195^\circ$  for  
 1.5 km. Headed North at  $15^\circ$   
 for 2160m. Went East on  
 $285^\circ$  for 500m. Headed South  
 on  $195^\circ$  for 2000m till I  
 hit topofil. Tied into  
 line at 10,020W and 2000S

Notes: Line 9500W

No Sample at 360N,  
 540N, 660N, 1140N,  
 1320N, 1680N, 1740N,  
 1980N. All were moose  
 meadow marshes

All other samples were  
 Good!

Notes: 10,000W

No Sample at 60s  
(creek) 420s, 480s, 540s  
(marsh) 780s, ~~840s~~, 960s  
1380s, 1440s, 1680s, 1860s

Ended at 1980s

June 6<sup>th</sup>

25  
P.R.

Line 10,500 W from  
00s to 2280s

No Sample: 900s

00s to 480s → Sand

540s and 600s - V. Good Samples

June 7<sup>th</sup>

Camp move!

to Camp III

June 8<sup>th</sup>

26

P.R.

Area A Line 129.5E

- Went 500m due West  
of east lake (Camp).  
This point was 00s/N

- Went 1200m S from  
00s to 1200s! Returned

- Went 840m N until  
I hit the 8500 west line  
at 540s for the A need grid.  
Samples from 60N to 840N.

- 1260s on A129.5E was  
at west tip of lake which  
the line was to have bisected

- Line A129.5E hits claim  
line at 1080s.

Notes: No samples past  
1200s because this was  
valley floor and, hence,  
marsh to well past the

1600S point. I walked out to where 1380 would be with no chance for a sample and decided to skip the rest as it was all the same.

- No Samples past 840N as this is where the line meets 8500 west for Anead Grid and it has all been sampled.

Samples taken:

60S, 120S and 600S

- Very Rocky

- 20% Volcanic

120N, 360N - Very Rocky

June 9<sup>th</sup>

28

PR

Line A 131.5E from 005  
to 2580s

- Went 1.5 km due east  
of camp then 2.6 km  
due South.

No Samples at: 480s, 840s  
and 2400s - moose meadows

- Samples taken:

- 1080s Near Creek, maybe  
Transported? Very Rocky

- 1800s, Very Rocky

Creeks at 1090s, 2300s  
and 2600s

Tues 23rd JUNE

Took a bearing of  
 $262^{\circ}$  off lake to  
starting point which  
was approx. 200 metres  
away.

saw uncrop 40 metres  
from lake along my  
bearing

A102E  
uncrop at 300-330S

First sample at  
A 102 E 60S  
to A 102 E 2400S

↑  
At end at 2400S  
it was approximately  
550 metres to River

These bags in  
pails ✓

Tuesday JUNE 23rd

let off here

walked 200  
metres  
west &  
started

605

was  
first  
sample

line A102 E

line A102, SE

200  
metres  
each  
square

came out at 24005  
my line ran a little bit  
to the east of the planned place

Wed 24<sup>th</sup> JUNE

A 104, SE 00N  
was starting point  
2160N was end.

1320N was cliff

1740N + 1800N  
were wet

1160N was wet.

600N was ~~the~~ out-  
crop. that might  
have been hidden  
from air.

I walked 200  
metres from  
edge of lake to  
reach 00N.

aprox. 300 metres to get  
to other lake at finish.

Wed JUNE 24<sup>th</sup> cont

No samples at:

A 104,5E

1320N cliff

1740N bog.

1800N bog

2160 N bog.

These bags in  
pail ✓



Thurs 25th

Went from pick up  
spot yesterday 700 metres  
East + 200 North  
A 105 E 005

Went down to  
A 105 E 1920 S went 500  
metres east & did not go  
~~to~~  
south & finished  
at ~~A 105~~ 1380 A 105, SE  
1380 N

No samples at:

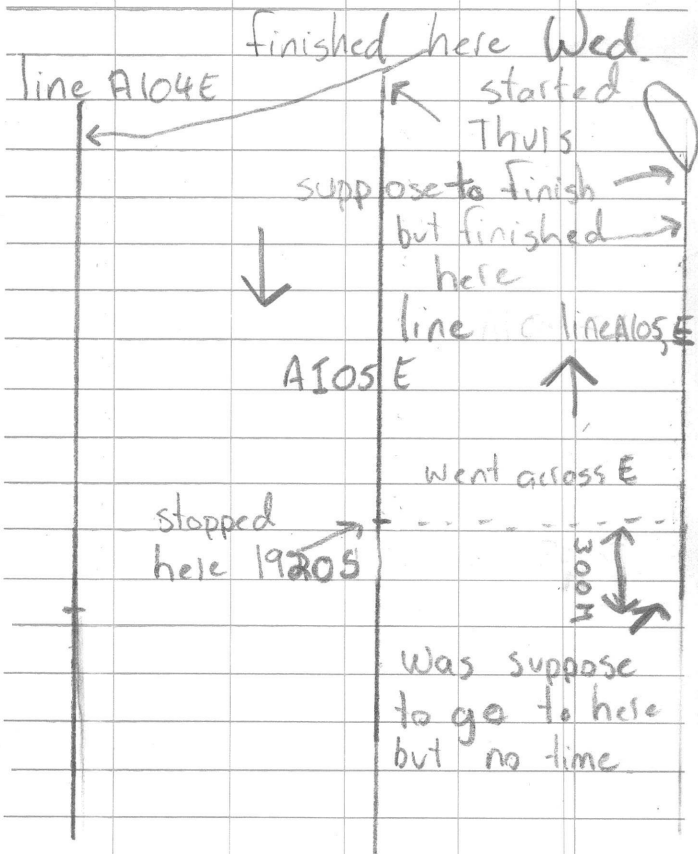
A 105 E 1080 S bog.

A 105, SE 1320 N bog.  
with small creek

These bags in pail ✓

Thursday JUNE 25<sup>th</sup>

1380 N last sample



each square  $\updownarrow$   
200 M.

Friday JUNE 26<sup>th</sup>

A114,SE + A115E

These lines were  
buggered due to  
not realizing where  
chopper drop was.



I came from down  
here  
I walked til 1140N then saw lake

after seeing the  
lake I veered  
west 200 metres and  
can't thinking it was  
the smaller lake  
which would have  
made me approx 200  
metres off course.

I then finished to  
A 114,5E 1800N and  
walked 500 metres  
East and hit lake  
(barely). I stayed  
there and was picked  
up by chopper.

I missed samples at

A 114,5E 900N,  
1020N, 1080N,  
1140N All were  
Boggy.

Fri, JUNE 25<sup>th</sup>

Samples have been  
pailed ✓

Sat. JUNE 27th

started 700 metres  
From drop off or  
500 metres above  
lake.

Went from ~~800~~  
118,5E 00S  
to 118,5E 2700S

Missing samples at

118,5E 360S, 600S,  
720S, 1380, 1440S,  
1500S, 1560S, 1620S,  
1740S, 1800S, 1860S,  
1920S, 2040S, 2100S,  
2160S, 2220S, 2340S,  
2400S, 2580S,

Rest of these bags in  
pails ✓

JUNE

Sat 27<sup>th</sup>  
cont

## Sample quality

Samples marked

L or H mean

L or high<sup>organic</sup> others  
not mentioned are  
normal

118,5E: 420 S is H

480 S is H

2280 S, H 660 S L

2520 S, H 900 S H

2700 S, **L** 960 S L

1020 S L

1140 S L

1200 S L

1980 S L

## Missed samples

A118,5E 1380 S to 1620 S was  
bog half way up my legs

JUNE Sat 27<sup>th</sup>  
cont

11

~~1900~~ A 118, SE 1680s  
to 1900s Bog

A 118, SE 600s  
was Veg. to rock  
with no B horizon

A 118, SE 720s was  
Permafrost.

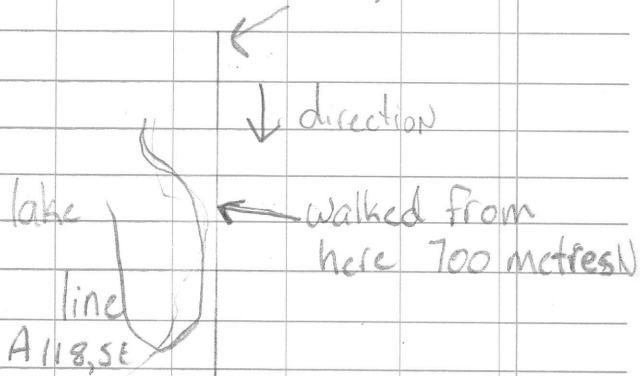
Any other unmention  
ed ones were  
just too wet.

Most of the day  
was through meadow

No problems with  
placement.

Sat JUNE 27th

first sample here  
A118,SE 00N



200m ↓  
each

finished here  
at A118,SE 2100N

MON. JUNE 29th

First work day of  
Fly Camp.

Did lines A119, SE  
+ A120 E

Walked from our  
camp which is close to  
line A121, SE hit Peter  
Robert's Line on A119 E  
and went back West  
500 M. to A119, SE  
+ did line. Started at  
00N + Finished at 2400N.  
Walked 500 M West  
to line A120 E

Line A120 E went  
from 00S to 1980S

29th

Line A 119, 5E

Sample quality

H - means high amount of organics

G - means a good quality dirt sample

If there is no letter it means the sample was average, meaning that there was some organics or clay.

00N to 2400N

119, 5E<sup>↑</sup> - 00N H,

120, H, 180H, 600 G,

660 G, 780 G, 840 G,

1080 G, 1200 H, 1320 G,

1560 H, 1620 G, 1920 G,

1980 G, 2160 G, 2220 G

~~2340~~ 2340 G

Missed samples <sup>29th</sup>  
119,5E

240 N 300 N

1440 N 1860 N 2280 N

These locations were  
meadows with bog, ∴  
samples not available

119,5E - additional  
notes

between samples  
1680 + 1800 there  
was what looked  
like old creek bed.

All kinds of gravel  
+ rocks

Overall my line  
ran about 75 metres  
W of where it  
should have therefore  
line A120E was the same  
amount West.

Line A 120 E 29th  
Sample quality

A 120 E 005 to 1980 S

005 H, 60 H, 120 G  
180 G 240 G 300 G  
780 H, 840 H 900 H  
1020 G, 1080 H, 1200 H  
1320 H, 1500 ~~1500~~ H  
1560 H 1620 H 1920  
H, 1980 H

Missed samples  
A 120 E from 005-1980 S  
600 S

60 S, 540 S, 660 S, 1140 S,  
1380 S, 1620 S, 1680 S,

last sample by creek

Tues JUNE 30<sup>th</sup>

2nd day of fly  
camp.

Did lines A120, SE  
& A121E

Walked from camp to  
line

Went down to creek  
(which was dry) and  
started at A120E OON  
& finished at 1980N

Sample quality A120, SE

00 N H, 60H, 120 G  
240 G, 300 G, 360H, 540H,  
600 G, 960H, 1020 G,  
1620 H, 1680 G, 1740 G, 1800 G  
1920 H,

1380 - 1500 were on  
a steep bank with small

30<sup>th</sup>  
pebblish size rocks

missed samples at -

480N, 660N, 1200N,  
1560 N,

This line went (as far  
as I can tell) where  
it was suppose to. except  
it was a little short -

A121E -

my line started  
about 200 M S of  
where it was suppose  
to .

Last sample of A121E  
was suppose to be  
2100<sup>at creek</sup> but 1980 was  
at creek instead.

30th

Sample quality  
A 121E

605 H, 120 H, 420 H, 480 H  
540 H, 960 H, 1080 H, 1500 H,  
1980 H,

Missed samples,

1260s,  
780s, 900s, 1140s, 1740s  
2040s, 2100s,

line ended approx  
the distance from camp  
it was suppose to.

Wed. 1st

Did line with Peter Roberts - he took notes.

Thurs 2nd

Did line with Peter & Peter. Kulich took notes - I dvg.

Fri. 3rd.

We decided on where our lines met the grid. -(ANURD).  
I did lines A 15,500 E + 15,000 W / 15,500 W was suppose to go 130M. past a major creek but line started at creek instead.

3rd

line went from 00S to 1560 S.

Sample quality

00 S G, 300 G, 600 H,  
1560 H

Missed samples at

ON line A15500W

360S, 480S, 840S, 1080S,  
1200S,

Quite a bad area  
for Permafrost. Not  
much sun hitting  
that side of hill.

Additional notes - inches  
1200 S was 00NW.  
creek.

420S was quite  
pebbly, gritty.

Walked 500M E to A15000W

3rd  
Sample Quality A15,000W  
00N to 1800N

120N, H, 180N, H,  
360N, H, 1260N, H, 1500N, H  
1560N, H

Missed samples. A15,000W

300N, 660N, 900N,  
1080N, 1200N, 1500N  
1620N.

This line was terrible  
in terms of frost,  
bog, and all kinds  
of 'shit'.

Nothing special in  
terms of outcrop  
just crap all the  
way down.

Got home at  
10:30 PM.

Sat July 4<sup>th</sup>

Fly camp.

Did lines A 12,500 W  
+ A 12,000 W

Walked from line  
A 11,000 W to starting  
point. Walked N.

line started at A 12,500 W  
00 N + went to 2220 N.

LINE was suppose to  
end at 2000 N.

Sample Quality A 12,500 W  
going N.

00 G, 60 G, 360 G, 420 G,  
480 G, 540 G, 660 G, 780 H,  
960 G, 1380 H, 1440 H,  
1560 H, 1680 H, 1860 H,  
2220 H.

My line hit B.L. at  
A 12640 W.

July 4<sup>th</sup> cont

At 1680 N there was  
much in-ground rock

Missing Samples.

A12,500 W

720 N, 900 N,  
1080 N, 1320 N, 1620 N

I walked to A12,000 W  
ON the B.L. and  
went South starting  
at 005 and ending  
at 2280 S.

Sample quality A12,000 W  
going 15.

180 H, 300 H, 660 H,  
720 H, 780 H, 900 H, 1080 H,  
1260 H, 1560 G, 1620 G,  
1680 G, 1860 H, 1920 G,  
1980 G,

I came out at A11,820 W

4th cont

Missing Samples for  
A 12,000W going from  
005 to 22805.

605 H, 5405, 9605,  
10205, 12005, 13205,  
13805, 17405, 18005,  
20405

Walked back to  
camp.

All lines tied on to  
each other.

July SUN 5<sup>th</sup>

Did lines A11,500W  
+ A10,500W.

Walked from line  
A11,000W to A11,500W

Started at 00N.

Sample quality for 00N  
to 1740 N. (line  
was suppose to be 2,000N  
chain was slipping).

00 G, 60 G, 180 H,  
240 G, 300 G, 360 G, 420 G,  
660 H, 720 H, 900 H, 960 H,  
1020 H, 1200 H, 1320 G,  
1440 G, 1500 H, 1560 G,  
1740 G,

Missing Samples

120N, 840N, 1260N

5th cont

1380N, 1620N,

I hit our BL at  
A11,600W

I then went to  
line A 10,500W and  
went South from  
00S to 2220S ON  
line A 10,500W.

Sample Quality A 10,500W  
00S to 2220S.

00S H, 60H, 240H,  
360 G, '420 G', 480 G,  
600 G, 660 G, 720 G, 780 G  
840 G, 900 G 1020 H,  
1320 G, 1380 G, 1380 G,  
1440 G, 1500 G, 1560 G,  
1620 G, 1800 G, 1860 G,

Missing Samples 10,500W  
960S, 1080S, 1140S, 1200S,

5th cont

## \* Special Notice

the line DRAWN  
ON MAP should  
be moved over East so  
that the line hits  
the confluence of the  
2 creeks. The map  
is marked.

7805 was where line  
hit confluence

The line on map  
shows the correct  
spot where line  
came out.

Mon. July 6<sup>th</sup>

Did line A 11,000 W  
from 005 to 2220 S  
This line goes thru.  
Camp

Sample Quality from  
005 to 2220 S.

605 H, 1805 H, 2405 H,  
360 S - 1020 S all G  
1205 - 2220 all G 5-50

line was cut short  
due to Huge Swamp

Missed Samples

300 S, 1080 S,

July 6th cont

All, 000 W 005 to  
1205 in a creek  
area -

July 7th

Camp move.

July 8th

3rd Camp.

Did line A136E  
which ran thru camp  
line went from  
00N to 2400N.

Sample 2 quality

60N - 300N all G  
420N G, 540N G,

8th cont

660N - 1200N Good

1380N - 1560 Good

1800N to 2400N Good

Missed Samples

1620N, 1320N, 600N  
480N, 360N,

Additional Notes

A130E/740N is big  
outcrop

1800N to 2400N all  
above treeline

Ended at a small  
creek at 00N.

May not be on  
map.

Thurs July 9th

Did line 131E  
walked along with  
Peter + Peter until  
my line. Went 350  
M down from the  
line we had taken  
from camp. Started  
on a creek (As map  
said to)

Sample Quality  
line A131E 005  
to 34805

005-G, 605-H, 1805-G,  
3005-5405 G, 6605 H,  
7205-G, 8405-10205 G  
10805-G, 11405-G, 12605-G,  
13205-G, 1440-1680-G,  
19205-G, 19805-G, 21005-G,  
21605-H, 24005-H, 25805-H  
27005-H, 2760-G, 29405-H,  
30005-H, 30605-H, 32405-H,

3300 S-H, 3360 S-G  
3420 S-H, 3480 S-G

Missing Samples.  
A 131E

600 S, 1200 S, 1380 S,  
2220 S, 2280 S, 2880 S,  
3120 S,

Additional notes.

2460 S + 2520 S were  
iced so contents  
were questionable  
probably High organic

720 S in creek gravel  
sample. Also there  
was another marker  
there which read  
2400E 1450N

This line ENDED  
Across the creek  
the way it was  
suppose to.

In Pails =

A100E 00N

to

A100E 1140N

and

A102,5E 00N

to

A102,5E 1680N

A100E 00N2 to 240N2

A103E 00S to 1680S

A106E 00S to 1800S

A112E 00N to 1090N

A112E 00S to 1990S

A118,5E 00S to 2700S

A104,5E 00N to 2160N

IN PAIRS:

A 114,5 E 00N to 1800N

A 102 E 60S to 2400S

A 105,5 E 00N to 1380N

A 105 E 00S to 1920S

A 100 E 00N to 1140N

A 100 E 00N2 to 240N2

A 102 E 60S to 2400S

1.) A10 E 00N-1500N  
A10 .5E 00S-1020S

2.) A101.5E/080S-  
2160S

A101E2 00N-  
540N

3.) A107.5E 00S-  
1440S

A107E 00S-540S

4.) A107E 60N-1140N  
A103.5E  
080N-1980N

5.) A104E

00S - 840S

A103.5E

00N - 1020N

A 04E 900S - 1380S

6.) A 113.5E 00S - ~~1410S~~  
1410S

A 14E 00N -  
1500N

7.) A 118E

00N - 000N

60S - 2040S

JUNE 23/81

P.K.

START TRAVERSE 175m FROM LAKE  
IN large clearing.

101E 60N N.S. org. PERMAFROST

101E 960N NS " "

101E 1020N NS " SWAMP

101E 1560N NS org. PERMA

101.5E 300S NS org. PERMA

101.5E 720S NS " "

101.5E 780S NS SWAMP

101.5E 1440 NS SWAMP

END TRAVERSE AT 101E2 597.7m

!!! only 8 feet from beginning And

10 m. short (the 40 m. from

101.5E 2160 to 2200 which I ignored.

NOB

24/81

P.K.

Begin 103.5E 125 m from lake  
near two ponds.

103.5E 60 N NS - Swampy

103.5E 1680 N NS Swampy

104E 120 S NS org. ponds

104E 1020 NS

104E 1080 NS

Swampy

END AT 1400 M S AT LAKE  
100 M SHORT.

25/81

PK

BEGIN TRAVERSE 75m W from LAKE

107.5E

107.5E 420S NS PERMA Org

END TRAVERSE 1440S

about 100m to west of S

WALK 400m W

Sample south 540m

A107E 60S NS BERMORG.

others are dubious - org/ASH/SAWD

Sample north on A107E From 00S

A107E 120N NS - ORG PERM

END TRAVERSE 1140N

150 M E of lake

50 M S of lake

IE  
(S)

20/81

Begin traverse 500 m E of lake

AT?

A114E 00N

300N

360N

420N

480N

600N

- near 2 km boulder

loose rocks 15cm under.

PERMAFROST - dry + ASH

NO SAMPLE

Cut 500 m W. AT 1500N

A113.5E 840 S - NS. PERMA → ASH

1140 S → NS PERMA → ASH

TIE into lake at ≈ 1480 m.

slightly off true and  
followed road last 100 m.

instead of sampling the lake

27/81

P.K.

START A118E AT LAKE

00N - NS ASH PERMA.

360 N

420 N

480 N

500N

- clay - grey

on sloping plain → Till?

560 N

(boulders)

↓

740 N

CLAY

800N

- NS

SWAMP.

Thread cut at 918 N

- piece to 940N + 10 M E off line

- piece to 1000N + 30 M E off line

END line 150 M(?) from Esker.

A118E 60s - 240s clay

300s - 960s - hard pack dirt w. sm. stones

1020s - 1NS - SWAMP

1200s - sandy + sm. pebbles

hit creek at 1250s. next sample at 1300s

27/81

PK

118E S (unit)

1420 S } Rocks + Mud  
1480 S }

1600 S instead of 1580

END line at 2040 S.  
ACROSS SWAMP.

6/29/81 P.R. AREA "A"

125E

START TRAVERSE ON KNOLL

300 M W AND 300 M N of sm. Lake

00S BEDROCK CLOSE TO SURFACE

200S - MARSH (ENDS AT 315S)

315S SAMPLED - grey clay

MARSH 400S to 500S

480S SAMPLED on hillock - clay

720S - NS PERMA - ASH + organ.

780S - NS - MARSH

creek at 891S

880S - SWAMP

960S - organic instead  $\Rightarrow$  975S

AT 1150S discovered that

Topofil has been slipping possibly for some distance

$\Rightarrow$  cross 500M W to 124.5E

And try to tie into lake.

Total lost M.  $\Rightarrow$  800  $\therefore$  Line was 1950

in reality, samples were taken where it was possible, due to extremely swampy conditions. So disregard the S.No as being in meters and average it out!

6/29/81

P.K.

Area "A"

Line A124.5E was well done.

Large BOG  $\Rightarrow$  very tricky walking  
due to dangerous floating vegetation  
Missed samples from

480 N through to 800 N as result  
AND TIED into stream which drains  
small lake at 1075 N.

This places the 125E LINE AT  
ITS correct endpoint of  $\approx$  1950 m. S

Followed creek, which became  
swampy, downstream for 500 m to

line 124 E

00N - NS  $\Rightarrow$  SWAMP

STREAM FROM lake at 120 N

120 N NO SAMPLE  $\Rightarrow$  organics

Tied into another creek at 550 N

where I ended the line

ENDED South line at a creek  
at 450 S.

Generally, all samples were a mixture  
of clay and small rocks, with a  
few exceptions of real dirt!

6/30/81

P.K

Area "A"

Continue line A124 E FROM CREEK AT 450S

480S good 10% root hairs, grey

540S Mud + sm rocks - brown. lrg rocks 15cm. Dam

600S red dirt - brown

660S coarse mud black

720S yellow grey mud

780S grey clay

840S N.S. organics → SWAMP

900S grey/black mud with small sharp rocks

900S gr. mud

1020S gr/bl clay

1080S gr. yellow mud.

1140S NS permafrost in marshy ground

1150S br. Mud

A123.5E cut 500 m w to 123.5E

120S gr soil

60S bl/gr soil

00N gr. clay

60N gr. clay

120N gr. soil

180N gr. organic BR. SANDY soil - Swamp Area

240N NS } organic permafrost

300N NS } in swampy condition

30/6/81

PK

AREA A

line 123.5E cont

360N permafrost - mix of sand + organics

420N grey COARSE soil

480N ~~NS~~ permafrost - org + Ash

540N root hairs - gr. MUD.

600N gr mud

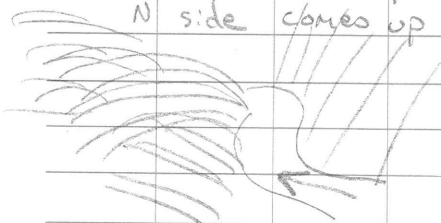
Tie into MAJOR CREEK A 640N

COULD BE A FAULT LINE HERE

STEEP canyon walls

South side slopes into stream

N side comes up to stream



WORTH A LOOK?

Outcrop across river at

: 123.5E 1440N

: 123E 00S

660N br. Soil

720 br. Soil

780 } gr. mud

840 }

900 gr mud

960 gr. mud

6/30/81 Pk. Area A

123.5 E CONT

1020N NS perme, organic

1080 br soil

1140 } gr. Mud

1200 }

1260 NS - SWAMP - perme,

1320 BL/Gr soil

1380 BL soil

1440 Gr/BL. Mud

Tie into <sup>Above</sup> confluence which is visible below end of line

Follow hill to 123E, 500m, instead of going down to cr (Swamp) AND back up to 00S on 123E.

Verified by topography

123E

00S coarse sand

60S - very rocky  $\Rightarrow$  mix of sand org + Ash

120S }

180S } NS perme organics

240S } lg. rocks under moss

300S mix of ash, sand + org.

360 yellow mud

|                         | PIC                   | Area A           |
|-------------------------|-----------------------|------------------|
| 420S                    | line A123E            | can't            |
| 420S                    | } NS                  | Perma + organics |
| 480S                    |                       |                  |
| 500S                    |                       |                  |
| 560                     | br soil               |                  |
| Tied into creek at 586m |                       |                  |
| 685S                    | organics + permafrost |                  |
| 740S                    | gr. Mud               |                  |
| 800S                    | gr Mud                |                  |
| 860S                    | NS permafrost         |                  |
| 920S                    | gr. muck 50% organic  |                  |
| 980S                    | yellow mud            |                  |
| 1050S                   | gr mud                |                  |
| 1110                    | - Swamp               |                  |
| 1140                    | gr. soil              |                  |
| 1200                    | br soil               |                  |
| 1260                    | " "                   |                  |
| 1320                    | organic + P.F.        |                  |
| 1380                    | NS                    | P.F.             |
| 1440                    | NS                    | PF.              |
| 1540                    | } Coarse gr. sand     |                  |
| 1600                    |                       |                  |

Cut 500 m W to 122.5E

meet it at 405 m !!

either top half of grid is wt 1m out, or  
 Peter is out.

2/7/81 AREA A PK.

ANERD GRID

11,000 w

00N - poss. Alluvial 20% org.

60N br soil

120N br. soil

180 } NS perme org + ASH

240 }

300N gr sand

420N " "

480N " "

540N bl. dirt 30% org

600N br/gr. soil

660 gr mud

720 gr. soil

780 gr/br soil 20% org

840 gr soil

900 gr. soil

960 gr. soil 40% org

1020 gr mud 30% org

1080 gr soil

1140 NS perme - org.

1200 NS perme

1260 gr muck

1320 " "

1380 " "

2/7/81 Area A Aneid Grid PK

11,000 w can't

1440 gr/bl soil/clay 40% org.

1500 gr. muck

1560 " "

1620 gr/br muck

1680 " "

1740 NS valley bottom  $\Rightarrow$  organic

1800 gr. muck 40% org.

1860 gr muck

1920 gr. muck

1980 yellow/br soil

2040 } NS organic permafrost

2100 }

2160 }

2220 dry soil from deadfall  $\Rightarrow$  OUTCROP

2280 br. soil

2340 br. soil

2400 br. soil

2460 b/gr soil

2520 gr/clay

3/7/81

Area A P.K.

START TRAVERSE 13,000 W Averd grid

~~600~~

Topsoil in TL Line 1500 S

our 11,000 W line 200 m off lake

⇒ corrected TL 1500 S by chaining  
up from lake to 2200 (lake was  
1800 N from camp's lake) and  
ran the line 4500 m west  
on  $285^\circ$

line 13000 W running S

00 S } perme high in org + Ash (40%)  
60 }  
120 }

180 gr/br soil

240 " "

300 brown soil

360 Same Ash + Org - gr soil

420 gr soil - Perme frost 40% org, + Sand

480 " " " " "

540 gr mud

600 yellow mud

660 gr soil

720 organic + gr soil

780 org + coarse gr soil

3/7/81 | AreaA | Amund | Grid | Polk.

13,000 w corit

840 } NS perme - organic

900

960 coarse gr mud

1020 NS org perme

1080 NS " "

1140 P. Frost org + br mud

1200 60% org. Perme.

1260 br mud

1320 gr. quck

1380 mostly (60%) org + gr sand

1440 gr. mud

1500 " "

1560 70% organic - couldn't go any deeper

1620 NS perme frost

1680 gr mud

1740 " "

1800 br soil

1860 NS perme

END LINE

last 200 m. goes through  
plateau of swamps.

Cut 500 m W to 13500 W

3/7/81 "A" Aneid grid P. G.

13,500 line w running N

00N NS perma

60N br soil

120N gr soil

180 } NS perma - org + Ash  
240 }

300 gr mud from overturned tree

360 gr. mud

420 br soil

480 br soil

540 " "

600 NS perma F. Ash

660 permafrost equal parts Ash, org + gr. mud.

720 Fire (last year?) Br Soil

780 " " " "

840 "Gr soil

900 gr. mud

960 P.F.  $\frac{1}{2}$  org and  $\frac{1}{2}$  sand

1020 " " " "

1080 NS permafrost

1140 P.F. gr.

1200 gr muck

1260 P.F. o + sand + gr mud.

1320 gr muck - Perma

3/7/81 | Amend Grid | Pl. Area A

13500 line w cont running N

1380N NS P.F.

1440 P.F. org + gr. med

1500 br P.F.

1560 NS P.F. org

1620 P.F. organic and gr. med.

1680 gr Mud

1740 NS P.F. MARSH

1800

1860 } P.F. org + Gr med + sand

1920

Tied into 15000 line A1

: 1944 N

13520 w

Area A | 4/7/81 | PK | Aired grid

Round line from 11000 W 00 N  
East on 105° 2500 m.

From that line?

~~Round~~ running N line 8500 W

00 N }  
60 } P.F.  
120 }

180 N NS P.F.

360 NS on Talus

420 B. soil on Talus

480 " " " "

540 org + gr. mud " "

600 }  
660 } NS

on open Talus

1260 NS perme

1440 PF 50% ash

1680 NS marshy

last sample 2160 N

most samples Average - gr. soil or mud.

Cut 500 m W to L. 9000 W

line 9000 W running S

00 S }  
60 S } P.F.

Area A 2/7/81 PIC Aneid grid

9,000 w cmt. running S

1205 P.F.

480 Br. Soil - lots of rocks

600 } NS valley bottom

660 } NS lots of water + organics

1140 } high organics + sand

1380 } NS buck brush, water, organics

1440 } all transported from slopes

1500 NS Swamp

1800 Perme - NS

1980 NS - perma

Tied into line at ~~9050~~ 9050 w

lost sample 2100S

5/7/81 Area A Amend Grid P.K.

line 9500 w running S

00S - 400S - br soil excellent S

540 NS - swamp

780 }

840 } 40% org 40% sand + rocks

900 - 1320 Br. Soil or br soil - good

1380 } gr mud

1620 } transported from uphill

All samples quite good

end line 1800 S + cut 500 m to

line 10000 w running N

00N - 300N Brown Soil EX.

All samples good to 1260N

1260N NS - Swamp which runs

1260N - 1620N  $\Rightarrow$  NS

1980N NS - swamp.

~~Be~~ last sample 2100N

Tie into line at 2190N

and 10,040w

Area A 6/7/81 Anerd Grid P.k.

Met 11,500 W 550 W of 180 S 11000 W  
and walked 50 M S to 11,500 00 N

60 S taken 30 m E on hill

120 S NS - valley bottom - only org.

180 S on hill - good br. soil

480 } NS permafrost org + Ash

540 }

Hit stream at 800 M

900 } NS plateau - Swamp

960 }

1140 NS - Swamp

1260 }

1320 } NS - Swamp

1380 }

1500 }

1440 - From swamp 50% org

lost Sample 1620 S

walked from 1620 S to 2300 S

through a series of swamps, little drainages and loose boulders covered with organics. It seemed profitless to continue as all was organic, and was transported from all over the hill!

8/7/81

Area A

P.K.

line 130.5E

500 m. From Camp.

\*lost my FELT pen so stations are  
FLAGGED BUT NOT MARKED

~~All~~ samples were taken every 60m  
there were no holes

Starts at 005

hits creek at 21605

ENDS 22805

Most samples were br. soil (90%)

Area A

9/7/81

P.K.

LINE A 132E

00S-840S - good br/gr soil  
recently burned off. (1-2 yrs)

900S

960S

NS

swampy - organics

STREAM AT 1320S

1500S - gr MUCK

2160S

2400S

2580S

2640S

NS

lowlands, org. or P.F

HIT STREAM AT 2430

HIT STREAM AT 2680S

lost sample 2660S

all samples, unless otherwise noted  
were gr/br soil.

Fly camping : Start <sup>1</sup>  
Monday the 3rd of  
Aug.

MONDAY. The 3rd. +  
Tuesday the 4th  
Moved out of Ross  
+ set up part of  
camp. Storm  
came by blowing  
tents around which  
forced us to  
use Tuesday to set  
up camp properly.

Wednesday the 5th

Did lines A 131E<sub>2</sub> +  
A 131, SE<sub>2</sub>

No missing samples from  
both lines.

Sample quality.

G - means good sample  
low veg.

H - means a high amount  
of organics.

No letter means an  
average amount of  
organics.

A 131E2

|          |           |       |
|----------|-----------|-------|
| G 2200 S | G 12000 S | 200 S |
| 2100 S   | G 1100    | 100   |
| 2000     | G 1000    | 100   |
| G 1900   | G 900     | 00    |
| 1800     | G 800     |       |
| 1700     | 700       |       |
| 1600     | 600       |       |
| 1500     | G 500     |       |
| 1400     | 400       |       |
| G 1300   | 300       |       |

## Sample quality

A 131, SE

|   | 2300 N | 900 N          |
|---|--------|----------------|
| G | 2200   | 700            |
| G | 2100   | 600            |
|   | 2000   | 500            |
|   | 1900   | 400            |
| G | 1800   | 300 outcrop    |
|   | 1700   | 200 ↓          |
|   | 1600   | 100 ↓          |
|   | 1500   | 00 N ↓         |
|   | 1400   | 15 100 M above |
|   | 1300   | lake we were   |
|   | 1200   | camped on      |
|   | 1100   |                |
|   | 1000   |                |
|   | 900    |                |

Thursday the 6th

Did lines A 133E<sub>2</sub>  
+ A 133,5E<sub>2</sub>

Missing samples A133E<sub>2</sub>

|      |  |
|------|--|
| 00 N | All swampy - A big<br>Swamp about 2 KM<br>long KM wide |
| 100  |  |
| 200  |  |
| 300  |  |
| 400  |  |

600 - Permafrost.

700 - I was short coming back  
down to line

| hit        | Sample Quality A 133E <sub>2</sub> |        |   |
|------------|------------------------------------|--------|---|
| line 800 N | 1400 N                             | G 2000 | G |
| 900        | G 1500                             | G 2100 | G |
| 1000       | 1600                               | G 2200 | G |
| 1100       | G 1700                             |        |   |
| 1200       | 1800                               |        |   |
| 1300 N     | 1900 N                             |        |   |



# Missing Samples

A 133, SE2

- 00 N
- 100 Swamp +
- 200 Bog.
- 300
- 400



# Sample Quality A 133, SE2

|       |   |        |   |        |
|-------|---|--------|---|--------|
| N 500 |   | N 1000 |   | N 1500 |
| N 600 | G | 1100   |   | 1600 G |
| 700   |   | 1200   | G | 1700   |
| 800   |   | 1300   |   | 1800   |
| 900   | G | 1400   |   | 1900   |

outcrop all up side  
 of hill between  
 1200 + 1600 N. + on  
 top.

Friday the 7th.

Peter and I walked  
out to do lines  
but changed plans  
due to shitty shitty  
bush. He has notes  
of the line we did.

Saturday the 8th 8

Did line 134,5E

No missing samples.

Sample Quality.

|        |         |        |
|--------|---------|--------|
| 00N    | 700N G  | 1400H  |
| 100    | 800 H   | 1500 G |
| 200 G  | 900 H   | 1600 G |
| 300 G  | 1000 H  | 1700 H |
| 400N G | 1100 H  | 1800 H |
| 500 G  | 1200 G  |        |
| 600 G  | 1300N G |        |

SUNDAY the 9th

Camp move.

MONDAY the 10th

Did lines A138E +  
A138,5E

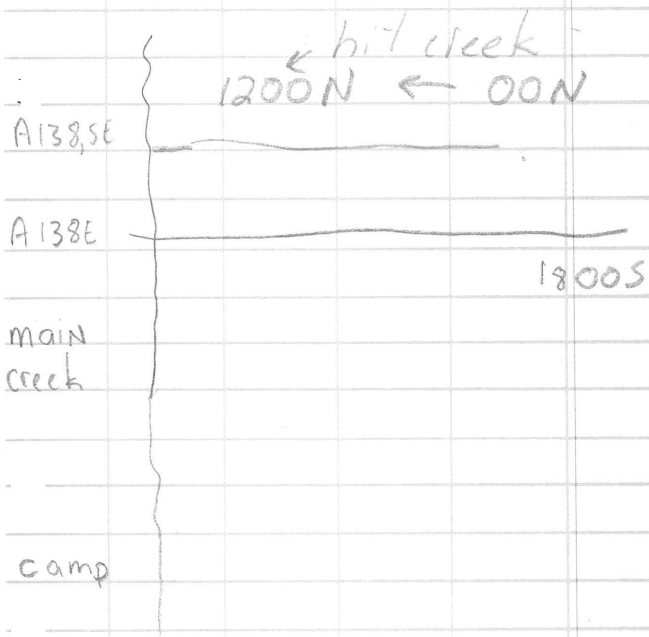
1500S only missing

sample - Bog  
Sample quality A138E

|      |   |      |   |      |   |
|------|---|------|---|------|---|
| 00S  | G | 800  | G | 1600 | G |
| 100S | G | 900  | G | 1700 |   |
| 200  | G | 1000 | G | 1800 |   |
| 300  | G | 1100 | G |      |   |
| 400  | G | 1200 | G |      |   |
| 500  | G | 1300 | G |      |   |
| 600  | G | 1400 | G |      |   |
| 700  | G | 1500 |   |      |   |

LINE A 138,5E -

I was suppose to come  
back 1500 M to main  
creek but I hit creek  
at 1125 M.



Sample quality  
A 138, SE<sub>2</sub>

"

|       |        |
|-------|--------|
| G 00N | G 800  |
| 100   | G 900  |
| 200   | G 1000 |
| 300   | G 1100 |
| 400   | G 1200 |
| 500   | 1300   |
| 600   | 1400   |
| G 700 | 1500   |

ON main  
creek

No missing samples.

\* Important.

These lines are added ON to owing to the fact that we had camp in the wrong spot from what we thought

Jw/ Tuesday 11th

12

Did line 137,5E from  
1005 - 3500,5

Missing Samples

29005 - P.F.

Sample Quality :-

All samples from  
1005 to 27005 were  
all GOOD samples

The rest were OK  
samples.

This line is  
drawn on the main  
map as well as it  
can be shown.

no good tie-in  
points

Jw

Area A

13

Wed 12th

Did line A 136, 5E.

## Sample Quality

|        |          |          |
|--------|----------|----------|
| G-00 S | G 1800 S | G 3600 S |
| G 100  | G 1900   | H 3700   |
| G 200  | G 2000   | 3800     |
| G 300  | G 2100   | H 3900   |
| H-400  | - 2200   | 4000     |
| H 500  | G 2300   | G 4100   |
| H 600  | G 2400   | G 4200   |
| H 700  | 2500     | G 4300   |
| H 800  | G 2600   | G 4400   |
| G 900  | 2700     | H 4500   |
| G 1000 | 2800     | 4600     |
| G 1100 | 2900     | 4700     |
| G 1200 | 3000     | 4800     |
| G 1300 | 3100     | 4900     |
| G 1400 | 3200     | H 5000   |
| G 1500 | 3300     | H 5100   |
| 1600   | 3400     | 5200     |
| G 1700 | G 3500   | G 5300   |

Wednesday 12<sup>th</sup> 14  
Missing Samples.

A 136, SE

1600 S

2200 S

2500 S

3000 S

5200 S

When we got back to camp we all knew that our camp was in wrong spot. This line is drawn on map anyhow.

This day. The 13<sup>th</sup>

A reconaissance day.  
to place where  
our camp was.

We found out where  
we were!!!!

Friday The 14<sup>th</sup> 16

Drill lines

136, SE<sub>2</sub> + 137 E<sub>2</sub>

Sample quality:  
for line

136, SE<sub>2</sub> goes  
South

Only High organics  
were marked.

300 S 4200 S  
900 S 4300 S  
2400 S 4400 S are all  
3700 S High.  
4000 S

Missing sample at  
1300 S only.

\* This line is an  
addition to 138, SE

Friday 14th 17

LINE 136,5E2  
(goes N)

Sample Quality.  
for 136,5E2

Only High organics  
were noted.

400 N -  
2500 N - All High  
2700 N =  
2700 N - Organics  
2900 N =  
3900 N =

\* Missed.

2300 N + 2600 N  
were not taken

Sat 15th

Old lines

137, SE<sub>3</sub> + 135, SE

Both lines drawn on map

Sample Quality  
for 137, SE<sub>3</sub> (which  
goes South)

Only High organics  
were marked

|      |   |   |               |
|------|---|---|---------------|
| 2900 | S | - | ↑             |
| 3700 | S | - | all High<br>↓ |
| 3900 | S | - |               |
| 4100 | S | - |               |
| 5600 | S | - |               |
| 5700 | S | - |               |

Missed Sample  
137, SE<sub>3</sub> - 1800 S

Sat 15th  
line 135, SE

Sample Quality  
135, SE - (which  
goes North)

Only High organics  
were mentioned.

00 N  
100 N  
200 N  
300 N All  
500 N High  
1000 N  
1800 N



No missed samples  
ON line 135, SE

SUNDAY the 16<sup>th</sup>

Did lines -

A138E<sub>3</sub> + A138E<sub>4</sub> +  
A 138,8 E<sub>4</sub>

No missed samples  
on all lines

Sample Quality

On line A138,8 E<sub>4</sub>

00

100 - All High

800

1000

A 138 E<sub>3</sub> + A138E<sub>4</sub>

had no high samples

over page

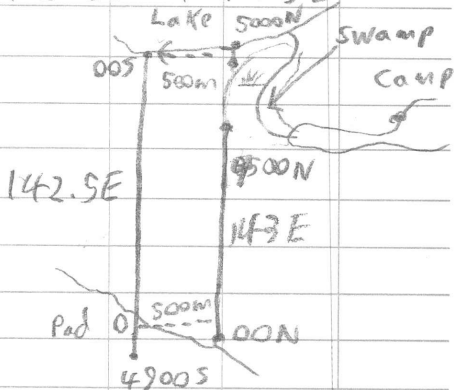
All lines have  
been drawn on  
maps. Little diagrams  
would not make  
any ~~more~~ difference

Wed 19<sup>th</sup>

Area A

PR/JW

Lines 142. SE + 143E



Walked to large lake shore,  
to end of Line 143E, then  
walked 500m west.

Sampled from 005 to 4900S  
on 142. SE. Cut Pad at  
4500S on River. Walked 500m  
east + Sampled up Line  
143E from 00N to 5000N on  
large Lake.

Line 142 SE 005 to 4900S

005 - High Org

1100S - No Sample

2800S - " "

Line 142E cont

2900S - High Org

3900S - No Sample

4200S - " "

Tied into Creek at 4500S

Line 143E

00N - No Sample - Swamp

100N - " " - "

200N - " " - "

300N - " " - "

500N - " "

1800N - High Org

3100N - " "

3300N - No Sample - Swamp

3400N - " " "

3500N - " " "

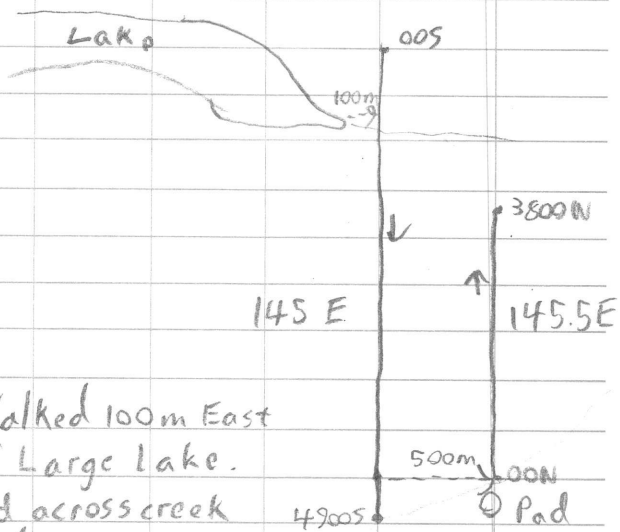
4600N - " " "

4700N - " " "

4800N - " " "

All other Sample  
were Good.

Thurs 20<sup>th</sup> Area A PRY/JW  
 Lines 145E and 145.5E



Walked 100m East  
 of Large Lake.  
 and across creek  
 and up North 300m.

Sampled from 005 to 4900S.

Cross 500m East From 4700S  
 cut Pad. Sampled up line 145.5E  
 from 00N to 3800N.

Line 145E 005 to 4900S

- 005 - High Organic
- 1005 - " "
- 3005 - No Sample - B0G
- 6005 " " - B0G

Line 14SE cont

|        |   |              |         |         |
|--------|---|--------------|---------|---------|
| 700 S  | - | No Sample    | -       | BOG     |
| 800 S  | - | "            | "       | - BOG   |
| 1600 S | - | Top of hill, | Outcrop |         |
| 2100 S | - | No Sample    |         |         |
| 2200 S | - | "            | "       |         |
| 3100 S | - | "            | "       |         |
| 3500 S | - | "            | "       |         |
| 3900 S | - | "            | "       |         |
| 4000 S | - | "            | "       |         |
| 4100 S | - | "            | "       |         |
| 4400 S | - | "            | "       |         |
| 4700 S | - | "            | "       | - Swamp |
| 4800 S | - | "            | "       | - "     |
| 4900 S | - | "            | "       | - "     |

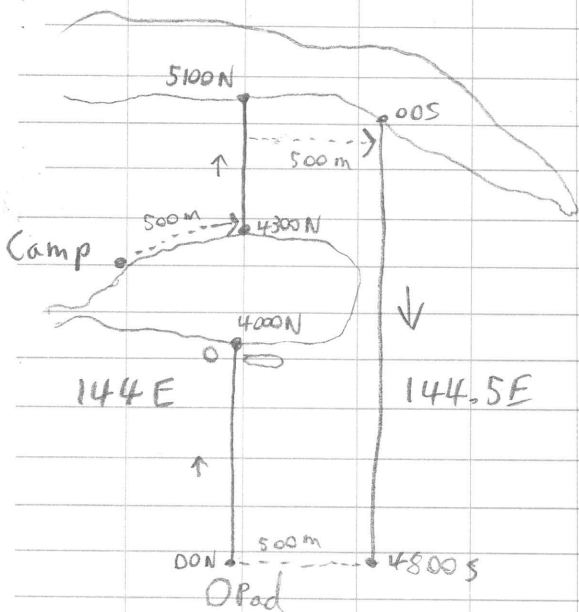
Line 14S - SE 00 N to 3800 N

|        |   |              |
|--------|---|--------------|
| 400 N  | - | No Sample    |
| 700 N  | - | High Organic |
| 1400 N | - | "            |
| 2400 N | - | No Sample    |
| 3200 N | - | High Org     |

Fri 21<sup>st</sup>

Area A

PR/JW



Walked out of camp 500m along lake. Sampled up 144E from 4300N to 5100N. Cut from Line 144E went 500m West to line 144.5E. Sampled from 00S to 4800S. Cut 500m West and made Pad. Started up line 144E from DON to 4000N. Tied into lake at 4000N between two smaller lakes

## Line 144E

600N - No Sample

800N - "

2100N - "

2800N - High Organics

3900N - No Sample

4300N - " "

4900N - High Organics

5100N - No Sample

## Line 144.5E

1700S - No Sample - Permafrost

2200S - " "

3300S - " "

3800S - " "

4000S - Dat Crop

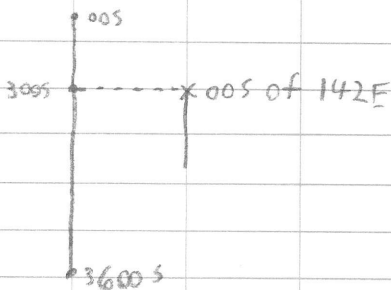
Rock Samples taken on  
Line 144E at 700N,  
1200N and 1350N

Sat 22nd

Area A

PR/Sur/PK

Line 141.5E 00S to 3600S



All walked out to start of  
142E, then went 500m West  
to 141.5E. Started line 300m  
North. Stopped at 3600S because  
of large marsh. Went East and hit 142E  
Line 141.5E

300S - No Sample

700S - "

1000S - " - Creek/marsh

1100S - " - Creek/marsh

2900S - "

3300S - "

3400S - "

3600S - " - marsh

All others OK.

Sat 22nd (cont) Area A

PR/PR/JW

Moved Samples around to  
bigger pads!

James and I pick up Rock  
Samples on Line 144E at  
700N, 1200N and 1350N.

Sun 23rd

Camp Move!



Monday 24<sup>th</sup> Area A PR/JW

Line 140E 2 00N to 1600W

1300 N )

1400 N }

1500 N }

- No Samples, big  
Swamp around  
Lake

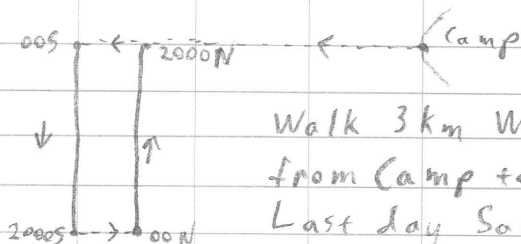
All other Samples V-Good.

Tied into lake at 1500N  
and 150m East of lake

Tuesday 25<sup>th</sup>

Area A PR

Lines 138 E 5 + 138.5 E 5



Walk 3 km West  
from Camp to line!  
Last day Sampling  
and probably the  
shittiest bush yet!  
Typical!

Line 138 E 5 from 00S to 2000S

300S - No Sample - Quagmire  
1200S - High Org  
1700S - High Org  
1800S - No Sample - Quagmire  
1900S - High Org.

All other samples were of  
the finest Quality!  
No Outcrop

Tues 25<sup>th</sup>

Area A

PR

Line 138.5E 5

00N - High Org.

400N - No Sample

1600N - High Org.

2000N - High Org.

Tuesday 25th

did lines A139E &  
A139,5E

my lines beside  
Peter Roberts.

Sample Quality for  
line A139E<sub>2</sub> which goes  
N

00 is H. all the  
rest are good.

Missed Samples for  
line 139E<sub>2</sub>

100

500

600

900

Tuesday 25<sup>th</sup>

line 139,5E2 (goes S.)  
Sample Quality  
1200s - is H

700 s  
1500 s were missed

100

A130E2 - 400N highberg

50%

500N

"

A130E2

stream at 993N

→ Gully + outcrop

END 1800N

A130.5E2

due to miserable condition of brush left 200 m undene at top of line

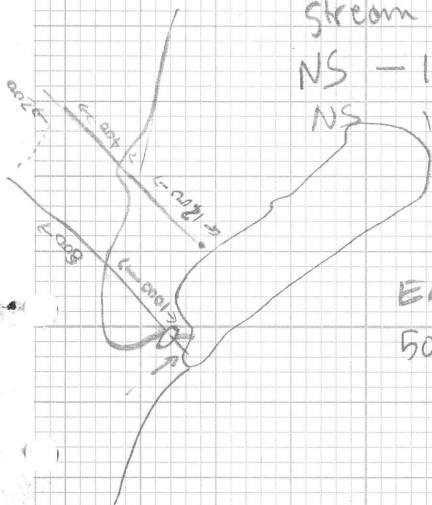
stream at 400 S

NS - 1200S - SWAMP

NS 1300S - NOT

WAS HERE

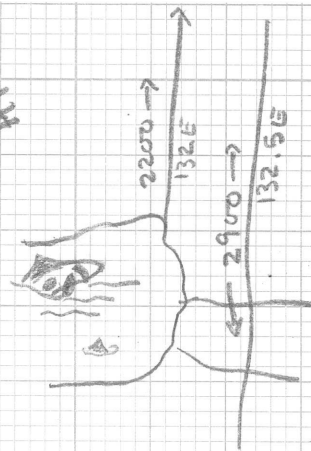
only orig Ad



END 1600S

50m From LAKE

132E  
132.5E



132E

00N - NS → LAKESIDE organics  
checked for 30m N but  
NO 90

500 N }  
600 N } 50% organic

END AT 2200N

LINE WANDERS IN places due  
to excessive buckbrush

L132.5E

HIT our E line at 2158S

last 5 samples very  
poor - can't get below org.

135E

Aug 7/81

300N - NS  $\Rightarrow$  P.F.

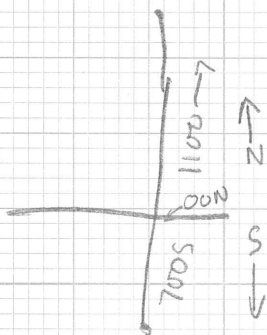
600N - NS  $\Rightarrow$  marshy

!!!

4 hrs to line

4 hrs to do 1800 m!

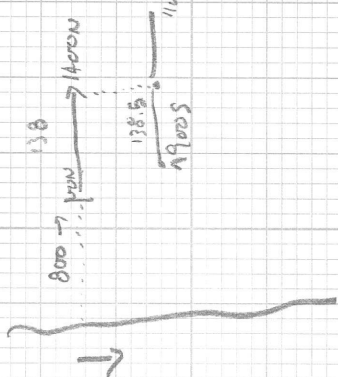
Aug 8 Area A PK  
LINE 134



All samples good to excellent  
except 600N which had  
about 40% organics.

Aug 10, 81 Area A PK.

lines 138E + 138.5E



138E

600N - 600N - all samples gr. clay

700N - br. soil

1200 br soil

END 1400N

cut 500 m E TO 138.5E

300N - NS  $\Rightarrow$  Permafrost!

550 - 750N - dry lake - on W side of lake

800N - NS  $\Rightarrow$  Permafrost + org

OVER

From a 700 am was following  
a series of swamps/lakes. They  
shouldn't be there, and I think  
I am on the wrong side of them  
by maybe 100m.

138.5E

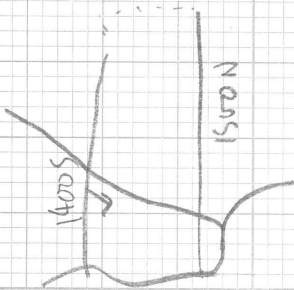
1005 - NS - org + permafrost  $\Rightarrow$  Swampy

5005 - NS - permafrost

END 9005

Aug 11 / 81

PK Area A



137.5 →  
900N - NS - plateau of swampstop  
1400N " " " " " " " " " " " "  
1500N ~~~~~

137  
800 - NS - swampy  
700 " "  
1100 NS - per area - swampy

END 1600 S at creek

Aug 12/01 Area A

Lines 136E

1000 S - NS Dermelast

1300 S NS " " organic

2400 S NS NO DIRT!

4000 S NS → " "

END AT 4000 S

Two wasted days ⇒ lines  
are in the wrong place

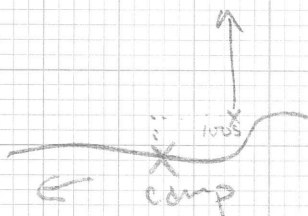
but we can use them

Aug 14/81

line 136E2

WALK up ~~the~~ S bank of

Stream 250 m W of camp  
and start 136E2 there at  
100S continuing S to 600S

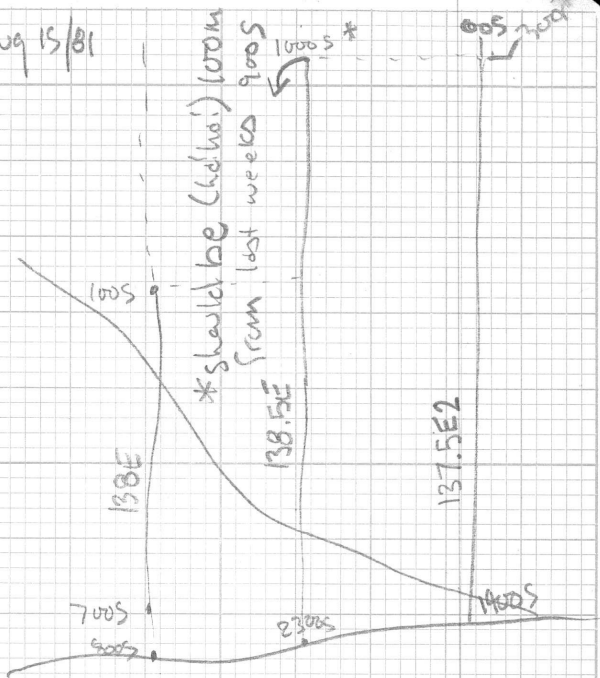


4700S NS - NO DIRT

END AT 5800S -

getting tired and the  
samples aren't that great  
Buckbrush ahead!

Aug 15/81



→  
LINE 138E 700S - 100S

All good to EXCELLENT  
 Except 200S → 40% org.

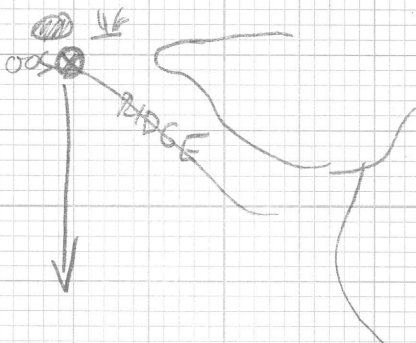
LINE 138.5E

1000S 50% organic  
 All the rest gr clay  
 Except 2300 + 2200 S → br Soil

LINE 137.5E2  
 00S - 1400S ←

Area A Aug 18/81 PIC

LINE 142E



42005 - NS P.F. + MARSH

44005 - Creek

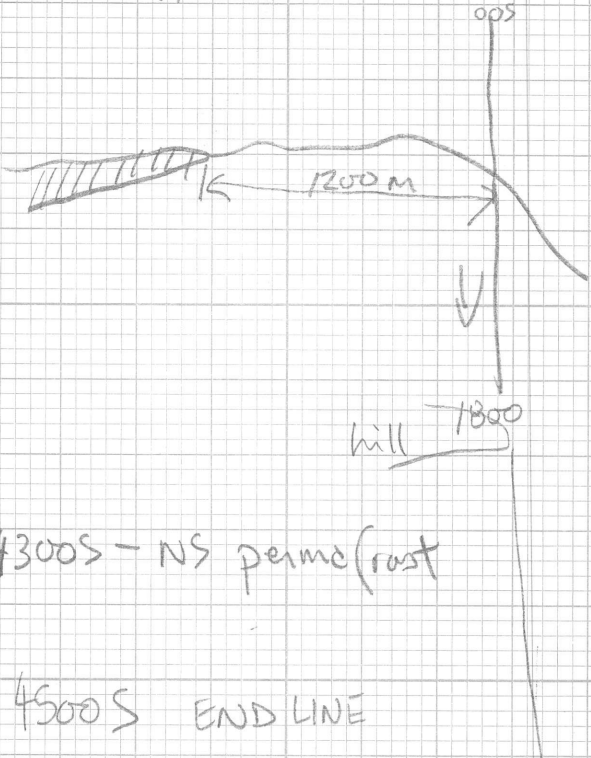
46005 - NS Swamp

47005 - END LINE

Area A

PK

LINE 146E



Area A

LINE 143.5E PIC



5005 NS Permaf.

10005 NS - Middle  
of lake

20005 - NS - Perma

23005 - NS {organics

23005 NS {only

42005 NS {org. only

4500 NS - Swamp

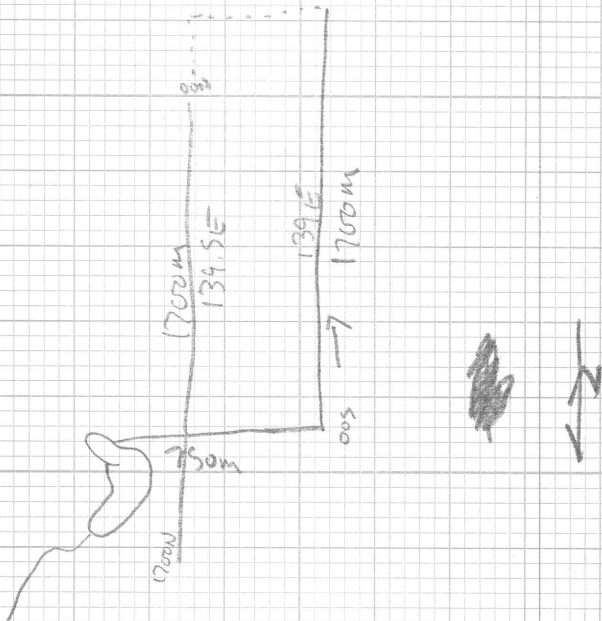
4700 " "

5000

END 5000

Area A PK

LINE 139 E 00S - 1700S  
139.5E 1600N - 1700N

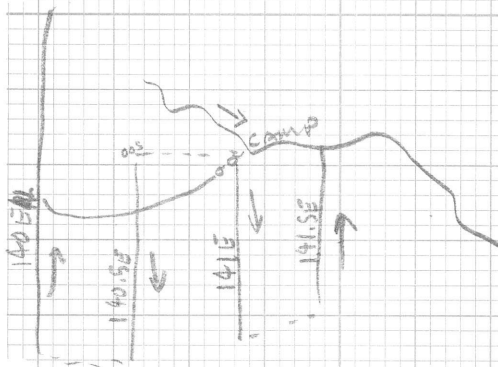


139.5E

- 1600N - NS - Swamp
- 1400N - NS - organics, P.F.
- 1600N → NS - organics - Swamp

Area A P.K.

|              |        |              |
|--------------|--------|--------------|
| <u>LINES</u> | 140.5E | 100S - 1200S |
|              | 14DE   | 00N - 2000N  |
|              | 141E   | 00S - 1000S  |
|              | 141.5E | 00N - 900N   |

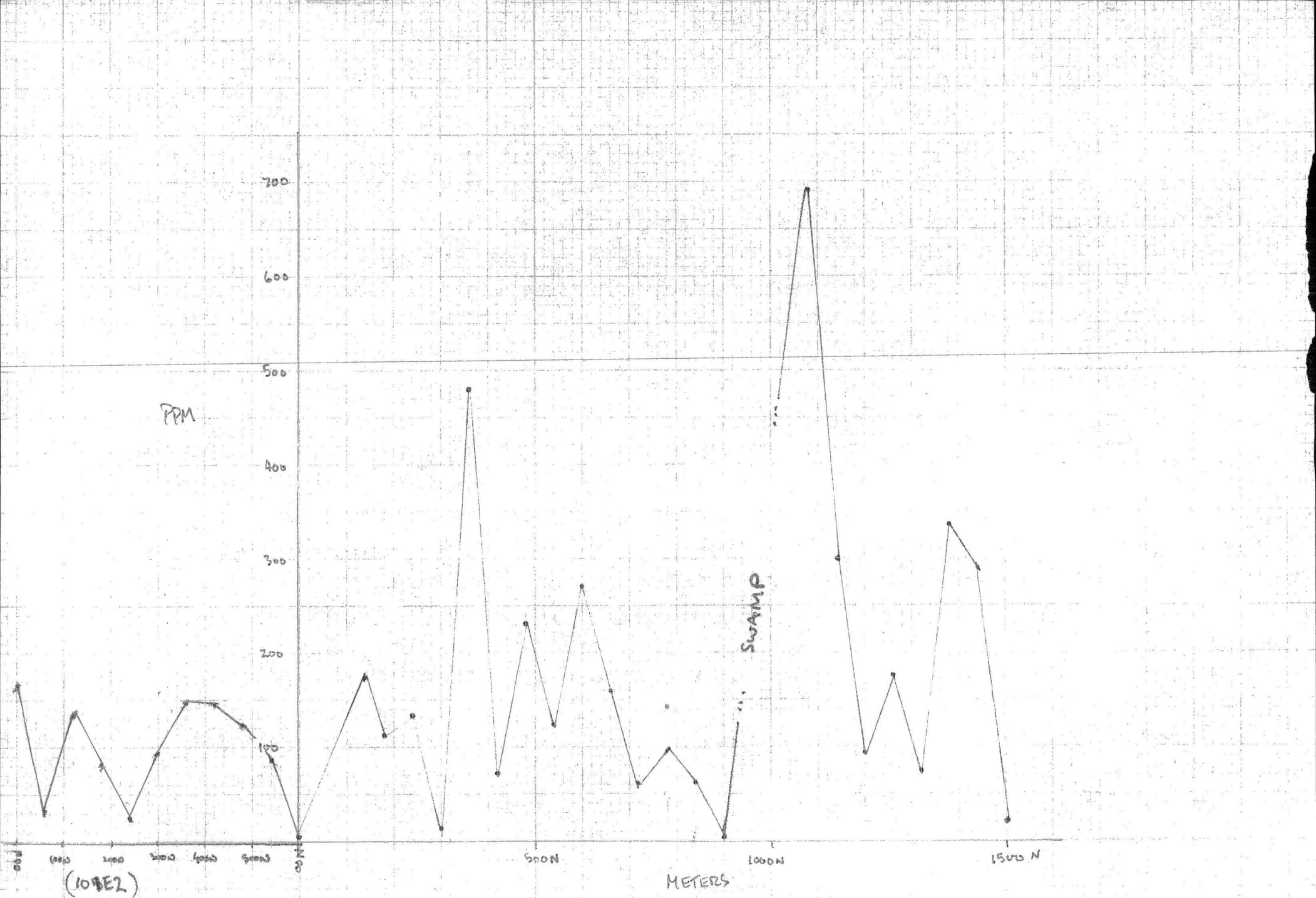


OUTCROP AT 140E 525N

→ small knoll, bare and crowned  
with aspen and scattered  
firs. Soil on surface  
and bedrock pokes thru  
over

LINE 140E

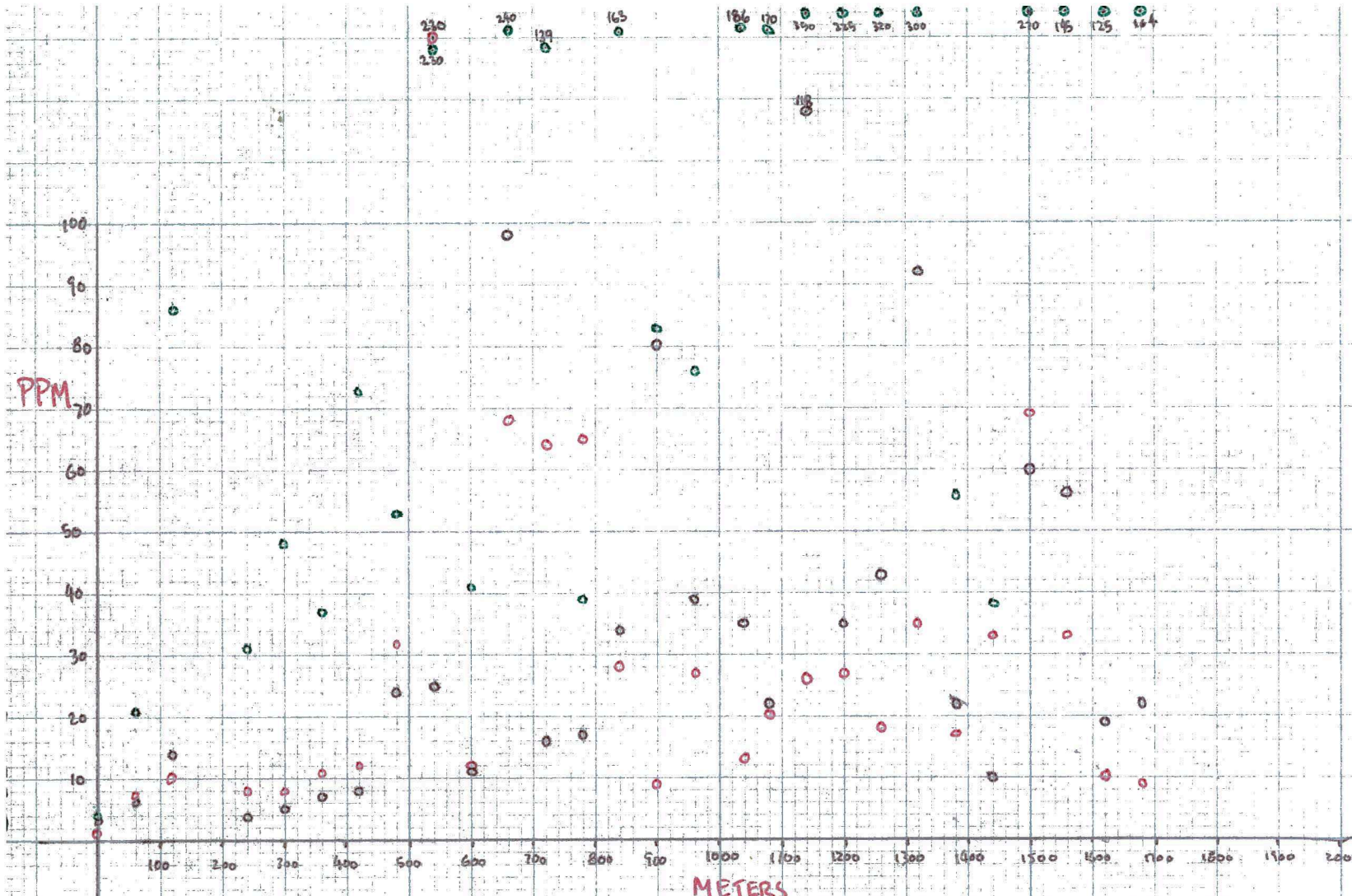
1200N - NS Swamp



line 101 E Zn PPM vs. DISTANCE

SD#2 - 150  
SD#3 - 400

Pb and Co levels of background variety, showing no anomalies



AREA A - ROSS RIVER SECTION

LINE 103 E

- Cu -  
 - Pb -  
 - Zn -



# AREA A LINES

dec 81 K

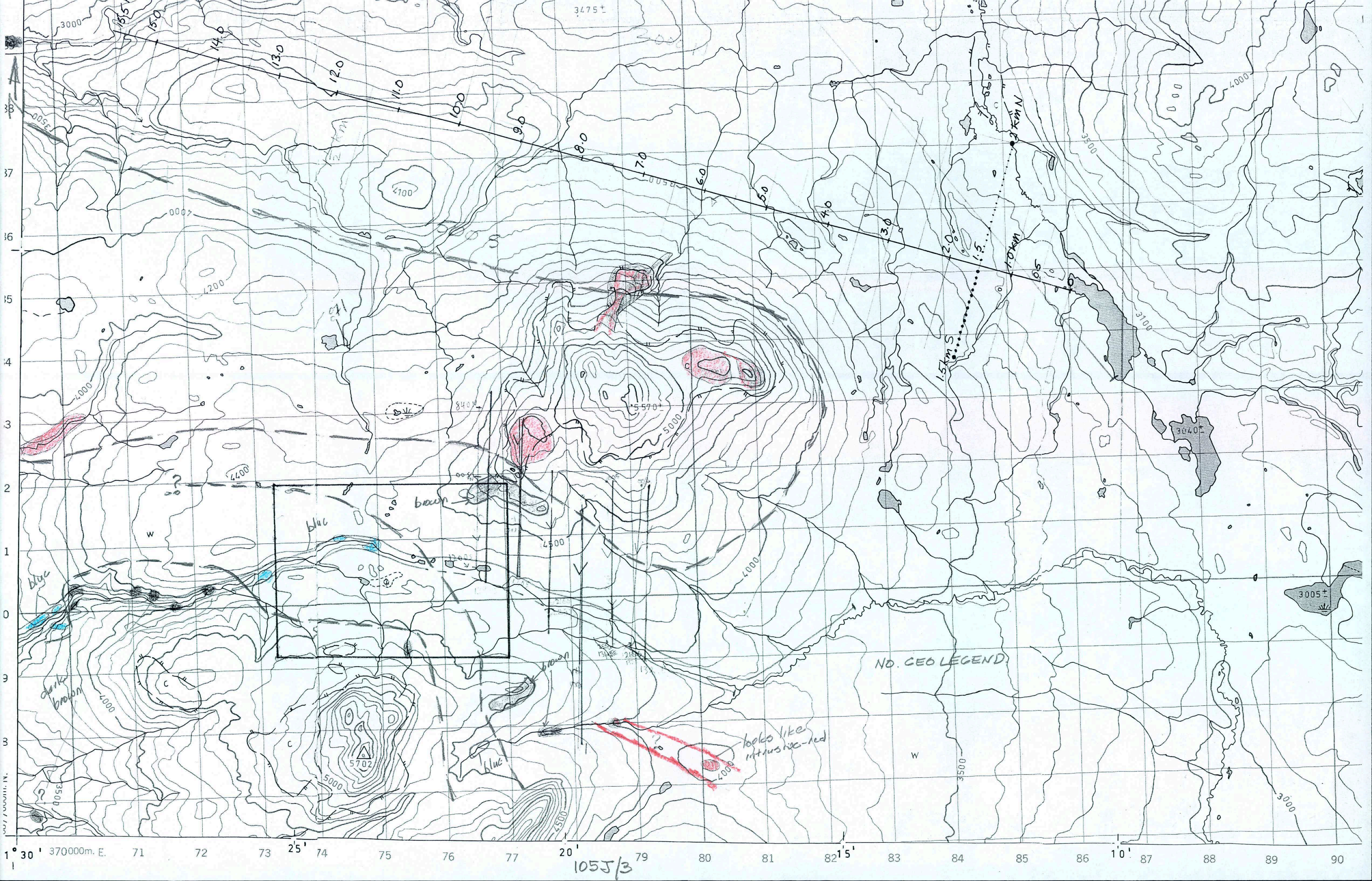
|                     |             |       |                     |              |       |                     |              |       |
|---------------------|-------------|-------|---------------------|--------------|-------|---------------------|--------------|-------|
| 100E                | 00N - 1140N | 1380m | 123.5E              | 00N - 1400N  | 1600m | 137E                | 00S - 1600S  | 1600m |
| 100E <sub>2</sub>   | 00N - 240N  |       |                     | 60S - 120S   |       | 137E <sub>2</sub>   | 00S - 4700S  |       |
| 100.5E              | 00S - 1320S | 1680m | 124.0E              | 00S - 1150S  | 1700m | 138.5E <sub>2</sub> | 00N - 1200N  | 9600m |
| 100.5E <sub>2</sub> | 00S - 360S  |       |                     | 60N - 550N   |       | 138.5E              | 00N - 1100N  |       |
| 101E                | 00N - 1500N | 2040m | 124.5E              | 00N - 1000N  | 1000m | 100S - 2200S        |              |       |
| 101E <sub>2</sub>   | 00N - 540N  |       | 125.0E              | 00S - 1150S  | 1200m | 137.5E              | 00N - 1500N  |       |
| 101.5E              | 00S - 2160S | 2160m | 125.5E              | 00N - 410N   | 2000m | 100S - 3500S        |              | 7700m |
| 102E                | 60S - 2400S | 2400m |                     | 120S - 1620S |       | 135.5E*             | 00N - 2500N  |       |
| 102.5E              | 00N - 1560N | 1600m | 126.0E              | 00S - 600S   | 1600m | 137.5E <sub>2</sub> | 00S - 1400S  | 7500m |
| 103E                | 00S - 1680S | 1700m |                     | 60N - 960N   |       | 137.5E <sub>3</sub> | 100S - 6000S |       |
| 103.5E              | 00N - 1980N | 2000m | 129.5E              | 60N - 840N   | 1900m | 138E <sub>3</sub>   | 00N - 1300N  | 1300m |
| 104E                | 00S - 1380S | 1400m |                     | 00S - 1200S  |       | 138E <sub>4</sub>   | 00S - 1800S  | 1800m |
| 104.5E              | 00N - 2100N | 2100m | 130E                | 00N - 2400N  | 2400m | 138E <sub>5</sub>   | 00S - 2000S  | 2000m |
| 105E                | 00S - 1920S | 2000m | 130E <sub>2</sub>   | 00N - 1800N  | 1800m | 138.5E <sub>4</sub> | 00N - 1500N  | 1500m |
| 105.5E              | 00N - 1380N | 1400m | 130.5E              | 00S - 2280S  | 2300m | 138.5E <sub>5</sub> | 00N - 2000N  | 2000m |
| 106E                | 00S - 1620S | 1700m | 130.5E <sub>2</sub> | 00S - 1600S  | 1600m | 139E                | 00S - 1700S  | 1700m |
| 106.5E              | 60N - 1800N | 1800m | 131E                | 00S - 3780S  | 3800m | 139E <sub>2</sub>   | 00S - 2000S  | 2000m |
| 107E                | 60N - 1140N | 1600m | 131E <sub>2</sub>   | 00S - 2200S  | 2200m | 139.5E              | 00N - 1700N  | 1700m |
|                     | 00S - 540S  |       | 131.5E              | 00S - 2580S  | 2600m | 139.5E <sub>2</sub> | 00N - 2000N  | 2000m |
| 107.5E              | 00S - 1440S | 1500m | 131.5E <sub>2</sub> | 00N - 2300N  | 2300m | 140E                | 00N - 2000N  | 2000m |
| 113.5E              | 00S - 1440S | 1500m | 132E                | 00S - 2660S  | 2700m | 140E <sub>2</sub>   | 00N - 1200N  | 1200m |
| 114.0E              | 00N - 1500N | 1500m | 132E <sub>2</sub>   | 00N - 2200N  | 2200m | 140.5E              | 100S - 1200S | 5500m |
| 114.5E              | 00N - 1800N | 1800m | 132.5E <sub>2</sub> | 00S - 2100S  | 2100S |                     | 00N - 4300N  |       |
| 115.5E              | 60N - 1440N | 1500m | 133E <sub>2</sub>   | 400N - 2800N | 1800m | 141E                | 00S - 1000S  | 1000m |
| 116.0E              | 00S - 1200S | 1200m | 133.5E <sub>2</sub> | 500N - 1900N | 1400m | 141.5E              | 00N - 800N   | 800m  |
| 118.0E              | 60S - 2040S | 2180m | 134E                | 00N - 1100N  | 1800m | 141.5E              | 00S - 3600S  | 3600m |
|                     | 00N - 1140N |       |                     | 100S - 700S  |       | 142E                | 00S - 4700S  | 4700m |
| 118.5E              | 00S - 2700S | 2700m | 134.5E              | 00N - 1800N  | 1800m | 142.5E              | 00S - 4900S  | 4900m |
| 119.0E              | 00S - 1560S | 2700m | 135.0E              | 00N - 1800N  | 1800m | 143E                | 00N - 5000N  | 5000m |
|                     | 00N - 1090N |       | 135.5E              | 00S - 4100S  | 4100m | 143.5E              | 00S - 5000S  | 5000m |
| 119.5E              | 00N - 2400N | 2400m | 135.5E*             | SEE 137.5E   |       | 144E                | 00N - 5100N  | 5100m |
| 120E                | 00S - 1980S | 2000m | 136E                | 00S - 3900S  | 4000m | 144.5E              | 00S - 4800S  | 4800m |
| 120.5E              | 00N - 1980N | 2000m | 136E                | 00N - 1500N  | 1500m | 145E                | 00S - 4900S  | 4900m |
| 121E                | 00S - 1920S | 2000m | 136E <sub>2</sub>   | 00S - 5800S  | 5800m | 145.5E              | 00N - 3800N  | 3800m |
| 121.5E              | 00N - 1620N | 2040m | 136.5E              | 00S - 5300S  | 5300m | 146E                | 00S - 4500S  | 4500m |
|                     | 60S - 420S  |       | 136.5E <sub>2</sub> | 00N - 4400N  |       |                     |              |       |
| 122.0E              | 00S - 1600S | 1600m | 138E <sub>2</sub>   | 00S - 1800S  | 8400m |                     |              |       |
| 122.5E              | 00N - 1560N | 1600m | 138E                | 00N - 1400N  |       |                     |              |       |
| 123.0E              | 00S - 1600S | 1600m |                     | 00S - 800S   |       |                     |              |       |

# ANERD GRID

dec 81 K

|         |             |       |          |             |       |          |             |       |
|---------|-------------|-------|----------|-------------|-------|----------|-------------|-------|
| 8500 w  | 00S - 2160S | 4400m | 11000 w  | 00S - 2200S | 2800m | 15000 w  | 00N - 1800N | 1800m |
|         | 60N - 2160N |       |          | 00N - 2520N |       | 15.500 w | 00S - 1560S | 1600m |
| 9000 w  | 00S - 2100S | 3900m | 11500 w  | 60S - 1620S | 3500m |          |             |       |
|         | 00N - 1740N |       |          | 00N - 1740N |       |          |             |       |
| 9500 w  | 00S - 1920S | 4200m | 12000 w  | 00S - 1980S | 2000m |          |             |       |
|         | 60N - 2160N |       | 12500 w  | 00N - 2280N | 2300m |          |             |       |
| 10000 w | 00S - 1980S | 4100m | 13000 w  | 00S - 1800S | 1800m |          |             |       |
|         | 00N - 2100N |       | 13.500 w | 60N - 1920N | 2000m |          |             |       |
| 10500 w | 00S - 2280S | 4600m | 14.000 w | 00N - 2100N | 2100m |          |             |       |
|         | 00N - 2220N |       | 14.500 w | 00S - 1980S | 2000m |          |             |       |

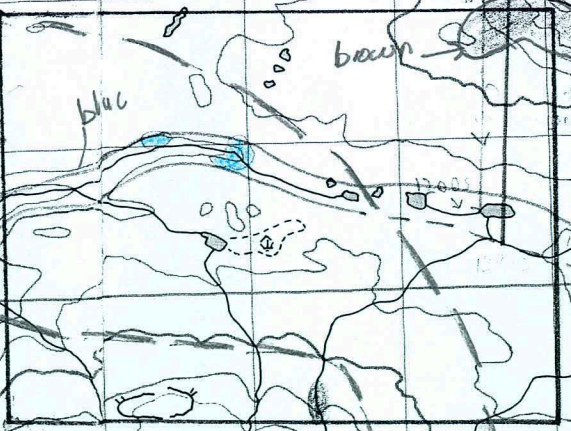
In all,  $2.77 \times 10^5$  m  
or 277 Km  
or 173.1 m, of line.



105J/3

NO. GEO LEGEND

looks like  
intrusive - red



dark brown

blue

blue

blue

blue

blue

blue

blue

blue

blue

blue

blue

blue

blue

blue

blue

blue

blue

blue

blue

blue

blue

29/6/81 K A125E R A125.5E W A119.5E  
 A124.5E A A126E A120E  
 A12AE ~~A121E~~

30/6/81 K 123.5E R 122.5E W 120.5E

123E 122E 121E  
 L Possible 121.5E P.M J

1/7/81 R → 121.5E ← W

MOVE

2/7/81 K + W R  
 11,000 w line } 9.5 km 11,500 line ≈ 2.5 km.  
 10,500 w line }

Grid problems - spent morning messing with maps plotting grid on, sampled 11,500 to 2520N and 4 hours trying to get into, or even find the grid. We were unsuccessful!!

3/7/81 K 13,000 + 13,500 lines 14 + 14,500 15 + 15,500

4/7/81 K 8.5 + 9 lines R 8.5 + 9 lines W 12.5 + 12,000 lines  
 00N to 2200 00S to 2000 00N to 2000

5/7/81 K R W 11,500 w 00N TO 2200N  
 9,500 w 00S TO 1800S 9,500 w 00N TO 2200N 10,500 w 00S TO 2200S  
 10,000 w 00N TO 2100N 10,000 w 00S TO 2200S

6/7/81 K 11,500 w 00S to 2600S R 10,500 w 00S TO 2300S W → 11,000 w 00S-2500S

7/7/81 CAMP MOVE