

Zn

AREA A		<u>b</u>	<u>+1SD</u>	<u>+2SD</u>	<u>+3SD</u>
	129-146E	79	140	220	410
	100-126	70	140	250	510
	ANERD	58	120	190	390
	ALL	84	148	230	410

x

USE	FOR ALL	<u>Zn b</u>	<u>+1SD</u>	<u>+2SD</u>	<u>+3SD</u>
		80	140	220	400

AREA A Z_n

dec/81/9c

AREA A Z_n lines 100E - 126E

485 SAMPLES

PPM	FREQ	FREQ%	Cum%
380-399	2	.41	.41
360-379	1	.21	.62
340-359	2	.41	1.03
320-339	3	.62	1.65
300-319	1	.21	1.86
280-299	3	.62	2.48
260-279	2	.41	2.89
240-259	2	.41	3.30
220-239	9	1.86	5.16
200-219	12	2.47	7.63
180-199	10	2.06	9.69
160-179	19	3.92	13.61
140-159	20	4.12	17.73
120-139	30	6.18	23.91
100-119	27	5.58	29.49
80-99	47	9.69	39.18
60-79	68	14.02	53.20
40-59	70	14.43	67.63
20-39	62	12.78	80.41
0-19	95	19.59	100.00

SD+1 - 158 ppm.

SD+2 - 260 ppm.

SD+3 - 440 ppm.

AREA A Z_n lines 129E - 146E

825 SAMPLES

PPM	FREQ	FREQ%	Cum%
380-399	—	—	—
360-379	2	.24	.24
340-359	1	.12	.36
320-339	1	.12	.48
300-319	1	.12	.60
280-299	1	.12	.72
260-279	5	.60	1.32
240-259	3	.36	1.68
220-239	7	.85	2.53
200-219	7	.85	3.38
180-199	9	1.09	4.47
160-179	43	5.21	9.68
140-159	71	8.61	18.29
120-139	144	17.45	35.74
100-119	149	18.06	53.80
80-99	138	16.72	70.52
60-79	110	13.33	83.85
40-59	59	7.15	91.00
20-39	53	6.42	97.42
0-19	21	2.55	99.97

SD+1 - 150 ppm.

SD+2 - 220 ppm.

SD+3 - 430 ppm.

AREA A2: ANERD GRID

312 SAMPLES

PPM	FREQ	FREQ%	Cum%
380-399			
360-379			
340-359	1		
320-339			
300-319			
280-299			
260-279			
240-259	1	.32	.32
220-239	3	.96	1.28
200-219	1	.32	1.60
180-199	2	.64	2.24
160-179	3	.96	3.20
140-159	5	1.60	4.80
120-139	18	5.77	10.57
100-119	32	10.26	20.83
80-99	37	11.86	32.69
60-79	61	19.55	52.24
40-59	62	19.87	72.11
20-39	51	16.35	88.46
0-19	36	11.54	99.91

SD+1 125 ppm.

SD+2 190 ppm.

SD+3 280 ppm.

AREA A INCLUSIVE - Z_n -

1623 SAMPLES

PPM	FREQ	FREQ%	Cum%
380-399	2	.12	.12
360-379	3	.18	.30
340-359	4	.25	.55
320-339	4	.25	.80
300-319	2	.12	.92
280-299	4	.25	1.17
260-279	7	.43	1.60
240-259	6	.37	1.97
220-239	19	1.17	3.14
200-219	20	1.23	4.37
180-199	21	1.29	5.66
160-179	65	4.00	9.66
140-159	96	5.91	15.57
120-139	192	11.82	27.39
100-119	208	12.82	40.21
80-99	222	13.68	53.89
60-79	239	14.73	68.62
40-59	191	11.69	80.31
20-39	166	10.23	90.54
0-19	152	9.37	99.91

SD+1 - 150 ppm.

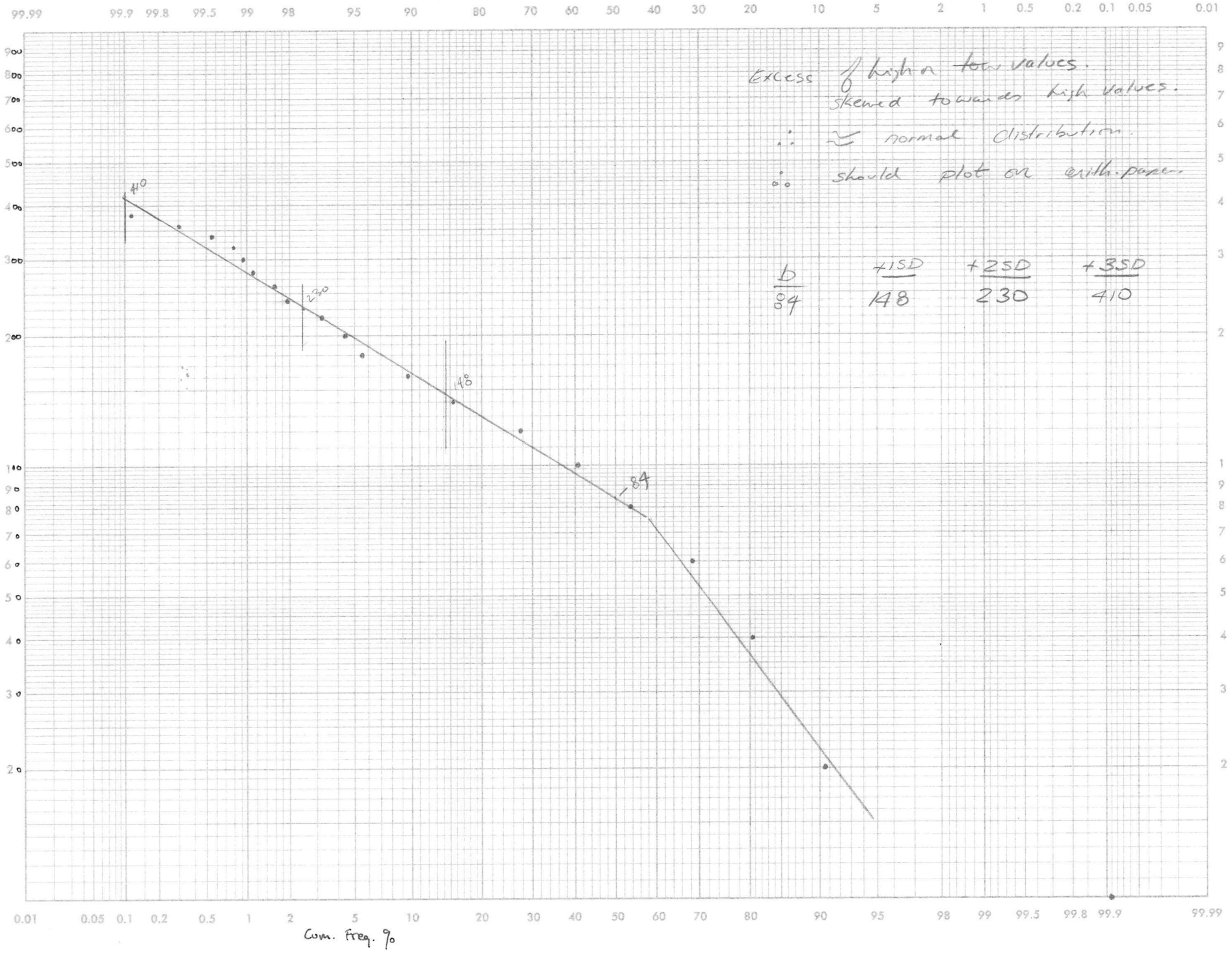
SD+2 - 230 ppm.

SD+3 - 385 ppm.

AREA A ZN. com. freq. % log graph
 Inclusive lines 100E - 146E, Amerd grid.



dec/81 K





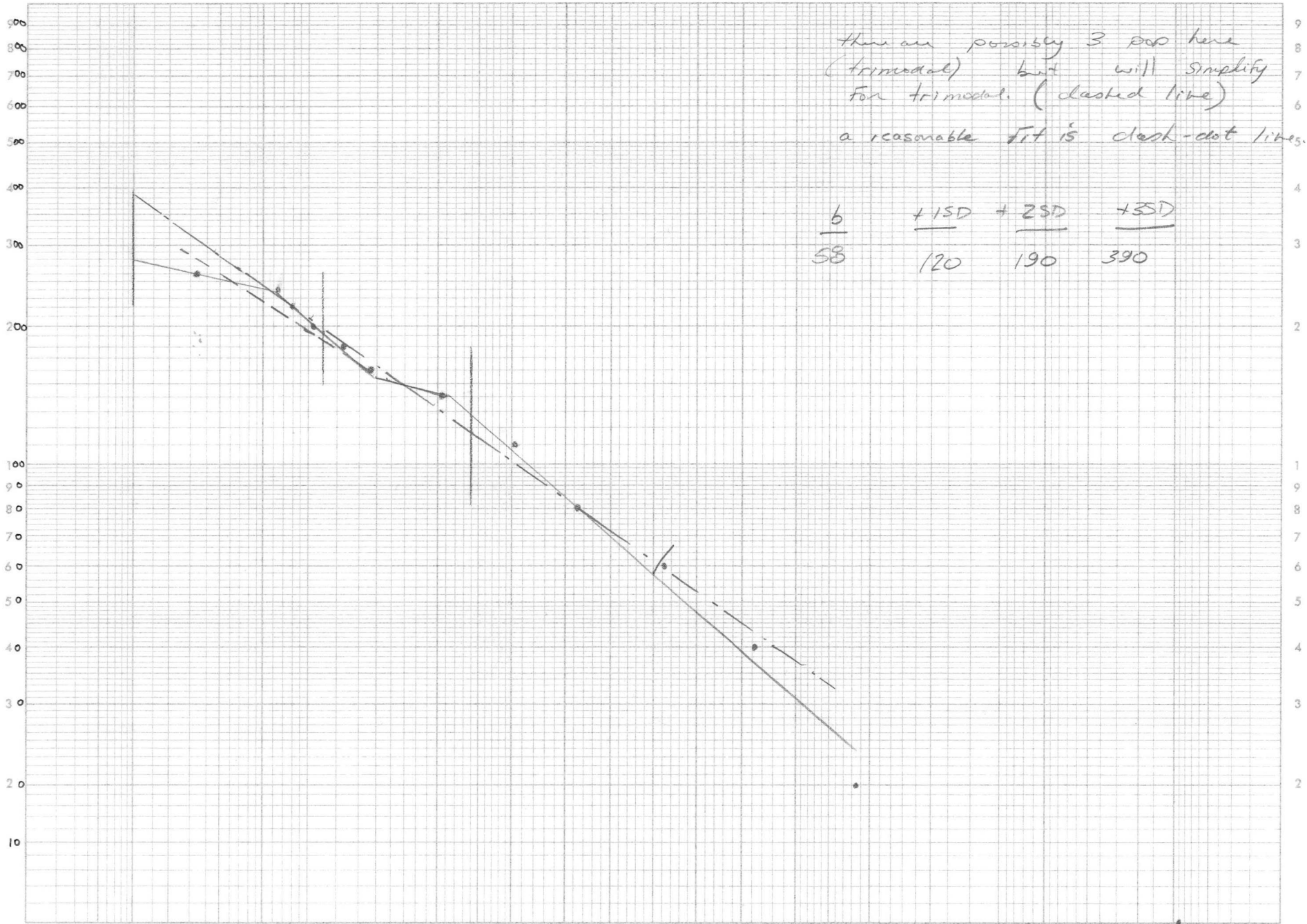
ANERD GRID Zn

Cum. FREQ. % Log graph

dec/81 98

99.99 99.9 99.8 99.5 99 98 95 90 80 70 60 50 40 30 20 10 5 2 1 0.5 0.2 0.1 0.05 0.01

P.P.M



there are possibly 3 pop here
(trimodal) but will simplify
for trimodal. (dashed line)
a reasonable fit is dash-dot line.

<u>b</u>	<u>+1SD</u>	<u>+2SD</u>	<u>+3SD</u>
58	120	190	390

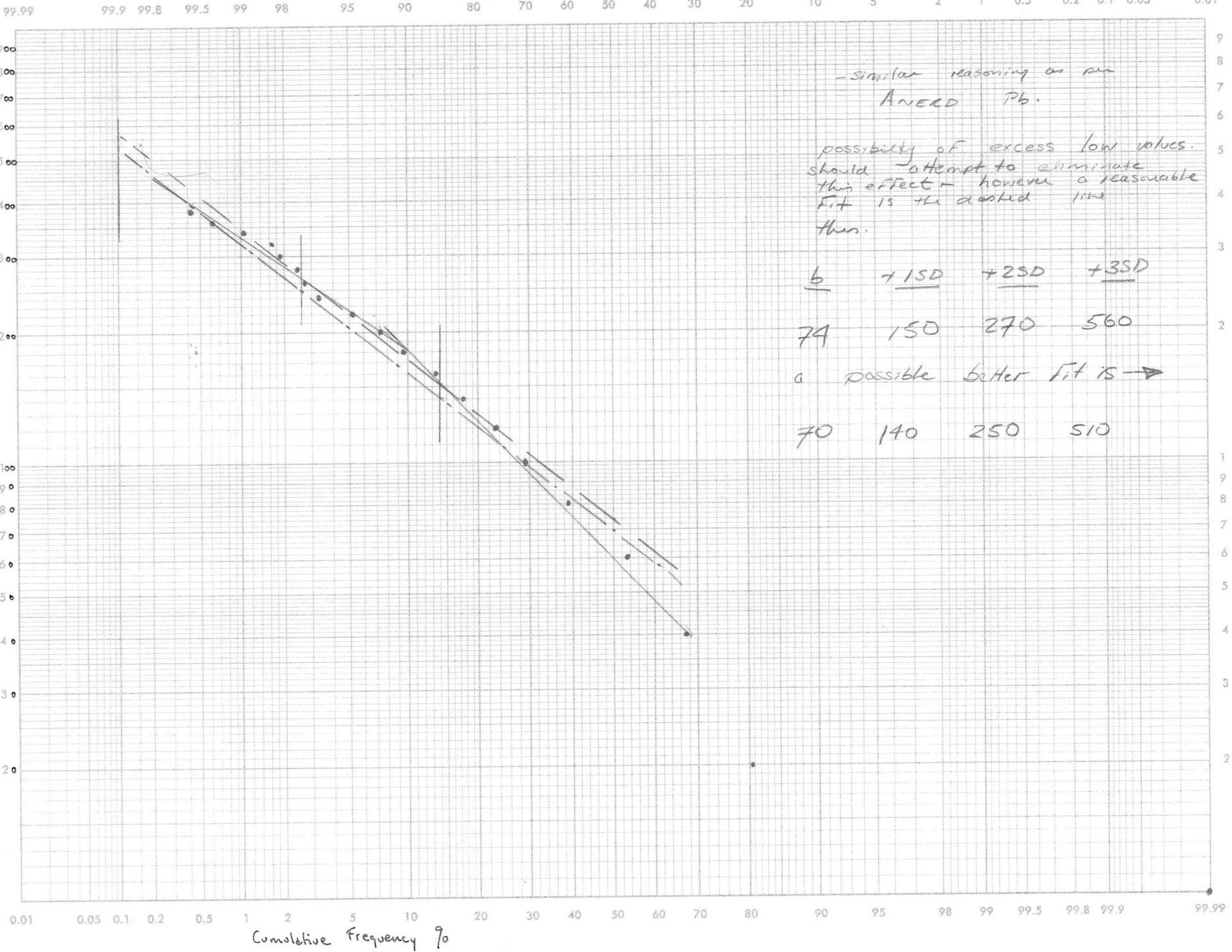
0.01 0.05 0.1 0.2 0.5 1 2 5 10 20 30 40 50 60 70 80 90 95 98 99 99.5 99.8 99.9 99.99

Cum. FREQ. %



AREA A - Z_n cum. freq % log
lines 100E - 126E

decl: 9k



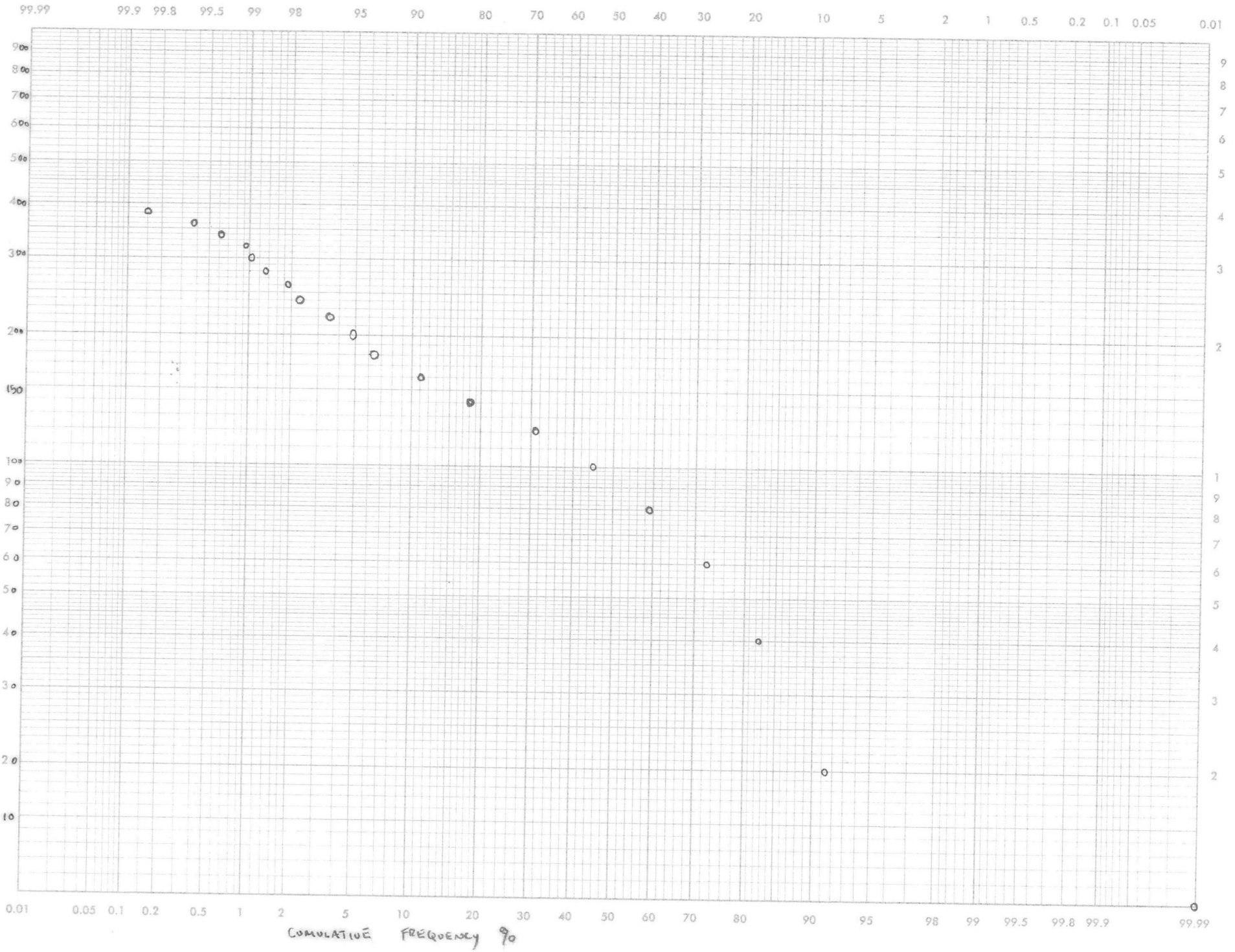
P.P.M.

Cumulative Frequency %

AREA A Zn CUMULATIVE FREQUENCY % graph
EXCLUDING ANEPD GRID.

CLEARPRINT CHARTS

da/s) *



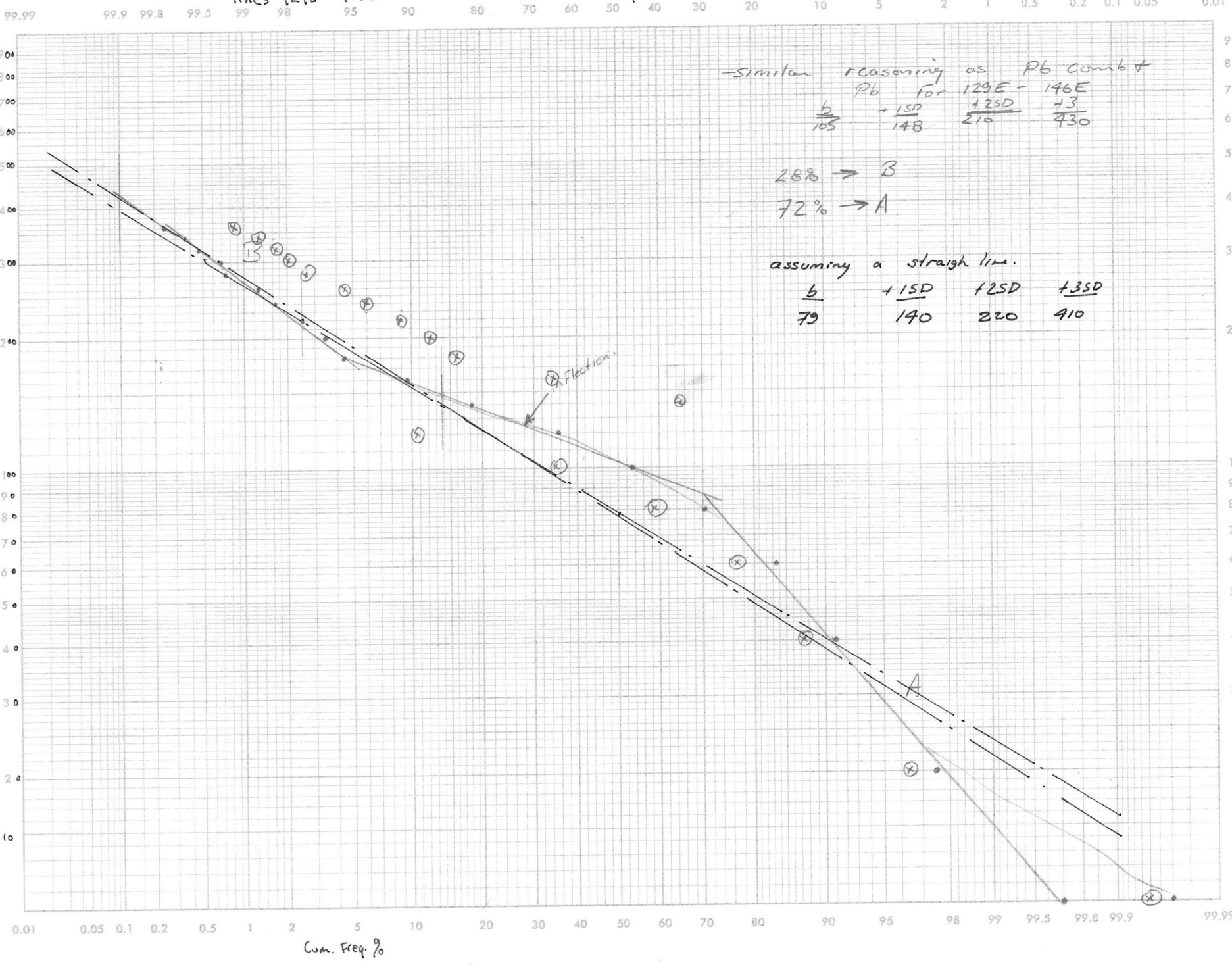
PPM

CUMULATIVE FREQUENCY %



AREA A ZN Com. FREQ. % log Graph.
lines 129E - 146E

dec/01 ←



P.P.M.

Com. Freq. %

AREA A Z_n

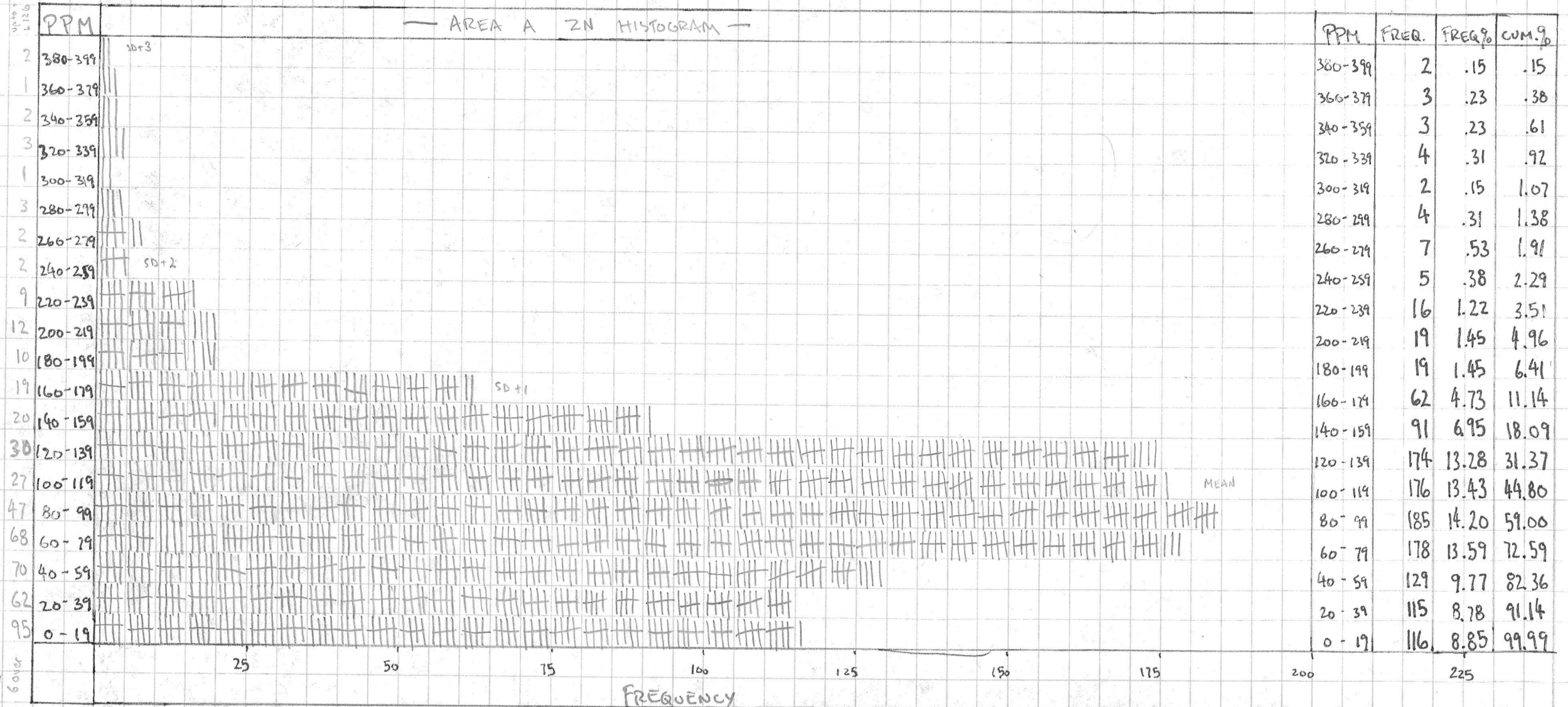
(excluding Aresd Grid) dec/81 GK

OVER 400 - 9 (.68% of 1319)

TOTAL 1310

up to including L126 E

— AREA A Z_n HISTOGRAM —



ANERD GRID Zn

dec 81 / 9

Total samples 312.

PPM	FREQ.	FREQ %	Com. %
380-399			
360-379			
340-359	1		
320-339			
300-319			
280-299			
260-279			
240-259	1	.32	.32
220-239	3	.96	1.28
200-219	1	.32	1.60
180-199	2	.64	2.24
160-179	3	.96	3.20
140-159	5	1.60	4.80
120-139	18	5.77	10.57
100-119	32	10.26	20.83
80-99	37	11.86	32.69
60-79	61	19.55	52.24
40-59	62	19.87	72.11
20-39	51	16.35	88.46
0-19	36	11.54	99.91

AREA A Zn

dec/81/9k

AREA A Zn. lines 100E - 126E
485 SAMPLES

PPM	FREQ	FREQ%	Com%
380-399	2	.41	.41
360-379	1	.21	.62
340-359	2	.41	1.03
320-339	3	.62	1.65
300-319	1	.21	1.86
280-299	3	.62	2.48
260-279	2	.41	2.89
240-259	2	.41	3.30
220-239	9	1.86	5.16
200-219	12	2.47	7.63
180-199	10	2.06	9.69
160-179	19	3.92	13.61
140-159	20	4.12	17.73
120-139	30	6.18	23.91
100-119	27	5.58	29.49
80-99	47	9.69	39.18
60-79	68	14.02	53.20
40-59	70	14.43	67.63
20-39	62	12.78	80.41
0-19	95	19.59	100.00

SD+1 - 158 ppm.
SD+2 - 260 ppm.
SD+3 - 440 ppm.

AREA A Zn. lines 129E - 146E
825 SAMPLES

PPM	FREQ	FREQ%	Com%
380-399	—	—	—
360-379	2	.24	.24
340-359	1	.12	.36
320-339	1	.12	.48
300-319	1	.12	.60
280-299	1	.12	.72
260-279	5	.60	1.32
240-259	3	.36	1.68
220-239	7	.85	2.53
200-219	7	.85	3.38
180-199	9	1.09	4.47
160-179	43	5.21	9.68
140-159	71	8.61	18.29
120-139	144	17.45	35.74
100-119	149	18.06	53.80
80-99	138	16.72	70.52
60-79	110	13.33	83.85
40-59	59	7.15	91.00
20-39	53	6.42	97.42
0-19	21	2.55	99.97

SD+1 - 150 ppm.
SD+2 - 220 ppm.
SD+3 - 430 ppm.

AREA A Zn. ANERD GRID
318 SAMPLES

PPM	FREQ	FREQ%	Com%
380-399			
360-379			
340-359	1		
320-339			
300-319			
280-299			
260-279			
240-259	1	.32	.32
220-239	3	.96	1.28
200-219	1	.32	1.60
180-199	2	.64	2.24
160-179	3	.96	3.20
140-159	5	1.60	4.80
120-139	18	5.77	10.57
100-119	32	10.26	20.83
80-99	37	11.86	32.69
60-79	61	19.55	52.24
40-59	62	19.87	72.11
20-39	51	16.35	88.46
0-19	36	11.54	99.91

SD+1 125 ppm.
SD+2 190 ppm.
SD+3 280 ppm.

AREA A INCLUSIVE - ZN -
1623 SAMPLES

PPM	FREQ	FREQ%	Com%
380-399	2	.12	.12
360-379	3	.18	.30
340-359	4	.25	.55
320-339	4	.25	.80
300-319	2	.12	.92
280-299	4	.25	1.17
260-279	7	.43	1.60
240-259	6	.37	1.97
220-239	19	1.17	3.14
200-219	20	1.23	4.37
180-199	21	1.29	5.66
160-179	65	4.00	9.66
140-159	96	5.94	15.57
120-139	192	11.82	27.39
100-119	208	12.82	40.21
80-99	222	13.68	53.89
60-79	239	14.73	68.62
40-59	191	11.69	80.31
20-39	166	10.23	90.54
0-19	152	9.37	99.91

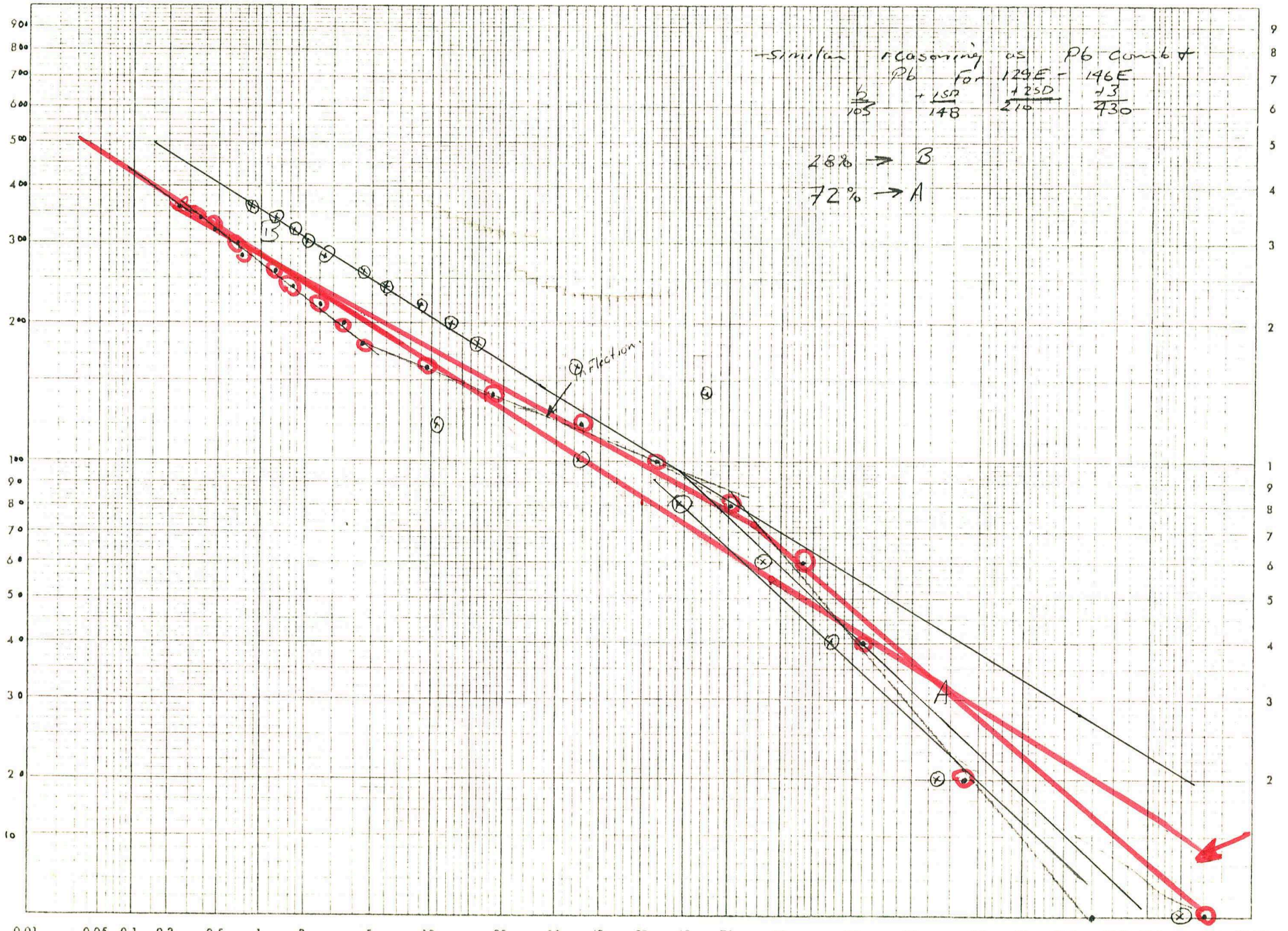
SD+1 - 150 ppm.
SD+2 - 230 ppm.
SD+3 - 385 ppm.

AREA A ZN Cum. FREQ. % log Graph.

lines 129E - 146E

dec/dl %

99.99 99.9 99.8 99.5 99 98 95 90 80 70 60 50 40 30 20 10 5 2 1 0.5 0.2 0.1 0.05 0.01



P.P.M.

Cum. Freq. %