

59

108
TRUS

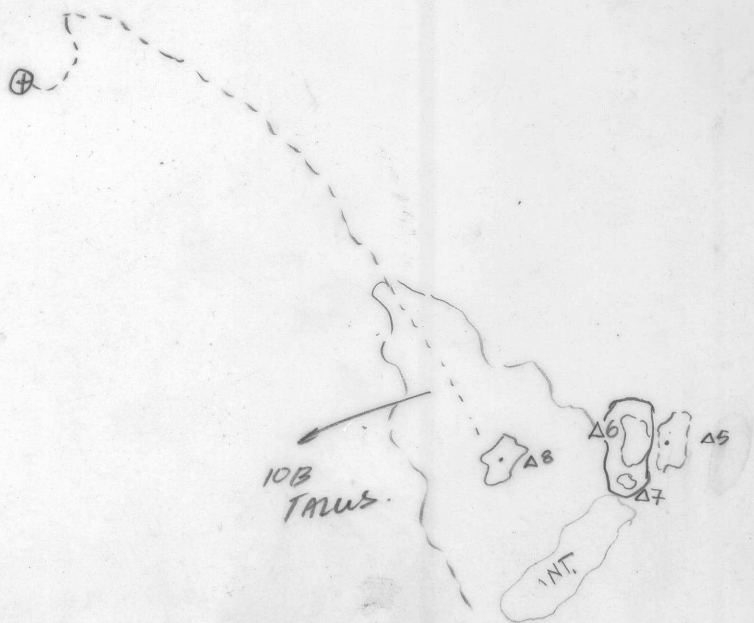
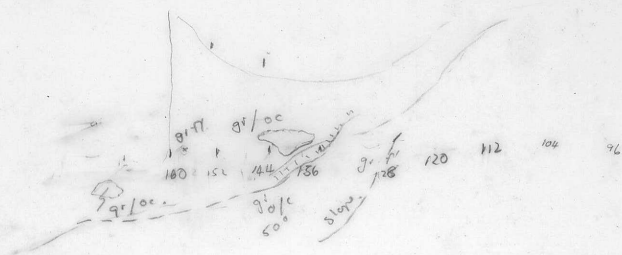
A6
A7
A8

INT

24 N 40 W
15 N 40 W
16 N 52 W

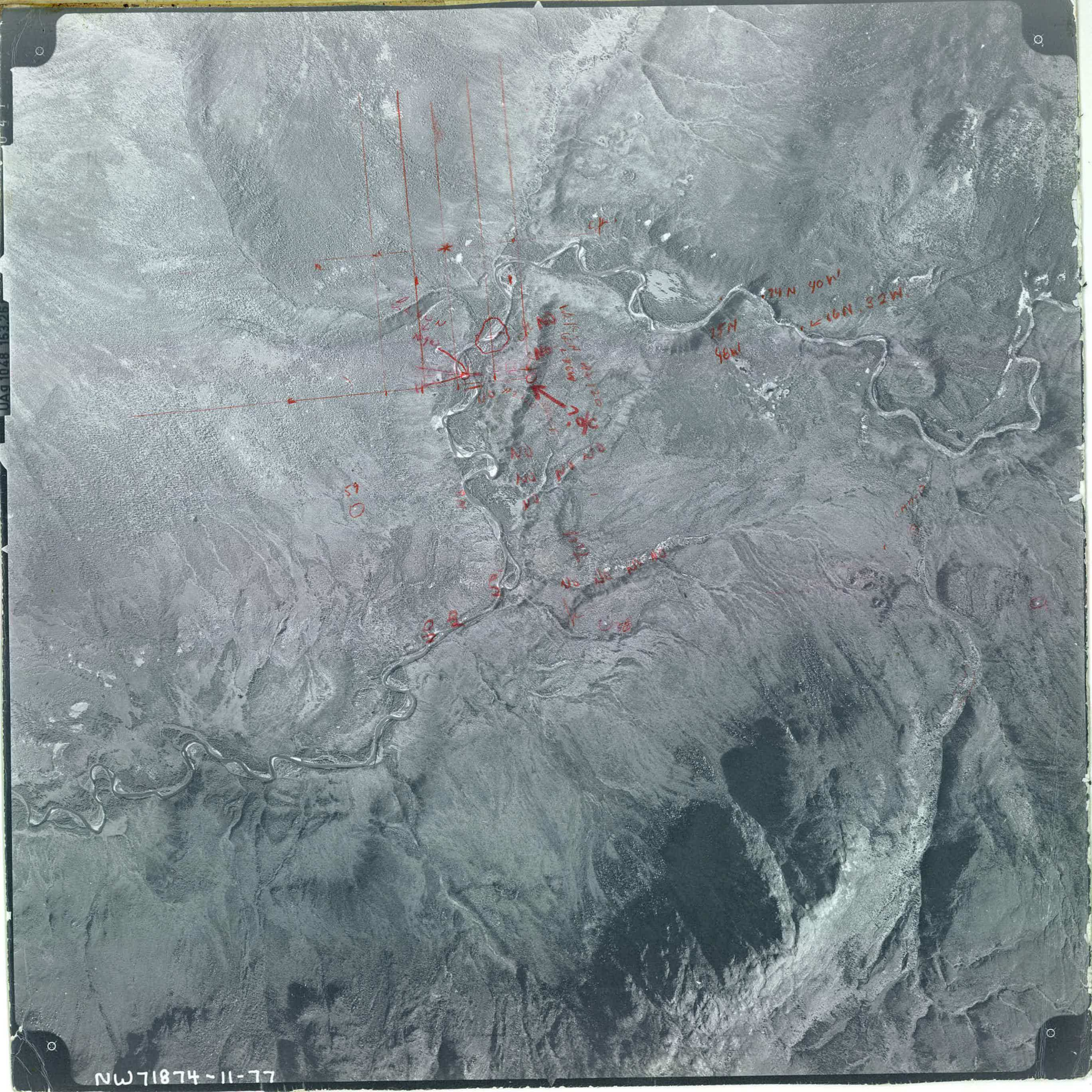
NW 71874 - 11-77

018769



018769

UAG 1028 15325



50

52

54

56

58

60

62

64

66

68

70

72

74

76

78

80

82

84

86

88

90

92

94

96

98

100

15N
90W

24N
40W

16N
30W

NW71874-11-77





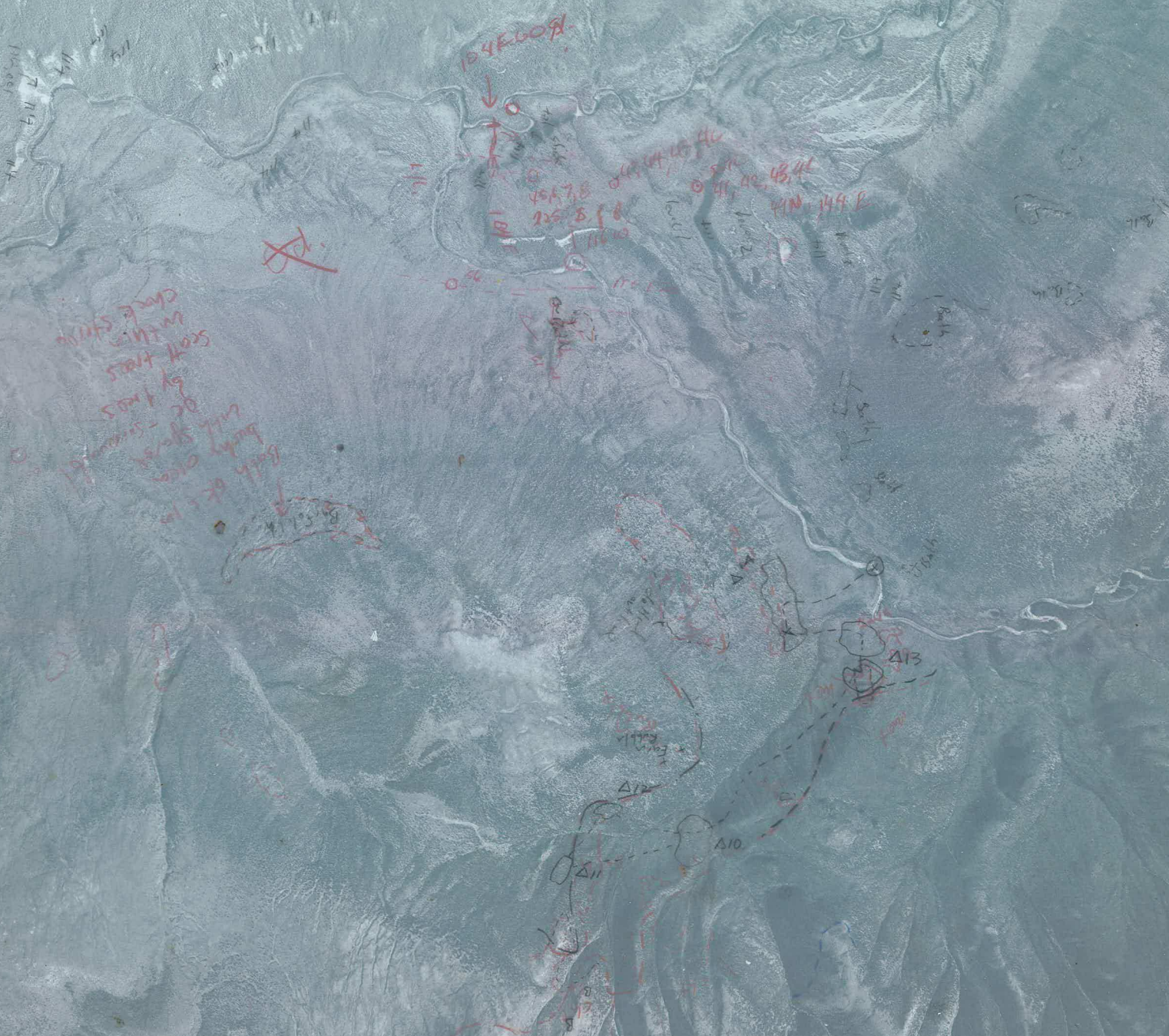
k.
O 50
1
Byh. 0-100 2000

South

ch.
O 50
North 0-100 2000

ch.
O 50
0-100 2000

NW 71874-11-79



Scott trees in this circle shown by lines of trees with ground level

Both of them

ROCKHOLE

457.8
25.8
1110

1111
1112
1113

1114
1115
1116

1117
1118
1119

1120
1121
1122

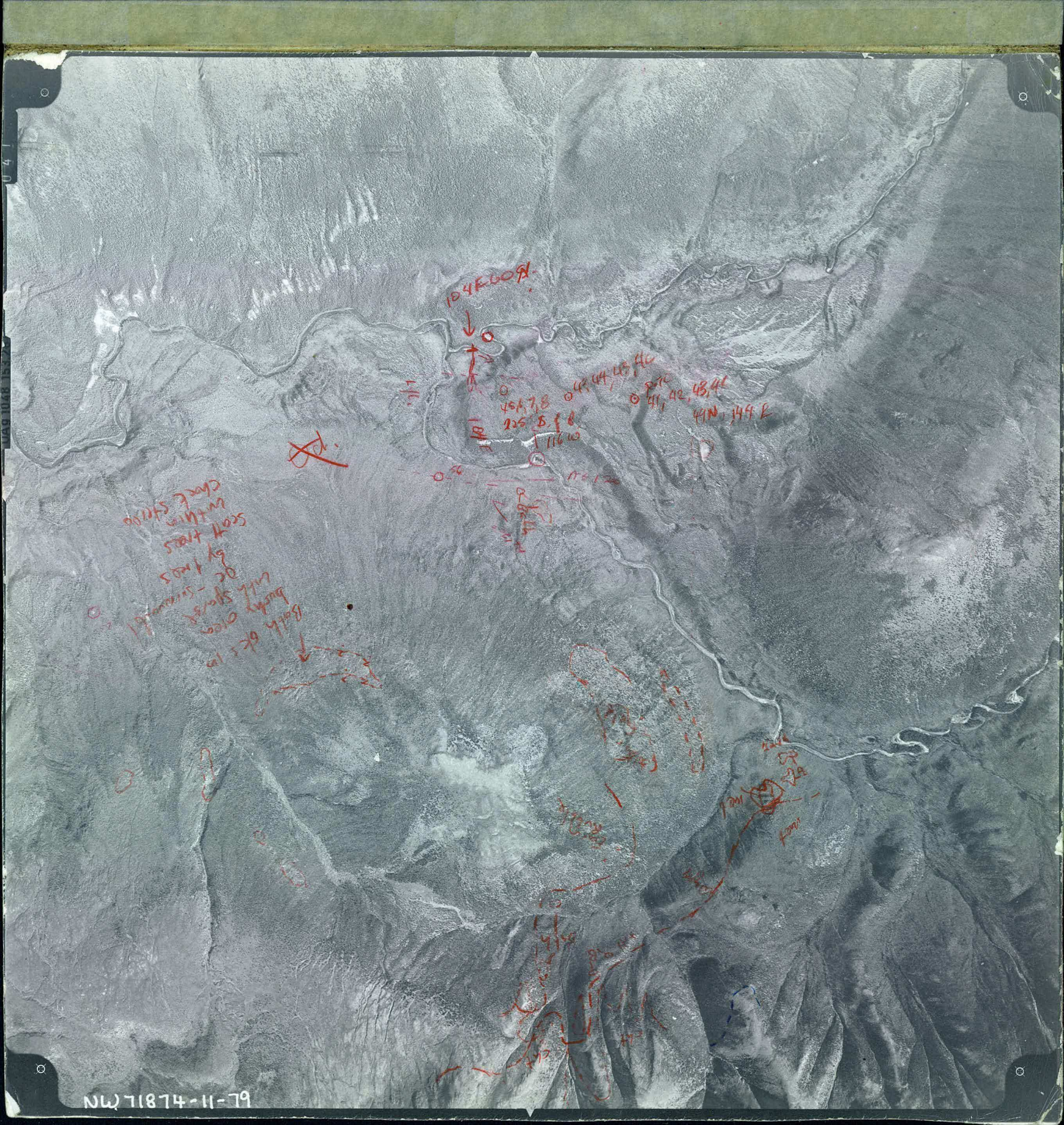
1123
1124
1125

Δ10

Δ11

Δ10

Δ13



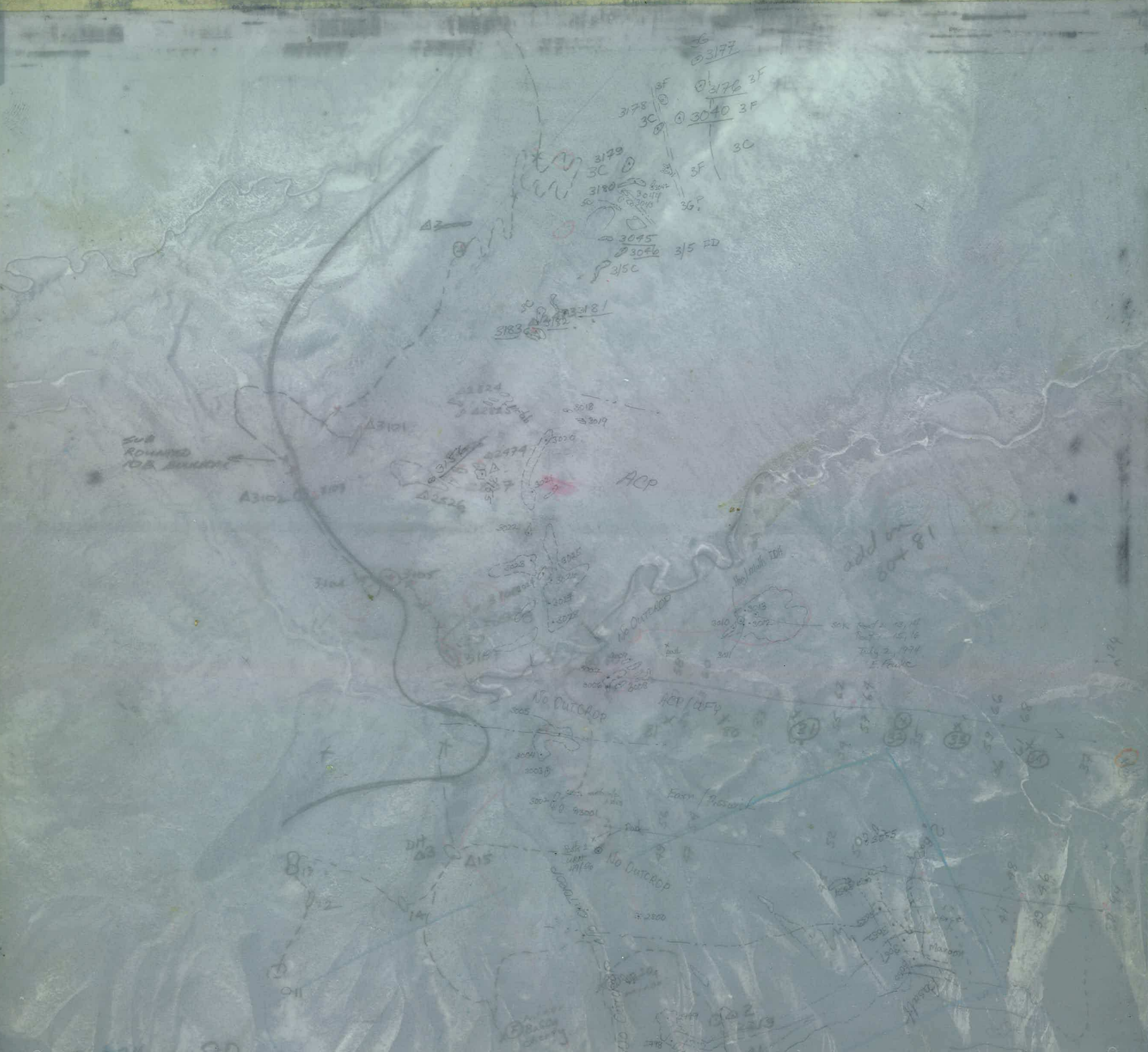
1045609

45, 7, 8
25, 5, 8
1160

41, 42, 43, 44
41, 42, 43, 44
41, 42, 43, 44

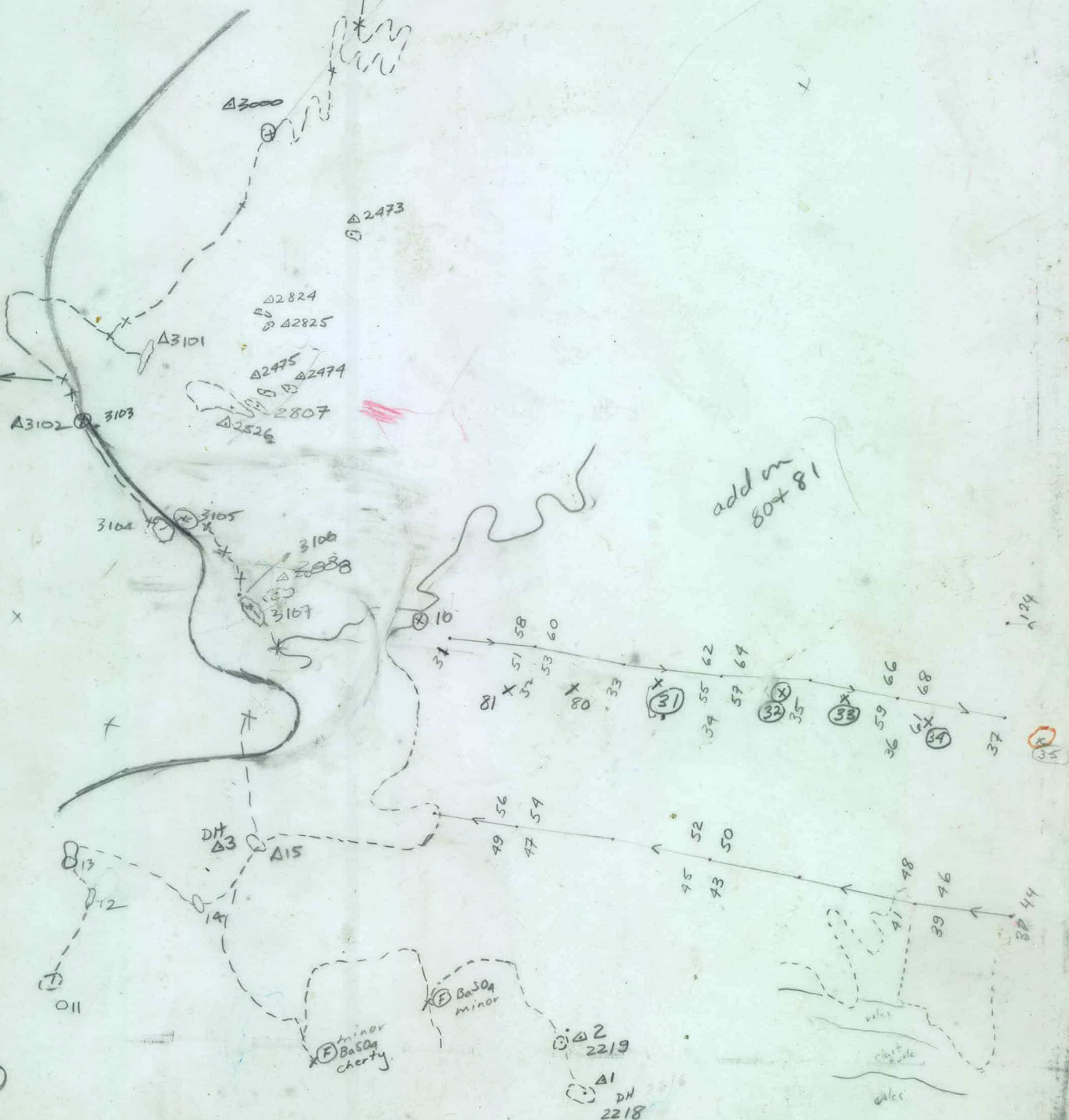
Scott trees within close strip
Bath pits in brushy area with sparse - scattered

Abella

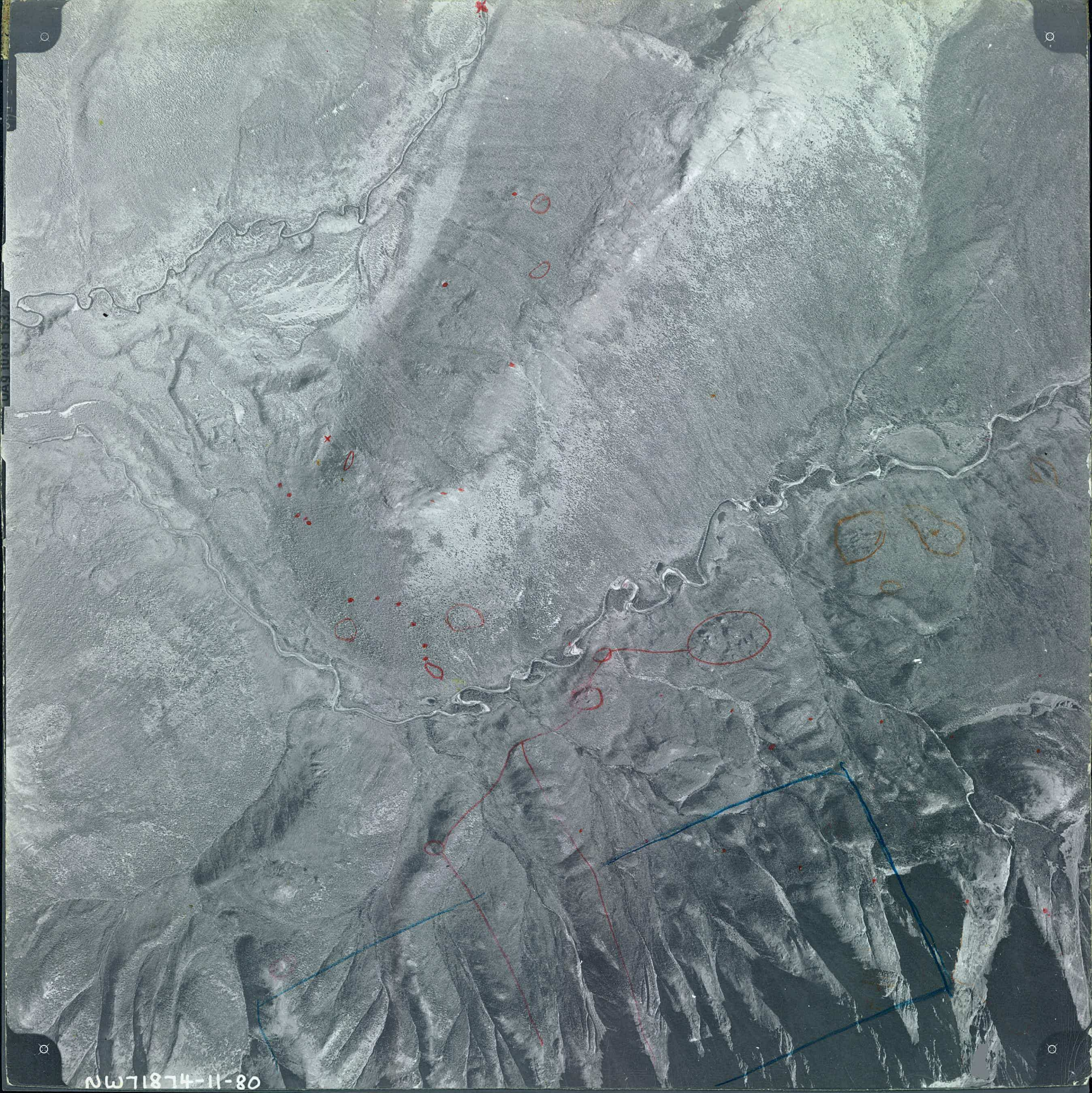


71874-11-80
NW 71874-11-80

Sub
Rounded
108. Bunker



71874-11-80



NW71874-11-80

JPF
JULY 19/77

JULY 21/77
JPF

18-11-481LN

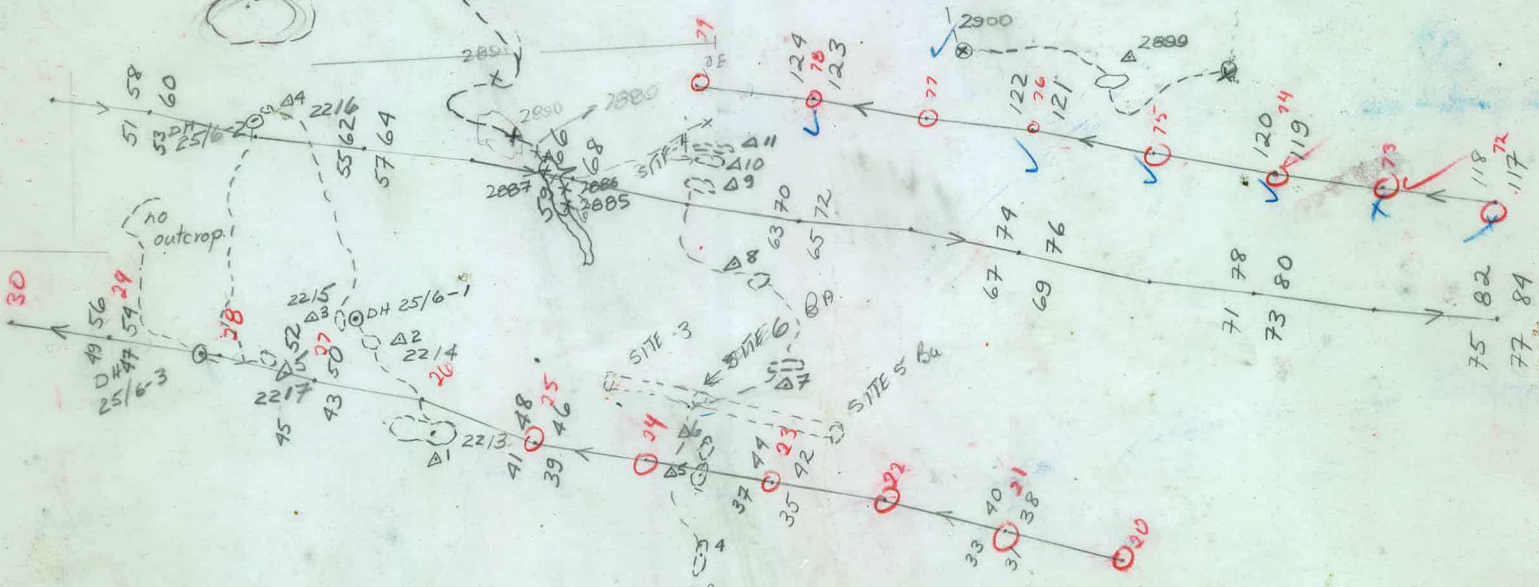


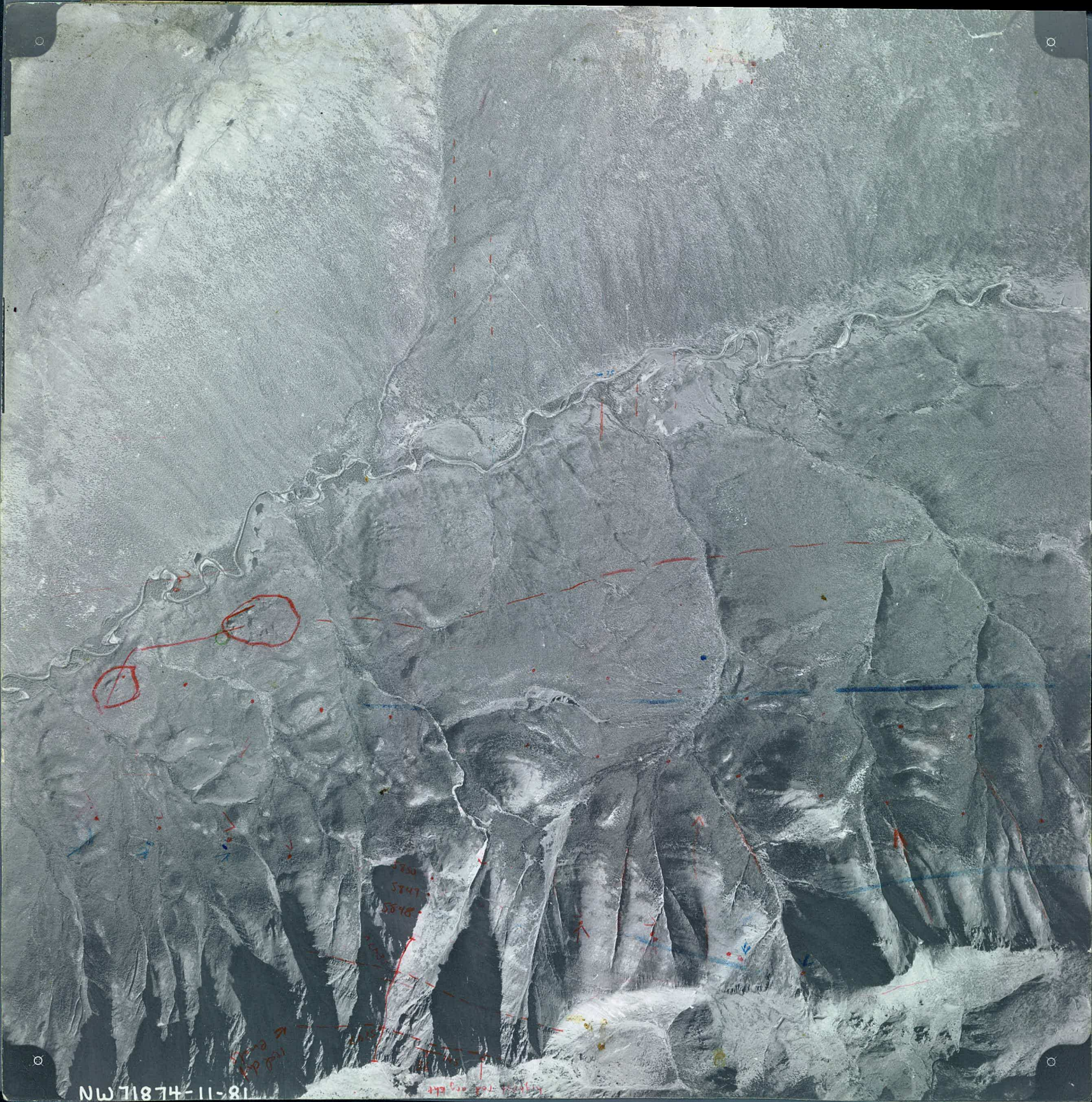
566

CROWN
GRID

JPF
JULY 19/77

JULY 21/77
JPF





NW 71874-11-81

red dot

310
N 50W

SB
2840 SB

2828
2838
2837

2822

2823
2821
2820
2819

JPF
AUG 27/77

2836
2835

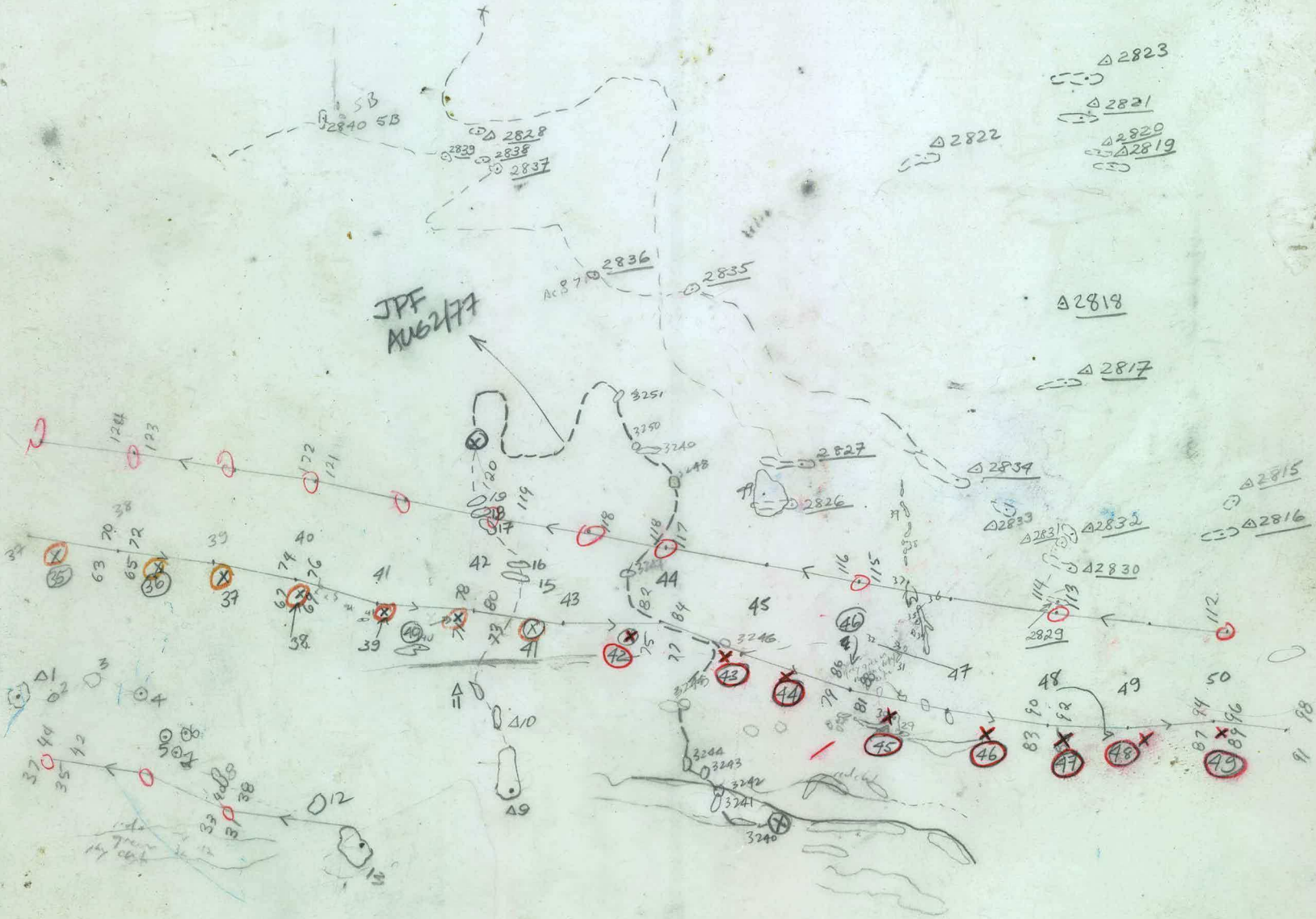
2819

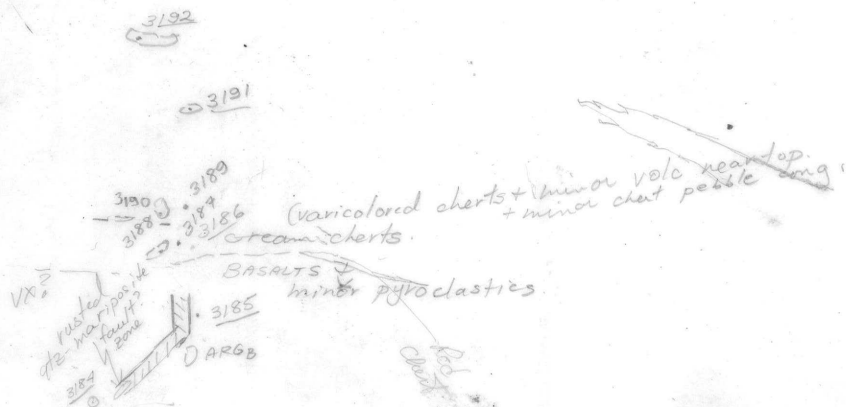
2817

2815
2816



510
N N 50W







U 4, J

CAMP
B2

4

B2

1

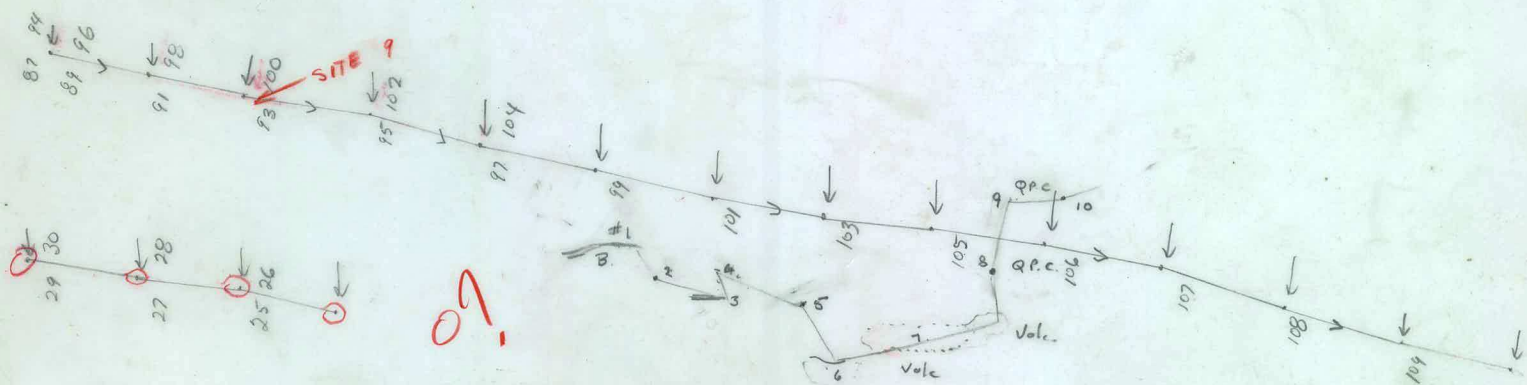
116271874-11-82

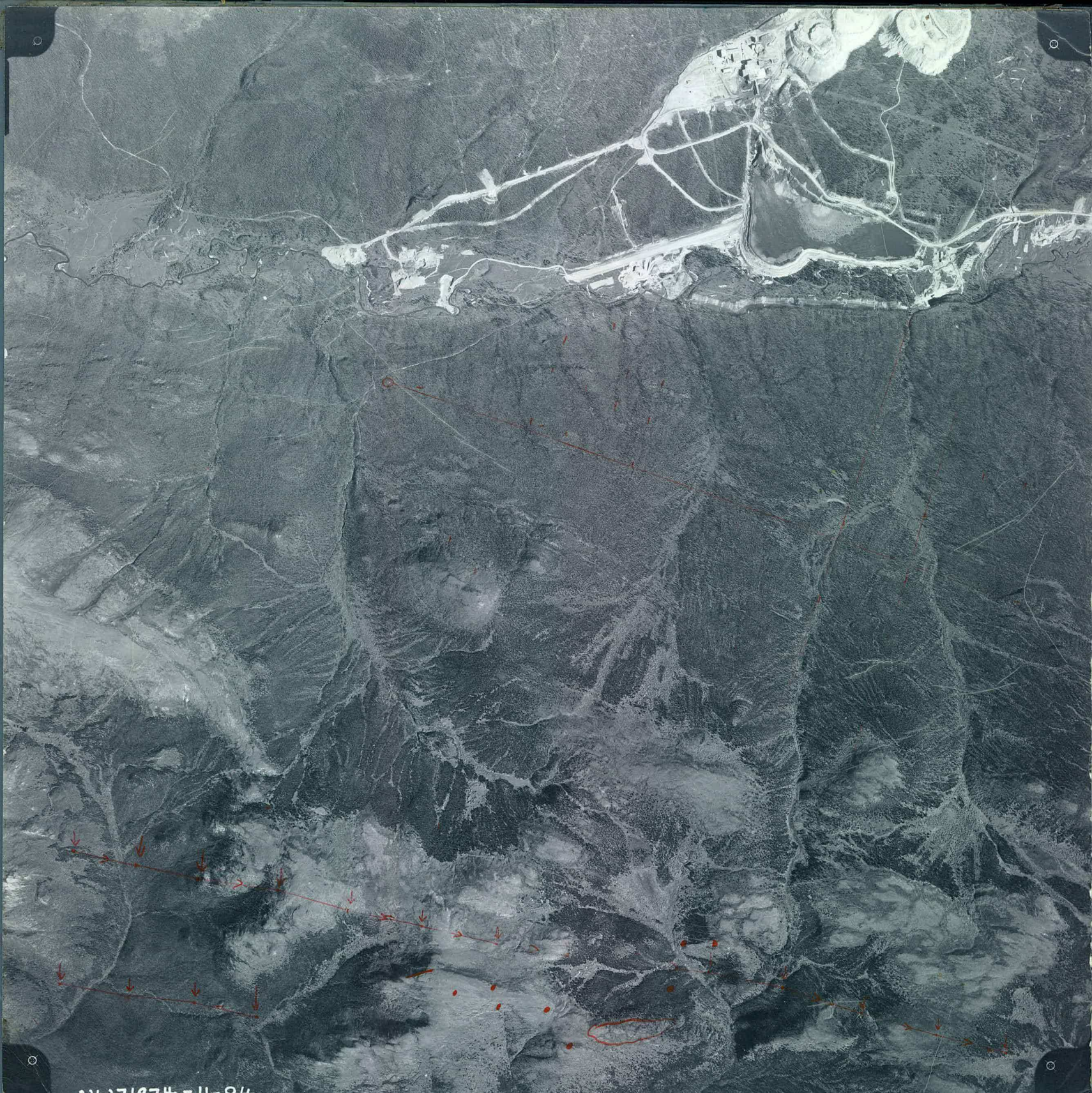
JGS
25 JUN



48-11-84-1874-101

J.G.S
25 JUN





Plotted

4123

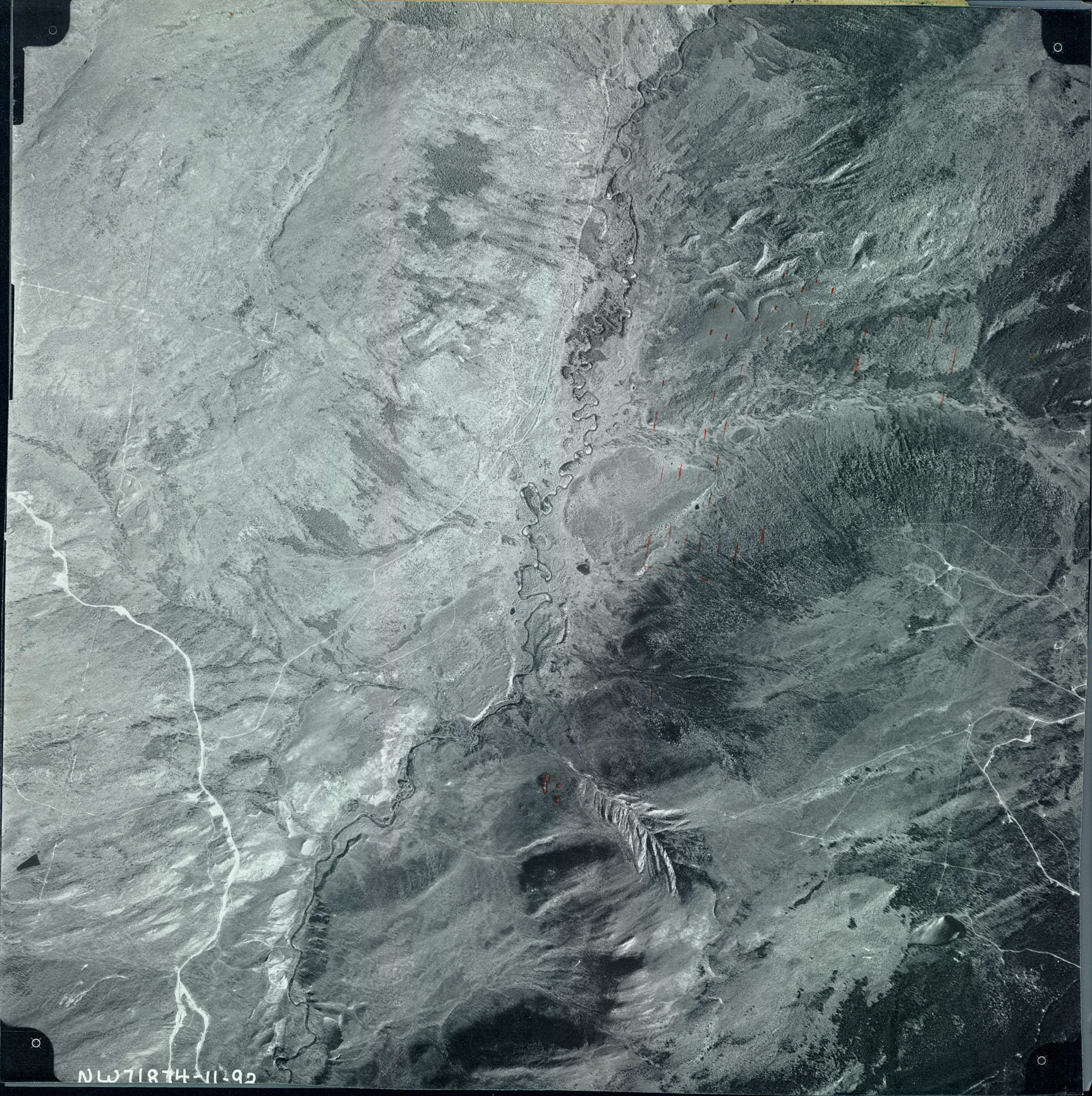
8-17
1947

NW 71874-11295

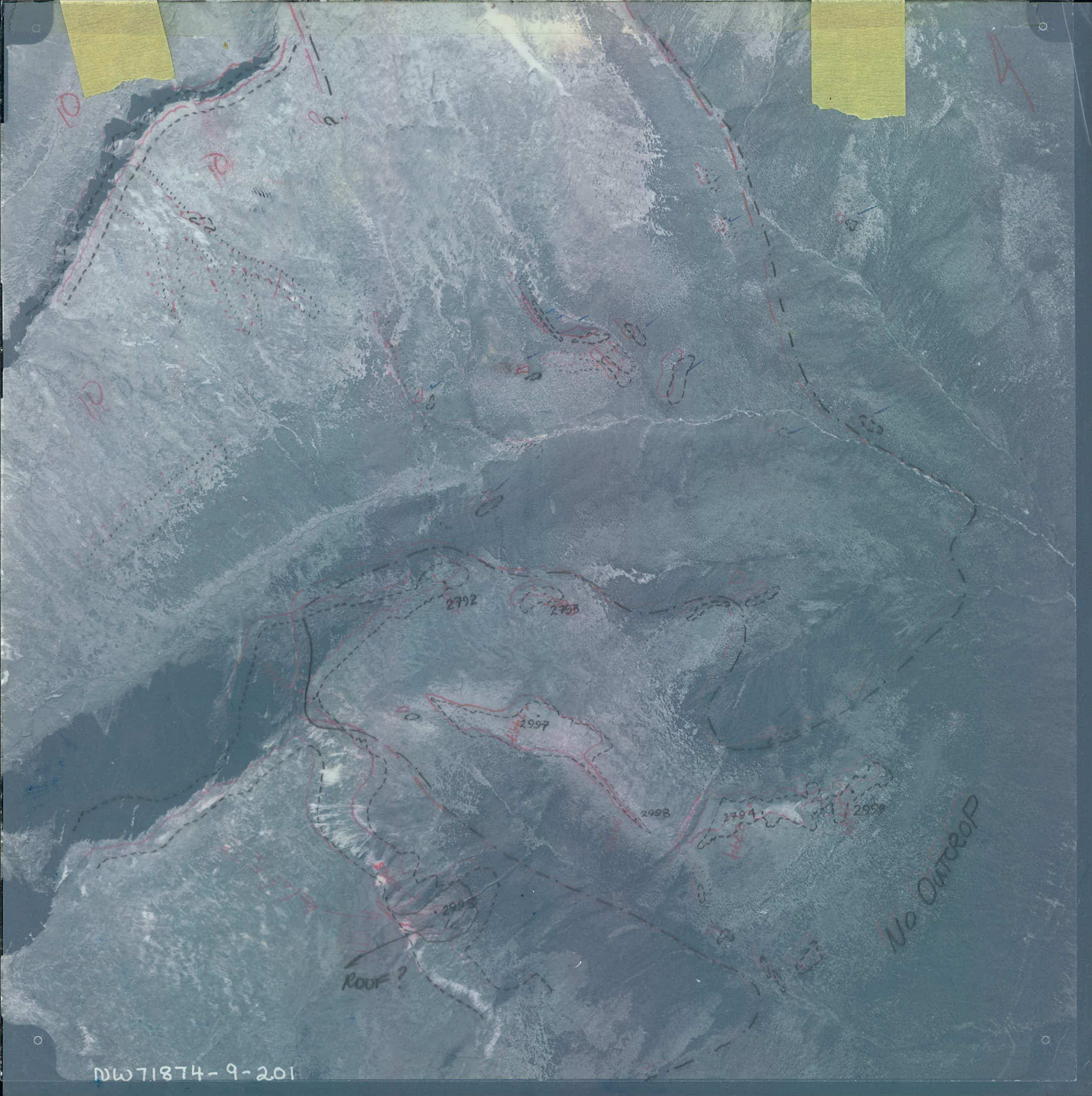
Plotted

4123

Br. 1/2
Cl. 1/2



NW71874-11-92



2992

2993

2997

2998

2994

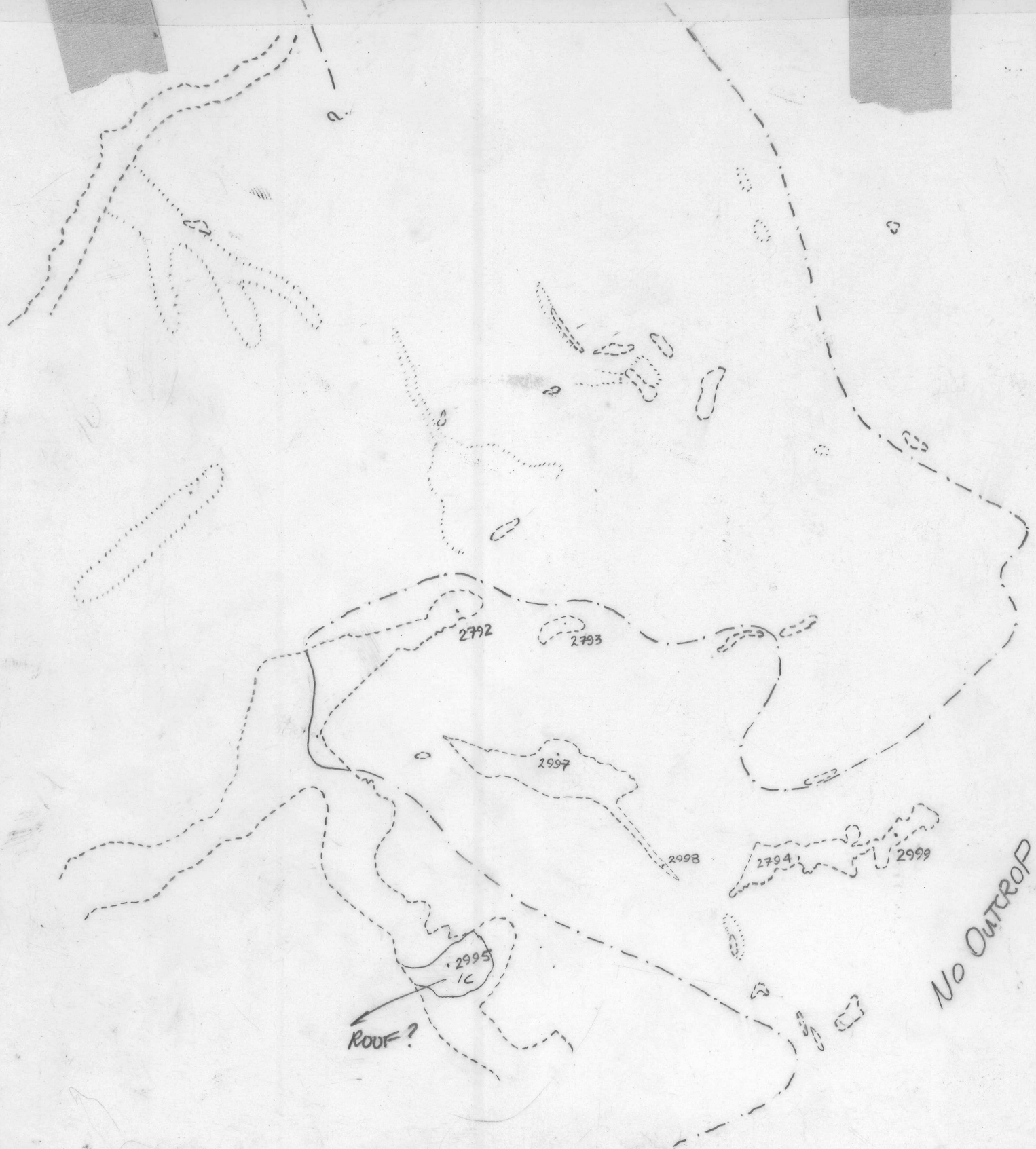
2999

2995

ROOF?

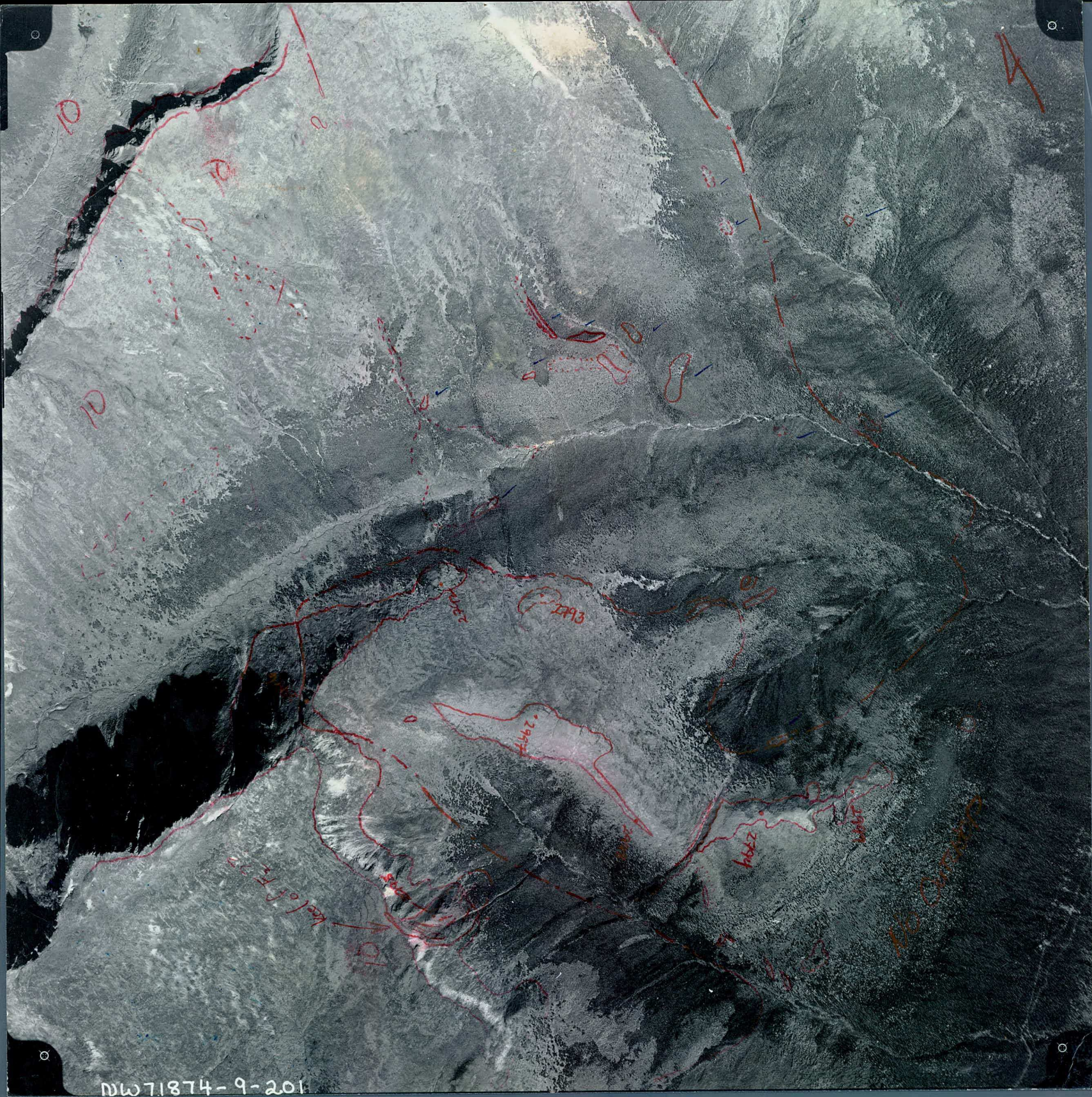
No OUTCROP

NW71874-9-201

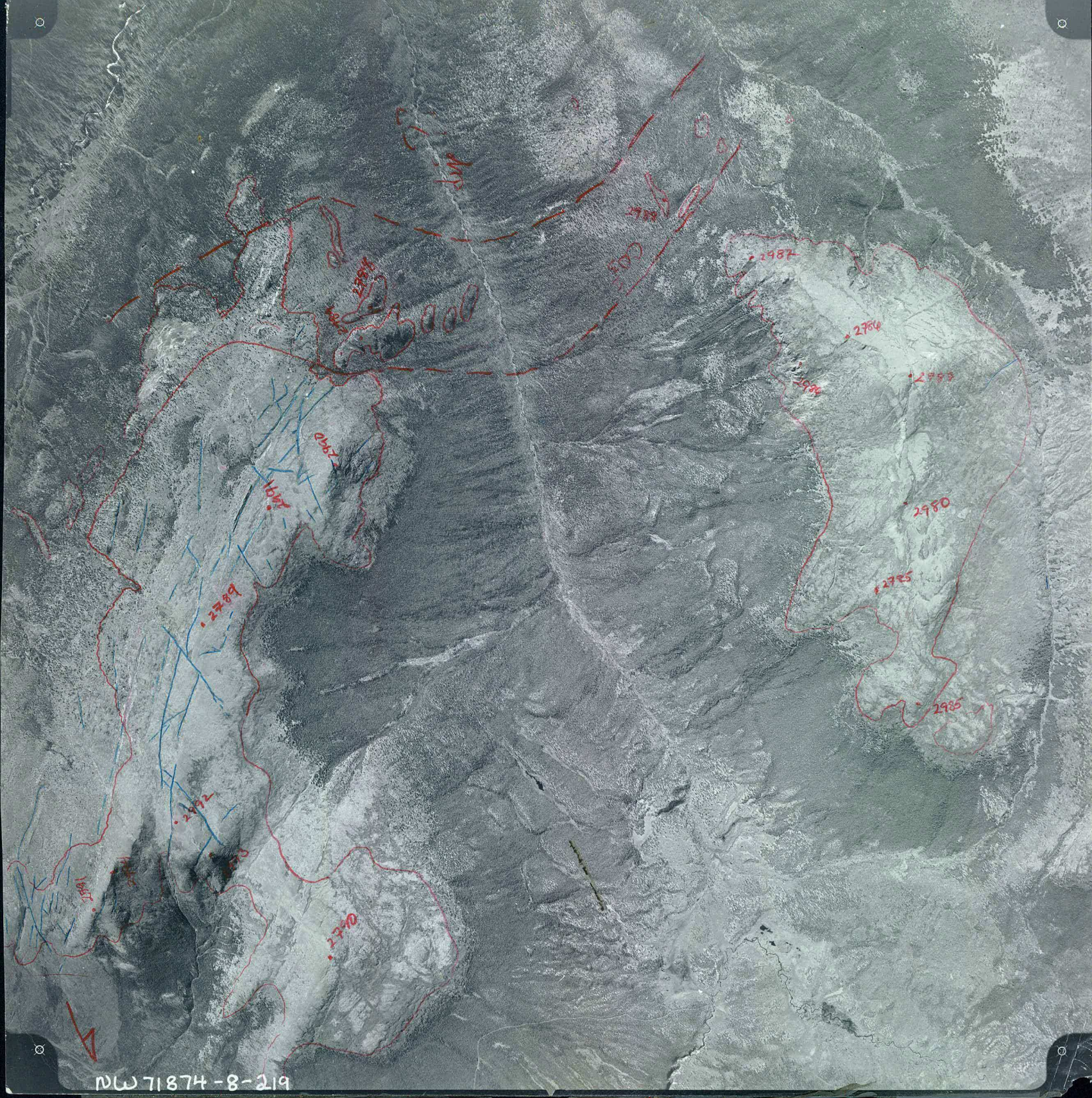


ROOF?

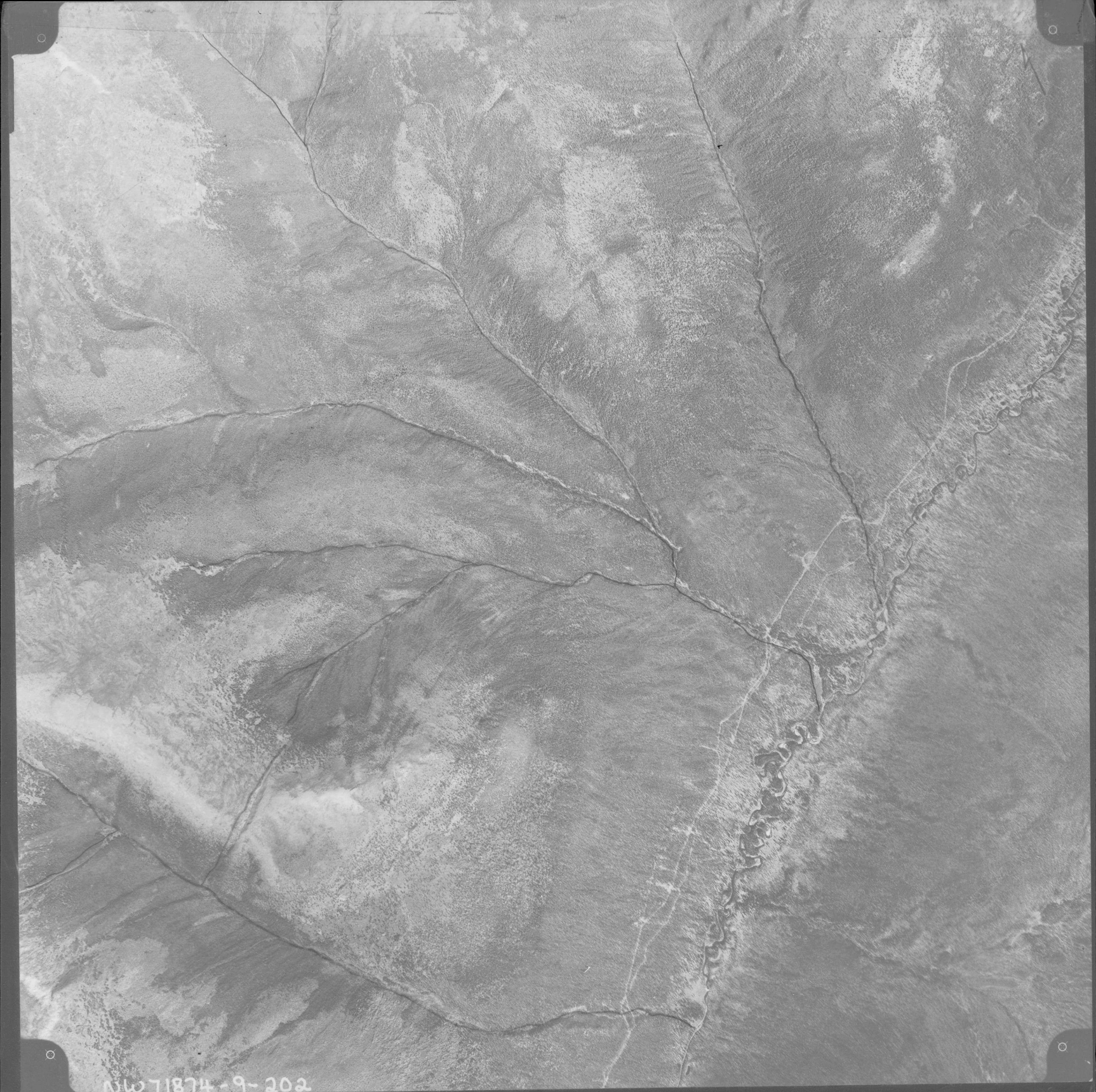
No OUTCROP



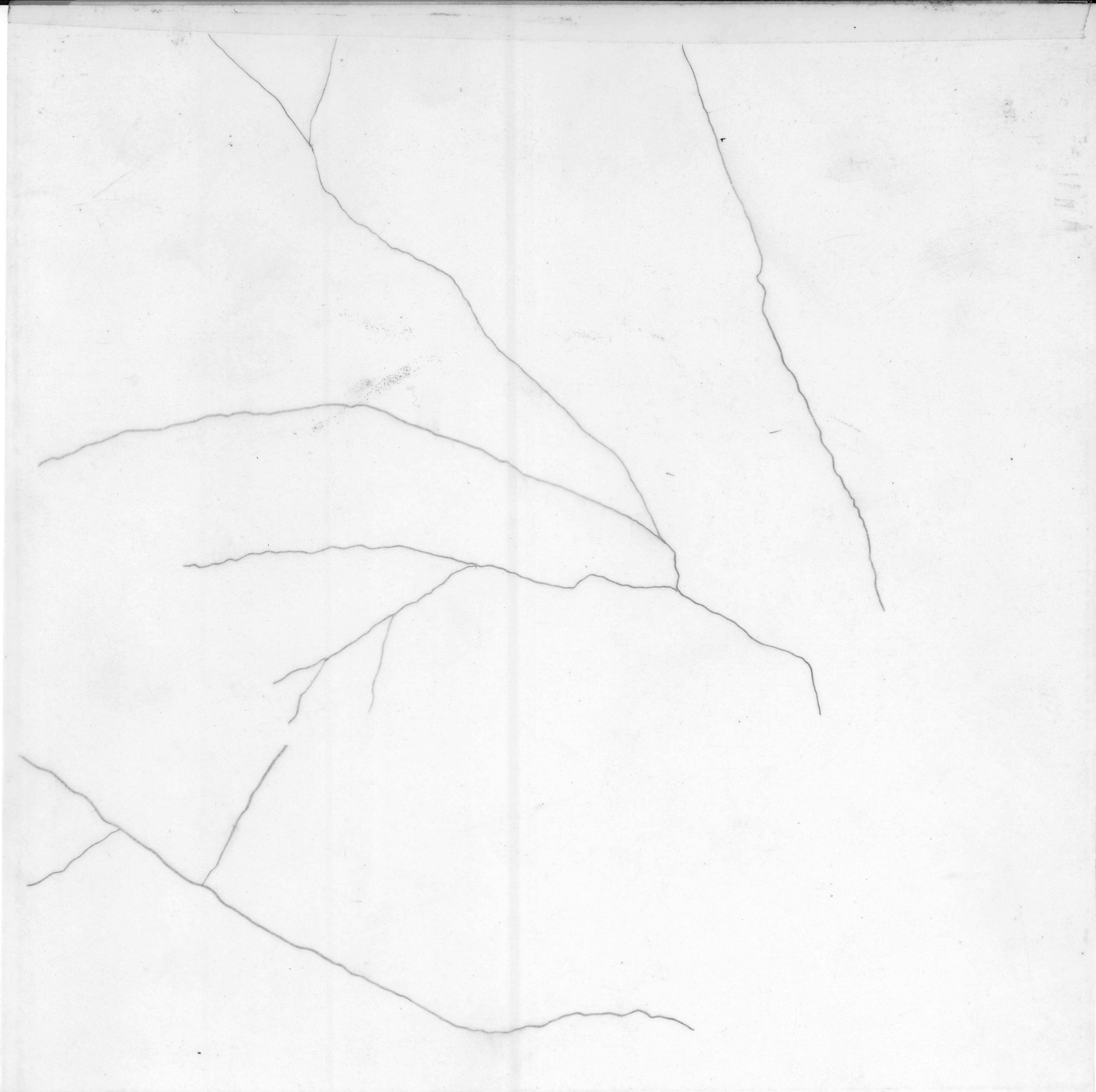
NW71874-9-201

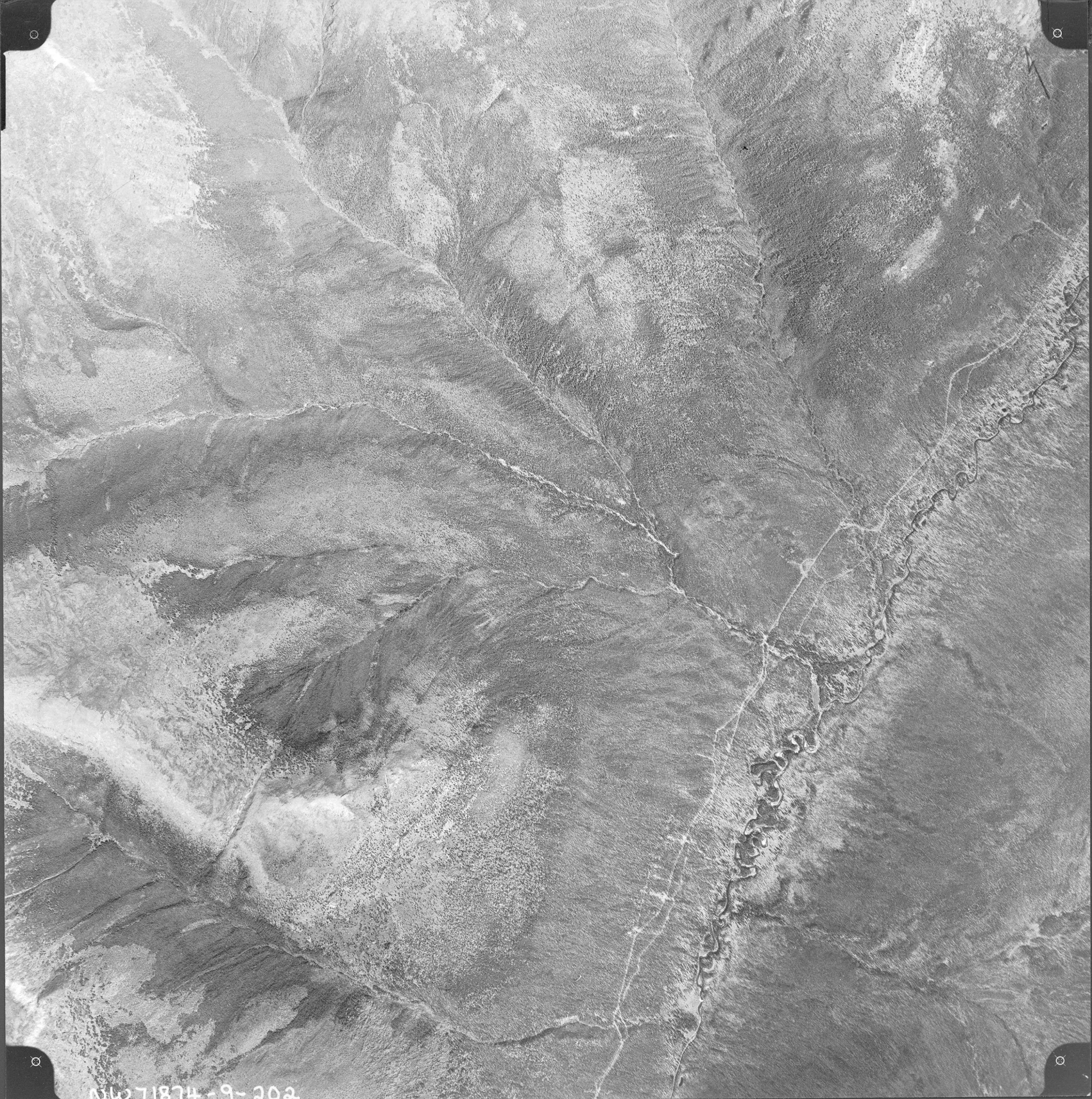


NW 71874-8-219

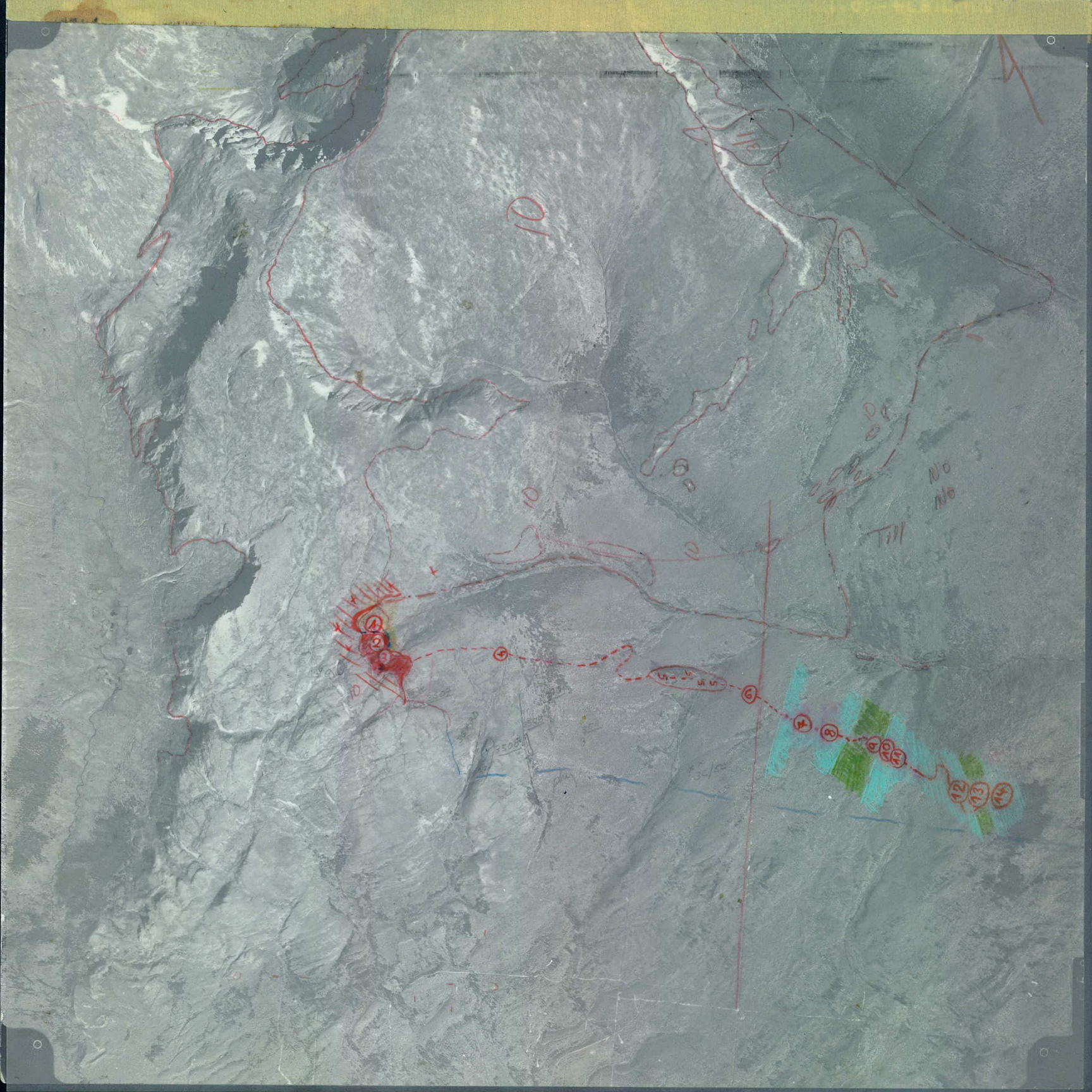


NSC 71874-9-202



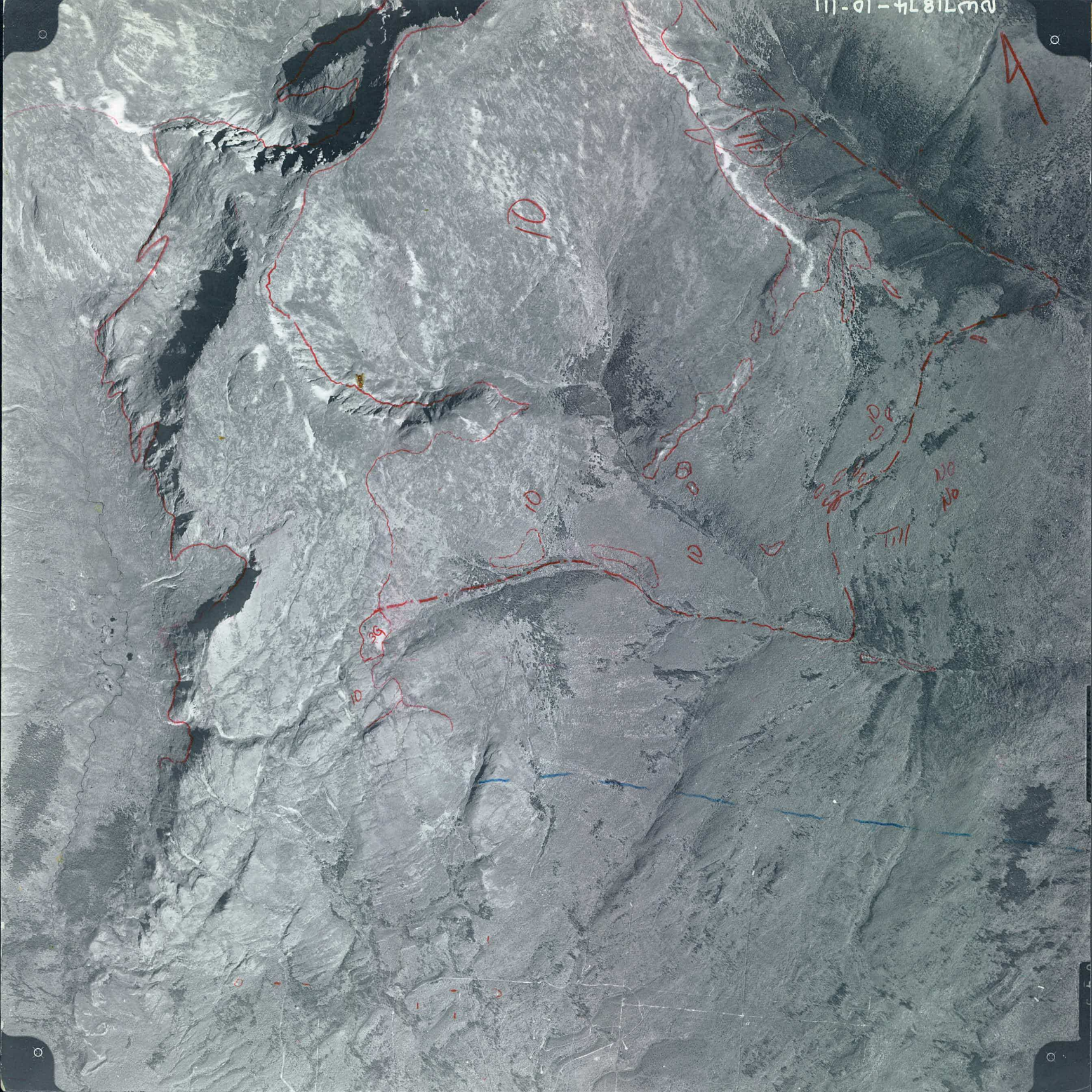


NW 71874-9-202





111-01-4L81270



10

11a

10

12

10

111

No
No



105K