

105-K-6 PELLY RIVER MINES

REVIEW OF FIELDWORK 1980 AND

PROPOSED PROGRAM AND BUDGET 1981

By: B. V. Hall, Geologist

December 1980

**018850**

FILE COPY

PELLY RIVER MINES

Review of Fieldwork 1980

And Proposed Program and Budget

1981

By:

B.V. Hall

Geologist

CYPRUS ANVIL MINING CORPORATION

December 1980

## TABLE OF CONTENTS

Introduction .....	1
1980 Results .....	1
1. DY Deposit Drilling .....	1
2. Geology .....	2
3. Legal Surveys .....	2
4. Topographic Surveys and Orthophoto Maps .....	3
5. Claims .....	3
6. Proposed Work Program, 1981 .....	3
Appendices	
I Summary Drill Logs	
II Assay Logs	
III Claim Summary Sheets	
IV 1980 Costs	
V 1981 Budget Estimate	
Maps	
Map No. 1 DY Deposit Borehole Locations and Geology (scale 1:2,000)	
Map No. 2 DY Deposit High Grade Zones (scale 1:2,000)	

## PELLEY RIVER MINES

### Review of Fieldwork 1980

#### INTRODUCTION

Work involving Pelly River Mines holdings was once again centered on the DY deposit. Four holes were drilled on the Gale claim blocks. Three of which (80-X-06, 80-X-10, 80-X-12) extended the southern margin of the deposit, and one (80-X-03) tested, but failed to intersect significant mineralization on the northwestern margin. Hole 80-X-10 intersected 16.9 m of 11.91% Pb+Zn combined, and extensions of this mineralization are still open to the south.

Although one hole was planned for the Joe claims testing along strike extensions of the Faro deposit stratigraphy, access difficulties due to permafrost forced postponement of this hole. Other work included the establishment of four survey stations on the Gale claims and the completion of the topographic and orthophoto maps.

#### 1980 RESULTS

##### 1. DY Deposit Drilling

A total of thirteen holes were drilled on the DY deposit in 1980, nine on Cyprus Anvil's DY claims, and four on Pelly River Mines' Gale claims. Results were, on the whole, encouraging especially in the southern margin of the deposit. Overall both the grade and tonnage of the deposit increased. Preliminary figures now indicate approximately 18 million tonnes at 13% Pb+Zn combined.

Holes 80-X-06, 80-X-10 and 80-X-12 collared on Gale 25 encountered significant sulphide mineralization (Appendices I and II). In addition these holes indicate the ore body is still open to the south. Metal zoning patterns and sulphide facies relationships both suggest the possibility of further high grade mineralization to the south. Hole 80-X-10 tends to collaborate this pattern as it contained the best assay interval of the 1980 drilling.

Hole 80-X-03 was designed to test the possibility of high grade mineralization on the northwestern flank of the deposit, as suggested by metal zoning and sulphide facies relationships. Unfortunately a thick zone of chloritic phyllites (possibly pyroclastic in origin) was found to occupy the same stratigraphic interval as the sulphides. This precluded the possibility of encountering sulphide mineralization in this portion of the deposit.

## 2. Geology

A revised geological map interpreting surface mapping and projected drill data has been produced on the new 1:2,000 orthophoto base. The only salient change from the previous interpretation was the westerly extension of the metabasite-chloritic phyllite zone situated about L16+50E, 200S to L7+50E, 50S.

## 3. Legal Surveys

The conversion of the claims covering the DY deposit to mining lease was postponed until 1981. This decision was made in order to file the maximum amount of assessment work on claims outside the confines of the proposed mining lease. The revised claim outlines generated by the 1979 claim survey are shown on the accompanying geological maps (see Map #1).

4. Topographic Surveys and Orthophoto Maps

Completed 1:5,000 scale orthophoto and topographic maps for the Anvil District are now in hand. Also complete, are detailed (1:2,000) scale maps for the DY, Grum and Vangorda deposit areas, plus corrected UTM co-ordinates for the control stations and DY drill hole collars. In addition, four new control stations were established on the Gale claims to aid in surveying drill holes on the DY deposit.

5. Claims

Approximately 450 claim years were filed as assessment credits on Pelly River Mines ground. Work on both Pelly River Mines claims and adjacent ground was used in order to attain the maximum amount of assessment credits. Copies of updated claim records, with revised expiry dates for all Pelly River Mines claims and fractions are included as Appendix III.

6. Proposed Work Program - 1981

Re-evaluation of tonnage and grade based on all DY drilling to the end of 1980 is in progress. Similarly a re-interpretation of all sections and a computer based geological model is in preparation. Based on the information to date only three holes are planned on DY for 1981, all of which will be collared on Pelly River Mine's claims. Two of these are sited on GALE 25 to test the southwest margin of zone 4 mineralization, and a third on DY 41 southeast of the dyke interference zone to test possible continuation of zone 3. Any mineralization occurring south of the dyke interference zone as a continuation of zone 4, would likely be too deep for current drilling and mining methods also given the wide separation from known ore zones northwest of the

dyke zone. The accumulated data will be used to carry out a preliminary feasibility study on which to base plans for further underground exploration and development.

SUMMARY LOGDDH 80-X-03

<u>Meters</u>			
0.0	- 28.3		Overburden
28.3	- 51.9	5B	Calcareous muscovite-chlorite phyllite.
51.9	- 56.9	5C	Metabasite.
56.9	- 61.0	5B	Calcareous muscovite-chlorite phyllite.
61.0	- 89.3	5C	Metabasite.
89.3	- 96.5	5D	Chloritic phyllite.
96.5	- 435.8	5B	Variably calcareous muscovite-chlorite phyllite.
435.8	- 439.7	5D	Calcareous chloritic phyllite.
439.7	- 442.2	5B	Calcareous muscovite-chlorite phyllite, variably chloritic.
442.2	- 454.5	5D	Calcareous chloritic phyllite.
454.5	- 459.5	5B	Calcareous muscovite-chlorite phyllite.
459.5	- 471.5	5D	Calcareous chloritic phyllite.
471.5	- 475.7	5B	Calcareous muscovite-chlorite phyllite, minor chloritic phyllite.
475.7	- 527.2	5D	Calcareous chloritic phyllite.
527.2	- 543.0	5B	Calcareous muscovite-chlorite phyllite.
543.0	- 543.8	4E	Massive pyrite.
543.8	- 545.6	5A	Brecciated graphitic phyllite.
545.6	- 551.3	5D	Chloritic phyllite.
551.3	- 558.3	5A	Brecciated graphitic phyllite.
558.3	- 571.5	3F	Brecciated and silicified marble.
571.5	- 578.8	3D	Calc-silicate phyllite.
578.8	- 579.8	4H	Base metal bearing massive pyrrhotite.
579.8	- 632.9	0D	Quartz diorite, minor biotite, equigranular, minor bands of biotite-quartz-feldspar gneiss.
632.9	- 640.6	1C	Quartz-feldspathic, biotite muscovite gneiss.
640.6	- 665.8	0D	Quartz diorite.
665.8	- 673.5	3D	Calc-silicate schist.
673.5	- 697.7	1C	Quartz-feldspathic-biotite-muscovite-gneiss.
697.7	- 699.3	0D	Quartz diorite.

(Contd.)

Summary Log  
DDH 80-X-03

Meters

699.3 - 705.1	1A	Hornblende-quartz gneiss.
705.1 - 707.9	0C	Tourmaline bearing pegmatite.
707.9 - 711.1	1A	Hornblende-quartz gneiss.
711.1 - 712.6	1C	Quartzo-feldspathic-biotite-muscovite-gneiss.
712.6 - 715.7	1A	Hornblende-quartz gneiss.
715.7 - 730.9	3D	Calc-silicate schist.
730.9 - 734.1	0C	Tourmaline bearing pegmatite.
734.1 - 741.9	3D	Calc-silicate schist.
741.9 - 742.7	0C	Tourmaline bearing pegmatite.
742.7 - 759.9	3D	Calc-silicate schist.
759.9 - 762.2	0C	Tourmaline-garnet bearing pegmatite.
762.2 - 771.8	3D	Calc-silicate schist.
771.8 - 786.9	0D	Quartz diorite.
786.9 - 790.7	3D	Calc-silicate schist.
790.7 - 795.5	0D	Quartz diorite.

END OF HOLE

SUMMARY LOGDDH 80-X-06

<u>Meters</u>			
0.0 - 16.0			Overburden
16.0 - 40.5	5C		Metabasite
40.5 - 47.2	5D		Chloritic phyllite
47.2 - 576.6	5B		Calcareous muscovite - chlorite phyllite
576.6 - 588.3	0D		Quartz diorite
588.3 - 598.6	5B		Calcareous muscovite - chlorite phyllite
598.6 - 634.7	5D		Chloritic phyllite
634.7 - 842.5	5B		Variably calcareous muscovite - chlorite phyllite
842.5 - 848.7	4G		Baritic massive sulphides
848.7 - 850.6	4A		Ribbon banded sulphide bearing graphitic quartzite
850.6 - 864.7	4L		Alteration overprint
864.7 - 870.2	4E		Massive pyritic sulphides
870.2 - 874.2	5B		Calcareous muscovite - chlorite phyllite
874.2 - 877.1	4G		Baritic massive sulphides
877.1 - 885.4	4D		Base metal bearing pyritic quartzites
885.4 - 896.6	4E		Massive pyritic sulphides
896.6 - 917.8	4C		Pyritic quartzite
917.8 - 946.0	4L		Alteration overprint
946.0 - 955.0	4G		Baritic massive sulphides
955.0 - 959.2	4A		Ribbon banded sulphide bearing pyritic quartzite
959.2 - 961.9	4G		Baritic massive sulphides
961.9 - 994.2	5A		Graphitic phyllite
994.2 - 1005.9	5D		Chloritic phyllite
1005.9 - 1010.8	5A		Graphitic phyllite
1010.8 - 1014.7	3D		Calc-silicate schist
1014.7 - 1019.5	3E		Graphitic phyllite
1019.5 - 1050.5	3G		Non-calcareous muscovite chlorite-phyllite
1050.5 - 1099.3	3D		Calc-silicate schist

END OF HOLE

SUMMARY LOG

DDH 80-X-10

Meters

0.0 - 6.1		Overburden
6.1 - 52.1	5B	Calcareous muscovite - chlorite phyllite
52.1 - 100.6	5C	Metabasite
100.6 - 625.5	5B	Calcareous muscovite - chlorite phyllite
625.5 - 633.5	0D	Quartz diorite
633.5 - 671.5	5B	Calcareous muscovite - chlorite phyllite
671.5 - 685.6	5D	Chlorite phyllite
685.6 - 858.6	5B	Calcareous muscovite - chlorite phyllite
858.6 - 860.8	4H	Massive pyhotite
860.8 - 909.8	4L	Alteration overprint
909.8 - 917.1	4G	Massive baritic sulphides
917.1 - 925.8	4E	Massive pyritic sulphides
925.8 - 929.0	4A	Ribbon banded sulphide bearing graphitic quartzite
929.0 - 948.3	4L	Alteration overprint
948.3 - 950.8	4A	Ribbon banded sulphide bearing graphitic quartzite
950.8 - 954.0	4G	Baritic massive sulphides
954.0 - 956.2	4A	Ribbon banded sulphide bearing graphitic quartzite
956.2 - 974.1	5A	Graphitic phyllite
974.4 - 994.4	3G	Non-calcareous muscovite - chlorite phyllite
994.4 - 1006.8	0D	Quartz diorite
1006.8 - 1016.8	3E	Graphitic phyllite
1016.8 - 1030.9	3B	Chlorite phyllite
1030.9 - 1040.2	0D	Quartz diorite
		END OF HOLE

SUMMARY LOG  
DDH 80-X-12

Meters

0.0	-	34.1		Overburden
34.1	-	42.6	5D	Chloritic phyllite
42.6	-	523.0	5B	Calcareous muscovite - chlorite phyllite
523.0	-	543.3	0D	Quartz diorite
543.3	-	602.6	5B	Calcareous muscovite chlorite phyllite
602.6	-	645.2	5D	Chloritic phyllite
645.2	-	682.5	5B	Calcareous muscovite - chlorite phyllite
682.5	-	689.4	5D	Chloritic phyllite
689.4	-	723.4	5B	Calcareous muscovite - chlorite phyllite
723.4	-	731.8	5A	Graphitic phyllite
731.8	-	735.4	4A	Ribbon banded sulphide - bearing graphitic phyllite
735.4	-	823.8	5A	Graphitic phyllite
823.8	-	842.6	5B	Variably calcareous muscovite - chloritic phyllite
842.6	-	857.4	4A	Ribbon banded sulphide - bearing graphitic quartzite
857.4	-	859.2	4E	Massive pyritic sulphides
859.2	-	861.5	4L	Alteration overprint
861.5	-	863.8	4K	Ankeritic massive pyritic sulphides
863.8	-	876.4	4A	Ribbon banded sulphide - bearing graphitic quartzite
876.4	-	882.5	4G	Baritic massive sulphides
882.5	-	895.7	4L	Alteration overprint
895.7	-	902.4	4A	Ribbon banded sulphide - bearing graphitic quartzite
902.4	-	906.7	4E	Massive pyritic sulphides
906.7	-	925.6	5A	Graphitic phyllite
925.6	-	959.2	5B	Variably calcareous muscovite - chlorite phyllite
959.2	-	973.4	5A	Graphitic phyllite
973.4	-	977.3	3B	Chloritic phyllite
977.3	-	984.9	3G	Non-calcareous muscovite chlorite phyllite
984.9	-	987.6	3E	Graphitic phyllite
987.6	-	1028.6	3G	Non-calcareous muscovite chloritic phyllite
1028.6	-	1037.5	3D	Calc-silicate schist
				END OF HOLE

80-X-03CYPRUS ANVIL MINING CORPORATION

Page 1 of 1

GEOCHEMICAL LOG

Kamloops Research and Assay Lab.

<u>From</u>	<u>To</u>	<u>Int.</u>	<u>Samp.</u> <u>No.</u>	<u>Ag/AA</u> <u>GM/MT</u>	<u>Ag/Fa</u> <u>GM/MT</u>	<u>Pb %</u>	<u>Zn %</u>	<u>Pb+Zn</u> <u>%</u>	<u>S.G.</u>	<u>Cu %</u>	<u>BaO %</u>	<u>Au</u> <u>GMS/MT</u>	<u>Po %</u>	<u>Py %</u>	<u>Hg %</u>	<u>Mn %</u>	<u>Unit</u>
543.0	543.8	0.8	1553	45.0		2.38	3.44	5.82		0.17							4E

GEOCHEMICAL LOG

Kamloops Research and Assay Lab.

DDH 80-X-06

<u>From</u>	<u>To</u>	<u>Int.</u>	<u>Samp.</u> <u>No.</u>	<u>Ag/AA</u> <u>GM/MT</u>	<u>Ag/Fa</u> <u>GM/MT</u>	<u>Pb %</u>	<u>Zn %</u>	<u>Pb+Zn</u> <u>%</u>	<u>S.G.</u>	<u>Cu %</u>	<u>BaO %</u>	<u>Au</u> <u>GMS/MT</u>	<u>Po %</u>	<u>Py %</u>	<u>Hg %</u>	<u>Mn %</u>	<u>Unit</u>
842.0	842.5	0.5	1690	6.0		0.35	0.23	0.58		0.44							4H
842.5	844.5	2.0	1682	42.0		2.93	2.84	5.77		0.27							4G
844.5	846.5	2.0	1683	7.0		4.61	5.45	10.06		0.24							4G
846.5	848.7	2.2	1684	66.0		4.71	4.63	9.34		0.33							4G
848.7	850.6	1.9	1685	24.0		1.63	1.45	3.08		0.07							4A
852.5	854.5	2.0	1686	2.0		0.01	0.01			0.01							4L
854.5	856.5	2.0	1687	1.0		0.01	0.01			0.01							4L
856.5	858.5	2.0	1688	3.0		0.15	0.12			0.03							4L
858.5	860.5	2.0	1689	2.0		0.08	0.86			0.03							4L
860.5	861.9	1.4	1691	11.0		0.04	0.06			0.01							4L
861.9	862.7	0.8	1692	2.0		0.22	0.41			0.04							4L
862.7	863.2	0.5	1693	59.0		4.14	6.11	10.25		0.05							4D/L
863.2	863.7	0.5	1694	63.0		4.75	6.65	11.40		0.09							4G
863.7	864.7	1.0	1695	4.0		0.47	0.50	0.97		0.11							4A/L
864.7	867.0	2.3	1696	41.0		2.96	2.51	5.47		0.30							4E
867.0	868.0	1.0	1697	57.0		2.94	3.20	6.14		0.23							4E
868.0	868.5	0.5	1698	6.0		0.60	0.80	1.40		0.06							4L
868.5	870.2	1.7	1699	51.0		2.61	2.73	5.34		0.48							4E
870.2	870.5	0.3	1700	55.0		3.32	0.25 *	3.57		0.24							4H
875.0	875.4	0.4	1701	84.0		6.38	8.13	14.51		0.14							4G
875.4	876.1	0.7	1702	47.0		3.01	2.13	5.14		0.48							4E
876.1	877.1	1.0	1703	79.0		5.83	8.13	13.96		0.12							4G
877.1	877.5	0.4	1704	23.0		0.70	0.44	1.14		0.45							4E
877.5	878.4	0.9	1705	11.0		0.76	1.20	1.96		0.15							4C
878.4	879.9	1.5	1706	21.0		1.15	1.05	2.20		0.34							4A
879.9	881.3	1.4	1707	23.0		1.65	2.17	3.82		0.44							4D
881.3	881.7	0.4	1708	36.0		2.38	4.15	6.53		0.11							4G
881.7	882.3	0.6	1709	8.0		0.61	1.25	1.86		0.33							4D/L
882.3	883.2	0.9	1710	19.0		1.36	2.02	3.38		0.24							4E
883.2	885.4	2.2	1711	127.0		0.96	5.43	6.39		0.15							4D
885.4	886.1	0.7	1712	52.0		4.22	2.00	6.22		0.20							4E
886.1	888.6	2.5	1713	105.0		7.20	6.46	13.66		0.20							4G

GEOCHEMICAL LOG

Kamloops Research and Assay Lab.

<u>From</u>	<u>To</u>	<u>Int.</u>	<u>Samp.</u> <u>No.</u>	<u>Ag/AA</u> <u>GM/MT</u>	<u>Ag/Fa</u> <u>GM/MT</u>	<u>Pb %</u>	<u>Zn %</u>	<u>Pb+Zn</u> <u>%</u>	<u>S.G.</u>	<u>Cu %</u>	<u>BaO %</u>	<u>Au</u> <u>GMS/MT</u>	<u>Po %</u>	<u>Py %</u>	<u>Hg %</u>	<u>Mn %</u>	<u>Unit</u>
888.6	890.6	2.0	1714	30.0		1.99	1.65	3.64		0.36							4E
890.6	891.5	0.9	1715	13.0		0.30	0.45	0.75		0.48							4E
891.5	893.0	1.5	1716	37.0		2.19	2.14	4.33		0.27							4C
893.0	893.7	0.7	1717	81.0		5.29	3.72	9.01		0.16							4G
893.7	895.7	2.0	1718	12.0		0.57	0.86	1.43		0.31							4E
895.7	896.6	0.9	1719	22.0		0.77	0.82	1.59		0.42							4E
896.6	898.6	2.0	1720	45.0		3.37	1.42	4.79		0.18							4C
898.6	900.6	2.0	1721	10.0		0.90	2.04	2.94		0.05							4C
900.6	902.6	2.0	1722	29.0		2.44	5.84	8.28		0.04							4C
902.6	904.3	1.7	1723	31.0		2.18	5.31	7.49		0.08							4C
904.3	906.6	2.3	1724	10.0		0.84	1.85	2.69		0.17							4A
906.6	908.6	2.0	1725	4.0		0.30	0.68	0.98		0.12							4C
908.6	910.6	2.0	1726	19.0		1.20	1.42	2.62		0.38							4C
910.6	914.6	4.0	1727	8.0		0.53	0.92	1.45		0.34							4C
914.6	916.6	2.0	1728	2.0		0.13	0.15			0.25							4C
916.6	917.8	1.2	1729	5.0		0.08	0.06			0.31							4C
946.0	946.5	0.5	1730	35.0		1.11	1.80	2.91		0.13							4A
946.5	946.9	0.4	1731	43.0		0.62	0.37	0.99		0.11							4E
946.9	948.9	2.0	1732	51.0		2.40	2.08	4.48		0.17							4G
948.9	950.9	2.0	1733	31.0		1.08	1.69	2.77		0.18							4G
950.9	952.9	2.0	1734	63.0		2.72	3.07	5.79		0.22							4G
952.9	955.0	2.1	1735	32.0		2.20	4.31	6.51		0.18							4G
955.0	957.2	2.2	1736	24.0		1.71	3.26	4.97		0.10							4A
957.2	959.2	2.0	1737	7.0		0.62	1.06	1.68		0.14							4A
959.2	959.8	0.6	1738	59.0		4.52	1.52	6.04		0.23							4L
959.8	961.9	2.1	1739	57.0		2.73	3.89	6.62		0.25							4G
961.9	962.4	0.5	1740	5.0		0.28	0.24	0.52		0.12							4L/C
962.4	964.3	1.9	1741	7.0		0.76	1.43	2.19		0.09							4A
977.9	979.4	1.5	1742	3.0		0.43	1.73	2.16		0.01							4A
994.2	994.7	0.5	1743	40.0		3.27	4.15	7.42		0.27							4G

GEOCHEMICAL LOG

Kamloops Research and Assay Lab.

BEST SECTIONS

		<u>Int.</u>	<u>Ag/AA</u> <u>GM/MT</u>	<u>Pb %</u>	<u>Zn %</u>	<u>Pb+Zn</u> <u>%</u>
875.0	877.1	2.1	64.5	4.99	6.13	11.12
883.2	888.6	5.4	107.0	4.27	5.46	9.73
900.6	904.3	3.7	30.0	2.32	5.60	7.92

DDH 80-X-10

## GEOCHEMICAL LOG

Kamloops Research and Assay Lab.

<u>From</u>	<u>To</u>	<u>Int.</u>	<u>Samp.</u> <u>No.</u>	<u>Ag/AA</u> <u>GM/MT</u>	<u>Ag/Fa</u> <u>GM/MT</u>	<u>Pb %</u>	<u>Zn %</u>	<u>Pb+Zn</u> <u>%</u>	<u>S.G.</u>	<u>Cu %</u>	<u>BaO %</u>	<u>Au</u> <u>GMS/MT</u>	<u>Po %</u>	<u>Py %</u>	<u>Hg %</u>	<u>Mn %</u>	<u>Unit</u>
858.6	860.8	2.2	1857	63.0		3.24	3.95	7.19		0.35							4H
860.8	862.4	1.6	1858	4.0		0.03	0.05			0.15							4L
862.4	864.4	2.0	1859	5.0		0.26	0.21			0.15							4L
864.4	866.4	2.0	1860	5.0		0.03	0.06			0.10							4L
866.4	868.4	2.0	1861	1.0		0.04	0.11			0.10							4L
868.4	870.4	2.0	1862	2.0		0.03	0.07			0.15							4L
870.4	872.4	2.0	1863	3.0		0.02	0.06			0.14							4L
874.4	876.9	2.5	1864	6.0		0.05	0.11			0.11							4L
876.9	877.9	1.0	1865	5.0		0.07	0.12			0.07							4L
877.9	879.8	1.9	1866	5.0		0.10	0.14			0.06							4L
879.8	881.5	1.7	1867	27.0		2.31	3.19	5.50		0.06							4A
881.5	881.8	0.3	1868	46.0		3.67	5.75	9.42		0.05							4C
909.8	910.6	0.8	1869	78.0		6.20	6.74	12.94		0.07							4G/K
910.6	911.3	0.7	1870	73.0		3.90	4.66	8.56		0.09							4E/K
911.3	912.5	1.2	1871	115.0		7.80	7.92	15.72		0.11							4G
912.5	912.9	0.4	1872	113.0		6.10	4.83	10.93		0.21							4K
912.9	913.5	0.6	1873	140.0		7.20	7.46	14.66		0.25							4G/K
913.5	915.5	2.0	1874	121.0		7.10	10.40	17.50		0.14							4G
915.5	917.1	1.6	1875	121.0		6.60	10.70	17.30		0.15							4G
917.1	918.7	1.6	1876	116.0		4.90	4.04	8.94		0.27							4E/K
918.7	919.1	0.4	1877	103.0		6.80	8.71	15.51		0.21							4G
919.1	921.1	2.0	1878	40.0		2.47	3.84	6.31		0.22							4E/K
921.1	922.3	1.2	1879	66.0		4.87	7.10	11.97		0.16							4E/K
922.3	922.6	0.3	1880	73.0		4.98	7.70	12.68		0.13							4G
922.6	924.6	2.0	1881	65.0		4.38	6.35	10.73		0.29							4E
924.6	925.8	1.2	1882	68.0		3.47	4.81	8.28		0.29							4E
925.8	926.7	0.9	1883	42.0		2.87	5.55	8.42		0.14							4D
926.7	928.2	1.5	1884	25.0		2.09	4.01	6.10		0.02							4A
928.2	928.6	0.4	1885	99.0		3.22	5.18	8.40		0.20							4G/K
928.6	929.0	0.4	1886	15.0		0.14	0.08	0.22		0.33							4K/E



## CYPRUS ANVIL MINING CORPORATION

Page 1 of 2

DDH 80-X-12

## GEOCHEMICAL LOG

Kamloops Research and Assay Lab.

From	To	Int.	Samp. No.	Ag/AA GM/MT	Ag/Fa GM/MT	Pb %	Zn %	Pb+Zn %	S.G.	Cu %	BaO %	Au GMS/MT	Po %	Py %	Hg %	Mn %	Unit
843.5	844.2	0.7	2003	5.0		0.19	0.14			0.05							4A
844.2	846.0	1.8	2004	37.0		2.01	2.64	4.65		0.10							4A
846.2	848.0	1.8	2005	33.0		2.03	2.95	4.98		0.08							4A
848.0	848.7	0.7	2006	103.0		8.00	8.77	16.77		0.10							4D
848.7	849.3	0.6	2007	47.0		2.42	9.03	11.45		0.03							4E
849.9	851.9	2.0	2008	18.0		1.21	1.69	2.90		0.07							4A
851.9	853.9	2.0	2009	34.0		2.15	2.48	4.63		0.10							4A
853.9	855.9	2.0	2010	7.0		0.33	0.55	0.88		0.09							4A
855.9	857.4	1.5	2011	17.0		0.83	1.45	2.28		0.09							4A
857.4	858.1	0.7	2012	36.0		1.67	7.47	9.14		0.10							4E
858.1	858.9	0.8	2013	55.0		3.31	4.56	7.87		0.13							4G
858.9	859.2	0.3	2014	29.0		1.56	0.69	2.25		0.33							4E
859.2	860.7	1.5	2015	2.0		0.16	0.07	0.23		0.08							4L
860.7	861.5	0.8	2016	4.0		0.33	0.13	0.46		0.11							4L
861.5	861.9	0.4	2017	44.0		1.92	1.24	3.16		0.33							4E
861.9	863.8	1.9	2018	39.0		1.74	2.56	4.30		0.26							4K
863.8	864.2	0.4	2019	18.0		1.01	1.98	2.99		0.12							4A
864.2	865.2	1.0	2020	37.0		2.16	8.06	10.22		0.08							4E
865.2	866.4	1.2	2021	16.0		1.08	2.33	3.41		0.08							4A
868.6	870.8	2.2	2022	28.0		1.22	1.46	2.68		0.07							4A
870.8	872.9	2.1	2023	32.0		0.70	0.35	1.05		0.14							4E
872.9	874.9	2.0	2024	6.0		0.15	0.08	0.23		0.05							4A
874.9	876.4	1.5	2025	12.0		0.45	0.88	1.33		0.06							4A
876.4	877.1	0.7	2026	14.0		0.26	0.16	0.42		0.08							4E
877.1	879.1	2.0	2027	39.0		2.39	2.18	4.57		0.23							4G
879.1	881.1	2.0	2028	43.0		3.28	2.64	5.92		0.22							4G
881.1	882.5	1.4	2029	28.0		1.11	0.77	1.88		0.39							4G
882.5	883.0	0.5	2030	25.0		0.41	0.16	0.57		0.22							4C
884.5	885.3	0.8	2031	14.0		0.34	0.20			0.15							4C
885.3	886.1	0.8	2032	18.0		0.62	0.17			0.27							4C

DDH 80-X-12

GEOCHEMICAL LOG

Kamloops Research and Assay Lab.

<u>From</u>	<u>To</u>	<u>Int.</u>	<u>Samp.</u> <u>No.</u>	<u>Ag/AA</u> <u>GM/MT</u>	<u>Ag/Fa</u> <u>GM/MT</u>	<u>Pb %</u>	<u>Zn %</u>	<u>Pb+Zn</u> <u>%</u>	<u>S.G.</u>	<u>Cu %</u>	<u>BaO %</u>	<u>Au</u> <u>GMS/MT</u>	<u>Po %</u>	<u>Py %</u>	<u>Hg %</u>	<u>Mn %</u>	<u>Unit</u>
886.4	888.4	2.0	2033	2.0		0.39	0.19			0.05							4L
888.4	890.4	2.0	2034	3.0		0.18	0.20			0.03							4L
890.4	892.4	2.0	2035	4.0		0.25	0.29			0.05							4L
892.4	893.8	1.4	2036	7.0		0.43	0.47			0.05							4L
897.6	899.6	2.0	2037	3.0		0.35	0.67			0.10							4A
899.6	901.6	2.0	2038	17.0		1.02	1.96			0.11							4A
901.6	902.4	0.8	2039	5.0		0.22	0.49			0.03							4A
902.4	904.4	2.0	2040	10.0		0.22	0.41			0.01							4E
904.4	906.7	2.3	2041	10.0		0.22	0.14			0.01							4E
906.7	907.4	0.7	2042	66.0		4.05	3.29	7.34		0.09							4C

Appendix III

COMPANY PELLY RIVER MINES CLAIM BILL PROPERTY OWNERSHIP Cyprus Anv. 62.8%  
R.C.V. 28.6%  
C.M.C. 8.6% M.D. Whitehorse N.T.S. 105-K-6

Claim No.	Grant No.	No. of Claims	Staked by	Recording Date	Transfer Information		Due Date	Assessment Work and Remarks
					To	Date		
16	85598	1	M. Ladue	Nov. 16/63	Pelly River Mines	Oct. 19, 1965	March 1, 1989	Assess. Work Filed
17-18	85599-85600	2	G. Sterriah	Nov. 15/63	"	"	March 1, 1989	Date: Feb. 1976
20	85602	1	G. Sterriah	Nov. 15/63	"	"	March 1, 1989	Type: DDH 75-13
22	85604	1	G. Sterriah	Nov. 15/63	"	"	March 1, 1989	(July 11-Aug. 28/75)
24	85606	1	G. Sterriah	Nov. 15/63	"	"	March 1, 1989	*****
26	85608	1	A. Dickson	Nov. 15/63	"	"	March 1, 1989	Assess. Work Filed
28	85610	1	A. Dickson	Nov. 15/63	"	"	March 1, 1989	Date: Nov. 26/76
30	85612	1	A. Dickson	Nov. 15/63	"	"	March 1, 1989	Type: DDH 76-DG-2
32	85614	1	A. Dickson	Nov. 15/63	"	"	March 1, 1989	(June 30-July 22/76)
33-38	85615-85620	6	G. Bob	Nov. 15/63	"	"	March 1, 1989	*****
See QUE FRACTIONS								
Assess. Work Filed Date: Aug. 7, 1980 Amt.: \$225.00 Type: DDH 80-F-01 CERTIFICATES OF WORK NOT RECEIVED								
Assess. Work Filed Date: Oct. 9, 1980 Amt.: \$1,600.00 Type: DDH 80-F-02 CERTIFICATES OF WORK NOT RECEIVED								





Appendix III (continued)

COMPANY PELLEY RIVER MINES CLAIM LO

PROPERTY OWNERSHIP

CAMC 62/88  
R.C.V.28.68  
CMC 8.68

M.D. Whitehorse N.T.S. 105-K-6

Claim No.	Grant No.	No. of Claims	Staked by	Recording Date	Transfer Information		Due Date	Assessment Work and Remarks
					To	Date		
4-7	94121-94124	4	G. Peel	Nov. 18, 1965	Pelley River Mines	Jan. 17, 1966	March 1, 1989	Assess. Work Filed Date: Feb. 1976 Type: DDH 75-15 DDH 75-17 *****
8	94129	1	E. Schacht	Nov. 18, 1965	"	"	March 1, 1989	Assess. Work Filed Date: Nov. 26, 1976 Type: DDH 76-DS-2 June 30-July 22/76 *****
9	94130	1	E. Schacht	Nov. 18, 1965	"	"	March 1, 1989	Assess. Work Filed Date: Sept. 6/79 Amt. \$1,300.00 Type: DDH 79-F-03 *****
10-15	94131-94136	6	E. Schacht	Nov. 18, 1965	"	"	March 1, 1989	Assess. Work Filed Date: Oct. 9, 1980 Amt.: \$1,600.00 Type: DDH 80-F-02 *****
16-19	94137-94140	4	W. R. Ford	Nov. 18, 1965	"	Sept. 27, 1966	March 1, 1989	CERTIFICATES OF WORK NOT RECEIVED

Appendix III (continued)

COMPANY ..... PELLY RIVER MINES ..... CLAIM ..... TIE ..... PROPERTY OWNERSHIP ..... CAMA 62.8% RCV 28.6% CMC 8.6% M.D. ... Whitehorse ..... N.T.S. .... 105-K-6

Claim No.	Grant No.	No. of Claims	Staked by	Recording Date	Transfer Information		Due Date	Assessment Work and Remarks
					To	Date		
1-8	85719-85726	8	P. Charlie	Nov. 15, 1963	Pelly River Mines	Oct. 19, 1965	March 1, 1986	Nov. 1, 1979- Payment in lieu of assess. work forwarded to Common Date all claims to March 1st.  *****
9-16	85727-85734	8	I. Dick	Nov. 15, 1963	"	"	March 1, 1986	
17-24	85735-85742	8	A. McLeod	Nov. 15, 1963	"	"	March 1, 1986	
See QUE FRACTIONS WHI FRACTIONS								

Appendix III (continued)

COMPANY ..... Pelly River Mines CLAIM QUE Fractions ..... PROPERTY OWNERSHIP Cyprus Anvil 63% R.C.V.M. 28% C.M.C. 9% M.D. .... Whitehorse ..... N.T.S. .... 105-K-6

Claim No.	Grant No.	No. of Claims	Staked by	Recording Date	Transfer Information		Due Date	Assessment Work and Remarks
					To	Date		
Related to	<u>BILL CLAIMS</u>							
6-7	Y10566-Y10567	2	J. T. Devere	Sept. 15, 1966	Pelly River Mines	Nov. 17, 1966	March 1, 1989	Assess. Work Filed Date: Sept. 6, 1979 Amt.: \$312.50 Type: DOH 79-F-03
8-9	Y10568-Y10569	2	J. T. Devere	Sept. 15, 1966	"	"	March 1, 1989	
Related to	<u>LO CLAIMS</u>							
10-13	Y10570-Y10573	4	J. T. Devere	Sept. 15, 1966	"	"	March 1, 1989	***** Nov. 1, 1979 Payment in lieu of assess. work to Common Date QUE 17 to March 1st.
14	Y10574	1	Peter Gillis	Sept. 15, 1966	"	"	March 1, 1989	*****
Related to	<u>JOE CLAIMS</u>							
16	Y10575	1	Peter Gillis	Sept. 15, 1966	"	"	March 1, 1986	Assess. Work Filed Date: Aug. 7, 1980 Amt.: \$350.00 Type: DOH 80-F-01
18	Y10577	1	Peter Gillis	Sept. 15, 1966	"	"	March 1, 1986	CERTIFICATES OF WORK NOT RECEIVED
Related to	<u>TIE CLAIMS</u>							
17	Y10576	1	Peter Gillis	Sept. 15, 1966	"	"	March 1, 1986	Assess. Work Filed Date: Aug. 21, 1980 Amt.: \$5,800.00 Type: DOH 80-X-03
Related to	<u>GALE CLAIMS</u>							
21-26	Y10659-Y10664	6	J. Kirkland	Sept. 27, 1966	"	"	March 1, 1993	CERTIFICATES OF WORK NOT RECEIVED
27-28	Y10665-Y10666	2	R. Mieritz	Sept. 27, 1966	"	"	March 1, 1993	Assess. Work Filed Date: Oct. 9, 1980 Amt.: \$450.00 Type: DOH 80-F-02
29-30	Y10667-Y10668	2	R. Mieritz	Sept. 27, 1966	"	"	March 1, 1993	CERTIFICATES OF WORK NOT RECEIVED
31	Y10669	1	R. Mieritz	Sept. 27, 1966	"	June 30, 1977	March 1, 1993	
33-34	Y10671-Y10672	2	R. Mieritz	Sept. 27, 1966	"	Nov. 17, 1966	March 1, 1993	Assess. Work Filed Date: Oct. 9, 1980 Amt.: \$450.00 Type: DOH 80-F-02
35-36	Y10673-Y10674	2	P. Byers	Sept. 27, 1966	"	"	March 1, 1993	CERTIFICATES OF WORK NOT RECEIVED
38-39	Y10676-Y10677	2	P. Byers	Sept. 27, 1966	"	"	March 1, 1993	
41-42	Y10679-Y10680	2	P. Byers	Sept. 27, 1966	"	"	March 1, 1993	
80-81	Y10687-Y10688	2	J. Heinze	Sept. 27, 1966	"	"	March 1, 1993	CERTIFICATES OF WORK NOT RECEIVED
82-85	Y10689-Y10692	4	P. Eineigel	Sept. 27, 1966	"	"	March 1, 1993	
86-87	Y10846-Y10847	2	M. O. Hampton	Oct. 24, 1966	"	June 30, 1977	March 1, 1993	
90-91	YA8246-YA8247	2	S. Buziak	Oct. 1, 1976	"	June 30, 1977	March 1, 1993	

Appendix III (continued)

COMPANY .. Pelly River Mines .. CLAIM .. WHI Fractions .. PROPERTY OWNERSHIP .. C.A.M.C. 63% R.C.M.C. 28% C.M.C. 9% .. M.D. Whitehorse .. N.T.S. 105-K-6

Claim No.	Grant No.	No. of Claims	Staked by	Recording Date	Transfer Information		Due Date	Assessment Work and Remarks
					To	Date		
<u>Related to TIE CLAIMS</u>								
21-24	Y1278-Y1281	4	E. Waddington	March 7, 1966	Pelly River Mines	Nov. 17, 1966	March 1, 1986	Assess. Work Filed Date: Dec. 1/77 Amt. \$9.500 Type: DCN 77-10 & 11 (Kerr Addison) ***** Nov. 7/79 - Payment in lieu of assess. work forwarded to Common Data all claims to March 1st. *****
25	Y1282	1	E. Waddington	March 7, 1966	"	"	March 1, 1986	
26	Y1283	1	E. Waddington	March 7, 1966	"	"	March 1, 1986	
27-32	Y1286-Y1291	6	D. Tully	March 7, 1966	"	"	March 1, 1986	
33-34	Y1284-Y1285	2	E. Waddington	March 7, 1966	"	"	March 1, 1986	
118-121	Y4370-Y4373	4	D. Carlick	April 6, 1966	"	"	March 1, 1986	
122	Y4374	1	D. Carlick	April 6, 1966	"	"	March 1, 1986	
123-125	Y4375-Y4377	3	D. Carlick	April 6, 1966	"	"	March 1, 1986	
126-127	Y4378-Y4379	2	L. Tommy	April 6, 1966	"	"	March 1, 1986	

## APPENDIX IV

I N V O I C EPELLEY RIVER MINES EXPENDITURESTo December 31, 1980

Salaries and Wages	\$ 14,918.23
Consulting Fees (Computer Cost and R & D)	6,279.16
Surveys (Downhole survey and orthophoto)	20,543.76
Drilling	360,438.85
Assays and Geochemical Analyses	2,119.11
Field Equipment and Supplies	6,637.28
Camp Maintenance	15,204.01
Fuel	4,311.19
Miscellaneous Transportation	7,149.91
Property Maintenance	2,600.81
District Expense	135.45
Audit Fees	700.00
Legal Fees	(239.00)
Rental Credit	(165.00)
Total	<u>\$ 440,633.76</u>
Rose Creek Vangorda Mines - 28.57%	\$ (125,889.06)
Cyprus Anvil Mining Corporation - 71.43%	\$ 314,744.70

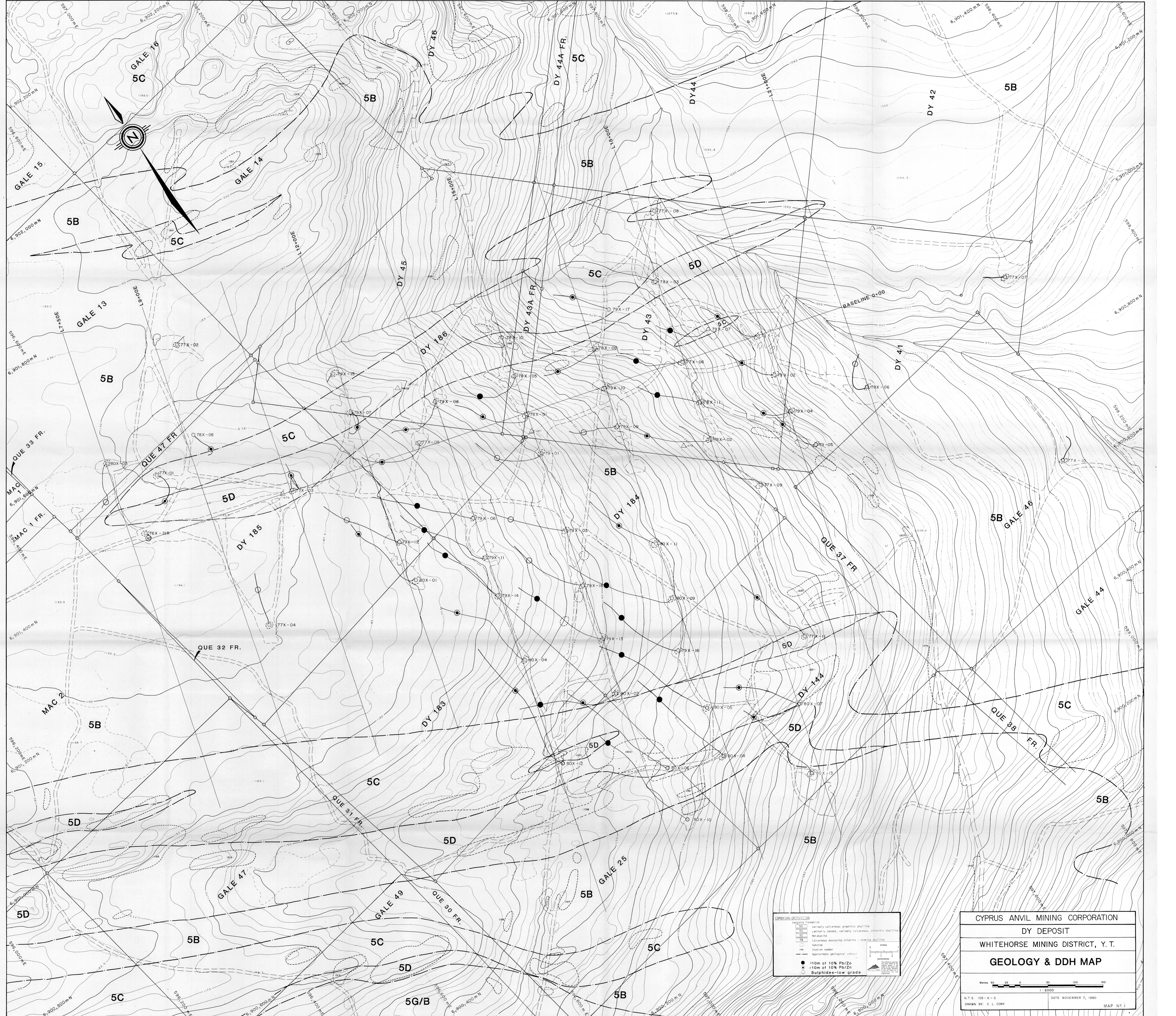
## APPENDIX V

PELLY RIVER MINES1981 BUDGET ESTIMATE

<u>Code</u>	<u>Description</u>	<u>Estimated Cost</u>
01	Salaries and Wages	\$ 12,000
03	Consultants (Computer Costs)	4,000
07	Surveys (Downhole)	12,000
08	Drilling (10,000')	280,000
11	Assays	2,000
12	Field Equipment and Supplies	4,000
13	Camp Maintenance	12,000
14	Fuel (diesel-gas-propane)	3,500
17	Miscellaneous Transportation (vehicles, air fares, shipping)	5,500
33	Property Maintenance (legal costs to lease and assessment fees)	2,500
44	Administration and Overhead and 10% (Accounting, Audit, Legal, Office, Salaries and Supplies, etc.)	33,700
		<hr/> \$ 371,200 <hr/>
	Rose Creek Vangorda Mines - 28.57 %	\$106,052
	Cyprus Anvil Mining Corporation - 71.43 %	\$265,148

Map No. 1 DY Deposit Borehole  
Locations and Geology

Map No. 2 DY Deposit High Grade Zones

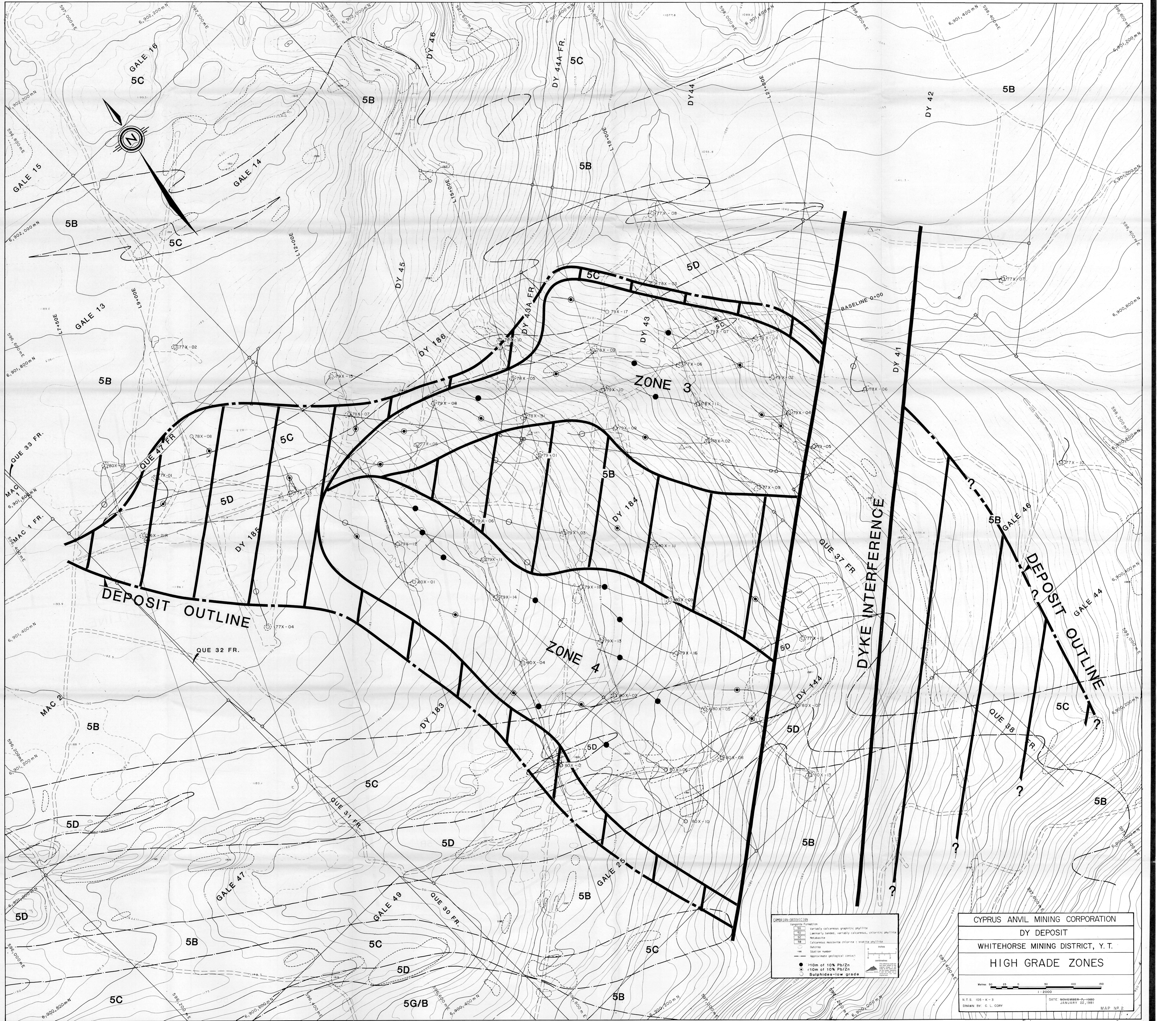


**SYMBOLS AND ABBREVIATIONS**

5A	Variable formation
5B	Partly calcareous granitic gneiss
5C	Layered, variably calcareous, chlorite schist
5D	Micaschist
5E	Calcareous muscovite chlorite - biotite schist
5F	Schist
5G/B	Sulphides - low grade
○	Station number
---	Approximate geological contact
—	Contour
—	Stream
—	Boundary

CYPRUS ANVIL MINING CORPORATION  
 DY DEPOSIT  
 WHITEHORSE MINING DISTRICT, Y. T.  
**GEOLOGY & DDH MAP**

Scale: 1:2000  
 N.T.S. 105-K-3  
 DATE: NOVEMBER 7, 1980  
 DRAWN BY: C. L. GORY  
 MAP NO. 1



**CAMBRIAN-ORDOVICIAN**

5A	variously calcareous granitic phyllite
5B	laminarily banded, variably calcareous, chloritic phyllite
5C	metabasite
5D	calcareous muscovite chlorite + biotite phyllite
5E	outcrop
5F	shallow reef
5G	shallow reef
5H	shallow reef
5I	shallow reef
5J	shallow reef
5K	shallow reef
5L	shallow reef
5M	shallow reef
5N	shallow reef
5O	shallow reef
5P	shallow reef
5Q	shallow reef
5R	shallow reef
5S	shallow reef
5T	shallow reef
5U	shallow reef
5V	shallow reef
5W	shallow reef
5X	shallow reef
5Y	shallow reef
5Z	shallow reef

CYPRUS ANVIL MINING CORPORATION  
 DY DEPOSIT  
 WHITEHORSE MINING DISTRICT, Y. T.  
**HIGH GRADE ZONES**

Metres 0 25 50 100 150  
 1:2000

N.T.S. 105-K-3  
 DRAWN BY: C. L. CORY

DATE: NOVEMBER-1980  
 JANUARY 22, 1981

MAP NO. 2