

CYPRUS ANVIL MINING CORPORATION

DIAMOND DRILL CORE LOG

Hole Number: 74X-22

Fabric Orientation Diagram:

Project: Anvil

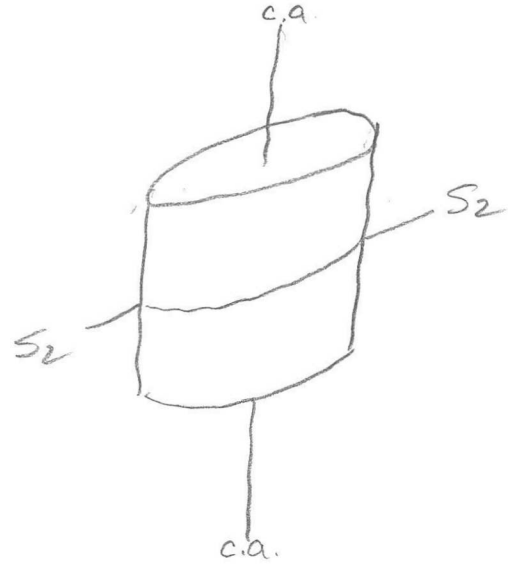
Location: Vangorda Plateau

Claim: Gale 1

Terr. Plane Co-ords.: _____ N

_____ E

KA
Grid Co-ords.: L80E, 11+00N



Elevation: 3900'

All symmetry determinations looking
W with S2 dipping
S with dip azimuth 195.

Total Depth: 1230



Purpose: Test F₁ plunge

Logged by: [Signature] Date(s) Logged: _____

Drilling Contractor: Arctic Core: Size From To Collar Cased and Capped: _____

Started: _____ Completed: _____

Lithologic Log

Logged By: 

Code	From	To	Unit	Code	Description
	10 14 16 20	22 23 25 27			
L	100	195	1	#	Overburden
L	195	2245	2	5B0	Normal calc, med. gray "upper" phyllite
L	2245	2260	3	5F0	Non-calc. chlor-phyll; metatuff band in upper unit
L	2260	3650	4	5B0	Good lithon structure throughout; prevalent D, gtz "swast"
L	3650	3730	5	5A1	Siliceous, non-calc Grun-Van-Dy graph phyll.
L	3730	3890	6	5F0	As unit 3
L	3890	4025	7	5A1	As unit 5; good siliceous RB graph. phyll 389-402.5
L	4025	5605	18	0F0	Duron Ch dikes; post-D ₂ ; gray QM 2 folds of probably related to OFO @ Faro i.e. late in intrusive sequence Upper contact irreg. & brecciated $\approx 11S_2 = 70^\circ S 45^\circ E$; lower contact highly irreg. cannot orient relative to S_2 because 4B1 Greater <small>old terminology = 5A1?</small>
L	5605	6645	9	5A1	As units 5/7; good siliceous/coarse ribbon banded graph. phyll. w/ minor py banding 560.5-607, Fault w/ 3" gouge 664.2-664.5 $\approx 11S_2 = 60^\circ$
L	6645	6810	10	3D1	Weakly calc, med. dk. green calc-silicate assem. w/ no bio. phyll/schist or marble bands
L	6810	7170	11	3F0	Lt. gray, calcitic, silicified marble 15% silicates 85% CO ₂
L	7170	7565		3D1	As unit 10; interval shows overall F ₂ asymmetry
L	7565	8530		3F0	As unit 11; $\approx 30\%$ silicates 70% CO ₂
L	8530	11960		3D8	Bio-musc-stau silicates of calc-silicate map unit as seen on Rich & Tay River minus "A" group. Minor andalusite porphy seen as well. This unit in core looks like 1C7 - alarmingly similar - raising question is 1C @ Faro $\equiv 3D??$ As 68PR2 3D or 1C???
L	11960	12300		3C0	Metabasite, prob. metamorphic; contact $11S_2$

Structural Log

Code	From		To		Feature	S/E	S ₁		S ₂		Description	
	Dip	Direct.	Dip	Direct.			Dip	Direct.	Dip	Direct.		
	10	14	16	20	22	24	26	28	32	34	38	
S				1190	S ₁ 2					50	195	
S				1500	S ₁ 2					70	195	
S				1750	S ₁ 2					60	195	
S				11010	S ₁ 2					60	195	
S				11250	S ₁ 2					75	195	
S				11510	S ₁ 2					75	195	
S				11750	S ₁ 2					55	195	
S				21010	S ₁ 2					75	195	
S				22250	S ₁ 2					80	195	
S				25100	S ₁ 2					75	195	
S				2750	S ₁ 2					80	195	
S				30100	S ₁ 2					50	195	
S				3250	S ₁ 2					60	195	
S				35100	S ₁ 2					60	195	
S				3750	S ₁ 2					90	195	
S				40100	S ₁ 2					45	195	
S				5680	S ₁ 2					60	195	
S				60110	S ₁ 2					60	195	
S				6250	S ₁ 2					85	195	
S				65100	S ₁ 2					75	195	
S				6750	S ₁ 2					65	195	
S				7000	S ₁ 2					80	195	
S				7250	S ₁ 2					75	195	
S				75100	S ₁ 2					80	195	
S				7750	S ₁ 2					80	195	
S				80100	S ₁ 2					75	195	
S				8250	S ₁ 2					85	195	
S				8500	S ₁ 2					70	195	
S				8750	S ₁ 2					70	195	
S				90100	S ₁ 2					75	195	
S				9250	S ₁ 2					70	195	
S				947	S ₁ 2					70	195	
S				975	S ₁ 2					85	195	
S				1000	S ₁ 2					55	195	
S				1025	S ₁ 2					75	195	
S				1032	S ₁ 2					60	195	

