

587 000mE

587 500 mE

6 905 000mN

588 000mE

588 500mE

1100

1125

1193.5

1150

84.315

580

500/500

1125

1075

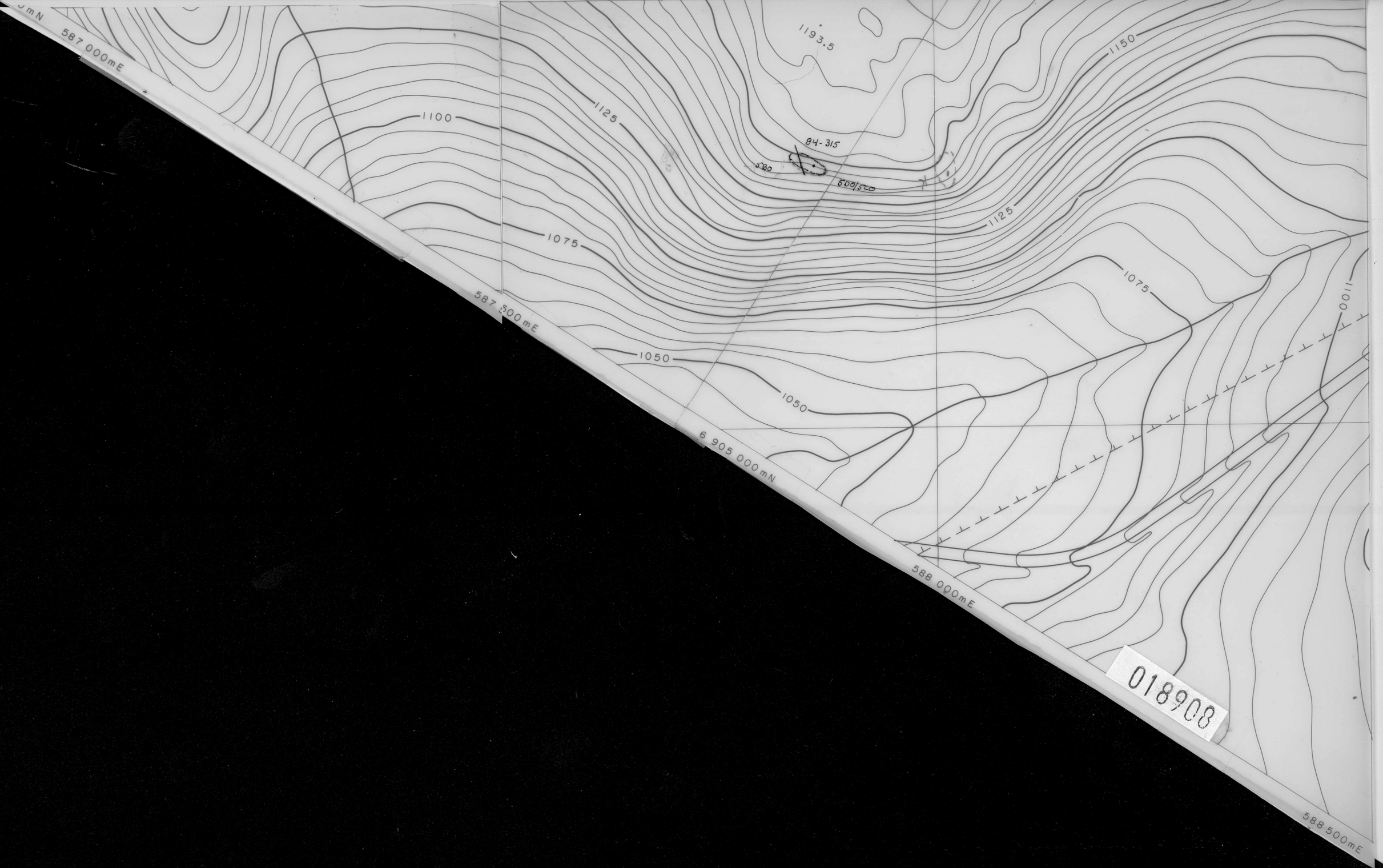
1075

1050

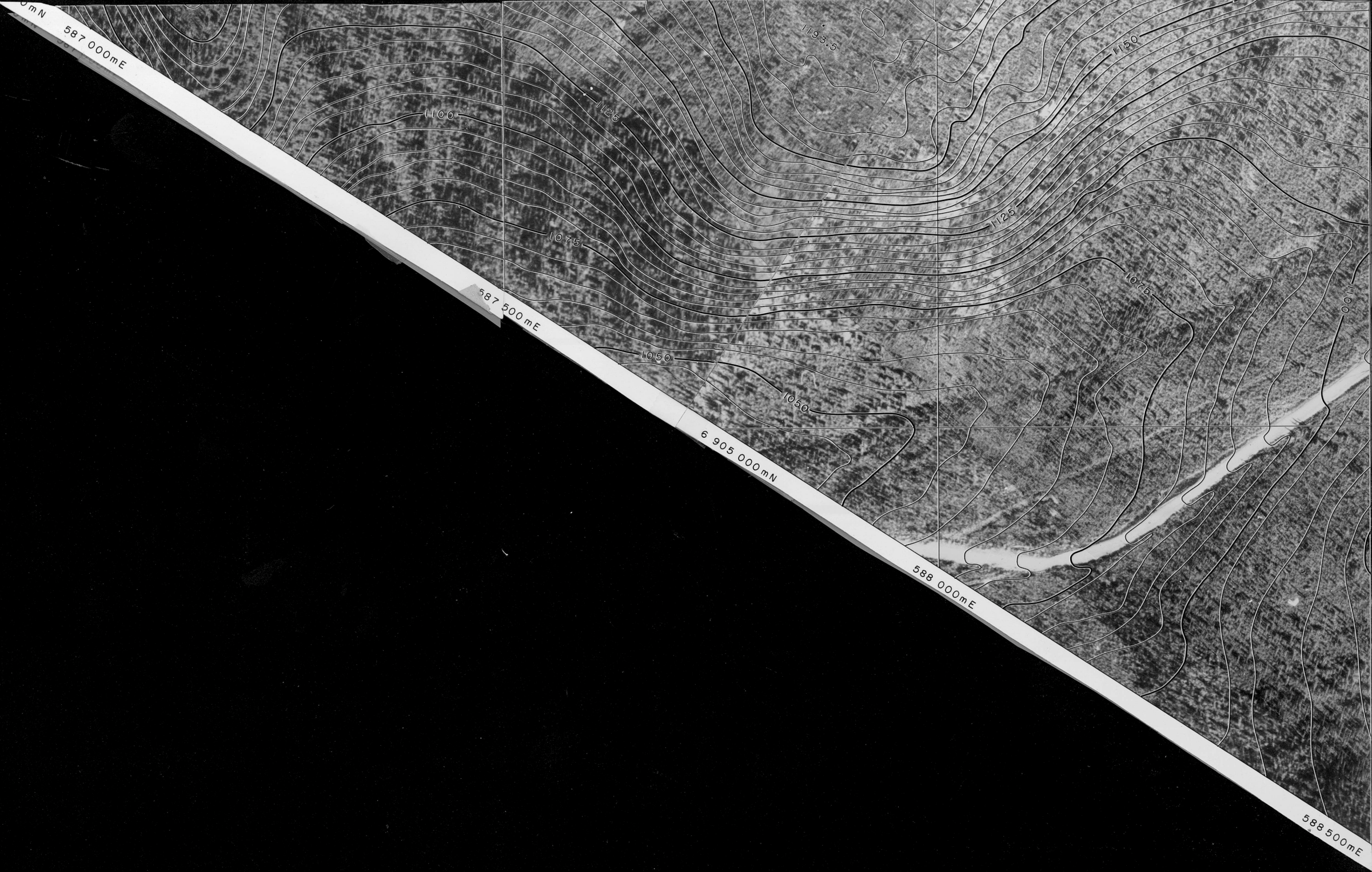
1050

1000

018908



018908



6 905 500 N

6 905 500 N



1: 5000
6 905 000 N
588 000 E

587 500 E

588 500 E