



4500  
3158

4000

No. 2/c

018946

3500

DG-19

2849  
2850

2844  
2845  
2846  
2847  
2848  
2849

2812

105 PM

2861  
2862

2859

2857

2858

2811

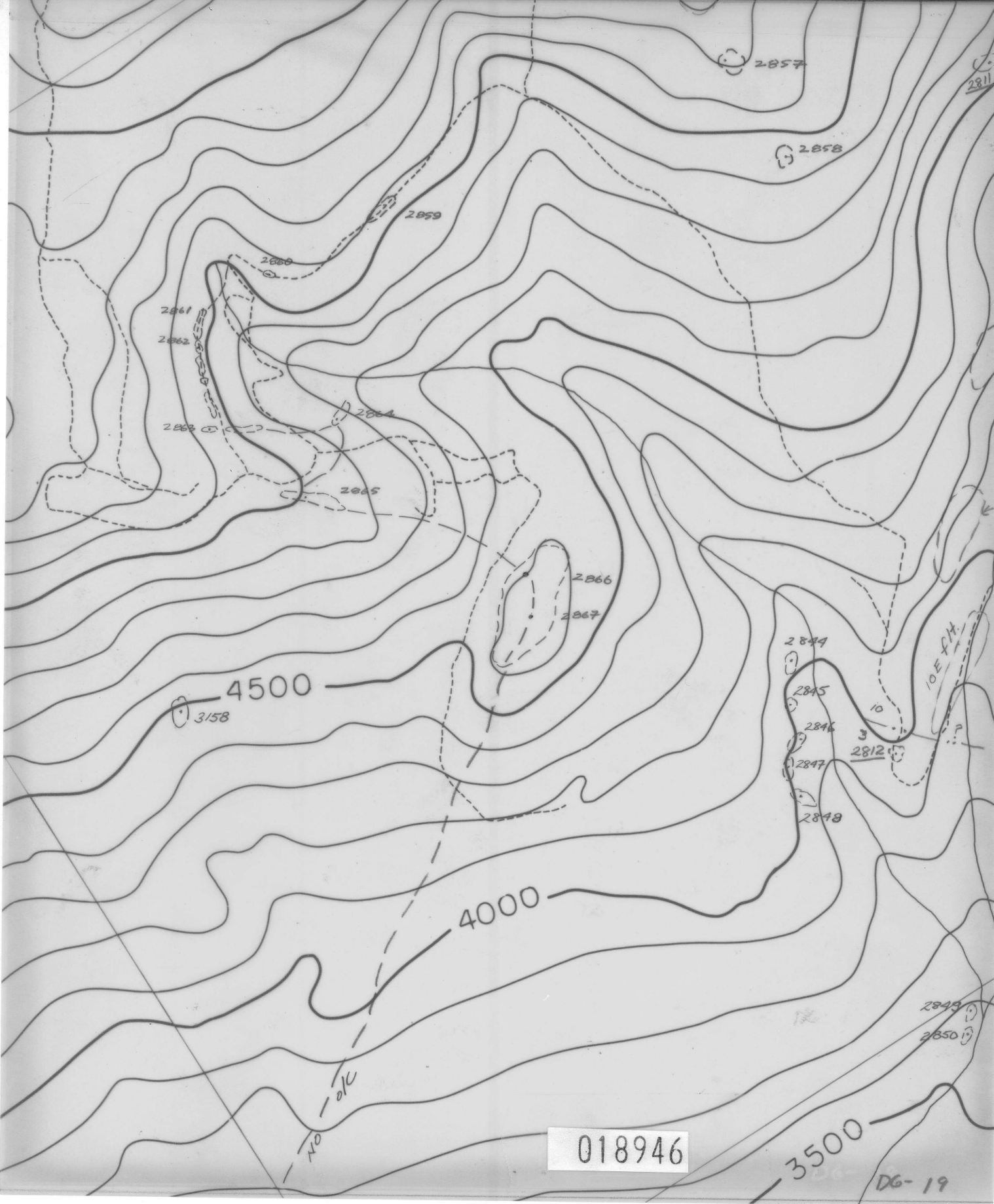
2860

2864

2865

2866

2867



018946

DG-19

A grayscale topographic map showing contour lines. The map features several prominent peaks and valleys. Three contour lines are labeled with their respective elevations: 4500, 4000, and 3500. The 4500 contour line is located in the upper left quadrant, the 4000 contour line is in the center, and the 3500 contour line is in the lower right quadrant. The contour lines are white and stand out against the dark, textured background of the map. The overall appearance is that of a technical drawing or a scan of a physical map.

4500

4000

3500

DG-19