

019054

Contents				320 LX Pacific Rainproof Contents			
Page		Page		Page		Page	
1	DDH-79X01-19X02	24	DDH-49	47	DDH-4	70	DDH-108
2	DDH-79X03	25	DDH-68	48	DDH-6	71	DDH-V-71-R
3	DDH-79X-02	26	DDH-75	49	Claim Post	72	DDH-V-72-R
4	DDH-79-Y-04	27	DDH-74	50	DDH-7	73	DDH-V-801
5	Dist 756-DY2	28	DDH-71	51	DDH-2	74	DDH-V-08A-R
6	Dist 756-DY2	29	DDH-109	52	DDH-5	75	DDH-V-101-R
7	DDH-79-X-04	30	DDH-92?	53	DDH-11&12	76	DDH-103
8	DDH-V-95-R	31	DDH-52	54	DDH-43	77	DDH-105
9	DDH-V47	32	DDH-96	55	DDH-80	78	DDH-79-X-10
10	DDH-V-94-R	33	DDH-40	56	DDH-120	79	DDH-79-X-09
11	DDH-V-85	34	DDH-97	57	DDH-84	80	DDH-79-X-11
12	DDH-96	35	DDH-44	58	DDH-125		
13	DDH-129	36	DDH-68	59	DDH-86		
14	DDH-64	37	DDH-23	60	DDH-V-114-R		
15	DDH-53	38	DDH-10	61	DDH-V-110-R		
16	DDH-40	39	DDH-15	62	DDH-V-123-R		
17	DDH-18	40	DDH-16	63	DDH-V-126-R		
18	DDH-46	41	DDH-140	64	page Join		
19	DDH-117	42	DDH-17	65	DDH-79-X-05		
20	DDH-50	43	DDH-25	66	DDH-79-X-07		
21	DDH-60	44	DDH-143	67	DDH-79-X-06		
22	DDH-66	45	DDH-27	68	DDH-V-055-R		
23	DDH-158	46	DDH-26	69	DDH-116		

DATE 1/29.  
 T - JOHN K.  
 N - JOHN K.  
 AD - STAN B.

VCR

Weather: clear & warm

T@ 756

Hole#1 90° 56' 24" 269° 04' 03"

Hole#1 90° 56' 28" 269° 04' 03"

Mean Vert  $\Delta$  = 90° 56' 11"

Dy#2 88° 44' 18" 271° 16' 15"

Dy#2 88° 44' 17" 271° 16' 16"

Mean Vert  $\Delta$  = 88° 44' 01"

HCR.

T@ 756

Dy#2 0° 00' 00"

Hole#1 338° 41' 54"

Hole#1 338° 41' 54"

Dy#2 0° 00' 01"

Mean HCR  $\Delta$  = 338° 41' 53"

Dy#2 180° 00' 00"

Hole#1 158° 41' 52"

Hole#1 158° 41' 52"

Dy#2 179° 59' 57"

Mean HCR  $\Delta$  = 338° 41' 53" Total  $\Delta$  = 338° 41' 53"

HI for 756 - 1469 mm

HI " 79x01 1570 mm

HI " 79x03 1560 mm

T@ 756 - HOLE#1 - SINGLE PRISM

SD HD  $\Delta$ H

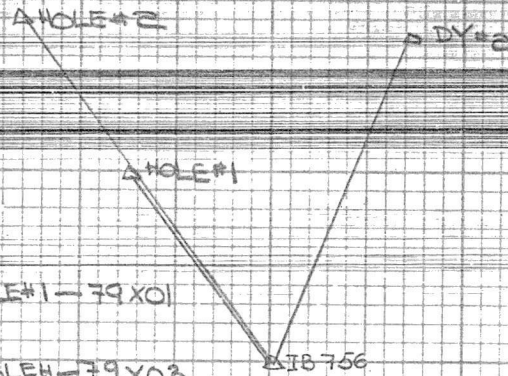
732.995	732.813	16.200
0.006	0.006	0.005
0.006	0.006	0.005
0.006	0.006	0.005

732.017	732.822	16.200
0.017	0.017	0.005
0.017	0.017	0.005
0.017	0.017	0.005

DOUBLE PRISM

732.017	732.822	16.200
0.017	0.017	0.005
0.017	0.017	0.005
0.017	0.017	0.005

$\bar{x}$  = 732.017     $\bar{x}$  = 732.822     $\bar{x}$  = 16.200



June 1st, 79  
 T & N - John Kuhner  
 Rod - Stans

STA	H.C.R.	
π@756		
DT#2	0° 00' 00"	338° 37' 08"
HOLE#2	338° 37' 08"	
HOLE#2	338° 37' 08"	338° 37' 08"
DT#2	0° 00' 06"	
π@756	Mean H.C.R. = 338° 37' 05"	
DT#2	180° 00' 00"	
HOLE#2	158° 37' 00"	
HOLE#2	158° 37' 00"	
DT#2	179° 59' 59"	
	Mean H.C.R. = 338° 37' 05" Total Mean = 338° 37' 05"	

VCR

π@756	F.L.	F.R.
Hole#2	90° 28' 50"	269° 31' 48"
Hole#2	90° 28' 47"	269° 31' 44"

Mean Vert.  $\angle$  = 90° 28' 31"

$= \frac{1}{2} (FL + 360^\circ - FR)$

π@756 - 79X03

Double Prism

S.D.	H.D.	ΔH
879.081	878.990	-7.394
879.017	878.986	"
879.020	878.989	"
879.001	878.990	"
879.000	878.989	"
$\bar{x} = 879.021$	$\bar{x} = 878.990$	$\bar{x} = -7.394$
$S = 0.001$	$S = 0.001$	

June 10<sup>th</sup> / 79  
 #11 - John K  
 Rod - STAUB

H.C.R.

sta

TA@DP2

DT#2 0° 00' 00"

7902 322° 35' 16"

7902 322° 35' 16"

DT#2 359° 59' 56"

Mean HCR 4's = 322° 35' 16"

TA@DP2

DT#2 180° 00' 00"

7902 142° 35' 10"

7902 142° 35' 10"

DT#2 179° 58' 56"

Mean HCR 3's = 322° 35' 12"

Total Mean HCR 4's = 322° 35' 14"

V.C.R.

TA@DP#2

7902 90° 43' 51" 269° 16' 57"

7902 90° 43' 41" 269° 16' 31"

Mean VCR 4's = 90° 43' 38"

HI for DP2 - 1448 mm

HI for 7902 - 1610 mm

320 LX Pacific Rainproof

83

TA@DP2 - 7902

single stem

SD

HD

ΔH

317.400

317.374

-4.062

317.399

317.373

"

317.400

317.374

"

317.400

317.374

"

317.401

317.375

"

317.400

317.374

"

$\bar{x} = 317.400$

$\bar{x} = 317.374$

-4.062

$S = \pm 0.001$

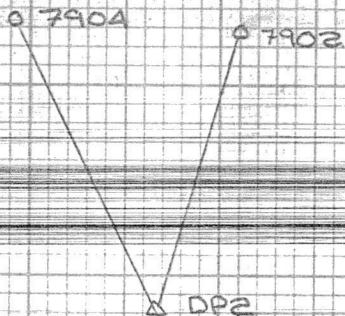
$S = \pm 0.001$

June 17/79.  
 UFA - Jamm K  
 R - Stamb

STA	HC.R	
T@DP2		
DT#2	0° 00' 00"	
7904	313° 01' 39"	
7904	313° 01' 39"	
DT#2	359° 59' 52"	
Mean HCR $\bar{x}$ = 313° 01' 43"		
DT#2	180° 00' 00"	
7904	133° 01' 52"	
7904	133° 01' 52"	
DT#2	180° 00' 03"	
Mean HCR $\bar{x}$ = 313° 01' 50"		
Total Mean HCR $\bar{x}$ = 313° 01' 47"		
VCR		
T@DP2		
7904	89° 42' 53"	270° 17' 24"
7904	89° 42' 54"	270° 17' 27"
Mean Vert $\bar{x}$ = 89° 42' 44"		
HI for 7904 - ?		

T@DP2 - 7904 Single Prism 234

SD	HD	$\Delta H$
360.374	360.370	1.765
360.374	360.370	1.765
360.374	360.370	1.765
360.374	360.370	1.765
360.374	360.370	1.765
360.374	360.370	1.765
360.374	360.370	1.765
360.374	360.370	1.765
360.374	360.370	1.765
$\bar{x}$ = 360.373	$\bar{x}$ = 360.369	1.765
$s$ = 1.001	$s$ = 1.005	



Date: June 8, 1979  
 T&N: J K  
 Rod: S B  
 Temp: 15°

Distance - Wild.

SD - N° 7

SD - N° 6

583.273

583.260

.277

.259

.270

.259

.278

.260

.273

.258

T@156

VCR

DY2 88° 44' 36"

271° 16' 48"

88° 44' 39"

271° 16' 40"

HI@156 1.423m

HI@DY2 1.565m

Distance = 583.682m = X

DY2

T@156

VCR  
#756

HP

<del>DYE</del>	<del>88° 45' 01"</del>	<del>271° 16' 18"</del>
DYE	88° 44' 24"	271° 17' 03"
DYE	88° 44' 27"	271° 17' 03"

SD

583.285  
 583.284  
 583.285  
 583.284  
 583.284

~~Σ = 583.284~~

HI @ DYE - 1.460  
 HI @ 756 - 1.298

June 6, 1979  
T&N - John K  
Rod - Stan B

Weather - clear  
Temp - 12°C

π@ DP2

	Hor. Cir. Read
Site DYE	0° 00' 00"
" 79x-04	313° 01' 48" (1st)
" DYE	313° 01' 48"
" 79x-04	266° 03' 21"
Plus	360° 00' 00"
	626° 03' 21" (Dble)
Mean HCR	313° 01' 40"

π@ DP2

	LF	RF
Site 79x-04	89° 43' 15"	270° 18' 00"
" 79x-04	89° 43' 27"	270° 18' 00"
Total Vert Mean	89° 43' 40"	

π@ DP2

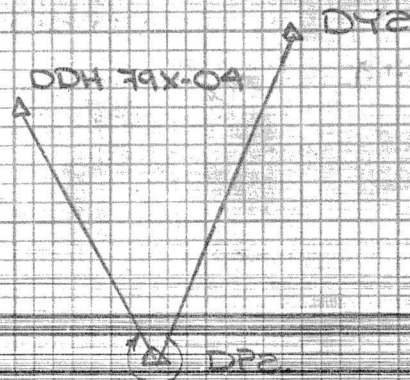
	Hor. Cir. Read
Site DYE	90° 00' 00"
79x-04	43° 01' 48" (1st)
DYE	43° 01' 48"
79x-04	356° 03' 21"
Plus	270° 00' 00"
	626° 03' 21" (Dble)
Mean HCR	313° 01' 40"

Slope Distance DP2 - 79x04

SD  
360.394  
360.397  
360.395  
360.395  
360.395

\* switch set @ 6  
for A.C. Laser

$n = 360.395$   $s = 1.001$   
Corrected SD = 360.407 m



HI @ DYE

HI @ DP2 1.372 m

HI @ 79x-04 1.073 m

Total Mean HCR 313° 01' 40"

June 7, 1979.  
 T & N - John Kuhne  
 Rod - Stan B.

Weather - sun & cloud.  
 Temp - 13°C - 11°C

π@ JK4

	Hor. Cir. Read.	
site JK1	0° 00' 00"	
" Hole1	61° 37' 21" (1st)	
" JK1	61° 37' 21"	
" Hole1	123° 14' 42"	
Plus	0° 00' 00"	
	123° 14' 42" (Dble)	
Mean HCR	61° 37' 21"	

π@ JK4

site JK1	90° 00' 00"		
" Hole1	151° 37' 18" (1st)		
" JK1	151° 37' 18"		
" Hole1	213° 14' 54"		
Plus	90° 00' 00"		
	203° 14' 54" (Dble)		
Mean HCR	61° 37' 21"	Total Mean HCR	61° 37' 24"

π@ JK4

	FL	FR
site Hole1	93° 52' 03"	266° 09' 18"
" Hole1	93° 52' 03"	266° 09' 27"
Total Mean Vert	93° 51' 00"	

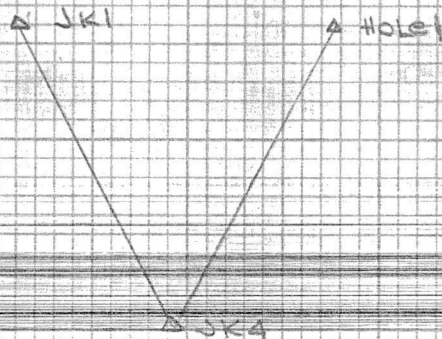
320 LX Pacific Rainproof

JK4 - Hole1 - single prism

SD  
 342.530  
 342.531  
 342.530  
 342.531  
 342.529  
 342.531

X = 342.530 S = 0.001

Corrected SD = 342.542 m



HI@JK4 - 1.347 m

HI@Hole1 - 1.660 m

HOLE1 - V95R

June 7, 1979 FEN - John K. Rod - Stan B		Weather - clear Temp - 14°C		39-9	
<u>TA</u>	<u>JK4</u>			Slope Distance JK4 - V47	
		Hor. Cir. Read		SD	
site	JK3	0° 20' 00"		328.349	
"	V47	13° 26' 00" (1st)		328.351	
"	JK3	13° 26' 00"		328.350	
"	V47	26° 51' 51"		328.361	
	Plus	0° 00' 00"		328.351	
		26° 51' 51" (Dble)		X = 328.350m S = ±0.001	
Mean H.C.R. $\bar{x}$		13° 25' 55"		Corrected SD = 328.362 m	
site	JK3	90° 00' 00"			
"	V47	103° 05' 45" (1st)			
"	JK3	103° 05' 45"			
"	V47	116° 51' 39"			
	Plus	90° 00' 00"			
		00° 51' 39" (Dble)			
Mean H.C.R. $\bar{x}$		13° 25' 49"	Total Mean H.C.R. $\bar{x}$		13° 25' 52"
<u>TA</u>	<u>JK4</u>				
		Vert. Cir. Read.			
site	V47	93° 56' 06"	266° 05' 33"	HI @ V47 - 1.490 m	
"	V47	93° 06' 09"	266° 05' 33"	HI @ JK4 - 1.350 m	
Mean Vert. $\bar{x}$		93° 55' 17"			

June 7, 1979  
TEN - John K.  
Red - Stan B.

Weather - Cloudy  
Windy  
Temp - 14°C

Page 11

7@JK4

Slope Distance JK4 - V35

Hor. Cir. Rd.

Site JK3 0° 00' 20"

" V35 2° 56' 15" (1st)

" JK3 2° 56' 15"

" V35 5° 52' 42"

Plus 0° 00' 00"

5° 52' 42" (Dble)

Mean HCR  $\downarrow$  2° 56' 21"

Site JK3 90° 00' 00"

" V35 92° 56' 12" (1st)

" JK3 92° 56' 12"

" V35 95° 52' 42"

Plus 90° 00' 00"

185° 52' 42" (Dble)

Mean HCR  $\downarrow$  2° 56' 21" Total Mean HCR  $\downarrow$  2° 56' 21"

7@JK4

Vert. Cir. Rd.

FL

FR

Site V35 94° 43' 03" 265° 18' 45"

" V35 94° 43' 00" 265° 18' 36"

Mean Vert.  $\downarrow$  94° 42' 11"

370 LX Pacific Rainproof

SD

310.888

310.891

310.891

310.891

310.890

310.889

310.890

310.888

310.890

$\bar{x} = 310.890$   $S = \pm 0.000$

Corrected SD = 310.901 m

HI @ V35 - 1.590 m

June 8, 1979.  
 T & N - John K.  
 Rod - Stan B.

Weather - clear  
 Temp 17°C  
 Press 882

Pg-12

Slope Distance JK4 - 96

T@JK4

		Hor. Cir. Rd.
Site JK3		0° 00' 00"
" 96		26° 51' 15" (1st)
" JK3		26° 51' 15"
" 96		53° 42' 30"
Plus		0° 00' 00"
		53° 42' 15" (Dble)

SD

372.290

372.291

372.289

372.291

372.291

372.290

$\bar{x} = 372.290\text{m}$   $S = 30.001\text{m}$

Mean Hor.  $\bar{x}$  26° 51' 15"

corrected SD = 372.305m

site JK3		90° 00' 00"
" 96		116° 51' 09" (1st)
" JK3		116° 51' 09"
" 96		143° 42' 15"
Plus		90° 00' 00"

233° 42' 15" (Dble)

Mean HCR  $\bar{x}$  26° 51' 15" Total Mean HCR  $\bar{x}$  26° 51' 11"

Vert. Cir. Rd.

T@JK4

		FL	FR
site 96		93° 46' 51"	266° 15' 06"
" 96		93° 46' 54"	266° 15' 09"

HI@JK4 - 1.570 m

HI@96 - 1.451 m

Mean Vert.  $\bar{x}$  93° 45' 52"

June 8, 1979.  
T&N - John K.  
Rod - Stan B

Temp - 17°  
Press 879

Fig-13

T@JK4

site	JK3	Hor. Cir. Rd.
"	129	0° 00' 00"
"	JK3	30° 15' 42" (1st)
"	129	30° 15' 42"
"	129	60° 31' 30"
Plus		0° 00' 00"

Mean HCR & 60° 31' 30" (Dble)  
30° 15' 45"

site	JK3	90° 00' 00"
"	129	120° 15' 39" (1st)
"	JK3	120° 15' 39"
"	129	150° 31' 15"
Plus		90° 00' 00"

240° 31' 15" (Dble)

Mean HCR & 30° 15' 37" Total Mean HCR & 30° 15' 41"

Vert. Cir. Rd.

T@JK4

site	129	FL	FR
"	129	93° 38' 06"	266° 23' 45"
Mean VCR &		93° 37' 08"	

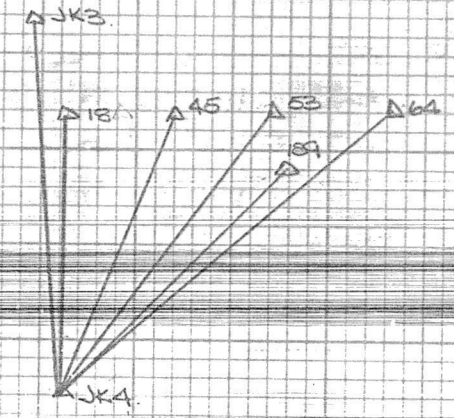
320 LX Pacific Rainproof

Slope Distance JK4-129

- SD.
- 389.465
  - 389.467
  - 389.467
  - 389.469
  - 389.468
  - 389.469

$\bar{x} = 389.467m$   $S = \pm 0.001m$

Corrected SD = 389.468m



HI@129 - 1.780m

June 8, 1979. TEN - John K Rod - Stan B.		Weather Temp 17C Press 879	
<u>TK@ JK4</u>			
		Hbr. Cir. Rd.	
Site	JK3	0° 00' 00"	
"	64	25° 24' 12"	(1st)
"	JK3	25° 24' 12"	
"	64	50° 47' 57"	
	Plus	0° 00' 00"	
		50° 47' 57"	(Dble)
Mean HCR &		25° 23' 58"	
Site	JK3	90° 00' 00"	
"	64	115° 23' 39"	(1st)
"	JK3	115° 23' 39"	
"	64	140° 47' 23"	
	Plus	90° 00' 00"	
		230° 47' 23"	(Dble)
Mean HCR &	25° 23' 41"	Total Mean H.C.R.	25° 23' 50"
<u>TK@ KA</u>			
		Vert. Cir. Rd.	
		FL	FR
Site	64	98° 46' 27"	267° 15' 54"
"	64	98° 46' 33"	267° 16' 00"
Mean Vert. &		98° 45' 16"	

320 LX Pacific Rainproof

Slope Distance JK4-64	
SD	
439.617	
439.618	
439.617	
439.615	
439.616	
439.617	
439.615	
$\bar{x} = 439.616 \text{ m}$	$S = \pm 0.001 \text{ m}$
Corrected SD = 439.634	
HI @ 64 = 1.780 m	

B-14

JUNE 8, 1979  
 T&N - John K.  
 Rod - Star B

Weather: clear/cloud  
 Temp 17°  
 Press 280

Fig

Slope Distance JKA - 53

π@ JKA

site	JK3	Hor. Cir. Rd.	
"	53	0° 00' 00"	(1st)
"	JK3	18° 17' 12"	
"	53	26° 34' 15"	

SD

- 408.413
- 408.414
- 408.415
- 408.414
- 408.412
- 408.418
- 408.413

Plus	0° 00' 00"	
	36° 34' 15" (Dbe)	
Mean HCR &	18° 17' 07"	

$\bar{x} = 408.413 \text{ m } S = \pm 0.001 \text{ m}$

Corrected SD = 408.429

site	JK3	90° 00' 00"	
"	53	108° 17' 00"	(1st)
"	JK3	108° 17' 00"	
"	53	126° 34' 09"	
Plus	90° 00' 00"		

216° 34' 09" (Dbe)

Mean HCR & 18° 17' 04" Total Mean HCR & 18° 17' 06"

π@ JKA

Vert. Cir. Rd.

FL FR

site	53	92° 52' 06"	267° 09' 01"
"	53	92° 52' 03"	267° 09' 57"

HI @ 53 = 1.860 m

Mean Vert & 92° 51' 05"

June 8, 1979  
 \* EN - John K.  
 Rod - Stan B.

Weather: clear/cloud  
 Temp 15  
 Press 879

Pg. 16

Slope Distance JK4-45

TO JK4

Site	JK3	Hor. Cir. Rd	
"	45	0° 00' 00"	
"	JK3	9° 57' 30" (1st)	
"	45	9° 57' 30"	
"	45	19° 55' 18"	

SD	385.100
	385.096
	385.100
	385.097
	385.096
	385.100

Plus	0° 00' 00"
	19° 55' 18" (Dble)
Mean HCR 4	9° 57' 39"

$\bar{X} = 385.099\text{m}$   $S = 0.002\text{m}$   
 Corrected SD = 385.114

Site JK3	90° 00' 00"
" 45	99° 57' 30" (1st)
" JK3	99° 57' 30"
" 45	109° 55' 15"
Plus	90° 00' 00"
	109° 55' 15" (Dble)

Mean HCR 4 99° 57' 37" Total Mean HCR 4 9° 57' 38"

<u>TO JK4</u>	Vert. Cir. Rd	
	FL	FR
site 45	92° 01' 57"	267° 10' 21"
" 45	92° 02' 03"	267° 10' 09"
Mean VCR 4	92° 00' 52"	

HI @ 45 - 1.700m

June 8, 1979.  
T&N - John Kuhn  
Rad - Stan B

Weather Observations  
Temp. 15C  
Tides 850

TO JK4

		Hor. Cir. Rd.
site	JK3	0° 00' 00"
"	18	0° 58' 09" (1st)
"	JK3	0° 58' 09"
"	18	1° 56' 45"

Plus 0° 00' 00"  
1° 56' 45" (Dde)

Mean HCR & 0° 58' 22"

site	JK3	90° 00' 00"
"	18	90° 58' 21" (1st)
"	JK3	90° 58' 21"
"	18	91° 56' 48"

Plus 90° 00' 00"  
181° 56' 48" (Dde)

Mean HCR & 0° 58' 24" Total Mean HCR & 0° 58' 23"

TO JK4

Vert. Cir. Rd.  
FL FR

site	18	92° 41' 08"	267° 20' 48"
"	18	92° 41' 03"	267° 00' 48"

Mean VCR & 92° 40' 08"

320 LX Pacific Rainproof

Slope Distance JK4-18

SD

374.144

374.144

374.140

374.148

374.145

374.146

374.146

$\bar{x} = 374.145m$   $s = 0.001m$

Corrected SD = 374.159

HI @ 18 = 1.590m

June 11, 1979  
 x & y - John Kuhic  
 ROD - Stan B.

Weather: part cloud  
 Temp 15°C  
 Press 876 hmb

Pg 18

π@ JKA

Slope Distance JK4-46

Site	JK3	Hor. Cir. Rd.	
"	46	0° 00' 00"	
"	JK3	14° 47' 45" (1st)	
"	46	14° 47' 45"	
"	46	29° 35' 12"	

SD

463.078

463.078

463.078

463.078

463.079

463.083

Plus	0° 00' 00"	
Mean HCR $\bar{x}$	29° 35' 12" (Dble)	
	14° 47' 36"	

$\bar{x} = 463.078$

Corrected SD = 463.097m

site	JK3	90° 00' 00"	
"	46	104° 47' 42" (1 <sup>st</sup> )	
"	JK3	104° 47' 42"	
"	46	119° 35' 09"	
Plus	90° 00' 00"		

209° 35' 09" (Dble)

Mean HCR  $\bar{x}$  14° 47' 34" Total Mean HCR  $\bar{x}$  14° 47' 35"

π@ JKA

Vert. Cir. Rd.

FL

FR

site	46	91° 55' 18"	268° 06' 30"
"	46	91° 55' 12"	268° 06' 36"

HI@46 - 1.440m

HI@JKA - 1.44m

Mean VCR  $\bar{x}$  91° 54' 21"

320 LX Pacific Rainproof

June 11, 1979  
 TEN - John Kuhre  
 Rod - Stan B.

Weather Part Cloud  
 Temp 13°C  
 Press 877 mmHg

pg-19

π@ JK4

		Hor. Cir. Rd.	
site	JK3	0° 00' 00"	
"	117	18° 11' 09"	(1st)
"	JK3	18° 11' 09"	
"	117	36° 22' 18"	
	Plus	0° 00' 00"	
		36° 22' 18"	(Dble)
Mean HCR $\bar{x}$		18° 11' 09"	

site	JK3	90° 00' 00"	
"	117	108° 11' 06"	(1st)
"	JK3	108° 11' 06"	
"	117	126° 22' 09"	
	Plus	90° 00' 00"	
		216° 22' 09"	(Dble)

Mean HCR  $\bar{x}$  18° 11' 04" Total Mean HCR  $\bar{x}$  18° 11' 07"

π@ JK4

Vert. Cir. Rd.

		FL	FR
site	117	92° 13' 48"	267° 48' 00"
"	117	92° 13' 42"	267° 47' 54"
Mean VCR $\bar{x}$		92° 12' 54"	

320 LX Pacific Rainproof

Slope Distance JK4-117

SD

477.071  
 477.072  
 477.074  
 477.073  
 477.071  
 477.073  
 477.073

$\bar{x} = 477.072 \text{ m}$   $S = 0.001$

Corrected SD = 477.091 m

HI @ 117 - 1600 m

June 11, 1979.  
 XEN - John Kuhne  
 Rod - Stan B.

Weather cover-cast  
 Temp 13°C  
 Press 877 mmHg

Pg 20

X@JK4

Site	JK3	Hor. Cir. Rd.	
	JK3	0° 00' 00"	
"	50	7° 28' 57" (1st)	
"	JK3	7° 28' 57"	
"	50	14° 57' 51"	
	Plus	0° 00' 00"	

Slope Distance JK4-50

SD

442.045  
 442.047  
 442.045  
 442.044  
 442.045  
 442.045  
 442.045

		14° 57' 51" (Dble)	
Mean HCR $\bar{x}$		7° 28' 55"	

$\bar{x} = 442.045$      $S = \pm 0.001$

Corrected SD = 442.062 m

site	JK3	90° 00' 00"	
"	50	97° 28' 54" (1st)	
"	JK3	97° 28' 54"	
"	50	104° 57' 45"	
	Plus	90° 00' 00"	

194° 57' 45" (Dble)

Mean HCR  $\bar{x}$  7° 28' 55"    Total Mean HCR  $\bar{x}$  7° 28' 55"

X@JK4

Vert. Cir. Rd.

FL      FR

Site	50	91° 56' 27"	268° 04' 54"
"	50	91° 56' 27"	268° 04' 54"

HI @ 50 — 1.800 m

Mean VCR  $\bar{x}$  91° 55' 46"

320 LX Pacific Rainproof

June 11, 1979.		Weather		over cast
T&N - John K.		Temp	3	
Rod - Stan B		Press	875 mm b	
<u>T@JK4</u>				
		Hor. Cir. Rd.		
site	JK3	0° 00' 00"		
"	60	359° 35' 54" (1st)		
"	JK3	359° 35' 54"		
"	60	359° 07' 48"		
	Plus	360° 00' 00"		
		719° 07' 48" (Dble)		
Mean HCR Δ		359° 33' 54"		
site	JK3	90° 00' 00"		
"	60	89° 34' 00" (1st)		
"	JK3	89° 34' 00"		
"	60	89° 07' 51"		
	Plus	630° 00' 00"		
		719° 07' 51" (Dble)		
Mean HCR Δ	259° 33' 55"	Total Mean HCR Δ	259° 33' 55"	
<u>T@JK4</u>				
		Vert. Cir. Rd.		
		FL	FR	
site	60	91° 52' 54"	268° 08' 09"	
"	60	91° 52' 54"	268° 08' 12"	
Mean Vert Δ		91° 52' 22"		
320 LX Pacific Rainproof				

Slope Distance JK4-60

SD

- 429.180
- 429.76
- 429.177
- 429.177
- 429.180
- 429.179
- 429.180

$\bar{x} = 429.178 \quad s^2 = 0.006$

Corrected SD = 429.195 m

HT @ 60 = 1.710 m

June 11, 1979. π EN - John K. Rod - Stamb.		Weather	over - cast
		Temp	15°C
		Press.	875 mm b
<u>π@ JKA</u>			
		Hbr. Cir. Rd.	
Site	JK3	0° 00' 00"	
"	66	351° 18' 33" (1 <sup>st</sup> )	
"	JK3	351° 18' 33"	
"	66	342° 37' 12"	
	Plus	360° 00' 00"	
		702° 37' 12" (Dble)	
Mean HCR $\bar{x}$		351° 18' 36"	
site	JK3	90° 00' 00"	
"	66	81° 18' 36" (1 <sup>st</sup> )	
"	JK3	81° 18' 36"	
"	66	72° 37' 12"	
	Plus	630° 00' 00"	
		(Dble)	
Mean HCR $\bar{x}$	351° 18' 36"	Total Mean HCR $\bar{x}$	351° 18' 36"
<u>π@ JKA</u>		Vert. Cir. Rd.	
		FL	FR
site	66	91° 53' 15"	268° 08' 15"
"	66	91° 53' 18"	268° 08' 15"
Mean VCR $\bar{x}$		91° 52' 31"	

320 LX Pacific Rainproof

Slope Distance JKA-66

SD

- 425.361
- 425.362
- 425.362
- 425.362
- 425.362
- 425.363

$\bar{x} = 425.362$   $S = \pm 0.001$

Corrected SD = 425.379 m

HI @ 66 = 1.600 m

June 11, 1979.  
 T & N - John K  
 Rod - Stan B.

Weather  
 Temp 15°C  
 Press 874 mmb

Pg 82

T@JK4

Site	JK3	Hor. Cir. Rd.	
	JK3	0° 00' 00"	
"	158	6° 23' 27" (1st)	
"	JK3	6° 23' 27"	
"	158	12° 46' 54"	
	Plus	0° 00' 00"	
		12° 46' 54" (Dble)	
Mean HCR $\bar{x}$		6° 23' 27"	
site	JK3	90° 00' 00"	
"	158	96° 23' 27" (1st)	
"	JK3	96° 23' 27"	
"	158	102° 46' 51"	
	Plus	90° 00' 00"	
		198° 46' 51" (Dble)	

Slope Distance JKA → DDH-158

SD

471.699
471.692
471.701
471.695
471.699
471.699
471.698
471.698

$\bar{x} = 471.698$      $S = \pm 0.003$   
 Corrected SD = 471.718 m

Mean HCR  $\bar{x}$  6° 23' 25" Total Mean HCR  $\bar{x}$  6° 23' 26"

T@JK4

Site	158	Vert. Cir. Rd.	FL	FR
site	158	91° 28' 51"	268° 32' 57"	
"	158	91° 28' 57"	268° 32' 54"	
Mean VCRA		91° 27' 59"		

HI @ 158 — 1.630 m

June 11, 1979  
 T&N - John K.  
 Rod - Stan B.

Weather Part sunny  
 Temp 15°C  
 Press 874 mmHg

Pg-24

π@JK4

site	JK3	Hor. Cir. Rd.	
	JK3	0° 00' 00"	
"	49	5° 26' 15" (1st)	
"	JK3	5° 26' 15"	
"	49	10° 53' 27"	
	Plus	0° 00' 00"	

10° 52' 27" (Dble)

Mean HCR4 5° 26' 13"

site	JK3	90° 00' 00"
"	49	95° 26' 15" (1st)
"	JK3	95° 26' 15"
"	49	100° 52' 24"
	Plus	90° 00' 00"

190° 52' 24" (Dble)

Mean HCR4 5° 26' 13" Total Mean HCR4 5° 26' 13"

π@JK4

Vert. Cir. Rd.

FL. FR.

site	49	91° 05' 45"	268° 56' 15"
"	49	91° 05' 45"	268° 56' 18"

Mean VCR4 91° 04' 44"

320 LX Pacific Rainproof

Slope Distance JK4 → DDH-49

SD

501.095

501.095

501.097

501.096

501.097

501.097

501.096

$\bar{x} = 501.096 \quad s = \pm 0.001$

Corrected SD = 501.117 m

HI @ 49 — 1320 m

June 11, 1979.  
7:45 AM + John K  
Red - Stan B.

Weather: partly sunny  
Temp. 17°C (63°)  
Press. 878 mmb

Pg. 25

T@JKA

site	JK3	Hor. Cir. Rd.
"	63	0° 00' 00"
"	JK3	358° 33' 27" (1 <sup>st</sup> )
"	JK3	358° 33' 27"
"	63	357° 06' 57"
	Plus	360° 00' 00"

Slope	Distance JKA - 63
SD	
489.920	
489.922	
489.922	
489.922	
489.925	
489.922	
489.922	

Mean HCR 4 717° 06' 57" (Dble)  
358° 33' 28"

site	JK3	90° 00' 00"
"	63	88° 33' 30" (1 <sup>st</sup> )
"	JK3	88° 33' 30"
"	63	87° 06' 54"
	Plus	630° 00' 00"
		717° 06' 57" (Dble)

$\bar{x} = 489.922$   $S = 3.001$   
Corrected SD = 489.944

Mean HCR ~~358° 33' 27"~~ (Dble) Mean HCR 358° 33' 27"

T@JKA

site	63	Vert. Cir. Rd.	FL	FR
site	63	91° 00' 09"	269° 01' 42"	
"	63	91° 00' 12"	269° 01' 42"	
Mean VCR 4		90° 59' 14"		

HI@ 63 - 1.800m

June 18, 1979.  
 T & N - John K.  
 Rod - Stan B.

Weather partly sunny  
 Temp 7°C  
 Press 876 mm Hg

FS-26

T@IN2

Slope Distance IN2-75

site	INI	Hor. Cir. Rd.
"	75	0° 00' 00"
"	INI	246° 12' 57" (1st)
"	75	246° 12' 57"
"	75	132° 25' 51"

SD

- 111.144
- 111.145
- 111.145
- 111.146
- 111.146
- 111.146
- 111.145
- 111.146

Plus		360° 00' 00"
		498° 05' 51" (Dbe)
Mean <sub>(n)</sub> HCR	↘	246° 12' 55"

$\bar{x} = 111.145 \text{ m. } s = 10.001$   
 Corrected SD = 111.149 m

Remarks

site	INI	90° 00' 00"
"	75	336° 12' 57" (1st)
"	INI	336° 12' 57"
"	75	222° 25' 45"
Plus		450° 00' 00"

		272° 25' 41" (Dbe)
Mean <sub>(n)</sub> HCR	↘	246° 12' 52"
Total Mean HCR	↘	246° 12' 53"

T@IN2

Vert. Cir. Rd.

site	FL	FR	
75	95° 11' 33"	264° 49' 15"	
"	75	95° 11' 42"	264° 49' 03"
Mean VCR	↘	95° 11' 14"	

HI@75 - 1.730 m.

HI@IN2 - 1.44 m

June 13, 1979.  
 XEN - John K.  
 ROD - STAN B.  
 weather partly sunny  
 Temp 7°C  
 Press 876 mmb

B-27

X @ IN2		Hor. Cir. Reading	
site	INI	0° 00' 00"	
"	74	273° 32' 27" (1st)	
"	INI	273° 32' 27"	
"	74	187° 04' 39"	

Slope Distance IN2-74

SD

- 67.117
- 67.118
- 67.116
- 67.117
- 67.116
- 67.116
- 67.117

Plus 360° 00' 00"  
 547° 04' 39" (Dble)  
 Mean HCR  $\bar{x}$  273° 32' 20"

$\bar{x}$  = 67.117 m S ± 0.001  
 Corrected SD = 67.119 m

site	INI	90° 00' 00"	
"	74	3° 32' 24" (1st)	
"	INI	3° 32' 24"	
"	74	277° 04' 48"	
Plus		400° 00' 00"	

Remarks

707° 04' 48" (Dble)  
 Mean<sub>(2)</sub> HCR  $\bar{x}$  273° 32' 24"  
 Total Mean HCR  $\bar{x}$  273° 32' 23"

X @ IN2		Vert. Cir. Reading	
		FL	FR
site	74	97° 25' 54"	262 35' 09"
"	74	97° 25' 51"	262 35' 09"
Mean VCR $\bar{x}$		97° 25' 22"	

HI @ 74 - 1.40 m

June 13, 1979  
 \*EN - John K.  
 Red - Stan B.

Weather partly sunny  
 Temp 10°C  
 Press. 875 mmHg

Fig. 22

TO IN2

		Hor. Cir. Rding.	
Site	INI	0° 00' 00"	
"	71	290° 21' 03"	(1st)
"	INI	290° 21' 03"	
"	71	220° 41' 57"	
	Plus	360° 00' 00"	

Slope Distance IN2-71

SD  
 123.516  
 123.517  
 123.515  
 123.516  
 123.515  
 123.515

Mean HCR  $\bar{x}$  580° 41' 57" (Dble)  
 690° 00' 58"

$\bar{x}$  - 123.516 m  $\pm$  0.001  
 Corrected SD - 123.500 m

Site	INI	90° 00' 00"	
"	71	20° 21' 09"	(1st)
"	INI	00° 21' 09"	
"	71	310° 42' 09"	
	Plus	450° 00' 00"	

Remarks.

Back-sighting IN1, Image through scope is very blurred.

760° 42' 09" (Dble)

Mean HCR  $\bar{x}$  290° 21' 03"  
 Total Mean HCR  $\bar{x}$  290° 21' 01"

TO Vert. Cir. Rding.  
 FL FR

Site	71	91° 53' 48"	268° 07' 45"
"	71	91° 53' 51"	268° 07' 57"
Mean VCR $\bar{x}$		91° 53' 59"	

HI @ 71 - 1.600 m  
 HI @ IN2 - 1.43 m

June 13, 1979.  
 T & N - John K.  
 Rod - Stan B.

Weather partly sunny  
 Temp 9°C  
 Press 876 mmb

Pg. 29

π@ IN2

Slope Distance IN2 - 109

site	INI	Hor. Cir. Rding.
		0° 00' 00"
"	109	277° 22' 30" (1st)
"	INI	277° 22' 30"
"	109	194° 44' 48" <sup>31"</sup>
	Plus	360° 00' 00"
		554° 44' 51" (Dble)
Mean (w) HCR $\bar{x}$		277° 22' 26"

SD
134.549
134.551
134.550
134.549
134.549
134.550

$\bar{x} = 134.550\text{m}$   $s = \pm 0.001$   
 Corrected SD = 134.555m

site	INI	Hor. Cir. Rding.
		90° 00' 00"
"	109	7° 22' 24" (1st)
"	INI	7° 22' 24"
"	109	284° 44' 48"
	Plus	450° 00' 00"
		734° 44' 48" (Dble)
Mean (w) HCR $\bar{x}$		277° 22' 24"
Total Mean HCR $\bar{x}$		277° 22' 25"

Remarks

π@ IN2

site	INI	Vert. Cir. Rding.
		FL FR
109		93° 34' 42" 266° 26' 27"
"	109	93° 34' 42" 266° 06' 33"
Mean VCR $\bar{x}$		93° 34' 06"

HI@109 - 1.65 m

June 13 1979  
 TEN - John K.  
 Rod - Stan B.

Weather partly sunny  
 Temp. 9°C  
 Press: 876mmHg

Pg-20

⊗@INA

Slope Distance INE - 92

Site	INI	Hor. Cir. Reading
"	92	0° 00' 00"
"	INI	266° 38' 15" (1st)
"	92	266° 38' 15"
"	92	173° 16' 27"
	Plus	260° 00' 00"
		523° 16' 27" (Dble)
Mean (w) HCR	⊗	266° 38' 13"

SD  
 151.823  
 151.822  
 151.822  
 151.823  
 151.822  
 151.822

$\bar{x} = 151.822m$   $s = \pm 0.001$   
 Corrected SD = 151.827m

site	INI	356° 38' 11"
"	92	356° 38' 12" (1st)
"	INI	356° 38' 12"
"	92	263° 16' 24"
	Plus	450° 00' 00"
		713° 16' 24" (Dble)

Remarks

Mean (w) HCR ⊗ 366° 38' 12"  
 Total Mean HCR ⊗ 366° 38' 12"

⊗@INA

Vert. Cir Reading  
 FL FR

HI@ 92 = 1.700m

site	92	95° 01' 39"	264° 59' 51"
"	92	95° 01' 36"	264° 59' 54"
Mean VCR	⊗	95° 00' 52"	

June 1979.  
 T&N - John K.  
 Rod - Stan B.

Weather partly cloudy  
 Temp 16°C  
 Press 880

Pg. 21

T@JK2

Slope Distance JK2-52

Site	JK3	Hor. Cir. Rding.	
"	52	0° 00' 00"	(1st)
"	JK3	357° 48' 06"	
"	52	355° 35' 54"	
	Plus	360° 00' 00"	

SD
<del>564.101</del>
564.096
564.100
564.101
564.102
564.101
564.100

Mean<sub>(1)</sub> HCR  $\bar{x}$  357° 47' 57" (Dble)

$\bar{x} = 564.100m$   $S = \pm 0.002$   
 Corrected SD = 564.119m

Site	JK3	90° 00' 00"	
"	52	87° 47' 57"	(1st)
"	JK3	87° 47' 57"	
"	52	85° 35' 48"	
	Plus	630° 00' 00"	

Remarks

710 35' 48" (Dble)

Mean<sub>(2)</sub> HCR  $\bar{x}$  357° 47' 54"

Total Mean HCR  $\bar{x}$  357° 47' 56"

V@JK2

Vert. Cir. Rding.

site	52	FL.	FR.
"	52	90° 08' 39"	869° 52' 12"
"	52	90° 08' 45"	869° 53' 30"
Mean VCR $\bar{x}$		90° 07' 33"	

HI@ 52 - 1.780 m  
 HI@ JK2 - 1.54 m

June 15, 1979  
 \* FN - John K  
 Rod - Stan B

Weather: partly sunny  
 Temp. 10°C  
 Press. 880 mmb

Pg. 32

π@JK2

Slope Distance JK2-96

		Hor. Cir. Reading	
site	JK3	0° 00' 00"	
"	96	355° 09' 30" (1 <sup>st</sup> )	
"	JK3	355° 09' 30"	
"	96	350° 18' 54"	
Plus		360° 00' 00"	
		710° 18' 54" (Dble)	
Mean HCR Δ		355° 09' 27"	

SD
548.216
548.217
548.217
548.216
548.216
548.217
548.217
548.217
Σ 548.217
Σ = 70.001
Corrected SD = 548.236 m

site	JK3	90° 00' 00"	
"	96	85° 09' 36" (1 <sup>st</sup> )	
"	JK3	85° 09' 36"	
"	96	80° 19' 09"	
Plus		630° 00' 00"	
		710° 19' 09" (Dble)	

Remarks:

Mean HCR Δ 355° 09' 34"  
 Total Mean HCR Δ 355° 09' 31"

π@JK2

Vert. Cir. Rd.

HI @ 86 — 1.700m

		FL.	FR.
site	96	90° 45' 09"	269° 16' 15"
"	96	90° 45' 09"	269° 16' 12"
Mean VCR Δ		90° 44' 38"	

320 LX Pacific Rainproof

June 15, 1979.  
 T&N - John K.  
 Red-stan B.

Weather  
 Temp. 11°C  
 Press 879 mmb

Rg-23

T@JK2		Hor. Cir. Rding.	
site	JK3	0° 00' 00"	
"	40	252° 12' 27"	(1st)
"	JK3	352° 12' 27"	
"	40	244° 28' 51"	
	Plus	360° 00' 00"	
		704° 24' 51"	(Dble)
Mean (1) HCR $\bar{x}$		352° 12' 25"	
site	JK3	90° 00' 00"	
"	40	82° 12' 24"	(1st)
"	JK3	82° 12' 24"	
"	40	74° 24' 39"	
	Plus	630° 00' 00"	
		704° 24' 39"	(Dble)
Mean (2) HCR $\bar{x}$		352° 12' 19"	
Total Mean HCR $\bar{x}$		352° 12' 22"	

T@JK2		Vert. Cir. Rding.	
		FL.	FR.
site	40	91° 24' 48"	668° 36' 54"
"	40	91° 24' 45"	568° 36' 57"
Mean VCR $\bar{x}$		91° 23' 56"	

320 LX Pacific Rainproof

Slope Distance JK2-40

SD

- 534.606
- 534.609
- 534.610
- 534.608
- 534.608
- 534.608
- 534.607
- 534.608

$\bar{x} = 534.608 \text{ m}$ ,  $S = \pm 0.001$   
 Corrected SD = 534.627 m

Remarks

HI @ 40 - 1.508 m

June 1979.  
T&N - John K.  
Rod - Stan B.

Weather Part sunny  
Temp 11°C  
Press 879 mmHg

Pg. 2A

T@JK2

Slope Distance JK2-97

		Hor. Cir. Rdng.	
site	JK3	0° 00' 00"	
"	97	0° 29' 57"	(1st)
"	JK3	0° 29' 57"	
"	97	0° 59' 42"	
	Plus	0° 00' 00"	
		0° 59' 42"	(Dble)

SD  
578.332  
578.332  
578.332  
578.331  
578.331  
578.331  
578.332

Mean HCR ↓

0° 29' 51"

$\bar{x} = 578.332 \text{ m} \pm 0.001$

Corrected SD = 578.353 m

site	JK3	90° 00' 00"	
"	97	90° 30' 00"	(1st)
"	JK3	90° 30' 00"	
"	97	90° 59' 47"	
	Plus	90° 00' 00"	
		180° 59' 47"	(Dble)

Remarks

Mean HCR ↓

0° 29' 52"

Total Mean HCR ↓

0° 29' 52"

T@JK2

Vert. Cir. Rdng.

FL. FR.

site	97	89° 47' 03"	270° 14' 18"
"	97	89° 47' 03"	270° 14' 21"

HI@ 97 — 1.240 m

Mean VCR ↓

89° 46' 22"

320 LX Pacific Rainproof

June 16, 1979. π & N - John K. Rod - Stamm B		Weather Temp Press.	Partly sunny 11°C 879 mmb	Pg-26	
π@JK2		Slope Distance JK2-44			
		Horo. Cir. Rding.			SD
Site	JK3	0° 00' 00"			510.690
"	44	1° 17' 15" (1st)			510.689
"	JK3	1° 17' 15"			510.690
"	44	2° 34' 30"			510.689
	Plus	0° 00' 00"			510.691
		2° 34' 30" (Dble)			510.689
					510.689
Mean (w) HCR Δ		1° 17' 15"			$\bar{x} = 510.690$ $s = \pm 0.001$
					corrected SD = 510.708 m
Site	JK3	90° 00' 00"			Remarks
"	44	91° 17' 12" (1st)			
"	JK3	91° 17' 12"			
"	44	92° 34' 24"			
	Plus	90° 00' 00"			
		182° 54' 24" (Dble)			
Mean (w) HCR Δ		1° 17' 12"			
Total Mean HCR Δ		1° 17' 13"			
π@JK2		Vert. Cir. Rding.			
		FL.	FR.		
Site	44	90° 46' 57"	269° 14' 21"		
"	44	90° 47' 03"	269° 14' 24"		
Mean VCR Δ		90° 46' 19"			HI @ 44 — 1.610 m

June 15, 1979  
 T&N - John Kuhner  
 Rod - Stan B

Weather  
 Temp 11°C  
 Press 880 mmHg

Ry-26

T@JK2

Slope Distance Jk2-68

Site	JK3	Hor. Cir. Rding.	
	JK3	0° 00' 00"	
"	68	5° 54' 27"	(1st)
"	JK3	5° 54' 27"	
"	68	11° 49' 03"	
	Plus	0° 00' 00"	
		11° 49' 03"	(Dble)
Mean(1) HCR Δ		5° 54' 27"	

SD  
 550.747  
 550.747  
 550.748  
 550.747  
 550.749  
 550.741

$\bar{x}$  = 550.748m S = 10.002  
 Corrected SD = 550.768m

Site	JK3	90° 00' 00"	
"	68	95° 54' 30"	(1st)
"	JK3	95° 54' 30"	
"	68	101° 48' 54"	
	Plus	90° 00' 00"	
		191° 48' 54"	(Dble)

Remarks

Mean(2) HCR Δ 5° 54' 27"  
 Total Mean HCR Δ 5° 54' 29"

T@JK2

Vert. Cir. Rd:

Site	68	FL.	F.R.
Site	68	89° 43' 57"	270° 18' 21"
"	68	89° 43' 57"	270° 18' 13"
Mean VCR Δ		89° 43' 49"	

HI@68 - 1.630m

June 1979  
 T&N - John K.  
 Rod - Stan B

Weather  
 Temp 11°C  
 Press. 875mmHg  
 Part sun

T@IN4

Site	JK3	Hor. Cir. Rd.	
		0° 00' 00"	
"	33	175° 40' 36"	(1st)
"	JK3	175° 40' 36"	
"	33	351° 21' 24"	
Plus		360° 00' 00"	

Slope Distance IN4-33

SD

- 65.179
- 65.179
- 65.180
- 65.179
- 65.179
- 65.179

Mean (1) HCRΔ 711° 2' 24" (Dble)  
 355° 40' 48"

$\bar{x} = 65.179$  m  $S = \pm 0.0004$   
 Corrected SD = 65.181m

Site	JK3	90° 00' 00"	
"	33	266° 40' 33"	(1st)
"	JK3	266° 40' 33"	
"	33	81° 21' 21"	
		711° 21' 21"	(Dble)

Remarks

Mean (2) HCRΔ 355° 40' 40"  
 Total Mean HCRΔ 355° 40' 41"

T@IN4

Site	JK3	Vert. Cir. Rd.	FL.	FR.
Site	33	103° 23' 00"	256° 38' 30"	
"	33	103° 23' 03"	256° 38' 35"	
Mean VCRΔ		103° 22' 15"		

HI @ 33 — 1.600m  
 HI @ IN4 — 1.49 m

June 18, 1979.  
 T & N - John K.  
 Rod - Stan B.

Weather cloudy  
 Temp 8°C  
 Press 876 mmb

Pg 28

T@IN4

Slope Distance IN4-10

site	JK3	Hor. Cir. Rding.
		0° 00' 00"
"	10	149° 26' 24" (1°)
"	JK3	149° 26' 24"
"	10	298° 52' 54"
	Plus	0° 00' 00"
		298° 52' 54" (Dble)

SD  
 113.830  
~~113.829~~  
 113.830  
~~113.829~~  
 113.830  
~~113.829~~  
 113.830

Mean (2) HCR Δ 149° 26' 27"

$\bar{x} = 113.830 \text{ m}$   $S = \pm 0.001$   
 Corrected SD = 113.834 m.

site	JK3	90° 00' 00"
"	10	239° 26' 24" (1°)
"	JK3	239° 26' 24"
"	10	298° 52' 54"
	Plus	270° 00' 00"
		298° 52' 54" (Dble)

Mean (2) HCR Δ 149° 26' 27"

Total Mean HCR Δ 149° 26' 27"

T@IN4

Vert. Cir. Rding

FL.

FR.

HI @ 10 - 1.63 m

site	10	97° 59' 30"	265° 01' 48"
"	10	97° 59' 33"	262° 01' 48"
Mean VCR Δ		97° 58' 53"	

June 18979.  
 T&N - John K.  
 Rod - Stan B.

Weather cloudy  
 Temp. 9°C  
 Press. 876 mmb

Pg. 29

T@IN4

Slope Distance IN4-15

		Hor. Cir. Rding.	
Site	JK3	0° 00' 00"	
"	15	182° 50' 33"	(1st)
"	JK3	182° 50' 33"	
"	15	5° 41' 18"	
	Plus	360° 00' 00"	
		365° 41' 18"	(Dble)
Mean (n) HCR4		180° 50' 39"	

SD  
 127.229  
 127.227  
 127.228  
 127.227  
 127.228  
 127.228  
 127.229

$\bar{x} = 127.228 \text{ m } s = \pm 0.001$   
 Corrected SD = 124.232 m

Site	JK3	90° 00' 00"	
"	15	272° 50' 30"	(1st)
"	JK3	272° 50' 30"	
"	15	95° 41' 18"	
	Plus	270° 00' 00"	
		365° 41' 18"	(Dble)
Mean (n) HCR4		180° 50' 39"	
Total Mean HCR4		182° 50' 39"	

Remarks

T@IN4

Vert. Cir. Rding.  
 FL. FR.

HI@15 - 1.800 m

Site	15	98° 24' 51"	261° 36' 09"
"	15	98° 24' 48"	261° 36' 06"
Mean VCR4		98° 24' 21"	



June 18, 1979  
 T&N - John K.  
 Rod - Stan B

Weather part sun  
 Temp: 12°C  
 Press: 877 mmb

Pg 41

T@IN4

Slope Distance IN4-140

		Hor. Cir. Rd.
Site	JK3	0° 00' 00"
"	140	248° 46' 33" (1st)
"	JK3	248° 46' 33"
"	140	137° 33' 03"
	Plus	360° 00' 00"
		497° 33' 03" (Dble)
Mean (a) HCR		248° 46' 31"

SD
128.750
128.753
128.752
128.751
128.753
128.754
128.753

$\bar{x} = 128.752m$   $S = \pm 0.001$

Corrected SD = 128.757m

Site	JK3	90° 00' 00"
"	140	228° 46' 38" (1st)
"	JK3	228° 46' 38"
"	140	227° 33' 03"
	Plus	270° 00' 00"
		497° 23' 03" (Dble)

Mean (a) HCR  $\bar{x}$  248° 46' 31"  
 Total Mean HCR  $\bar{x}$  248° 46' 31"

T@IN4

Vert. Cir. Rd.

FL

F.R.

site	140	98° 29' 06"	267° 30' 39"
"	140	98° 29' 06"	267° 30' 39"
Mean VCR		98° 28' 13"	

HI @ 140 - 1.56m

HI @ IN4 - 1.48m

June 18, 1979  
 T&N - John K.  
 Rod - Stam B

Weather: part sun  
 Temp 15°C  
 Press. 877 mmHg

Pg 42

π@INA

Slope Distance INA-17

		Hor. Cir. Rd.	
Site	JK3	0° 00' 00"	
"	17	060° 13' 15"	(1 <sup>st</sup> )
"	JK3	260° 13' 15"	
"	17	160° 26' 18"	
	Plus	360° 00' 00"	
		500° 26' 18"	(Dble)
Mean HCR	Δ	260° 13' 09"	
Site	JK3	90° 00' 00"	
"	17	350° 13' 06"	(1 <sup>st</sup> )
"	JK3	350° 13' 06"	
"	17	250° 26' 12"	
	Plus	270° 00' 00"	
		520° 26' 12"	(Dble)
Mean HCR	Δ	260° 13' 06"	
Total Mean HCR	Δ	260° 13' 07"	

SD  
 168.074  
 168.074  
 168.075  
 168.073  
 168.073  
 168.074  
 168.074

$\bar{x} = 168.074 \text{ m}$   
 $s = \pm 0.001$   
 Corrected SD = 168.081 m

π@INA

Vert. Cir. Rd.

HI @ 17 — 1.640 m

		FL.	FR.
Site	17	90° 40' 06"	269° 21' 54"
"	17	90° 40' 09"	269° 21' 31"
Mean VCR	Δ	90° 39' 07"	

June 13, 1979.  
T&N - John K.  
Rod - Stan B.

Weather  
Temp. 13°C  
Press. 1876 mmb

Pg 42

X@IN4

Slope Distance IN4-25

Site	JK3	Hor. Cir. Rd.	
	JK3	0° 00' 00"	
"	25	229° 13' 12"	(1st)
"	JK3	229° 13' 12"	
"	25	98° 26' 18"	
	Plus.	360° 00' 00"	
		458° 26' 18"	(Dble)
Mean HCR 4		229° 13' 09"	

SD.
203.159
203.159
203.160
203.158
203.159
203.158
203.158

$\bar{x} = 203.159 \text{ m}$   $S = 0.001$   
Corrected SD = 203.167 m.

Site	JK3	90° 00' 00"	
"	25	319° 13' 09"	(1st)
"	JK3	319° 13' 09"	
"	25	188° 26' 09"	
	Plus.	360° 00' 00"	
		458° 26' 09"	(Dble)

(Mean) HCR 4 229° 13' 04"  
Total Mean HCR 4 229° 13' 06"

X@IN4

	Vert. Cir. Rd.	
	FL	FR
site 25	87° 50' 12"	272° 11' 57"
" 25	87° 50' 06"	272° 11' 54"
Mean VCR 4	87° 49' 07"	

HT @ 25 — 1.720 m

June 19, 1979  
 XEN John K.  
 Rod. Stan B

Weather: Part cloud  
 Temp. 18°C  
 Press 880 mmB

Pg-44

π@IN4

Slope Distance IN4-143

		Hor. Cir. Rd	
Site	JK3	0° 00' 00"	(1 <sup>st</sup> )
"	143	211° 33' 24"	
"	JK3	211° 33' 24"	
"	143	63° 06' 51"	
Plus		360° 00' 00"	
		483° 06' 51"	(Dob)

SD.

- 199.461
- 199.461
- 199.460
- 199.460
- 199.458
- 199.461
- 199.460

Mean (a) HCR  $\Delta$  21° 33' 25"

$\bar{x} = 199.460m$   $s = \pm 0.001$

Corrected SD = 199.468m.

Site		90° 00' 00"	
"	143	201° 33' 24"	(1 <sup>st</sup> )
"	JK3	201° 33' 24"	
"	143	153° 06' 48"	
Plus		270° 00' 00"	
		423° 06' 48"	(Dob)

Mean (a) HCR  $\Delta$  21° 33' 21"

Total Mean HCR  $\Delta$  21° 33' 23"

π@IN4

Vert. Cir. Rd

FL FR

Site	143	88° 49' 03"	271° 12' 54"
"	143	88° 49' 03"	271° 12' 57"
Mean KR $\Delta$		88° 48' 04"	

HI@143 — 1.680m

HI@IN4 — 1.550m

June 19, 1979,  
T&N - John K  
Red - Stan B.

Weather:  
Temp. 13°C  
Press. 879 mmHg

RJ-45

<u>X@INA</u>		Hor. Cir. Rd.		Slope Distance INA-27	
Site	JK3	0° 00' 00"		SD	188.642
"	27	202° 26' 24" (1st)			188.641
"	JK3	202° 25' 24"			188.639
"	27	44° 50' 57"			188.642
	Plus	360° 00' 00"			188.643
		404° 50' 57" (Dble)			188.640
Mean(1) HCR		202° 25' 28"		$\bar{x} = 188.641 \quad s = 0.002$	
Site	JK3	90° 00' 00"		Corrected SD = 188.648 m	
"	27	292° 25' 20" (1st)			
"	JK3	292° 25' 20"			
"	27	134° 51' 00"			
	Plus	270° 00' 00"			
		404° 51' 00" (Dble)			
Mean(2) HCR		202° 25' 30"			
Total Mean HCR		202° 25' 29"			
<u>X@INA</u>		Vert. Cir. Rd.		HT@27 - 1.520m	
		FL	FR		
Site	27	90° 44' 57"	269° 17' 12"		
"	27	90° 45' 03"	269° 17' 09"		
Mean HCR		90° 43' 05"			

June 19, 1979.  
 T & N - John K  
 Red - Stan B.

Weather part cloudy  
 Temp 14°C  
 Press 879 mmb

Pg-46

<u>T@INA</u>		Hor. Cir. Rd.	
site	JK3	0° 00' 00"	
"	26	183° 59' 45"	(1st)
"	JK3	183° 59' 45"	
"	26	7° 59' 48"	
	Plus	360° 00' 00"	
		367° 59' 48"	(Dble)
Mean HCR	JK3	183° 59' 54"	
site	JK3	90° 00' 00"	
"	26	273° 59' 48"	(1st)
"	JK3	273° 59' 48"	
"	26	97° 59' 42"	
	Plus	360° 00' 00"	
		367° 59' 48"	(Dble)
Mean HCR	JK3	183° 59' 51"	
Total Mean HCR	JK3	183° 59' 52"	
<u>T@INA</u>		Vert. Cir. Rd.	
		FL.	FR.
site	26	93° 01' 32"	267° 00' 21"
"	26	93° 01' 30"	267° 00' 24"
Mean VCR	JK3	93° 00' 34"	

Slope Distance INA-26

SD  
 183.462  
 183.462  
 183.461  
 183.462  
 183.462  
 183.462  
 183.462

$\bar{x} = 183.462$   $s = 10.0004$   
 Corrected SD = 183.469m

HI @ 26 — 1.500m

June 19, 1979.  
 π&N - John K.  
 Rad - Stan B.

Weather Partly cloudy  
 Temp 13°C  
 Press 880 mmHg

Pg-17

π@INA

Slope Distance INA-4

site		Hor. Cir. Rd	
JK3		0° 00' 00"	
"	4	160° 10' 39"	(1st)
"	JK3	160° 10' 39"	
"	4	320° 21' 24"	
Plus		0° 00' 00"	

SD.

222.277

222.277

222.278

222.277

222.277

Mean HCR Δ		320° 21' 24" (Dble)	
		160° 10' 42"	

222.277

222.277

$\bar{x} = 222.277$   $S = \pm 0.0004$ .

Corrected SD = 222.286 m

site	JK3	90° 00' 00"	
"	4	250° 10' 36"	(1st)
"	JK3	250° 10' 36"	
"	4	50° 21' 27"	
Plus		270° 00' 00"	

Mean HCR Δ 160° 10' 44"

Total Mean HCR Δ 160° 10' 43"

π@INA

Vert. Cir. Rd

FL. FR.

site	4	96° 00' 33"	263° 41' 21"
"	4	96° 20' 30"	263° 41' 24"

HT @ 4 — 1.84 m

Mean VCR Δ 96° 19' 35"

320 LX Pacific Rainproof

June 19, 1979 TED - John K. Red - Stan B.		Weather Temp: 12°C Press: 880mb.		Pg-48	
<u>TI@IN4</u>		Hor. Cir. Rd.		Slope Distance IN4-6	
site	JK3	0° 00' 00"		SD	
"	6	168° 50' 39" (1st)		226.984	
"	JK3	168° 50' 39"		226.985	
"	6	337° 41' 33"		226.983	
	Plus	0° 00' 00"		226.985	
		337° 41' 33" (Dble)		226.982	
Mean(1) HCR		168° 50' 47"		226.984	
				226.984	
				x = 226.984 S ± 0.001	
				Corrected SD = 226.993 m	
site	JK3	90° 00' 00"			
"	6	258° 50' 42" (1st)			
"	JK3	258° 50' 42"			
"	6	67° 41' 39"			
		337° 41' 39" (Dble)			
Mean(2) HCR		168° 50' 49"			
Total Mean HCR		168° 50' 48"			
<u>TI@IN4</u>		Vert. Cir. Rd.			
		FL.	FR.	HT@ 6 — 1.600m	
site		93° 36' 30"	266° 25' 51"		
"		93° 36' 30"	266° 25' 48"		
Mean HCR		93° 35' 20"			

June 19, 1979  
 XEN - Jahn K  
 Rod - Stan B

Weather part cloudy  
 Temp. 18°C - 15°C  
 Press. 279 mmHg

Pg-49

π@INA

		Hor. Cir. Rd.	
site	JK3	0° 00' 00"	
"	CP	168° 54' 51"	(1st)
"	JK3	168° 54' 51"	
"	CP	337° 50' 06"	
	Plus	0° 00' 00"	
		337° 50' 06"	(Dble)
Mean HCR Δ		168° 55' 03"	
site	JK3	90° 00' 00"	
"	CP	258° 54' 51"	(1st)
"	JK3	258° 54' 51"	
"	CP	67° 50' 00"	
	Plus	270° 00' 00"	
		337° 50' 00"	(Dble)

Mean HCR Δ 168° 55' 00"

Total Mean HCR Δ 168° 55' 01"

π@INA

Vert. Cir. Rd.

FL. 1 F.R.

site	CP	93° 59' 20"	266° 03' 00"
"	CP	93° 59' 56"	266° 03' 06"
Mean VCR Δ		93° 58' 15"	

320 LX Pacific Rainproof

Slope Distance INA-CP

SD

206.694

206.696

206.695

206.695

206.695

206.695

206.695

$\bar{x} = 206.695 \text{ m}$   $S = \pm 0.001$

Corrected SD = 206.703 m

Remarks:

CP - claim Rod

HI @ CP — 1.54 m

666.84

666.81

666.80

666.80

666.80

June 7, 1979  
 T&N - John K.  
 Rod - Strain B

Weather Part cloudy  
 Temp. 15°C  
 Press 873mmB

Hg-60

<u>TA@INA</u>		Hor. Cir. Rd.		Slope	Distance IN4-7.
site	JK3	0° 00' 00"		SD	
"	7	162° 10' 06"	(1 <sup>st</sup> )	171.514	171.515
"	JK3	162° 10' 06"		171.520	171.513
"	7	324° 20' 18"		171.520	171.515
				171.517	171.518
	Plus.	0° 00' 00"		171.520	171.519
		324° 20' 18"	(Dble)	171.520	171.518
Mean (w) HCR $\bar{x}$		162° 10' 09"		171.500	171.517
				171.516	171.517
site	JK3	90° 00' 00"		$\bar{x} = 171.518\text{m}$ $S = \pm 0.002$ Corrected SD = 171.525m	
"	7	252° 10' 06"	(1 <sup>st</sup> )		
"	JK3	252° 10' 06"			
"	7	54° 20' 12"			
	Plus.	270° 00' 00"			
Mean (w) HCR $\bar{x}$		162° 10' 06"		Remarks	
Total Mean HCR $\bar{x}$		162° 10' 07"			
<u>TA@INA</u>		Vert. Cir. Rd.		HI@7 - 1.620m	
		FL. FR.			
site	7	97° 49' 15"	268° 13' 15"		
"	7	97° 49' 06"	268° 13' 15"		
Mean VCR $\bar{x}$		97° 47' 58"			

520 LX Pacific Rainproof

June 8, 1949,  
 TEN - Shank  
 Rod - Stan B.

Weather: Partly cloudy  
 Temp. 18°C  
 Press. 878 mmb

Pg. 61

T@IN4

Slope Distance IN4-2

		Hor. Cir. Rd.	
site	JK3	0° 00' 00"	
"	2	162° 14' 00" (1st)	
"	JK3	162° 14' 00"	
"	2	324° 28' 00"	
	Plus.	0° 00' 00"	
		324° 28' 00" (Dble)	
Mean (w) HCR Δ		162° 14' 00"	

SD
268.317
268.318
268.318
268.318
268.318
268.317
268.317

$\bar{x} = 268.318 \text{ m}$   $s = \pm 0.001$   
 Corrected SD = 268.309 m

site	JK3	90° 00' 00"	
"	2	252° 13' 57" (1st)	
"	JK3	252° 13' 57"	
"	2	54° 28' 06"	
	Plus	270° 00' 00"	
		324° 28' 06" (Dble)	

Mean (w) HCR Δ 162° 14' 03"  
 Total Mean HCR Δ 162° 14' 01"

T@IN4

Vert. Cir. Rd.

		FL	F.R.
site	2	93° 42' 24"	266° 19' 51"
"	2	93° 42' 24"	266° 19' 48"
Mean VCR Δ		93° 41' 17"	

HI @ 2 = 1.360 m

June 28 1979  
 T&N - John K.  
 Rod -

Weather Over cast  
 Temp. 14°C  
 Press. 875 mmb

B3-52

π@INE

		Hor. Cir. Rd.	
Site	INI	0° 00' 00"	
"	5	235° 10' 33"	(1st)
"	INI	235° 10' 33"	
"	5	110° 21' 09"	
	Plus.	360° 00' 00"	
		470° 21' 09"	(Dble)
Mean (2) HCR Δ		235° 10' 25"	

Site	INI	90° 00' 00"	
"	5	325° 10' 33"	(1st)
"	INI	325° 10' 33"	
"	5	200° 21' 00"	
	Plus	270° 00' 00"	
		470° 21' 00"	(Dble)

Mean (2) HCR Δ 225° 10' 30"  
 Total Mean HCR Δ 235° 10' 22"

π@INE

		Vert. Cir. Rd.	
		FL	FR.
Site		94° 32' 48"	265° 28' 30"
"		94° 32' 48"	265° 28' 30"
Mean Vert. Δ		94° 32' 09"	

320 LX Pacific Rainproof

Slope Distance INE-5

SD  
 165.649  
 165.651  
 165.648  
 165.652  
 165.650  
 165.651

$\bar{x} = 165.651 \text{ m } S = \pm 0.003$   
 Corrected SD = 165.658 m

HI@ 5 — 1.500 m

HI@ INE — 1.570 m

June 20, 1979  
 XFN - John K.

Weather over cast.  
 Temp. 15°C  
 Press. 875 mmHg

Pg-53

X@INE

Slope Distance IN2-11&12

Site	INI	Hor. Cir. Rd.
	INI	0° 00' 00"
"	11&12	251° 40' 09" (1st)
"	INI	251° 40' 09"
"	11&12	143° 00' 18"
	Plus	360° 00' 00"
		503° 20' 18" (Dble)
Mean HCR	X	251° 40' 09"

SD
205.030
205.032
205.031
205.032
205.033
205.031
205.031
205.031

$\bar{x} = 205.031 \text{ m} \pm 0.001$   
 Corrected SD = 205.039 m

Site	INI	Hor. Cir. Rd.
	INI	90° 00' 00"
"	11&12	341° 40' 09" (1st)
"	INI	341° 40' 09"
"	11&12	233° 00' 12"
	Plus	360° 00' 00"
		503° 20' 18" (Dble)

Mean HCR X 251° 40' 06"  
 Total Mean HCR X 251° 40' 07"

X@INE

Vert. Cir. Rd.  
 FL. FR.

Site	11&12	FL.	FR.
	11&12	95° 09' 09"	264° 52' 15"
"	11&12	95° 09' 09"	264° 56' 09"
Mean VCR	X	95° 08' 29"	

HI @ 11&12 — 1600m

June 20, 1979,  
K&N-Johnk.

Weather over case  
Temp 15°C  
Press 875mmHg

π@INC

Site	INI	Hor. Cir. Rd.
	INI	0° 00' 00"
"	43	264° 29' 00" (1st)
"	INI	264° 29' 00"
"	43	168° 58' 00"

Plus: 360° 00' 00"  
528° 58' 00" (Dble)

Mean(HCR) 264° 29' 00"

Site	INI	Hor. Cir. Rd.
	INI	90° 00' 00"
"	43	254° 29' 00" (1st)
"	INI	254° 29' 00"
"	43	258° 58' 00"

Plus: 270° 00' 00"  
528° 58' 00" (Dble)

Mean(HCR) 264° 29' 00"

Total Mean HCR 264° 29' 00"

π@INC

Vert. Cir. Rd.

FL. FR.

Site	FL.	FR.	
43	93° 28' 30"	266° 39' 24"	
"	43	93° 28' 24"	266° 39' 24"

Mean VCR 93° 21' 30"

Pg-54

Slope Distance INC-43

SD

237.956

237.957

237.957

237.957

237.956

237.956

237.956

$\bar{X} = 237.956 \text{ m} \pm 0.001$

CORRECTED SD = 237.966m

HI@43 — 1.490 m

June 20, 1979.  
 π & N - John K.

Weather over cast  
 Temp. 15°C  
 Press. 876 mmb

Pg-55

<u>π@IN2</u>				Slope	Distance IN2-80
Site	INI	Hor. Cir. Rd.		SD	
"	80	0° 00' 00"		72.713	
"	INI	151° 54' 18" (1 <sup>st</sup> )		72.713	
"	80	151° 54' 18"		72.713	
"	INI	303° 49' 03"		72.714	
"	80	303° 49' 03"		72.714	
	Plus	0° 00' 00"		72.713	
		303° 49' 03" (Dble)		72.714	
				72.713	
Mean(1) HCRΔ		<u>151° 54' 33"</u>			
Site	INI	90° 00' 00"			
"	80	251° 54' 24" (1 <sup>st</sup> )			
"	INI	251° 54' 24"			
"	80	251° 54' 24"			
	Plus	270° 00' 00"			
		303° 49' 06" (Dble)			
Mean(2) HCRΔ		<u>151° 54' 33"</u>			
Total Mean HCRΔ		<u>151° 54' 33"</u>			
<u>π@IN2</u>		Vert. Cir. Rd.			
		FL.	FR.		
Site	80	91° 57' 36"	268° 04' 06"		
"	80	91° 57' 36"	268° 04' 06"		
Mean HCRΔ		<u>91° 56' 45"</u>			
				HI @ 80	-1.480 m

$\bar{x} = 72.713 \text{ m}$   $S = \pm 0.001$   
 Corrected SD = 72.716 m

June 21, 1979.  
 X & N - John K

Weather Partly Sunny  
 Temp. 6°C  
 Press 874 mmHg

Pg-26

X@IN3.

Site	INI	Hcr. Cir. Rd.	
	INI	0° 00' 00"	
"	120	323° 42' 10"	(1st)
"	INI	323° 42' 15"	
"	120	287° 24' 21"	

Plus 360° 00' 00"  
 647° 24' 21" (Dble)

Mean HCR  $\bar{X}$  323° 42' 10"

Site	INI	90° 00' 00"	
"	120	53° 42' 09"	(1st)
"	INI	53° 42' 09"	
"	120	17° 24' 15"	

Plus 630° 00' 00"  
 647° 24' 15" (Dble)

Mean HCR  $\bar{X}$  323° 42' 07"

Total Mean HCR  $\bar{X}$  323° 42' 08"

X@IN3.

Site	INI	Vert. Cir. Rd.	FR.
		FL	
Site	120	92° 40' 09"	267° 21' 39"
"	120	92° 40' 06"	267° 21' 42"

Mean VCR  $\bar{X}$  98° 39' 14"

Slope Distance IN3-120

SD

206.513  
 206.513  
 206.513  
 206.515  
 206.515  
 206.511  
 206.512  
 206.513

$\bar{x}$  = 206.513m  $S = \pm 0.001$   
 Corrected SD = 206.582m

HI @ 120 — 1.68m

HI @ IN3 — 1.61m

June 21, 1979.  
 K&N - John K

Weather over cast  
 Temp. 14°C  
 Press. 880 mmHg

B-07

π@INS

site	INI	Hor. Cir. Rd.	
	INI	0° 00' 00"	
"	84	332° 03' 39" (1st)	
"	INI	332° 03' 39"	
"	84	304° 07' 03"	
	Plus	360° 00' 00"	
		664° 07' 03" (Dble)	
Mean(1) HCRΔ		<u>332° 03' 32"</u>	

site	INI	90° 00' 00"	
"	84	62° 03' 36" (1st)	
"	INI	62° 03' 36"	
"	84	24° 07' 03"	
	Plus	630° 00' 00"	
		664° 07' 03" (Dble)	

Mean(2) HCRΔ 332° 03' 32"  
 Total Mean HCRΔ 332° 03' 32"

π@INS

		Vert. Cir. Rd.	
		FL	FR
site	84	91° 41' 03"	268° 20' 33"
"	84	91° 41' 03"	268° 20' 33"
Mean VCRΔ		<u>91° 40' 15"</u>	

Slope Distance INS-84

SD

- 207.199
- 207.200
- 207.199
- 207.200
- 207.200
- 207.200
- 207.200

$\bar{x} = 207.200 \text{ m } S = \pm 0.0005$

Corrected SD = 207.208 m

HI@84 - 1.65m

June 23, 1979  
KEN - John K.

Weather over-cast.  
Temp. 12°C  
Press 831mmB

Pg. 58

π@IN3.

Slope Distance IN3-125

Hor. Cir. Rd.

site	INI	0° 00' 00"	
"	125	320° 26' 33"	(1 <sup>st</sup> )
"	INI	320° 26' 23"	
"	125	280° 52' 48"	
	Plus	360° 00' 00"	

SD  
87.821  
87.823  
87.822  
87.824  
87.821  
87.823

Mean(α) HCR 2 320° 26' 24"

$\bar{x} = 87.822m$   $S = \pm 0.001$

Corrected SD = 87.825m

site	INI	90° 00' 00"	
"	125	50° 26' 30"	(1 <sup>st</sup> )
"	INI	50° 26' 30"	
"	125	10° 52' 48"	
	Plus	630° 00' 00"	

640° 52' 48" (Double)

Mean(α) HCR 2 320° 26' 24"

Total Mean HCR 2 320° 26' 24"

π@IN3

Vert. Cir. Rd.

FL. FR.

site	125	94° 23' 06"	265° 38' 24"
"	125	94° 23' 06"	265° 38' 21"

HI @ 125 — 1.71m

Mean VCR 2 94° 23' 22"

320 LX Pacific Rainprot

June 24 1979  
T & N - John K.

Weather: over-cast  
Temp 10°C  
Press. 230 mmHg

Pg-5A

<u>κ@IN3</u>		Hor. Cir. Rd.	
site	INI	0° 00' 00"	
"	86	334° 18' 45"	(1st)
"	INI	334° 18' 45"	
"	86	308° 37' 18"	
	Plus	360° 00' 00"	
		668° 37' 18"	(Dble)
Mean(1) HCRΔ		334° 18' 39"	
site	INI	90° 00' 00"	
"	86	64° 18' 45"	(1st)
"	INI	64° 18' 45"	
"	86	38° 27' 27"	
	Plus	630° 00' 00"	
		668° 37' 27"	(Dble)
Mean(2) HCRΔ		334° 18' 46"	
Total Mean HCRΔ		334° 18' 41"	
<u>κ@IN3</u>		Vert. Cir. Rd.	
		FL	FR
site	86	92° 27' 48"	267° 38' 24"
"	86	92° 27' 48"	267° 33' 24"
Mean VCRΔ		92° 27' 18"	

Slope Distance IN3-86

SD

- 147.726
- 147.728
- 147.727
- 147.727
- 147.727
- 147.728
- 147.727

$X = 147.727 \pm 0.0007$

Corrected SD = 147.732m

HI @ 86 - 1.68m

June 1979  
T&N - John K.

Weather partly Sunny  
Temp. 13°C  
Press. 879 mmb

T@JKA		Hor. Cir. Rd.	
Site	JK3	0° 00' 00"	
"	VIIAR	11° 50' 00" (1st)	
"	JK3	11° 50' 00"	
"	VIIAR	23° 40' 00"	
	Plus	0° 00' 00"	
		83° 40' 00" (Dble)	
Mean of HCR 2		11° 50' 00"	
Site	JK3	90° 00' 00"	
"	VIIAR	101° 50' 00" (1st)	
"	JK3	101° 50' 00"	
"	VIIAR	113° 40' 00"	
	Plus	90° 00' 00"	
		203° 40' 00" (Dble)	
Mean of HCR 2		11° 50' 00"	
Total Mean HCR 2		11° 50' 00"	

T@JKA		Vert. Cir. Rd.	
		FL.	FR.
Site	VIIAR	91° 53' 15"	268° 07' 42"
"	VIIAR	91° 53' 18"	268° 07' 45"
Mean VCR 2		91° 53' 46"	

Slope Distance JKA - VIIAR

SD

453.199  
453.199  
453.202  
453.202  
453.203  
453.201  
453.201

$\bar{x} = 453.201 \text{ m } S = 30.0015$

Corrected SD = 453.218 m

HI @ VIIAR - 1.740 m

HI @ JKA - 1.42 m

June 1979  
TEN - John Kuhne  
Rod -

Weather Over-cast  
Temp 14°C  
Press. 872 mmb

19-61

π@ JK4

Slope Distance JK4-VIIOR

		Hor. Cir. Rd.	
Site	JK3	0° 00' 00"	
"	VIIOR	3° 56' 48" (1st)	
"	JK3	3° 56' 48"	
"	VIIOR	7° 53' 30"	
	Plus	0° 00' 00"	
		7° 53' 30" (Dble)	
Mean (w) HCRΔ		3° 56' 45"	

SD  
434.445  
434.446  
434.445  
434.446  
434.444  
434.444  
434.446

$\bar{x} = 434.445 \quad s = 10.001$

Corrected SD = 434.462 m

Site	JK3	90° 00' 00"	
"	VIIOR	93° 56' 45" (1st)	
"	JK3	93° 56' 45"	
"	VIIOR	97° 53' 30"	
	Plus	90° 00' 00"	
		187° 53' 30" (Dble)	

Mean (w) HCRΔ 3° 56' 45"

Total Mean HCRΔ 3° 56' 45"

π@ JK4

Vert. Cir. Rd.

		FL	FR
site	VIIOR	91° 57' 15"	268° 04' 24"
"	VIIOR	91° 57' 03"	268° 04' 24"
Mean VCRΔ		91° 56' 30"	

HI@VIIOR — 1.640 m

HI@ —

June 1979  
 T&N-Johnk.  
 Rad-

Weather over-cast  
 Temp. 14°C  
 Press: 879 mmb

Page 62

π@JKA

Slope Distance JKA-VI23R

		Hor. Cir. Rd.	
Site	JKA	0° 00' 00"	
"	VI23R	355° 25' 18" (1st)	
"	JKA	355° 25' 18"	
"	VI23R	351° 10' 45"	
	Plus	360° 00' 00"	
	"	711° 10' 45" (Dble)	
Mean (w) HCR		355° 25' 22"	

SD

425.573

425.573

425.573

425.573

425.574

425.573

425.574

$\bar{x} = 425.573 \text{ m } s = 0.0005$

Corrected SD = 425.590 m

site	JKA	90° 00' 00"	
"	VI23R	85° 35' 18" (1st)	
"	JKA	85° 35' 18"	
"	VI23R	81° 10' 42"	
	Plus	635° 00' 00"	
	"	711° 10' 42" (Dble)	
Mean (2) HCR		355° 35' 21"	
Total Mean HCR		355° 35' 22"	

π@JKA

Vert. Cir. Rd.

FL

FR

HI@VI23R — 1.600 m

site	VI23R	91° 53' 00"	268° 09' 03"
"	VI23R	91° 53' 00"	268° 09' 03"
Mean VCR		91° 51' 59"	

June 1979  
 T&N John Kuhne  
 Rod

Weather partly sunny  
 Temp. 15°C  
 Press. 877 mmHg

Pg. 63

π@JK4

Slope Distance JK4-V126R.

		Hor. Cir. Rd.	
site	JK3	0° 00' 00"	
"	V126R	356° 16' 12"	(1st)
"	JK3	356° 16' 18"	
"	V126R	358° 32' 27"	
	Plus	360° 00' 00"	

SD  
 306.456  
 306.456  
 306.456  
 306.455  
 306.454  
 306.456  
 306.455

Mean(1) HCR Δ		712° 32' 27" (Dble)	
		356° 16' 13"	

$\bar{S} = 306.455m$   $S = \pm 0.0008$

site	JK3	90° 00' 00"	
"	V126R	86° 16' 06"	(1st)
"	JK3	86° 16' 06"	
"	V126R	88° 32' 24"	
	Plus	630° 00' 00"	

Corrected SD = 306.462m

		712° 32' 24" (Dble)	
Mean(2) HCR Δ		356° 16' 12"	
Total Mean HCR Δ		356° 16' 13"	

π@JK4

		Vert. Cir. Rd.	
		FL.	FR
site	V126R	95° 40' 18"	264° 21' 45"
"	V126R	95° 40' 18"	264° 21' 45"
Mean VCR Δ		95° 39' 16"	

HI @ V126R — 1.61 m

July 10 1979  
 T&N - John K  
 Rod -

Weather. sunny  
 Temp. 22°C  
 Press. 875 mmb.

13-64

T@IN2

Slope Distance

Site	Hbr. Cir. Rd.	
	0° 00' 00"	
"	289° 03' 28"	(1st)
"	288° 03' 28"	
"	216° 06' 57"	
Plus	360° 00' 00"	
	576° 06' 57"	(Dble)
Mean (w) HCR Δ	288° 03' 28"	

SD
125.108
125.104
125.108
125.106
125.103
125.107
125.108
125.105

$\bar{x} = 125.106 \text{ m}$   $s = \pm 0.002 \text{ m}$

Corrected SD =

Site	90° 00' 00"	
"	18° 03' 27"	(1st)
"	18° 03' 27"	
"	206° 06' 57"	
Plus	270° 00' 00"	
	576° 06' 57"	(Dble)

Mean (w) HCR Δ 288° 03' 28"

Total Mean HCR Δ 288° 03' 28"

T@INa

Vert. Cir. Rd.

HI@IN2 - 1.65 m

Site	FL.	FR.
	98° 03' 33"	267° 57' 24"
"	92° 03' 36"	267° 57' 19"
Mean VCR Δ	98° 03' 07"	

HI@72 - 1.65 m

July 14, 1979. X&N - John Kuhne Red -		Weather, overcast Temp. 16°C Press. 898 mmHg		Pg. 65	
<u>π@ DPe</u>				Slope Distance DPe-79X05	
		Hor. Cir. Rdng.		SD	
site	DY2	0° 00' 00"		401.787	
"	79X05	303° 25' 26" (1 <sup>st</sup> )		401.786	
"	DY2	303° 25' 26"		401.786	
"	79X05	246° 50' 57"		401.786	
	Plus	360° 00' 00"		401.786	
		606° 50' 57" (2 <sup>nd</sup> )		401.787	
Mean (1)	HCR Δ	303° 25' 28"		Σ = 401.786	S = ±0.001
				Corrected SD = 401.800m	
site	DY2	90° 00' 00"			
"	79X05	33° 25' 24" (1 <sup>st</sup> )			
"	DY2	33° 25' 24"			
"	79X05	286° 50' 57"			
	Plus	360° 00' 00"			
		606° 50' 57" (2 <sup>nd</sup> )			
Mean (2)	HCR Δ	303° 25' 28"			
Total Mean	HCR Δ	303° 25' 28"			
<u>π@ DPe</u>		Vert. Cir. Rd.		HI@ DPe. → 1.375 m	
		FL	FR		
site	79X05	88° 50' 15"	271° 09' 27"		HI @ 79X05 - 1.330 m
"	79X05	88° 50' 15"	271° 09' 24"		
Mean VCR Δ		88° 50' 25"			



July 19, 1979  
T.E.W. John K.  
Rod. Sohn K.

Weather: sunny  
Temp 26°C  
Press. 884 mmb

Pg. 67

756

		Hor. Cir. Rd.	
site	Dy2	0°00'00"	
"	79X06	349°17'18"	(1st)
"	Dy2	349°17'18"	
"	79X06	338°34'30"	
	Plus	360°00'00"	
		698°34'30" (Dble)	
Mean(HCR)		349°17'15"	

site	Dy2	90°00'00"	
"	79X06	79°17'15"	(1st)
"	Dy2	79°17'15"	
"	79X06	68°34'24"	
	Plus	630°00'00"	
		698°34'24" (Dble)	

Mean(HCR) 349°17'12"  
Total Mean HCR 349°17'13"

756

		Vert. Cir. Rd.	
site	79X06	89°01'54"	270°58'06"
"	79X06	89°01'54"	270°57'54"
Mean VCR		89°01'57"	

20 LX Pacific Rainproof

Slope Distance 756-79X06

SD

821.048  
821.049  
821.048  
821.047  
821.045  
821.047  
821.050  
821.044

$\bar{x} = 821.047m$   $s = 0.002m$

Corrected SD = 821.088m

HI @ 756 — 1.45m

HI @ 79X06 — 1.57m

July 23, 1979.  
 T&N - John Kuhne  
 Rod - John Kuhne

Weather over-cast  
 Temp 21°C  
 Press 838 mmb

Pg. 68

T@INE

Slope Distance IN2 → V-055-R

		Hor. Cir. Rd.	
Site	INI	0° 00' 00"	
"	V-055-R	138° 27' 12"	(1st)
"	INI	138° 27' 12"	
"	V-055-R	276° 54' 24"	
	Plus	0° 00' 00"	
		276° 54' 24"	(Dble)
Mean (2) HCR $\bar{X}$		138° 27' 12"	

SD

129.013

129.015

129.014

129.013

129.015

129.014

129.014

129.013

$\bar{X} = 129.014$  m  $S = \pm 0.001$  m  
 Corrected SD = 129.020 m

site	INI	90° 00' 00"	
"	V-055-R	228° 27' 03"	(1st)
"	INI	228° 27' 03"	
"	V-055-R	6° 54' 12"	
	Plus	276° 00' 00"	
		276° 54' 12"	(Dble)

Mean (2) HCR  $\bar{X}$  138° 27' 06"

Total Mean HCR  $\bar{X}$  138° 27' 09"

T@INE

Vert. Cir. Rd.

FL.

FR.

Site	V-055-R	90° 16' 57"	269° 42' 00"
"	V-055-R	90° 16' 51"	269° 42' 57"
Mean VCR $\bar{X}$		90° 16' 58"	

HI@INE — 1.57 m

HI@V-055R — 1.66 m

July 23, 1979  
 T&N - John K.  
 Rod -

Weather sunny  
 Temp: 21°C.  
 Press: 884 mmHg

Pg-69

π@ IN2

		Hor. Cir. Rd.
site	INI	0° 00' 00"
"	DDH-116	125° 24' 18" (1st)
"	INI	125° 24' 18"
"	DDH-116	250° 48' 45"
	Plus	0° 00' 00"
		250° 48' 45" (Dble)
Mean (w) HCR	Σ	125° 24' 23"

site	INI	90° 00' 00"
"	DDH-116	215° 24' 18" (1st)
"	INI	215° 24' 18"
"	DDH-116	340° 48' 45"
	Minus	90° 00' 00"
		250° 48' 45" (Dble)

Mean (e) HCR Σ 125° 24' 23"  
 Total Mean HCR Σ 125° 24' 23"

π@ IN2

		Vert. Cir. Rd.	
		FL.	FR.
site	DDH-116	89° 33' 42"	270° 26' 30"
"	DDH-116	89° 33' 42"	270° 26' 30"
Mean VCR	Σ	89° 33' 26"	

Do LX Pass. Rainproof

Slope Distance IN2 → DDH-116

SD
125.542
125.541
125.543
125.540
125.543
125.541
125.541

$\bar{x} = 125.542 \text{ m } S = \pm 0.001 \text{ m}$   
 Corrected SD = 125.548 m

HI @ 116 — 1.63 m

July 24, 1979.  
 π@N - John K.  
 Rd - John K.

Weather: sunny.  
 Temp: 29°C  
 Press: 883 mmb

13-70

π@IN2

Hor. Cir. Rd.

site	INI	0° 00' 00"	
"	108	118° 25' 03" (130)	
"	INI	118° 25' 03"	
"	108	284° 50' 24"	
	Plus	0° 00' 00"	
		284° 50' 24" (Dbe)	
Mean(H) HCRΔ		112° 25' 12"	

site	INI	90° 00' 00"	
"	108	202° 24' 57" (14)	
"	INI	202° 24' 57"	
"	108	314° 00' 24"	
	Minus	90° 00' 00"	
		224° 50' 24" (Dbe)	
Mean(H) HCRΔ		112° 25' 12"	
Total Mean HCRΔ		112° 25' 12"	

Slope Distance IN2-108

SD

128.586  
 128.584  
 128.584  
 128.585  
 128.585  
 128.586  
 128.586

$\bar{x} = 128.585 \text{ m}$   $S = \pm 0.001 \text{ m}$   
 Corrected SD = 128.591

π@IN2

Vert. Cir. Rd

		FL	FR
site	108	89° 21' 21"	270° 39' 48"
"	108	89° 21' 27"	270° 39' 30"
Mean VCR Δ		89° 20' 54"	

HI @ IN2 — 1.57

HI @ 108 — 1.41 m

July 04, 1979,  
 TEN - John K.  
 Rod - John K

Weather: sunny  
 Temp. 22°C  
 Press. 288 mmb

Pg 51

T@IN2

Hor. Cir. Rd.  
 site IN1 0° 00' 00"  
 " 71 288° 04' 06" (1<sup>st</sup>)  
 " IN1 288° 04' 06"  
 " 71 516° 08' 06"  
 Plus 360° 00' 00"  
 576° 08' 06" (Dble)  
 Mean(2) HCRΔ 288° 04' 03"

site IN1 90° 00' 00"  
 " 71 18° 04' 03" (1<sup>st</sup>)  
 " IN1 18° 04' 03"  
 " 71 306° 08' 06"  
 Plus 360° 00' 00"  
 576° 08' 06" (Dble)

Mean(2) HCRΔ 288° 04' 03"  
 Total Mean HCRΔ 288° 04' 03"

T@IN2

Vert. Cir. Rd.

FL. FR.  
 site 71 98° 09' 48" 267° 51' 06"  
 " 71 92° 09' 51" 267° 51' 09"  
 Mean VCRΔ 98° 09' 21"

320 LX Pacific Rainproof

Slope Distance IN2-V-71-R

SD

25.120

25.123

25.122

25.123

25.122

25.122

25.121

25.123

$\bar{x} = 25.122$   $s = \pm 0.001$  m.

Corrected SD = 25.122 m

HI@71 — 1.61 m

July 29, 1979  
 T&N - John K.  
 Rod - John K.

Weather: sunny  
 Temp: 28°C  
 Press: 988 mmb

Pg-72

T@INA

		Hor. Cir. Rd.
site	INI	0° 00' 00"
"	72	265° 35' 03" (1st)
"	INI	260° 35' 03"
"	72	171° 10' 18"
Plus		360° 00' 00"
		531° 10' 18" (Dble)

Mean of HCRΔ 265° 35' 09"

site	INI	90° 00' 00"
"	72	250° 35' 03" (1st)
"	INI	360° 35' 03"
"	72	261° 10' 18"
Plus		270° 00' 00"

531° 10' 18" (Dble)

Mean of HCRΔ 265° 35' 09"

Total Mean HCRΔ 265° 35' 09"

T@IN2

Vert. Cir. Rd.

		FL.	FR.
site	72	95° 12' 48"	264° 48' 21"
"	72	95° 12' 54"	264° 48' 24"
Mean VCRΔ		95° 12' 13"	

320 LX Pacific Ranges

Slope Distance INA-V-72-R

SD

155.205

155.203

155.202

155.202

155.203

155.201

155.205

155.203

$\bar{x} = 155.203 \text{ m} \pm 0.001 \text{ m}$

Corrected SD = 155.210 m

HT@ 72 — 1.47 m



July 25, 1979

T&N - John K.

Rod - John K.

Weather: partly cloud.

Temp 19

Press. 878 mmb

Pg 74

T@IN3

		Hor. Cir. Rd.	
site	INI	0° 00' 00"	
"	O84	332° 20' <sup>39"</sup> 57" (1st)	
"	INI	332° 20' <sup>39"</sup> 51"	
"	O84	304° 41' <sup>15"</sup> 21"	
Plus		360° 00' 00"	
		664° 41' 15" (Dble)	

Mean(1) HCRΔ 332° 20' 38"

site	INI	90° 00' 00"
"	O84	62° 00' 36" (1st)
"	INI	62° 20' 36"
"	O84	34° 41' 09"
Plus		630° 00' 00"

664° 41' 09" (Dble)

Mean(2) HCRΔ 332° 20' 34"

Total Mean HCRΔ 332° 20' 36"

T@IN3 Vert. Cir. Rd.

	FL.	FR.
site	O84	91° 39' 06" 268° 21' 36"
"	O84	91° 39' 09" 268° 21' 39"
Mean VCRΔ		91° 39' 45"

320 LX Pacific Rainproof

Slope Distance: IN3-V-O84-R

SD

207.751  
207.752  
207.752  
207.752  
207.752  
207.752  
207.752  
207.752  
207.752  
207.752

$\bar{x} = 207.752 \text{ m} \pm 0.001 \text{ m}$   
Corrected SD = 207.761 m

HI @ IN3 — 157 m

HI @ V-O84-R — 160 m

July 25, 1974  
 T<sub>e</sub> N-John K.  
 Rod - John K.

Weather part sun  
 Temp: 23°C  
 Press: 877 mmb

Pg. 75

T@IN3

		Hor. Cir. Rd.	
Site	INI	0° 00' 00"	
"	101	316° 26' 30"	(1st)
"	INI	316° 26' 30"	
"	101	272° 52' 45"	
Plus		360° 00' 00"	
		632° 52' 45"	(Dble)
Mean(H) HCR		316° 26' 22"	

Site	INI	90° 00' 00"	
"	101	46° 26' 24"	(1st)
"	INI	46° 26' 24"	
"	101	02° 52' 42"	
Plus		620° 00' 00"	
		632° 52' 42"	(Dble)

Mean(H) HCR  $\rightarrow$  316° 26' 21"

Total Mean HCR  $\rightarrow$  316° 26' 22"

T@IN3

Vert. Cir. Rd.

		FL.	FR.
Site	101	92° 48' 21"	267° 12' 30"
"	101	92° 48' 24"	267° 12' 30"
Mean VCR		92° 47' 56"	

320 LX Pacific Rainproof

Slope Distance IN3-V-101-R

SD

210.606  
 210.557  
 210.657  
 210.557  
 210.556  
 210.558  
 210.557  
 210.557

$\bar{x} = 210.557 \text{ m} \pm 0.001 \text{ m}$   
 Corrected SD = 210.567 m

HI @ V-101-R — 1.62 m

July 25, 1974  
 π & N - John K.  
 Rod - John K.

Weather over-cast  
 Temp. 21°C  
 Press. 888 mmb

Pg-76

π @ IN3

		Hor. Cir. Rd.
Site	INI	0° 00' 00"
"	103	310° 32' 12" (1st)
"	INI	310° 32' 12"
"	103	261° 04' 21"
	Plus	360° 00' 00"
		621° 04' 21" (Dble)
Mean (d) HCR		310° 32' 11"

site	INI	90° 00' 00"
"	103	40° 32' 12" (1st)
"	INI	40° 32' 12"
"	103	351° 04' 24"
	Plus	360° 00' 00"
		621° 04' 24" (Dble)

Mean (d) HCR = 310° 32' 12"

Total Mean HCR = 310° 32' 11"

π @ IN3

		Vert. Cir. Rd.	
		FL	FR
Site	103	92° 32' 30"	267° 28' 24"
"	103	92° 32' 27"	267° 28' 24"
Mean VCR		92° 32' 02"	

DLK Pacific R. print

Slope Distance IN3-DDH-03

SD

150.179

150.172

150.176

150.176

150.172

150.177

150.176

150.176

$\bar{x} = 150.175$   $s = \pm 0.002$  m

Corrected SD = 150.182

HI @ DDH103 = 1.49 m

July 25, 1979  
 XEN, ROD - Sohn K

North of Overhead  
 Temp 21°C  
 Press: 874 mmHg

<u>X@ IN3</u>		Hor. Cir. Rd.	
Site	INI	0° 00' 00"	
"	105	300° 58' 03" (1st)	
"	INI	300° 58' 03"	
"	105	241° 56' 06"	
	Plus	360° 00' 00"	
		601° 56' 06" (Dole)	
Mean (HCR)		300° 58' 03"	
Site	INI	90° 00' 00"	
"	105	30° 58' 00" (1st)	
"	INI	30° 58' 00"	
"	105	231° 56' 00"	
	Plus	270° 00' 00"	
		601° 56' 00" (Dole)	
Mean (HCR)		300° 58' 00"	
Total Mean HCR		300° 58' 01"	
<u>X@ IN3</u>		Vert. Cir. Rd.	
		FL	FR
Site	105	91° 49' 57"	268° 10' 42"
"	105	91° 49' 57"	268° 10' 29"
Mean HCR		91° 49' 38"	

Pg-77

Slope Distance IN3-DDH-105

SD

- 92.255
- 92.256
- 92.256
- 92.255
- 92.254
- 92.255
- 92.256
- 92.255

$\bar{x} = 92.255 \text{ m} \pm 10.00 \text{ m}$   
 corrected SD = 92.259 m

HT @ DDH-105 = 1.33 m

		Date Aug 2 <sup>nd</sup> 1979.	Weather over course
		REN - John Kuhne	Temp. 9°C
		Rod - Stan B.	Press 823 mmHg
<u>X @ 756</u>			
		Hor. Cir. Rd.	
site	DY2	0° 00' 00"	
"	79-X-10	326° 08' 24" (1 <sup>st</sup> )	
"	DY2	326° 08' 24"	
"	79-X-10	292° 16' 48"	
	Plus	360° 00' 00"	
		652° 16' 48" (Dble)	
Mean (HCR)	HCR	306° 08' 24"	
site	DY2	90° 00' 00"	
"	79-X-10	56° 08' 24" (1 <sup>st</sup> )	
"	DY2	56° 08' 24"	
"	79-X-10	292° 16' 48"	
	Plus	360° 00' 00"	
		652° 16' 48" (Dble)	
Mean (HCR)	HCR	326° 08' 24"	
Total Mean HCR 326° 08' 24"			
<u>X @ 756</u>		Vert. Cir. Rd.	
		FL.	FR.
site	79-X-10	94° 05' 12"	265° 54' 24"
"	79-X-10	94° 05' 12"	260° 54' 21"
Mean (HCR)	HCR	94° 05' 25"	

19-LX Pacific Report

Slope Distance IB 756-79-X-10

SD

- 672.545
- 672.546
- 672.546
- 672.547
- 672.546
- 672.547
- 672.547
- 672.547

$\bar{x} = 672.546m$   $S = \pm 0.001m$

corrected SD = 672.549m

HI @ 756 — 1.41 m

HI @ 79-X-10 — 1.67 m

Date - Aug 2nd 1979.  
 XEN - John Kuhne.  
 Rod - Stan B.

Weather - overcast  
 Temp. 9°C  
 Press: 882mmHg

79-79

X@ 756

Slope Distance IB-756 → 79-X-09

Hor. Cir. Rd.  
 site D12 0° 00' 00"  
 " 79-X-09 327° 16' 03" (1st)  
 " D12 327° 16' 03"  
 " 79-X-09 294° 32' 06"  
 Plus 360° 00' 00"  
 654° 32' 06" (Dble)  
 Mean HCR Δ 327° 16' 03"

SD  
 744.678  
 744.678  
 744.680  
 744.679  
 744.679  
 744.679  
 744.679  
 744.680

site D12 90° 00' 00"  
 " 79-X-09 57° 16' 00" (1st)  
 " D12 57° 16' 00"  
 " 79-X-09 57° 16' 00"  
 Plus 360° 00' 00"  
 654° 31' 57" (Dble)  
 Mean HCR Δ 327° 15' 59"

$\bar{x} = 744.679 \text{ m} \pm 0.001 \text{ m}$   
 Corrected SD = 744.704 m

Total Mean HCR Δ 327° 16' 01"

X@ 756

Vert. Cir. Rd.

FL FR

site 79-X-09 93° 16' 42" 266° 43' 36"  
 " 79-X-09 93° 16' 42" 266° 43' 36"  
 Mean VCR Δ 93° 16' 33"

HI @ 79-X-09 — 1.65 m

Date: Aug 2nd 1979.  
 XEN - John Kuhne.  
 Rod - Stan B.

Weather: ~~overcast~~ sunny  
 Temp. 14°C  
 Press: 884 mmb

Pg 80

<u>T@756</u>		
	Hor. Cir. Rd.	
site DYE	5°00'00"	
" 79-X-08	353°21'00" (1st)	
" DYE	353°21'00"	
" 79-X-08	316°41'57"	
Plus	360°00'00"	
	706°41'57" (Dble)	
Mean(HCR) Δ	353°20'08"	
Site DYE	90°00'00"	
" 79-X-08	83°20'54" (1st)	
" DYE	83°20'54"	
" 79-X-08	76°41'48"	
Plus	630°50'00"	
	706°41'48" (Dble)	
Mean(e) HCR Δ	353°20'54"	
Total Mean(HCR) Δ	353°20'56"	
<u>T@756</u>		
	Vert. Cir. Rd.	
	FL	FIR
Site 79-X-08	90°09'42"	269°50'45"
" 79-X-08	90°09'48"	269°50'54"
Mean KR Δ	90°09'38"	

Slope Distance IB=56→79-X-08	
SD	
605.470	
605.471	
605.470	
605.469	
605.469	
605.470	
$\bar{x} = 605.470$	$n = 6$
Corrected SD = 605.493m	
HI @	79-X-08 — 1.600m
HI @	756 — 1.40m