



019071

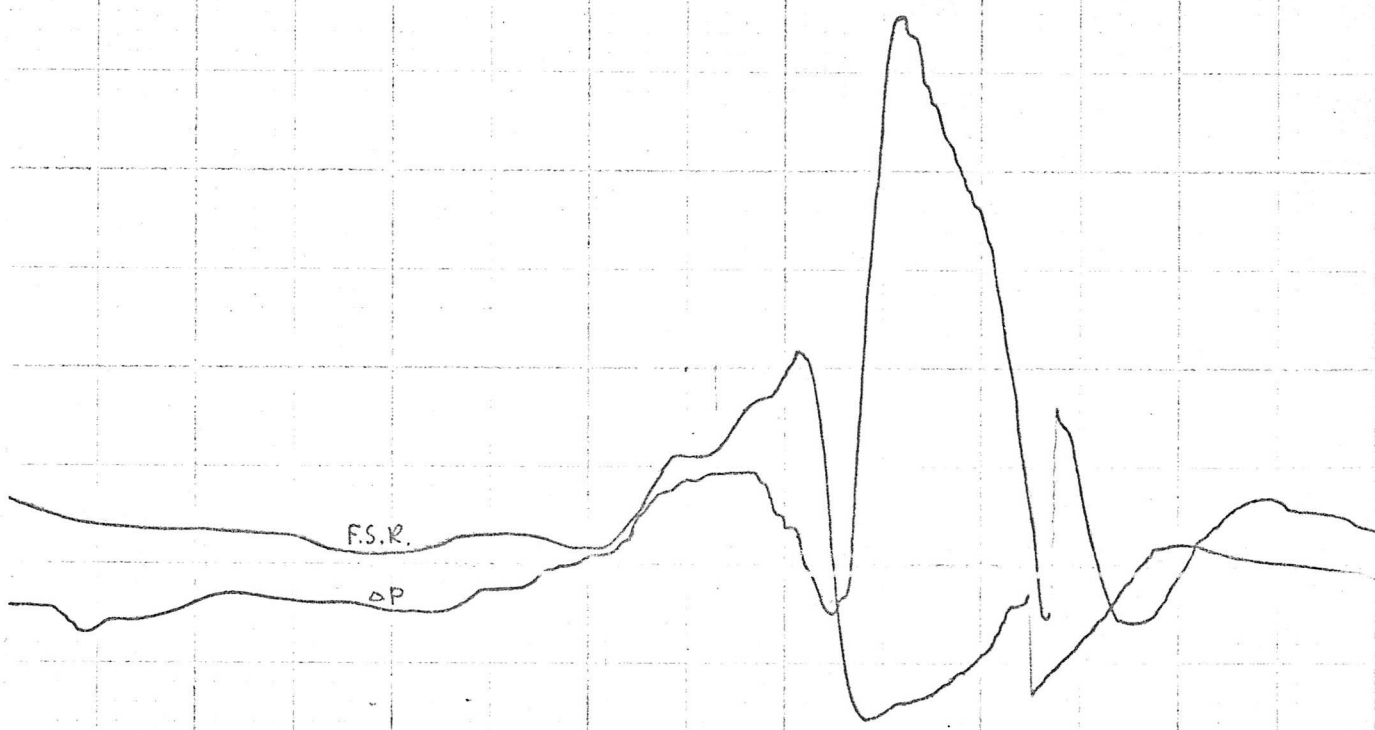
VANGORDA - DEPOSIT  
( YUKON )

SELECTED TRACES

Scintrex Turair  
Scintrex MAP-2 Magnetometer

Line 7S	4.5 Amperes loop current
Line 7S	2.5 Amperes loop current
Line 7S	1.0 Amperes loop current
Line 7S	1.0 Amperes loop current Recona.
Line 6S	1.0 Amperes loop current Recona.
Line 8S	1.0 Amperes loop current Recona.
Line 7S	magnetometer, altimeter

L7S: 4.5A  
inside Loop  
1% 1% ; 0.5° ; 500'

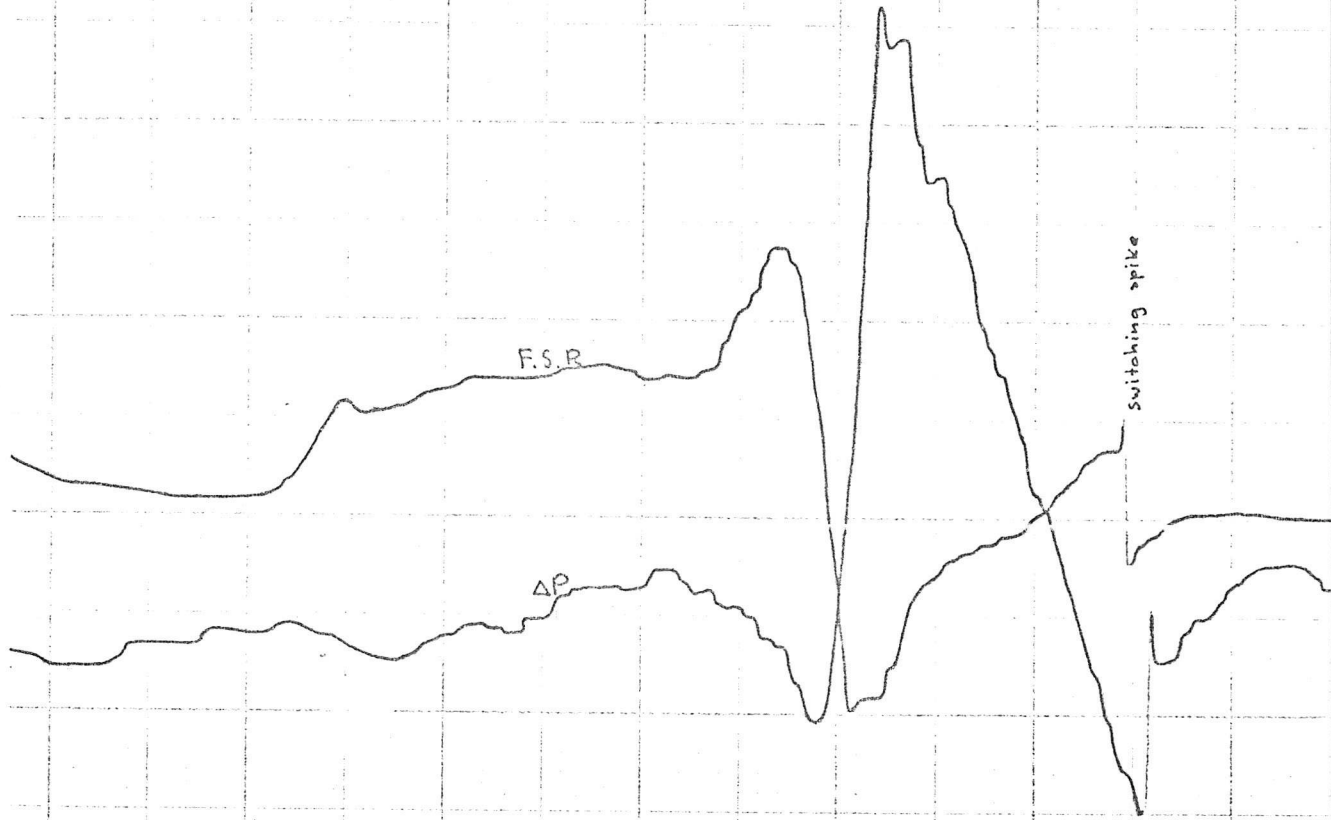


switching spike

1540

1570

L7S ; 2,5 Amp.  
inside loop  
 $1'' \approx 1Z_0 ; 0.5'' ; 500'$

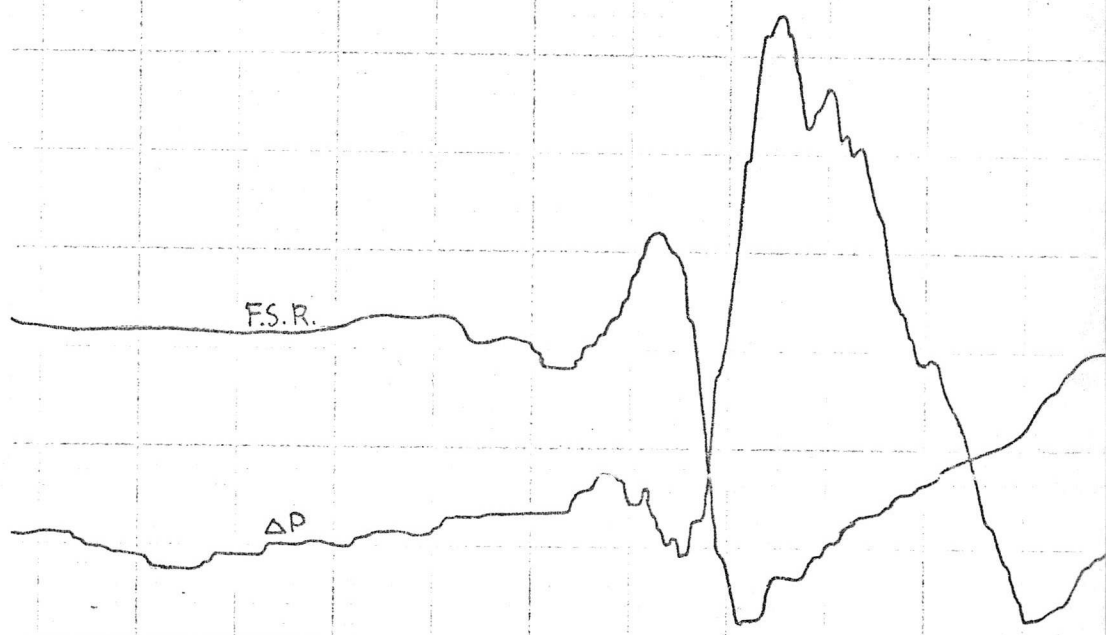


1410

1400

1380

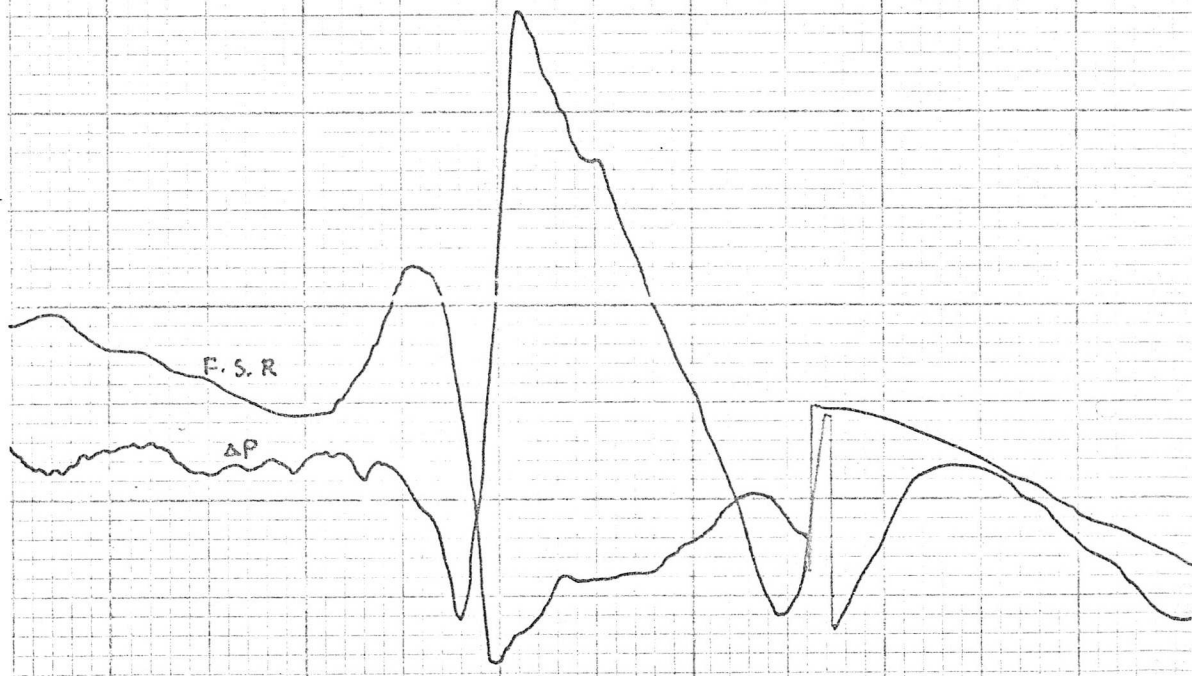
L7S : 1.0 A  
inside Loop  
1"  $\approx$  12' ; 0.5" ; 500'  
(this traverse not  
recovered on the  
mosaic)



1320

1300

L75 (1.Amp) Recon.  
inside Loop.  
1"  $\approx$  1% ; 0.5" ; 500'



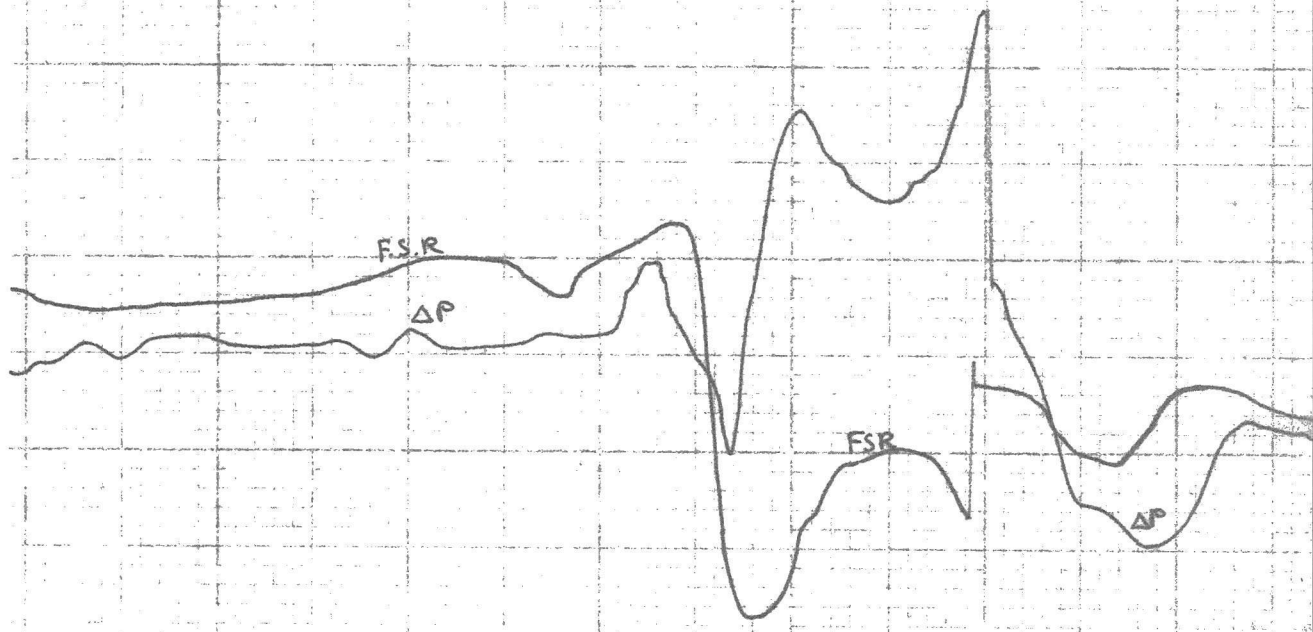
switching spike

30

10

465

12 1/2; 0.5; 500  
inside Loop

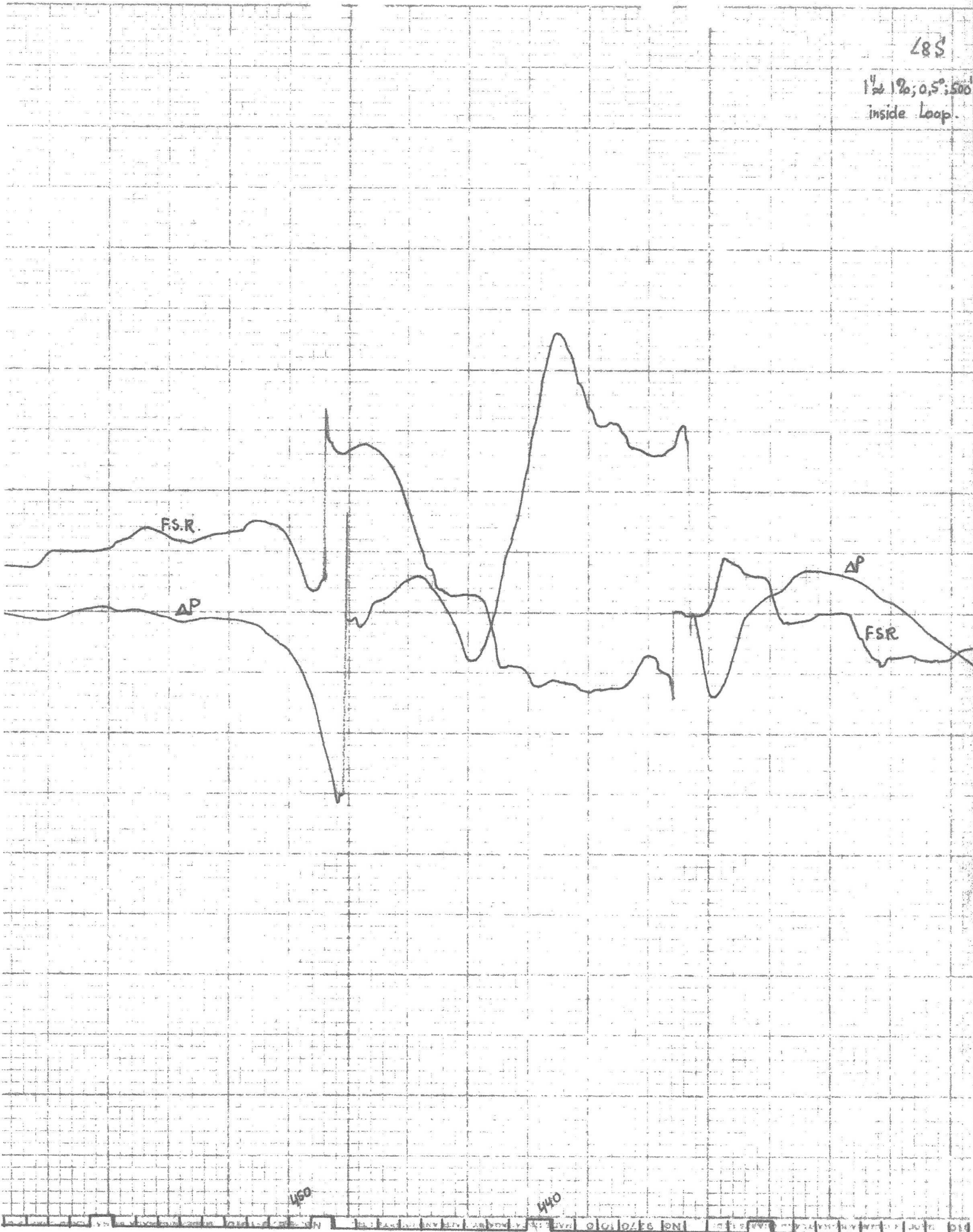


150

50

L8S

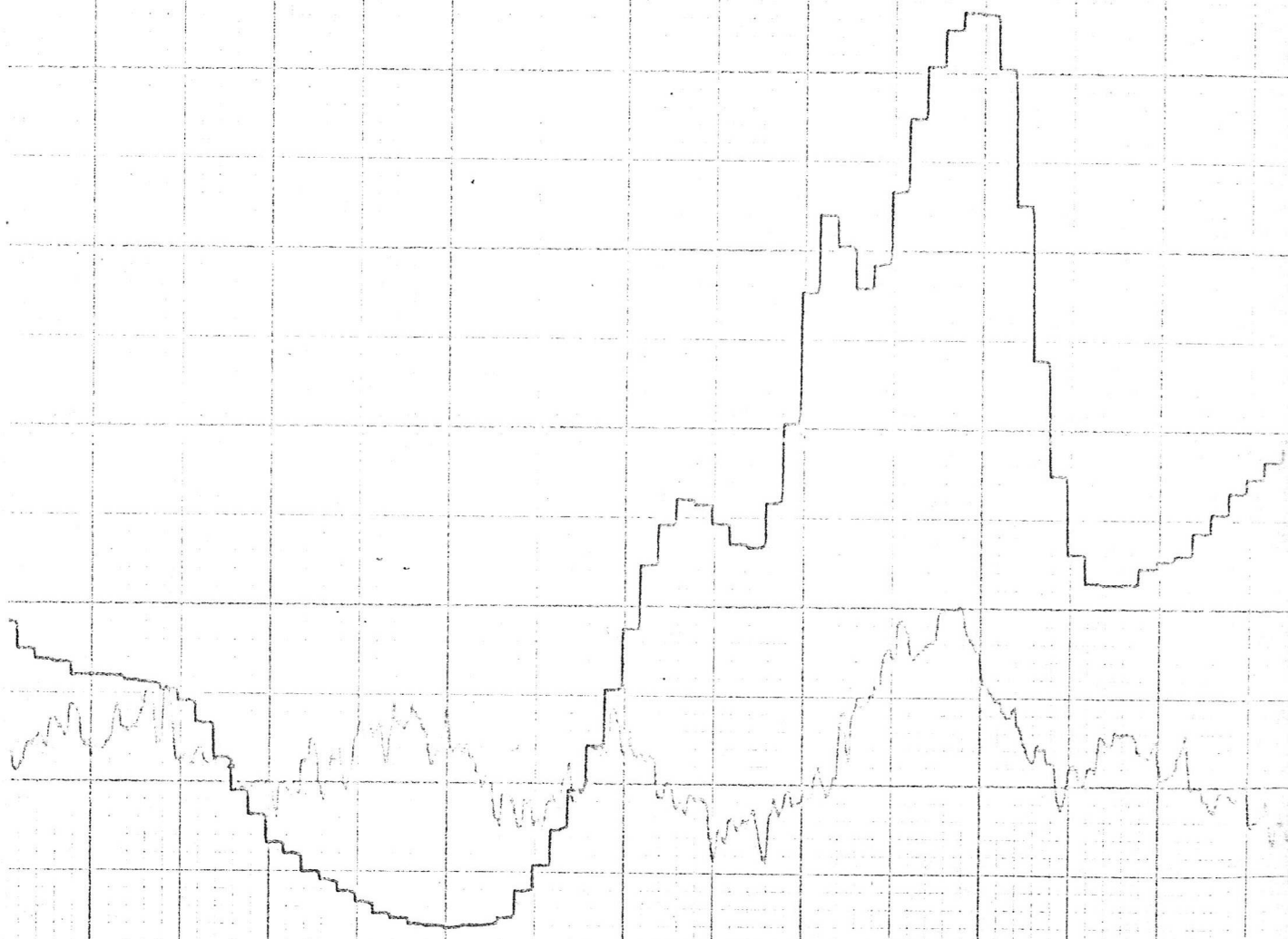
1 1/2 120; 0.5; 500  
inside Loop.



478

MAGNETOMETER  
ALTIMETER.

1000 f.s.



1530

1510