

JAN 21 1966

# KERR-ADDISON GOLD MINES LIMITED

(FOR INTER-OFFICE USE ONLY)

019076

To..... P.M. KAVANAGH..... From..... W.M. SIROLA.....

Subject VANGORDA PROPERTY, Y.T. - LONGITUDINAL GEOLOGIC SECTION. Date January 19th, 1966.

W.S.R.
K.C.G.
✓ J.H.S.
E.F.
R.D.S.
B.O.B.
P.M.K. ✓
G.W.M.
R.M.
C.K.W.
J.E.S.
G.P.R.
K.F.L.
J.L.B.
(E.C.J)

To illustrate our thinking on the possibility of additional deep ore on the Vangorda Property, Clyde Smith has drawn a 400-scale longitudinal section. (attached)

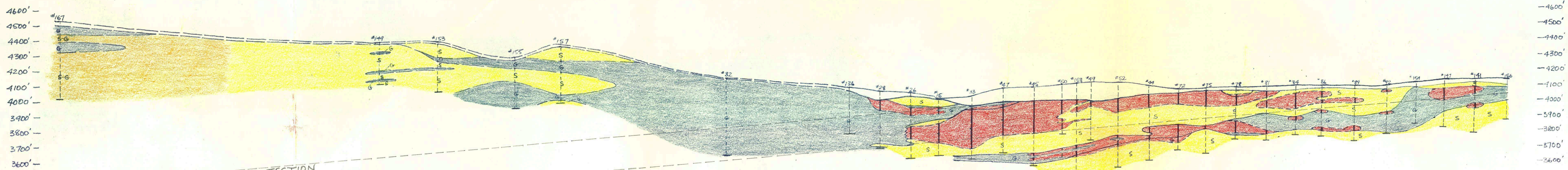
We feel that there is a distinct possibility that the lithologic unit containing the Vangorda ore could continue down-plunge in a northwestward direction. We feel that the section between D.D.H. 149 and 157 is potentially good hunting ground, and it is in this area that there is either a gravity anomaly or a gravity depression.

It is perhaps significant that the Dynasty mineralized zone also appears to have a distinct plunge to the southeast, but I do not know whether or not their small ore zone would be on the projection of the plunge of their main deposit.

The thick mass of graphitic schist in the centre of the longitudinal section appears to, at one time, have enveloped the top of the Vangorda ore zone, and seems to have acted as a barrier on the northwest end of the deposit. A similar situation could conceivably occur at the opposite end of this large mass of graphitic schist. In any case, I think this section will demonstrate what we have in mind.

William M. Sirola.

WMS:iw  
Encls:



UNTESTED DOWN PLUNGE PROJECTION  
OF PROBABLE FAVORABLE LITHOLOGIC  
UNIT MINERALIZED AT VANGORDA

LONGITUDINAL CROSS-SECTION  
OF VANGORDA ORE BODY AND DOWN-  
PLUNGE PROJECTION TO THE NORTHWEST  
FACING NORTHEAST  
SCALE 1" = 400'

- GRAPHITIC SCHIST
- SERICITE SCHIST
- GRAPHITIC SERICITE SCHIST
- SULPHIDE MINERALIZATION SHOWING DRILLING INTERSECTION
- GEOLOGIC CONTACT — DASHED WHERE JOINED OVER A DISTANCE
- OUTLINE OF MINERALIZATION
- #147  
DIAMOND DRILL HOLE

C.L. SHITH JAN. 19, 1966