

SPERRY SUN TESTS 019163 JAN, FEB /91

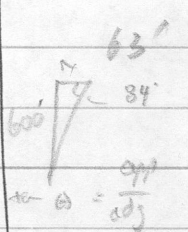
DY-PROJECT HOLES 91-DY-01 → 91-DY-05

91DY-01

Depth		Incl.	INCL.	Uncorr	Corr Az	
feet	meters	Out of Vert	relative -90	Az	+31°	
160	48.8	-0.8	-89.2	E 002 N	033°	JAN 12/91
268	81.7	-0.6	-89.4	W 10.45 N	020.55°	JAN 13/91
400	121.9	-0.87	-89.13	W 67 N	324°	JAN 13/91
530	161.5	-1.5	-88.5	W 64 N	327°	JAN 14/91
630	192.0	-3.05	-86.95	W 68 N	323°	JAN 14/91
770	234.7	-4.75	-85.25	W 72 N	319°	JAN 15/91
910	277.4	-5.45	-84.55	W 74 N	317°	JAN 15/91
1029	313.6	-6.25	-83.75	W 69 N	322°	JAN 16/91
1280	390.1	-7.00	-83.00	W 65 N	326°	JAN 18/91
1410	429.8m	-7.4	-82.6	W 61 N	330°	JAN 19/91
1580	481.6	10.5	-79.5	W 66 N	325°	JAN 28/91
1666	507.8	TEST NO GOOD				
1756	535.2	11.8	-78.2	W 62 N	329°	JAN 29
1825	556.3	12.3	-77.7	W 66.5 N	324.5°	JAN 30/
1876	571.8	12.7	-77.3	W 61 N	330°	
1976	602.3	12.7	-77.3	W 56 N	335°	
1991	606.9	END OF HOLE		(ABANDONED RODS IN HOLE)		

91DY-02

Depth		INCI	INCI	uncorr	Corr Az	
feet	Meters	Out of Vest	relative -90	Az	(+31°)	
206'	62.8	1.38	-88.62°	W22.5N	008.5	JAN 15/91
316'	96.3	1.13	-88.87°	W57N	334°	JAN 15/91
630'	192.0	} 76' suspect	> -84.0°	W74S	285°	suspect
736'	221.3		> 6' suspect	> -84°	W75S	296°
400'	121.9m	3.7	-86.3°	W75N	316°	JAN 19/91
550'	167.6m	5.6	-84.4°	W87N	304°	JAN 19/91
700'	213.4m	7.1	-82.9°	W79N	312°	JAN 19/91
~~~~~						
916'	279.2	8.25	-81.75	W74N	317°	JAN 19/91
1076	328.0	9.8	-80.2	W62N	329°	JAN 20/91
1156	352.3	10.2	-79.8	W59.5N	330.5°	JAN 20/91
1246	379.8	11.3	-78.7°	W58N	333°	JAN 20/91
1406	428.5	11.5	-78.5°	W58.5N	332.5°	JAN 22/91
1516	462.1	12.9	-77.1	W60N	331°	JAN 22/91
1726	526.1	12.7	-77.3	W48N	343°	
1816	553.5	12.3	-77.7	W49N	342°	JAN 24/91
1900	579.1	12.5	-77.5	W52N	339°	Jan 26/91
1900	579.1	END OF HOLE				



91-DY-03

SPERRY SUN.

TARGET BT

DEPTH		INCL.	-90°	AZ UNCORR.	AZ CORR.	DATE	
FEET	METERS						
166	50.6	0.33	-89.67	E 86 N	117° Az	JAN 91	
223	68.0	0.12	-89.88	E 51.5 N	82.5°		
336	102.4	1.5	-88.5	W 69 S	280°		
407	124.1	2.0	-88.0	W 71 S	282°		
537	163.8	2.0	-88.0	W 68.5 S	279.5°		
613	186.8	2.7	-87.3	W 75 S	286°	JAN 28	
661	201.5	2.9	-87.1	W 76 S	287°		
737	224.6	3.62	-86.38	W 83 S	294°		
817	249.0	3.65	-86.35	W 84 S	295°		
876	267.0	3.75	-86.25	W 82 S	293°		
957	291.7	4.25	-85.75	W 84 S	295°		
1057	322.2	4.72	-85.28	W 84.5 S	295.5		
1147	349.6	5.1	-84.9	W 82 S	293°	FEB 3/91	
1216	370.6	5.25	-84.75	W 82.5 S	293.5°		
1367	416.7	5.9	-84.1	W 78 S	289°	FEB 5/91	
1487	453.2	5.8	-84.2	W 85 S	296°		
1577	480.7	6.4	-83.6	W 86 S	297°	FEB 6/91	
1667	508.1	7.25	-82.75	W 85 S	296°	7/91	
1743	531.3	7.5	-82.5	W 88.5 S	299.5°		
1837	559.9	7.4	-82.6	W 83.5 N	307.5°		
1904	580.3	7.8	-82.2	W 88 S	299°	JAN 9/91	
2009	612.3	8.3	-81.7	W 85 N	306°		
2097	639.2	9.2	-80.8	W 87 N	304°		
2167	660.5	9.4	-80.6	E 10 N	021°		
2217	675.7	9.9	-80.1	W 86 N	305°		
2223	677.6	END OF HOLE					

91-DY-04

SPERRY SUN

DEPTH		INCL.	-90°	AZ UNCORR.	AZ CORR.	DATE
FEET	METERS					
107	32.6	0.75	-89.25	W 52 N	339°	^D JAN 29/91
207	63.1	1.1	-88.9	W 33.5 N	357.5°	^N JAN 29
307	93.6	1.45	-88.55	W 41 N	350°	^D JAN 30
407	124.1	1.7	-88.3	W 49 N	342°	^N JAN 30
507	154.5	1.8	-88.2	W 71 N	320	^D
707	215.5	-2.5	-87.5	W 61 N	330	^D
797	242.9	-2.7	-87.3	W 65 N	326	^N
997	297.8	3.4	-86.6	W 73.5 N	317.5°	^D FEB 3/91
1057	322.2	3.3	-86.7	W 62.5 N	328.5°	^N FEB 3/91
1237	377.0	5.2	-84.8	W 67.5 N	323.5°	^N FEB 5/91
1317	401.4	5.5	-84.5	W 78 N	313°	^N 6/91
1407	428.9	6.35	-83.65	W 85.5 N	305.5°	^D
1595	486.2	7.7	-82.3	W 67 N	324°	^N FEB 7/91
1680	512.1	7.8	-82.2	W 69.5 N	321.5°	^D FEB 12/91
1787	544.7	7.9	-82.1	W 73 N	318°	^D 9/91
1920	585.2	8.3	-81.7	W 79 N	310°	FEB 12/91
<del>2007</del>	<del>611.7</del>	<del>8.5</del>	<del>-81.5</del>	<del>W 45 N</del>	<del>346°</del>	^N FEB 11/91
2075	632.5	-9.1	-80.9	W 72.5 N	316.5°	FEB 12/91
2147	654.4	-10.0	-80.0	W 77 N	312°	FEB 13/91
2213	674.5	-10.3	-79.7	W 61 N	328°	
2297	700.1	10.15	-79.85	W 65 S	276°	FEB 14
2327	709.3	END OF HOLE				

91-DY-05

SPERRY SUN

TARGET BG

DEPTH		INCL.	-90°	A ₂ UNCORR.	A ₂ CORR.	DATE
FEET	METERS					
127	38.7	0.75	-89.25	E 51 S	160°	FEB 5/91
235	71.6	0.85	-89.15	E 28 S	183°	
327	99.7	1.05	-88.95	E 24 S	187°	FEB 6/91
427	130.1	1.8	-88.2	W 12 S	223°	
487	148.4	1.8	-88.2	W 18 S	229°	FEB 7/91
584	178.0	2.0	-88.0	W 25 S	236°	8/91
675	205.7	2.7	-87.3	W 03 S	214°	8/91
785	239.3	2.95	-87.05	W 40.5 S	251.5°	
887	270.4	3.2	-86.8	W 40 S	251.°	
985	300.2	3.2	-86.8	W 39.5 S	250.5°	
1073	327.1	3.0	-87.0	W 45 S	256°	
1175	358.1	3.2	-86.8	W 53 S	264°	FEB 11/91
1264	385.3	2.9	-87.1	W 54 S	265°	
1375	419.1	3.3	-86.7	W 55 S	266°	FEB 12/91
1467	447.1	3.45	-86.55	W 61 S	272°	
1545	470.9	3.7	-86.3	W 56.5 S	267.5°	
1645	501.4	4.75	-85.25	W 72 S	283°	FEB 13
1737	529.4	5.3	-84.7	W 81 S	292°	FEB 14
1817	553.8	5.2	-84.8	W 83 S	294°	14
1905	580.6	5.7	-84.3	W 87 S	298°	FEB 15
1986	605.3	6.0	-84.0	W 80 N	311°	
2065	629.4	6.2	-83.8	W 89 S	300°	FEB 16
2135	650.7	6.3	-83.7	W 86 N	305°	
2213	674.5	7.7	-82.3	W 82 N	309°	FEB 17
2315	705.6	8.6	-81.4	W 85 N	306°	FEB 18
2329'	709.9	END OF HOLE				