



**Curragh
Resources Inc.**

019205

P.O. Box 1000
Faro, Yukon
Y0B 1K0
Tel.: (403) 994-2600

TELECOPIER COVER LETTER

TO:

LEE.

TELECOPIER NO. 16686518

5F → 5B7

FROM:

NAME: J. Zbertnoff

5D →
int.

CURRAGH RESOURCES INC., Box 1000, Faro, Yukon, Y0B 1K0

TOTAL NO. OF PAGES: 3
(Including Cover Letter)

DATE: July 24

TIME: _____

OPERATOR Yng.

5C

We are transmitting from the following:
Xerox FAX 7020 - 24 hours (403) 994-2664

If you do not receive all pages please call back as soon as possible.

MESSAGE

FOLLOWING will be a plan view of
Section 15+00E (1:1000) and a plan of the
Dy area (1:2000).

The section is straightforward, no comments required.

The plan displays the 3 point problem for
the fault. The pierce point for the fault is
intersected in Dy 90-1 occurs at an elevation
of 1022m ABL. The strike lines for the
fault do not coincide with this data. Therefore
the strike of the fault may be oriented in
a "more" North-South trend. This may require

Dy 90-2 go significantly deeper than originally estimated
ie greater than 470'.

901400N

55

+ 1100m

78X05
711.3
(-.59)

89DS-02
392.3
(1.62)

78X1089DS-01
705.0 452.0
(-.61)(11.28)

Dy 90-1

TRICORNER - NO RECOVERY / 11A
[SF] / SCB 6A

11A / TRICORNER - NO RECOVERY
SCD / (SC4+) (SB76 40) (SD FIELD) 50:45:05

(SB76) 80:20 (SCB 6A (SD FIELD)) / SCB 7A

SCD / (SB0) (SB70 (SD FIELD)) 40:20:40

& MAGNETITE & BIOTITE PYROXENITE / SCB8

SB0 42 / (SD) MINOR

6A (SB76) 95:05 (SF 6A 6A (SD FIELD)) / SCB 6B

SC + Pyroxenite

& MAGNETITE PYROXENITE / SCB6

(SB76 (SD FIELD)) 95:05 / SCB6

"ZEBRA ROCK" / SC0

SD0 / SD0

6B (SB76) 95:05 (SF 6B 6B (SD FIELD)) / SCB 6C

& MAGNETITE PYROXENITE / SCB6

(SB76 (SD FIELD)) 95:05 / SCB6

6B (SB76) 95:05 (SF 6B 6B (SD FIELD)) / SCB 6D

& BIOTITE & MAGNETITE PYROXENITE / SC6

6B (SB76) 95:05 (SF 6B 6B (SD FIELD)) / SCB 6E

& BIOTITE & MAGNETITE PYROXENITE / SC6

(SD FIELD) / SB76

(SD FIELD) / SB76

95:05 (SD FIELD) 90:10 / SCB6

7 MINOR (SD) MINOR / SB52

(SB76 6A (SD FIELD)) 50:10 / SCB 6A

6A MINOR / SB26

(SB21) 50:50 / SD48

SB GOUGE / SB26

(10E ALTERED) / 10E98

10E098

SB28 6A

SB28 6A

SB28 6A

SB28 6A

SB28 6A

SB28 6A

SB28 6A

SD0 / (SC4+) (SB76 40) (SD FIELD) 50:45:05

SD0 / (SB0) (SB70 (SD FIELD)) 40:20:40

SB0 / (SD) MINOR

SD0 / (SB0) (SB70 (SD FIELD)) 40:20:40

SB0 / (SD) MINOR

SD0 / (SB0) (SB70 (SD FIELD)) 40:20:40

SB0 / (SD) MINOR

SD0 / (SB0) (SB70 (SD FIELD)) 40:20:40

SB0 / (SD) MINOR

SD0 / (SB0) (SB70 (SD FIELD)) 40:20:40

SB0 / (SD) MINOR

SD0 / (SB0) (SB70 (SD FIELD)) 40:20:40

SB0 / (SD) MINOR

SD0 / (SB0) (SB70 (SD FIELD)) 40:20:40

SB0 / (SD) MINOR

SD0 / (SB0) (SB70 (SD FIELD)) 40:20:40

SB0 / (SD) MINOR

SD0 / (SB0) (SB70 (SD FIELD)) 40:20:40

SB0 / (SD) MINOR

SD0 / (SB0) (SB70 (SD FIELD)) 40:20:40

SB0 / (SD) MINOR

SD0 / (SB0) (SB70 (SD FIELD)) 40:20:40

SB0 / (SD) MINOR

SD0 / (SB0) (SB70 (SD FIELD)) 40:20:40

SB0 / (SD) MINOR

SD0 / (SB0) (SB70 (SD FIELD)) 40:20:40

SB0 / (SD) MINOR

SD0 / (SB0) (SB70 (SD FIELD)) 40:20:40

SB0 / (SD) MINOR

SD0 / (SB0) (SB70 (SD FIELD)) 40:20:40

+ 1000m

SC + Pyroxenite

East
139.3m

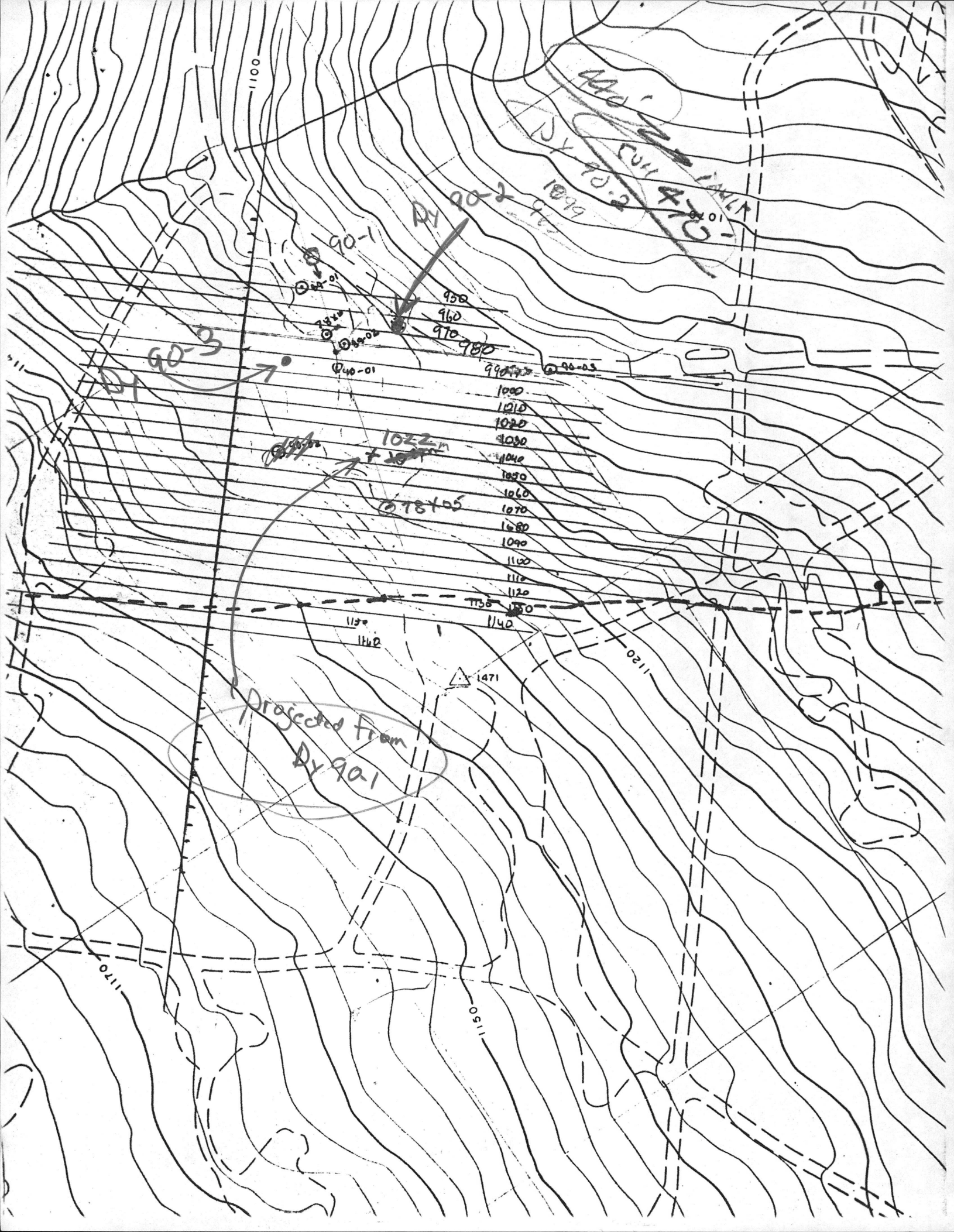
SB2

10E

SB2

0F0

SB0 42 / RUBBLE GOUGE





Curragh
Resources Inc.

P.O. Box 1000
Faro, Yukon
Y0B 1K0
Tel: (403) 994-2600

TELECOPIER COVER LETTER

TO:

LEE

TELECOPIER NO.

668 6518

FROM:

NAME:

J. Zbeetnoff

CURRAGH RESOURCES INC., Box 1000, Faro, Yukon, Y0B 1K0

TOTAL NO. OF PAGES:

8

DATE:

July 27

TIME:

9:10

OPERATOR

MS

(Including Cover Letter)

We are transmitting from the following:

Xerox FAX 7020 - 24 hours (403) 994-2664

If you do not receive all pages please call back as soon as possible.

MESSAGE

Following will be 3 pt.
problem sol's and assorted plans.
All figures are at 1:2000
+ photocopier & fax distribution

[Handwritten signature]

LEE:

July 27/90

FOLLOWING WILL BE THE 3-pt.
problems I have calculated. A total of
Four sets have been calculated, all
giving the general trend of NE,
dipping NW at approx 50-52°.

The range of possibilities these
calculations indicate are:

050°/51°NW to 074°/50°NW

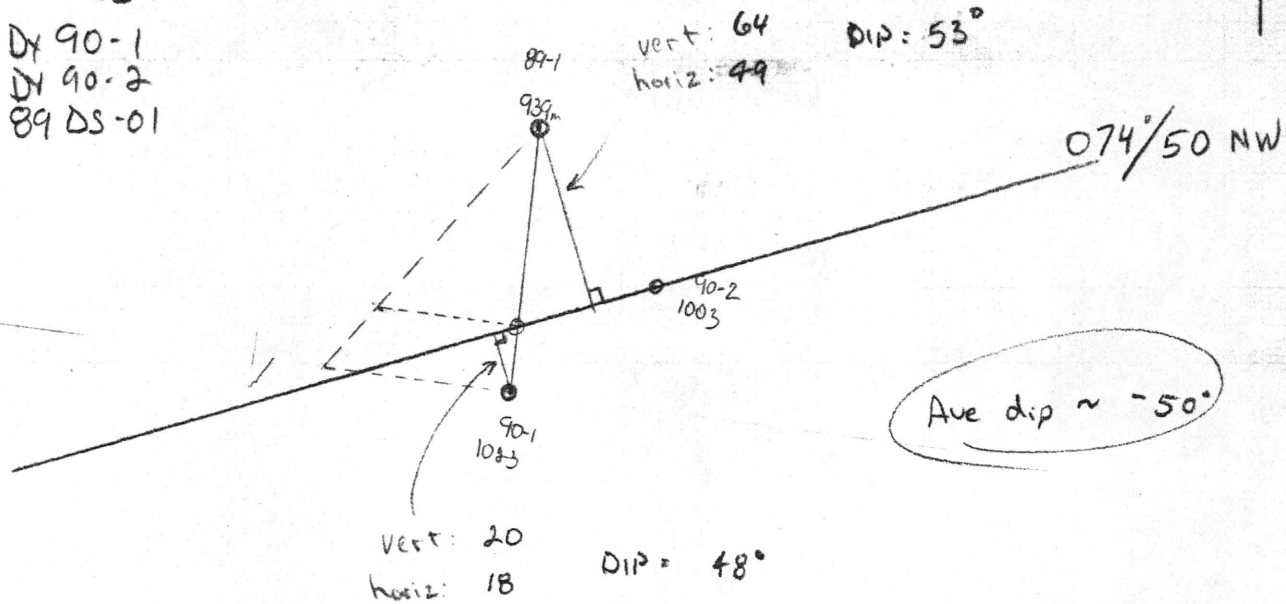
I will determine the expected ^{range of} depths
of the fault in DY 90-3 and submit
this to you as soon as they
are calculated - hopefully this will be
today

John Z

Using:

Dx 90-1
Dx 90-2
89 DS-01

N
↑
1:2000

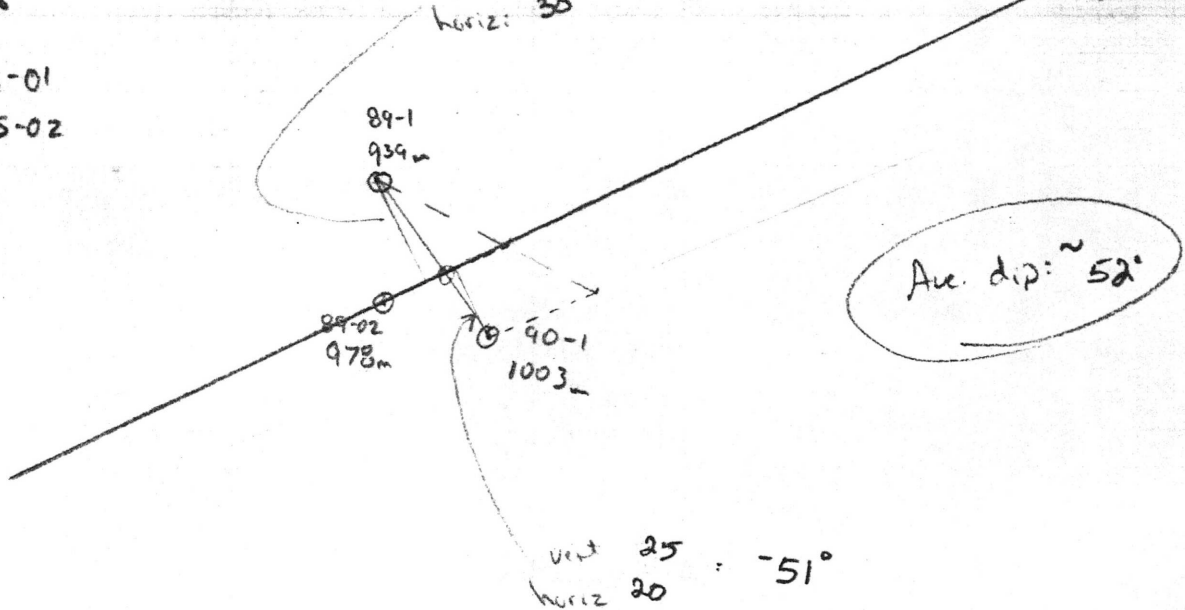


Using:

89 DS-01
89 DS-02
90-1

vert: 39
horiz: 30
DIP: 52°

065°/52° NW



Using:
 78X10
 90-1
 90-2

1:2000



vert 39
 horiz 26
 DIP: 56°

069/56NW

Ave Dip ~ 56°

78X10
 964

90-1
 1003

90-1
 1023

vert: 20
 horiz: 14
 Dip: 55°

Using:

89 DS-01
 78X10
 90-2

vert 25
 horiz 22
 DIP: 49°

050/51 NW

Ave Dip ~ 51°

89-1
 939

90-2
 1003

78X10
 964

vert: 39
 horiz: 29
 DIP: 53°

