

Coordinates for D.D.H.
Faro Zone #1

Hole#	North	East	Depth.
✓ 66-1	10,601.82	12,800.76	✓357.6
✓ 66-2	9,599.70	13,999.88	✓581
✓ 66-3	9,200.03	14,398.34	✓744
✓ 66-4	9,999.70	14,000.00	✓703
✓ 66-5	8,800.14	13,999.49	✓673
✓ 66-6	9,599.46	14,800.00	✓766
✓ 66-7	9,200.26	14,798.34	✓814
✓ 66-8	9,799.61	13,798.95	✓1382
✓ 66-9	10,199.64	13,999.96	✓551
✓ 66-10	8,799.34	14,799.49	✓638
✓ 66-11	9,199.34	15,199.66	✓757
✓ 66-12	9,999.94	13,200.00	✓409
✓ 66-13	10,201.91	12,800.64	✓529
✓ 66-14	10,199.61	13,799.96	✓576
✓ 66-15	10,199.88	13,400.09	✓463
✓ 66-16	10,200	13,200	✓350
✓ 66-17	10,801.74	12,800.82	✓414
✓ 66-18	10,199.67	14,199.96	✓486
✓ 66-19	10,601.92	12,600.53	✓365.5
✓ 66-20	10,199.97	13,000.07	✓377
✓ 66-21	10,799.97	13,200.36	✓306
66-22	9,797.87	14,198.95	✓356
66-23	9,801.35	13,398.95	✓545
66-24	10,599.88	13,400.27	✓373
66-25	10,601.28	13,000.27	✓396
66-26	9399.91	13,397.97	✓556
66-27	10,171.70	14,574.60	✓475
66-28			
66-29			
66-30			
66-31			
66-32			
66-33			
66-34			
66-35			

Coordinates for D.D.H
Faro Zone #1.

Hole #	North	East	Depth.
65-1	10,401.90	12,800.7	✓ 353.5
65-2	10,040.84	12,397.77	✓ 425.0
65-3	11,199.76	13,600.66	214.0
65-4	10,399.76	13,600.18	✓ 544.0
65-5	9,999.82	13,600.00	154.0
65-5A	9,999.8	13,600.00	420.0
65-6	9,599.58	14,399.88	✓ 586.0
65-7	9,999.58	14,400.00	✓ 522.0
65-8	9,599.82	13,599.88	615.0
65-9	9,199.80	13,998.30	✓ 477.0
65-10			
65-11	10,399.94	13,200.12	✓ 555.0
65-12	9,199.57	13,598.34	✓ 396.0
65-13	10,399.50	14,400.20	✓ 418.0
65-14	10,399.70	14,000.12	✓ 293.0
65-15			
65-16			
65-17	9,999.46	14,800.00	✓ 490.0
65-18			
65-19			
65-20			
65-21	10,000.06	12,800.00	
65-22			
65-23			
65-24	10,515.00	10,500.00	✓ 381.0
65-25	8,135.00	9,490.00	✓ 826.0

Coordinates for D.D.H
Faro Zone # 2

Hole #	North	East	Depth.
65-50	5836.13	15,570.94	373.0
65-51	5640.36	15,775.51	161.0
65-52	6635.58	15,540.80	339.0
65-53	6,605.43	14,741.37	426.0
65-54	5,606.07	14,779.03	237.0
65-55	7,035.29	15,525.74	233.0
65-56	4,806.22	14,809.18	500.0
65-57	6,221.10	15,156.41	283.0
65-58	5,663.17	16,378.02	270.0
65-59	5,648.12	15,978.30	296.0
65-60	5,236.50	15,593.50	317.0
65-61	5,266.65	16,392.97	270.0
65-62	5,617.99	15,178.86	206.0
65-63	5,636.25	15,578.47	
65-68	5,266.65	16,393.11	
65-69	5,678.69	16,777.72	
65-70	4,821.75	15,208.87	

check coords
5205.94N, 14,794.12 E

-DRILL HOLES-

DDH	NORTH	EAST	ELEVATION
(#2) 66-27	10171.70	14574.60	4155.1
(#4) 66-29	9599.82	13199.88	4190.7
⑥ 66-40	10395.21	12405.70	4304.3
⑦ 66-37	10201.91	12600.7	4294.4
66-42	8995.12	13791.89	4034.4
66-63	5701.1	16782.0	3937.5
66-30	9793.04	14536.25	4124.79
66-38	10803.42	13598.42	4310.63
101-66-32	10499.89	13301.18	4293.22
102-66-36	10799.76	13600.42	4321.42
103-66-41	10496.53	13701.99	4280.27
104-66-39	10298.52	13900.44	4236.53
105-66-35	10095.84	14099.59	4178.85
106-66-49	8799.34	14399.49	4059.47 ✓
107- N.D.			
108-66-48	10496.84	12504.43	4331.37 ✓
109 N.D.			
110-66-44	10502.10	13100.91	4298.61
111-66-45	10698.61	12499.09	4360.67
112- N.D.	(10801.86)	(12400.82)	(4371.53)
113-66-46	9398.92	14599.93	4161.05
114- N.D.			
115- N.D.			
116-66-52	8996.91	14199.10	4038.84
117- N.D.			
118-66-51	10704.01	12696.89	4358.91
119 66-53	10098.61	14501.86	4140.85
120 66-57			
121 - N.D.			
122-66-54	9300.21	13297.36	4136.09
123-66-55			

- DRILL HOLES - Nov. 22/66

Do not Destroy

Alg.

A = 66-40

B = 66-37

2 - 66-36

~~3 - 66-41~~

~~4 - 66-39~~

5 - 66-34

④ - 66-29

⑤ 66-31

④ - 66-43

Ac. Rig ⑤ ~~66-49~~

⑥ ~~66-47~~ (65-303)

101 66-32

102 - 66-36

103 - 66-41

104 - 66-39

105 - 66-35

✓ 106 66-49 Atlas Copco Rig

107 66-47

✓ 108 66-48

109 not Drilled

✓ 110 66-44

PR1, 2, 3 -

✓ 111 66-45

~~PR~~

✓ 112 - Not Drilled

✓ 113 66-46

✓ 114 - Not Drilled

✓ 115 - Not Drilled

✓ 116 66-52

✓ 117 - Not Drilled

✓ 118-66-51 Not Drilled

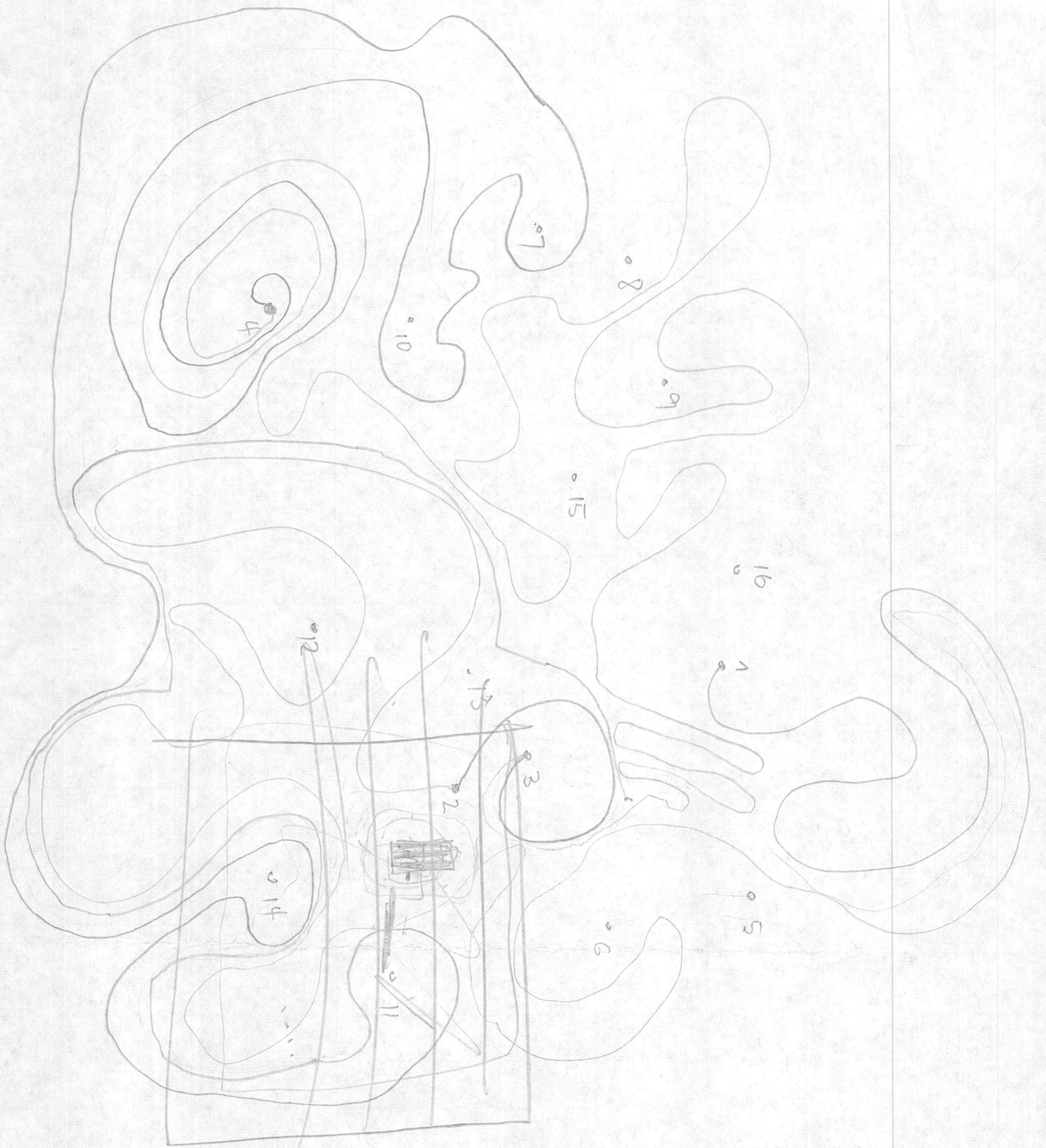
✓ 119 - 66-53

✓ 120 - 66-57

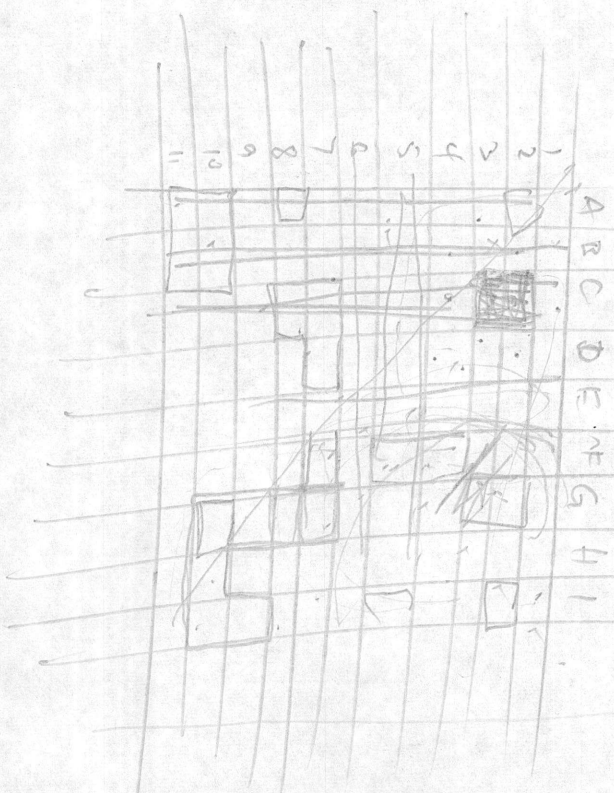
✓ 121 - Not Drilled

✓ 122 - 66-54

✓ 123 - 66-55



4 = 1
 3 = 2
 2 = 4
 1 = 8



A 13

A

	N. COORDINATES E.		COLLAR	OVERBLOW	Hole depth
RH 71-041	20+00N	L112W	4500	50	73
71-042				100	100
-043	0+00	L112W		55	85
-044	10+00S	112W		20	47
-045	20+00S	112W		20	66
-047	40+00N	112W		150	150
-048	30+00N	112W		150	150
-049	80+00N	112W		42	95
-050	70+00N	112W		32	95
-051 (A?)	60+00N	112W		100	200
-052	50N	136W		130	157
-053	20N	136W		10	52
-054	10N	136W		10	79
-055				86	105
-056				40	40
-057	20S	136W		20	64
-058	30S	136W		28	50
-059				55	70
-060				12	190
-061				30	200
-062				20	85
-063				8	45
-065	20S	160W		0	30
-065A	20S	160W		20	200
-066	30S	160W		5	30
-066A	30S	160W		0	403
-067	40S	160W		10	430
-080				345	345
-081				60	30
-082				30	60
-083				10	45
-084				10	30
-087				210	210
-088				0	30
-089				>190	190
-090				>100	100
-091				0	30
-092				0	30
-093				0	30
-094				0	30
-096				?	45
-097				0	20
-098				0	30
-099				?	45
-100				10?	30
-101				0	20
-103				10?	30
-109				170?	150
-110				0	30
-111				20?	30
-202				0	20
-203				20	45
-204				>60?	70
RH 71-206				0	50

	NORTH	EAST	COLLAR	OVERALL		
65-24	10515	10500	4301	53	✓	depth of hole 381
66-C1	10182	16533	4450	30	✓	540
66-D1	7893	19048	4019	15	✓	343
66-D2	7360	18871	3972	10	✓	796
66-D3	7914	19864	3950	5	✓	475
66-D4	8195	17495	4170	20	✓	521
66-DS01	9313	9519	4060	33	✓	996
66-DS-03	9649	11192	4250	6	✓	1000
66-MS-1	7251	10000	3909	4	✓	1000
66-MS-2	7100	8900	3881	21	✓	1000
66-MS-3	7350	11000	3901	13	✓	646
66-MS-4	6246	9979	3784	16	✓	801
66-PR-1	24 S			25	✓	275
66-PR-2	28 S	15+50		40	✓	782
66-PR-3	28 S	10+50		37	✓	440
67-F-1	11535	9585	4452	6	✓	703
67-F-2	2700 N	32 W	4554	6	✓	820
67-F-4	300 N	600 W		20	✓	803
67-G-1	2756	10211				501
68-PR-1	5740	20230		103	✓	1002
68-PR-2	6350	20050		99	✓	1000
70-DS-01						
70-F1				57	✓	1000
71-207				5	✓	678 ✓
71-212				35	✓	500
73X01				45	✓	650
456-75-10				10	✓	955
456-75-13	5367	11096	3812	30	✓	2632
79F-01	29 N	156 W		23.9 ⁽⁷⁸⁾	✓	488 m ✓
79F-02	2 N	140 W		19.1 ⁽⁶³⁾	✓	451 m ✓
79F-03	8 N	112 W		41 ⁽¹³⁷⁾	✓	1597 ✓
LORH 1				0	✓	380
LORH 2				0	✓	340
LORH 4				0	✓	250
LORH 3				0	✓	350
BOF-01	6911756.7	583988.0	3500	6 m ⁽²⁰⁾	✓	462 m
BOF-02	6912716.6	583226.3	3500	66 m ⁽²¹⁷⁾	✓	472 m
BOF-03	6913646.2	581306.7	3490	70 m ⁽²³⁹⁾	✓	873 m
ADIT 1	8,154.9	12,922.6	3967.8	47		hole depth 60.0
" 2	8,258.9	12,928.4	3978.2	49		" " 70.0

APPROX

3885
109
3391