

KERR ADDISON MINES LIMITED

(FOR INTER-OFFICE USE ONLY)

019288-9

6E

To M. D. ROWSWELL

From W. M. SIROLA

Subject GRUM JOINT VENTURE:

Date 27th July 1976

Longitudinal Sections 6S to 10N with Superimposed
Pit Outlines to 1200m and 1100m

I.D.B.
A.H.C.
P.S.C.
W.J.
D.A.L.
S.P.
M.D.R.
J.B.S.

FILE


These sections, with Al Brown's pit outlines, will enable you to have a better idea of the open pit concept for this deposit.

I am personally not optimistic about an 1100 metre pit and even the 1200 metre pit leaves much to be desired. However, limited open pits have proved very useful in some operations, such as Western Mines, where the dimensions of the higher grade material have been no greater than those on the Grum deposit.

When the metallurgy is resolved, we would appear to be justified in having a consultant familiar with small pits give us his impressions of the 1200 metre pit on the Grum. If indeed we can mine grades equivalent to those underground by selective mining in the pit, then the exercise would appear to be worthwhile.

Please note that the average grade of the material coloured in purple is approximately 14% combined PbZn. Should we elect to pursue the exercise further, we can then enlarge these purple areas by dropping the grade to say 10% with the thought that such a grade would still be profitable and would make for easier mining.

Apparently there is some possibility that the metallurgical sample we have sent to Japan for bench tests can be processed as early as the end of August.


W. M. Sirola

WMS:1mp

enc: 9 Long sections, scale 1:2500

JUL 29 1976

COPY

DL
Gruen
4-9
6E

30th July 1976

Mr. A. McDougall
Canadian Mine Services
745 Clark Drive
VANCOUVER, B.C.

Dear Angus,

Pursuant to our telephone conversation of 28th July, I enclose a chart drawn by F. Chow to indicate how the various colours shown on T. Takeda, J. Paxton and F. Chow's cross sections can be simplified for model purposes. It is suggested here that sections 62 and 64 which have been drilled in detail be coloured in this manner for all models:-

0 - 6% PbZn	Blank
6 - 10%	Red
10 - 16%	Purple

The shape of each section drilled in detail should be that compiled by F. Chow who has devoted a great deal of time to this effort.

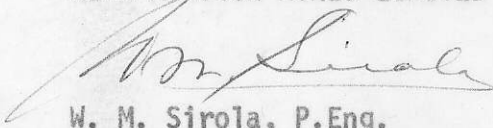
In as much as T. Takeda's sections, on which the model was based, showed only two grades of mineralization in colour (red and purple), then by maintaining this colour scheme, nobody will be confused when viewing the model.

For ore grade calculations and for mining purposes, F. Chow's sections will have 8 separate colours, but the model should be kept simple and uncluttered by the use of the above colour scheme.

We recommend that section 62 and 64 be redrafted on plastic, coloured in accordance with the attached chart, and sent to Toronto to replace the two which are already in the model.

Yours truly,

KERR ADDISON MINES LIMITED


W. M. Sirola, P.Eng.
Regional Exploration Manager

WMS:1mp
enc:

cc: D.A. Lowrie
M.D. Rowswell

Kerr Addison Mining Limited

D. Lawrence

GRUM Joint Venture
Vargonda Creek Area, Y.T.

GRUM DEPOSIT

RECONCILIATION OF COMBINED Pb+Zn ASSAY, GRADE COLOR CODE ON MAPS
FOR PURPOSE OF D.D. HOLE MODEL MADE AT C.M.S.

COMBINED Pb + Zn GRADE	T. TAKEDA'S (Surface D.D. Hole X-Section) Geology + Grade COLOR CODE	J. PAXTON'S (Undergrd. D.D. Hole + Surf. X-Section) Geology + Assays ± Wt. Av. COLOR CODE	F. CHOW'S (Surface + Undergrd. D.D. Hole) Wt. Av. + Reserve X-Section COLOR CODE	FOR PURPOSE OF MODEL COLOR CODE *
0 - 1			lemon yellow	
- 2				
- 3	orange	blank (white)	yellow ochre	black
- 4				
- 5		brown	gold	
- 6				
- 7		orange	orange	
- 8	red			red
- 9		red	red	
- 10				
- 11		purple	purple	
- 12				
- 13	purple	violet	violet	purple
- 14				
- 15		blue		
- 16			blue	
16 plus		black		

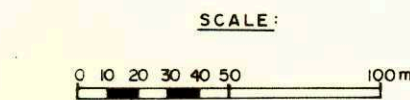
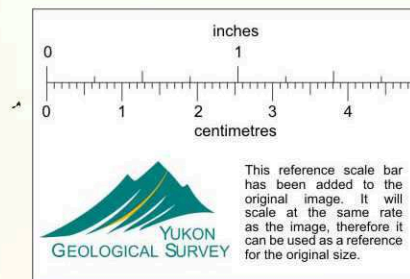
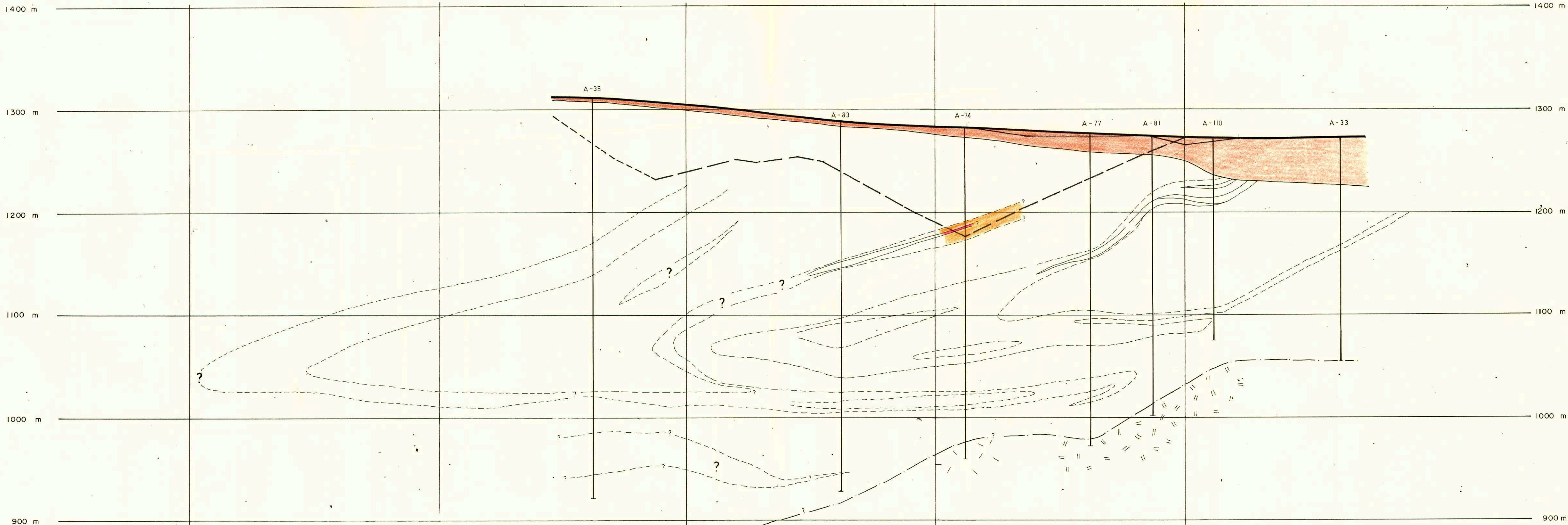
by F. Chow
July 28, 1976

* This color code is essentially the same as that used on the 1975-76 model based on T. Takeda's 1975-76 geological interpretation and grades. The difference in the division at 5 and 5% is insignificant at present and will not affect the appearance of the model when old x-sections are being replaced by new ones.

F.C.

NW

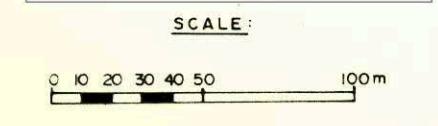
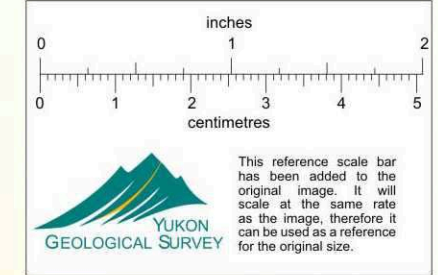
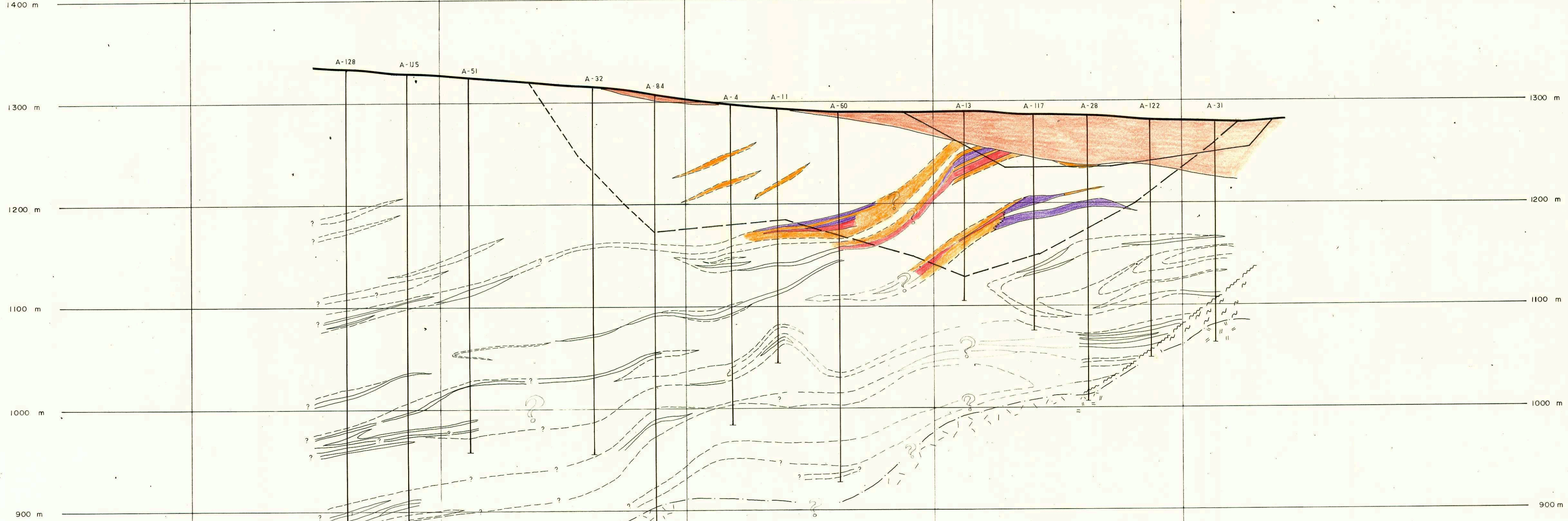
SE



KERR-ADDISON MINES LTD	
GRUM DEPOSIT	
LONGITUDINAL SECTION	
SECTION 2 + 00 S	
SCALE	
1 : 2 500	
PROJECT No.	N.T.S. 105 K 6
DRAWN BY: P. HAILLOT	DATE: MAY-JUNE 1976
COMPILED BY: T. TAKEDA	

NW

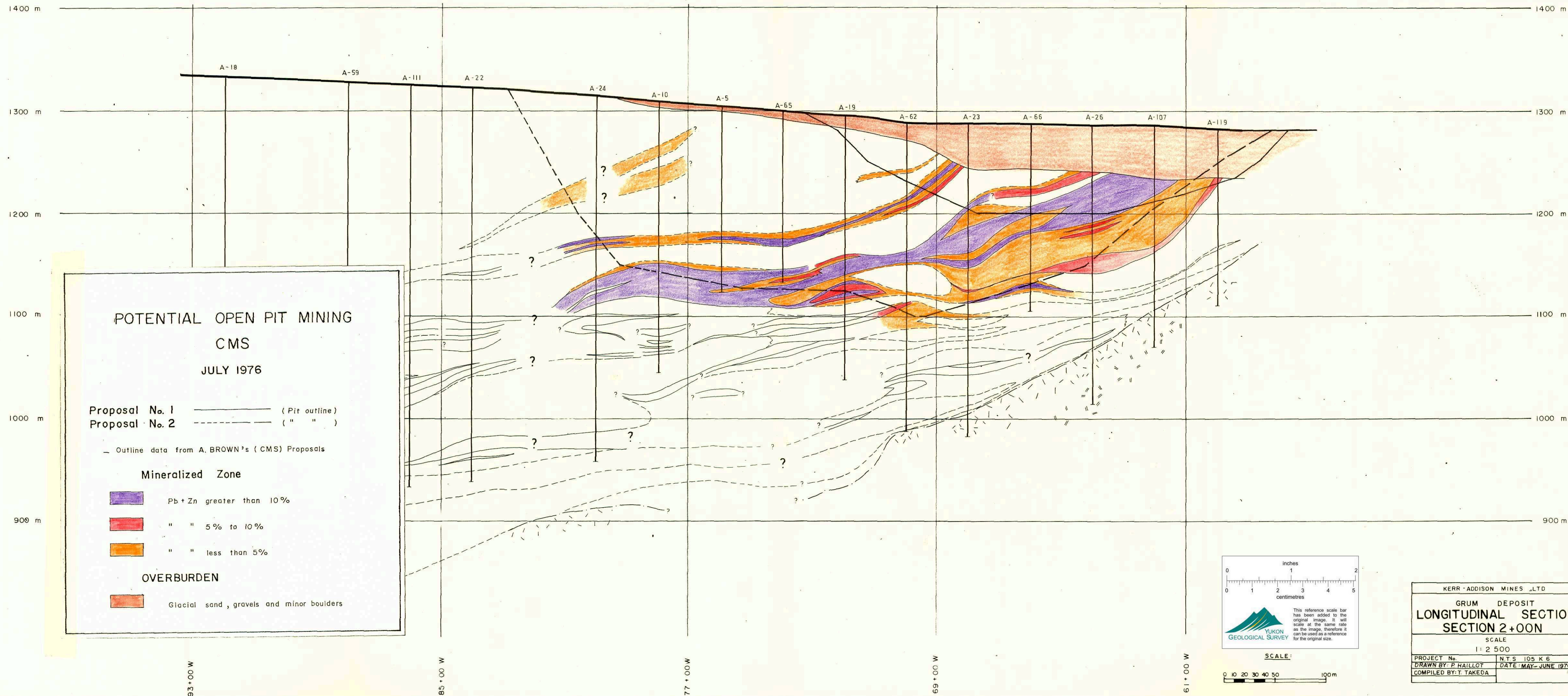
SE



KERR-ADDISON MINES LTD	
GRUM DEPOSIT	
LONGITUDINAL SECTION	
SECTION 0+00	
SCALE	
1:2500	
PROJECT No.	N.T.S. 105 K 6
DRAWN BY: P. HAILLOT	DATE: MAY-JUNE 1976
COMPILED BY: T. TAKEDA	

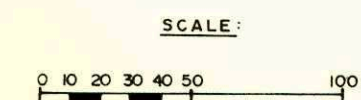
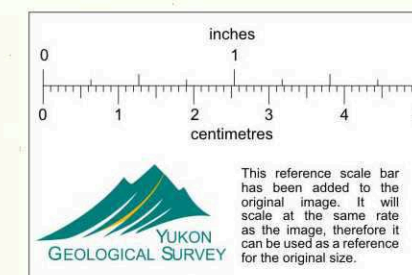
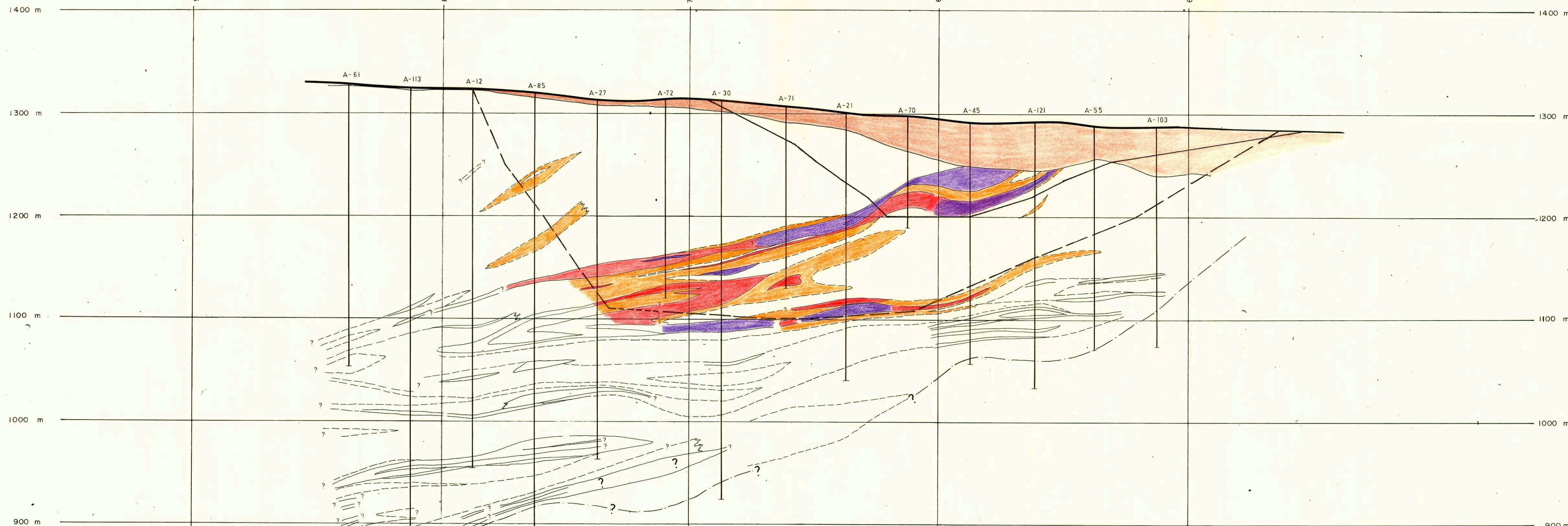
NW

SE



NW

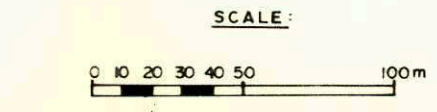
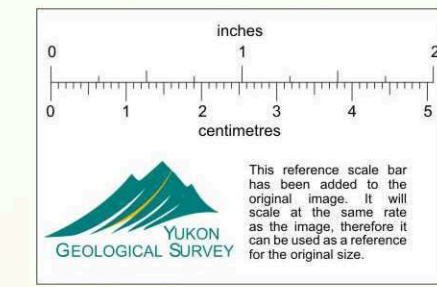
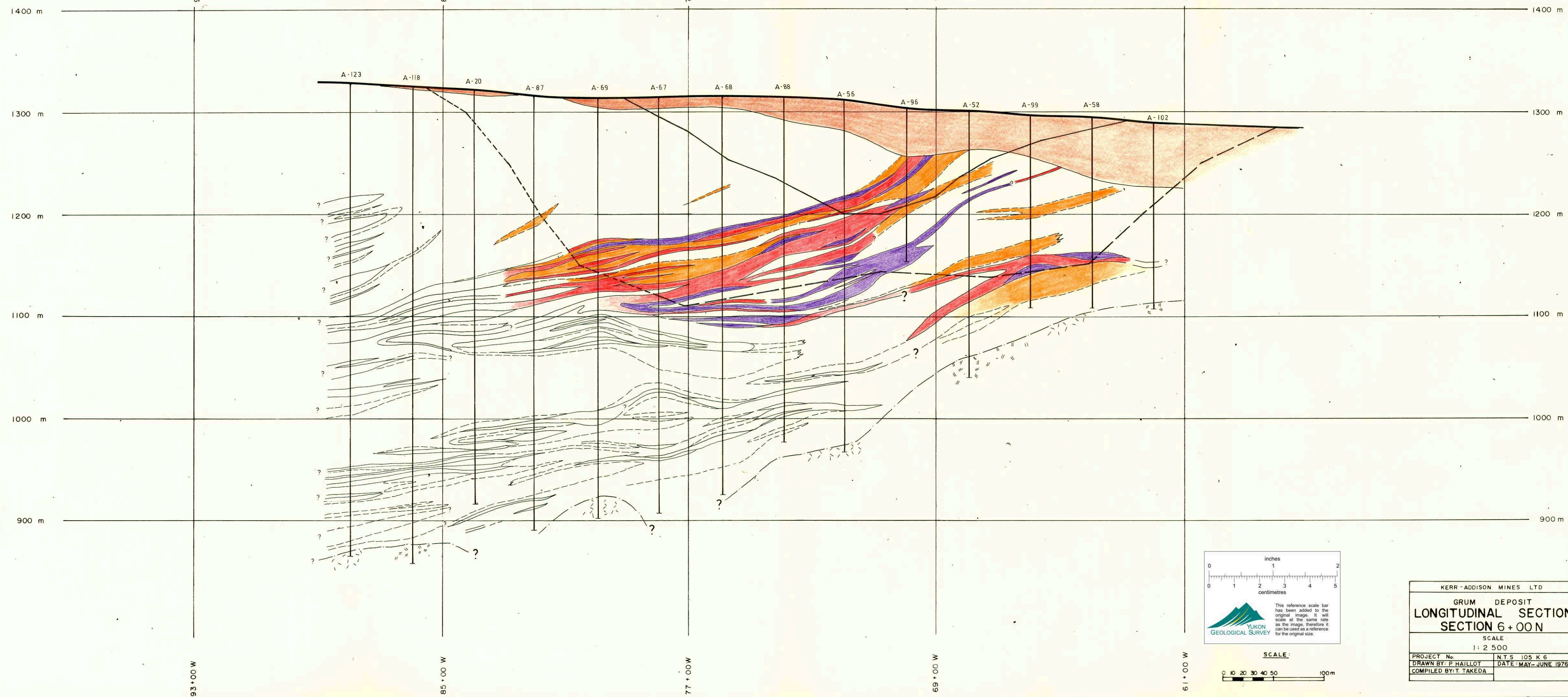
SE



KERR-ADDISON MINES LTD	
GRUM DEPOSIT	
LONGITUDINAL SECTION	
SECTION 4+00 N	
SCALE 1: 2 500	
PROJECT No.	N.T.S. 105 K 6
DRAWN BY: P. HAILLOT	DATE: MAY-JUNE 1976
COMPILED BY: T. TAKEDA	

NW

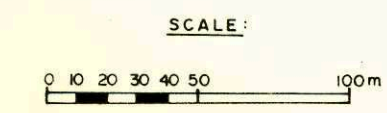
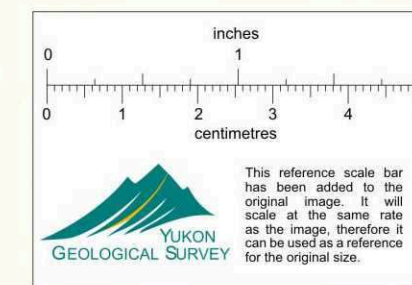
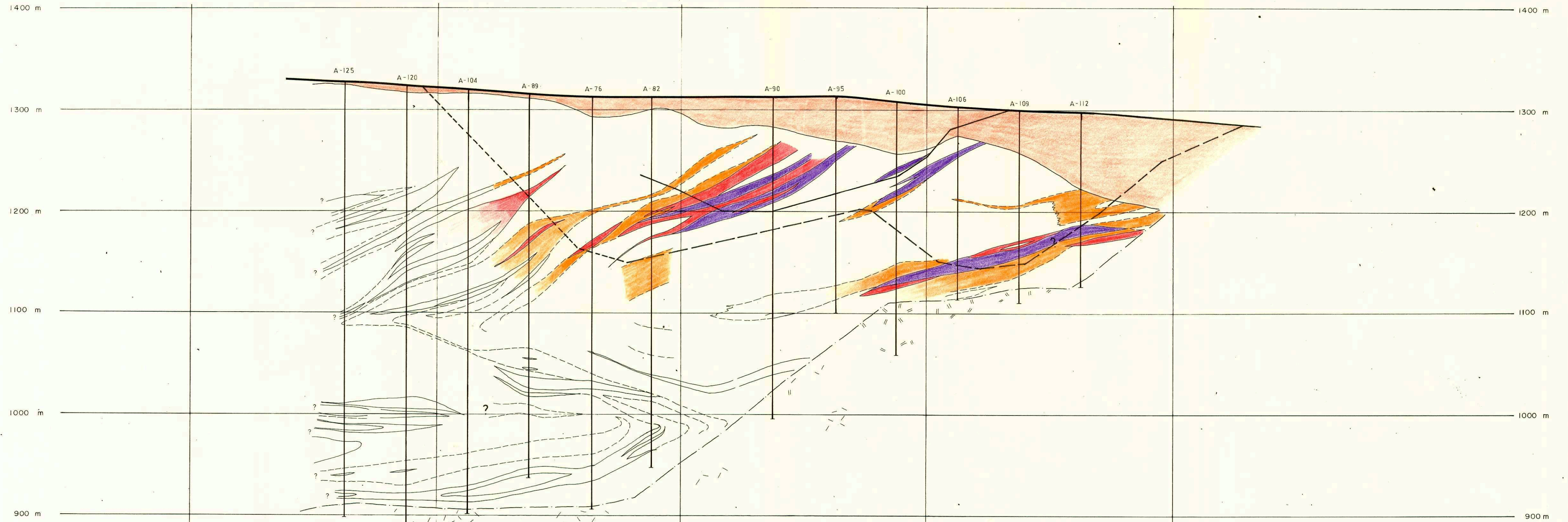
SE



KERR-ADDISON MINES LTD	
GRUM DEPOSIT	
LONGITUDINAL SECTION	
SECTION 6+00 N	
SCALE	
1:2 500	
PROJECT No.	N.T.S. 105 K 6
DRAWN BY: P. HAILLOT	DATE: MAY-JUNE 1976
COMPILED BY: T. TAKEDA	

NW

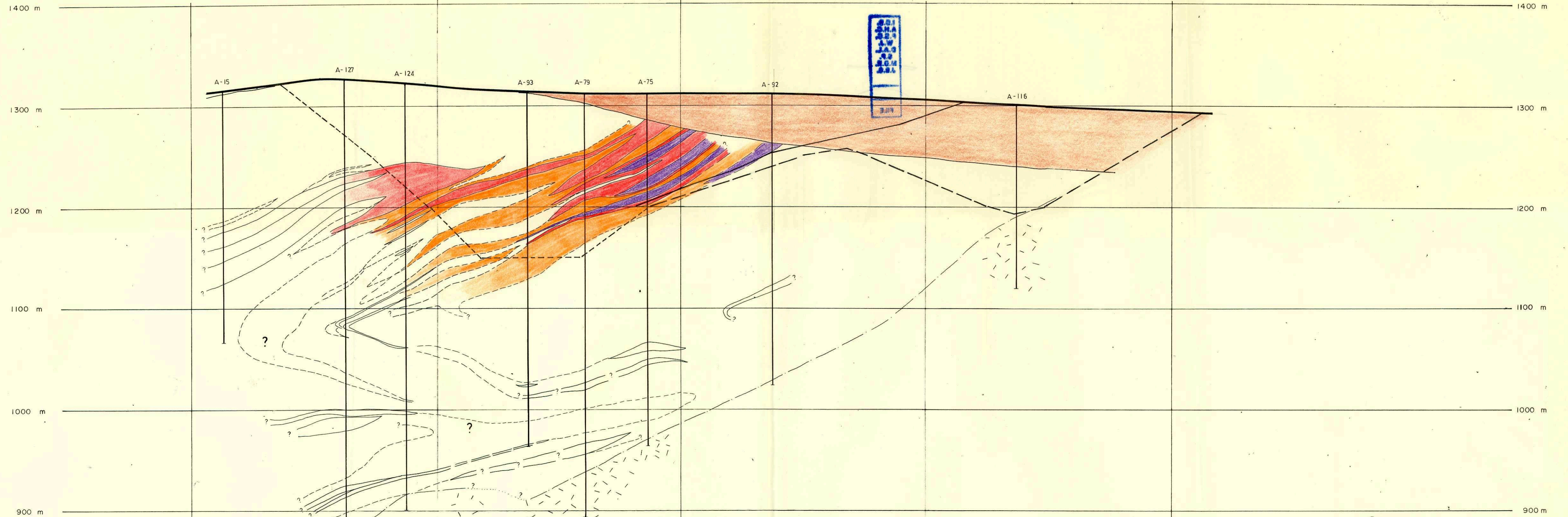
SE



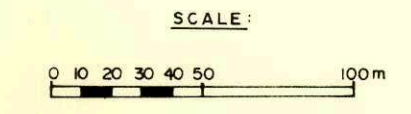
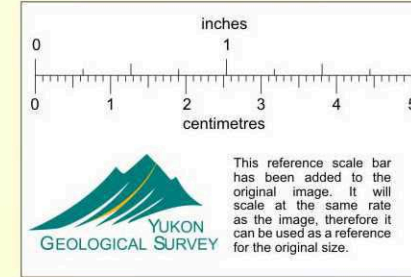
KERR-ADDISON MINES LTD	
GRUM DEPOSIT	
LONGITUDINAL SECTION	
SECTION 8+00 N	
SCALE	
1:2500	
PROJECT No.	N.T.S. 105 K 6
DRAWN BY: P. HAILLOT	DATE: MAY-JUNE 1976
COMPILED BY: T. TAKEDA	

NW

SE



(Legend on 2nd Sheet)



KERR-ADDISON MINES LTD	
GRUM DEPOSIT	
LONGITUDINAL SECTION	
SECTION 10+00 N	
SCALE	
1:2 500	
PROJECT No.	N.T.S. 105 K.6
DRAWN BY: P. HAILLOT	DATE: MAY-JUNE 1976
COMPILED BY: T. TAKEDA	