

CURRAGH RESOURCES CORPORATION

ASSAY WORK SHEET

ASSAYER Tailings Pits DATE July 2 /87

SAMPLE GROUP NAME _____ PROD. DATE _____

$$W = \frac{W_1 - W_2}{W_2 - W_c}$$

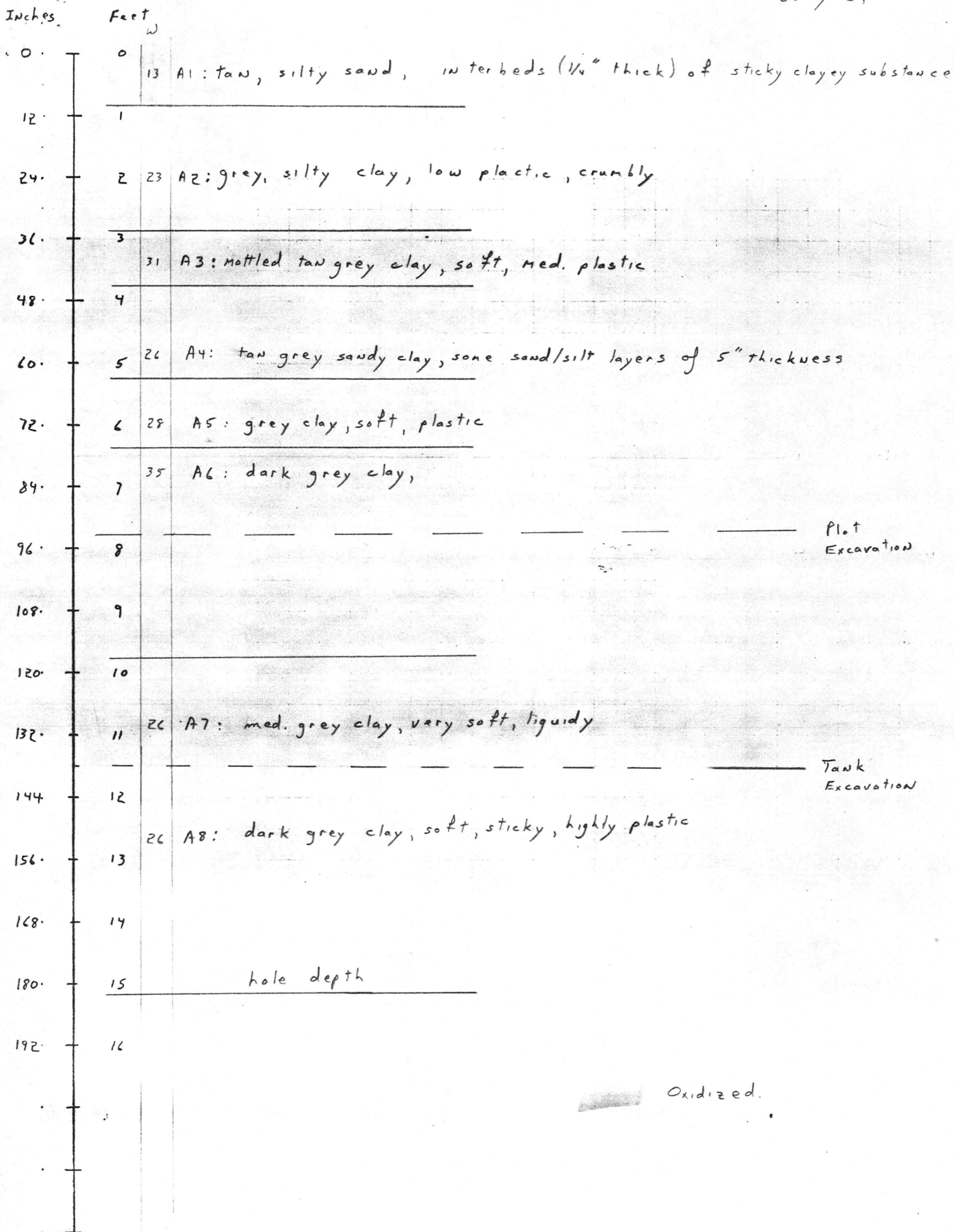
Wet Soil + Dry Soil +

SAMPLE #	WEIGHT	DISH	Dish	Dish	W(%)								Column
		W _c	W ₁	W ₂									
A1		13.4150	28.4450	26.6808	13.30					oxidized			sand light tan
A2		13.0677	28.8497	25.9272	22.70								sandy clay mottled tan-grey
A3		13.2687	36.3226	30.8225	31.33								clay grey
A4		13.1515	41.8576	35.8569	26.43								clay med. grey
A5		13.2695	44.5902	37.7267	28.06								clay dark grey
A6		12.8570	45.4124	36.7388	35.19								clay dark grey
A7		12.8707	53.7398	45.3029	26.01								clay dark grey
A8		12.7340	46.8897	39.8580	25.92								clay dark grey
B1		12.9773	28.3466	27.5813	5.25					oxidized			sand med bronze
B2		12.9598	28.6488	27.3522	9.01					oxidized			sand bronze grey
B3		13.1601	35.3300	34.0603	6.08								sand light grey
B4		12.8476	43.7256	36.8517	28.80								clay dark grey
B5		13.0442	50.6406	42.4005	28.07								clay dark grey
C1		12.8600	27.6540	27.0465	4.28					oxidized			sand bronze
C2		13.0864	31.5191	30.6554	4.92								sand dark grey bronze
C3		11.7037	39.8535	38.7078	4.24								sand light grey bronze
C4		12.8014	32.1280	31.0673	5.91					oxidized			sand light tan
C5		12.7595	40.9550	39.1863	6.69					oxidized			sand med bronze
C6		13.1499	36.9619	36.3843	2.49								sand light grey
C7		13.2824	37.3498	36.3297	4.43								sand light grey

Depth

HOLE 1: Western

July 2, 1987

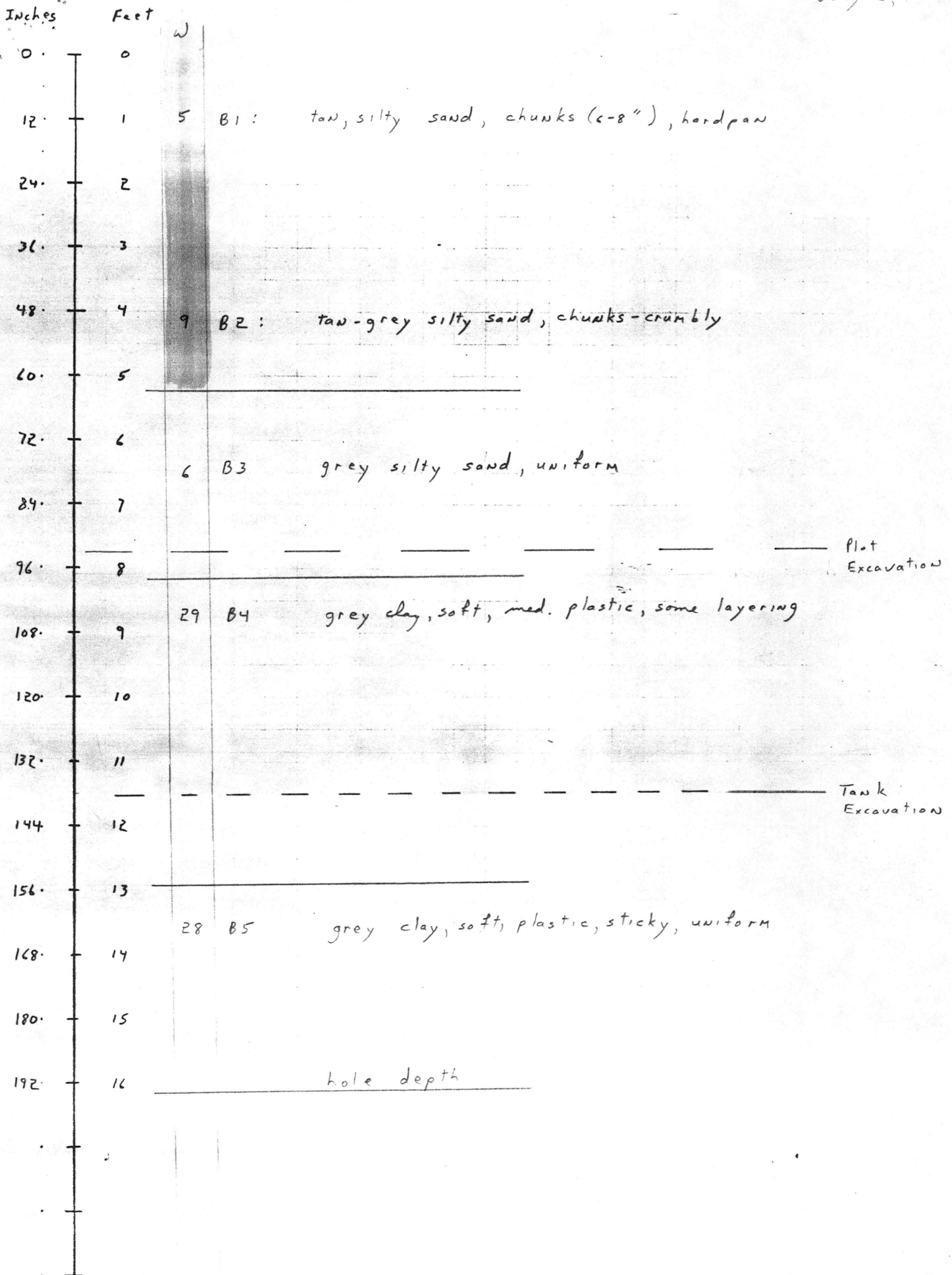


Oxidized.

Depth

Hole 2:

July 2, 1987

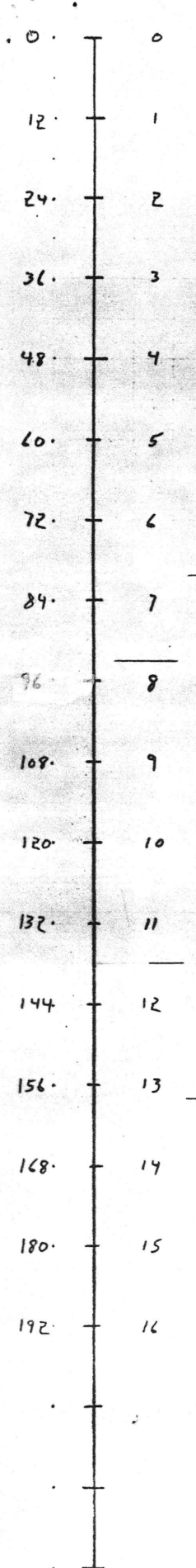


Depth

Hole 3

July 2, 1987

Inches Feet



hardpan, difficult digging, breaks into large chunks

4 C1 tan sand, dry, uniform

5 C2 mottled grey-tan silty sand, dry

Plot Excavation

Tank Excavation

tan-brown silty sand, dry

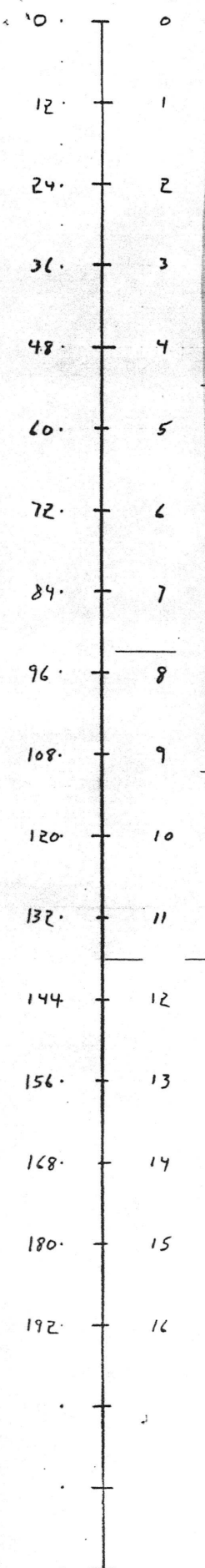
4 C3 tan-brown silty sand, dry

Depth

Hole 4 ; Eastern

July 2, 1987

Inches Feet



w)

6 C4 : reddish brown silty sand, dry, uniform
hardpan chunks of 6-8"

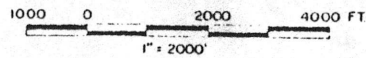
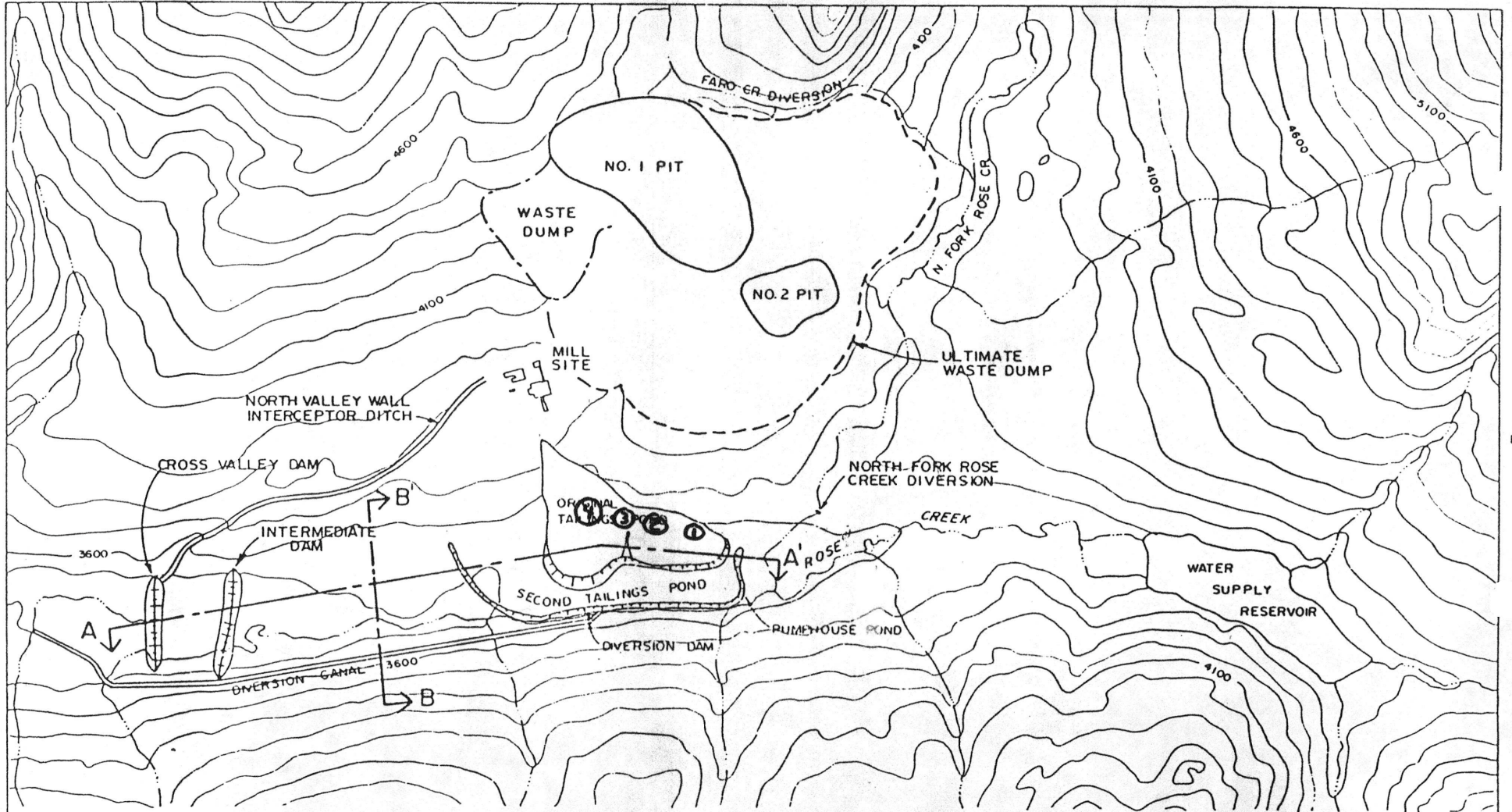
7 C5 : reddish brown silty sand, dry, uniform
hardpan chunks of 4"

3 C6 : greyish-tan, silty sand. Hole sloughing.

4 C7 : greyish silty sand, dry

Plot Excavation

Tank Excavation



CURRAGH RESOURCES FARO ABANDONMENT PLAN EVALUATION FARO MINE LAYOUT	DATE
	PROJ. NO.
	APPROVED
	NO.
STEFFEN ROBERTSON & KIRSTEN, Consulting Engineers	