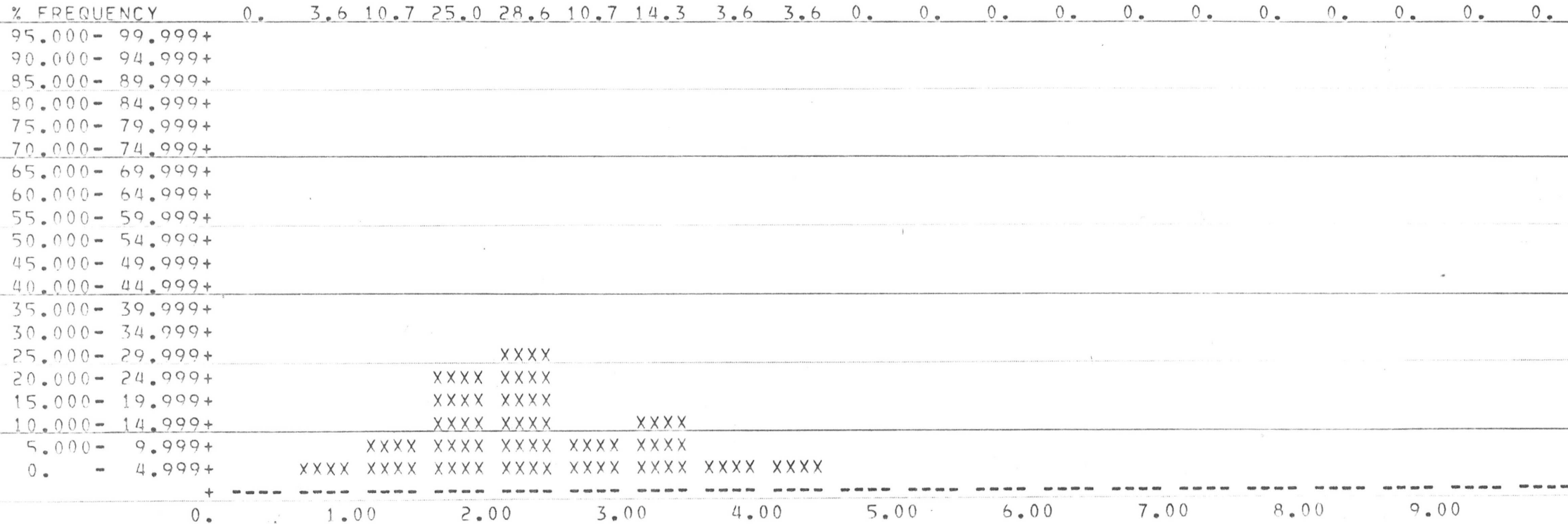


M420V2? ANALYSIS OF BLASTHOLE FREQUENCY DISTRIBUTIONS

** BLASTHOLE STATISTICS FOR ZN **

DISTRIBUTION OF BLASTHOLE ASSAYS WITHIN BLOCKS
 WHOSE MEAN GRADE IS BETWEEN 2.000 AND 2.500

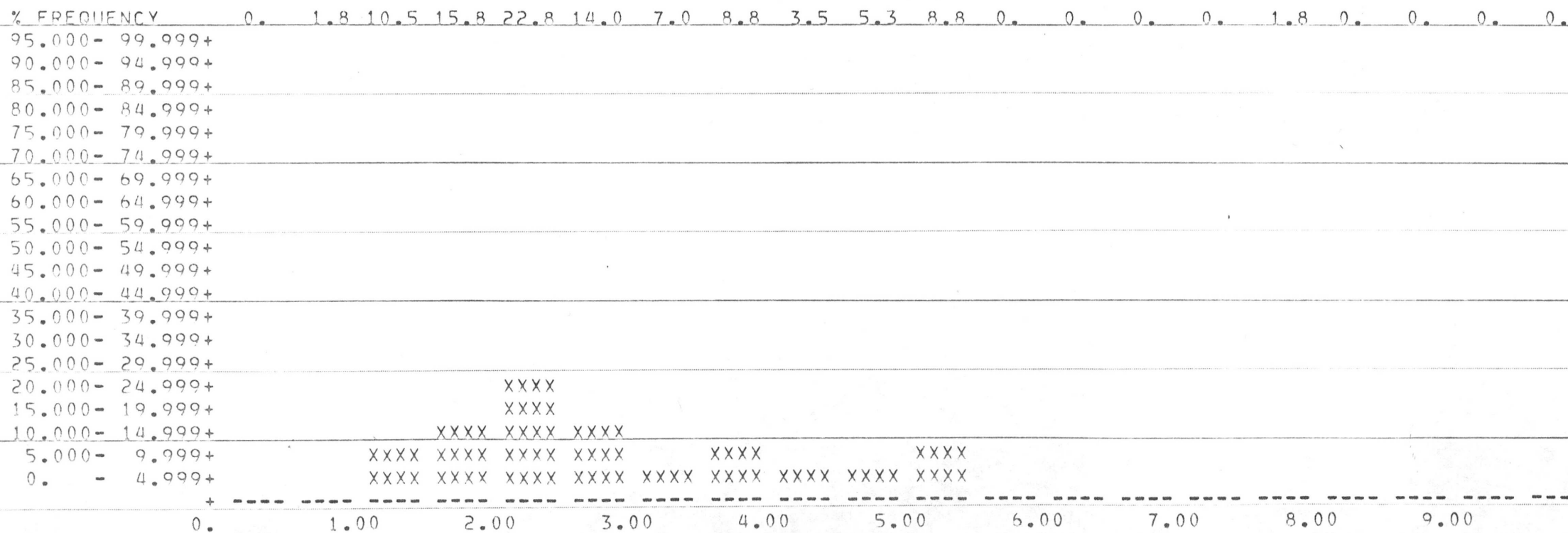


OF ASSAYS = 28., VARIANCE = .700
 STANDARD DEV. = .836, AVERAGE GRADE = 2.254

M420V2? ANALYSIS OF BLASTHOLE FREQUENCY DISTRIBUTIONS

** BLASTHOLE STATISTICS FOR ZN **

DISTRIBUTION OF BLASTHOLE ASSAYS WITHIN BLOCKS
WHOSE MEAN GRADE IS BETWEEN 2.500 AND 3.000



OF ASSAYS = 57., VARIANCE = 1.955
STANDARD DEV. = 1.398, AVERAGE GRADE = 2.800

M420V2? ANALYSIS OF BLASTHOLE FREQUENCY DISTRIBUTIONS

** BLASTHOLE STATISTICS FOR ZN **

DISTRIBUTION OF BLASTHOLE ASSAYS WITHIN BLOCKS
 WHOSE MEAN GRADE IS BETWEEN 3.000 AND 3.500

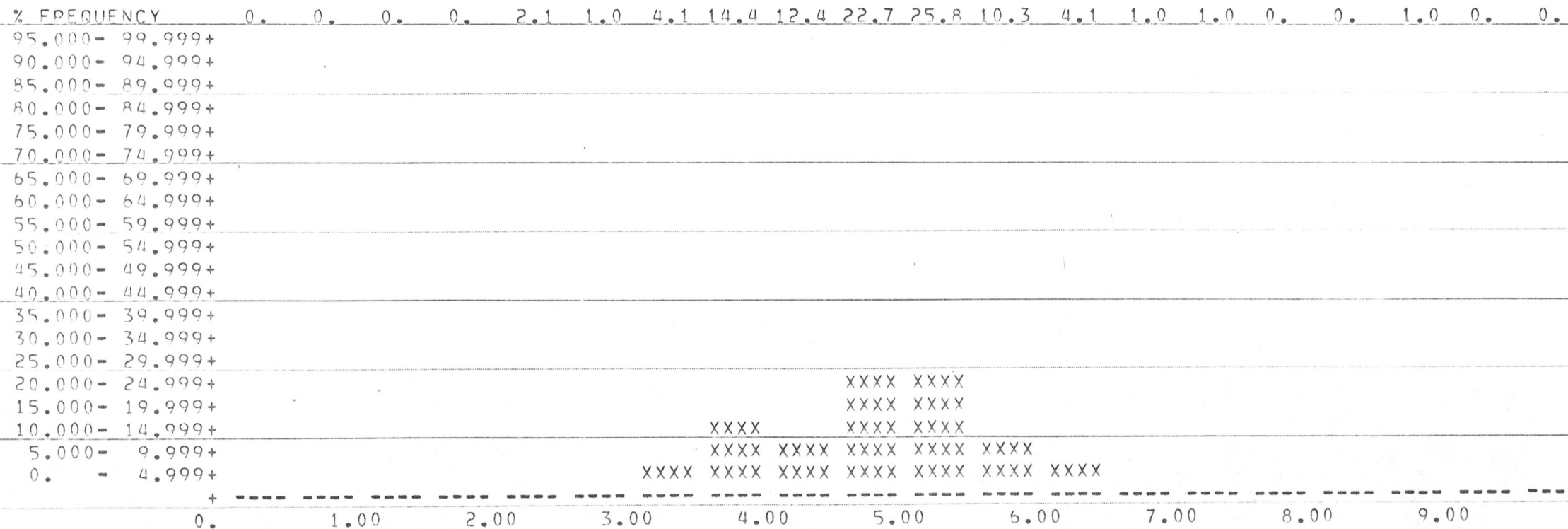
% FREQUENCY	0.	0.	3.6	10.7	3.6	21.4	21.4	16.1	7.1	7.1	3.6	1.8	1.8	1.8	0.	0.	0.	0.	0.	0.
95.000- 99.999+																				
90.000- 94.999+																				
85.000- 89.999+																				
80.000- 84.999+																				
75.000- 79.999+																				
70.000- 74.999+																				
65.000- 69.999+																				
60.000- 64.999+																				
55.000- 59.999+																				
50.000- 54.999+																				
45.000- 49.999+																				
40.000- 44.999+																				
35.000- 39.999+																				
30.000- 34.999+																				
25.000- 29.999+																				
20.000- 24.999+																				
15.000- 19.999+							XXXX	XXXX												
10.000- 14.999+							XXXX	XXXX	XXXX											
5.000- 9.999+				XXXX			XXXX	XXXX	XXXX											
0. - 4.999+			XXXX	XXXX	XXXX	XXXX	XXXX	XXXX	XXXX	XXXX	XXXX	XXXX	XXXX	XXXX						
	0.	1.00	2.00	3.00	4.00	5.00	6.00	7.00	8.00	9.00										

OF ASSAYS = 56., VARIANCE = 1.384
 STANDARD DEV. = 1.177, AVERAGE GRADE = 3.359

M420V2? ANALYSIS OF BLASTHOLE FREQUENCY DISTRIBUTIONS

** BLASTHOLE STATISTICS FOR ZN **

DISTRIBUTION OF BLASTHOLE ASSAYS WITHIN BLOCKS
WHOSE MEAN GRADE IS BETWEEN 4.500 AND 5.000



OF ASSAYS = 97., VARIANCE = .990
STANDARD DEV. = .995, AVERAGE GRADE = 4.715

M420V2? ANALYSIS OF BLASTHOLE FREQUENCY DISTRIBUTIONS

** BLASTHOLE STATISTICS FOR ZN **

DISTRIBUTION OF BLASTHOLE ASSAYS WITHIN BLOCKS
WHOSE MEAN GRADE IS BETWEEN 5.000 AND 5.500

% FREQUENCY	0.	0.	0.	0.	0.	0.	4.2	20.8	12.5	0.	25.0	20.8	0.	4.2	4.2	4.2	4.2	0.	0.	0.	
95.000- 99.999+																					
90.000- 94.999+																					
85.000- 89.999+																					
80.000- 84.999+																					
75.000- 79.999+																					
70.000- 74.999+																					
65.000- 69.999+																					
60.000- 64.999+																					
55.000- 59.999+																					
50.000- 54.999+																					
45.000- 49.999+																					
40.000- 44.999+																					
35.000- 39.999+																					
30.000- 34.999+																					
25.000- 29.999+																					
20.000- 24.999+													XXXX								
15.000- 19.999+								XXXX				XXXX	XXXX								
10.000- 14.999+								XXXX				XXXX	XXXX								
5.000- 9.999+								XXXX	XXXX			XXXX	XXXX								
0. - 4.999+							XXXX	XXXX	XXXX			XXXX	XXXX		XXXX	XXXX	XXXX	XXXX			
	+ -----																				
	0.	1.00	2.00	3.00	4.00	5.00	6.00	7.00	8.00	9.00											

OF ASSAYS = 24., VARTANCE = 1.719
STANDARD DEV. = 1.311, AVERAGE GRADE = 5.192

M420V2? ANALYSIS OF BLASTHOLE FREQUENCY DISTRIBUTIONS
 ** BLASTHOLE STATISTICS FOR 7N **

DISTRIBUTION OF BLASTHOLE ASSAYS WITHIN BLOCKS
 WHOSE MEAN GRADE IS BETWEEN 5.500 AND 6.000

% FREQUENCY	0.	0.	0.	0.	0.	5.3	2.6	2.6	5.3	10.5	15.8	18.4	7.9	10.5	5.3	13.2	2.6	0.	0.	0.	
95.000- 99.999+																					
90.000- 94.999+																					
85.000- 89.999+																					
80.000- 84.999+																					
75.000- 79.999+																					
70.000- 74.999+																					
65.000- 69.999+																					
60.000- 64.999+																					
55.000- 59.999+																					
50.000- 54.999+																					
45.000- 49.999+																					
40.000- 44.999+																					
35.000- 39.999+																					
30.000- 34.999+																					
25.000- 29.999+																					
20.000- 24.999+																					
15.000- 19.999+												XXXX									
10.000- 14.999+											XXXX	XXXX					XXXX				
5.000- 9.999+										XXXX	XXXX	XXXX	XXXX	XXXX		XXXX					
0. - 4.999+						XXXX	XXXX	XXXX	XXXX	XXXX	XXXX	XXXX	XXXX	XXXX	XXXX	XXXX	XXXX	XXXX			
	0.	1.00	2.00	3.00	4.00	5.00	6.00	7.00	8.00	9.00											

OF ASSAYS = 38., VARIANCE = 2.040
 STANDARD DEV. = 1.428, AVERAGE GRADE = 5.682

M420V2? ANALYSIS OF BLASTHOLE FREQUENCY DISTRIBUTIONS

** BLASTHOLE STATISTICS FOR ZN **

DISTRIBUTION OF BLASTHOLE ASSAYS WITHIN BLOCKS
WHOSE MEAN GRADE IS BETWEEN 6.000 AND 6.500

% FREQUENCY	0.	2.8	0.	2.8	2.8	0.	2.8	5.6	8.3	11.1	8.3	5.6	5.6	5.6	5.6	5.6	5.6	8.3	0.	13.9
95.000- 99.999+																				
90.000- 94.999+																				
85.000- 89.999+																				
80.000- 84.999+																				
75.000- 79.999+																				
70.000- 74.999+																				
65.000- 69.999+																				
60.000- 64.999+																				
55.000- 59.999+																				
50.000- 54.999+																				
45.000- 49.999+																				
40.000- 44.999+																				
35.000- 39.999+																				
30.000- 34.999+																				
25.000- 29.999+																				
20.000- 24.999+																				
15.000- 19.999+																				
10.000- 14.999+																				XXXX
5.000- 9.999+									XXXX	XXXX	XXXX							XXXX		XXXX
0. - 4.999+		XXXX		XXXX	XXXX		XXXX	XXXX	XXXX	XXXX	XXXX	XXXX	XXXX	XXXX	XXXX	XXXX	XXXX	XXXX		XXXX
	0.	1.00	2.00	3.00	4.00	5.00	6.00	7.00	8.00	9.00										

OF ASSAYS = 36., VARIANCE = 7.189
STANDARD DEV. = 2.681, AVERAGE GRADE = 6.272

M420V2? ANALYSIS OF BLASTHOLE FREQUENCY DISTRIBUTIONS

** BLASTHOLE STATISTICS FOR ZN **

DISTRIBUTION OF BLASTHOLE ASSAYS WITHIN BLOCKS
 WHOSE MEAN GRADE IS BETWEEN 6.500 AND 7.000

% FREQUENCY	0.	0.	0.	0.	0.	0.	0.	0.	11.1	0.	0.	11.1	11.1	0.	44.4	22.2	0.	0.	0.	0.	
95.000- 99.999+																					
90.000- 94.999+																					
85.000- 89.999+																					
80.000- 84.999+																					
75.000- 79.999+																					
70.000- 74.999+																					
65.000- 69.999+																					
60.000- 64.999+																					
55.000- 59.999+																					
50.000- 54.999+																					
45.000- 49.999+																					
40.000- 44.999+																					XXXX
35.000- 39.999+																					XXXX
30.000- 34.999+																					XXXX
25.000- 29.999+																					XXXX
20.000- 24.999+																					XXXX
15.000- 19.999+																					XXXX XXXX
10.000- 14.999+																					XXXX XXXX
5.000- 9.999+									XXXX			XXXX	XXXX		XXXX	XXXX					XXXX XXXX
0. - 4.999+								XXXX				XXXX	XXXX		XXXX	XXXX					XXXX XXXX
	0.	1.00	2.00	3.00	4.00	5.00	6.00	7.00	8.00	9.00											

OF ASSAYS = 9., VARIANCE = 1.259
 STANDARD DEV. = 1.122, AVERAGE GRADE = 6.711

M.C.E. BUSINESS FORMS 1-7

M420V2? ANALYSIS OF BLASTHOLE FREQUENCY DISTRIBUTIONS

** BLASTHOLE STATISTICS FOR ZN **

DISTRIBUTION OF BLASTHOLE ASSAYS WITHIN BLOCKS
 WHOSE MEAN GRADE IS BETWEEN 7.000 AND 7.500

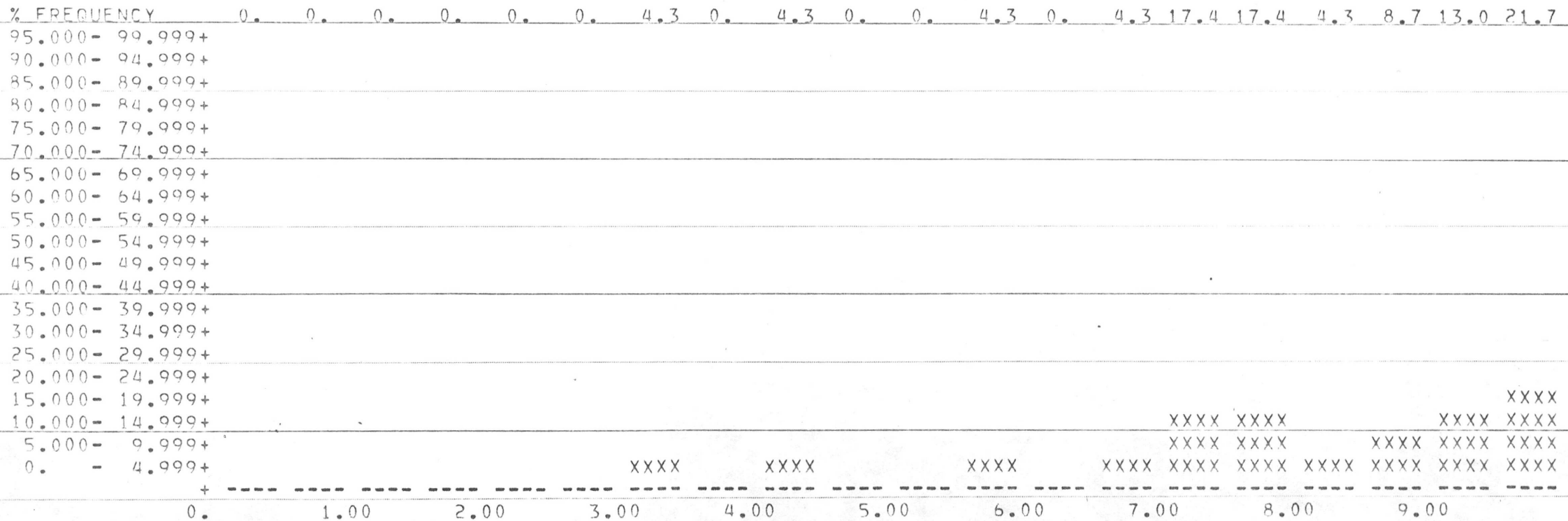
% FREQUENCY	0.	0.	0.	0.	0.	0.	12.5	4.2	0.	0.	4.2	8.3	8.3	4.2	0.	25.0	8.3	4.2	12.5	8.3	
95.000- 99.999+																					
90.000- 94.999+																					
85.000- 89.999+																					
80.000- 84.999+																					
75.000- 79.999+																					
70.000- 74.999+																					
65.000- 69.999+																					
60.000- 64.999+																					
55.000- 59.999+																					
50.000- 54.999+																					
45.000- 49.999+																					
40.000- 44.999+																					
35.000- 39.999+																					
30.000- 34.999+																					
25.000- 29.999+																					
20.000- 24.999+																					XXXX
15.000- 19.999+																					XXXX
10.000- 14.999+																					XXXX
5.000- 9.999+							XXXX					XXXX	XXXX				XXXX	XXXX		XXXX	XXXX
0. - 4.999+							XXXX	XXXX			XXXX	XXXX	XXXX	XXXX			XXXX	XXXX	XXXX	XXXX	XXXX
	0.	1.00	2.00	3.00	4.00	5.00	6.00	7.00	8.00	9.00											

OF ASSAYS = 24., VARIANCE = 6.337
 STANDARD DEV. = 2.517, AVERAGE GRADE = 7.196

M420V2? ANALYSIS OF BLASTHOLE FREQUENCY DISTRIBUTIONS

** BLASTHOLE STATISTICS FOR ZN **

DISTRIBUTION OF BLASTHOLE ASSAYS WITHIN BLOCKS
 WHOSE MEAN GRADE IS BETWEEN 8.000 AND 8.500

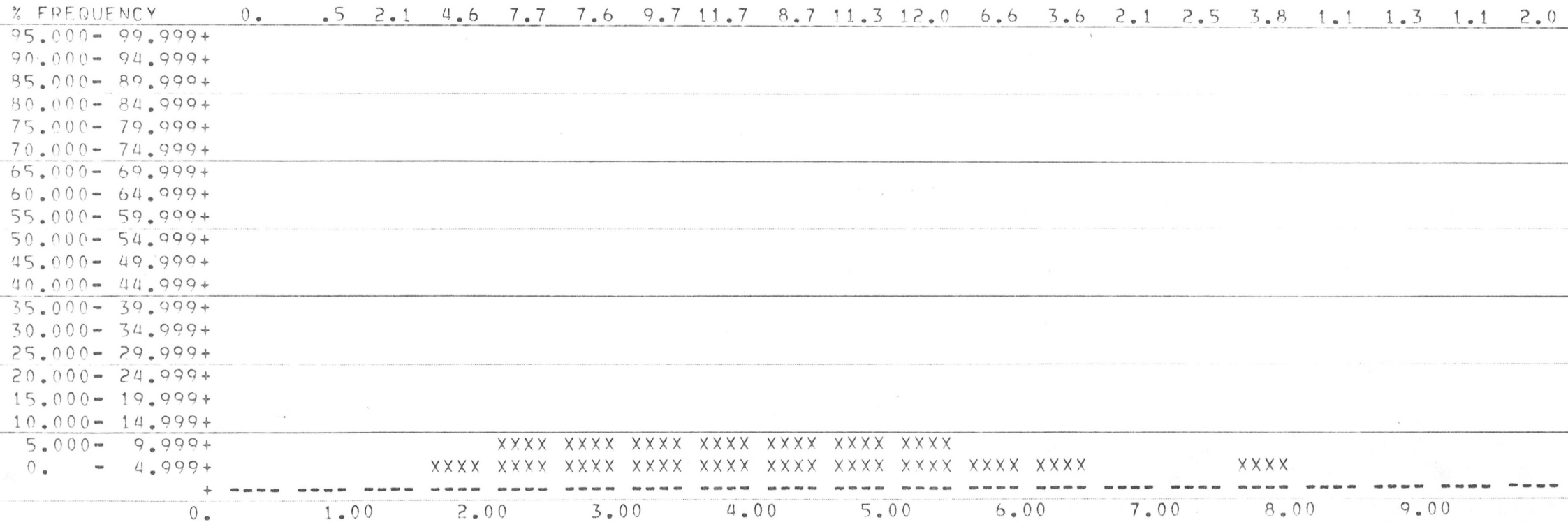


OF ASSAYS = 23., VARIANCE = 4.557
 STANDARD DEV. = 2.135, AVERAGE GRADE = 8.187

M420V2? ANALYSIS OF BLASTHOLE FREQUENCY DISTRIBUTIONS

** BLASTHOLE STATISTICS FOR ZN **

DISTRIBUTION OF BLASTHOLE ASSAYS WITHIN BLOCKS
 WHOSE MEAN GRADE IS BETWEEN 0. AND 99.990

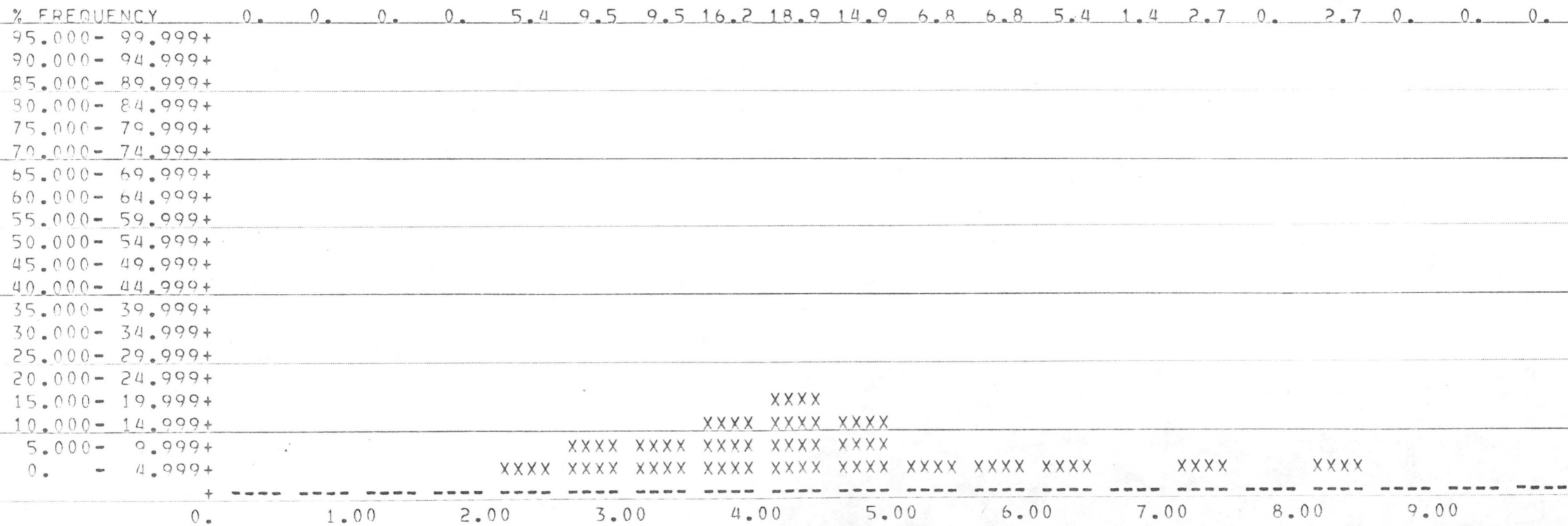


OF ASSAYS = 609., VARIANCE = 4.042
 STANDARD DEV. = 2.010, AVERAGE GRADE = 4.488

M420V2? ANALYSIS OF BLASTHOLE FREQUENCY DISTRIBUTIONS

** BLASTHOLE STATISTICS FOR ZN **

DISTRIBUTION OF BLASTHOLE BLOCKS
WHOSE MEAN GRADE IS BETWEEN 0. AND 99.990



OF ASSAYS = 74., VARIANCE = 1.749
STANDARD DEV. = 1.322, AVERAGE GRADE = 4.402

BLASTHOLE ANALYSIS

** BLASTHOLE STATISTICS FOR PB **

BLASTHOLE ASSAY INTERVALS

	0. TO .50	.50 TO 1.00	1.00 TO 1.50	1.50 TO 2.00	2.00 TO 2.50	2.50 TO 3.00	3.00 TO 3.50	3.50 TO 4.00	4.00 TO 4.50	4.50 TO 5.00
BLOCK GRADE COMPUTED FROM BLASTHOLES										
4.500 TO 4.999	0.	0.	0.	1.	1.	1.	2.	2.	4.	23.
4.000 TO 4.499	0.	0.	0.	0.	0.	2.	3.	5.	1.	4.
3.500 TO 3.999	0.	0.	4.	1.	3.	9.	11.	6.	16.	17.
3.000 TO 3.499	0.	0.	1.	3.	17.	25.	41.	19.	12.	9.
2.500 TO 2.999	0.	0.	3.	13.	23.	39.	23.	13.	6.	1.
2.000 TO 2.499	2.	13.	16.	26.	33.	31.	22.	3.	1.	3.
1.500 TO 1.999	1.	4.	16.	4.	5.	7.	5.	0.	0.	0.
1.000 TO 1.499	2.	15.	14.	7.	5.	2.	0.	0.	0.	0.
.500 TO .999	2.	5.	1.	0.	0.	0.	1.	0.	0.	0.
0. TO .499	0.	0.	0.	0.	0.	0.	0.	0.	0.	0.

M420V2? ANALYSIS OF BLASTHOLE FREQUENCY DISTRIBUTIONS

** BLASTHOLE STATISTICS FOR PB **

DISTRIBUTION OF BLASTHOLE ASSAYS WITHIN BLOCKS
 WHOSE MEAN GRADE IS BETWEEN .500 AND 1.000

% FREQUENCY	22.2	55.6	11.1	0.	0.	0.	11.1	0.	0.	0.
45.000- 49.999+		XXXX								
40.000- 44.999+		XXXX								
35.000- 39.999+		XXXX								
30.000- 34.999+		XXXX								
25.000- 29.999+		XXXX								
20.000- 24.999+		XXXX								
15.000- 19.999+	XXXX	XXXX								
10.000- 14.999+	XXXX	XXXX								
5.000- 9.999+	XXXX	XXXX	XXXX				XXXX			
0. - 4.999+	XXXX	XXXX	XXXX				XXXX			
	+	-----	-----	-----	-----	-----	-----	-----	-----	-----
	0.	1.00	2.00	3.00	4.00					

OF ASSAYS = 9., VARIANCE = .759
 STANDARD DEV. = .871, AVERAGE GRADE = .922

M420V2? ANALYSIS OF BLASTHOLE FREQUENCY DISTRIBUTIONS

** BLASTHOLE STATISTICS FOR PB **

DISTRIBUTION OF BLASTHOLE ASSAYS WITHIN BLOCKS
WHOSE MEAN GRADE IS BETWEEN 1.000 AND 1.500

% FREQUENCY	4.4	33.3	31.1	15.6	11.1	4.4	0.	0.	0.	0.
45.000- 49.999+										
40.000- 44.999+										
35.000- 39.999+										
30.000- 34.999+		XXXX								
25.000- 29.999+		XXXX	XXXX							
20.000- 24.999+		XXXX	XXXX							
15.000- 19.999+		XXXX	XXXX							
10.000- 14.999+		XXXX	XXXX	XXXX						
5.000- 9.999+		XXXX	XXXX	XXXX	XXXX					
0. - 4.999+	XXXX	XXXX	XXXX	XXXX	XXXX	XXXX				
	+	-----	-----	-----	-----	-----	-----	-----	-----	-----
	0.	1.00	2.00	3.00	4.00					

OF ASSAYS = 45., VARIANCE = .383
STANDARD DEV. = .619, AVERAGE GRADE = 1.231

M420V2? ANALYSIS OF BLASTHOLE FREQUENCY DISTRIBUTIONS

** BLASTHOLE STATISTICS FOR PB **

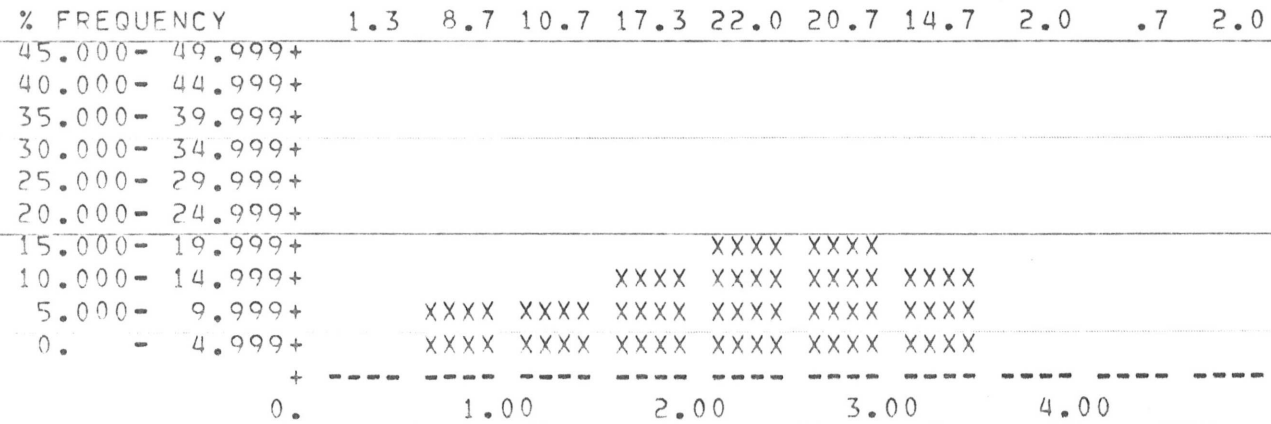
DISTRIBUTION OF BLASTHOLE ASSAYS WITHIN BLOCKS
 WHOSE MEAN GRADE IS BETWEEN 1.500 AND 2.000

% FREQUENCY	2.4	9.5	38.1	9.5	11.9	16.7	11.9	0.	0.	0.
45.000- 49.999+										
40.000- 44.999+										
35.000- 39.999+			XXXX							
30.000- 34.999+			XXXX							
25.000- 29.999+			XXXX							
20.000- 24.999+			XXXX							
15.000- 19.999+			XXXX							
10.000- 14.999+			XXXX			XXXX				
5.000- 9.999+		XXXX	XXXX	XXXX	XXXX	XXXX	XXXX	XXXX		
0. - 4.999+		XXXX	XXXX	XXXX	XXXX	XXXX	XXXX	XXXX		
	+ -----									
	0.	1.00	2.00	3.00	4.00					

OF ASSAYS = 42., VARIANCE = .720
 STANDARD DEV. = .848, AVERAGE GRADE = 1.781

M420V2? ANALYSIS OF BLASTHOLE FREQUENCY DISTRIBUTIONS
 ** BLASTHOLE STATISTICS FOR PB **

DISTRIBUTION OF BLASTHOLE ASSAYS WITHIN BLOCKS
 WHOSE MEAN GRADE IS BETWEEN 2.000 AND 2.500



OF ASSAYS = 150., VARIANCE = 1.058
 STANDARD DEV. = 1.029, AVERAGE GRADE = 2.224

M420V2? ANALYSIS OF BLASTHOLE FREQUENCY DISTRIBUTIONS

** BLASTHOLE STATISTICS FOR PB **

DISTRIBUTION OF BLASTHOLE ASSAYS WITHIN BLOCKS
 WHOSE MEAN GRADE IS BETWEEN 2.500 AND 3.000

% FREQUENCY	0.	0.	2.5	10.7	19.0	32.2	19.0	10.7	5.0	.8
45.000- 49.999+										
40.000- 44.999+										
35.000- 39.999+										
30.000- 34.999+										
25.000- 29.999+						XXXX				
20.000- 24.999+						XXXX				
15.000- 19.999+					XXXX	XXXX	XXXX			
10.000- 14.999+					XXXX	XXXX	XXXX			
5.000- 9.999+				XXXX	XXXX	XXXX	XXXX	XXXX		
0. - 4.999+				XXXX	XXXX	XXXX	XXXX	XXXX	XXXX	
	0.	1.00	2.00	3.00	4.00					

OF ASSAYS = 121., VARIANCE = .474
 STANDARD DEV. = .688, AVERAGE GRADE = 2.750

M420V2? ANALYSIS OF BLASTHOLE FREQUENCY DISTRIBUTIONS

** BLASTHOLE STATISTICS FOR PB **

DISTRIBUTION OF BLASTHOLE ASSAYS WITHIN BLOCKS
 WHOSE MEAN GRADE IS BETWEEN 3.000 AND 3.500

% FREQUENCY	0.	0.	.8	2.4	13.5	19.8	32.5	15.1	9.5	6.3
45.000- 49.999+										
40.000- 44.999+										
35.000- 39.999+										
30.000- 34.999+							XXXX			
25.000- 29.999+							XXXX			
20.000- 24.999+							XXXX			
15.000- 19.999+						XXXX	XXXX			
10.000- 14.999+				XXXX	XXXX	XXXX	XXXX			
5.000- 9.999+				XXXX	XXXX	XXXX	XXXX	XXXX		
0. - 4.999+				XXXX	XXXX	XXXX	XXXX	XXXX	XXXX	XXXX
	+ -----									
	0.	1.00	2.00	3.00	4.00					

OF ASSAYS = 126., VARIANCE = .571
 STANDARD DEV. = .756, AVERAGE GRADE = 3.187

M420V2? ANALYSIS OF BLASTHOLE FREQUENCY DISTRIBUTIONS
 ** BLASTHOLE STATISTICS FOR PB **

DISTRIBUTION OF BLASTHOLE ASSAYS WITHIN BLOCKS
 WHOSE MEAN GRADE IS BETWEEN 3.500 AND 4.000

% FREQUENCY	0.	0.	6.0	1.5	4.5	13.4	16.4	9.0	23.9	25.4
45.000- 49.999+										
40.000- 44.999+										
35.000- 39.999+										
30.000- 34.999+										
25.000- 29.999+										
20.000- 24.999+									XXXX	XXXX
15.000- 19.999+									XXXX	XXXX
10.000- 14.999+					XXXX	XXXX			XXXX	XXXX
5.000- 9.999+					XXXX	XXXX	XXXX	XXXX	XXXX	XXXX
0. - 4.999+			XXXX		XXXX	XXXX	XXXX	XXXX	XXXX	XXXX
	+	-----								
	0.	1.00	2.00	3.00	4.00					

OF ASSAYS = 67., VARIANCE = 1.713
 STANDARD DEV. = 1.309, AVERAGE GRADE = 3.797

M420V2? ANALYSIS OF BLASTHOLE FREQUENCY DISTRIBUTIONS

** BLASTHOLE STATISTICS FOR PB **

DISTRIBUTION OF BLASTHOLE ASSAYS WITHIN BLOCKS
WHOSE MEAN GRADE IS BETWEEN 4.000 AND 4.500

% FREQUENCY	0.	0.	0.	0.	0.	13.3	20.0	33.3	6.7	26.7
45.000- 49.999+										
40.000- 44.999+										
35.000- 39.999+										
30.000- 34.999+								XXXX		
25.000- 29.999+								XXXX		
20.000- 24.999+								XXXX		XXXX
15.000- 19.999+						XXXX	XXXX	XXXX		XXXX
10.000- 14.999+					XXXX	XXXX	XXXX	XXXX		XXXX
5.000- 9.999+					XXXX	XXXX	XXXX	XXXX		XXXX
0. - 4.999+					XXXX	XXXX	XXXX	XXXX	XXXX	XXXX
	+ -----									
	0.	1.00	2.00	3.00	4.00					

OF ASSAYS = 15., VARIANCE = 1.628
STANDARD DEV. = 1.276, AVERAGE GRADE = 4.087

M420V2? ANALYSIS OF BLASTHOLE FREQUENCY DISTRIBUTIONS

** BLASTHOLE STATISTICS FOR PB **

DISTRIBUTION OF BLASTHOLE ASSAYS WITHIN BLOCKS
 WHOSE MEAN GRADE IS BETWEEN 4.500 AND 5.000

% FREQUENCY	0.	0.	0.	2.9	2.9	2.9	5.9	5.9	11.8	67.6
45.000- 49.999+										XXXX
40.000- 44.999+										XXXX
35.000- 39.999+										XXXX
30.000- 34.999+										XXXX
25.000- 29.999+										XXXX
20.000- 24.999+										XXXX
15.000- 19.999+										XXXX
10.000- 14.999+										XXXX
5.000- 9.999+									XXXX	XXXX
0. - 4.999+				XXXX	XXXX	XXXX	XXXX	XXXX	XXXX	XXXX
	+ -----									
	0.	1.00	2.00	3.00	4.00					

OF ASSAYS = 34., VARIANCE = 1.977
 STANDARD DEV. = 1.406, AVERAGE GRADE = 4.903

M420V2? ANALYSIS OF BLASTHOLE FREQUENCY DISTRIBUTIONS
 ** BLASTHOLE STATISTICS FOR PB **

DISTRIBUTION OF BLASTHOLE ASSAYS WITHIN BLOCKS
 WHOSE MEAN GRADE IS BETWEEN 0. AND 99.990

% FREQUENCY	1.1	6.1	9.0	9.0	14.3	19.0	17.7	7.9	6.6	9.2
45.000- 49.999+										
40.000- 44.999+										
35.000- 39.999+										
30.000- 34.999+										
25.000- 29.999+										
20.000- 24.999+										
15.000- 19.999+						XXXX	XXXX			
10.000- 14.999+					XXXX	XXXX	XXXX			
5.000- 9.999+			XXXX	XXXX	XXXX	XXXX	XXXX	XXXX		XXXX
0. - 4.999+		XXXX	XXXX	XXXX	XXXX	XXXX	XXXX	XXXX	XXXX	XXXX
	+	-----	-----	-----	-----	-----	-----	-----	-----	-----
	0.	1.00	2.00	3.00	4.00					

OF ASSAYS = 609., VARIANCE = 1.704
 STANDARD DEV. = 1.305, AVERAGE GRADE = 2.773

M420V2? ANALYSIS OF BLASTHOLE FREQUENCY DISTRIBUTIONS

** BLASTHOLE STATISTICS FOR PB **

DISTRIBUTION OF BLASTHOLE BLOCKS
 WHOSE MEAN GRADE IS BETWEEN 0. AND 99.990

% FREQUENCY	0.	1.4	8.1	6.8	24.3	21.6	18.9	9.5	2.7	6.8
45.000- 49.999+										
40.000- 44.999+										
35.000- 39.999+										
30.000- 34.999+										
25.000- 29.999+										
20.000- 24.999+					XXXX					
15.000- 19.999+					XXXX	XXXX	XXXX			
10.000- 14.999+					XXXX	XXXX	XXXX			
5.000- 9.999+			XXXX		XXXX	XXXX	XXXX	XXXX		
0. - 4.999+			XXXX	XXXX	XXXX	XXXX	XXXX	XXXX	XXXX	XXXX
	+	-----	-----	-----	-----	-----	-----	-----	-----	-----
	0.	1.00	2.00	3.00	4.00					

OF ASSAYS = 74., VARIANCE = .896
 STANDARD DEV. = .946, AVERAGE GRADE = 2.769

DATA FILE COMP.S1 * NO. SIZE RECS /REC
 ----- * -----
 MAX # BUFFERS = 0 * 9 500 33 15

LINE 3: 1 0 5 0 0 0

LINE 4: 13950. 14300. 9450. 9800. 3690. 3690. 0. 10.000
 1 M303V1 -----COMPOSITE ASSAY VARIOGRAM

** VARIOGRAM 3690 BLASTHOLE DATA AREA 'A' ** For PB

* ASSAYS = 409. AVG. = 2.5870 VARIANCE = 1.3231

PAIRS	-H-	DRIFT	V(H)	AVG	*V(H)		.529	1.059	1.588	2.117	2.646
1	767.	16.	-.018	.851	2.639	.834		X *			
2	2335.	31.	.050	.974	2.590	.973		X*			
3	3522.	50.	.104	1.139	2.578	1.143			X *		
4	4593.	70.	.212	1.137	2.560	1.149			X*		
5	5450.	90.	.239	1.146	2.555	1.161			X *		
6	6067.	110.	.235	1.232	2.532	1.258			X*		
7	6470.	130.	.245	1.301	2.528	1.332			X*		
8	6634.	150.	.259	1.348	2.537	1.374			X*		
9	6695.	170.	.297	1.264	2.552	1.302			X*		
10	6488.	190.	.297	1.315	2.551	1.334			X*		
11	6174.	210.	.295	1.351	2.557	1.367			X *		
12	5773.	230.	.389	1.397	2.555	1.414			X*		
13	5267.	250.	.413	1.488	2.572	1.496			X*		
14	4615.	270.	.366	1.567	2.623	1.545			X *		
15	3950.	290.	.324	1.553	2.603	1.497			X *		
16	3173.	310.	.299	1.482	2.735	1.402			X *		
17	2344.	329.	.201	1.316	2.750	1.238		X	X *		
18	1430.	349.	.140	1.466	2.763	1.373		X	X *		
19	825.	369.	.105	1.570	2.880	1.410		X	X *		
20	464.	389.	-.173	1.640	2.953	1.437		X	X *		

DATA FILE COMP. S1 * NO. SIZE RECS /REC
 ----- * -----
 MAX # BUFFERS = 0 * 9 500 33 15

LINE 3: 1 0 5 0 0 0

LINE 4: 13950. 14300. 9450. 9800. 3670. 3670. 0. 10.000

1 M303V1 COMPOSITE ASSAY VARIOGRAM

** VARIOGRAM 3670 BLASTHOLE DATA AREA 'A' ** FOR PB

ASSAYS = 509. AVG. = 2.5086 VARIANCE = 1.1283

PAIRS	-H-	DRIFT	V(H)	AVG	*V(H)	.451	.903	1.354	1.805	2.257
					+.....+.....+.....+.....+				
1	1210.	16.	-.031	.383	2.550	.377	X*			
2	3492.	31.	-.037	.561	2.507	.562	X*			
3	5599.	50.	-.028	.703	2.526	.699	X.*			
4	7162.	70.	.007	.832	2.475	.844	X*			
5	8344.	90.	-.021	.927	2.454	.948	X*			
6	9311.	110.	-.060	1.048	2.426	1.084	*			
7	9919.	130.	-.082	1.179	2.412	1.226	*			
8	10239.	150.	-.118	1.249	2.403	1.303	X*			
9	10290.	170.	-.155	1.311	2.407	1.366	*			
10	10210.	190.	.172	1.323	2.442	1.359	*			
11	9813.	210.	-.208	1.318	2.483	1.332	X*			
12	9302.	230.	-.212	1.266	2.528	1.256	X *			
13	8394.	250.	-.206	1.243	2.571	1.213	X *			
14	7444.	270.	-.158	1.213	2.598	1.171	X *			
15	6306.	290.	-.115	1.146	2.647	1.086	X *			
16	4897.	310.	-.088	1.121	2.688	1.047	X *			
17	3435.	329.	-.069	1.129	2.760	1.024	X *			
18	1969.	349.	-.107	1.064	2.799	.954	X *			
19	1044.	369.	.057	.864	2.852	.760	X *			
20	515.	389.	-.148	.945	2.881	.823	X *			

12
11
10
9
8
7
6
5
4
3
2

!

DATA FILE COMP.S1 * NO. SIZE RECS /REC
 ----- * -----
 MAX # BUFFERS = 0 * 9 500 33 15

LINE 3: 1 0 5 0 0 0

LINE 4: 13950. 14300. 9450. 9800. 3650. 3650. 0. 10.000

1 M303V1 COMPOSITE ASSAY VARIOGRAM

** VARIOGRAM 3650 BLASTHOLE DATA AREA 'A' ** FOR PB

ASSAYS = 509. AVG. = 2.5668 VARIANCE = .6159

PAIRS	-H-	DRIFT	V(H)	AVG	*V(H)	.246	.493	.739	.985	1.232
					+++++
1 1225.	16.	.018	.335	2.556	.337	X *				
2 3521.	31.	-.018	.450	2.533	.456		XX			
3 5683.	50.	.005	.535	2.532	.543			XX		
4 7374.	70.	.039	.600	2.520	.611				XX	
5 8678.	90.	.038	.657	2.523	.669					XX
6 9663.	110.	.038	.694	2.538	.702					XX
7 10190.	130.	.004	.706	2.540	.713					X *
8 10567.	150.	-.018	.732	2.552	.736					X *
9 10626.	170.	-.017	.704	2.550	.709					X *
10 10400.	190.	.017	.674	2.545	.680					XX
11 9803.	210.	.039	.636	2.565	.637					X *
12 9110.	230.	.091	.604	2.567	.604					X *
13 8267.	250.	.126	.566	2.589	.561					X *
14 7049.	270.	.163	.534	2.612	.525					X *
15 5836.	290.	.205	.505	2.637	.492					X *
16 4479.	309.	.226	.491	2.670	.472					X *
17 3137.	329.	.196	.470	2.685	.449					X *
18 1783.	349.	.199	.466	2.683	.446					X *
19 965.	369.	.185	.397	2.668	.381					X *
20 514.	389.	.152	.339	2.678	.325					X *

12
11
10
9
8
7
6
5
4
3
2

MAX # BUFFERS = 20 * 10 400 1 400

DATA FILE COMP.S1 * NO. SIZE RECS /REC

MAX # BUFFERS = 0 * 9 500 33 15

LINE 3: 1 0 6 0 0 0

LINE 4: 13950. 14300. 9450. 9800. 3690. 3690. 0. 10.000
1 M303V1 -----COMPOSITE ASSAY VARIOGRAM

** VARIOGRAM 3690 BLASTHOLE DATA AREA 'A' ** FOR ZN

ASSAYS = 405. AVG. = 4.1543 VARIANCE = 2.9767

PAIRS	H	DRIFT	V(H)	AVG	*V(H)	1.191	2.381	3.572	4.763	5.953
1	751.	16.	-.048	1.759	4.292	1.702				
2	2287.	31.	.050	2.001	4.172	1.993	X *			
3	3443.	50.	.079	2.489	4.184	2.472		X *		
4	4535.	70.	.244	2.779	4.186	2.758			X *	
5	5378.	90.	.240	2.795	4.187	2.773				X *
6	5999.	110.	.232	2.898	4.156	2.896				X *
7	6368.	130.	.221	3.017	4.142	3.026				X *
8	6533.	150.	.210	2.938	4.149	2.942				X *
9	6599.	170.	.244	2.769	4.179	2.753				X *
10	6389.	190.	.215	2.813	4.167	2.804				X *
11	6075.	210.	.143	2.904	4.140	2.915				X *
12	5654.	230.	.226	2.971	4.081	3.025				X *
13	5134.	250.	.243	3.130	4.074	3.192				X *
14	4486.	270.	.283	3.342	4.108	3.379				X *
15	3826.	290.	.412	3.604	4.157	3.602				X *
16	3084.	310.	.574	3.729	4.202	3.687				X *
17	2280.	329.	.473	3.433	4.195	3.399				X *
18	1375.	349.	.284	3.393	4.175	3.377				X *
19	788.	369.	-.034	3.479	4.216	3.428				X *
20	439.	389.	-.093	4.020	4.236	3.943				X *

12
11
10
9
8
7
6
5
4
3
2



MAX # BUFFERS = 20

1 400

DATA FILE COMP.S1 * NO. SIZE RECS /REC
 ----- * -----
 MAX # BUFFERS = 0 * 9 500 33 15

LINE 3: 1 0 6 0 0 0

LINE 4: 13950. 14300. 9450. 9800. 3670. 3670. 0. 10.000

1 M303V1 COMPOSITE ASSAY VARIOGRAM

** VARIOGRAM 3670 BLASTHOLE DATA AREA 'A' ** FOR ZN

ASSAYS = 508. AVG. = 4.2150 VARIANCE = 2.7893

PAIRS	-H-	DRIFT	V(H)	AVG	*V(H)	1.116	2.231	3.347	4.463	5.579
					+.....+.....+.....+.....+				
1	1205.	16.	.004	1.023	4.274	1.009				
2	3482.	31.	.072	1.403	4.225	1.399				
3	5588.	50.	.118	1.729	4.261	1.711				
4	7146.	70.	.183	2.032	4.181	2.049				
5	8328.	90.	.182	2.347	4.151	2.383				
6	9291.	110.	.145	2.617	4.108	2.685				
7	9900.	130.	.097	2.876	4.092	2.963				
8	10215.	150.	.010	2.919	4.087	3.011				
9	10268.	170.	-.021	2.991	4.094	3.080				
10	10184.	190.	.022	2.949	4.133	3.008				
11	9784.	210.	-.048	2.969	4.174	2.998				
12	9269.	230.	-.014	2.925	4.236	2.911				
13	8357.	250.	.077	2.992	4.292	2.939				
14	7408.	270.	.192	3.150	4.332	3.065				
15	6268.	290.	.260	3.234	4.387	3.107				
16	4854.	310.	.303	3.436	4.439	3.263				
17	3393.	329.	.320	3.593	4.522	3.349				
18	1938.	349.	.238	3.285	4.542	3.048				
19	1022.	369.	.321	2.953	4.608	2.701				
20	501.	389.	.140	3.144	4.590	2.888				

12
11
10
9
8
7
6
5
4
3
2

DATA FILE COMP.S1 * NO. SIZE RECS /REC
 ----- * -----
 MAX # BUFFERS - 0 * 9 500 33 15

LINE 3: 1 0 6 0 0 0

LINE 4: 13950. 14300. 9450. 9800. 3650. 3650. 0. 10.000

1 M303V1 -----COMPOSITE ASSAY VARIOGRAM

** VARIOGRAM 3650 BLASTHOLE DATA ** AREA 'A' FOR ZN

ASSAYS = 508. AVG. = 4.3779 VARIANCE = 1.7211

PAIRS -H- DRIFT V(H) AVG *V(H) .688 1.377 2.065 2.754 3.442

12
11
10
9
8
7
6
5
4
3
2

PAIRS	-H-	DRIFT	V(H)	AVG	*V(H)
1	1220.	16.	.019	.881	4.340 .888
2	3514.	31.	.040	1.109	4.323 1.123
3	5665.	50.	.087	1.324	4.320 1.342
4	7347.	70.	.163	1.514	4.291 1.545
5	8649.	90.	.177	1.665	4.279 1.703
6	9637.	110.	.200	1.779	4.283 1.818
7	10161.	130.	.187	1.864	4.278 1.907
8	10536.	150.	.152	1.927	4.307 1.959
9	10594.	170.	.141	1.906	4.317 1.933
10	10364.	190.	.137	1.863	4.324 1.887
11	9767.	210.	.216	1.855	4.382 1.854
12	9071.	230.	.269	1.822	4.409 1.809
13	8224.	250.	.300	1.769	4.464 1.735
14	7012.	270.	.340	1.737	4.509 1.687
15	5814.	290.	.353	1.608	4.538 1.551
16	4439.	309.	.339	1.584	4.588 1.511
17	3112.	329.	.321	1.567	4.636 1.480
18	1772.	349.	.234	1.411	4.672 1.322
19	958.	369.	.037	1.353	4.724 1.253
20	507.	389.	-.199	1.452	4.841 1.313

