

**WJR**

019478



**WATERPROOF  
FIELD  
WF7**



**WATERPROOF**



**R. D. PENHALL LTD.**  
2685 MAPLE STREET  
VANCOUVER 9, B.C.  
TELEPHONE (604) 736-7271

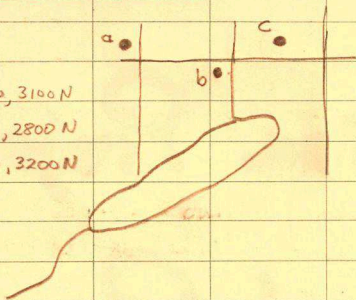
Tintina Project

Anvil Range

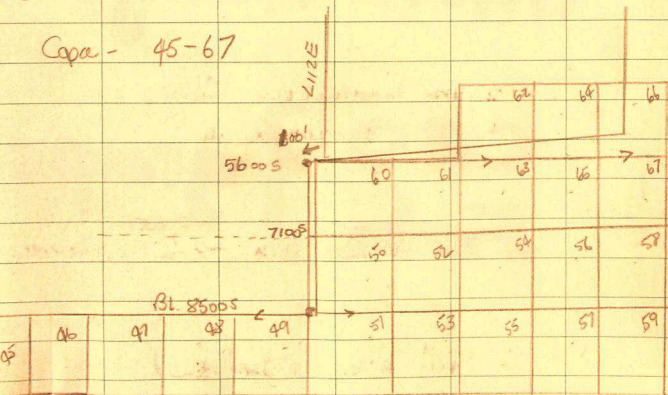
CEO } groups  
Foto }

# Nasty Rotary Holes.

- a) L82W, 3100N
- b) L72W, 2800N
- c) L68W, 3200N



Case - 45-67



Complete all Line 48E → 176E ↙ 10,000S  
 Continue B.C. 8500S → 176E.

Drill Hole

72-1 -

Elevation

3062'

72-2

3107'

72-3

3142'

72-4

3160'

---

Names

Bill Chomas      Caps 45 - 52

Doug Slater      Caps 53 - 60

Elen Sargeant      Caps 61 - 67

---

August 1<sup>st</sup>

Linecutters finished on CEP  
claims - churning left.

August 2<sup>nd</sup>

Linecutters to Ross Pines - 2 trips in Beaver.

August 3<sup>rd</sup>

- Drill hole at 200' shell  
in arbutus.

- August 4<sup>th</sup> - Drill hole to 240'
- overburden.
  - D-6 stuck at 3<sup>rd</sup> drill site
  - INTA helicopter from Faro with Brock + Gavin Deane.
  - Used helicopter to move out Turam crew to Foto Gp. in the pm.

August 5<sup>th</sup>

- drill at 259' - overburden.
- broken down - needs fan belt.
- Bent to Anvil for D-7 to pull out 6.
- FHZ from Ross with JSB + Groceries

Aug. 6<sup>th</sup> - Sunday

- Hole at 259' Broke off 8' casing at bottom.
- D-6 being pulled out with Anvil's - 7
- B. waight from Faro with meat.

Aug 7<sup>th</sup>

- drill at 259' still drilling thru broken casing.
- cat out of hole.
- D-7 back to Anvil
- One cat skinner working with Anvils 7 on road to swim.
- Helicopter (B. Waugh) with groceries
- FHZ will also on way to Hess.

Aug 8<sup>th</sup>

- Drill hole skidded 200' north
- broke off casing again at 259'
- left 10' plus frac in hole (previous breakage. 2'+ remaining still)
- W. Waugh in from Faro, recy north of Faro est. 2 hrs.

Aug 9<sup>th</sup>

- visited drill @ 4:00 pm with
- VIP's - @ 26' on new hole.
- Bert in Faro, new helper coming in.
- Cat skinner fixing road.
- Beaver from white horse with 3 VIP's  
Jeff Snow, Ted Foss, Tom Smith.

Aug 10<sup>th</sup>

- Beaver from Ross - 7am

Brought 2 drums reg gas + 1 propane.

took 3 vips + Brock. to Ross.

- Drill at 136' at 10am, expect to be at 200' tonight, got Skinner working as helper on day shift.
- a great sunny day!

Aug 12<sup>th</sup>

Photo Stones - Lock Geochem.

LO 36E

- banded qtz rich phyllite
- bands of qtz ~  $\frac{1}{4}$ " wide
- phy composed of sericite.

Aug 7<sup>th</sup>

- drill at 259' still drilling thru broken casing.
- cat out of hole
- 10-7 back to Anvil
- One cat skinner working with Anvils 7 on road to swim.
- Helicopter (B. Waugh) with groceries
- FHZ will also on way to Hess.

Aug 8<sup>th</sup>

- Drill hole skidded 2100' north
- broke off casing again at 259'
- Left 10' plus fixate in hole (previous breakage, 2'+ remaining shell)
- w. Waugh in from Faro, recy north of Foto est. 2 hrs.

Aug 9<sup>th</sup>

- visited drill @ 4:00 pm with
- VIP'S - @ 26' on new hole.
- Bert in Faro, new helper coming in.
- Cat skinner fixing road.
- Beaver from white horse with 3 VIP'S  
Jeff Snow, Ted Fass, Tom Smith.

L0 48E

- light grey gbsite with phyllitic partings.
- to grey, sericite gbs phyllite
- laminae -  $\frac{1}{8}$ " - 1" apart.

L0 30E

- dark-light grey sericite chlorite phyllite - minor graphite.

L2N 38E

- grey gbs sericite phyllite
- bands  $\frac{1}{8}$  -  $\frac{1}{2}$ "
- some rust on phyllitic surfaces.

L3S-35E

- sericite phyllite - minor gbs - < 50%
- on contact of 3a + 3b.

L8N 42E

- highly folded gbsite with phyllitic partings to gbs sericite phyllite.

Aug 7<sup>th</sup>

- drill at 259' still chulling thru broken casing.
- cat out of hole.
- D-7 back to Anvik
- One cat skinner working with Anviks 7 on road to swim.
- Helicopter (B. Waugh) with groceries
- FHZ will also on way to Hess.

Aug 8<sup>th</sup>

- Drill hole skidded 2100' north
- broke off casing again at 259'
- left 10' plus fixare in hole (previous breakage. 2'+ remaining shell)
- w. waugh in from Faro, recy north of Foto est. 2 hr.

Aug 9<sup>th</sup>

- visited drill @ 4:00 pm with
- VIP'S @ 26' on new hole.
- Bent in Faro, new helper coming in.
- Cat skinner fixing road.
- Beaver from whitehorse with 3 VIP'S  
Jeff snow, Ted Fass, Tom Smith.

L55 33E

- dark grey, sericite phyllite.

L18S 49E

- dark-light grey, qb sericite phyllite  
bands  $\frac{1}{8}$  -  $\frac{1}{4}$ " thick.

L11N 39E

- light grey qtzite  
- leuconite extensive on partings.

L11N 37E - qb sericite phyllite

- bands 1 mm -  $\frac{1}{8}$ "

L11N 38E - highly rusty qtzite

- leuconite in fractures & wgs.

L12N 40E - light grey qtzite to qb  
sericite phyllite

L12N 39E - light grey qb sericite  
phyllite (5, 95% qb)

- minor leuconite in S<sub>2</sub> surfaces.

L2N - 36E

- highly folded qb seriate - minor graphite phyllites.
- and - 90% qb.

L3S - 37E

- qb seriate phyllite
- qb bands -  $< \frac{1}{8}$ "

L4S - 36E

- grey qb seriate phyllite lamina -  $\frac{1}{8}$  -  $\frac{1}{4}$ " thick

L0 38E

- grey qb seriate phyllite

L4N, 35E -

- grey qb seriate phyllite to qbite
- highly contorted and folded.
- minor chlorite.

L2S, 37E

- grey qbite to qb seriate phyllite
- phyllitic partings  $\sim \frac{1}{4}$  -  $\frac{1}{8}$ "

Aug 13<sup>th</sup>

- Completed DBH-72-1# - 539'
- no cat hours.

Aug 14

- moving drill i.e.
- staking Foto 201-216 claims

Aug 15

- 72-2 - 30'
- plotting & logging

Aug 16<sup>th</sup>

- Foto Mapping
- FH2 - picked up survey equip

Aug 17<sup>th</sup>

- DBH-72-2
- Drill @ 220' @ Lunch.
- still overburden.

Aug 18<sup>th</sup>

- 72-2 @ 290' overburden
- + at 3:00pm.
- Bill Wough joined
- Torom crew
- Brian left for Vancouver
- Terminate Sunday.

L8N 40E

- gbs with phyllitic partings to grey gbs sericite phyllite.

L45-32E

- dark grey sericite phyllite
- minor chlorite & graphite.

L65-34E

- dark grey sericite phyllite
- minor graphite - no gbs.

L125 51E

- light grey gbs sericite phyllite to phyllitic gbs.
- minor amounts.

L125-50E

- sericite graphite gbs phyllite
- highly folded -  $F_2$  folds ??
- later  $F_3$  folds -  $150^\circ$

B.L. 0 - 4 N

- light grey sericite phyllite
- weathers tan brown on  $S_2$  surfaces

L 42 N, 4W. Br.  $300^\circ/20^\circ S$

- light grey sericite phyllite
- weathers red-tan on  $S_2$

B.L. 0 31 N

- med grey sericite phyllite
- darker specs of biotite?

L 43 N 5W Br.  $310^\circ/25^\circ S$

- grey sericite phyllite
- some g/b rich bands
- minor.

L 45 N 8W Br.  $320^\circ/30^\circ S$   
light grey sericite phyllite

L 54 N 300W Br.  $300^\circ/20^\circ S$

- med-dark grey sericite (graphite)
- phyllite weathers red brown.

L12N 38E

- white gk.ite
- laminae in vugs & fractures
- adjacent to fault - appears silicified. & partly brecciated.

L13N 38E

highly rusty gk.ite to gk. ser phyllite  
laminae -  $\frac{1}{8}$  -  $\frac{1}{2}$ " wide.

L13N 37E

- light gray gk. serate phyllite

L14N - 37+50 E

- highly laminar gk. serate phyllite  
to gk.ite with phyllitic partings
- weathers rusty brown.

L15N - 38E

- gk. serate phyllite
- weathers rusty on phyllitic surfaces.

Aug 22nd

- Back to Faw in left handed tap and dynamite.
  - crew working for his return.
  - Bill Wough brought in growth crew
    - on Anisit
  - Drill stuck !!! god damn.
  - Crew all still stand by
- 

### Foto Stones

49P  
42E  
Thinly foliated dark-med grey  
gb seriate chlorite graphitic phy.  
strong L150.

48N, 46E  
Dark grey gb ser. grey phyllite  
folia  $< \frac{1}{8}$ "

12N, 31E  
Light grey gb ser. phyllite  
folia  $\sim \frac{1}{8}$ " thick (gb.)  
- few rusty vugs.

## Foto Stones

L40 N, 4W Br - 290/205

- med grey - light grey sericite phyllite.

L40 N, 1W

- light grey sericite phyllite
- some siliceous bands - qtz rich??  
- could be volcanic??
- generally more sericite phyllite  
minus qtz.

L55 N 200 W Br. 295/155

- med - dark grey sericite  
(graphite phyllite)

L 43 N 6W - Br. 330/305

- med grey sericite - biotite  
phyllite - little - no qtz.  
weathers red-brown.

L54 N, 400 W light grey sericite phyllite

6N 27E

- seriate phyllite - med grey  
- minor biotite?

46N, 48E

light - med grey  
qzite - B. ser. phyl.  
folia  $\frac{1}{4}$ " -  $\frac{1}{16}$ "

42N, 52E

light grey q s. p.  
fol.  $\frac{1}{8}$ " -  $\frac{1}{16}$ "  
rusty on S<sub>2</sub>

36N 58E

fine gr. low grade qb  
chl, bio, ser. schist.  
light grey

43N 51E

light grey qzite to qb  
ser. sch.  
folia  $\frac{1}{16}$  -  $\frac{1}{8}$ " thick.  
minor rusty specs.

Aug 19<sup>th</sup>

- Drill @ 340' / hopefully bedrock surface
- Will - finished 72-450 yesterday
- today went over to Anunt Camp.
- shouldn't pay overtime today.

Aug 20<sup>th</sup>

- Sunday - 5:00 pm
- drill @ 503'
  - logged - appearing as greenstone.
  - ceased 72-2
  - mapped all day at Foto.
  - D-6- was stuck, brought in D-7 to pull out the 6.
  - night shift pulling casing

Aug 21<sup>st</sup>

- mapping on Foto.
- drill casing stuck
- tried hammering

27 N 60 E

- biotite ser. group phyllite
- bio.  $\leq \frac{1}{16}$ "
- near schist contact.

24 N 61 E

- light grey g.s.p
- folia  $\leq \frac{1}{16}$ "

20 N 65 E

- light grey banded qb  
bio ser. phy-schist  
still a phyllite
- some fine gr. biotite

32 N 60+50 E

light green cbl. ser. bio  
phyllite

- augens  $\sim 50\%$
- near schist contact.
- gradual to schist.

32 N, 62 N

- fine-med gr. bio cbl sch.
- augens  $\sim 70\%$
- bio  $\times$  to  $S_2$  ( $\sim \perp$  to  $S_2$ )

L98N, 39E - light - red grey gbsite to  
q.s. phyllite  
- rusty on S<sub>2</sub> surfaces.

L17N, 30E - light grey qb ser. phy.

L40N 47E - dark grey gbsite to  
qb ser. gray. phyllite

L48N 40E  
- red grey qb ser. phyllite  
- thin lina.  $\approx \frac{1}{8}$ " , some graphite.

8N 30E q.s. phy in contact with  
grey ser. phyllite.

8N, 31E q.s. ph. light grey.  
- rusty on S<sub>2</sub>  
- lina.  $\frac{1}{8}$ "

49N, 41E - grey qb ser. phy.  
- laminae up to  $\frac{1}{4}$ " thick.

L19S 55E

- banded med gr. greenstone
- cell. rich, no visible mineralization.

L19S 46E

light-med grey qb s.s. ph.  
folia  $\sim \frac{1}{8}$ " in size.

L16N 36E

- pale grey-greenish f.z. t.  
with phyllitic partings  
Br. 0/35w  
strong 150 lin  
F2 folds -  $\sim 20^\circ$

18S, 52E

light grey qb s. ph.  
fol.  $\frac{1}{16}$  -  $\frac{1}{2}$ "  
variable.

18S 54E

- light grey q.s. p.
- bands  $\frac{1}{2}$  -  $\frac{1}{4}$ "
- qbite with phyllitic partings.

18N, 63E -

- bio-ser. ph.
- bio < schist termination.

22N, 66E

- boudins + q.s. ph.
- becoming schistose.
- chl. + boudins forming.

22N, 68E

- q.s. ser. ph.
- boudins + p. sp. biotite forming.

16N, 53+50E

dark grey qb ser. prop. phyllite.

18N 53E

dark grey qb ser. prop. phyllite.  
folia ~  $\frac{1}{8}$  -  $\frac{1}{16}$ "

18N 63E

light greenish grey qb chl.  
ser. phyllite.

20 N 20 E - med grey sericite phyllite.

23 N 30 E light grey green qb  
ser chl. phyllite.

22 N 29 E light grey gbsite with  
phyllitic parting

17 N 22 E - grey ser. phyl.

21 N 29 E - gbsite with ser. phyl  
parting.

---

Aug 23<sup>rd</sup>

- Bert arrived 6:30 am with  
topo dynamite
- Gravity crew working on Forts

65 41E -

- light grey gbs - gsp.
- folia  $\sim \frac{1}{8}$ "
- few rusty imp.

65 - 37E

- med grey ser. phyllite
- no visible gb.

20S 45E

- gbs to g. s. g. p.
- gb bands  $\frac{1}{2}$ " -  $\frac{1}{4}$ "
- highly rusty in S<sub>2</sub>

17+50S

50E

- thickly banded light grey
- g. s. p.
- folia  $\sim \frac{1}{16}$ "

19S 47E

- gb s-ph - light grey.
- folia  $\sim \frac{1}{8}$ "


Aug 24/72

- 3 helicopter bells total 6.5 hrs since Aug 6<sup>th</sup>.
- Drill moved to 172-3 setups
- lost 80' casing after bleeding on 72-2
- Presently attempting to fix head - breakdown, no cost to us.
- Brock, Davis, Zolter stayed the night

Aug 25/72

- Dink left with JSB & REG.
- Beaver took water to Ross & Returned.
- Bill Waugh arrived with groceries - 8 hr
- Photo mapping
- Glen wants to terminate Aug 31.
- Drill started on day shift was at 20' at 4:00pm.
  - yesterday and This morning was breakdown time.

22 N , 32 E

- light grey shists - 9 p.
  - gbsite - 12 folds
- 

23 N 29 E - 9.5 p.

S<sub>2</sub> 0/35W

L<sub>2</sub> shungit 30°

L<sub>3</sub> 140°

- no sample

23 N 29 E

light grey gbsite - phyllitic  
partings 1 sericite.

20 N 19 E

dark grey graph. - ser. phy.

21 N 29 E

gbsite - gB - ser. p.  
- bands  $\leftarrow \frac{1}{2}$ "

21 N 23 E

- dark grey ser. phyllite  
- some chl + graph.

5 N 24 E -

- light - med grey gB  
ser. phy.

50N 35E -

dark grey g/b graph phyllite.

59N 30E

dark grey g/b graph phyllite.

41N 16E

- dark grey ser graph.  
phyllite.

Aug 27<sup>th</sup>

- 72-3 @ 300' @ 2: pm
- in 3a - getting more g/b rich with depth.
- Bert & Art Steamer out
- Anvil crew quit
- Gravity on CED
- Turcom on Foto

L22N 30E - light grey gbsite - gsp.

L21, 33E - light grey thinly bedded  
g.s.p.

L22-35 E - gbsite - light grey gsp.  
bands  $\frac{1}{2}$  -  $\frac{3}{8}$ " wide.

L21 37E - light grey gbsite.  
minor specs of perite??

L20 37E - rusty - gbsite  
- gbsite with phyllic partings  
-  $F_2$  holes common.

L22 38E - light grey gbsite - gsp

L20 38 - gsp.

# Folio Stones

56 N 53 E

- qb all. bio schist (+sericite)
- coarse gr.
- near contact with ser. phy.

39 N, 14 E:

dark grey gray ser phy.

49 N 33 E - qb rich phy (sericite)  
minor rust in  $S_2$

57 N 53 E Blk qb gray phy.  
laminae  $\sim \frac{1}{8} - \frac{1}{8}''$

62 N 49 E gray qb ser. phy.  
Some white #  $S_2$

60 N 48 E highly contorted qtz  
ser. phy + bwite - almost  
a schist.

Aug 26<sup>th</sup>

- Drill @ 120' @ 5:00pm (723)
- Bedrock probably at 35-40'
- drilled with Tricone to 86'
- Gravity, in short lines on south CED.

Photo Shows

64 N, 30E - dark-med grey gbsite  
to slt ser. graph. phy.  
few green streaks  
strong L150

58 N 53 E

dark grey qb ser. graph.  
phyllite.

64 N 30E

- Blk. qb. graph. phy.

57 N 30E

- med grey gbsite - qb graph. phy.

Sept 2<sup>nd</sup>

- Bill Waugh. care in  
motel Turan → Cab
- Gravity — Fly Camp 1.
- Took out Glen Sargeant.
- Drill broken night before @ 133'

Sept 3<sup>rd</sup>

- the kids put day
- Tovam on CED
- Gravity on Foto
- Drill Broken down, no change

Sept 4<sup>th</sup>

- Drillers moved cook tent  
to Cub L.
- Flair Bomber started to burn.
- Tovam on CED
- Gravity on Foto
- CR - Foto Geology.

Sept 5<sup>th</sup>

Drillers (3) moved sled + put  
a camp to 1/2 mile S of Cub-Lake.

Aug 28<sup>th</sup>

- Finished 72-3 in morning
- in top of 3a
- no supplies a good 9/10
- cat went to 72-4 on top of hill
- Gravity + Turam on Foto

Aug 29<sup>th</sup>

- Drill crew working on casing
- noon - check → Arrive Camp for Bert + cat Drives
- Gravity + Turam on Foto
- Began moving drill → 72-4

Aug 30<sup>th</sup>

- moving drill - cat stuck for 2hr.
- Turam - Foto
- Gravity - Foto
- Rolls brought in 2 men + fuel.  
took P. Ular, 2 45's  
& 1 propane.

Beaver Fitz came in with  
2 reg gas, 1 propane, & Jim Etsch.  
also P. Dean.

Sept 10<sup>th</sup>

- Drilling at 221' at end of day shift
- Turam on Moose Grid
- Gravity on Foto
- w/ Foto Geop
- Also changed night shift with Bomer.

Sept 11<sup>th</sup>

- Stopped drill at 371'
- cat stuck near end of Cub Lk at 9 pm.
- Turam on Moose.
- Gravity on Foto
- Benni came back in.

Sept 12<sup>th</sup>

- got out & stuck again  
Paul → thru! for D7
- Puller dismantled drill & pumps.
- Turam on Moose
- Gravity on Foto.

62N 31E  
dark grey sericite - graphite phyllite

51N 55E  
light grey g/bite → g/b  
sericite phyl. -  $S_2 = \frac{1}{8} - \frac{1}{2}$ " wide  
slightly rusty

64N 49E - dark grey ser. phyl.

36N 15E dark grey ser. prop. phyl.

51N 55E ser. bio. sch. to  
phyllite  
- light grey.

60N 42E dark grey g/b prop. ser. phyl.  
laminae  $< \frac{1}{8}$ "

57N, 43E dark grey g/b prop. phyl.

58N, 53E dark grey g/bite - g.g.p.

32N 14E - blk prop. phyl.  
bedding near horizontal

340/45W

Sept 16

- evening Bomer fell into pond - water over engine
- Drilled - nil
- set up only
- 2 swelens on Foto

Sept 17

- Toramto Rose
- FHC - brought 2 reg, 1 diesel
- Bomer pulled out with car.
- Hole at 50' bedrock.
- Swelens on Foto
- WP - on Bomer.

Five night no night shift

Sept 18

- work on Bomer
- drilling at - 75' (morning)
- 2 swelens on Foto

Sept 19

- Swelens on Foto
- work on Bomer + Logged 72-4  
dull @ 180'

Sept 6<sup>th</sup>

Rain

- Finish camp mess.
- 5 men (2 came in with Bill Waight at 8am)
- Turam never left camp
- Gravity never left camp.

Sept 7<sup>th</sup>

- Turam on Copac Grid
- Drillers waiting for motor which came in (no charge on 5 men)

Sept 8<sup>th</sup>

- 5 Drillers tried changing motors & machines (no charge) breakdown.

Sept 9<sup>th</sup>

- Drilling starting at 133' at 9am
- Turam on Copac
- Gravity on Foto
- will pole Bomber to thool with old Rig
- Bed never returned.
- I took our Bomber up for

Shift change at 12:00 am:

- Bill Waight flew in with groceries took out Bani & Walter.

- Sept 22 - Drill Hare  
- WR - showing site  
3 - machine at 70-6

- Sept 23 - waiting for hose line  
- finish set-up  
- wife → Amal with  
cat for hose + groceries  
+ coil stove.  
- break down for - 20 - hours

- Sept 24  
- laying hose line  
- soakers in Foto  
Bounty in Foto  
WR - logging

- Sept 25 - water line started  
and heater stopped  
- line frozen.

Sept 13

Boil D-7a 6 used to get  
dull & borer faster to Cub  
Lake - 6 stuck once again in  
wet hole #3.

Turam finished

Sept 14

Turam picking up coil  
Lead Two coils to 72-5  
Tipped drill over - took 3 hrs.  
to begin again. 2144 = 95

Sept 15

- Turam waiting for plane
- Albert Frank Foto soils
- Gravity on Foto
- D-6 to Cub L. for 3 Gas  
needing diesel
- should be dulling.

Sept 30

- 8am - drilling at 95'
- Trimming down to 101 from 20' - hit sand & steel zones ~~on~~<sup>on</sup> night shift
- wolf arrived yesterday afternoon with 2 tanks.

Oct 1<sup>st</sup> - Resting in town.

- Oct 2<sup>nd</sup> - 9am
- Drilling at 357'
  - 3a, 2d, 2b mixture
  - no visible Pb-Zn
  - minor Py + Cu in gk.

- Oct 3<sup>rd</sup> -
- ~~Stopped~~ drilling at 539'
  - 2d + 2b + 2e.
  - Began taking down - 3 pm.
  - wolf took out 1500' hose line to Anvil Camp.

Sept 20

- drill at 320'
- stuck rods due to graphite.
- no casing left to freeze down any further
- stuck cut pulled out
- no night shift.
- Albert & Frank cut wood.

Sept 21

- Bill Wough - 2.3 hr.
- Braught, S.S.B. will III
- + 2 Aquitan Geol.
- + groceries
- moral soilers to Ford.

- Drilling 72-5 halted at 320'
- graphite stuck rods.
  - no night shift on 21<sup>st</sup>
  - halted now for 2 hr this morning. (stand by fuel)
  - Drill teen down today.

Sept 26

- Thawing water line
- Changing stove.
- W - lossing.

Sept 27

- dulling day shift +  
 $\frac{1}{2}$  night - at #3'  
bedrock - 8'  
rusty material.

Sept 28

Water line Frozen night  
before  
Thawing line  
ordered 2 - 1000 gal tanks  
Henry in welding

Sept 29

Dear Diary - today I arrived!  
Oh Piss!  
water supply ended near noon  
dullness began 3:00 pm.  
Will not arrive yet from Anvil  
Camp.  
Bill Waight took out Gravity Crew  
1.6 hr.

at 8<sup>th</sup> - finished file.