

019497

MT MAYE PROSPECT

105-K-6

MAGNETOMETER NOTES

1972 - 73

XuuZ

PACIFIC
WATERPROOF

LEVEL

NOTEBOOK No. 311

MAGNETOMETER
NOTES

MT. MYE

1972

= 1

LINE: 220 WEST		BASE STATIONS				
DATE: JUNE 22/72						
STATION	TIME	READING	BASE CHANGE	DIVISIONAL	CORR. RDG.	REMARKS
MAIN B.S.						
L220W 72N	2:30	200	0	0	200	
L220W 72N	2:40	200	0	0	200	
L220W 72N	2:50	200	0	0	200	
68N	2:51	280	0	0	280	
72N	2:53	200	0	0	200	
A 68N	2:55	280	0	0	280	
B 64N	2:57	250	0	+5 0	255	255
A 68N	2:59	280	0	+5 -5	280	
B 64N	3:01	260	+5	-10 0	255	255
60N	3:03	310	+5	0 +5	320	315
64N	3:05	250	+5	0 +10	255	
60N	3:07	310	+5	0 0	315	315
56N	3:09	360	+5	0 -5	360	360
60N	3:11	320	+5	0 -10	315	
56N	3:12	370	-10	0 0	360	360
52N	3:14	280	-10	0 -10	270	275
56N	3:16	370	-10	0 -20	360	
52N	3:18	300	-25	0 0	280	275
48N	3:20	290	-25	0 0	265	270
52N	3:23	300	-20	-5 0	275	
48N	3:25	300	-20	-10 0	270	270
44N	3:27	300	-25	0 +5	275	275
48N	3:29	290	-25	+5 +10	270	

LINE: 220 W		BASE STATIONS				
DATE: JUNE 22, 1972						
STATION	TIME	RDG.	BASE CHANGE	DIVISIONAL	CORR. RDG.	REMARKS
44N	3:31	290	-25	+10 0	275	275
40N	3:33	280	-15	0 -25	240	245
44N	3:35	340	-45	-20 -50	275	
40N	3:37	330	-45	0 -40	245	245
36N	3:39	360	-85	0 0	275	
40N	3:40	330	-85	0 0	245	
36N	3:42	360	-85	0 0	275	
32N	3:43	320	-85	0 -5	230	235
36N	3:45	370	-85	-10 -10	275	
32N	3:47	330	-85	0 -10	235	235
28N	3:49	280	-90	0 +5	190	190
32N	3:51	320	-95	+5 +10	230	
28N	3:53	270	-90	0 +10	190	190
25N	3:55	280	-80	0 0	195	200
28N	3:57	260	-75	+5 +10	185	
220W 25N	3:58	270	-75	+10 0	205	200

LINE: B.L. 25 NORTH - BASE STATIONS
 DATE: JUNE 22/72

STATION	TIME	RDG.	BASE CHANGE	DIURNAL	CORR RDG.	REMARKS
BASE STATION						
25 N 220W	4:07	270			200	
224W	4:05	310			235	225
220W	4:11	280			200	
224W	4:13	300			215	225
228W	4:15	350			270	265
224W	4:17	310			225	
228W	4:19	350			260	265
232W	4:21	380			295	
228W	4:23	350			265	
232W	4:25	380			295	
236W	4:27	380			300	295
232W	4:29	370			295	
236W	4:30	360			290	295
240W	4:32	360			290	285
236W	4:34	370			295	
240W	4:36	360			280	285
244W	4:38	330			250	245
240W	4:41	370			285	
25 N 244W	4:43	330			240	245
243W		340	-80		260	
242		330	-70		260	
241		360	-60		300	

LINE: B.L. 25 NORTH - BASE STATIONS
 DATE: JUNE 22, 1972

STATION	TIME	RDG.	BASE CHANGE	DIURNAL	CORR RDG.	REMARKS
B.S. 240W	4:42	340	-55		285	
		330	-55		275	
		340	-55		285	
		340	-55		285	
B.S. 236W	4:50	350	-55		295	
		320	-55		265	
		340	-45		295	
B.S. 232W	4:53	340	-45		295	
		330	-45		285	
		300	-55		245	
		320	-55		265	
B.S. 228W	4:57	320	-55		265	
		310	-55		255	
		290	-45		245	
		250	-45		205	
B.S. 224W	5:00	270	-45		225	
		240	-45		195	
		220	-40		180	
		220	-35		185	
B.S. 220W	5:03	230	-30		200	

LINE: B.L. 25N - BASE STATIONS						LINE: BASE LINE 25N - BASE STATIONS					
DATE: JUNE 22/72						DATE: JUNE 22/72					
STATION	TIME	RDG.	BASE DIURNAL CHANGE	CORR. RDG.	REMARKS	STATION	TIME	RDG.	BASE DIURNAL CHANGE	CORR. RDG.	REMARKS
B.S. 25N 220W	5:07	220	-20	200		25N 192W	5:54	210	-35	175	
216W	5:09	220	-20	200		188W	5:56	140	-40 -30	110	100
220W	5:11	220	-20	200		184W	5:58	100	-40	60	65
216W	5:13	220	-20	200		188W	6:00	135	-35	100	
212W	5:15	70	-25	45	35	184W	6:02	100	-35 35	70	65
216W	5:17	230	-30	200		180W	6:04	200	-30	170	175
212W	5:19	60	-25 -35	25	35	184W	6:06	90	-25	65	
208W	5:22	130	-35	95	85	180W	6:08	200	-25 -20	180	175
212W	5:25	80	-45	35		176W	6:00	270	-25	245	230
208W	5:27	130	-45 -55	75	85	180W	6:12	200	-25	175	
204W	5:29	600	-40	560	565	176W	6:14	240	-25 -10	215	230
208W	5:31	120	-35	85		172W	6:17	120	-20	100	90
204W	5:33	600	-35 -30	570	565	176W	6:19	260	-30	230	
200W	5:35	-20	-35	-55	-50	25N 172W	6:21	120	-40	80	90
204W	5:37	600	-35	565							
200W	5:39	-10	-40 -35	-45	-50	25N 173W	6:22	160	-35	125	
196W	5:41	160	-40	120	125			250	-30	220	
200W	5:42	-10	-40	-50				440	-25	415	
196W	5:44	170	-45 -40	130	125	B.S. 176W	6:25	250	-20	230	
192W	5:46	210	-40	170	175			120	-20	100	
196W	5:48	165	-40	125				110	-20	90	
192W	5:50	220	-45 -40	180	175			260	-25	235	
188W	5:52	130	-40	90	100	B.S. 180W	6:27	200	-25	175	stream

LINE: BASE LINE		DATE: JUNE 22/72		CORR		LINE: BASE LINE		DATE: JUNE 22/72		CORR	
STATION	TIME	RDG.	BASE DIURNAL CHANGE	RDG.	REMARKS	STATION	TIME	RDG.	BASE DIURNAL CHANGE	RDG.	REMARKS
		-10	-25	-35		B.S. 204W	6:46	560	+5	565	
		-70	-25	-95				120	0	120	
		+160	-25	135				110	-5	105	
B.S. 184W	6:29	90	-25	65				130	-10	120	
		70	-20	50		B.S. 208W	6:49	100	-15	85	
		90	-15	75				130	-15	115	stream
		130	-10	120				120	-15	105	
B.S. 188W	6:32	110	-10	100				80	-15	65	
		150	-10	140		B.S. 212W	5:54	50	-15	35	
		200	-15	185				20	-15	-5	
		150	-20	130				20	-10	10	
B.S. 192W	6:35	200	-25	175				60	-10	50	
		50	-20	30		B.S. 216W	5:57	210	-10	200	
		130	-15	115				250	-10	240	
		320	-10	310				260	-5	255	
B.S. 196W	6:40	130	-5	125				230	0	230	
		20	-5	15		B.S. 220W	7:00	200	0	200	
		-50	-5	-55							
		-130	-10	-140							
B.S. 200W	6:43	-40	-10	-50							
		260	-10	250							
		430	-5	425							
		-200	0	-200							

LINE:		TIE LINE -		BASE STATIONS	
DATE:	DATE:	RDG.	BASE DIURNAL CHANGE	CORR. RDG.	REMARKS
	JUNE 23/72				
STATION	TIME	RDG.	BASE DIURNAL CHANGE	CORR. RDG.	REMARKS
220W 72N	9:15	200	0	200	
72N	9:25	200	0	200	
76N	9:27	160	-5	155	145
72N	9:29	190	-10	200	
76N	9:31	150	-5 -15	135	145
T.L. 80N 220W	9:33	180	-10	170	165
76N	9:35	160	-15	145	
80N 220W	9:37	180	-20	160	165
T.L. 80N 220W	9:42	180	-15	165	
216W	9:43	160	-15	145	
220W	9:45	180	-15	165	
216W	9:47	160	-15	145	
212W	9:49	150	-15	135	
216W	9:51	160	-15	145	
212W	9:53	150	-15	135	
208W	9:55	160	-15	145	
212W	9:57	150	-15	135	
208W	9:59	160	-15	145	

LINE:		TIE LINE -		BASE STATIONS	
DATE:	DATE:	RDG.	BASE DIURNAL CHANGE	CORR. RDG.	REMARKS
	JUNE 23, 1972				
STATION	TIME	RDG.	BASE DIURNAL CHANGE	CORR. RDG.	REMARKS
204W	10:01	140	-5	135	125
208W	10:03	140	+5	145	
204W	10:04	130	-5 +15	115	125
200W	10:07	130	-5	125	120
204W	10:09	130	-5	125	
200W	10:11	120	0 -5	115	120
196W	10:13	140	0	140	135
200W	10:15	120	0	120	
196W	10:17	130	+5 0	130	135
192W	10:19	140	0	140	135
196W	10:21	140	-5	135	
192W	10:23	140	-5 -10	130	135
188W	10:25	160	-5	155	150
192W	10:27	140	-5	135	
188W	10:29	150	0 -5	145	150
184W	10:31	160	0	160	160
188W	10:33	150	0	150	
184W	10:35	160	0	160	160
180W	10:37	150	+5	155	160
184W	10:40	150	+10	160	
180W	10:42	150	+10 +15	165	160
176W	10:44	140	+10	150	150
180W	10:46	150	+10	160	

LINE:		TIE LINE -		BASE STATIONS	
DATE:	DATE:	RDG.	BASE DIURNAL CHANGE	CORR. RDG.	REMARKS
	JUNE 23, 1972	200	-45	155	
	11:36	170	-45	125	
B.S. 216W	11:48	190	-45	145	line 216W 80+10N hit
		200	-45	155	T.L. at 215' +50.
		210	-45	166	
		200	-45	155	
B.S. 220W	11:52	210	-45	165	line 220W 80+25W hit T.L. at 217+30W
G.L.					
B.S. 220W	11:55	210	-45	165	
224W	11:57	220	-40	180	185
220W	11:58	200	-35	165	
224W	12:00	220	-35	190	185
228W	12:02	200	-35	165	160
224W	12:04	220	-35	185	
228W	12:06	190	-35	155	160
		200	-35	165	line 228W 80+20N hit
		210	-25	185	T.L. at 227.3 W.
		220	-25	195	
B.S. 224W	12:10	210	-25	185	

LINE:		TIE LINE		BASE STATIONS	
DATE:	DATE:	RDG.	BASE DIURNAL CHANGE	CORR. RDG.	REMARKS
	JUNE 23, 1972	200	-25	175	
		260	-25	175	
		210	-35	175	
B.S. 80N 220W	12:13	200	-35	165	line 220W 80+30N hit T.L. at 219+25
B.S. 220W 76N	12:15	180	-35	145	
MAIN B.S. 220W 72N	12:17	210	-10	200	

LEAF: DATE:		212 WEST JUNE 23, 1972		LEAF: DATE:		212 WEST JUNE 23, 1972		BASE DIURNAL CHANGE		CORR. RDG.		REMARKS	
STATION	TIME	RDG.	BASE DIURNAL CHANGE	CORR RDG.	STATION	TIME	RDG	BASE DIURNAL CHANGE	CORR. RDG.	REMARKS			
MAIN B.S	1:18	230	-30	200	212W 82N		250	-40	210				
220W 76N	1:20	200	-55	145	61W		250	-40	210				
P.L. 216W	1:23	200	-55	145	60N	1:40	200	-35	165				
T.L. 212W	1:25	210	-75	135	59		240	-35	205				
					58		260	-35	225				
212W 80N		210	-55	155	57		280	-35	245				
79		220	-55	165	56		280	-35	245				
78		230	-55	175	55N		250	-30	220				
77		230	-55	175	54		320	-30	290				
76N		220	-55	165	53		330	-30	300				
75		240	-50	190	52		340	-30	310				
74		240	-50	190	51		320	-30	290				
73		230	-50	180	50N	1:47	370	-25	345				
72		220	-50	170	49		350	-25	325				
71N		240	-50	190	48		350	-25	325				
70N	1:33	240	-45	195	47		280	-25	255				
69		220	-45	175	46		240	-25	215				
68		200	-45	155	45N		220	-20	200				
67		190	-45	145	44		220	-20	200	line			
66		210	-45	165	43		200	-20	180	→ NW, SE			
65		220	-40	180	42		180	-20	160				
64		230	-40	190	41		200	-20	180				
212W 63N		260	-40	220	212W 40N	1:54	240	-15	225	st. 39+80 → SW			

		LINE: 212 WEST DATE: JUNE 23, 1972					LINE: 212 + 208 WEST DATE: JUNE 23, 1972				
STATION	TIME	RDG.	BASE DIURNAL CHANGE	CORR. RDG.	REMARKS	STATION	TIME	RDG.	BASE DIURNAL CHANGE	CORR. RDG.	REMARKS
212W 39W		270	-15	255		212W 16W		50	-5	45	
38		340	-15	325		15		100	-5	95	
37		400	-15	385		14		140	-5	135	
36		280	-15	265		13		180	-5	175	
35P		220	-10	210		12		180	-5	175	
34		240	-10	230		11		170	-5	165	
33		230	-10	220		10N	2:19	160	-5	155	
32		230	-10	220		9		160	-10	150	
31		160	-10	150		8		170	-10	160	
212W 30N	2:02	140	-5	135		7		160	-10	150	
29		200	-5	195		6		150	-10	140	
28		300	-5	295		5N		170	-10	160	
27		180	-5	175		4		170	-10	160	
26		50	-5	45		212W 3N	2:24	200	-10	190	
B5 212W 25N	2:05	40	-5	+35							
24		50	-5	+45							
23		40	-5	+35							
22		40	-5	+35		208W 5N	2:29	190	-10	180	
21		20	-5	+15	two no. 2) N	6		160	-10	150	
20N	2:10	20	-5	+15		7		190	-10	180	
19		20	-5	+15		8		250	-10	240	
18		10	-5	+5		9		280	-10	270	
212W 17N		10	-5	+5	two m, 18N	208W 10N		240	-10	230	

LINE : DATE :		208 WEST JUNE 23, 1972				LINE : DATE :	208W JUNE 23, 1972				
STATION	TIME	RDC	BASE DIURNAL CHANGE	CORR. RDC	REMARKS	STATION	TIME	RDC	BASE DIURNAL CHANGE	CORR. RDC	REMARKS
208W 11N		260	-15	245	stream	208W 30N	2:53	120	-15	105	
12		290	-15	275	→ ssw 11+85N	31		110	-15	95	
13		220	-15	205		32		210	-15	195	
14		140	-15	125		33		140	-20	120	
15N	2:36	100	-15	85		34		70	-20	-90	
16		80	-15	65		35N		130	-20	110	
17		90	-15	75		36		220	-20	200	
18		80	-15	65		37		180	-20	160	
19		70	-15	55		38		190	-20	170	
20N		20	-15	5		39		290	-25	265	
21		20	-15	5		40N	3:02	170	-25	145	
22		40	-15	25		41		160	-25	135	
23		70	-15	55		42		140	-25	115	
24		100	-15	85		43		160	-25	135	
B.S. 208W 25N	2:44	90	-5	85		44		250	-25	225	
B.S. 212 25N	2:47	50	-15	35		45N		310	-30	280	
B.S. 208W 25N	2:50	90	-5	85		46		320	-30	290	
26		100	-15	85		47		340	-30	310	
27		90	-15	75		48		340	-30	310	
28		80	-15	65		49		320	-30	290	
208W 29N		90	-15	75		50N	3:09	440	-30	410	
						51		480	-30	450	
						208W 52N		380	-35	345	

LINE: 208 WEST		208 WEST		CORR		LINE: 208 WEST		208 WEST		CORR		REMARKS	
DATE: JUNE 23, 1972		JUNE 23, 1972		RDC.		DATE: JUNE 23, 1972		JUNE 23, 1972		RDC.		REMARKS	
STATION	TIME	RDC.	BASE DIURNAL CHANGE	RDC.	REMARKS	STATION	TIME	RDC.	BASE DIURNAL CHANGE	RDC.	REMARKS	REMARKS	
208W 53N		340	-35	305		208W 76N		240	-55	185			
54		330	-35	295		77		250	-55	195			
55N		300	-35	265		78		240	-55	185			
56		310	-35	275		79		220	-55	165			
57		280	-35	245		79 208W 80N		200	-55	145		700 80N 81N is actually 80N	
58		250	-40	210		B.S. TA 80N 208W	3:34	200	-55	145			
59		220	-40	180									
60N	3:17	250	-40	210		B.S. TA 80N 212W	3:36	195	-60	135			
61		220	-40	180									
62		250	-40	210		B.S. TA 80N 208N	3:45	210	-65	145			
63		270	-40	230		208W 80N		210	-60	150			
64		260	-45	220		81		210	-60	150			
65N		220	-45	175		82		200	-60	140			
66		220	-45	175		83		210	-60	150			
67		220	-45	175		84		210	-60	150			
68		220	-45	175		85N		220	-60	160			
69		240	-45	195		86	3:50	220	-60	160			
70N	3:24	250	-50	205		86	4:01	220	-60	160			
71		260	-50	215		87		310	-70	240			
72		280	-50	230		88		250	-70	180			
73		280	-50	230		89		200	-70	130			
74		290	-50	240		90N	4:04	350	-70	280			
208W 75N		270	-50	220		91		190	-70	120			
						208W 92N		250	-70	180			

LOONE : 208 WEST DATE: JUNE 23, 1972				LOONE : 212 WEST DATE: JUNE 23, 1972							
STATION	TIME	RDG.	BASE DIRECTIONAL CHANGE	CORR. RDG.	REMARKS	STATION	TIME	RDG.	BASE DIRECTIONAL CHANGE	CORR. RDG.	REMARKS
208W 93N		230	-70	160							
94		210	-75	135		212W 110N	4:30	250	-95	155	
95		240	-75	165		109		260	-95	165	
96		270	-75	195		108		270	-95	175	
97		260	-75	185		107		280	-100	180	
98		230	-75	155		106		260	-100	160	
99		310	-75	235		105N		250	-100	150	
100N	4:13	310	-75	235		104		260	-100	160	
101		400	-80	320		103	4:50	280	-105	175	
102		-20	-80	-100		102	4:57	290	-105	185	
103		180	-80	100		101		280	-110	170	
104		200	-80	120		100N	5:00	290	-110	180	
105N		180	-80	100		99		270	-110	160	
106		200	-80	120		98		300	-110	190	
107		210	-85	125		97		300	-110	190	
108		230	-85	145		96		300	-120	180	
109		260	-85	175		95N		290	-120	170	
110N	4:25	260	-85	175		94		280	-120	160	
111	4:26	270	-85	185		93		260	-120	150	
112		260	-85	175		92		270	-120	150	
113		270	-90	180		91		280	-120	160	
114		250	-90	160		90N	5:07	300	-120	180	
208W 115N	4:30	250	-90	160		212W 89N		300	-120	180	

LINE:		212 WEST		CORR		LINE:		200 WEST		CORR	
DATE:		JUNE 23, 1972		RDG.		DATE:		JUNE 24, 1972		RDG.	
STATION	TIME	RDG.	BASE DIURNAL CHANGE	CORR RDG.	REMARKS	STATION	TIME	RDG.	BASE DIURNAL CHANGE	CORR RDG.	REMARKS
212W 88N		310	-120	190		IS					
87		270	-125	145		1220W 72N	8:29	90	+110	200	
86		310	-125	185		B.S. 1220W-76N	8:31	40	+105	145	
85W		290	-125	165		T.L. 216W	8:33	50	+95	145	
84		280	-125	155		B.S.					
83		250	-125	125		T.L. 212W	8:35	50	+85	135	
82		250	-125	125		B.S.					
81		260	-125	135		T.L. 208W	8:37	40	+105	145	
212W 80N		260	-125	135		B.S.					
B.S.						T.L. 204W	8:40	50	+75	125	
T.L. 80N 212W	5:15	260	-125	135		B.S.					
B.S.						T.L. 200W	8:43	50	+70	120	
T.L. 80N 208W	5:17	290	-145	145		200W 80N		70	+70	140	
B.S.						79		70	+70	140	
220W 72N	5:25	300	-100	200		78		80	+70	150	
						77		120	+70	190	
						76		120	+65	185	
						75N		160	+65	225	
						74		130	+65	195	
						73		190	+65	255	
						72		250	+60	310	
						71		300	+60	360	
						70N	8:52	320	+60	380	
						69		290	+60	350	
						68		280	+55	335	
						67		180	+55	235	
						66		180	+55	235	
						200W 65N		130	+55	185	

LINE: 200 WEST		DATE: JUNE 24, 1972			
STATION	TIME	RDG	BASE DIURNAL CHARGE	CORR RDG	REMARKS
200W 64N		140.	+50	190	
63		190	+50	240	
62		240	+50	290	
61		200	+50	250	
60N	8:58	210	+45	255	
59		220	+45	265	
58		220	+45	265	
57		230	+45	275	
56		270	+40	310	
55N		260	+40	300	
54		240	+40	280	
53		240	+40	280	
52		270	+35	305	
51		360	+35	395	
50N	9:05	440	+35	475	
49		760	+35	795	
48		480	+30	510	
47		340	+30	370	
46		260	+30	290	
45N		320	+25	345	align &
44		520	+25	545	44 + 20N → NW-SR
43		270	+25	295	
200W 42N		-20	+20	0	

LINE: 200 WEST		DATE: JUNE 24, 1972			
STATION	TIME	RDG	BASE DIURNAL CHARGE	CORR RDG	REMARKS
41	9:15	190	+20	210	no record of sta. 41N
40N		180	+20	200	okay this two sta. 40N
39		290	+15	305	
		270	+15	285	
		10	+15	25	
		3400	+15	3415	
38		6400	+15	6415	+30
		8700	+10	8710	
		3500	+10	3510	
		1175	+10	1185	
37		500	+10	510	+15
		590	+5	595	
36		800	+5	805	0
		230	+5	235	
35N		290	+5	295	-15
		200	0	200	
34		-260	0	-260	-20
		380	0	380	
33		490	0	490	-20
		330	-5	325	
32		50	-5	45	-25
		0	-5	-5	
31		90	-5	85	-30
		-40	-10	-50	
30N	9:31	-50	-10	-60	-35
		-30	-10	-40	
29		-50	-10	-60	-25
		320	-15	305	
28		650	-15	635	-50
		-100	-15	-115	
27		310	-15	295	-25
		-10	-20	-30	
26		340	-20	320	-20
B.S. 200W		60	-20	40	
BASE LINE 25N	9:37	-30	-20	-50	0
B.S.					
25N 204W	9:40	580	-15	565	
B.S.					
25N 200W	9:42	-30	-20	-50	
24		40	-20	20	
23		240	-20	220	
22N		830	-20	810	
		330	-20	310	
200W 21N		40	-20	20	

LINE: 200 + 20 WEST		CORR. RDG.		REMARKS	
DATE: JUNE 24, 1972	RDG.	BASE DIURNAL CHANGE	CORR. RDG.		
STATION	TIME	RDG.	BASE DIURNAL CHANGE	CORR. RDG.	REMARKS
200W 20N		290	-20	270	
		390	-20	370	
19		-20	-20	-40	
18		430	-20	430	
17		120	-20	100	
16		230	-20	210	
15 N	9:51	200	-20	180	
14		180	-20	160	
13		240	-20	220	
12		220	-20	200	
11		220	-20	200	
10N		230	-20	210	
9		220	-25	195	
8		240	-25	215	
7		230	-25	205	
6		210	-25	185	
200W 5N	9:58	190	-25	165	
204W 5N	10:03	240	-25	215	
6		180	-25	155	
7		190	-25	165	
204W 8N		220	-25	195	

LINE: 204 WEST		CORR. RDG.		REMARKS	
DATE: JUNE 24, 1972	RDG.	BASE DIURNAL CHANGE	CORR. RDG.		
STATION	TIME	RDG.	BASE DIURNAL CHANGE	CORR. RDG.	REMARKS
204W 7N		230	-25	205	
10N		240	-30	210	
11		280	-30	250	
12		300	-30	270	
13		230	-30	200	
14		220	-30	190	
15N	10:11	180	-30	150	
16		-20	-30	-50	
17		-20	-30	-50	
18		-40	-30	-70	
19		-50	-30	-80	
20N		-10	-30	-40	
21		20	-30	-10	
22		0	-30	-30	
23		70	-30	40	
24		200	-30	170	
B.S.					
204W 25N	10:21	600	-35	565	
B.S.					
200W 25N	10:23	-20	-30	-50	
B.S.					
204W 25N	10:25	590	-25	565	
26		280	-25	255	
27		160	-25	135	
204W 28N		-740	-25	-765	

LINE: 204 WEST		DATE: JUNE 24, 1972		LINE: 204 WEST		DATE: JUNE 24, 1972					
STATION	TIME	RDG.	BASE DIAL CHANGE	CORR. RDG.	REMARKS	STATION	TIME	RDG.	BASE DIAL CHANGE	CORR. RDG.	REMARKS
		70	-25	45							
204W 29N		440	-25	415		204W 52N		300	-30	270	
		320	-25	295							
30N		290	-25	265		53		360	-30	330	
31		190	-25	165		54		360	-30	330	
32		120	-25	95		55N		340	-30	310	
33		50	-25	25		56		270	-30	240	
34		120	-25	95		57		260	-30	230	
35N	10:40	140	-25	115		58		250	-35	215	
36		120	-25	95		59		250	-35	215	
37		-50	-25	-75		60N	11:01	220	-35	185	
38		-30	-25	-55		61		200	-35	165	
39		20	-25	-5		62		220	-35	185	
40N	10:44	200	-30	170		63		190	-35	155	
41		400	-30	370		64		250	-35	215	
42		400	-30	370		65N		290	-35	255	
43		480	-30	450		66		340	-35	305	
		600	-30	570		67		280	-35	245	
44		730	-30	700		68		220	-35	185	
		660	-30	630		69		210	-35	175	
45N		640	-30	610		70N	11:08	210	-35	175	
46		580	-30	550		71		280	-35	245	
47		480	-30	450		72		320	-35	285	
48		390	-30	360		73		310	-35	275	
49		380	-30	350							
50N	10:53	390	-30	360		204W 74N		290	-35	255	
204W 51N		350	-30	320							

LINE:		204 WEST		LINE:	
DATE:		JUNE 24, 1972		DATE:	
STATION	TIME	RDG.	BASE DIURNAL CHANGE	CORR. RDG.	REMARKS
204W 75N		280	-35	245	
76		260	-35	225	
77		230	-35	195	
78		200	-35	165	
79		190	-35	155	
204W 80N		170	-35	135	
B.S.					
BON 204W	11:16	160	-35	125	
B.S.					
BON 200W	11:20	160	-40	120	
B.S.					
BON 200W	11:27	160	-35	125	
B.S.					
BON 204W	11:29	160	-40	120	
204W 80N		170	-40	130	
81		170	-40	130	
82		160	-40	120	
83		160	-40	120	
84		170	-40	130	
85N		160	-40	120	
86		170	-40	130	
87		150	-40	110	
204W 88N		160	-40	120	

LINE:		204 WEST		LINE:	
DATE:		JUNE 24, 1972		DATE:	
STATION	TIME	RDG.	BASE DIURNAL CHANGE	CORR. RDG.	REMARKS
204W 89N		180	-40	140	
90N	11:37	180	-40	140	
91		200	-40	160	
92		170	-40	130	
93		-280	-40	-320	
94		1500	-40	1460	
95		510	-40	470	
96		330	-45	285	
97		370	-45	325	
98		260	-45	215	
99		350	-45	305	
100N	11:46	240	-45	195	
101		210	-45	165	
102		300	-45	255	
103		100	-45	55	
104		140	-45	95	
105N		150	-45	105	
106		160	-45	115	
107		150	-45	105	
108		180	-45	135	
109		180	-45	135	
110N	11:54	190	-45	145	
204W 111N		180	-45	135	

STATION	TIME	204 WEST		200 WEST		REMARKS
		DATE:	EDG	BASE DIURNAL CHANGE	DATE:	
204W 112N		JUNE 24, 1972	190	-50	140	
113			180	-50	130	
114			180	-50	130	
115N			190	-50	140	
116			190	-50	140	
117			200	-50	150	
118			220	-50	170	
119			240	-50	190	
120N	12:01		340	-50	290	
121			530	-50	480	
122			350	-50	300	
123			240	-50	190	
124			140	-50	90	
204W 125N	12:06		210	-50	160	
200W 125N	12:25		150	-60	90	
124			160	-60	40	
123			140	-60	80	
122			150	-60	90	
121			160	-60	100	
200W 120N			170	-60	110	

STATION	TIME	200 WEST		CORR. EDG.	REMARKS
		DATE:	EDG		
200W 119N		JUNE 24, 1972	150	-60	90
118			200	-60	140
117			160	-60	100
116			140	-60	80
115N			190	-60	130
114			410	-65	345
113			200	-65	135
112			170	-65	105
111			160	-65	95
110N	12:46		160	-65	95
109			160	-65	95
108			220	-65	55
107			150	-65	85
106			190	-65	125
105N			160	-65	95
104			170	-65	105
103			160	-65	95
102			210	-65	145
101			210	-65	145
100N	12:49		190	-65	125
99			150	-65	85
98			200	-65	215
200W 97N			200	-70	210

LINE DATE	TIME	RDG.	BASE DIURNAL CHANGE	CORR RDG.	REMARKS
200 WEST JUNE 24, 1972					
200W 96N		200	-70	130	
95		200	-70	130	
94		160	-70	90	
93		130	-70	60	
92		130	-70	60	
91		150	-70	80	
90N	12.57	160	-70	90	
89		160	-70	90	
88		150	-70	80	
87		160	-70	90	
86		160	-70	90	
85		160	-70	90	
84		160	-70	90	
83		190	-70	120	
82		186	-70	110	
81		200	-70	130	
200W 80N		180	-70	110	
B.S. 80N 200W	1:05	190	-70	120	
B.S. 80N 204W	1:07	190	-65	125	
B.S. 80N 208W	1:09	210	-65	145	
B.S. 80N 212W	1:11	200	-65	135	
B.S. 220W 72N	1:15	240	-60	200	

LINE DATE	TIME	RDG.	BASE DIURNAL CHANGE	CORR RDG.	REMARKS
196 WEST JUNE 24, 1972					
B.S. 220W 72N	2:30	260	-60	200	
B.S. 80N 212W	2:35	230	-95	135	
B.S. 80N 208W	2:37	250	-105	145	
B.S. 80N 204W	2:39	230	-105	125	
B.S. 80N 200W	2:42	230	-110	120	
B.S. 80N 196W	2:44	245	-110	135	
196W 80N		240	-110	130	
79		240	-110	130	
78		260	-110	150	
77		280	-110	170	
76		340	-110	230	
75N		320	-110	310	
74		1700	-110	890	
73		170	-110	60	
72		240	-110	130	
71		300	-105	195	
70N	2:55	350	-105	245	
69		400	-105	295	
68		400	-105	295	
67		360	-105	255	
66		310	-105	205	
196W 65N		280	-105	175	

stations
89 & 90N
are 50'
apart

stations
85 & 86
are 50'
apart

320
-110
210
-110
100
-110
-3000
-110
-3880
60

STATION	TIME	196 WEST			REMARKS
		RDG.	BASE DIRMAL CHANGE	CORR RDG.	
169W 64N		270	-105	165	
63		320	-105	215	
62		340	-105	235	
61		350	-105	245	
60N	3:02	340	-105	235	
59		360	-100	260	
58		370	-100	270	
57		320	-100	230	
56		300	-100	200	
55N		330	-100	230	
54		320	-100	220	
53		360	-100	260	
52		390	-100	290	
51		450	-100	350	
50N	3:16	500	-100	400	
49		530	-100	430	
48		470	-95	375	
47		450	-95	355	
46		500	-95	405	
45N		460	-95	365	
44		360	-95	265	
43		520	-95	425	
169W 42N		370	-95	275	

STATION	TIME	196 WEST			REMARKS
		RDG.	BASE DIRMAL CHANGE	CORR. RDG.	
196W 41N		20	-95	25	
40N	3:17	130	-95	35	
39		380	-95	285	
38		230	-95	135	
37		520	-90	430	
36		20	-90	-70	
35N		350	-90	260	
34		-50	-90	-140	
33		200	-90	110	
32		-50	-90	-140	
31		-1000	-90	-1090	
30N	3:27	240	-90	150	
29		-40	-90	-130	
28		350	-85	265	
27		250	-85	165	
26		100	-85	15	
BS.					
196W 25N	3:40	210	-85	125	
BS.					
192 25N	3:43	260	-85	175	
BS.					
196W 25N	3:45	210	-85	125	
24		300	-85	215	
23		210	-85	125	
22		250	-85	165	
196W 21N		300	-85	215	

		196 WEST & DATE JUNE 24, 1972		192 WEST		
STATION	TIME	RDG.	BASE DIAL CHANGE	CORR RDG.	REMARKS	
196W 20N		280	-85	195		
19		300	-85	215		
18		390	-85	305		
17		360	-85	275		
16		320	-85	235		
15N	3:52	290	-85	205		
14		280	-80	200		
13		280	-80	200		
12		260	-80	180		
11		280	-80	200		
10N		460	-80	380		
9		210	-80	130		
8		210	-80	130		
7		440	-75	365		
6		280	-75	205		
196W 5N	4:01	190	-75	115		
192W 5N	4:05	400	-75	325		
6		390	-75	315		
7		280	-75	205		
8		400	-70	330		
192W 9N		130	-70	60		

		192 WEST DATE JUNE 24, 1972			
STATION	TIME	RDG.	BASE DIAL CHANGE	CORR. RDG.	REMARKS
192W 10N		240	-70	170	
11		380	-70	310	
12		510	-70	440	
13		320	-70	250	
14		300	-70	230	
15N	4:13	290	-70	220	
16		280	-65	215	
17		280	-65	215	
18		310	-65	245	
19		260	-65	195	
20N		250	-65	185	
21		240	-65	175	
22		320	-65	255	
23		230	-65	165	
192W 24 N		180	-65	115	
B.S.					
192W 25 N	4:21	240	-65	175	
B.S.					
196W 25 N	4:24	190	-65	125	
B.S.					
192W 25 N	4:26	240	-65	175	
192W 26 N		480	-65	415	
17		190	-65	125	
192W 28 N		210	-65	145	

LINE:		192 WEST			
DATE:		JUNE 24, 1972			
STATION	TIME	RDG.	BASE DIURNAL CHANGE	CORR. RDG.	REMARKS
192W 29N		420	-65	355	
30N	4:31	610	-70	540	
31		80	-70	10	
32		130	-70	60	
		600	-70	530	
33		1225	-70	1205	
		1225	-70	1155	
34		40	-70	30	
		170	-75	95	
35N		270	-75	195	
36		-70	-75	-145	
		120	-75	-195	
37		230	-75	155	
		280	-75	205	
38		290	-75	215	
39		270	-75	195	
40N	4:40	280	-80	200	
41		320	-80	240	
42		340	-80	260	
43		380	-80	300	
44		380	-80	300	
45N		500	-85	415	
46		560	-85	475	
47		610	-85	525	
48		610	-85	525	
49		600	-85	515	
50N	4:47	560	-90	470	
192W 51N		490	-90	400	

LINE		192 WEST			
DATE		JUNE 24, 1972			
STATION	TIME	RDG.	BASE DIURNAL CHANGE	CORR. RDG.	REMARKS
192W 52N		490	-90	400	
53		500	-90	410	
54		510	-90	420	
55N		470	-90	380	
56		440	-95	345	
57		360	-95	265	
58		440	-95	345	
59		440	-95	345	
60N	4:55	440	-95	345	
61		430	-100	330	
62		350	-100	250	
63		370	-100	270	
64		360	-100	260	
65N		310	-100	210	
66		370	-105	265	
67		320	-105	215	
68		280	-105	175	
69		380	-105	275	
70N	5:04	370	-105	265	
71		450	-110	340	
72		450	-110	340	
73		250	-110	240	
192W 74N		340	-110	230	

BASE STATION

BASE	LINE	TIE	LINE
244	245	244	
240	285	240	
236	295	236	
232	295	232	
228	265	228	160
224	225	224	185
220	200	220	165
216	200	216	145
212	35	212	135
208	85	208	145
204	565	204	125
200	-50	200	120
196	125	196	135
192	175	192	135
188	100	188	150
184	65	184	160
180	175	180	160
176	230	176	150
172	90	172	130

Xuu2

PACIFIC
WATERPROOF

LEVEL

NOTEBOOK No. 311

MAGNETOMETER

NOTES

MT. MYE

1972 • 2

ZONE: 188 WEST
 DATE: JUNE 25, 1972

ZONE: 188 WEST
 DATE: JUNE 25, 1972

STATION	TIME	RDG.	CORR.	CORR. RDG.	REMARKS	STATION	TIME	RDG.	CORR.	CORR. RDG.	REMARKS
B.S. 220W 72N	9:10	200	0	200		188W, 66N		240	-35	205	
B.S. 220W 72N	9:23	180	+20	200		65N		340	-35	305	
B.S. 80N 212W	9:28	160	-25	135		64		350	-35	315	
B.S. 80N 204W	9:33	150	-15	145		63		340	-30	310	
B.S. 80N 200W	9:36	160	-40	120		62		320	-30	290	
B.S. 80N 196W	9:39	160	-25	135		61		270	-30	240	
B.S. 80N 192W	9:41	170	-35	135		60N	16:01	300	-30	270	
B.S. 80N 188W	9:44	195	-45	150		59		300	-30	270	
						58		330	-30	300	
188W 80N	9:47	200	-45	155		57		430	-25	405	
79		240	-45	195		56		510	-25	485	
78		230	-45	185		55N		500	-25	475	
77		250	-45	205		54		520	-25	495	
76		260	-45	215		53		510	-25	485	
75N		300	-40	260		52		420	-20	400	
74		300	-40	260		51		420	-20	400	
73		370	-40	330		50N	10:08	480	-20	460	
72		360	-40	260		49		470	-20	450	
71		250	-40	210		48		400	-20	380	
70N	9:55	250	-40	210		47		280	-15	265	
69		230	-35	195		46		260	-15	245	
68		250	-35	215		45N		270	-15	255	
188W 67N		320	-35	285		188W 44N		260	-15	245	

LINE: 188 WEST
DATE: JUNE 25, 1972

LINE: 184 WEST
DATE: JUNE 25, 1972

STATION	TIME	RDG.	CORR.	CORR RDG.	REMARKS	STATION	TIME	RDG.	CORR	CORR RDG.	REMARKS
188W 43N		230	-15	215		184W 25N	10:41	60	+5	65	
42		210	-15	195							
41		210	-10	200		184 26N		280	+5	285	
40N	10:14	260	-10	250				460	+5	465	
39		480	-10	470		27		560	+5	565	
38		150	-10	140				600	0	600	
37		140	-10	130		28		880	0	880	
36		140	-10	130				880	0	880	
35N		110	-5	105		29		1075	0	1075	
34		80	-5	75				920	-5	925	
33		-40	-5	-45		30N	10:47	780	-5	775	
32		-50	-5	-55				420	-5	415	
31		466	-5	55		31		360	-5	345	
30N	10:22	540	-5	535		32		220	-5	215	
29		950	0	950		33		260	-10	250	
		1000	0	1000		34		260	-10	250	
28		960	0	960		35N		150	-10	140	
		930	0	930		36		130	-15	115	
27		740	0	740		37		170	-15	155	
26		860	0	860		38		190	-15	175	
		400	0	400		39		270	-20	250	
B.S.						40N	10:53	180	-20	160	
188W 25N	10:27	100	0	100		41		160	-20	140	
B.S.						42		160	-25	135	
184W 25N	10:30	70	-5	65		43		190	-25	165	
B.S.						44		200	-25	175	
188W 25N						45N		220	-30	190	
						184W 46N		210	-30	180	

no lines
south of BL

LINE : 184 WEST
 DATE : JUNE 25, 1972

LINE : 184 WEST
 DATE : JUNE 25, 1972

STATION	TIME	RDG.	CORR.	CORR. RDG.	REMARKS	STATION	TIME	RDG.	CORR.	CORR. RDG.	REMARKS
184W 47N		200	-30	170		184W 70N	11:18	240	-70	170	
48		220	-35	185		71		240	-75	165	
49		190	-35	155		72		210	-75	135	
50N	10:59	200	-35	165		73		330	-75	255	
51		280	-40	240		74		440	-80	360	
52		400	-40	360		75N		510	-80	430	
53		480	-45	435		76		320	-80	240	
54		480	-45	435		77		300	-85	215	
55N		480	-45	435		78		270	-85	185	
56		515	-50	465		79		280	-85	195	
57		520	-50	470		80N		240	-85	155	
58		460	-50	410							
59		440	-55	385		80N 184W	11:26	240	-80	160	
60N	11:08	320	-55	265		80N 188W	11:23	240	-90	150	
61		230	-55	175							
62		230	-60	170							
63		850	-60	790							
64		450	-60	390							
65N		340	-60	280							
		270	-65	205							
		250	-65	185							
66		260	-65	195							
67		280	-65	215							
68		330	-70	260							
184W 69N		320	-70	250							

lunch

LINE: 196 WEST
 DATE: JUNE 25, 1972

LINE: 196 WEST
 DATE: JUNE 25, 1972

STATION	TIME	RDG.	CORR.	CORP. RDG.	REMARKS	STATION	TIME	RDG.	CORR.	CORP. RDG.	REMARKS
B.S.						196W 98A		280	-85	195	
BON 188W	11:52	250	-100	150		99		190	-85	105	
B.S.						100N	12:20	180	-85	95	
BON 192W	11:55	220	-85	135		101		210	-85	125	
B.S.						102		240	-85	155	
BON 196W	11:59	225	-90	135		103		270	-85	185	
196W BON	12:01	220	-90	130		104		130	-85	45	
B1		210	-90	120		105		146	-85	55	
B2		210	-90	120		106		220	-85	135	
B3		190	-90	100		107		170	-85	85	
B4		190	-90	100		108		200	-85	115	
B5N		180	-90	90		109		220	-85	635	
B6		180	-90	90		110N	12:29	80 150	-85 -85	-5 65	
B7		190	-90	100		111		190	-85	105	
B8		190	-90	100		112		250	-80	170	
B9		200	-90	110		113		180	-80	100	
90N	12:10	180	-90	90		114		210	-80	130	
91		190	-90	100		115N		180	-80	100	
92		200	-90	110		116		210	-80	130	
93		160	-90	70		117		200	-80	120	
94		160	-90	70		118		220	-80	140	
95N		220	-90	130		119		240	-80	160	
96		200	-85	115		196W 120N	12:38	100	-80	20	
196W 97N		210	-85	125							

50089

LINE: 196 & 192 WEST DATE: JUNE 25, 1972					LINE: 192 WEST DATE: JUNE 25, 1972						
STATION	TIME	RDG.	CORR.	CORR. RDG.	REMARKS	STATION	TIME	RDG.	CORR.	CORP. RDG.	REMARKS
196W 121N		140	-80	160		192W 110N	1:09 12:09	120	-70	50	
122		120	-80	140		109		160	-70	90	
123		90	-80	10		108		190	-70	120	
124		100	-80	20		107		150	-70	80	
196W 125N	12:43	100	-80	120		106		140	-70	70	
						105N		150	-70	80	
						104		140	-70	70	
						103		160	-70	90	
192W 125N	12:48	-30	-75	-105	there's	102		240	-70	170	
124		220	-75	145	no sta.	101		160	-70	90	
123		170	-75	95	107 on	100N	1:18	180	-65	115	
122		130	-75	55	this line	99		140	-65	75	
121		100	-75	25	1st rdg. taken	98		130	-65	65	
120N	12:52	90	-75	15	100' point their sta. 125N	97		150	-65	85	
119		90	-75	15		96		150	-65	85	
118		170	-75	95		95N		150	-65	85	
117		130	-75	55		94		140	-65	75	
116		150	-75	75		93		90	-65	25	
115N		160	-70	90		92		210	-65	145	
114		140	-70	70		91		110	-65	45	
113		150	-70	80		90 N	1:27	130	-65	65	
112		150	-70	80		89		150	-65	85	
192W 111 N		160	-70	90		192W 88 N		160	-65	95	

LINE: 192 WEST
DATE: JUNE 25, 1972

LINE: 220 WEST
DATE: JUNE 25, 1972

STATION	TIME	RDG	CORR.	CORR. RDG	REMARKS	STATION	TIME	RDG	CORR.	CORR. RDG	REMARKS
192W 87N		140	-65	75		B.S.					
86		160	-65	95		BON 204W	2:02	190	-65	125	
85N		170	-65	105		B.S.					
84		170	-65	105		BON 208W	2:04	210	-65	145	
83		170	-65	105		B.S.					
82		170	-65	105		BON 212N	2:06	190	-55	135	
81		180	-65	115		B.S.					
192W 80N	1:34	180	-65	115		BON 216N	2:09	190	-45	145	
B.S.						B.S.					
BON 192W	1:35	180	-45	135		BON 220N	2:11	220	-55	165	
B.S.						79		200	-50	150	
BON 196W	1:38	200	-65	135		78		220	-45	175	
BON 200W	1:40	180	-60	120		B.S. 77		200	-45	155	
BON 204W	1:43	190	-65	125		220N 76N	2:14	190	-45	145	
						75		210	-40	170	
						74		200	-30	170	
						73		220	-25	195	
						B.S.					
						220W 72N	2:17	220	-20	200	
						71		240	-20	220	
						70		250	-15	235	
						69		240	-10	230	
						B.S.					
						220W 68N	2:20	290	-10	280	
						67		280	-10	270	
						66		290	-5	285	
						65		260	-5	255	
						B.S.					
						220W 64N	2:23	260	-5	255	
						63		370	-5	365	

LINE:		220 WEST			LINE:		220 WEST				
DATE:		JUNE 25, 1972			DATE:		JUNE 25, 1972				
STATION	TIME	RDG.	CORR.	CORR. RDG.	REMARKS	STATION	TIME	RDG.	CORR.	CORR. RDG.	REMARKS
62		280	-10	270		39		290	-30	260	
61		300	-15	285		38		320	-25	295	
B.S. 220W 60 N	2:26	330	-15	315		37		320	-20	300	
59		380	-15	365		B.S. 220W 36 N	2:44	290	-15	275	
58		390	-15	375		35		290	-20	270	
57		500	-20	480		34		260	-25	235	
B.S. 220W 56 N	2:29	380	-20	360		33		250	-30	220	
55		320	-20	300		B.S. 220W 32 N	2:48	270	-40	230	
54		270	-20	250		31		220	-35	185	
53		260	-10	250		30		180	-30	150	
B.S. 220W 52 N	2:32	300	-10	290		29		200	-25	175	
51		360	-10	350		B.S. 220W 28 N	2:51	200	-15	185	
50		260	-10	250		" 27		180	-10	170	
49		260	-10	250		26		190	-5	185	
B.S. 220W 48	2:35	280	-10	270		B.S. 220W 25 N	2:54	200	0	200	
47		290	-10	280		B.S. 216W 25 N	3:02	200	0	200	
46		290	-5	285		B.S. 220W 25 N	3:05	200	0	200	
45		280	0	280							
B.S. 220W 44 N	2:37	280	0	280		220W 24 N		220	0	220	
43		250	-10	240		23		200	0	200	
42		240	-20	220		22		210	0	210	
41		290	-30	260		21		230	0	230	
B.S. 220W 40 N	2:40	280	-35	245		220W 20 N		280	-5	275	

LINE:		220 & 216 WEST			LINE:		216 WEST				
DATE:		JUNE 25, 1972			DATE:		JUNE 25, 1972				
STATION	TIME	RDG.	CORR.	CORP. RDG.	REMARKS	STATION	TIME	RDG.	CORR.	CORP. RDG.	REMARKS
220W 19N		270	-5	265		216W 10N		220	-35	185	
18		260	-5	255		11		200	-35	165	
17		280	-5	275		12		190	-35	155	
16		300	-10	290		13		220	-40	180	
15N	3:13	300	-10	290		14		180	-40	140	
14		280	-10	270		15N	3:34	200	-40	160	
13		250	-10	240		16		210	-40	170	
12		260	-15	245		17		270	-45	225	
11		260	-15	245		18		280	-45	235	
10N		260	-15	245		19		180	-45	135	
9		250	-15	235		20W		140	-45	95	
8		250	-20	230		21		130	-50	80	
7		240	-20	220		22		130	-50	80	
6		230	-20	210		23		260	-50	210	
220W 5N	3:21	220	-20	200		24		280	-50	230	
						13.5					
						216W 25N	3:42	250	-50	200	
						30					
						220W 25N	3:44	260	-60	200	
						0.5					
						216W 25N	3:47	250	-50	200	
216W 5N	3:26	180	-30	150							
6		200	-30	170		216W 26N		260	-50	210	
7		220	-30	190		27		130	-50	80	
8		220	-30	190		28		80	-50	30	
216W 9N		240	-35	205		216W 29N		240	-50	190	

LINE:		216 WEST			LINE:		216 WEST				
DATE:		JUNE 25, 1972			DATE:		JUNE 25, 1972				
STATION	TIME	RDG.	CORR.	CORR. RDG.	REMARKS	STATION	TIME	RDG.	CORR.	CORR. RDG.	REMARKS
216W 30N	3:53	260	-50	310		216W 53N		410	-70	340	
31		380	-55	325		54		320	-70	250	
32		320	-55	265		55		300	-70	230	
33		480	-55	425		56		270	-70	200	
34		530	-55	475		57		260	-70	190	
35N		540	-55	485		58		250	-70	180	
36		470	-55	415		59		280	-70	210	
37		420	-55	365		60N	4:18	320	-75	245	
38		340	-55	285		61		340	-75	265	
39		320	-60	260		62		300	-75	225	
40N	4:01	240	-60	180		63		270	-75	195	
41		235	-60	175		64		220	-75	145	two
42		210	-60	150		65 N		250	-75	175	sta 64N
43		240	-60	180		66		230	-75	155	
44		250	-60	190		67		250	-80	170	↓
45		250	-60	190		68		230	-80	150	but
46		280	-65	215		69		260	-80	180	no sta.
47		290	-65	225	streams → SSE	70 N	4:30	210	-80	130	77N
48		310	-65	245	47-80N	71		230	-80	150	
49		350	-65	285		72		260	-80	180	
50N	4:10	300	-65	235		73		290	-80	205	
51		340	-65	275		74		260	-85	175	
216W 52N		410	-65	345	streams SAS-N. 52+40N	216W 75N		230	-85	145	

STATION	LINE WEST			CORR. RDG.	REMARKS	LINE DATE				
	DATE:	RDG.	CORR.			STATION	TIME	RDG.	CORR	CORR RDG.
216W 76N		220	-85	135						
77		220	-85	135	no sta. 77N					
78		230	-85	145						
79		220	-85	135						
216W 80N	4:39	220	-85	135						
B.S. 80N 216W	4:40	230	-85	145						
B.S. 80N 220W	4:42	250	-85	165						
B.S. 220W 78N	4:45	250	-50	200						

STATION	LINE	TIE	CORR.	CORR	REMARKS	STATION	LINE	TIE	CORR	CORR.	REMARKS
	DATE	LINE					DATE	RDG.			
		JULY 3, 1972						JULY 3, 1972			
220W 72N	8:42	225	-25	200				270	-35	235	
220W 76N	8:45	155	-10	145				260	-35	225	
BON 220W	8:48	180	-15	165				250	-40	210	
BON 224W	8:51	200	-25	165		BON 232W	9:25	240	-40	200	
								230	-40	190	
BON 228W	8:53	180	-20	160				350	-40	310	
BON 232W	8:55	220	-20	200				220	-40	180	
BON 228W	8:57	180	-20	160		BON 228W	9:27	200	-40	160	
BON 232W	8:58	220	-20	200				200	-35	165	
BON 236W	9:00	240	-20	220				220	-30	190	
BON 232W	9:02	220	-20	200				220	-30	190	
BON 236W	9:03	240	-20	220		BON 224W	9:29	210	-25	185	
BON 240W	9:05	250	-25	225				200	-25	175	
BON 236W	9:07	250	-30	220				190	-30	160	
BON 240W	9:09	260	-35	225				200	-35	165	
						BON 220W	9:32	200	-35	165	
						BON 216W	9:34	180	-35	145	
BON 240W	9:19	280	-55	225							
		520	-50	470		216W	BON	9:35	180	-35	145
		270	-45	225			81	185	-35	150	
		260	-40	220			82	180	-35	145	
80 236W	9:22	255	-35	220		216W	B3N	190	-35	155	

LINE:		216 WEST				LINE:		220 WEST			
DATE:		JULY 3, 1972				DATE:		JULY 3, 1972			
STATION	TIME	RDG	CORR	CORR. RDG.	REMARKS	STATION	TIME	RDG	CORR.	CORR. RDG.	REMARKS
216W 84N		200	-35	165		220W 100N	10:00	200	-60	140	
85 N		200	-35	165		99		230	-60	170	
86		200	-40	160		98		240	-60	180	
87		225	-40	185		97		240	-60	180	
88		245	-40	205		96		240	-60	180	
89		240	-40	200		95		230	-65	165	
90 N	9:42	250	-40	210		94		230	-65	165	
91		240	-40	200		93		230	-65	165	
92		240	-45	195		92		240	-65	175	
93		230	-45	215		91		245	-65	180	
94		215	-45	170		90N	10:07	250	-65	185	
95N		215	-45	170		89		260	-65	195	
96		240	-45	195		88		270	-65	205	
97		230	-45	185		87		255	-70	185	
98		150	-50	100	top of small bit	86		250	-70	180	
99		300	-50	250		85 N		240	-70	170	
100 N	9:50	240	-50	190		84		240	-70	170	
101		230	-50	180		83		225	-70	155	
102		250	-50	200		82		220	-70	150	
103		130	-50	80		81		220	-70	150	
104		200	-55	145		80N		230	-70	160	
216W 105N	9:54	210	-55	165							
						B.S. 80N 220W	10:13	230	-70	160	

STATION	TIME	224 WEST		CORR RDG.	REMARKS
		RDG.	CORR.		
B.S.					
BON 224W	10:15	260	-75	185	
224W BON	10:16	250	-75	175	
B1		235	-75	160	
B2		230	-75	155	
B3		240	-75	165	
B4		260	-75	185	
B5N		230	-75	155	
B6		220	-75	145	
B7		230	-75	155	
B8		240	-75	165	
B9		240	-75	165	
90N	10:23	240	-75	165	
91N		230	-75	155	
92		240	-75	165	
93		250	-75	175	
94		230	-75	155	
224W 95N	10:25	230	-75	155	
228W 90N	10:28	250	-75	175	
B9		240	-75	185	
B8		255	-75	180	
228W 87N		250	-75	175	

STATION	TIME	228 WEST		CORR. RDG.	REMARKS
		RDG.	CORR.		
228W 86N		270	-75	195	
B5		255	-75	180	
B4		255	-75	180	
B3		250	-75	175	
B2		260	-75	185	
B1		250	-75	175	
228W BON		245	-75	170	
B.S. BON 228W	10:36	235	-75	160	
B.S. BON 224W	10:38	260	-75	185	
B.S. BON 228W	10:40	235	-75	160	
228W BON		250	-75	175	
79		310	-75	235	
78		250	-75	175	
77					
76		255	-75	180	
75N		260	-70	190	
74		260	-70	190	
73		250	-70	180	
72		250	-65	185	
71		250	-65	185	
70N	10:46	260	-65	195	
69		260	-60	200	

STATION	LINE: DATE:	228 JULY 3, 1972	WEST CORR.	RDG.	REMARKS
53					
228W 25N	11:22	260	+5	265	
24		260	+5	265	
23		220	+5	225	
22		350	+5	355	
21		260	+5	265	
20N		275	+5	280	
19		390	+5	395	
18		410	+5	415	
17		420	+5	425	
16		390	+5	395	
15N	11:28	370	+5	375	
14		380	0	380	
13		390	0	390	
12		400	0	400	
11		430	0	430	
10N		450	0	450	
9		430	0	430	
8		435	0	435	
7		430	0	430	
6		400	0	400	
228W 5N	11:34	460	0	460	

STATION	LINE: DATE:	224 JULY 3, 1972	WEST CORR.	RDG.	REMARKS
224W 5N	11:36	320	-5	365	
6		340	-5	335	
7		390	-5	385	
8		400	-10	390	
9		400	-10	390	
10 N		400	-10	390	
11		400	-10	390	
12		370	-10	360	
13		340	-10	330	
14		320	-10	310	
15 N	11:42	360	-10	350	
16		340	-10	330	
17		340	-15	325	
18		330	-15	315	
19		240	-15	225	
20 N		240	-15	225	
21		220	-15	205	
22		270	-15	255	
23		270	-15	255	
24		200	-15	185	
85					
224W 25N	11:50	225	0	225	
85					
228W 25N	11:52	280	-15	265	

LINE: 224 WEST DATE: JULY 3, 1972					LINE: 224 WEST DATE: JULY 3, 1972						
STATION	TIME	RDG.	CORR.	CORR. RDG.	REMARKS	STATION	TIME	RDG.	CORR.	CORR. RDG.	REMARKS
B.S.											
224W 25N	11:55	230	-5	225		224W 47N		300	-30	270	
						48		300	-30	270	
26		260	-15	245		49		330	-30	300	
27		230	-15	215		50N	12:13	320	-35	285	
28		240	-15	225		51		300	-35	265	
29		250	-15	235		52		315	-35	280	
30N		230	-15	215		53		355	-35	320	
31		230	-15	215		54		355	-35	320	
32		250	-20	230		55N		380	-35	345	
33		240	-20	220		56		410	-40	370	
34		240	-20	220		57		400	-40	360	
35N	12:01	250	-20	230		58		360	-40	320	
36		270	-20	250		59		340	-40	300	
37		280	-20	260		60N	12:20	315	-40	275	
38		270	-25	245		61		320	-40	280	
39	12:05	275	-25	250		62		370	-45	325	
40N		280	-25	255		63		420	-45	385	
41		300	-25	275		64		330	-45	285	
42		290	-25	265		65N		315	-45	270	
43		300	-25	275		66		355	-45	310	
44		330	-30	300		67		260	-45	215	
45N		280	-30	250		68		260	-45	215	
224W 46N		280	-30	250		224W 69N		265	-50	215	

STATION	LINE	224 WEST		CORR PSS	REMARKS
	DATE	RDG.	CORR.		
		JULY 3, 1972			
224070N	12:28	265	-50	215	
71	12:36	240	-60	180	
72		230	-60	170	
73		230	-60	170	
74		240	-60	180	
75		240	-60	180	
76		240	-65	175	
77		230	-65	165	
78		200	-65	135	
79		300	-65	235	
224W 80N		230	-65	165	
B.S. 80N 224W	12:44	240	-65	185	
B.S. 80N 228W	12:46	230	-70	160	

LOW CL

STATION	LINE	232 WEST		CORR RDG	REMARKS
	DATE	RDG.	CORR.		
		JULY 3, 1972			
B.S. 80N 228W	1:23	240	-80	160	
B.S. 80N 232W	1:26	270	-70	200	
B.S. 80N 236W					
232W 80N	1:28	240	-70	170	
79		260	-70	190	
78		260	-65	195	
77		270	-65	205	
76		260	-65	195	
75		270	-65	205	
74		260	-65	195	
73		240	-60	180	
72		250	-60	190	
71		250	-60	190	
70N	1:33	250	-60	190	
67		245	-60	185	
68		240	-55	185	
67		245	-55	190	
66		230	-55	195	
65N		260	-55	205	
64		260	-55	205	
232W 63N		270	-50	+220	

STATION	232 WEST		CORR. RDG.	REMARKS
	LONG. DATE:	JULY 3, 1972		
	TIME	RDG.	CORR.	
232W 62N		370	-50	320
61N		345	-50	295
60N	1:37	480	-50	430
59		320	-50	270
58		300	-45	255
57		310	-45	265
56		315	-45	270
55N		310	-45	265
54		310	-40	270
53		310	-40	270
52		300	-40	260
51		280	-40	240
50N	1:46	290	-35	255
49		290	-35	255
48		270	-35	235
47		270	-35	235
46		285	-30	255
45N		300	-30	270
44		280	-30	250
43		280	-30	250
42		270	-25	245
41		240	-25	215
232W 46N	1:53	250	-25	225

STATION	232 WEST		CORR. RDG.	REMARKS
	LONG. DATE:	JULY 3, 1972		
	TIME	RDG.	CORR.	
232W 39N		250	-25	225
38		260	-20	240
37		260	-20	240
36		240	-20	220
35N		340	-20	320
34		360	-15	345
33		310	-15	295
32		280	-15	265
31		270	-10	260
30N	1:59	260	-10	250
29		235	-10	225
28		240	-5	235
27		260	-5	255
232W 26		280	-5	275
B.S.				
232W 25N	2:03	300	-5	295
B.S.				
232W 25N	2:05	300	-5	295
B.S.				
232W 25N	2:07	300	-5	295
232W 24N		280	-5	275
23		280	-5	275
22		290	-5	285
232W 21N		280	-5	275

STATION	LINE :		WEST		CORP. RDG.	REMARKS
	TIME	RDG.	CORR.	RDG.		
232W 20N		270	-5	265		
19		-30	-5	-35		
18		350	-5	345		
17		380	-5	375		
16		340	-5	335		
15 N	2:14	360	-5	355		
14		340	-5	335		
13		340	-5	335		
12		340	-5	335		
11		375	-5	370		
10 N		360	-10	350		
9		360	-10	350		
8		370	-10	360		
7		400	-10	390		
6		450	-10	440		
232W 5N	2:20	450	-10	440		
236W 5N	2:23	480	-10	470		
6		470	-10	460		
7		380	-10	370		
8		345	-10	335		
236W 9N		370	-10	360		

There is
no 13th on
this
first sta.
near
past their
5th sta.

STATION	LINE :		WEST		CORP. RDG.	REMARKS
	TIME	RDG.	CORR.	RDG.		
236W 10 N		380	-10	370		
11		355	-15	340		
12		340	-15	325		
13		340	-15	325		
14		300	-15	285		
15 N	2:32	350	-15	335		
16		320	-15	305		
17		330	-15	315		
18		300	-15	285		
19		300	-15	285		
20 N		280	-15	265		
21		270	-15	255		
22		280	-15	265		
23		280	-15	265		
24		280	-15	265		
B.S.						
236W 25 N	2:39	310	-15	295		
26		300	-15	285		
27		300	-15	285		
28		290	-15	275		
29		280	-20	260		
236W 30 N		280	-20	260		

STATION	LINE: DATE:	RDG.	CORR	CORR RDG.	REMARKS
	236 WEST JULY 3, 1972				
236W 31 N		270	-20	270	
32		280	-25	255	
33		320	-25	295	
34		320	-25	295	
35		330	-30	300	
36		260	-30	230	
37		250	-30	220	
38		270	-35	235	
39		280	-35	245	
40 N		270	-35	235	
41		270	-40	230	
42		270	-40	250	
43		300	-40	260	
44		330	-40	290	
45		320	-45	275	
46		320	-45	275	
47		300	-45	255	
48		280	-45	235	
49		260	-50	210	
50 N		280	-50	230	
51		280	-50	230	
52		280	-50	230	
236W 53 N		300	-55	245	

STATION	LINE: DATE:	RDG.	CORR	CORR RDG.	REMARKS
	236 WEST JULY 3, 1972				
236W 54 N		300	-55	245	
55 N		300	-55	245	
56		315	-55	260	
57		300	-60	240	
58		320	-60	260	
59		330	-60	270	
60 N	3:08	310	-60	250	
61		320	-65	255	
62		300	-65	235	
63		280	-65	215	
64		280	-65	215	
65 N		260	-70	190	
66		260	-70	190	
67		260	-70	190	
68		260	-70	190	
69		260	-75	185	
70 N	3:15	265	-75	190	
71		260	-75	185	
72		270	-80	190	
73		270	-80	190	
74		280	-80	200	
75 N		300	-85	215	
236W 76 N		310	-85	225	

		236 & 240 WEST			
LINE:		236 & 240 WEST			
DATE:		JULY 3, 1972			
STATION	TIME	RDG.	CORR.	CORR RDG.	REMARKS
236W 77N		300	-85	215	
78		300	-90	210	
79		285	-90	195	
236N 80N		285	-90	195	
B.S. 80N 236W	3:24	310	-90	220	
B.S. 80N 232W	3:26	280	-80	200	
B.S. 80N 232W	3:40	250	-50	200	
B.S. 80N 236W	3:42	280	-60	220	
B.S. 80N 240W	3:45	290	-65	225	
240W 80N		460	-60	400	
79		420	-60	360	
78		300	-60	240	
77		320	-60	260	
76		340	-60	280	
75N		320	-60	260	
74		330	-55	275	
73		320	-55	265	
240W 72N		300	-55	245	

		240 WEST			
LINE:		240 WEST			
DATE:		JULY 3, 1972			
STATION	TIME	RDG.	CORR.	CORR RDG.	REMARKS
240W 71N		290	-55	235	
70N		285	-55	230	
69	3:51	250	-55	195	
68		260	-50	210	
67		250	-50	200	
66		250	-50	200	
65N		240	-50	190	
64		250	-50	200	
63		260	-50	210	
62		270	-45	225	
61		260	-45	215	
240W 60N	3:58	250	-45	205	
59		260	-45	215	
58		240	-45	195	
57		240	-45	195	
56		240	-40	200	
55N		220	-40	180	
54		240	-40	200	
53		250	-40	210	
52		225	-40	185	
51		230	-35	195	
50N	4:05	230	-35	195	
240W 49N	4:06	250	-35	215	

STATION	TIME	LINE :	240	WEST	CORR. RDG.	REMARKS
		DATE :	JULY 3,	1972		
		RDG.		CORR.		
240W 48N		250	-35	215		
47		240	-35	205		
46		270	-30	240		
45N		300	-30	270		
44		380	-30	350		
43		350	-30	320		
42		280	-30	250		
41		270	-30	240		
240W 40N	4:12	265	-25	240		
39		250	-25	225		
38		280	-25	255		
37		280	-25	255		
36		290	-25	275		
35N		325	-25	300		
34		380	-20	360		
33		300	-20	280		
32		250	-20	230		
31		260	-20	240		
30N	4:19	280	-20	260		
29		270	-20	250		
28		260	-15	245		
27		280	-15	265		
240W 26N		280	-15	265		

STATION	TIME	LINE :	240	WEST	CORR. RDG.	REMARKS
		DATE :	JULY 3,	1972		
		RDG.		CORR.		
B.S.						
240W 25N	4:24	285	0	285		
B.S.						
244W 25N	4:26	260	-15	245		
B.S.						
240W 25N	4:28	290	-5	285		
240W 24		280	-15	265		
23		280	-15	265		
22		280	-15	265		
21		260	-15	245		
20N		260	-15	245		
19		275	-15	260		
18		270	-15	255		
17		300	-15	285		
16		280	-15	265		
15N	4:35	290	-20	270		
14		330	-20	310		
13		320	-20	300		
12		340	-20	320		
11		340	-20	320		
10N		340	-20	320		
9		360	-20	340		
8		360	-20	340		
7		350	-20	330		
240W 6-N		350	-25	325		

STATION	LONGE : DATE :	244 JULY 3, 1972	WEST	RDG	CORR. RDG.	REMARKS
240W 5N	4:43	360	-25	335		
244W 5N	4:45	410	-25	385		
6		420	-25	395		
7		400	-25	375		
8		400	-25	375		
9		325	-30	295		
10 N		340	-30	310		
11		330	-30	300		
12		330	-30	300		
13		360	-30	330		
14		380	-30	350		
15 N	4:53	330	-30	300		
16		280	-30	250		
17		260	-35	225		
18		250	-35	215		
19		270	-35	235		
20 N		270	-35	235		
21		300	-35	265		
22		300	-35	265		
23		300	-35	265		
244W 24 N		290	-35	255		

STATION	LONGE : DATE :	244 JULY 3, 1972	WEST	RDG	CORR. RDG.	REMARKS
85 244W 25 N	5:02	280	-35	245		
26		280	-35	245		
27		280	-35	245		
28		270	-35	235		
29		280	-35	245		
30 N	5:05	300	-40	260		
31		300	-40	260		
32		300	-40	260		
33		290	-40	250		
34		290	-40	250		
35 N		250	-45	205		
36		360	-45	215		
37		280	-45	235		
38		290	-45	245		
39		290	-45	245		
40 N	5:12	300	-45	255		
41		280	-50	230		
42		320	-50	270		
43		400	-50	350		
44		450	-50	400		
45		400	-50	350		
46		310	-55	255		
244W 47 N		300	-55	245		
48		210	-55	155		
49		230	-55	175		
50 N	5:20	230	-55	175		

B.S.				
Bow 240W	5:36	350	-125	225
Bow 236W	5:38	300	-80	220
Bow 232W	5:40	285	-85	200
Bow 228W	5:43	285	-75	160
220W TAN	5:49	240	-40	200
BASE LINE				TIE LINE

244	245		244	
240	285		240	225
236	295		236	220
232	295		232	200
228	265		228	160
224	225		224	185
220	200		220	165
216	200		216	145
212	35		212	135
208	85		208	145
204	565		204	125
200	-50		200	120
196	125		196	135
192	175		192	135
188	100		188	150
184	65		184	160
180	175		180	160
176	230		176	150
172	90		172	130

D LONDRY

Keep in the Rain
WEATHERPROOF



TRANSIT

NOTEBOOK NO. 301

MAG NOTES

Zan Jet Tim
Claims

CENTRAL F
WESTERN
GRAVITY
ANOMALY

STATION	TIME	RDG.	BASE CORR	DIURNAL CORR	TEMP CORR	REMARKS
B.L. ON 84E	9:48	820	0		820	820
84	9:56	820	0	0	820	
80	10:58	830	0	0	830	830
84	10:00	820	0	0	830	
80	10:02	830	0	0	830	
76	10:04	810	0	0	810	810
80	10:06	830	0	0	830	
76	10:09	810	0	0	810	
72	10:12	810	0	0	810	810
76	10:14	810	0	0	810	
72	10:16	810	0	0	810	
68	10:18	780	-5	0	775	775
72	10:21	820	-5	-5	810	
68	10:23	790	-15	0	775	
64	10:25	830	-20	0	810	800
68	10:28	800	-15	-5	775	
64	10:30	820	-20	0	790	
60	10:32	840	-20	0	820	820
64	10:34	820	-20	0	800	
60	10:36	840	-20	0	820	

LINE	60 EAST				
STATION	TIME	RDG.	BASE DUREAN CORR	CORR EDG	REMARKS
0-00	10:42	830	-10 0	820	
1		790	-10 0	780	
2		810	-10 0	800	
3		790	-10 0	780	
4		790	-10 0	780	
5 N		775	-10 0	765	
6		800	-10 0	790	
7		790	-10 0	780	
8		790	-10 0	780	
9		780	-10 0	770	
10 N		780	-10 0	770	
11		770	-10 0	760	
12		750	-10 0	740	
13		730	-10 0	720	
14		740	-10 0	730	
15 N		720	-10 0	710	
16		730	-10 0	720	
17		740	-10 0	730	
18		740	-10 +5	735	
19		730	-10 +5	725	
20 N		710	-10 +5	705	
21		690	-10 +5	685	
L60E 22N		670	-10 +5	665	

STATION	TIME	RDG	BASE CORR	DIURNAL CORR	CORR RDG	REMARKS
L60E 23N		660	-10	+5	655	
24		630	-10	+5	625	
25N	11:00	630	-10	+5	625	
L64E 25N	11:02	640	-10	+5	635	
24		640	-10	+5	635	
23		660	-10	+5	655	
22		690	-10	+5	685	
21		700	-10	+5	695	
20N		710	-10	+5	705	
29		720	-10	+5	715	
18		725	-10	+5	720	
17		710	-10	+5	705	
16		735	-10	+10	735	
15N		720	-10	+10	720	
14		730	-10	+10	730	
13		730	-10	+10	730	
12		730	-10	+10	730	
11		730	-10	+10	730	
10N		740	-10	+10	740	
9		750	-10	+10	750	
L64E 8N		760	-10	+10	760	

STATION	TIME	RDC	BASE CORR	DIVIDUAL	CORR RDG	REMARKS
L64E 7N		750	-10	+10	750	
6		760	-10	+10	760	
5		760	-10	+10	760	
4		760	-10	+10	760	
3		760	-10	+10	760	
2		800	-10	+10	800	
1		780	-10	+10	780	
B.L. ON 64E	11:22	800	-10	+10	800	
B.L. ON 60E	11:24	820	-10	+10	820	
B.L. ON 68E	11:28	780	-5	0	775	
L68E 1 N		760	-5	0	755	
2		760	-5	0	755	
3		770	-5	0	765	
4		770	-5	-5	760	
5 W		760	-5	-5	750	
6		760	-5	-5	750	
7		750	-5	-10	735	
8		750	-5	-10	735	
9		750	-5	-10	735	
L68E 10 N		760	-5	-15	740	

cut road cut 5 + 05N

STATION	TIME	RDG.	BASE CORR	DIVERGAL	CORR RDG.	REMARKS
68W 11N		780	-5	-15	760	
12		800	-5	-15	780	
13		800	-5	-20	775	
14		790	-5	-20	765	
15		800	-5	-20	775	
16		790	-5	-25	760	
17		780	-5	-25	750	
18		780	-5	-25	750	
19		780	-5	-30	745	
20		770	-5	-30	735	
21		760	-5	-30	725	
22		730	-5	-35	690	
23		700	-5	-35	660	
24		680	-5	-35	640	
68W 25N	11:52	660	-5	-40	615	
72W 25N	11:57	640	-5	-45	590	
24		660	-5	-45	610	
23		690	-5	-45	640	
22		730	-5	-50	675	
21		780	-5	-50	725	
20N		800	-5	-50	745	
72W 19N		825	-5	-55	770	

stream at 73W on T.L.
Reading S.S.W.

STATION	TIME	RDS	BASE CORR.	DIVISION	CORR RDS.	REMARKS
L72W 18N		840	-5	-55	780	
17		840	-5	-55	780	
16		840	-5	-60	775	
15N		840	-5	-60	775	
14		830	-5	-60	765	
13		820	-5	-65	750	
12		840	-5	-65	770	
11		850	-5	-65	780	
10N		840	-5	-70	765	
9		840	-5	-70	765	
8		860	-5	-70	785	
7		880	-5	-75	800	
6		860	-5	-75	780	
5N		860	-5	-75	780	
4		870	-5	-80	785	
3		870	-5	-80	785	
2		875	-5	-85	785	
L72W 1N		895	-5	-85	805	
BL ON 72W	12:15	900	-5	-85	810	
BL ON 68W	12:18	880	-5	-100	775	
BL ON 76W	12:24	900	-5	-85	810	

cat read at 2010N

STATION	TIME	RDG.	BASE CORR	DIURNAL CORR	CORR RDG.	REMARKS
B.L. ON 76W	12:40	900	-90	0	810	
L76W IN		890	-90	0	800	
2		900	-90	0	810	
3		900	-90	0	810	
4		880	-90	0	790	
5 N		900	-90	0	810	
6		900	-90	0	810	
7		900	-90	0	810	
8		900	-90	0	810	
9		910	-90	0	820	
10 N		915	-90	0	825	
11		920	-90	0	830	
12		890	-90	0	800	
13		880	-90	0	790	
14		900	-90	0	810	
15 N		890	-90	0	800	
16		900	-90	0	810	
17		900	-90	0	810	
18		900	-90	0	810	
19		915	-90	-5	820	
20		860	-90	-5	765	
21		850	-90	-5	755	
L76W 22N		850	-90	-5	755	

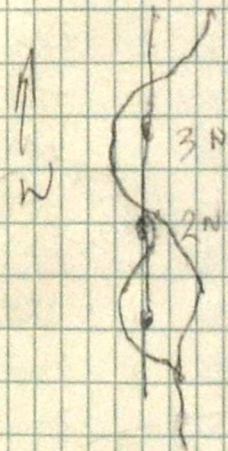
cut road at 1+60 N

stream at 18+45 N

STATION	TIME	RDG.	BASE CORR	DIURNAL CORR	CORR RDG.	REMARKS
L80W 6N		880	-90	-10	780	
5		910	-90	-10	810	
4		920	-90	-10	820	
3		890	-90	-10	790	
2		880	-90	-10	750	
L80W 1N		900	-90	-10	800	
B.L ON L80W	1:30	930	-90	-10	830	
B.L ON 76W	1:32	910	-90	-10	810	
B.L ON 80W	1:37	930	-90	-10	830	
B.L ON 84W	1:37	940	-90	-30	820	
B.L ON 84W	2:28	960	-140	0	820	
B.L ON 84W	2:33	960	-140	0	820	
88W	2:55	960	-140	0	820	815
84W	2:38	960	-140	0	820	
88W	2:40	950	-135	+0	810	
92W	2:42	980	-135	+0	850	845
88W	2:44	940	-135	+10	810	
92W	2:46	970	-135	0	840	
96W	2:48	920	-130	-5	890	785
92W	2:52	980	-130	-10	845	
96W	2:56	920	-130	-10	880	

stream at 3+30 N
→ E.W.

stream at 2+05 N
→ S.S.W.



STATION	TIME	RDG	BASE CORR	DIUR.	CORR RDG	REMARKS
96W	2:56	920	-140	0	880	
100W	2:59	900	-140	0	760	765
S. LN 96W	3:02	920	-140	+5	885	
B. LN 100W	3:05	900	-140	+10	870	
B. LN 100W	3:10	900	-135		765	
L 100W: 1N		890	-135	0	755	
2		900	-135	0	765	
3		915	-135	0	780	
4		900	-135	0	765	
5N		870	-135	0	735	
6		860	-135	0	725	
7		880	-135	0	745	
8		900	-135	0	765	
9		870	-135	0	735	
10N		940	-135	0	805	
11		990	-135	0	855	
12		860	-135	+5	730	
13		890	-135	+5	766	
14		840	-135	+5	710	
15N		870	-135	+5	740	
L 100W 16N		840	-135	+5	710	

STATION	TIME	RDG	BASE CORR	DIVR.	CORR RDG	REMARKS
L100W 17N		990	-135	+5	860	
18		840	-135	+5	710	
19		750	-135	+5	620	
20N		840	-135	+5	710	
21		800	-135	+5	670	
22		800	-135	+5	670	
23		760	-135	+10	635	
24		690	-135	+10	565	
L100W 25N	3:30	720	-135	+10	595	
L96W 25N	3:33	675	-135	+10	550	
24		600	-135	+10	475	
23		650	-135	+10	525	
22		680	-135	+15	560	
21		770	-135	+15	650	
20N		760	-135	+15	640	
19		780	-135	+15	660	
18		800	-135	+15	680	
17		760	-135	+15	640	
16		810	-135	+15	690	
15N		835	-135	+15	715	
14		835	-135	+15	715	
L96W 13N		920	-135	+15	800	

STATION	TIME	RDG	BASE CORR	DIVINAL	CORR RDG	REMARKS
L 96W 12N		970	-135	+15	850	
11		910	-135	+20	795	
10W		895	-135	+20	780	
9		900	-135	+20	785	
8		900	-135	+20	785	
7		880	-135	+20	765	
6		880	-135	+20	765	
5N		900	-135	+20	785	
4		900	-135	+20	785	
3		900	-135	+20	785	
2		920	-135	+20	805	
L 96W 1 N		910	-135	+20	795	
B.LON 96W	3:54	900	-135	+20	785	
B.LON 100W	3:56	880	-135	+20	765	
B.LON 92W	4:00	940	-135	+40	845	
B.LON 92W	4:05	940	-95	0	845	
L 92W 1N		930	-95	0	835	
2		900	-95	0	805	
3		900	-95	0	805	
L 92W 4N		900	-95	0	805	

STATION	TIME	RDG	BASE CORR	DIVISION	CORR RDG.	REMARKS
L92W 5N		900	-95	0	805	
6		890	-95	0	795	
7		876	-95	0	775	
8		860	-95	0	765	
9		880	-95	0	785	
10N		880	-95	0	785	
11		890	-95	0	795	
12		910	-95	0	815	
13		876	-95	0	775	
14		940	-95	0	845	
15N		930	-95	0	835	
16		830	-95	0	735	
17		690	-95	+0	595	
18		700	-95	+5	610	
19		830	-95	+5	740	
20N		940	-95	+5	850	
21		780	-95	+5	690	
22		660	-95	+5	570	
23		535	-95	+5	445	
24		625	-95	+5	535	
L92W 25N	4.26	570	-95	+5	480	

at road at 13+80N

STATION	TIME	RDG	BASE CORR DURING	CORR RDG	REMARKS
L88W 25N	4:29	640	-95 +5	550	
24		720	-95 +5	630	
23		785	-95 +5	695	
22		780	-95 +5	690	
21		750	-95 +5	660	
20N		770	-95 +5	680	
19		800	-95 +5	710	
18		840	-95 +5	750	
17		900	-95 +10	815	
16		945	-95 +10	860	
15N		910	-95 +10	825	
14		920	-95 +10	835	
13		860	-95 +10	775	
12		850	-95 +10	765	
11		830	-95 +10	745	
10N		865	-95 +10	780	
9		850	-95 +10	765	
8		850	-95 +10	765	
7		820	-95 +10	735	
6		856	-95 +10	765	
5N		860	-95 +10	775	
4		880	-95 +10	795	
L88W 3N		855	-95 +10	770	

at road at 12 + 60 N

STATION	TIME	RDG	BASF CORR DURANT CORR	CORR RDG	REMARKS
L88W 2N		860	-95 +10	775	
1N		880	-95 +10	795	
B.L.ON 88W	4:46	900	-85 +10	815	
B.L.ON 92W	4:48	930	-95 +10	845	
B.L.ON 84W	4:51	930	-95 -15	820	
B.L.ON 84W	5:01	940	-120 0	820	
L84W 1N		920	-120 0	800	
2		910	-120 0	790	
3		910	-120 0	790	
4		900	-120 0	780	
5N		900	-120 0	780	
6		890	-120 0	770	
7		860	-120 0	740	
8		870	-120 0	750	
9		880	-120 0	760	
10N		870	-120 0	770	
11		895	-120 0	775	
12		890	-120 0	770	
L84W 13N		860	-120 0	740	

cut road at 10+15N

STATION	TIME	RDG	BASE CORR	DIURNAL CORR	CORR RDG	REMARKS
L84W 14N		870	-120	0	750	
15N		860	-120	0	740	
16		925	-120	0	805	
17		980	-120	0	860	
18		1050	-120	0	930	
19		850	-120	0	730	
20		740	-120	0	720	
21		695	-120	0	575	
22		720	-120	0	600	
23		770	-120	0	650	
24		740	-120	0	620	
L84W 25N	5:25	740	-120	0	620	
L84W 25N	5:36	940	-120	0	820	

900

700

~~900~~

720

720

A

B

C

D

BC, D.

A

700

0

0

B

600

+10

0

-10

590

A

720

+10

-10

-20

695

B

630

+10

-20

600

C

B

"Rite in the Rain"
WEATHERPROOF



TRANSIT

NOTEBOOK NO. 301

DOUG

LAUNDRY

MAG NOTES
1973

MT MYE

SE. RIDGE

252E - 280E

BASE STATIONS

STATION	TIME	RDG	BASE CORR	JOURNAL	CORR RDG	REMARKS
B.L ON 56E	9:45	910	0	0	910	
B.L ON 56E	9:50	910	0	0	910	910
B.L ON 56E	10:02	910	0	0	910	
66E	10:04	930	0	0	930	930
56E	10:06	910	0	0	910	
60E	10:09	930	0	0	930	
64E	10:12	920	0	0	920	920
60E	10:14	930	0	0	930	
64E	10:16	920	0	0	920	
68E	10:18	940	0	0	940	940
64E	10:20	920	0	0	920	
68E	10:22	940	0	0	940	
72E	10:25	920	+10	0	930	940
68E	10:27	920	+10	+10	940	
72E	10:29	920	+30	0	950	
76E	10:32	920	+10	+20	945	940
72E	10:34	930	+25	0	950	
76E	10:36	920	+30	-5	935	
80E	10:39	920	+25	-5	935	935
76E	10:41	930	+30	-10	946	
80E	10:44	930	+20	0	935	
			+15	-10		

STATION	TIME	RDG	BASE CORR	DIVISIONAL	CORR RDG	REMARKS
BL ON 80E	10:54	930	+5	0	935	
BL ON 76E	10:56	930	+10	0	940	
L76E 1N		930	+10	+0	940	
2		960	+10	+0	970	
3		960	+10	+0	970	
4		955	+10	+0	965	
5		970	+10	+0	980	
6		960	+10	+0	970	
7		976	+10	+5	985	
8		970	+10	+5	985	
9		960	+10	+5	975	
10		965	+10	+5	980	
11		980	+10	+5	995	
12		996	+10	+5	1005	
13		1000	+10	+10	1020	
14		1000	+10	+10	1020	
15		820	+10	+10	840	
16		690	+10	+10	710	
17		530	+10	+10	550	
18		500	+10	+10	520	
L76E 19N		560	+10	+15	585	

STATION	TIME	RDG	BASE RDG.	JOURNAL	CORR RDG.	REMARKS
276E	20N	11:15	660	+10	+15	685
21			740	+10	+15	765
22			790	+10	+15	815
23			830	+10	+15	855
24			840	+10	+15	865
25N			840	+10	+20	870
26			820	+10	+20	850
27			800	+10	+20	830
28			905	+10	+20	935
29			940	+10	+20	970
30N			800	+10	+20	830
31			705	+10	+25	740
32			1000	+10	+25	1035
33			740	+10	+25	775
34			660	+10	+25	695
35			900	+10	+25	935
36			910	+10	+25	945
37			930	+10	+30	970
38			980	+10	+30	1020
39			1050	+10	+30	1090
40N	11:34		1125	+10	+30	1165
41			1110	+10	+30	1150
276E	42N		1100	+10	+30	1140

STATION	TIME	RDG	BASE CORR	DIVERG	CORR RDG	REMARKS
L76E 43N		970	+10	+35	1015	
44		980	+10	+35	1025	
45		960	+10	+35	1005	
46		940	+10	+35	985	
47		940	+10	+35	985	
48		940	+10	+35	985	
49		920	+10	+40	970	
50N		920	+10	+40	970	
51		910	+10	+40	960	
52		900	+10	+40	950	
53		890	+10	+40	940	
54		860	+10	+40	910	
55N		860	+10	+45	915	
56		860	+10	+45	915	
57		850	+10	+45	905	
58		840	+10	+45	895	
59		840	+10	+45	895	
L76E 60N	11:48	830	+10	+45	885	
L80E 60N	11:50	840	+10	+50	900	
59		850	+10	+50	910	
58		840	+10	+50	900	

STATION	TIME	RDG	BASE CORR	TEMP CORR	CORR RDG	REMARKS
57		845	+10	+50	905	
56		850	+10	+55	915	
55		880	+10	+55	945	
54		860	+10	+55	925	
53		870	+10	+55	935	
52		890	+10	+55	955	
51		900	+10	+55	965	
50 N		915	+10	+60	985	
49		920	+10	+60	990	
48		920	+10	+60	990	
47		940	+10	+60	1010	
46		935	+10	+60	1005	
45 N		960	+10	+60	1030	
44		970	+10	+65	1045	
43		920	+10	+65	995	
42		970	+10	+65	1045	
41		950	+10	+65	1025	
40 N	11 10	920	+10	+65	995	
39		860	+10	+65	935	
38		540	+10	+70	620	
37		720	+10	+70	800	
36		830	+10	+70	910	
35 N		880	+10	+70	960	
180E 34 N		810	+10	+70	890	

STATION	TIME	RDG	BASE RDG	DIFFERENTIAL	CORR. RDG	REMARKS
L80E 33N		900	+10	+70	980	
	32	770	+10	+75	755	
	31	700	+10	+75	785	
	30 N	720	+10	+75	805	
	29	840	+10	+75	925	
	28	760	+10	+75	845	
	27	750	+10	+75	835	
	26	720	+10	+80	810	
	25 N	700	+10	+80	790	
	24	710	+10	+80	790	
	23	660	+10	+80	750	
	22	640	+10	+80	730	
	21	550	+10	+80	640	
	20 N	470	+10	+85	565	
	19	440	+10	+85	585	
	18	330	+10	+85	425	
	17	290	+10	+85	385	
	16	⁴⁴⁵ 450	+10	+85	535	
	15 N	480	+10	+85	575	
	14	820	+10	+90	920	
	13	870	+10	+90	970	
	12	850	+10	+90	950	
L80E 11N		840	+10	+90	940	

STATION	TIME	RDG.	BASE JOURNAL CORP	CORR RDG	REMARKS
LBOE	10N	845	+10	+90	945
	9	830	+10	+90	930
	8	820	+10	+90	920
	7	820	+10	+95	925
	6	800	+10	+95	905
	5N	810	+10	+95	915
	4	790	+10	+95	995
	3	810	+10	+95	915
	2	810	+10	+95	915
	1	800	+10	+95	905
BL ON BOE	12:50	830	+10	+95	935
BL ON 78E	12:52	830	+10	+100	940
BL ON 72E	12:55	830	+10	+100	940
BL ON 68E	12:57	830	+10	+100	940

STATION	TIME	RDG	EASE CORR	JOURNAL	CORR RDG	REMARKS
BL ON 64E	2:58	840	+80	0	920	
BL ON 68E	3:00	860	+80	0	940	
BL ON 72E	3:03	860	+80	0	940	
L72E 1N		860	+80	-0	940	
2		850	+80	-0	930	
3		860	+80	-0	940	
4		865	+80	-0	945	
5N		860	+80	-0	940	
6		870	+80	-0	950	
7		870	+80	-0	950	
8		860	+80	-0	940	
9		860	+80	-0	940	
10 N		880	+80	-0	960	
11		920	+80	-0	1000	
12		940	+80	-0	1020	
13		925	+80	-0	1005	
14		930	+80	-0	1010	
15N		810	+80	-0	890	
16		750	+80	-0	830	
17		765	+80	-0	845	
18		750	+80	-0	830	
L72E 19N		730	+80	-0	810	

STATION	TIME	RDG.	BASE CORR	DIURNAL	CORR RDG.	REMARKS
L72E 20N	3:22	780	+80	-0	860	
21		820	+80	-0	900	
22		900	+80	-5	975	
23		820	+80	-5	895	
24		880	+80	-5	955	
25N		850	+80	-5	925	
26		570	+80	-5	645	
27		670	+80	-5	745	
28		720	+80	-5	795	
29		810	+80	-5	885	
30N		830	+80	-5	905	
31		630	+80	-5	705	
32		720	+80	-5	795	
33		1340	+80	-5	1415	
33+50		1240			1315	
34		510	+80	-5	585	
35N		820	+80	-5	895	
36		1010	+80	-5	1085	
37		1225	+80	-5	1300	
38		1050	+80	-5	1125	
39		1090	+80	-5	1125	
40N	3:46	1100	+80	-5	1175	
41		1100	+80	-5	1175	
L72E 42N		1075	+80	-10	1145	

STATION	TIME	RDG.	BASE DUAL CORR.	CORR RDG.	REMARKS
L72E 43N		1000	+80 -10	1070	
44		990	+80 -10	1060	
45N		970	+80 -10	1040	
46		950	+80 -10	1020	
47		950	+80 -10	1020	
48		940	+80 -10	1010	
49		930	+80 -10	1000	
50N		920	+80 -10	990	
51		890	+80 -10	960	
52		880	+80 -10	950	
53		890	+80 -10	960	
54		890	+80 -10	960	
55N		840	+80 -10	910	
56		850	+80 -10	920	
57		850	+80 -10	920	
58		850	+80 -10	920	
59		860	+80 -10	930	
L72E 60N	4:02	875	+80 -10	945	
L68E 60N	4:04	900	+80 -15	965	
59		880	+80 -15	945	
58		870	+80 -15	935	

SOIL RIBBON

Sta. 68E 50N 25 FT to
West

these lines are 50' apart
at this point

STATION	TIME	PDG	BASE CORR	ADJADIAL	CORR PDG	REMARKS
L68E 57N		850	+80	-15	915	
56		940	+80	-15	1005	
55N		880	+80	-15	945	
54		900	+80	-15	965	
53		880	+80	-15	945	
52		825	+80	-15	885	
51		870	+80	-15	935	
50N		920	+80	-15	985	
49		900	+80	-15	965	
48		930	+80	-15	995	
47		930	+80	-15	995	
46		950	+80	-15	1015	
45N		920	+80	-15	985	
44		975	+80	-15	1040	
43		1000	+80	-15	1065	
42		1050	+80	-15	1115	
41		1150	+80	-20	1210	
40N	3:25	1050	+80	-20	1110	
39		1010	+80	-20	1070	
38		1100	+80	-20	1160	
37		1450	+80	-20	1510	
36		1400	+80	-20	1460	
L68E 35N		890	+80	-20	1050	

STATION	TIME	RDG.	BASE DIURNAL CORR.	CORR RDG	REMARKS
L68E 34N		2075	+80 -20	2135	
	33	740	+80 -20	800	
	32	830	+80 -20	890	
	31	800	+80 -20	860	
	30N	780	+80 -20	840	
	29	660	+80 -20	720	
	28	765	+80 -20	825	
	27	720	+80 -20	780	
	26	690	+80 -20	750	
	25N	650	+80 -20	720	
	24	800	+80 -20	860	
	23	850	+80 -20	910	
	22	860	+80 -20	920	
	21	790	+80 -25	845	
	20N	760	+80 -25	815	
	19	770	+80 -25	825	
	18	820	+80 -25	875	
	17	820	+80 -25	875	
	16	820	+80 -25	875	
	15N	1010	+80 -25	1065	
	14	960	+80 -25	1015	
	13	830	+80 -25	885	
L68E 12N		840	+80 -25	895	

STATION	TIME	RDG	BASE CORR	JOURNAL	CORR RDG	REMARKS
168E 11N		810	+80	-25	865	
10		815	+80	-25	870	
9		820	+80	-25	875	
8		820	+80	-25	875	
7		770	+80	-25	825	
6		860	+80	-25	915	
5N		810	+80	-25	865	
4		820	+80	-25	875	
3		810	+80	-25	865	
2		860	+80	-25	915	
168E 11N		830	+80	-25	885	
B.LON 68E	5:00	885	+80	-25	940	
B.LON 72E	5:02	885	+80	-25	940	
B.LON 64E	5:05	880	+80	-40	920	

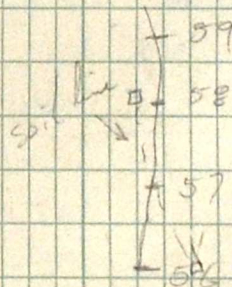
STATION	TIME	RDG	BASE CORR	DIURNAL	CORR RDG	REMARKS
B.S. 56 E	9:30	840				
B.S. 60 E	9:33	870				
B.L. ON 64 E	9:35	860				
L 64 E IN		880				
2		900				
3		900				ON-OFF LOOSE
B.S. 56 E	10:20	840	+70	0	910	
B.S. 60 E	10:22	860	+70	0	930	
B.L. ON 64 E	10:25	850	+70	0	920	
L 64 E IN		880	+70	0	950	
2		890	+70	-0	960	
3		890	+70	-0	960	
4		870	+70	-0	950	
5		855	+70	-0	925	
6		850	+70	-0	920	
7		830	+70	-0	900	
8		780	+70	-0	850	
9		730	+70	-0	800	
10		700	+70	-0	770	
11		710	+70	-0	780	
12		790	+70	-5	855	
13		820	+70	-5	885	
14		820	+70	-5	885	
15		820	+70	-5	885	
16		780	+70	-5	845	
17		820	+70	-5	885	
L 64 E 18 N		870	+70	-5	935	

STATION	TIME	RDG.	BASE CORR	JOURNAL	CORR RDG.	REMARKS
L64E 42N		1150	+70	-15	1205	
43		1100	+70	-15	1155	
44		1090	+70	-15	1145	
45N		1125	+70	-15	1180	
46		1150	+70	-15	1205	
47		1150	+70	-20	1200	
48		1125	+70	-20	1175	
49		1075	+70	-20	1125	
50N		1000	+70	-20	1050	
51		950	+70	-20	1000	
52		930	+70	-20	980	
53		930	+70	-20	980	
54		960	+70	-20	1010	
55		950	+70	-20	1000	
56		960	+70	-20	1010	
57		950	+70	-20	1000	
58		950	+70	-20	1000	
59		940	+70	-25	985	
L64E 60N	11:33	880	+70	-25	925	
L60E 60N	11:40	980	+70	-25	1025	
59		970	+70	-25	1015	out of hole
58		970	+70	-30	1010	

L64E
~~44~~ 1185 hits T-L cut 64E

64
 24
 40

L60N

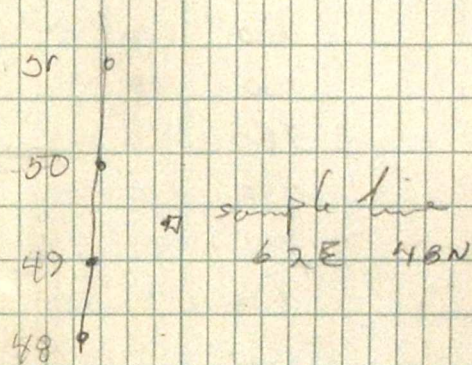


dash

lines 60N and 64N are
 650' apart

lines 64 and 60 are
 175' apart

STATION	TIME	RDG	BASE DIORNA CORR	CORR RDG	REMARKS
L60E 57N		960	+70 -30	1000	
56		940	+70 -30	980	
55		960	+70 -30	1000	
54		960	+70 -30	1000	
53		970	+70 -30	1010	
52		990	+70 -30	1030	
51		1000	+70 -30	1040	
50N		1025	+70 -30	1065	
49		1050	+70 -30	1090	
48		1100	+70 -30	1140	
47		1100	+70 -30	1140	
46		960	+70 -35	995	
45N		1110	+70 -35	1145	
44		1200	+70 -35	1235	
43		1225	+70 -35	1260	
42		1260	+70 -35	1295	
41		1300	+70 -35	1335	
40N	12:02	1250	+70 -35	1285	
39		1300	+70 -35	1335	
38		1675	+70 -35	1710	
37		1525	+70 -35	1560	
36		1325	+70 -35	1360	
L60E 35N		1025	+70 -35	1060	



STATION	TIME	RDG	BASE CORR.	DIURNAL CORR.	CORR RDG	REMARKS
L60E 34N		960	+70	-40	990	
33		1650	+70	-40	1680	
32		1425	+70	-40	1455	
31		780	+70	-40	810	
30N		740	+70	-40	770	
29		740	+70	-40	770	
28		720	+70	-40	750	
27		1125	+70	-40	1155	
26		740	+70	-40	770	
25N		860	+70	-40	890	
24		910	+70	-40	940	
23		870	+70	-40	900	
22		890	+70	-45	915	
21		890	+70	-45	915	
20N	12:22	880	+70	-45	905	
19		860	+70	-45	885	
18		880	+70	-45	905	
17		930	+70	-45	955	
16		940	+70	-45	965	
15N		900	+70	-45	925	
14		850	+70	-45	875	
13		880	+70	-45	905	
L60E 12N		780	+70	-45	805	

small table of water

STATION	TIME	RDG.	BASE CORP DIURNAL	CORR RDG	REMARKS
L60E 11N		760	+70 -50	780	
10		740	+70 -50	760	
9		780	+70 -50	800	
8		835	+70 -50	855	
7		855	+70 -50	875	
6		870	+70 -50	890	
5N		890	+70 -50	910	
4		910	+70 -50	930	
3		880	+70 -50	900	
2		880	+70 -50	900	
L60E 1N		880	+70 -50	900	
BL ON 60E	12:46	910	+70 -50	930	
B. LON 64E	12:43	900	+70 -50	920	
BL ON 60E	1:14	940	-20 0	920	
BL ON 56E	1:16	920	-10 0	910	
L 52E 1N	1:18	915	-10 +0	905	
2		910	-10 +0	900	
3		900	-10 +0	890	
L 52E 4N		900	-10 +0	890	

STATION	TIME	RDG	BASE CORR	DIA CORR	CORR RDG	Remarks
L52E 5N		900	-10	+0	890	
6		870	-10	+0	860	
7		830	-10	+0	820	
8		840	-10	+0	830	
9N		830	-10	+0	820	
10N		805	-10	+0	795	
11		780	-10	+0	770	
12		735	-10	+0	725	
13		720	-10	+0	710	
14		740	-10	+0	730	
15N		730	-10	+0	720	
16		750	-10	+0	740	
17		760	-10	+0	750	
18		780	-10	+0	770	
19		780	-10	+0	770	
20N	1-33	770	-10	+0	760	
21		810	-10	+0	800	
22		860	-10	+0	850	
23		860	-10	+0	850	
24		875	-10	+0	865	
25N		870	+10	+0	860	
26		960	-10	+0	950	
L52E 27N		980	-10	+0	970	

STATION	TIME	RDG	BASE CORR.	DIOR.	CORR RDG	REMARKS
L52E 28N		1000	-10	+0	990	
29		780	-10	+0	770	
30N		790	-10	+0	780	
31		760	-10	+0	750	
32		775	-10	+0	765	
33		960	-10	+0	950	
34		1110	-10	+0	1100	
35N		1040	-10	+0	1030	
36		1050	-10	+0	1040	
37		1175	-10	+0	1165	
38		1060	-10	+0	1050	
39		940	-10	+0	930	
40N	1:50	1025	-10	+0	1015	
41		1275	-10	+0	1265	
42		1350	-10	+0	1340	
43		1175	-10	+0	1165	
44		1000	-10	+5	995	
45		1000	-10	+5	995	
46		980	-10	+5	975	
47		1000	-10	+5	995	
48		1000	-10	+5	995	
49		1025	-10	+5	1020	
L52E 50N		1000	-10	+5	995	

64

at 50+20 E on T.G.

STATION	TIME	RDB.	BASE DIVR. CORR	CORR RDB	REMARKS
L52E 51D		1640	-10 +5	1035	
52		970	-10 +5	965	
53		930	-10 +5	925	
54		910	-10 +5	905	
55N		900	-10 +5	895	
56		890	-10 +5	885	
57		905	-10 +5	900	
58		940	-10 +5	935	
59		920	-10 +5	915	
L52E 60N	2:07	920	-10 +5	915	
L56E 60N	2:18	910	-10 +5	905	
59		920	-10 +5	915	
58		920	-10 +5	915	
57		930	-10 +5	925	
56	NO	STATION	+5		
55		930	-10 +5	925	
54		930	-10 +5	925	
53		955	-10 +5	950	
52		995	-10 +5	990	
51		980	-10 +5	975	
50		1000	-10 +5	995	
L56E 49N		1025	-10 +5	1020	

about 600' apart

STATION	TIME	RDG	BASE CORR ^{DIOR.}	CORR RDG.	REMARKS
L56E	48N	1025	-10 +5	1020	
	47	1075	-10 +5	1070	
	46	1125	-10 +5	1120	
	45N	1175	-10 +5	1170	
	44	1250	-10 +5	1245	
	43	1350	-10 +10	1350	
	42	1400	-10 +10	1400	
	41	1325	-10 +10	1325	
	40N	1250	-10 +10	1250	
	39	1325	-10 +10	1325	
	38	1225	-10 +10	1225	
	37	1010	-10 +10	1010	
	36	1160	-10 +10	1160	
	35N	1075	-10 +10	1075	
	34	1150	-10 +10	1150	
	33	930	-10 +10	930	
	32	770	-10 +10	770	
	31	740	-10 +10	740	
	30	780	-10 +10	780	
	29	800	-10 +10	800	
	28	830	-10 +10	830	
	27	840	-10 +10	840	
L56E	26N	870	-10 +10	870	

STATION	TIME	RDG.	BASE CORR ^{DIUR.}	CORR RDG.	REMARKS
L56E 25N		835	-10 +10	835	
24		825	-10 +10	825	
23		850	-10 +10	850	
22		815	-10 +10	815	
21		815	-10 +10	815	
20N	2:55	835	-10 +10	835	
19		780	-10 +10	780	
18		780	-10 +10	780	
17		770	-10 +10	770	
16		795	-10 +10	795	
15		780	-10 +10	780	
14		800	-10 +10	800	small creek at
13		800	-10 +10	800	12+60N
12		760	-10 +10	760	
11		760	-10 +10	760	
10N		820	-10 +10	820	
9		840	-10 +10	840	
8		850	-10 +10	850	
7		885	-10 +10	885	
6		NO	STATION		
5N		880	-10 +10	880	
4		900	-10 +10	900	
3		900	-10 +10	900	
2		850	-10 +10	850	
1		870	-10 +10	870	
B.LON 56E	3:17	910	-10 +10	910	
B.LON 60E	3:20	920			
B.LON 56E	3:22	910	-10 +10	910	
B.LON 60E	3:25	935	-10 +5	930	

"Rite in the Rain"

WEATHERPROOF



TRANSIT

NOTEBOOK NO. 211

D. LOWERY

MAG

NOTES

S.E. Ridge

BASE STATIONS

STATION	TIME	RDG	BASE CORR	JOURNAL CORR	CORR RDG	REMARKS
B.L. ON 60E	9:30	870	+60	0	930	
B.L. ON 60E	9:35	880	+50	0	930	
B.L. ON 60E	9:40	880	+50	0	930	
B.L. ON 56E	9:42	870	+40	0	910	
B.L. ON 56E	9:45	880	+30	0	910	
B.L. ON 56E	9:47	890	+30	0	920	
B.L. ON 56E	9:50	880	+30	0	910	
B.L. ON 56E	9:52	890	+30	0	920	915
56E	9:54	895	+30	-5	910	
52	9:56	890	+25	0	910	
48	9:58	890	+30	-10	910	
48	9:58	890	+25	+5	920	920
52	10:00	880	+30	+5	915	
48	10:02	885	+25	+10	915	
44	10:05	860	+35	0	925	
44	10:05	860	+35	+10	905	900
48	10:09	880	+35	0	895	
48	10:09	880	+35	+5	920	
44	10:12	860	+40	0	905	
40	10:14	880	+35	+10	920	920
44	10:16	860	+40	0	900	
40	10:18	880	+40	0	920	
36	10:21	870	+40	0	910	915
40	10:23	880	+40	0	920	
36	10:25	880	+40	0	920	
32	10:27	905	+35	0	940	940
36	10:29	880	+35	0	915	
32	10:31	905	+35	0	940	
B.L. ON 28E	10:33	905	+35	0	940	940

Stream at 44 + 40 E

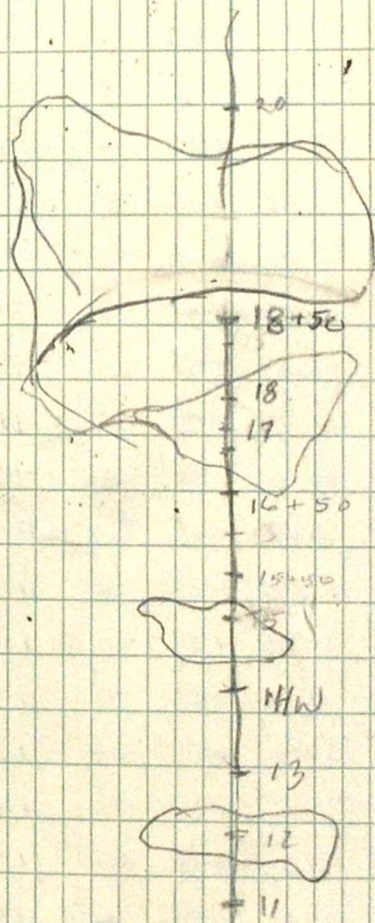
STATION	TIME	RDG	BASE CORR	DIURNAL CORR	CORR RDG.	REMARKS
BLON 32E	9:10:35	905	+35	0	940	
			+35	0		
28E	10:37	900	+40	0	940	
			+35	0	935	
24E	10:39	900	+40	0	940	940
			+40	0		
28E	10:41	900	+40	0	940	
			+40	0		
24E	10:43	900	+40	0	940	
			+40	0		
20E	10:45	900	+40	0	940	940
			+40	0		
24E	10:47	895	+40	+5	940	
			+40	+5		
BLON 20E	10:49	890	+40	+10	940	

BLON 20E	10:54	895	+45	0	940	
L20E 1N		895	+45	0	940	
2		870	+45	0	915	
3		880	+45	0	925	
4		865	+45	0	910	
5		850	+45	0	895	
6		825	+45	0	870	
7		840	+45	0	885	
8		840	+45	0	885	
9		845	+45	0	890	
L20E 10N		850	+45	0	895	

1
 2
 3
 4
 5
 6
 7
 8
 9

STATION	TIME	RDG.	BASE DIRECTION CORR	CORR RDG	REMARKS
L20E 11N	11:02	840	+45 0	885	
12		LARGE	POND		
13	11:06	820	+45 0	865	
14	11:07	830	+45 0	875	
15N			POND 0		
15+50 16	11:09	840	+45 0	885	
16+50 17	11:10	830	+45 0	875	
18			POND		
18+20 19	11:13	800	+45 0	845	
20N	11:19	800	+45 0	845	
21		820	+45 0	865	
22		800	+45 -5	840	
23		800	+45 -5	840	
24		800	+45 -5	840	
25		780	+45 -5	820	
26		750	+45 -5	790	
27		750	+45 -5	790	
28		730	+45 -5	770	
29		730	+45 -5	770	
30N		720	+45 -5	760	
31		700	+45 -5	740	
32		700	+45 -5	740	
L20E 33N		725	+45 -5	765	

pond slope of 11-15 N



STATION	TIME	RDG.	BASE CORR	DIPRAL	CORR RDG	REMARKS
L20E 34N		720	+45	-5	760	
35N		730	+45	-5	770	
36		740	+45	-5	780	
37		790	+45	-5	830	
38		790	+45	-5	830	
39		840	+45	-5	880	
40N	11:35	880	+45	-5	920	
41		915	+45	-5	955	
42		945	+45	-5	985	
43		1000	+45	-10	1035	
44		1075	+45	-10	1110	
45N		1100	+45	-10	1135	
46		1110	+45	-10	1145	
47		1100	+45	-10	1135	
48		1075	+45	-10	1110	
49		1100	+45	-10	1135	
50N		1100	+45	-10	1135	
51		1110	+45	-10	1145	
52		1110	+45	-10	1145	
53		1110	+45	-10	1145	
54		1100	+45	-10	1145	
55N		1100	+45	-10	1145	
L20E 56N		1100	+45	-10	1145	

stream cut 34 + 15 N

STATION	TIME	RDC	BASE CORR	DUP	CORR RDC	REMARKS
20E 52N		1090	+45	-10	1125	
58		1060	+45	-10	1095	
59		1090	+45	-10	1125	
L20E 60N	11:48	1075	+45	-10	1110	
L24E 60N	11:52	1010	+45	-15	1040	
59		1050	+45	-15	1080	
58		1050	+45	-15	1080	
57		1040	+45	-15	1070	
56		1050	+45	-15	1080	
55N		1050	+45	-15	1080	
54		1060	+45	-15	1090	
53		1060	+45	-15	1090	
52		1075	+45	-15	1105	
51		1060	+45	-15	1090	
50N		1060	+45	-15	1090	
49		1060	+45	-15	1090	
48		1050	+45	-15	1080	
47		1050	+45	-15	1080	
46		1050	+45	-15	1080	
45N		1060	+45	-15	1090	
44		1100	+45	-15	1130	
L24E 43N		1125	+45	-15	1155	

lines are 300' apart

STATION	TIME	RDC.	BASE CORR	DIOR	CORR. RDC.	REMARKS
L24E 42N		1050	+45	-20	1075	
41		970	+45	-20	995	
40N	12:09	910	+45	-20	935	
39		850	+45	-20	875	
38		830	+45	-20	855	
37		820	+45	-20	845	
36		775	+45	-20	800	
35N		740	+45	-20	765	
34		700	+45	-20	725	
33		640	+45	-20	665	
32		660	+45	-20	685	
31		680	+45	-20	705	
30N		725	+45	-20	750	
29		740	+45	-20	765	
28		745	+45	-20	770	
27		740	+45	-20	765	
26		746	+45	-20	765	
25N		760	+45	-20	785	
24		790	+45	-20	815	
23		800	+45	-20	825	
22		840	+45	-20	865	
21		830	+45	-25	850	
L24E 20N	12:25	830	+45	-25	850	

L24E, 40 + 20 hits T.C. at 24 + 40E

stream

STATION	TIME	RDG.	BASE CORR	DIOP	CORR RDG.	REMARKS
BL 24E 19N		820	+45	-25	840	
18		810	+45	-25	830	
17		815	+45	-25	835	
16		846	+45	-25	860	
15N		840	+45	-25	860	
14		850	+45	-25	870	
13	12:31	855	+45	-25	875	
12	12:33	860	+45	-25	880	
11		860	+45	-25	880	
10N		870	+45	-25	890	
9		850	+45	-25	870	
8		866	+45	-25	880	
7		850	+45	-25	870	
6		840	+45	-25	860	
5N		860	+45	-25	880	
4		870	+45	-25	890	
3		880	+45	-25	900	
2		890	+45	-25	910	
BL 24E 1 N		880	+45	-25	900	
BL ON 24E	12:46	920	+45	-25	940	
BL ON 20E	12:48	920	+45	-25	940	

pond reading taken 50' E of line

STATION	TIME	RDC	BASE CORR	DICR	CORR RDC	REMARKS
L32E 42N		775	0	+5	780	
43		805	0	+5	810	
44		880	0	+5	885	
45N		980	0	+5	985	
46		1010	0	+5	1015	
47		1010	0	+5	1015	
48		980	0	+5	985	
49		960	0	+5	965	
50N		960	0	+10	970	
51		965	0	+10	975	
52		990	0	+10	1000	
53		1000	0	+10	1010	
54		980	0	+10	990	
55N		980	0	+10	990	
56		960	0	+10	970	
57		965	0	+10	975	
58		975	0	+10	985	
59		980	0	+10	990	
L32E 60N	2:50	1000	0	+10	1010	
L28E 60N	2:52	1000	0	+10	1010	
59		995	0	+10	1005	
L28E 58N		990	0	+10	1000	

lines 32E and 28E
are 230' apart.

STATION	TIME	RDC	BASE CORR	DIUR.	CORR RDC	REMARKS
L28E 57N		1000	0	+10	1010	
56		990	0	+10	1000	
55N		1000	0	+10	1010	
54		1000	0	+10	1010	
53		1000	0	+10	1010	
52		1000	0	+10	1010	
51		980	0	+10	990	
50N		970	0	+10	980	
49		990	0	+15	1005	
48		1000	0	+15	1015	
47		1000	0	+15	1015	
46		1000	0	+15	1015	
45N		995	0	+15	1010	
44		930	0	+15	945	
43		900	0	+15	915	
42		870	0	+15	885	
41		830	0	+15	845	
40N	3.07	820	0	+15	835	
39		840	0	+15	855	
38		800	0	+15	815	
37		750	0	+15	765	
36		720	0	+15	735	
L28E 35N		690	0	+15	705	

42 + 20N lit T.L. at 2015E

STATION	TIME	RDG	BASE DIOR. CORR	CORR RDG	REMARKS
L28E 34N		670	0	+15	685
33		670	0	+15	685
32		710	0	+15	725
31		680	0	+15	695
30N		695	0	+15	710
29		700	0	+15	715
28		755	0	+15	770
27		760	0	+15	775
26		770	0	+15	785
25N		815	0	+20	835
24		810	0	+20	830
23		830	0	+20	850
22		810	0	+20	830
21		820	0	+20	840
20N	2:23	820	0	+20	840
19		820	0	+20	840
18		820	0	+20	840
17		830	0	+20	850
16		830	0	+20	850
15N		810	0	+20	830
14		840	0	+20	860
13		850	0	+20	870
L28E 12N		835	0	+20	855

stream at 33+20N

STATION	TIME	RDG	BASE CORR	DIOR.	CORR RDG	REMARKS
L 28E	11N	855	0	+20	875	
	10	850	0	+20	870	
	9	860	0	+20	880	
	8	830	0	+20	850	
	7	850	0	+20	870	
	6	860	0	+20	880	
	5N	890	0	+20	910	
	4	870	0	+20	890	
	3	890	0	+20	910	
	2	885	0	+20	905	
	1	900	0	+20	920	
B L ON 28E	3:40	920	0	+20	940	
B L ON 32E	3:43	920	0	+20	940	
B L ON 32E	4:12	255	-15	0	940	
B L ON 36E	4:14	920	-5	0	915	
B L ON 40E	4:16	935	-15	0	920	
L 40E	1N	920	-15	+0	905	
	2N	925	-15	+0	910	
L 40E	3N	930	-15	+0	915	

STATION	TIME	RDG	BASE CORR	DIP.	CORR RDG	REMARKS
L40E 4N		915	-15	+0	900	
5		946	-15	+0	925	
6		916	-15	+0	895	
7		870	-15	+0	855	
8		860	-15	+0	845	
9		805	-15	+0	790	
10N		820	-15	+0	805	
11		790	-15	+5	780	
12		770	-15	+5	760	
13		785	-15	+5	775	
14		775	-15	+5	765	
15N		780	-15	+5	770	
16		800	-15	+5	790	
17		830	-15	+5	820	
18		820	-15	+5	810	
19		840	-15	+5	830	
20N	4 38	840	-15	+10	835	
21	4	820	-15	+10	815	
22		880	-15	+10	875	
23		880	-15	+10	875	
24		860	-15	+10	855	
25N		910	-15	+10	905	
L40E 26N		830	-15	+10	825	

stream at 4+90W

STATION	TIME	RDL	BASE CORR	DIOP	CORR RDL	REMARKS
L40E 27N		650	-15	+10	645	
28		650	-15	+10	645	
29		710	-15	+15	710	
30N		760	-15	+15	760	
31		755	-15	+15	755	
32		740	-15	+15	740	
33		725	-15	+15	725	
34		760	-15	+15	760	
35N		880	-15	+15	880	
36		1050	-15	+15	1050	
37		No STATION				
38		970	-15	+15	970	
39		940	-15	+20	945	
40N	4:54	980	-15	+20	985	
41		885	-15	+20	890	
42		915	-15	+20	920	
43		1075	-15	+20	1080	
44		1300	-15	+20	1305	
45N		1340	-15	+20	1345	
46		1290	-15	+20	1295	
47		1110	-15	+25	1120	
48		1010	-15	+25	1020	
L40E 49N		1025	-15	+25	1035	

stream at 12+90N

L36E 20N		660	+255+20	935
21		670	+255+25	950
22		670	+255+25	950
23		660	+255+25	940
24		620	+255+30	905
25N		620	+255+30	905
26		610	+255+30	895
27		470	+255+35	660
28		300	+255+35	590
29		420	+255+0	675
L36E 30N	2:34	445	+255+5	705
	↑ 16min ↓			
B.L ON 30E	2:50	560	+255+100	915
B.L ON 40E	2:52	540	+255+125	920
B.L ON 44E	2:54	550	+255+95	900
B.L ON 60E	3:03	520	+255+135	910

B.L ON 44E	1:50	720	+180	900
B.L ON 44E	2:00	670	+230 0	900
B.L ON 40E	2:01	690	+230 0	920
B.L ON 44E	2:03	660	+240 0	900
B.L ON 44E	2:05	680	+240 0	920
B.L ON 30E	2:06	660	+255 0	915
L36E 1N		650	+255 0	905
2		625	+255 0	880
3		625	+255 0	880
4		620	+255 0	885
5N		630	+255 +5	885
6		610	+255 +5	865
7		620	+255 +5	880
8		630	+255 +5	890
9		590	+255 +10	855
10N		580	+255 +10	845
11		590	+255 +10	855
12		575	+255 +10	840
13		550	+255 +15	820
14		560	+255 +15	830
15N	2:21	565	+255 +15	835
16		565	+255 +15	835
17		560	+255 +20	835
18		600	+255 +20	875
L36E 19N		670	+255 +20	945

STATION	TIME	RDG.	BASE CORR. DIP.	CORR. RDG.	REMARKS
L40E 50N		1050	-15 +25	1060	
51		1000	-15 +25	1010	
52		970	-15 +25	980	
53		960	-15 +25	970	
54		930	-15 +25	940	
55N		930	-15 +30	945	
56		916	-15 +30	925	
57		910	-15 +30	925	
58		930	-15 +30	945	
59		960	-15 +30	975	
L40E 60N		990	-15 +30	1005	
61	5:17	1000	-15 +30	1015	
L36E 60N	5:19	990	-15 +35	1010	
59		950	-15 +35	970	
58		940	-15 +35	960	
57		950	-15 +35	970	
56		960	-15 +35	980	
55N		940	-15 +35	960	
54		930	-15 +35	950	
53		970	-15 +40	995	
52		1000	-15 +40	1025	
51		1000	-15 +40	1025	
L36E 50N		1040	-15 +40	1065	

actually 60N one station wrong
two lines are 200' apart

poor connection in wire

STATION	TIME	RDG	BASE CORR	DIP	CORR RDG	REMARKS
L36E 49N		1010	-15	+40	1035	
48		990	-15	+40	1015	
47		1090	-15	+40	1115	
46		1325	-15	+40	1350	
45N		1425	-15	+45	1455	
44	5:44	1260	-15	+45	1290	
43		1150	-15	+45	1180	
42		915	-15	+45	945	
41		860	-15	+45	890	
40N		960	-15	+45	990	
39		960	-15	+45	990	
38		950	-15	+45	980	
37		950	-15	+50	985	
36		860	-15	+50	895	
35N		790	-15	+50	825	
34		735	-15	+50	770	
33		700	-15	+50	735	
32		740	-15	+50	775	
31		730	-15	+50	765	
30N		670	-15	+50	705	
29		640	-15	+50	675	
28	6:08	550	-15	+55	590	
L36E 27N						

line offset over to
East 420-920 (over 950)

Having trouble reading - loose connection

STATION	TIME	RDG	BASE CORR	DIP	CORR RDG	REMARKS
B.L. ON 30E	6:25	870	-15	+60	915	
B.L. ON 32E	6:27	880	-15	+75	940	
B.L. ON 28E	6:29	880	-15	+75	940	
B.L. ON 60E	11:46	835	+95	0	930	
B.L. ON 56E	11:48	805	+105	0	910	
B.L. ON 52E	11:49	800	+115	0	915	
B.L. ON 48E	11:50	800	+120	0	920	
B.L. ON 44E	11:52	785	+115	0	900	
L44E 1N		800	+115	0	915	
2		790	+115	0	905	
3		790	+115	0	905	
4		775	+115	0	890	
5N		755	+115	0	870	
6		750	+115	0	865	
7		750	+115	0	865	
8		700	+115	0	815	
9		670	+115	0	785	
10N		655	+115	0	770	
11		640	+115	0	755	
L44E 12N		640	+115	+5	755	

NOTE: base readings today aren't as consistent as one would like. Reading dropped ^{about} 1300 gammas in 3 hours. Had to solder a wire in Mag last night. Also we got 6" of snow during night. Cold might account for the large base connection.

stream at 2+20N

NB

Also notes magnetic storms about this time triggered his surveys.

STATION	TIME	RDG	BASE CORR DIP.	CORR RDG	REMARKS
L44E	13N	640	+115 +5	760	
	14	640	+115 +5	760	
	15N	640	+115 +5	760	
	16	650	+115 +5	770	
	17	655	+115 +5	775	
	18	660	+115 +5	780	
	19	665	+115 +5	785	
	20N	12:12 660	+115 +5	780	
	21	670	+115 +5	790	
	22	690	+115 +5	810	
	23	720	+115 +10	840 ⁵	
	24	730	+115 +10	850 ⁵	
	25N	710	+115 +10	830 835	
	26	725	+115 +10	850	
	27	700	+115 +10	825	
	28	680	+115 +10	805	
	29	570	+115 +10	695	
	30N	610	+115 +10	735	
	31	580	+115 +10	705	
	32	600	+115 +10	725	
	33	600	+115 +10	725	
	34	590	+115 +15	720	
L44E	35N	630	+115 +15	760	

STATION	TIME	RDG	BASE CORR.	DIVR.	CORR RDG.	REMARKS
L44E 36N		690	+115	+15	820	
37		850	+115	+15	980	
38		950	+115	+15	1080	
39		780	+115	+15	910	
40N	12 28	790	+115	+15	920	
41		830	+115	+15	960	
42		740	+115	+15	870	
43		730	+115	+15	860	
44		710	+115	+20	845	
45N		740	+115	+20	875	
46		795	+115	+20	930	
47		1000	+115	+20	1035	
48		1190	+115	+20	1325	
49		1060	+115	+20	1035	
50N		1000	+115	+20	1035	
51		1000	+115	+20	1035	
52		970	+115	+20	1105	
53		900	+115	+20	1035	
54		910	+115	+25	1050	
55N		880	+115	+25	1020	
56		850	+115	+25	990	
57		810	+115	+25	950	
L44E 58N		820	+115	+25	960	

L44E 44N *rel* Sp. 3. 1. 0. 4
 42 + 75 E

STATION	TIME	RDG	BACK CORR CORR	DIOP RDG	REMARKS
59		810	+115	+25	950
L44E 60N	12:45	810	+115	+25	950
L48E 60N	12:51	725	+115	+30	870
59		760	+115	+30	745
58		740	+115	+30	885
57		760	+115	+30	905
56		780	+115	+30	925
55N		800	+115	+30	945
54		820	+115	+30	965
53		870	+115	30 +35	1020 1020
52		880	+115	30 +35	1030
51		880	+115	30 +35	1030
50N		870	+115	30 +35	1020
49		860	+115	30 +35	1010
48		870	+115	30 +35	1020
47		920	+115	30 +35	1070
46		950	+115	30 +35	1100
45N		1000	+115	30 +35	1150
44		920	+115	30 +35	1070
43		780	+115	30 +40	935
42		800	+115	30 +40	955
L44E 41N		850	+115	30 +40	1005

18E									
46	1:14	870	+115	+40					1025
39		880	+115	+40					1035
38		840	+115	+40					995
37		790	+115	+40					945
36		810	+115	+40					965
35N		780	+115	+40					855
34		580	+115	+40					735
33		570	+115	+45					725
32		620	+115	+45					775
31		640	+115	+45					800
30N		690	+115	+45					850
29		700	+115	+45					860
28		695	+115	+45					855
27		730	+115	+45					890
26		740	+115	+45					900
25N		760	+115	+45					920
24		690	+115	+45					850
23		690	+115	+45					850
22		660	+115	+50					825
21		640	+115	+50					805
20N	1:30	640	+115	+50					805
19		630	+115	+50					795
18									
17N		640	+115	+50					805

time was
about 550
apart

L48E 45N
hits SOB
at 48E

NO STAT 1000

STATION	TIME	RDG	BASE CORR	DIOP.	CORR RDG.	REMARKS
L48E	16N	660	+115	+50	825	
	15N	630	+115	+50	795	
	14	590	+115	+50	755	
	13	590	+115	+50	755	
	12	610	+115	+50	775	
	11	585	+115	+55	755	
	10N	590	+115	+55	760	
	9	620	+115	+55	790	
	8	646	+115	+55	810	
	7	660	+115	+55	830	
	6	700	+115	+55	870	
	5N	720	+115	+55	890	
	4	715	+115	+55	885	
	3	725	+115	+55	895	
	2	700	+115	+55	870	
L48E	1N	735	+115	+55	905	
BLON48E	1:47	750	+115	+55	920	
BLON48E	1:50	720	+115	+65	900	

xuuz
PACIFIC
WATERPROOF

LEVEL

NOTEBOOK No. 311

MAGNETOMETER

NOTES

MT. MYE

1972

#3

STATION	TIME	RDG	CORR.	CORR RDG	REMARKS
BS.					
72N 220W	8:30	240	-40	200	
BS					
80N 212W	8:40	200	-65	135	
BS.					
80N 204W	8:45	210	-85	125	
BS.					
80N 196W	8:50	210	-75	135	
BS.					
80N 188W	8:54	250	-100	150	
BS.					
80N 180W	8:58	240	-80	160	
BS.					
80N 176W	9:00	220	-70	150	
BS.					
80N 172W	9:03	230	-100	130	
BS.					
80N 176W	9:10	220	-70	150	
176W 80W	9:12	200	-70	130	
79		210	-70	140	no 79N
78		210	-70	140	
77			-70		
77 76		205	-65	140	
76 75		190	-65	125	
75 74		200	-65	135	
73		220	-65	155	Sta. of soil line is at 176W 73+30N
72		230	-60	170	
71		240	-60	180	
70N	9:21	220	-60	160	
70					
176W 69N		220	-60	160	

STATION	TIME	RDG.	CORR.	CORR RDG	REMARKS
69N					
176W 68N		220	-55	165	
62		200	-55	145	
66		0	-55	-55	stream
65N		90	-55	35	→ 55W at 65+60N
65 64		160	-55	105	
63		160	-50	110	
62		200	-50	150	
61		260	-50	210	
60N	9:30	290	-50	240	
60 59		350	-50	300	
58		530	-45	485	
57		560	-45	515	
56		460	-45	415	
55 N		395	-45	350	
55 54		410	-45	365	
54 53		360	-40	320	
53 52		330	-40	290	
52 51		250	-40	210	
51 50N	9:37	270	-40	230	
50 49		280	-35	245	
49 48		260	-35	225	
48 47		280	-35	245	
47					
176W 46N		320	-35	285	

LINE : 176 WEST DATE : JULY 4, 1972					LINE : 172 WEST DATE : JULY 4, 1972						
STATION	TIME	RDG.	CORR	CORR. RDG.	REMARKS	STATION	TIME	RDG	CORR.	CORR RDG.	REMARKS
46 176W 45N		420	-30	390		B.S. 172W 25N	9:59	100	-10	90	
45 44		250	-30	220				280	-10	270	
44 43		200	-30	170		172W 26		470	-10	460	
43 42		160	-30	130		27		560	-10	550	
42 41		170	-25	145		28		750 1250	-10 -10	740 1240	
41 40 N	9:43	160	-25	135		29		1325	-15	1310	
40 39		180	-25	155		30	10:04	770	-15	755	
39 38		260	-25	235		31		540	-15	525	
38 37		230	-20	205		32		410	-15	395	
37 36		140	-20	120	two stags	33		270	-20	250	
36 36		130	-20	110	36N	34		180	-20	160	
35 35 N		170	-20	150	36N	35		180	-20	160	
34		170	-20	150		36		230	-20	210	
33		280	-15	265		37		210	-25	185	
32		460	-15	445		38		225	-25	200	
31		480	-15	465		39		230	-25	205	
30 N	9:52	510	-15	495		40 N	10:12	190	-25	165	
29		610	-10	600		41		200	-30	170	
28		630	-10	620		42		200	-30	170	
27		780	-10	970		43		190	-30	160	
176W 26 W		620	-10	610		44		230	-30	200	
B.S. 176W 24 25N	9:56	230	-10	230		45 N		240	-35	205	
						472W 46 N		260	-35	225	

STATION	TIME	RDG.	CORP.	CORP. RDG.	REMARKS
172W 47N		260	-35	225	
48		200	-35	165	
49		250	-40	210	
50N	10:18	260	-40	220	
51		250	-40	210	
52		250	-40	210	
53		270	-45	225	
54		315	-45	270	
55N		380	-45	335	
56		430	-45	385	
57		490	-50	440	
58		500	-50	450	
59		490	-50	440	
60N	10:25	470	-50	420	
61		390	-55	335	
62		350	-55	295	
63		300	-55	245	
64		280	-55	225	
65N		250	-60	190	
66		235	-60	175	
67		230	-60	170	
68		240	-60	180	
172W 69N		370	-65	305	

STATION	TIME	RDG.	CORP.	CORP. RDG.	REMARKS
172W 70N	10:31	520	-65	455	
71		240	-65	175	
72		220	-70	150	
73		230	-70	160	
74		240	-70	170	
75N		220	-75	145	
76		225	-75	150	
77		230	-75	155	
78		240	-80	160	
79		220	-80	140	
172W 80N	10:40	240	-80	160	
B.S.					
80N 172W	10:42	210	-80	130	
B.S.					
80N 176W	10:44	220	-70	150	
B.S.					
80N 172W	10:46	215	-85	130	
172W 80N		250	-75	175	
81		210	-75	135	
82		240	-75	165	
83		230	-75	155	
84		220	-75	145	
85N		290	-75	215	
172W 86N		220	-75	145	

LINE : 172 WEST DATE : JULY 4, 1972					LINE : 172 WEST DATE : JULY 4, 1972						
STATION	TIME	RDG	CORR	CORR RDG.	REMARKS	STATION	TIME	RDG.	CORR.	CORR RDG	REMARKS
172W 87N		230	-75	155		172W 110N	11:09	230	-70	160	
88		210	-75	135		111		140	-70	70	
89		205	-75	130		112		140 125	-70	70	
90 N	10:55	200	-75	125		113		125	-70	55	
91		200	-75	125		114		120	-70	50	
92		200	-75	125	no sta. <u>92N</u>	115 N		120	-70	50	
93		195	-75	120		116		120	-70	50	
94		200	-75	125		117		110	-70	40	
95N		140	-75	65		118		120	-70	50	
96		145	-75	70		119		135	-70	65	
97		145	-75	70		120N	11:17	130	-70	60	
98		150	-75	75		121		140	-70	70	
99		140	-75	65		122		140	-70	70	
100N	11:02	150	-75	75		123		145	-70	75	
101		150	-75	75		124		150	-70	80	
102		140	-75	65		172W 125N	11:22	130	-70	60	
103		150	-75	75							
104		160	-70	90							
105 N		150	-70	80		176W 125N	11:31	110	-70	40	
106		140	-70	70		124		130	-70	60	
107		180	-70	110		123		140	-70	70	
108		150	-70	80		122		150	-70	80	
172W 109N		150	-70	80		176W 121N		140	-70	70	

STATION	TIME	RDG	CORR	CORR RDG	REMARKS
176W 120N	11:35	140	-70	70	
119		140	-70	70	
118		130	-70	60	
117		140	-70	70	
116		140	-70	70	
115N		140	-70	70	
114		145	-70	75	
113		130	-65	65	
112		130	-65	65	
111		150	-65	85	
110N		150	-65	85	
109		140	-65	75	
108		130	-65	65	
107		300	-65	235	
106		100	-65	35	
105N	11:50	130	-65	65	
104		180	-65	115	
103		160	-65	95	
102		170	-65	105	
101		180	-65	115	
100N	11:59	190	-65	125	
99		180	-65	115	
176W 98N		170	-65	105	

STATION	TIME	RDG	CORR	CORR RDG	REMARKS
176W 97N		125	-65	110	
96		170	-65	105	
95N		160	-65	95	
94		160	-65	95	
93		160	-65	95	
92		170	-65	105	
91		170	-65	105	
90N	12:05	180	-65	115	
89		180	-65	115	
88		180	-65	115	
87		180	-65	115	
86		185	-65	120	
85N		190	-65	125	
84		190	-65	125	
83		190	-65	125	
82		210	-65	145	
81		220	-65	155	
176W 80N	12:11	180	-65	115	
B ^s 80N 176W	12:12	210	-60	150	
B ^s 80N 172W	12:15	200	-70	130	
B ^s 80N 176W	12:17	210	-60	150	

LUNCH

LINE : 188 WEST		DATE : JULY 4, 1972				LINE : 188 WEST		DATE : JULY 4, 1972			
STATION	TIME	RDC	CORR	CORR RDC	REMARKS	STATION	TIME	RDC	CORR	CORR RDC	REMARKS
B.S.						188W 97N		170	-70	120	
80N 176W	1:15	220	-70	150		98		140	-70	70	
B.S.						99		180	-70	80	
80N 180W	1:20	230	-70	160		100	1:43	170	-70	100	
B.S. N						101		180	-70	110	
80 184W	1:23	220	-60	160		102		180	-70	110	
B.S.						103		298	-70	220	
80N 188W	1:25	220	-70	150		104		310	-70	240	
188W 80N	1:27	220	-70	150		105N		170	-70	100	
81		210	-70	140		106		160	-70	90	
82		200	-70	130		107		150	-70	80	
83		190	-70	120		108		160	-70	90	
84		185	-70	115		109		160	-70	90	
85 N		180	-70	110		110N	1:51	150	-70	80	
86		170	-70	100		111		170	-70	100	
87		170	-70	100		112		170	-70	100	
88		200	-70	130		113		160	-70	90	
89		170	-70	100		114		160	-70	90	
90 N	1:34	160	-70	90		115N		155	-70	85	
91		166	-70	90		116		190	-70	120	
92		160	-70	90		117		160	-70	90	
93		150	-70	80		118		150	-70	80	
94		150	-70	80		188W 119N		145	-70	75	
95 N		160	-70	90							
188W 96N		170	-70	100							

LINE:	188 + 189 WEST				
DATE:	JULY 4, 1972				
STATION	TIME	RDG.	CORR	CORR. RDG.	REMARKS
188W 120N	2:00	140	-70	70	
121		140	-70	70	
122		120	-70	50	
123		125	-70	55	
124		150	-70	80	
188W 125N	2:04	140	-70	70	
189W 125N	2:13	160	-70	90	
124		140	-70	70	
123		160	-70	90	
122		130	-70	60	
121		140	-70	70	
120N		140	-70	70	
119		150	-70	80	
118		160	-70	90	
117		160	-70	90	
116		160	-70	90	
115N	2:25	160	-70	90	
114		160	-70	90	
113		160	-70	90	
189W 112N		170	-70	100	

LINE:	180 WEST				
DATE:	JULY 4, 1972				
STATION	TIME	RDG.	CORR.	CORR RDG.	REMARKS
180W 111N		160	-70	90	
110N	2:30	170	-70	100	
109		150	-70	80	
108		150	-70	80	
107		175	-70	105	
106		330	-70	260	
105N		610	-70	540	
104		200	-70	130	
103		190	-70	120	
102		180	-70	110	
101		180	-70	110	
100N	2:43	180	-70	110	
99		180	-70	110	
98		190	-70	120	
97		200	-70	130	
96		195	-70	125	
95N		180	-70	110	
94		180	-70	110	
93		180	-70	110	
92		185	-70	115	
91		185	-70	115	
90N	2:52	180	-70	110	
180W 89N		180	-70	110	

LINE: 180 WEST
DATE: JULY 4, 1972

STATION	TIME	RDG	CORR	CORR. RDG.	REMARKS
180W 88N		185	-70	115	
87		190	-70	120	
86		190	-70	120	
85N		210	-70	140	
84		170	-70	100	
83		220	-70	150	
82		230	-70	140	
81		240	-70	170	
180W 80N	3:00	250	-70	180	

			-70		
B.S. 80N 180W	3:01	230	-70	160	
B.S. 80N 176W	3:03	220	-70	150	

LINE: 180 WEST
DATE: JULY 4, 1972

STATION	TIME	RDG	CORR.	CORR. RDG.	REMARKS
B.S.					
80N 176W	3:17	220	-70	150	
B.S. 80N 180W	3:23	240	-80	160	
180W 80N		230	-70	160	
79		230	-70	160	
78		300	-70	230	
77		210	-70	140	
76		200	-65	135	
75N		220	-65	155	
74		210	-65	145	
73		220	-65	155	
72		210	-60	150	
71		230	-60	170	
70N	3:31	230	-60	170	
69		220	-60	160	
68		260	-55	205	
67		280	-55	225	
66		330	-55	275	
65N		340	-55	285	
64		240	-50	190	
180W 63N		220	-50	170	

LINE : 180 WEST
DATE : JULY 4, 1972

LINE : 180 WEST
DATE : JULY 4, 1972

STATION	TIME	RDG.	CORR.	CORR RDG.	REMARKS	STATION	TIME	RDG.	CORR.	CORR RDG.	REMARKS
180W 62 N		220	-50	170		180W 39N		230	-20"	210	
61		280	-50	230		38		210	-20	190	
60 N	3:38	330	-45	285		37		140	-20	120	
59		365	-45	320		36		175	-15	160	
58		490	-45	445		35 N		220	-15	205	
57		650	-45	605		34		210	-15	195	
56		590	-40	550		33		220	-15	205	
55 N		420	-40	380		32		335	-10	325	
54		410	-40	370		31		480	-10	470	
53		280	-40	240		30 N	4:00	610	-10	600	
52		200	-35	165		29		640	-10	630	
51		180	-35	145	stream	28		560	-5	555	
50 N	3:45	160	-35	125	→ S.S.W	27		590	-5	585	
49		160	-35	125	50+15 N	26		155	-5	150	stream
48		220	-30	190							→ E 25+25 N
47		280	-30	250		B.S. 180W 25N	4:06	160	+15	175	→ W 25+80 N
46		300	-30	270		B.S. 184W 25N	4:08	70	-5	65	→ E
45		170	-30	140		B.S. 188W 25N	4:12	100	0	100	25+20 N
44		130	-25	105		B.S. 200 25N	4:18	-50	0	-50	→ S.W 25+10 N
43		140	-25	115							
42		150	-25	125							
41		120	-25	95							
180W 40N	3:53	170	-20	150							

LONE		WEST				LONE		WEST			
DATE		JULY 4, 1972				DATE		JULY 4, 1972			
STATION	TIME	RDG.	CORR	CORR RDG	REMARKS	STATION	TIME	RDG.	CORR	CORR. RDG.	REMARKS
B.S.											
200W 25N	4:18	-50	0	-50		38N 196W		250	-30	220	
26		340	0	340		38N 200W		6400	-40	6360	
27		320	0	320		38N 200:50		1050	-40	1010	
28		680	0	680		38N 201		-1100	-40	-1140	
29		-30	-5	-35		38N 201:50		-530	-45	-575	
200W 30N		-20	-5	-25		38N 202		120	-45	75	
31		120	-5	115		38N 202:50		230	-45	185	
32		80	-10	70		38N 203		100	-50	50	
33		520	-10	510		38N 203:50		0	-50	-50	
34		-230	-10	-240		38N 204W	4:43	0	-50	-50	
200W 35N		320	-15	305							
36		820	-15	805		B.S.					
37		510	-15	495		220W 72N	5:04	280	-80	200	
200W 38N		6400	-15	6385							
38N 197:50		2150	-20	2130							
38N 199:00		850	-20	830							
38N 198:50		90	-20	70							
38N 198:00		260	-25	235							
38N 197:50		180	-25	155							
38N 197:00		200	-25	175							
38N 196:50		100	-30	70							

STATION	LINE	184	WEST	CORR. RDG.	REMARKS	STATION	LINE	184	WEST	CORR. RDG.	REMARKS
	DATE	DATE	DATE				DATE	DATE	DATE		
		JULY 6,	1972					JULY 6,	1972		
B.S.											
220W 22N	8:27	240	-40	200		184N 110N	10:40	170	-40	130	
B.S.											
80N 212W	8:33	230	-95	135		109		170	-40	130	
B.S.											
80N 204W	8:37	220	-95	125		108		160	-40	120	
B.S.											
80N 200W	8:40	200	-80	120		107		175	-35	140	
B.S.											
80N 196W	8:43	220	-85	135		106		150	-35	115	
B.S.											
80N 192W	8:45	225	-90	135		105N		165	-35	130	
						104		150	-35	115	
						103		150	-35	115	
184W 125D	10:15	140	-50	90		102		140	-35	105	
124		145	-50	95		101		140	-30	110	
223		130	-50	80		100N	10:54	150	-30	120	
122		100	-50	50		99		180	-30	150	
121		630	-50	580		98		140	-30	110	
120N		190	-45	145		97		130	-30	100	
119		200	-45	155		96		125	-30	95	
118		60	-45	15		95N		130	-30	100	
117		190	-45	145		94		155	-30	125	
116		165	-45	120		93		145	-30	115	
115N	10:32	170	-45	125		92		140	-30	110	
114		160	-40	120		91		160	-30	130	
113		150	-40	110		90N	11:03	150	-25	125	
112		140	-40	100		89		140	-25	115	
184W 111N		130	-40	90		88N		150	-25	125	

STATION	LINE DATE		RDG.	CORR.	CORR. RDG.	REMARKS	LINE DATE		RDG.	CORR.	CORR. RDG.	REMARKS
	DATE	TIME					DATE	TIME				
184W 82D		184 WEST JULY 6, 1972	150	-25	125							
86			160	-25	135							
85			180	-25	155							
84			200	-25	175							
83			200	-25	175							
82			180	-25	155							
81			180	-25	155							
184W 80N	11:12		180	-25	155							
B.S. 20N 184W	11:13		185	-25	160							
B.S. 20N 192W	11:19		180	-45	135							
B.S. 20N 196W	11:22		155	-20	135							
B.S. 20N 200W	11:24		150	-30	120							
B.S. 20N 204W	11:26		150	-25	125							

STATION	LINE:	228	WEST	CORR. RDG.	REMARKS
	DATE:	JULY	8, 1972		
	TIME	RDG.	CORR.		
220W 72N	4:12	+230	-30	200	
220W 76N	4:15	200	-65	135	
80N 220N	4:18	230	-65	165	
80N 224W	4:21	260	-75	185	
80N 228W	4:24	220	-60	160	
228W 80N	4:25	240	-60	180	
81		240	-60	180	
82		240	-60	180	
83		250	-60	190	
84		250	-60	190	
85N		250	-60	190	
86		260	-60	200	
87		245	-60	185	
88		250	-60	190	
89		245	-60	185	
90N	4:32	260	-60	200	
91		240	-60	180	
92		245	-60	185	
93		260	-60	200	
94		245	-60	185	
95		240	-60	180	
228W 96W		240	-60	180	

STATION	LINE:	228+	236	WEST	CORP. RDG.	REMARKS
	DATE:	JULY	8,	1972		
	TIME	RDG.	CORR.			
228W 97N		230	-60	170		
98		240	-60	180		
99		230	-60	170		
100N	4:38	255	-60	195		
101		240	-60	180		
102		245	-60	185		
103		260	-60	200		
104		275	-60	215		
228W 105N	4:41	290	-60	230		
106		290	-60	230		
236W 105N	4:47	240	-60	180		
104		210	-60	150		
		310	-60	250		
103		530	-60	470		
		390	-60	330		
102		335	-60	275		
101		290	-60	230		
100N	4:53	250	-60	190		
99		230	-60	170		
98		225	-60	165		
97		220	-60	160		
236W 96N		220	-60	160		

LINE : 188 WEST		DATE : JULY 11, 1972		CORP RDG	REMARKS
STATION	TIME	RDG	CORR.		
B.S.					
25N 180W	11:37	130	+45	175	
B.S.					
25N 184W	11:40	20	+45	65	
B.S.					
25N 188W	11:43	60	+40	100	
188W 24N		80	+45	125	
23		130	+45	175	
22		220	+45	265	
21		150	+45	195	
20N		160	+45	205	
19		475	+45	540	
18		330	+45	375	
17		135	+45	180	
16		170	+45	215	
15N	11:50	160	+45	205	
14		185	+45	230	
13		170	+45	235	
12		240	+45	285	
11		200	+45	245	
10N		20	+45	+65	
9		110	+45	155	
8		150	+45	195	
7		120	+45	165	
188W 6N		20	+45	65	

LINE : 184 WEST		DATE : JULY 11, 1972		CORP RDG	REMARKS
STATION	TIME	RDG	CORR.		
188W 5N	11:58	220	+45	265	
B.S.					
25N 188W	12:08	60	+40	100	
B.S.					
25N 184W	12:10	20	+45	65	
184W 24N		100	+45	145	
23		135	+45	180	
22		175	+45	220	
21		140	+45	185	
20N		100	+40	140	
19		90	+40	130	
18	12:15	120	+40	160	
B.S.					
184W 25N	12:19	30	+35	65	
B.S.					
25N 180W	12:22	140	+35	175	

LINE: 220 WEST
 DATE: JULY 12, 1972

STATION	TIME	RDG	CORR.	CORR. RDG.
B.S. 220W 72N	10:02	220	-20	200
B.S. 220W 76N	10:04	180	-35	145
B.S. 80N 220W	10:07	210	-45	165
220W 95N	10:13	220	-50	170
96		215	-50	165
97		220	-50	170
98		220	-50	170
99		230	-50	180
100N		200	-55	145
101		230	-55	175
102		320	-55	265
103		330	-55	275
104		90	-55	35
220W 105N	10:21	130	-55	75
B.S. 80N 220W	10:31	230	-65	165
B.S. 220W 76N	10:34	200	-55	145

LINE : 218 WEST
 DATE : JULY 23, 1972

STATION	TIME	RDG	CORR	CORR RDG	REMARKS
B.S.					
220W 72N	9:17	75			
B.S.					
220W 76N	9:19	75			
B.S.					
80N 220W	9:22	120	+45	165	
B.S.					
80N 224W	9:25	130	+55	185	
B.S.					
80N 228W	9:27	110	+50	160	
B.S.					
80N 220W	9:30	120	+45	165	
218W 66N	9:45	180	+35	215	
65		190	+35	225	
64		120	+35	155	
63		130	+30	160	
62		140	+30	170	
61		210	+30	240	
60N		260	+35	295	
59		270	+35	305	
58		230	+35	265	
57		210	+30	240	
56		200	+30	230	
55N		220	+30	250	
54		170	+25	195	
53		260	+25	285	
218W 52N		260	+25	285	

LINE : 218 * 222 WEST
 DATE : JULY 23, 1972

STATION	TIME	RDG	CORR	CORR RDG	REMARKS
218W 31N		260	+20	280	
50N		250	+20	270	
49		260	+15	275	
48		250	+15	265	
47		240	+10	250	
46N		200	+10	210	
218W 45	10:06	230	+5	235	
228W 44N	10:11	260	-10	250	
45		270	-10	260	
46		260	-15	245	
47		275	-15	260	
48		280	-20	260	
49		270	-20	250	
50N		260	-25	235	
51		300	-25	275	
52		310	-30	280	
53		280	-30	250	
54		270	-35	235	
55N		360	-35	325	
56		400	-40	360	
57		730	-40	710	
222W 58N		360	-45	315	

LINE : 222 + 225 WEST		DATE : JULY 23, 1972		CORR		REMARKS
STATION	TIME	RDG.	CORR	CORR RDG.		
222W 59N		360	-45	315		
60N		350	-50	300		
61		300	-50	250		
62		360	-50	310		
63		360	-55	305		
64		340	-55	285		
65N		340	-55	285		
222W 66N	10:36	300	-60	240		
67		280	-60	220		
68N	10:38	260	-60	200		
B.S.						
80N 220W	10:45	240	-75	165		
B.S.						
80N 224W	10:47	270	-85	185		
B.S.						
86N 228W	10:49	240	-80	160		
226W 66N	10:55	300	-80	220		
65		300	-80	220		
64		330	-80	250		
63		340	-80	260		
62		370	-80	290		
61		340	-80	260		
226W 60N		340	-80	260		

LINE : 226 + 230 WEST		DATE : JULY 23, 1972		CORR		REMARKS
STATION	TIME	RDG.	CORR	CORR RDG.		
226W 59N		340	-80	260		
58		350	-80	270		
57		400	-80	320		
56	11:06	440	-80	360		
55N		530	-80	450		
54		465	-80	385		
53		400	-80	320		
52		395	-80	315		
51		300	-75	225		
50N		320	-75	255		
49		320	-75	255		
48		320	-75	255		
47		345	-75	270		
46		320	-75	255		
226W 45N	11:17	340	-75	265		
230W 45N	11:23	280	-75	205		
46		300	-75	225		
47		290	-75	215		
48		290	-75	215		
49		290	-75	215		
230W 50N		320	-75	255		

REIE : 230 WEST
 DATE : JULY 23, 1972

STATION	TIME	RDG.	CORR	CORR RDG.	REMARKS
230 W 51 N		330	-75	255	
52		390	-70	320	
53		400	-70	330	
54		370	-70	300	
55 N		340	-70	270	
56		370	-70	300	
57		330	-70	260	
58		340	-70	270	
59		320	-70	250	
60 N		360	-70	290	
61		360	-70	290	
62		400	-70	330	
63		350	-70	280	
64		310	-70	240	
65		290	-70	220	
230 W 66 N	11:45	270	-70	200	
B.S.					
80 N 228 W	11:51	230	-70	160	
B.S.					
80 N 224 W	11:54	260	-75	185	
B.S.					
80 N 220 W	11:56	230	-65	165	
B.S.					
220 W 70 N	11:58	220			
B.S.					
220 N 72 W	12:00	240			