

019509

~~PACIFIC
WATERPROOF~~

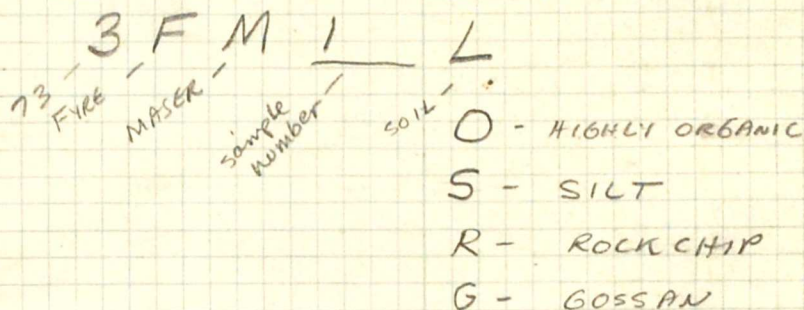
Mining Transit Book

~~FILE No. 321~~

~~FILE NO. 321~~
FIRE LAKE
PETER MASER
JUNE 1973
Pierre

NOTES:

① NUMBERING SYSTEM:



② THE FOLLOWING THINGS SHOULD BE RECORDED IN YOUR NOTEBOOK

(a) STN NUMBER when sampling on grid lines

(b) TOPOGRAPHIC FEATURES - CREEKS, SWAMPS, LAKES, PROMINENT ROCK OUTCROPS, TRENCHES, etc - anything THAT MIGHT SHOW UP ON AN AIR PHOTO

(c) GOSSANS OF ANY KIND - RUSTY SWAMPS OR SEEPS, ROCKS, SOIL, etc.

(d) ANY SIGN OF PREVIOUS ACTIVITY - SUCH AS FLAGGING, CLMPOSTS, CATROADS, CUT LINES.

Note
P.F = PERMA FROST

JUNE 5, 1973

- 3FM 2 at BL-ON
- 3FM 6 taken 75' N of 1000' N
on BL
- exposed side of hill.
- stopped at BL-3800 N
- 3FM-20

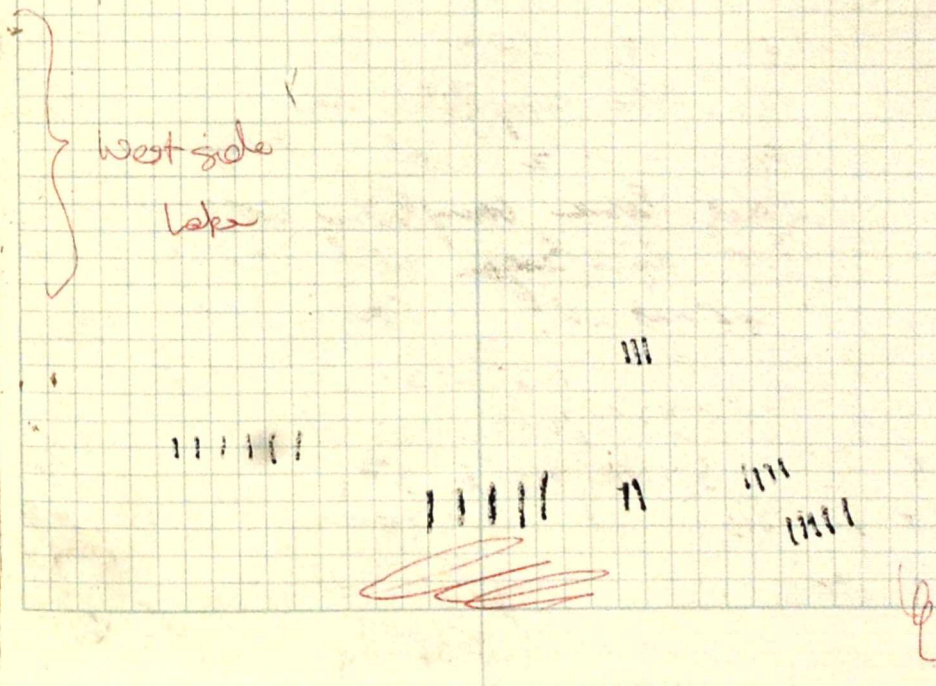
TO DATE: - 20 SAMPLES

JUNE 6 1973

- began at 3FM 21
- first line complete with 3FM 41
- began line 2 with 3FM-42
- 2nd line complete with 3FM-62
- 3rd line began with 3FM-63
- ended at 3FM-78

ORGANIC SAMPLES - WFG

22, 24	38, 39	41, 45	53, 55	63, 61	70, 76
28, 23	31, 30	44, 43	56, 57		75, 78
25, 21	34,	42,	59, 54		77,
29, 26			52, 50		
			58, 51		35



- completed: 21 to 78 inclusive
= 58 samples
-35
23

TO DATE: 20 + 23 = 46

JUNE 7

79 + 200N

80 + 200N

86 + 200N

87 + 200N

89 + 400N

99 + 200N

105 + 200N

106 - 200S, 400S, 600S

107 - 200S, 400S

109 - 200S

111 - 200S

118 - 200S, 400S, 600S

120 200S 400S

20

- resumed at 80

NINE
of Camp Creek

- to day - completed

128
78
50

- 79 to 127 inclusive
- 50 SAMPLES.

TO DATE: $50 + 46 = \underline{\underline{96}}$

JUNE 10 1973

- began at 00-2E - SAMPLE # 128

- NO SAMPLE

- P.F. + Moss +

- 00-4E # 129

- NO SAMPLE

- PF + ORGANIC

- finished 00 to 40E with # 147

- began 8N-40E with # 148

- finished 8N-0E with # 167

NOTE - Samples 8N-800E to 8N-40E
taken \approx 100-200ft S of paper
line due to snow

- began 16N - 2E with # 168

- creek at 16N - 850E -
- major creek with gossans.

- 16N - 30E - # 182
NO SAMPLE
- P.F. + ORGANIC

- 16N - 32E - # 183
NO SAMPLE
- P.F. + ORGANIC

16N - 34E - # 184
- NO SAMPLE
- P.F. + ORGANIC

- ended 16N with # 187

- began 24N - 40E with 188

- 24N - 30E - # 193
NO SAMPLE
P.F. + ORGANIC

- finished 24N with # 207
at 24N - 2E

- Completed

00 to 40 E

8N to 40 E

16 N " "

24 " " "

} 80 SAMPLES
- 6
= 74

TO DATE. 96 + 74 = 170

- tomorrow - 32 N, 40 N, 48 N, 56 N

{ - 32 N-40E on line to 40 N-40E

{ - 48 N-40E on line to 56 N-40E

- 40 or 48 W -

~~##~~

JUNE 11 1973

- began at BL - 40N - #208

- ended at BL - 58N - #217

- began - 56N-2E with #218

- 56N-10E #222

NO SAMPLE - P.F. - v. wet area

56N - 24E - #229
NO SAMPLE
P.F. - v. wet.

56N - 30E #232
NO SAMPLE
P.F. - v. wet

56N - 34E #234
NO SAMPLE
P.F. - v. wet.

56N - 36E - #235
NO SAMPLE
P.F. - frozen layer
of volcanic ash.

- ended 56N - 40E with #237

- began 48N - 40E with #238

- 48N - 38E #239
NO SAMPLE
P.F. + ORGANIC

- 48N-26E # 245

NO SAMPLE

- V wet - organic

- some P.F.

- ended 48N-2E with #257

- began 32N-2E with #258

- 32N-18E #266

- NO SAMPLE

- large wet meadow

- 32N-20E #267

- same meadow

NO SAMPLE

- 32N-22E #268

- NO SAMPLE

- same meadow

- 32N-24E - #269

- NO SAMPLE

- edge of meadow

- V. wet.

- finished 32N - 40E with # 277

- began - 40N - 40E with # 278

- 40N - 38E # 279

NO SAMPLE

- spruce forest

- P.F. - v. wet.

- ended 40N - 2E with # 297

- started 48N - 2W with # 298

- 48N - 18W - # 306

NO SAMPLE

PF + Volcanic ash.

- ended at 48N - 22W - # 308

Completed today

BL to 5800 N (inclusive)

32 N to 40 E

40 N " "

48 N " "

56 " "

48 N to 22 W

10.

20

20

20

20

11

101

-13

- samples collected = 88

TO DATE : 170

88

258

- tomorrow:

64N to 40E]	20	2
72N to 40E]	20	
80N to 12E]	6	1
88N to 14E]	7	
96N to 16E]	8	1
104 to 22E]	11	
112 to 28E]	14	
120N to 30E]	15	1
		<u>101</u>	

JUNE 12 1973

- began at 64N-2E with # 309

- 64N-12E- #314
NO SAMPLE

- large meadow - bog.

- ~~64N~~ 64N-14E #315
NO SAMPLE
- same bog

64N-16E # 316

- NO SAMPLE

64N-20E - # 318

NO SAMPLE.

- v. wet - drainage area

- 64N-22E - # 319

NO SAMPLE

- v. wet

- v. thick moss & humus

64N-26E # 321

NO SAMPLE

v. wet

- deep moss & humus layer

64N-32E # 324

- PF & humus layer

- NO SAMPLE

64N-34E - # 325

- NO SAMPLE

- swampy - deep moss

- ended 64N-40E with # 328

- began - 72N - 40E with #329

- 72N - 30E #334

- NO SAMPLE

P.F. - moss + humus

- 72N - 16E #341

- NO SAMPLE

- large meadow

- deep moss + P.F.

- 72N - 19E - #342

- NO SAMPLE

- Creek

72N - 10E - #344

- NO SAMPLE

- v. wet willow thicket

- deep moss - P.F.

72N - 8E - #345

- NO SAMPLE

- moss + P.F.

- north-facing slope

72N-6E # 346

NO SAMPLE

- PF + deep mow

- completed 72N-2E with #348

- began 80N-2E with #349

- ended 80N-12E with #354

- began 88N-14E with #355

- ended 88N-2E with #361

- began 96N-2E with #362

- ended 96N-16E with #369

- began 104N-22E with #370

- ended 104N-2E with #380

- began 120N-2E with #381

- 120 N - 24 E #392

- NO SAMPLE

- MOSS + P.F

- north-facing slope

- ended 120 N - 30 E with #395

- began 112 N - 28 E with #396

- ended 112 N - 2 E with #409

- Completed today

64 N to 40 E

72 N to 40 E

80 " 12

88 " 14

96 " 16

104 " 22

112 to 28 E

120 " 30 E

- Samples = 101 - 15 = 86

Samples to date - 258

86
(344)

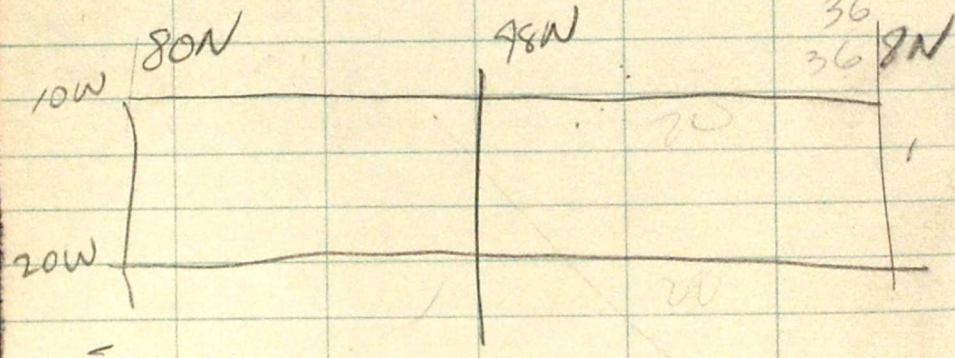
- tomorrow

✓ 0 -									
800	-	22W	-11	64	28W	-14			
16	-	22W	-11	72	32W	-16			
24				80	35W	17			
32	-	28	-14	88	35W	=17			
40	-	28W	-14	96	35	-17			
✓ 48	-	22		104	35	17			
				112	30	15			
				120	30	17.5			
									70

- begin at 48 N - 10W

- sample to 8N - 10W

- down to 8N - 20W & back. 7200



JUNE 13 1973

- began 200' S of 48^{N-10W} with #410

- #411 taken 100' S of 410 - seepage

- #413 taken at 40N-10W

- #417 taken at 32N-10W

#419 taken 100' S of 418

" " 300' S of 417

425 - 16 N-10W

NO SAMPLE

- v. deep moss + P.F

#426 NO SAMPLE

#427 + 428 " S.

#429 TAKEN at 8N-10W

- ~~424~~

- from 800 N 10W to 16 N-20W

NO SAMPLES

- v. flat, wet area

- deep moss - some P.F

16N-32W on 20W
NO SAMPLES

- 32N-20W - #430

- 40N-20W - #431

- #432 taken 75' N of #431

#434 taken 200' S of 48N-20W

- SAMPLES = 25 - 4 (21)

- SAMPLE #435 taken 200' N of
48N-10W'

#436 taken 20' N of Creek flowing
West down to Lake.

- #438 taken at 56N-10W

#442 taken at 64N-10W

#446 taken at 72N-10W

- 80N - 10W -

NO SAMPLE

- large snow patch

- run-off area

- v. wet - moss.

#450 - taken 100' S of 80N -
20W

#451 taken at 72N - 20W

#452 taken at 64N - 20W

#453 taken 100' N of 454

#454 taken at 56N - 20W

#456 taken 50' N of Creek flowing
W into Lake

#457 taken 200' N of 48N - 10W

- TODAY - completed lines from
8N to 80N

- SAMPLES taken = 44

SAMPLES to DATE = 344 + 44 = 388

JUNE 14 1973

- began 120 N - 2 W with # 458

- 120 N - 6 W #460

NOSAMPLE

- v. wet + P.F

120 N - 12 W - #463

NOSAMPLE

P.F + Moss

- Northerly - facing slope

120 N - 18 W - #466

NOSAMPLE

- thick moss + PF

- 120 N - 20 W - ~~467~~

NOSAMPLE

- moss + PF

- 120 N - 22 W ~~468~~

NOSAMPLE

- moss + PF

Northerly facing slope

- 120N - 24W
NO SAMPLE

- 120N - 26W
NO SAMPLE

- 120N - 28W
NO SAMPLE

- 120N - 30W
NO SAMPLE

- ~~26~~ - began at 112N - 30W with
#466

- 112N - 28W #467
- NO SAMPLE
- MOSS + P.F.

112N - 22W #470
NO SAMPLE

112N - 20W #471
NO SAMPLE

NORTH - FACINGS -
MOSS +
P.F. -
thick

^{at}
- ended 112N-20W with #480

- began - 96N-2W with #481

- 96N-8W #484
NO SAMPLE

- 96N-10W - #485
NO SAMPLE

96N-12W - #486
NO SAMPLE

96N-14W #487
NO SAMPLE

96N-16W #488
NO SAMPLE

96N-20W #490
NO SAMPLE

96N-22W - 491
NO SAMPLE

- line 96N runs almost
parallel to small sloping
bay - v. deep moors - v. wet

North facing
slope P.T.
& deep moors

96N-34W

~~#~~

- NO SAMPLE

- began at 104N-34W
with #497

- ended 104N-2W with #513

- began 88N-2W ~~with #514~~
NO SAMPLE

88N-4W

NO SAMPLE

88N-6W

NO SAMPLE

88N-8W = #514

88N-12W #516

NO SAMPLE

88N-14W

~~NO SAMPLE~~ #517

✓ 88N - 16, 18, 20, 22 W
NO SAMPLES

88N - 24 W
- NO SAMPLE

✓ 88N - 26 W - SAMPLE 518

✓ 88N - 28 W - NO SAMPLE

✓ 88N - 30 W # 519

✓ 88N - 32 W # 520

88N - 34 W - NO SAMPLE

520 - SAMPLES - 50

457

63 TO DATE . - 388

50
438

ARTIC.
PACIFIC
WATERPROOF

Mining Transit Book

FILLER No. 321

*Noli Urinare
Contre Ventum.*

GDDLIN PROJECT

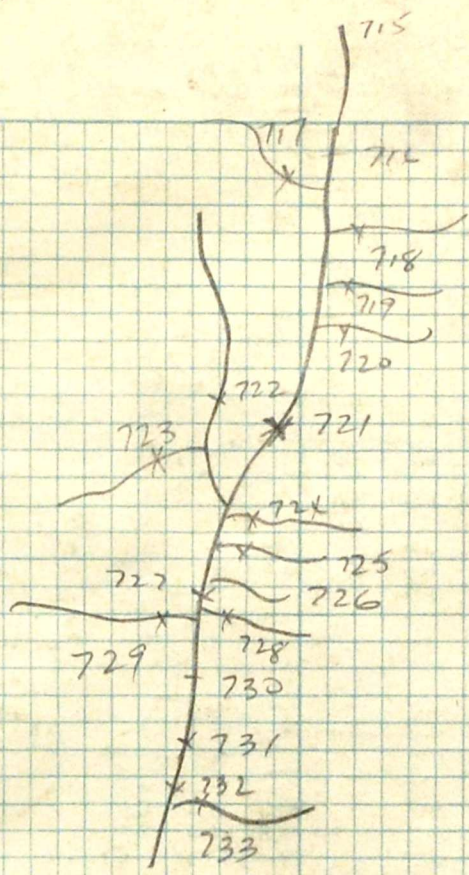
PETER MASER

JULY 1973

Pierre

BOOK IV

MAP OF
FUBAR
AREA



GOODWIN LAKES AREA

- JULY 9, 1973

- samples to date: 687
TRAVERSE # 26

- began traverse with # 688
- ended with # 714

today: 27

to date 714

JULY 10, 1973

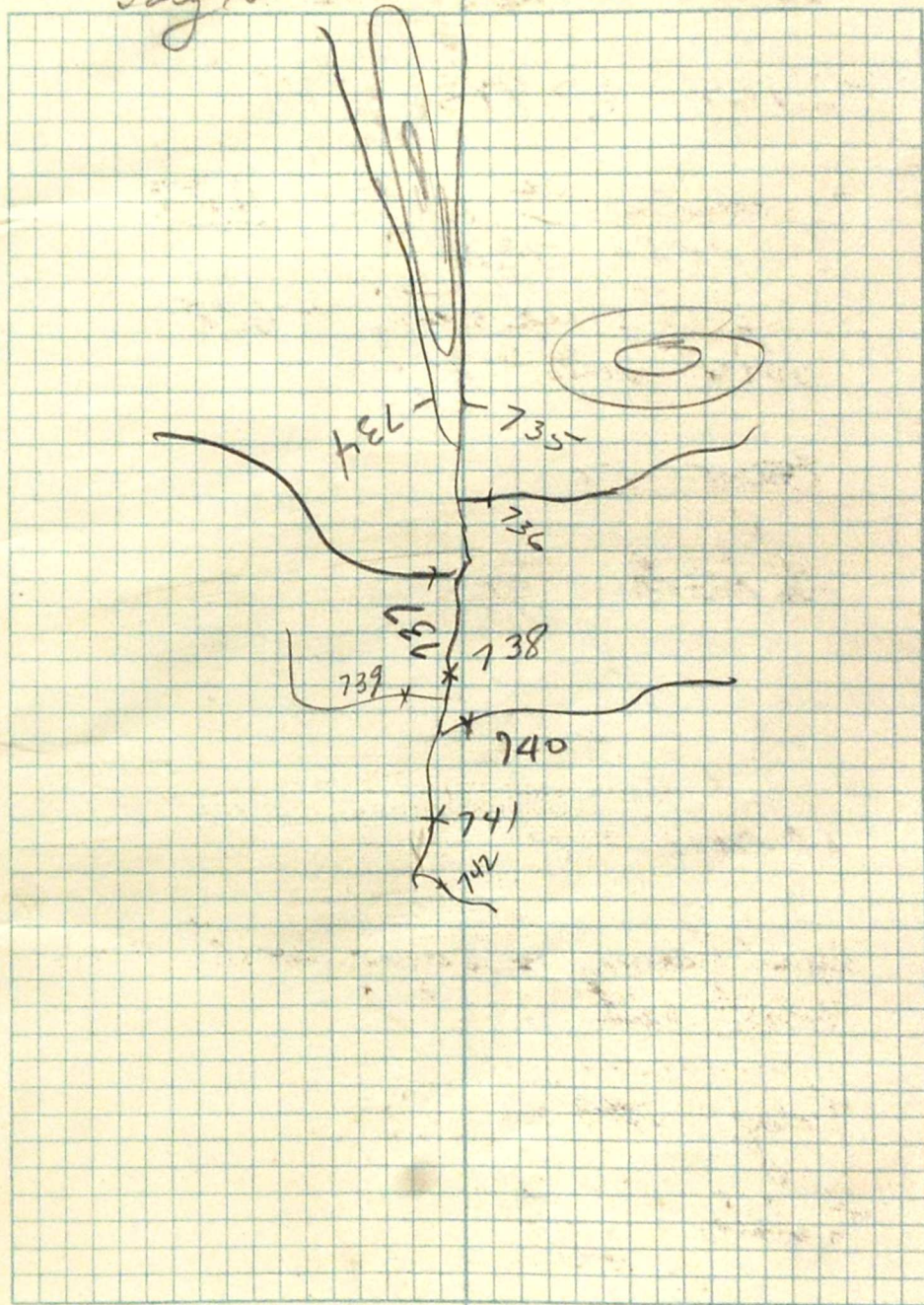
TRAVERSE # 29

- began traverse in surge with # 715
- ended with 742

today: ~~28~~ 29

to date: 742³

July 10



- July 11, 1973

- day of unsuccessful chopper hopping

- 9 samples

- to date: 752

- July 12, 1973

- traverse # 33

- began with # 753 - taken
just above gossan

- gossan fr \approx 100 yds down
creek bed

- # 754 taken at downstream edge
of gossan

- ended traverse with # 784

- to day - 22

to date 784

JULY 13 1973

TRAVERSE # 35

- began with # 785
- ended with 829

to day : 44

to date 829

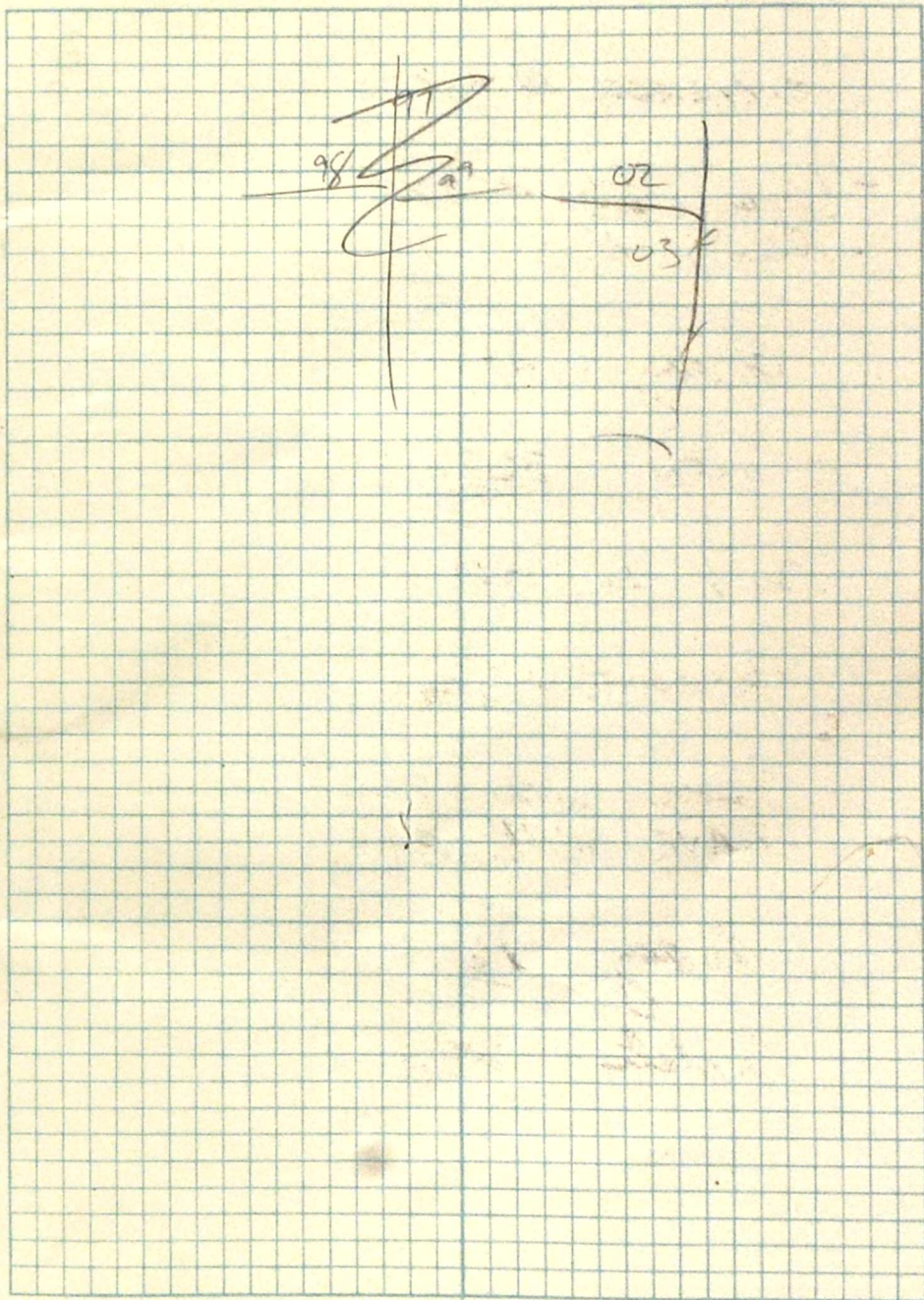
JULY 14 1973

- TRAVERSE # 42

- began with 830
- ended with 845

to day 16

to date 845



JULY 15, 1973

- Traverse #45

- began with # 846
- ended reef with 869
- began chopper topping with 870
- ended " " " 881

today: 36

to date 881

JULY 16, 1973

TRAVERSE #50

- began with # 882
- ended " # 917

today: 36

to date: 917

50

drop
limestone
shale
995
gossan - all
shale.

July 20

TRAVERSE #56

- began with sample # 1025

- ended with " 1064

to day - 41

to date: 1065

- JULY 25

TRAVERSE # 62

- began with sample # 1066

- ended " " " 1092

Today: 27

to date 1092

July 26

- Traverse #69
- began with sample # 1093
- ended " " " 1160

to day 68

to date 1160

JULY 27

- TRAVERSE # 67

- began with sample # 1161
- ended with " " ~~1161~~ 1190

- today : 30

to date 1190

- July 28

- Hopper Chopping.

- began - # 1191
 - ended # 1268
- } NO SAMPLE # 1260

today : 78

to date - 1268

July 29

TRAVERSE # 70

- began with # 1269
- ended " # 1348

- today 80

- to date 1348

1348
1269
80

July 31

TRAVERSE # 72

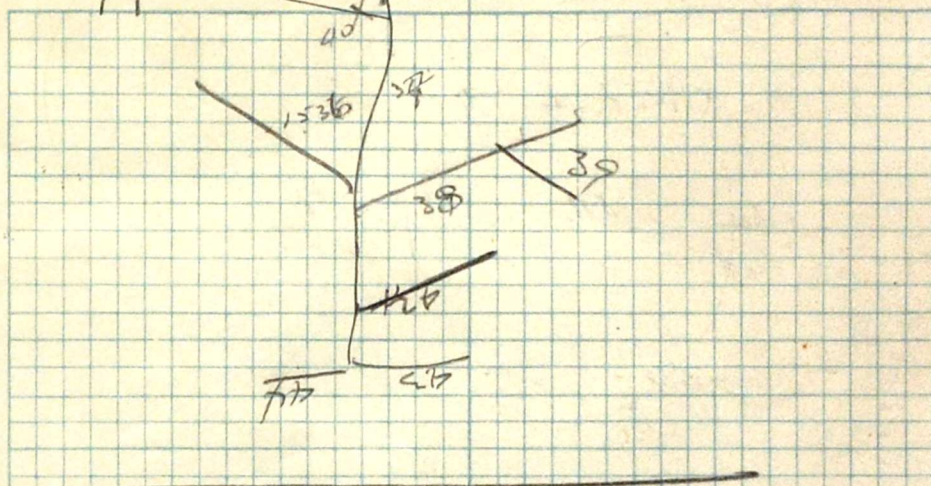
- began with # 1349
- ended " 1468

today: 120

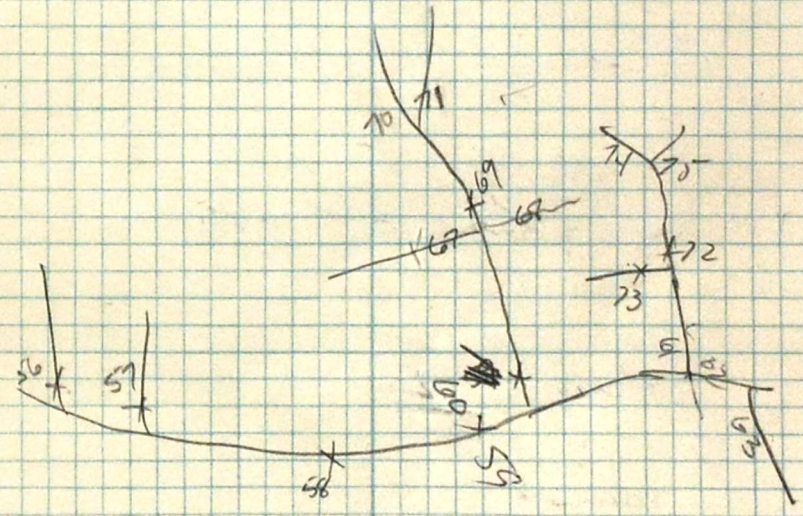
to date: 1468

Aug 6

'A'



'D'



August 4 1973

TRAVERSE # 74

- began with # 1469
- ended with # 1535

to day - 67 SAMPLES
to date - 1535

August 6

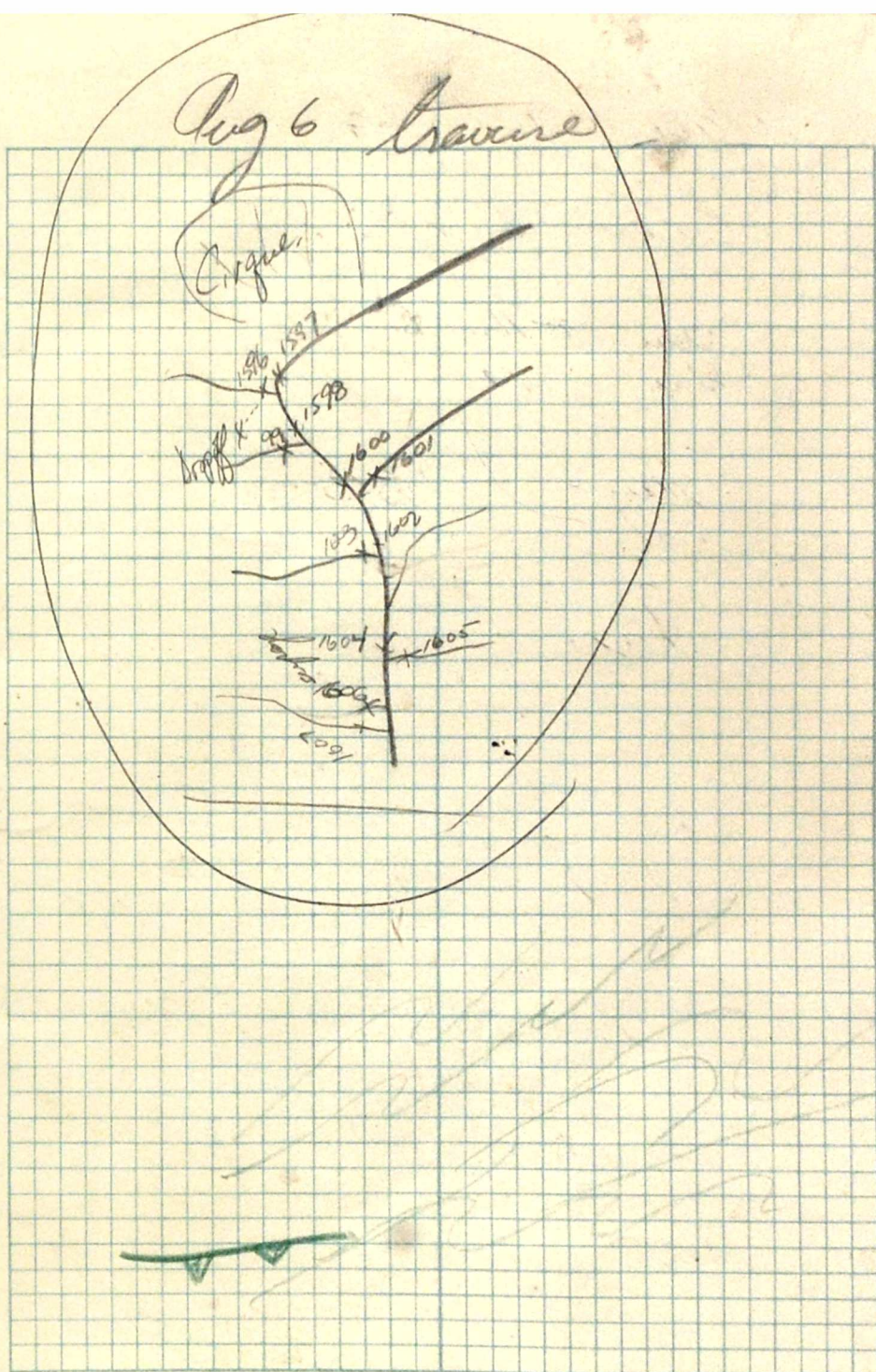
- Chopper Hopping

- began # 1536
- ended hopping # 1595

- began traverse - # 1596
- ended - # 1607

to day: 12

to date: 1607



August 7 1973.

Chopper Hopping.

- began #1608
- ended - 1745

today - 138

to date - 1745

Aug 8 1973 .

TRAV # 79

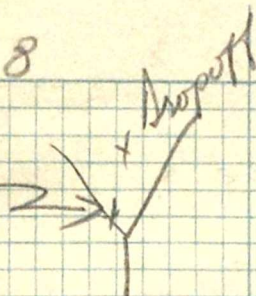
- began - 1745
- ended - 1776

today - 31

to date - 1776

Aug 8

Enemy
Flagging
TO 4691



Aug 9 1973

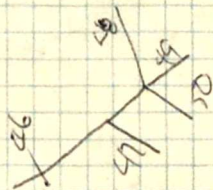
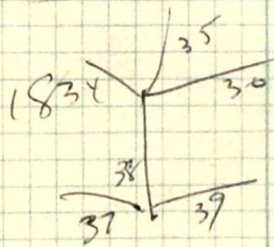
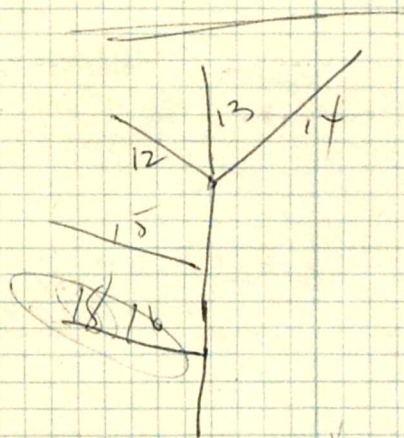
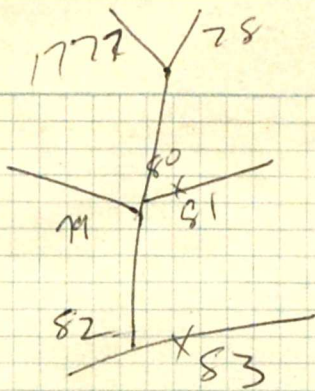
Chopper Logging.

- began # 1777

- ended - # 1918

Today - 142

to date - 1918



Aug 10 1973

- frame # 82

- began with # 1919

- ended " # 1971

today: 53

to date 1971

Aug 11 1973

Chopper # 82

began - 1972

- ended 3GP-82

today 111

to date - 2082

177
52
92
Aug 14 - 1973

Chopper Traverse.

- began 3 EP - 83

- ended - 177

today 92

to date: 2,177

Aug 15 1973

Chopper Hop

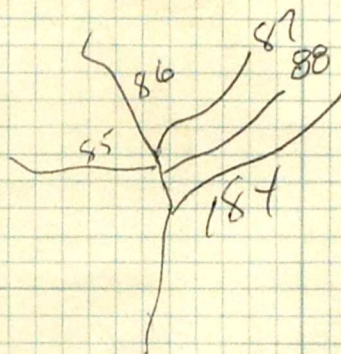
- began # 178

Sales

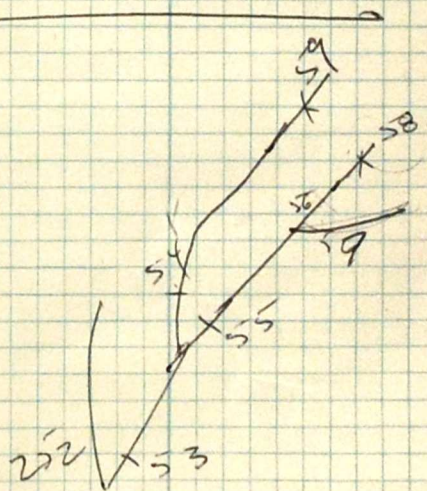
ECON #1 → 12

M Vetterli

A



B



today

111

today

2,288