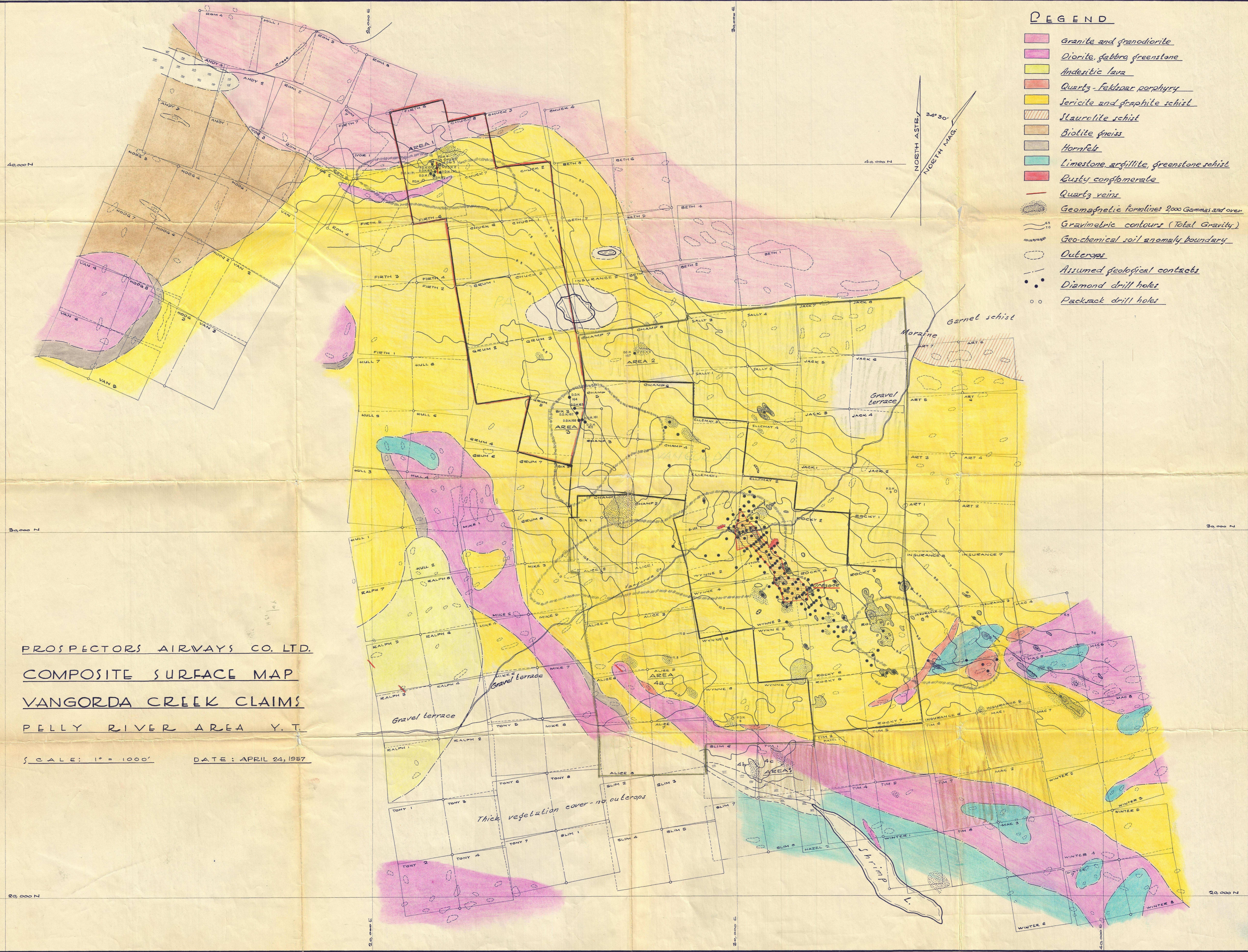
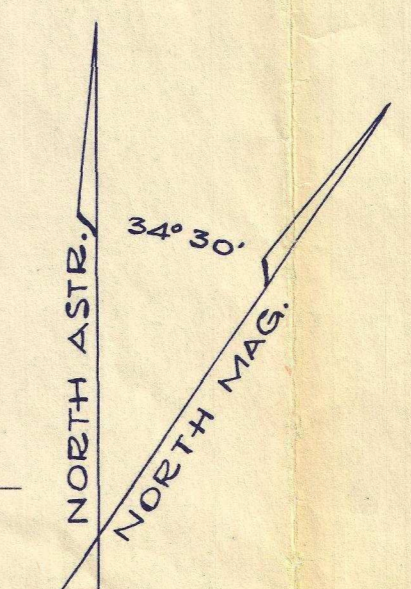


LEGEND

- Granite and granodiorite
- Diorite, gabbro, greenstone
- Andesitic lava
- Quartz-feldspar porphyry
- Sericite and graphite schist
- Staurolite schist
- Biotite gneiss
- Hornfels
- Limestone, argillite, greenstone schist
- Rusty conglomerate
- Quartz veins
- Geomagnetic formlines 2000 Gammas and over
- Gravimetric contours (Total Gravity)
- Geo-chemical soil anomaly boundary
- Outcrops
- Assumed geological contacts
- Diamond drill holes
- Packback drill holes



PROSPECTORS AIRWAYS CO. LTD.
 COMPOSITE SURFACE MAP
 VANGORDA CREEK CLAIMS
 PELLY RIVER AREA Y.T.

SCALE: 1" = 1000' DATE: APRIL 24, 1957

Thick vegetation cover - no outcrops