

```
*****
*
*   C Y P R U S   A N V I L   M I N I N G   C O R P O R A T I O N   *
*
*****
*
*           SYSTEM = DDHDB
*           PROGRAM = DH025
*
*           THU, FEB 24, 1983,  2:25 PM
*
*****
*
*           CALCULATION OF CROSS-SECTION COORDINATES
*           FROM A BASE-LINE, LEFT- AND RIGHT-OFFSETS,
*           AND A DISTANCE TO THE INTERSECTION POINT.
*
*****
```

GENERATION OF CROSS-SECTION LIMITS FROM A BASE-LINE  
 =====

	----- POINT-1 -----		----- POINT-2 -----	
	NORTHING	EASTING	NORTHING	EASTING
BASE-LINE COORDINATES =	6903166.54	594175.27	6895711.78	600840.62
LEFT OFFSET =	180.00			
RIGHT OFFSET =	180.00			

-----  
 CALCULATED CROSS-SECTION LIMITS  
 -----

CROSS-SECTION	DISTANCE	----- POINT-L -----		----- POINT-R -----	
		NORTHING	EASTING	NORTHING	EASTING
2W	-426.72	6903604.63	594025.03	6903364.67	593756.66
00	-365.76	6903559.18	594065.66	6903319.23	593797.29
2E	-304.80	6903513.74	594106.30	6903273.78	593837.93
4E	-243.84	6903468.29	594146.93	6903228.34	593878.56
6E	-182.88	6903422.85	594187.56	6903182.90	593919.19
8E	-121.92	6903377.40	594228.19	6903137.45	593959.82
10E	-60.96	6903331.96	594268.82	6903092.01	594000.45
12E	.00	6903286.52	594309.46	6903046.56	594041.08
14E	60.96	6903241.07	594350.09	6903001.12	594081.72
16E	121.92	6903195.63	594390.72	6902955.68	594122.35
18E	182.88	6903150.18	594431.35	6902910.23	594162.98
20E	243.84	6903104.74	594471.98	6902864.79	594203.61
22E	304.80	6903059.30	594512.61	6902819.34	594244.24
24E	365.76	6903013.85	594553.25	6902773.90	594284.88
26E	426.72	6902968.41	594593.88	6902728.45	594325.51
28E	487.68	6902922.96	594634.51	6902683.01	594366.14

*Point-2*      *Point-1*

VAN GORDA

Vangorda Deposit

019681

Property Master.

UTM. N.

MIN. 6 902 500 N

MAX. 6 903 750 N

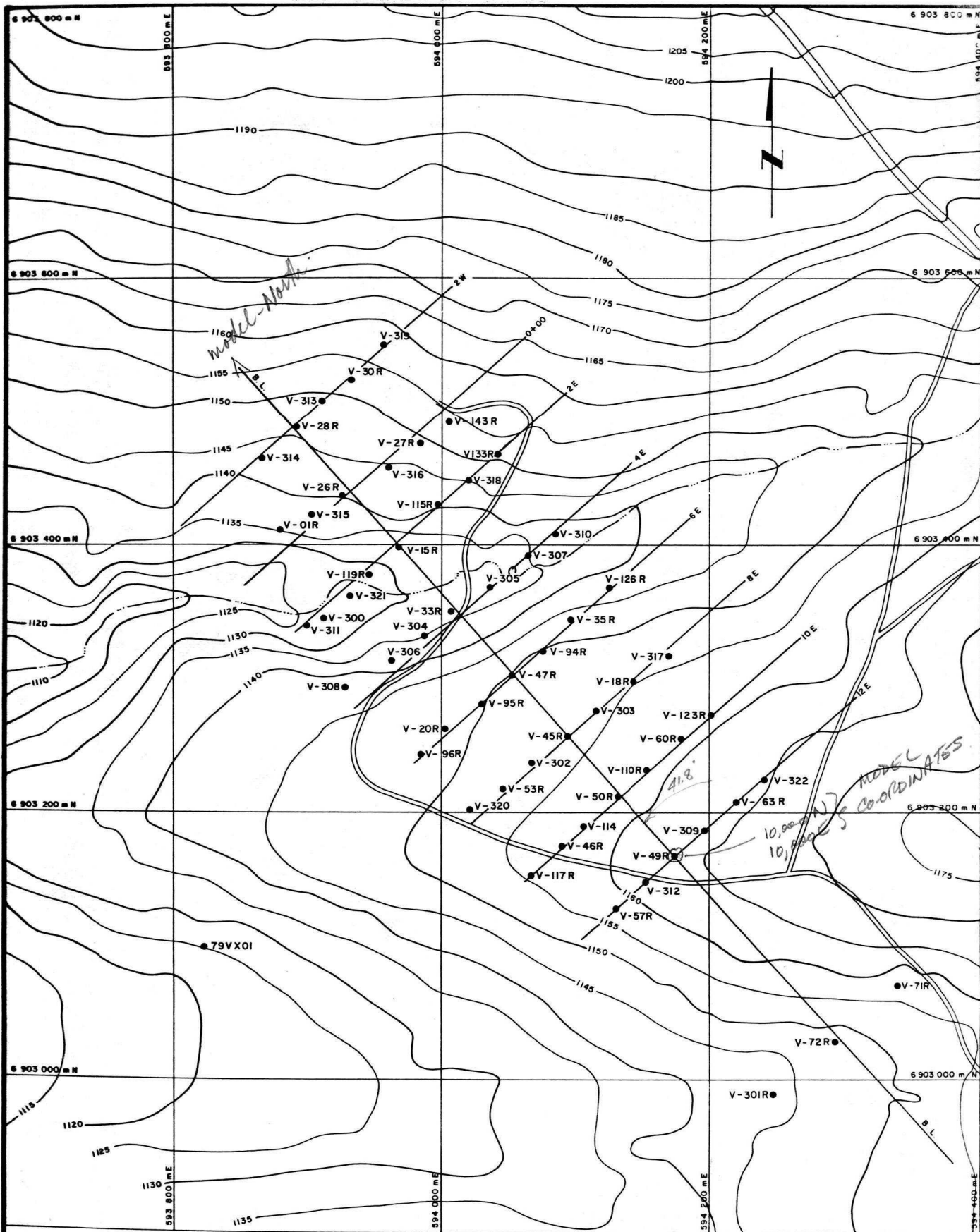
UTM. E.

MIN. 593 500 E

Max. 594 800 E

UTM ZONE 8

UTM TO TRUE NORTH  $1^{\circ} 36' 13''$



VANGORDA DEPOSIT  
D.D.H. PLAN



March 1980 P.T. / c.l.c.

ICAS  
Software  
Services

Systems: <sup>VANGORCA</sup> IDHDE  
Routine: DH025  
By: J.M.-L.

Project: FB3001  
Date: 24.2.83  
Page: 1 of 1

VANGORCA CROSS-SECTION COORDINATES

<u>BASE-LINE CO-ORDINATES</u>		<u>NORTHING</u>	<u>EASTING</u>
	① V-49R	6,903,166.54	594,175.27
	② BASE-I	6,895,711.78	600,840.62
OFFSET - LEFT = 180			
OFFSET - RIGHT = 180			
<u>SECTION</u>	<u>DISTANCE FROM V-49R</u>	<u>Nº of Panels To PLOT.</u>	
2 W	-426.72	1	
00	-365.76	1	
2 E	-304.80	1	
4 E	-243.84	1	
6 E	-182.88	1	
8 E	-121.92	1	
10 E	-60.96	1	
12 E	0.00	1	
14 E	60.96	1	
16 E	121.92	1	
18 E	182.88	1	
20 E	243.84	1	
22 E	304.80	1	
24 E	365.76	1	
26 E	426.72	1	
28 E	487.68	1	

ICAS  
Software  
Services

Systems: VANGORDA  
          DDHDE  
Routine: JH025  
By: J.M.-L.

Project: PB3001  
Date: 24.2.83  
Page: 1 of 1

VANGORDA CROSS-SECTION COORDINATES

BASE-LINE CO-ORDINATES		NORTHING	EASTING
	@ V-49R	6,903,166.54	594,175.27
	@ BASE-1	6,895,711.78	600,840.62
OFFSET- LEFT = 180			
OFFSET- RIGHT = 180			
SECTION	DISTANCE FROM V-49R		
2 W	-426.72		
00	-365.76		
2 E	-304.80		
4 E	-243.84		
6 E	-182.88		
8 E	-121.92		
10 E	-60.96		
12 E	0.00		
14 E	60.96		
16 E	121.92		
18 E	182.88		
20 E	243.84		
22 E	304.80		
24 E	365.76		
26 E	426.72		
28 E	487.68		