

8 Aug 1975

019742

Sta	1965	1975	Δ
ABL 104W	540	1484	944
CBL 105W	545	1515	970
" 106W	570	1546	976
" 107W	545	1527	982
" 108W	550	1528	978
" 109W	595	1549	954
" 110W	605	1530	925
" 111W	610	1511	901
" 112W	670	1552	882
" 113W	670	1533	863
" 114W	620	1514	894
" 115W	600	1520	920
" 116W	595	1546	951
" 117W	605	1537	932
" 118W	590	1523	933
" 119W	610	1549	939
" 120W	575	1510	935
" 121W	570	1499	929
" 122W	565	1499	934
" 123W	605	1498	893
" 124W	610	1508	898
" 125W	620	1507	887
" 126W	610	1507	897
" 127W	640	1506	866
" 128W	580	1506	926
" 129W	585	1506	921
" 130W	605	1505	900
" 131W	600	1504	904
" 132W	590	1516	926

Σ 922.76

Σ 32.03

n = 29

<u>STA</u>		<u>Y 1965</u>	<u>X 1975</u>	<u>Z</u>
L 124W	1N	610	1517	907
- " -	2N	620	1517	897
- " -	3N	640	1516	876
- " -	4N	630	1516	886
- " -	5N	650	1535	885
			\bar{x}	917
			σ	32.01
			n =	34

128W	1N	595	1521	926
- " -	2N	630	1520	890
- " -	3N	635	1510	875
- " -	4N	660	1530	870
- " -	5N	660	1530	870
			\bar{x}	913
			σ	32.63
			n =	39

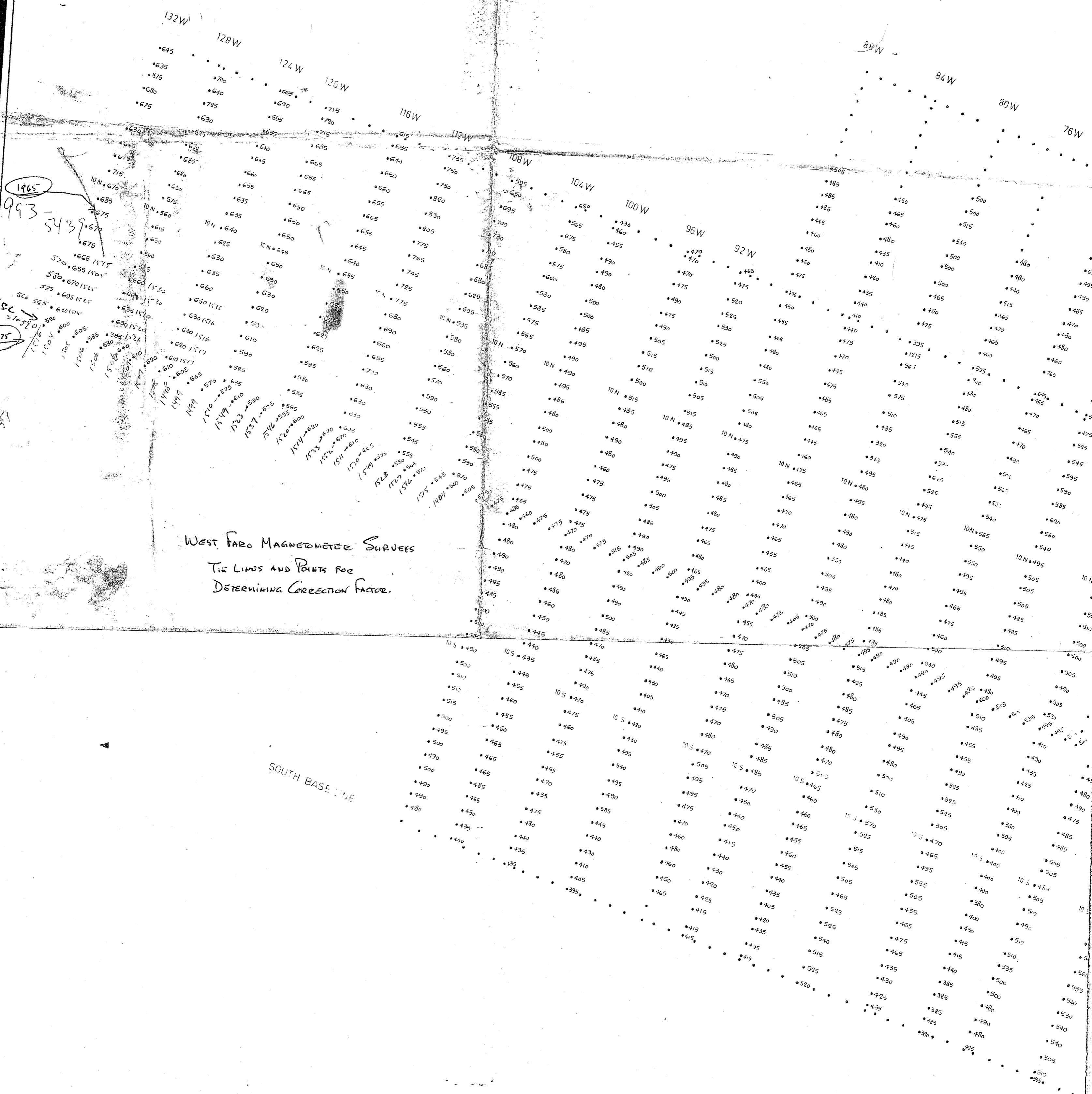
132W	1N	640	1515	875
- " -	2N	695	1525	830
- " -	3N	670	1525	855
- " -	4N	655	1505	850
- " -	5N	665	1515	850
			\bar{x}	906.86
			σ	36.88
			n =	44

(-913)

~~+138~~

FOR CORRECTION of 1975 values to 1965 values

- 1.) Subtract 907 from 1975 values
- 2.) Final values will have a precision of $\pm 37\%$
- 3.) So the contouring of about 50% would be the minimum interval for contouring. 100% contours would probably be more meaningful.



WEST FARD MAGNETIC SURVEYS
 TIE LINES AND POINTS FOR
 DETERMINING CORRECTION FACTOR.

SOUTH BASE LINE

1965
 993-5439
 1975
 CSC