

019744

A REPORT

ON

A GRAVITY SURVEY

Anvil Area, Whitehorse M.D.

Yukon Territory

FOR

CYPRUS ANVIL MINING CORPORATION

Vancouver, British Columbia

BY

PETER E. WALCOTT & ASSOCIATES LIMITED

Vancouver, British Columbia

NOVEMBER 1976

TABLE OF CONTENTS

	<u>Page</u>
INTRODUCTION	1
PROPERTY, LOCATION AND ACCESS	2
PREVIOUS WORK	3
PURPOSE	4
GEOLOGY	5
SURVEY SPECIFICATIONS & PROCEDURES	6
DISCUSSION OF RESULTS	7
SUMMARY, CONCLUSIONS & RECOMMENDATIONS	8

APPENDIX

COST OF SERVICES	i
PERSONNEL EMPLOYED ON SURVEY	ii
CERTIFICATION	iii
CLAIM LOCATION MAP	
CLAIM AND GRID LOCATION MAP	

ACCOMPANYING MAPS - Scale 1" = 400'

MAP POCKET

CONTOURS OF SURFACE ELEVATION	W-200-1
CONTOURS OF BOUGUER GRAVITY	W-200-2

INTRODUCTION

Between July 30th and October 10th, 1975, Peter E. Walcott & Associates Limited carried out a gravity survey over a part of the Faro claim group, referred to as the West Faro Grid, for Cyprus Anvil Mining Corporation.

The survey was carried out over N 20° W handcut lines 800 feet apart which were turned off at right angles from a N 70° E baseline, and which were chained and picketed at 100 foot intervals.

Measurements of relative gravity were made every 100 feet along the picket lines using a CG-2 gravity meter. In addition elevations at each of the gravity stations were obtained using a Sokkisha TM-20C theodolite and rod.

The data was then processed and presented in contour form on Maps W-200-1 and 2 that accompany this report.

PROPERTY, LOCATION AND ACCESS

The property is located in the Whitehorse Mining District of the Yukon Territory.

The Anvil Mine of Cyprus Anvil Mining Corporation is situated on the property, and that part of the property surveyed lies to the west of the mine.

The claims over which the survey was conducted are as follows:

<u>Claim Name</u>	<u>Record No.</u>	<u>Expiry Date</u>
FARO 47	92233	July 1, 1987
49	92235	"
51	92237	"
71 - 83	92359 - 71	"
85	92373	"
89 - 96	92453 - 60	"
39 - 112	92463 - 76	"
114- 122	92478 - 86	"
149- 150	92513 - 14	"
151- 156	92551 - 56	"
169 - 172	92527 - 30	"

Access was obtained by means of a gravel road that traverses the southern part of the claim block from a starting point in the mill yard.

PREVIOUS WORK.

Previous work on that part of the property surveyed consisted of airborne electromagnetic and magnetic work, geochemical soil sampling, prospecting, as well as rotary and diamond drill hole investigation.

The results of the above are well documented in reports held by Cyprus Anvil Mining Corporation.

PURPOSE

The purpose of the survey was to try and locate by the gravimetric method the presence of any mineralized deposits.

It was anticipated that a typical deposit of the area should give an anomaly of 0.5 milligals or better providing it was located within 600 feet of surface.

GEOLOGY

The reader is referred to geological reports by the staff of Cyprus Anvil Mining Corporation.

SURVEY SPECIFICATIONS AND PROCEDURES

The gravity survey was carried out using a Scintrex CG-2 gravity meter, which measures variations in the earth's gravitational field to an accuracy of ± 0.01 milligals.

Values of observed gravity were obtained every 100 feet along the picket lines. Corrections for meter drift were made by tying-in to previously established base stations at intervals not exceeding 2 to 3 hours. Drifts of over 0.10 milligals per hour were not allowable.

The elevations of the gravity stations were determined by rod and transit (Sokkisha TM-20C theodolite) using the stadia method. Errors in the tying-in of loops were kept to a minimal, and did not exceed 0.5 feet per loop.

Corrections were then applied to the observed gravity values for differences in elevation, using a density of 2.6 gm/cc, and latitude.

The final Bouguer gravity values were then plotted and ^{→ 2.7 on maps} contoured.

In all 34.4 miles of gravity surveying were completed.

DISCUSSION OF RESULTS.

Since this survey is part of the whole gravity survey package that the writer is attempting to compile a discussion of the results for this particular grid is not warranted until all the gravity data has been reduced to a common base, a regional established, and an overall residual map compiled.

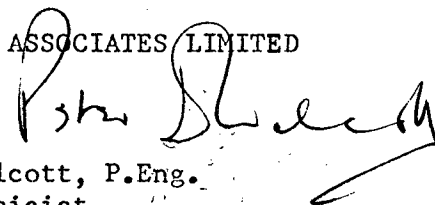
SUMMARY, CONCLUSIONS AND RECOMMENDATIONS.

Between July 30th and October 10th, 1975 Peter E. Walcott & Associates Limited carried out a gravity survey over that part of the Faro claim block of Cyprus Anvil Mining Corporation referred to as the West Faro Grid.

As this work was an extension of previously conducted gravity surveys over and/or around the known Faro deposits the writer concluded that it is not appropriate at this time to compile a residual map based on this data alone, but recommends that the construction of such be held in abeyance until such time as he can tie and/or attempt to tie together the rest of the surveys around the mine for the purpose of constructing a common regional gravity map and thus a common residual gravity map. It should be noted here for the sake of clarification that most of these original surveys have used different starting elevations and different densities for data reduction and thus are not congruent with each other in their present state.

Respectfully submitted,

PETER E. WALCOTT & ASSOCIATES LIMITED



Peter E. Walcott, P.Eng.
Geophysicist

Vancouver, B.C.

November 1976

A P P E N D I X

=====

COST OF SURVEY.

Peter E. Walcott & Associates Limited undertook the survey on a daily basis. Mobilization and draughting charges were extra so that the total cost of the survey to date was \$21,595.00.

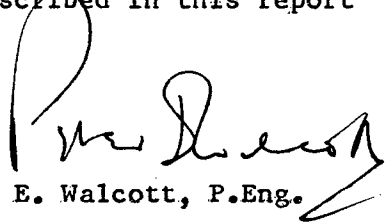
PERSONNEL EMPLOYED ON SURVEY

<u>Name</u>	<u>Occupation</u>	<u>Address</u>	<u>Dates</u>
Peter E. Walcott	Geophysicist	Peter E. Walcott & Assoc. 605 Rutland Court, Coquitlam, B.C.	July 30 - Aug. 6, Aug. 22 - Sept. 4, Oct. 5 - 10, 1975 Nov. 24 - 26, 1976
G. MacMillan	Geophysical Operator	" "	Aug. 4 - 6, Sept. 1- 3, 15 - 22, 26, Oct. 9th, 1975 Nov. 22 - 27, 1976
V. Pashniak	"	" "	Oct. 6 - 9, 1975
D. Bingham	"	" "	Aug. 4 - 24, 1975
V. Gale	"	" "	Aug. 4-6, Sept. 2-3, 15 - 22, 30, 1975
S. Scurvey	"	" "	Aug. 4 - 27, Oct 5 - 10, 1975
P. Charlie	"	" "	Sept. 2 - 4, 1975
H. O'Brian	"	" "	Oct. 6 - 9, 1975
G. MacMillan	Calculations	" "	Sept. 1 - 3, 1975
J. Walcott	Calculations & Typing	" "	Aug. 31, Sept. 1-4, 1975 Nov. 27th, 1976

CERTIFICATION

I, Peter E. Walcott, of the Municipality of Coquitlam, British Columbia, hereby certify that:

1. I am a Graduate of the University of Toronto in 1962 with a B.A.Sc. in Engineering Physics, Geophysics Option.
2. I have been practising my profession for the last fourteen years.
3. I am a member of the Association of Professional Engineers of British Columbia, Ontario and the Yukon Territory.
4. I hold no interest in the property described in this report nor do I expect to receive any.


Peter E. Walcott, P.Eng.

Vancouver, B.C.

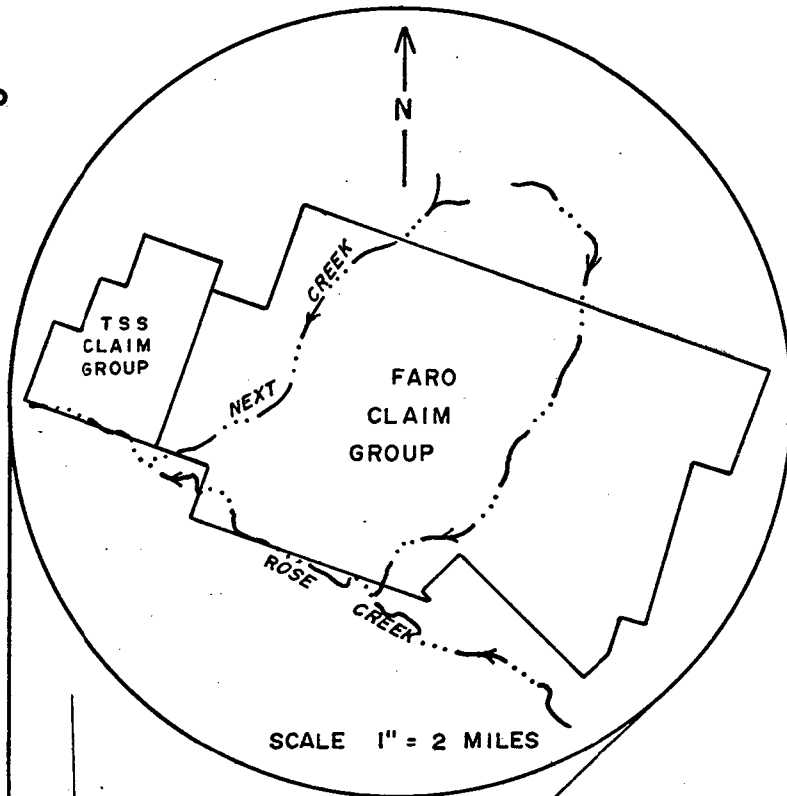
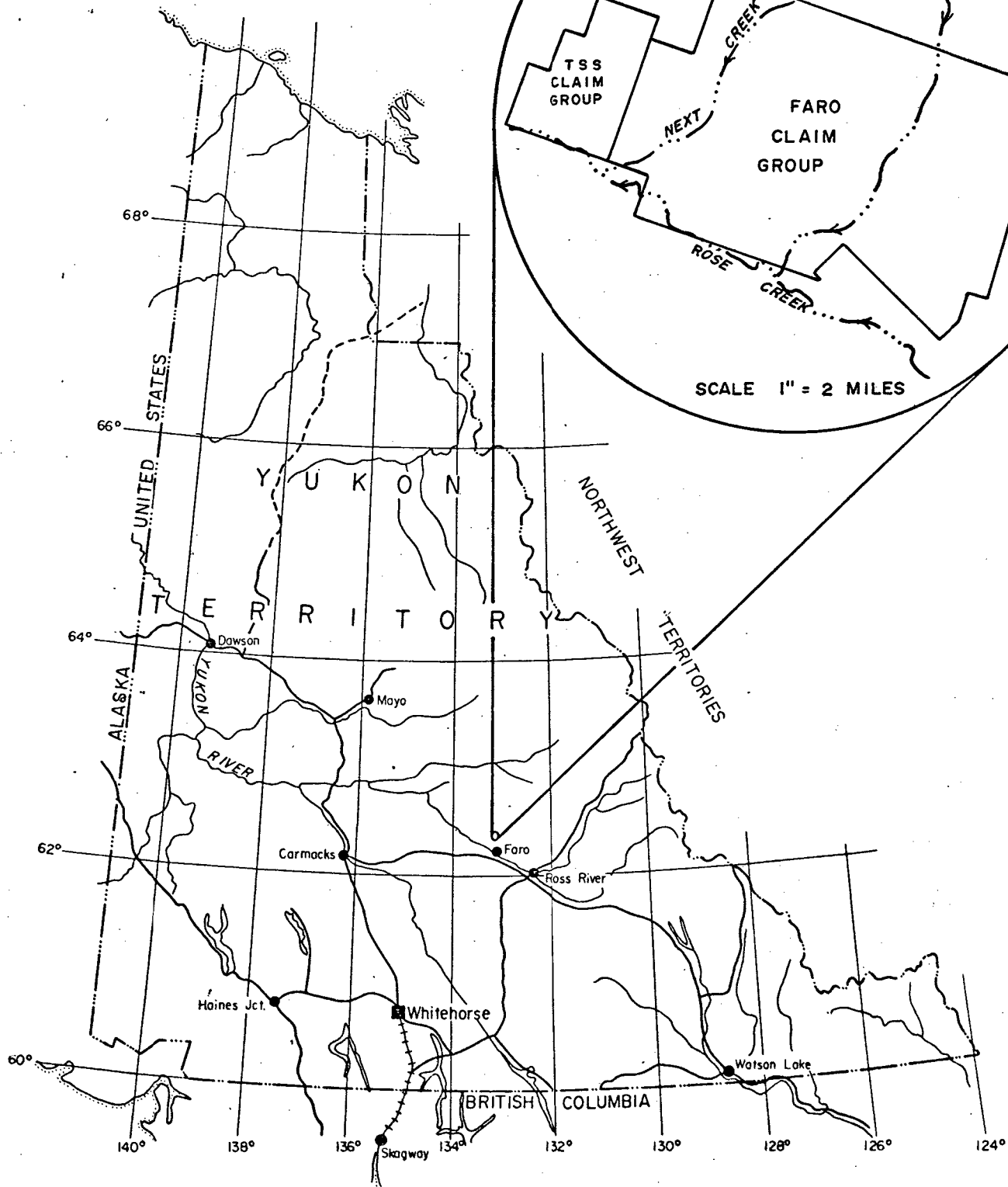
November 1976

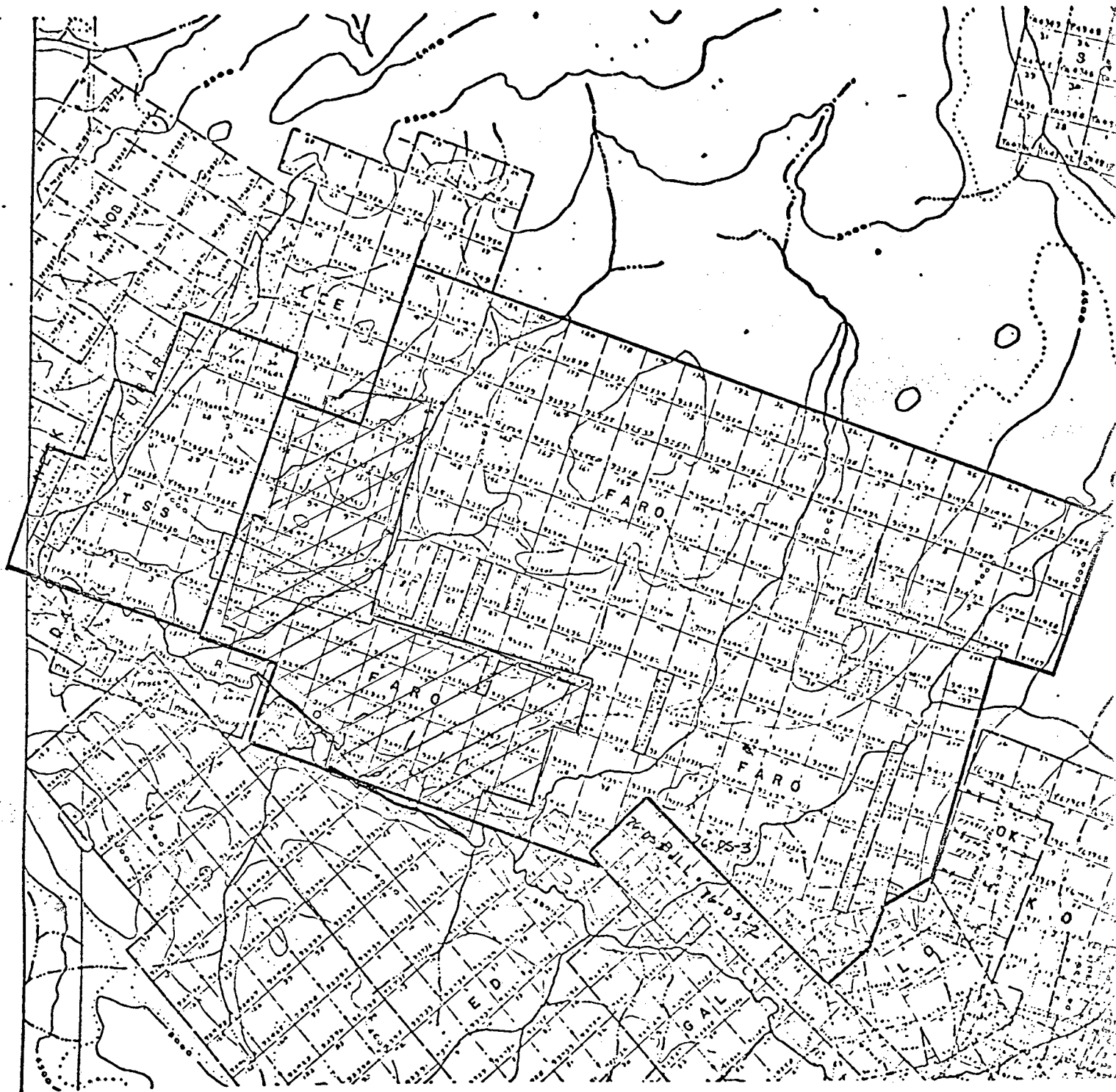
CYPRUS ANVIL MINING CORP.

TSS & FARO CLAIMS ; ANVIL AREA ; WHITEHORSE M.D., Y.T.


PROPERTY LOCATION MAP

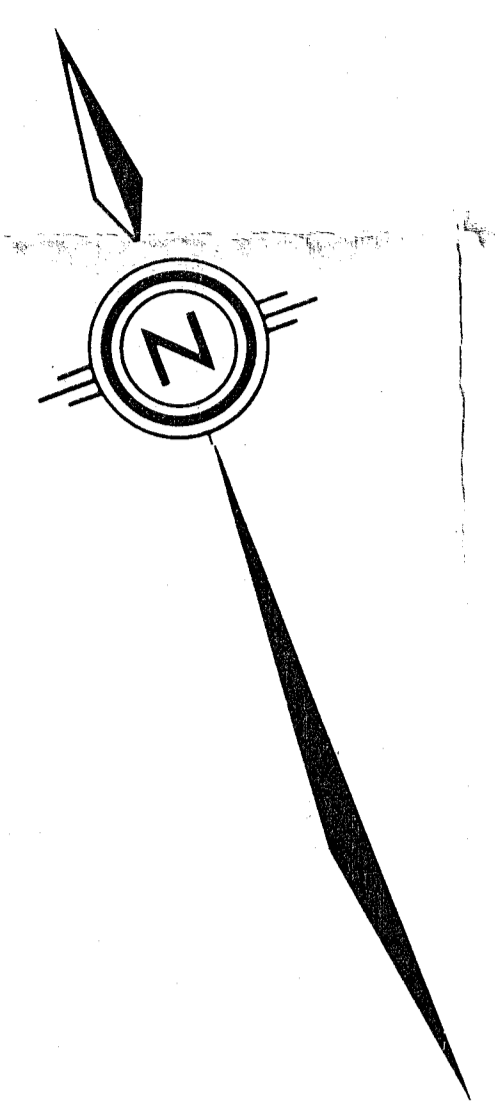
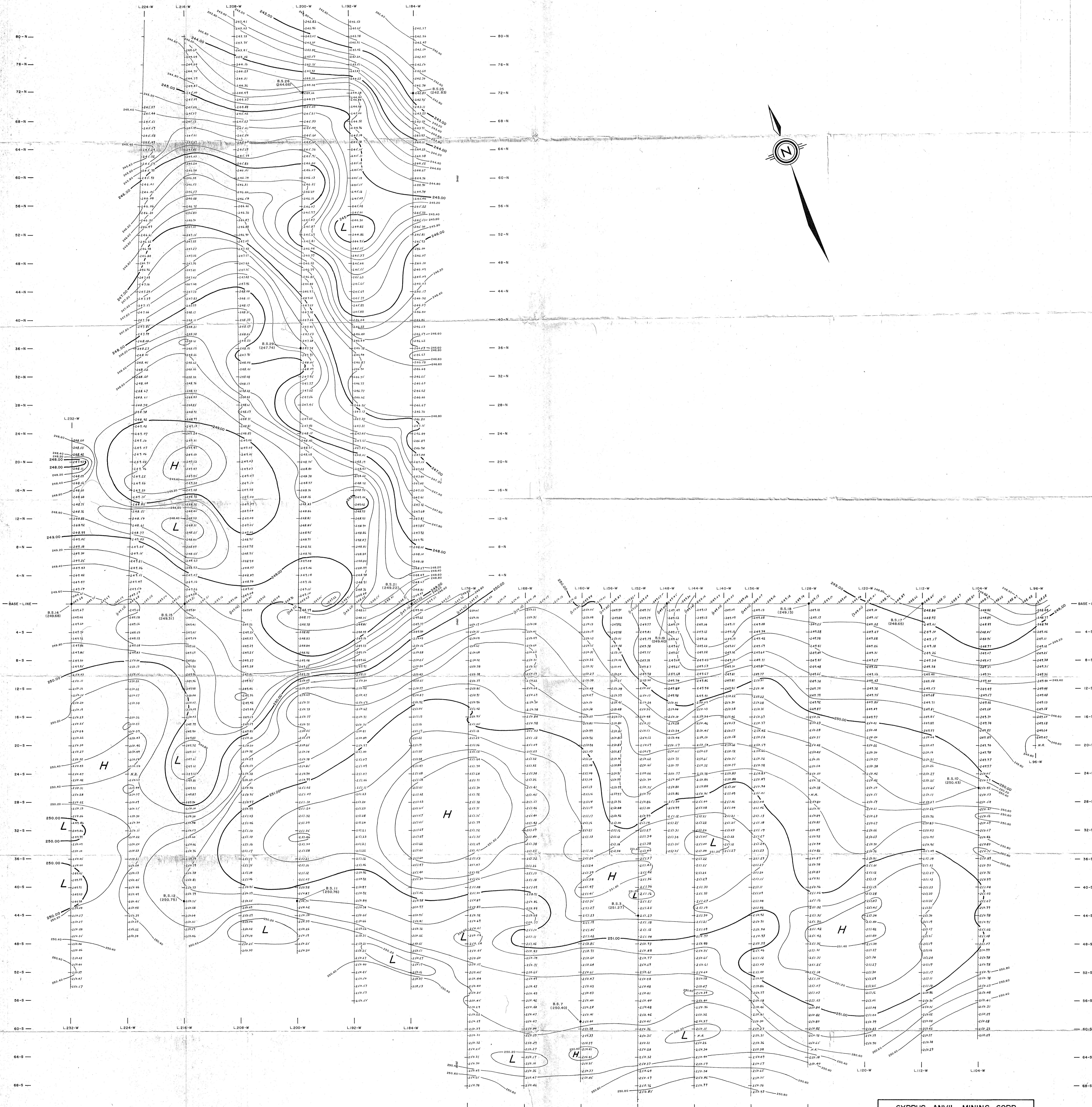
SCALE 1" = 100 MILES



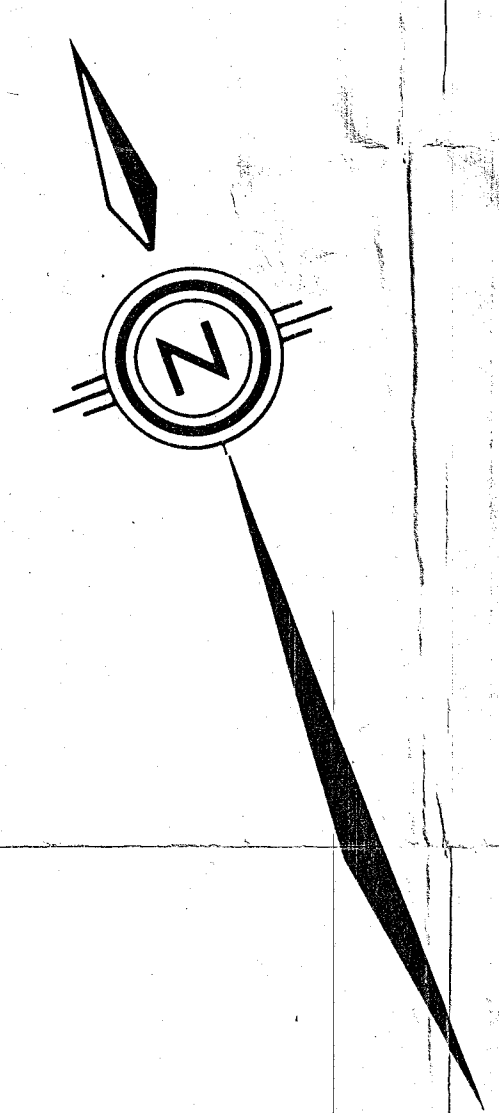
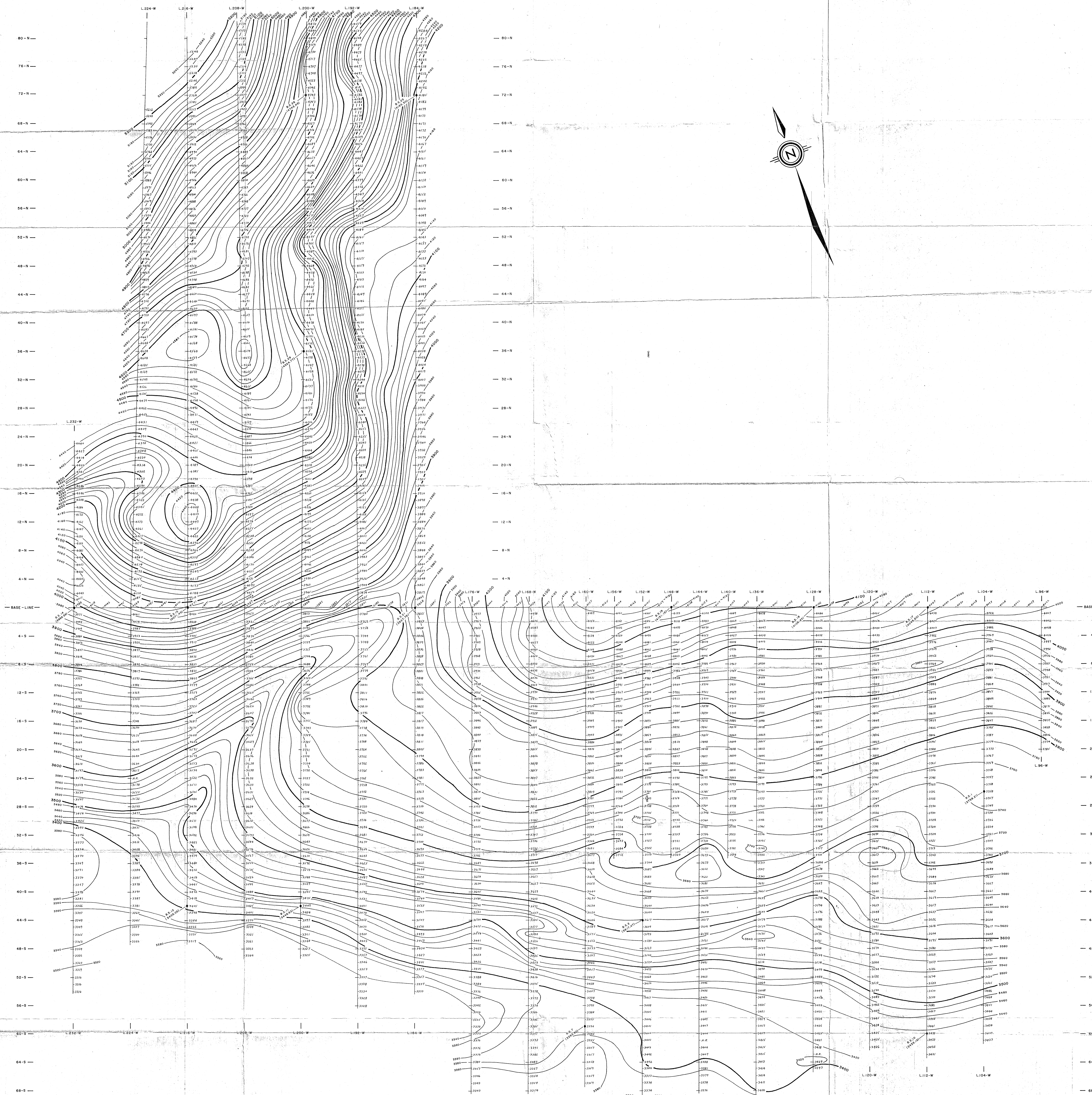


CLAIM & GRID LOCATION MAP
Faro Claims, Whitehorse M.D., Y.T.
Scale 1" = 1 Mile

 Grid area



CYPRUS ANVIL MINING CORP.
 WEST FARO, ANVIL AREA, WHITEHORSE M.D., YUKON
 (DENSITY = 2.7 gm/cc) → 2.6 gm/cc
GRAVITY SURVEY
 CONTOURS OF BOUGUER GRAVITY
 (IN MILLI - GAL'S)
 SCALE 1" = 400 FEET
 MAP No. W-200-2
 TO ACCOMPANY A REPORT BY
 PETER E. WALCOTT, P. Eng. DATED NOV-1976
 PETER E. WALCOTT & ASSOC. LTD.
 JULY-OCT. / 1975



CYPRUS ANVIL MINING CORP.
 WEST FARO; ANVIL AREA; WHITEHORSE M.D., YUKON

GRAVITY SURVEY
 CONTOURS OF SURFACE ELEVATION
 (IN FEET ABOVE SEA LEVEL)

 SCALE 1" = 400 FEET

 MAP No. W-200-1
 TO ACCOMPANY A REPORT BY PETER E. WALCOTT & ASSOC. LTD.
 PETER E. WALCOTT, P. Eng.; DATED NOV-1976 JULY-OCT. /1975