

Property Name: Common MARG Other
Location: Lat. 64°01' Long. 134°28' NTS 106D/1
Metals: Major Copper, Lead, Zinc, Silver Minor Gold
Type of Mineral Deposit: Formational (?)

020129

History and Previous Work:

Staked as Jack, Marg, etc cl (84070) by Can Superior EL in Apr/65 on a GSC stream sediment anomaly and explored with soil sampling, mapping and hand trenching in 1965 and 1966 in a joint venture with United Keno Hill ML. Can Superior EL performed additional trenching and detailed geochemistry in 1967. United Keno Hill ML tied on the W cl (84142) to the west in Mar/65 and performed geochem sampling in 1965. Restaked as Flash cl (YA15282) in July/77 by Mountaineer ML and Welcome North ML and as TUDL cl (YA76787) in Sept/82 by ZX Joint Venture (Chevron, SMD Mg and Enterprise EL), which explored with mapping, geochem sampling and trenching in 1982 and 1984. In 1986, All-North Res L optioned the property and performed soil sampling, hand trenching and VLF, mag, Max-Min and IP surveys.

**

Description:

A large intense copper-lead-zinc soil anomaly approximately 300 by 1200 m is associated with a deeply weathered sequence of pyritiferous graphitic phyllite, quartz sericite schist, chlorite schist, quartzite and greenstone. A fragment of pyrite examined microscopically contained 20% chalcopyrite and 40% sphalerite. Another piece of pyrite-rich mineralized float assayed 12.8% Cu, 8.0% Pb, 2.2% Zn, 160 g/t Ag and 2.3 g/t Au. The sample contained supergene copper minerals and the copper, and possibly gold, values may reflect surface enrichment. The 1984 hand trenches encountered a number of metal-rich limonite bands conformable with bedding in the host rock. The 1986 work confirmed the earlier results and hand trenching uncovered numerous areas of oxidized float mineralization. Detailed geochemical surveys suggest that one or more stratigraphically controlled zones are present.

**

References:

GSC Maps 45,47,50-1965
 ER, Oct/66 by R.E. Van Tassel for UKHM - FFAC
 ER, Dec/67 by A.R. Archer for Can Superior EL - FFAC
 YEG 1982, p.180; 1983, p.233; 1984, p.153

*

NICK PROPERTY

(Ni,PGE)

BLENDE PROPERTY

(Zn,Pb,Ag,Ge)

NOW PROPERTY

(Pb,Zn,Au,Ag)

CLARK PROPERTY

(Ag,Pb,Zn)

MARG PROPERTY

(Cu,Zn,Pb,Ag,Au)

KENO CITY

**ELSA
UNITED KENO HILL
MINES LTD.**

MAYO

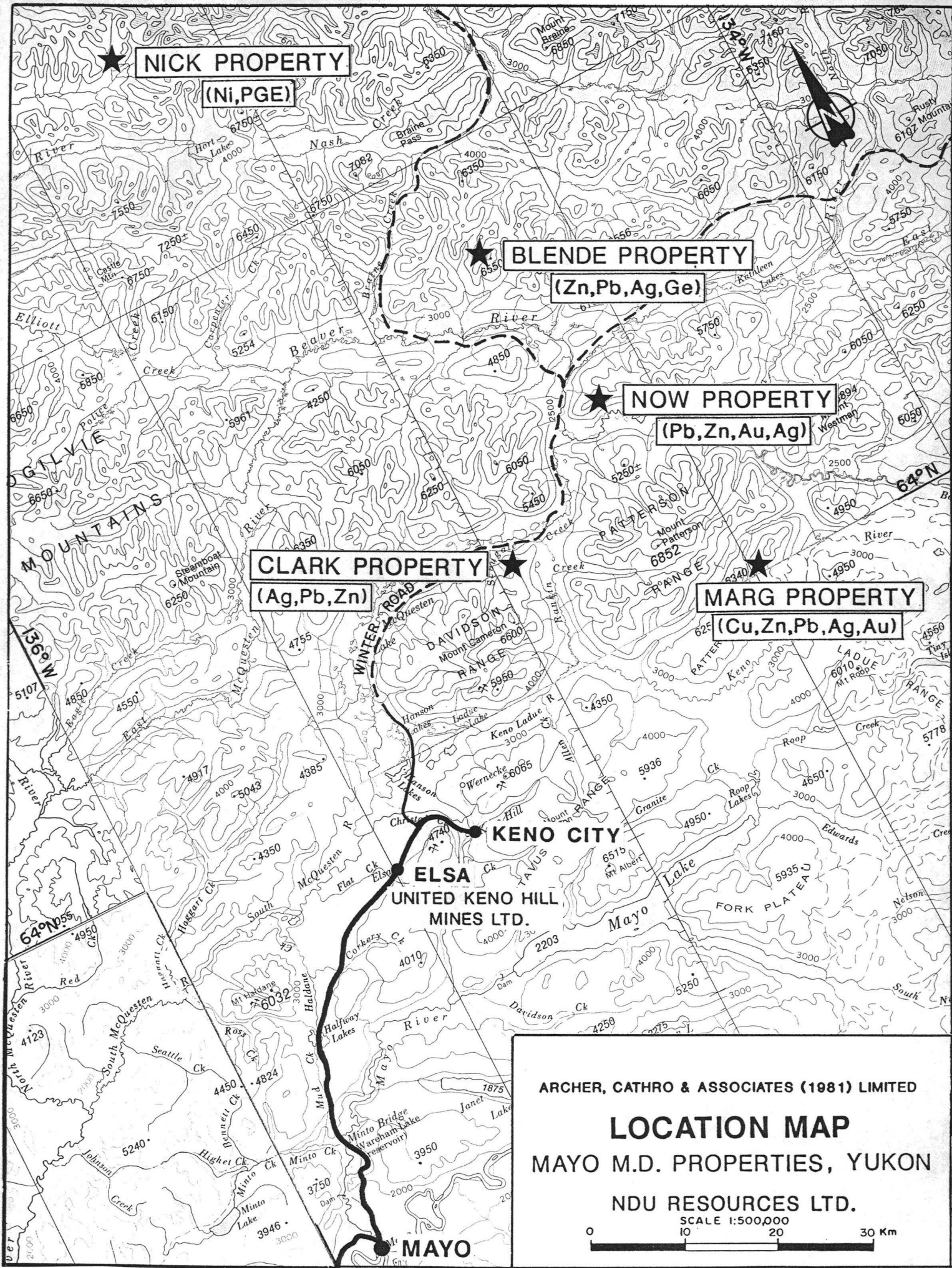
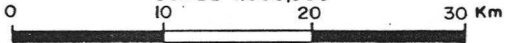
ARCHER, CATHRO & ASSOCIATES (1981) LIMITED

LOCATION MAP

MAYO M.D. PROPERTIES, YUKON

NDU RESOURCES LTD.

SCALE 1:500,000



NDU (MARG)

DRILL CORE SAMPLE SUMMARY

<u>HOLE</u>	<u>SAMPLE #</u>		<u>FROM</u>	<u>TO</u>	<u>LENGTH (FT)</u>	<u>REC.</u>	
						<u>FT.</u>	<u>%</u>
88-2	1751	LB & QM	62.0	72.0	10.0	7.0	70
	1752	LB	72.0	82.3	10.3	9.1	90
	1753	QM	82.3	92.5	10.2	9.0	85
	1754	MS	92.5	97.0	4.5	4.5	100
	1755	MS	97.0	102.0	5.0	4.9	95+
	1756	MS	102.0	107.0	5.0	4.9	85+
	1757	BS	107.0	112.0	5.0	5.0	100
88-1	1758	MS in GQ	82.0	83.5	1.5	1.5	100
	1759	MS in QG	95.0	102.0	7.0	6.7	95
	1760	MS in QG	102.0	112.0	10.0	9.5	95

LB = Limonitic Boxwork
 MS = Massive Sulfides
 QM = Quartz-Muscovite Schist
 GQ = Graphitic Quartzite
 BS = Black Shale
 QG = Quartz-Graphite Schist

MARG 1-144

Barry Lake

TUDL 1-32

HOLE 88-5

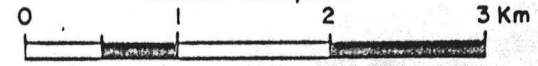
64°00'N

JANE ANOMALY

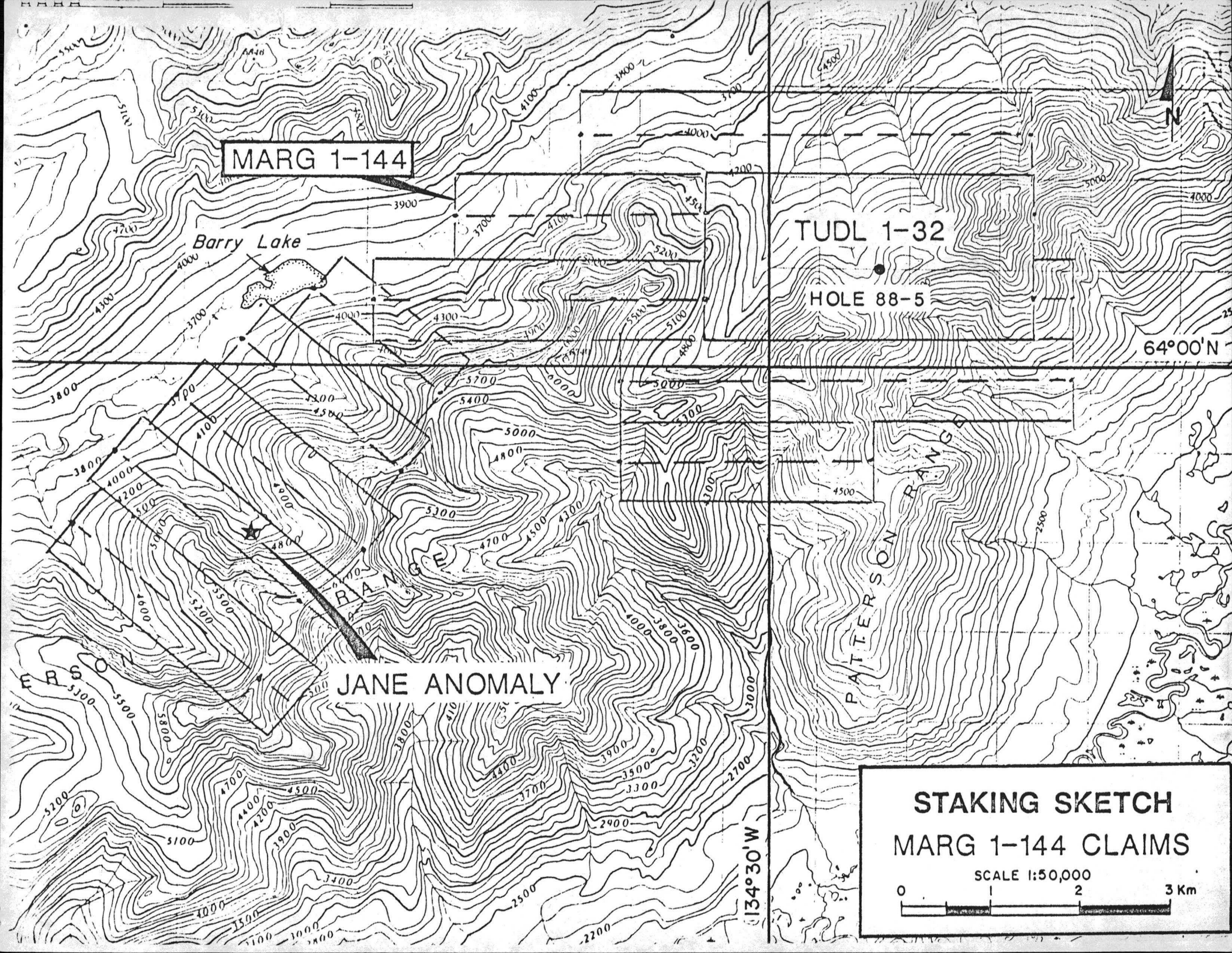
PATTERSON RANGE

STAKING SKETCH
MARG 1-144 CLAIMS

SCALE 1:50,000

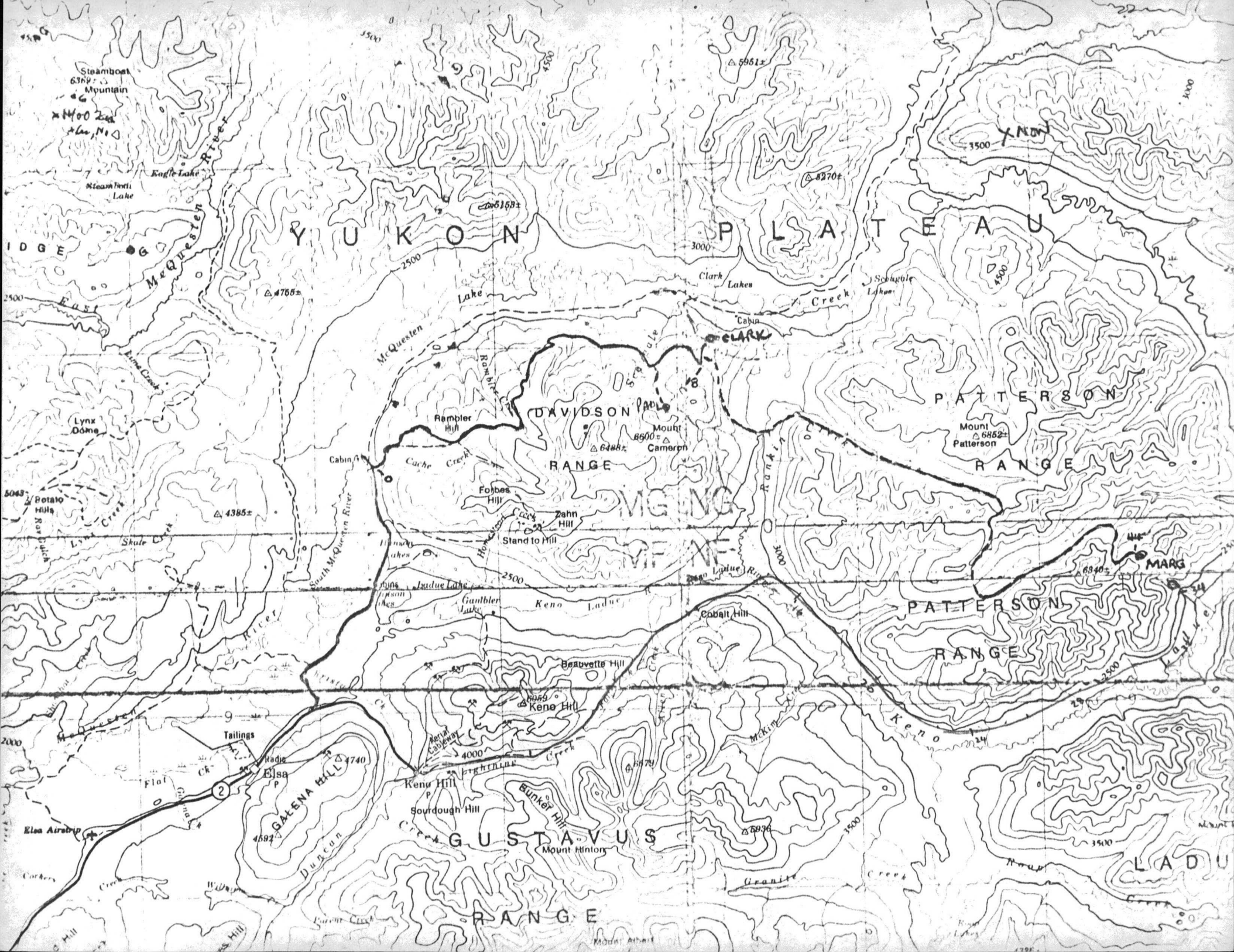


134°30'W



Hole	Grid Coordinates (m)*		Azimuth (°)	Dip (°)	Depth (Ft)	Cumulative Total (Ft)
	E	N				
88-1	1650	815	345	-50	597	597
88-2	2440	860	0	-50	371	968
88-3	2440	860	0	-80	267	1,235
88-4	2375	780	0	-50	300	1,535
88-5	2375	780	0	-70	287	1,822
88-6	2280	675	0	-50	477	2,299
88-7	1260	700	345	-50	Drilling	2756
8	1760	920	342	-50	425	3181

*Note - Because the 1967 grid was poorly cut, all coordinates are measured with respect to the 600N baseline.



CHEMEX ASSAYS
MARG - HOLE 88-5

From	Length (ft)		Intercept	Sample Number	Cu (%)	Cu/ Pb+Zn	Assays		Zn (%)	Pb/ Pb+Zn	Au (oz/t)	Ag (oz/t)
	To						Pb (%)					
201.0	206.0		5.0	S9953	0.05	.31	0.06	0.16	0.10	.375	0.002	0.16
206.0	210.3		4.3	S9954	0.63	.23	0.97	2.79	1.82	.348	0.004	0.47
210.3	217.0		6.7	S9955	4.99	.52	3.75	9.57	5.82	.392	0.042	3.10
217.0	222.0		5.0	S9956	2.84	.34	3.03	8.35	5.32	.363	0.030	2.01
222.0	227.0		5.0	S9957	2.49	.21	4.42	11.56	7.14	.382	0.028	2.13
227.0	232.0		5.0	S9958	3.03	.31	3.41	9.68	6.27	.352	0.024	2.02
232.0	237.0		5.0	S9959	2.79	.22	4.37	12.29	7.92	.356	0.030	1.77
237.0	245.3		8.3	S9960	3.24	.31	3.32	10.34	7.02	.321	0.026	1.49
245.3	257.0		9.7	S9961	0.32	.55	0.20	0.58	0.38	.343	0.012	0.11

Weighted Average

210.3	245.3	35.0			3.32		3.68		6.59		0.030	2.08
-------	-------	------	--	--	------	--	------	--	------	--	-------	------

July 5, 1988