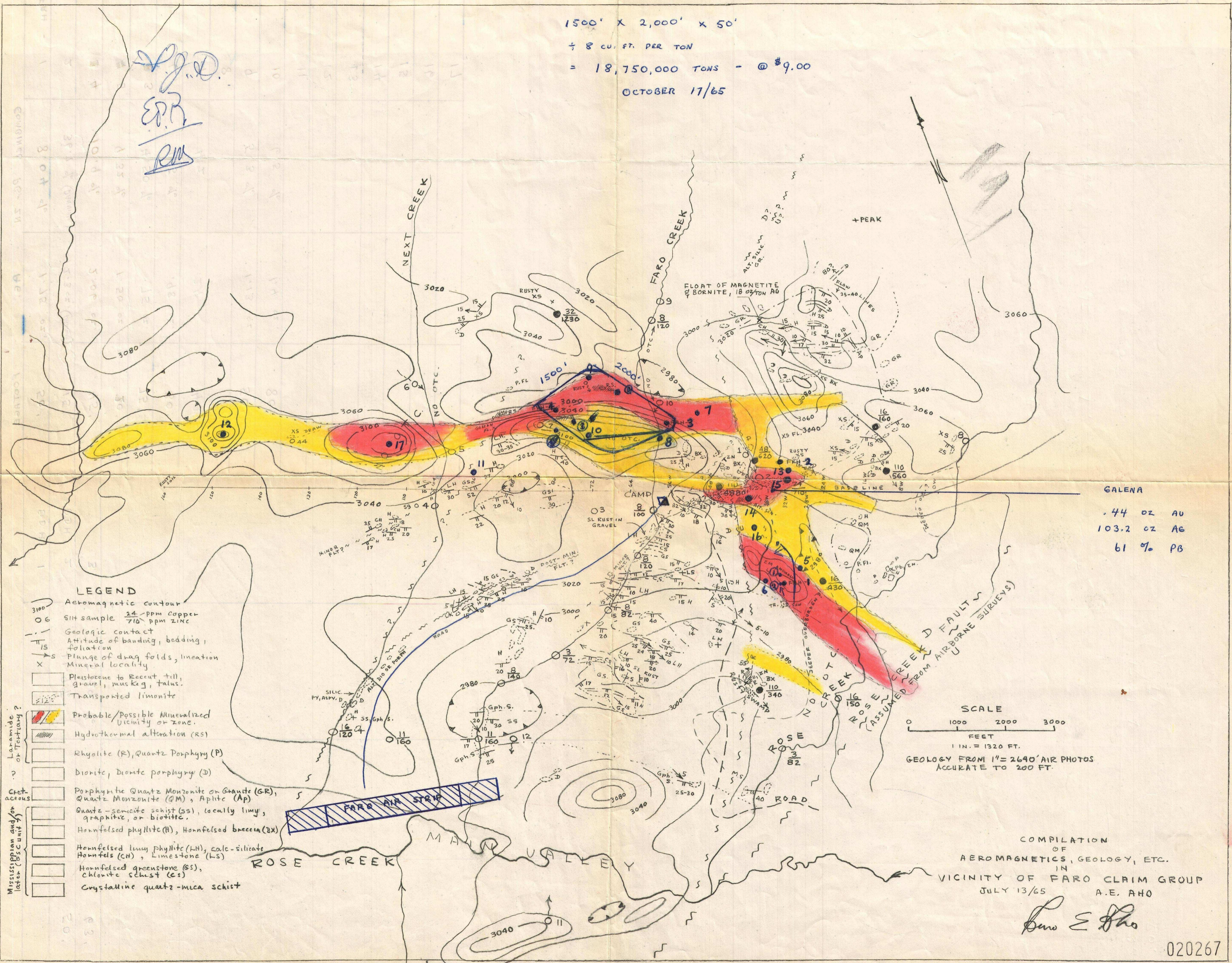


1500' x 2,000' x 50'
 4/8 CU. FT. PER TON
 = 18,750,000 TONS - @ \$9.00
 OCTOBER 17/65

Handwritten initials:
 S.P.D.
 E.P.R.
 R.M.



GALENA
 .44 OZ AU
 103.2 OZ AG
 61 % PB

LEGEND

- 3100 Aeromagnetic contour
- OG Silt sample 24 ppm Copper, 716 ppm Zinc
- Geologic contact
- Attitude of banding, bedding, foliation
- Plunge of drag folds, lineation
- X Mineral locality
- Plasticene to Recent till, gravel, muskag, talus.
- Transported limonite
- Probable/Possible Mineralized Vicinity or Zone.
- Hydrothermal alteration (RS)
- Rhyolite (R), Quartz Porphyry (P)
- Diorite, Diorite porphyry (D)
- Porphyritic Quartz Monzonite or Granite (GR), Quartz Monzonite (QM), Aplite (Ap)
- Quartz-schist (SS), locally limy, graphitic, or biotitic.
- Hornfelsed phyllite (H), Hornfelsed breccia (BX)
- Hornfelsed limy phyllite (LH), calc-silicate Hornfels (CH), Limestone (LS)
- Hornfelsed greenstone (GS), chlorite schist (CS)
- Crystalline quartz-mica schist

SCALE
 0 1000 2000 3000
 FEET
 1 IN. = 1320 FT.
 GEOLOGY FROM 1" = 2640' AIR PHOTOS
 ACCURATE TO 200 FT.

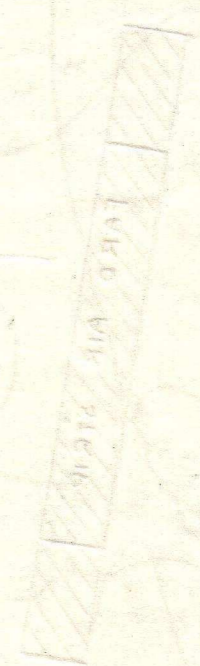
COMPILATION
 OF
 AEROMAGNETICS, GEOLOGY, ETC.
 IN
 VICINITY OF FARO CLAIM GROUP
 JULY 13/65 A.E. AHO

Handwritten signature:
 Leo E. Aho

020267

	COMBINED Pb-Zn	Ag.	FOOTAGE
FRH - 1	8.04 %	1.75 oz.	50'
2	36.7 % (PANNINE)	12.3 oz. (PANNINE)	15'
# 4	10.9 %	2.06 oz.	45'
# 5	9.32 %	1.50 oz.	30'
# 3	4.50 %	.75 oz.	75'
6	7.5 %	.98 oz.	30'
7	4.2	.24	42'
8			
9	5.3 %	1.13 oz.	50'
10	6.5 %	1.4 oz.	80'
11			
12			
13			
14			
15			
16			
17			

DDH 1		
DDH 2	11.9%	50'
3	15.29 %	63'



R. Mackham

DSUSA