

**SYMBOLS**

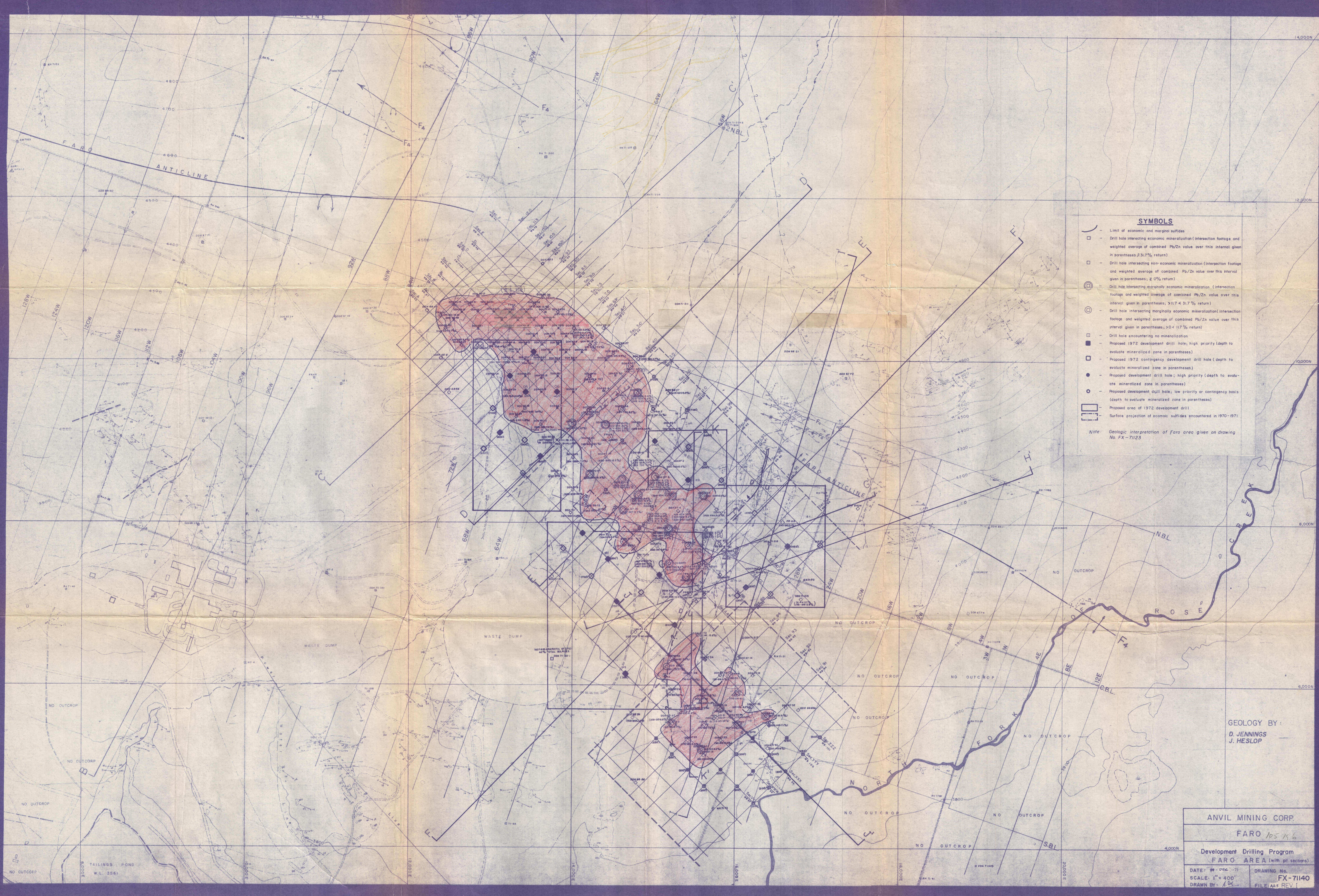
- Limit of economic and marginal sulfides
- Drill hole intersecting economic mineralization (intersection footage and weighted average of combined Pb/Zn value over this interval given in parentheses;  $\geq 31.7\%$  return)
- Drill hole intersecting non-economic mineralization (intersection footage and weighted average of combined Pb/Zn value over this interval given in parentheses;  $\geq 0\%$  return)
- Drill hole intersecting marginally economic mineralization (intersection footage and weighted average of combined Pb/Zn value over this interval given in parentheses;  $>17 < 31.7\%$  return)
- Drill hole intersecting marginally economic mineralization (intersection footage and weighted average of combined Pb/Zn value over this interval given in parentheses;  $>0 < 17\%$  return)
- Drill hole encountering no mineralization
- Proposed 1972 development drill hole; high priority (depth to evaluate mineralized zone in parentheses)
- Proposed 1972 contingency development drill hole (depth to evaluate mineralized zone in parentheses)
- Proposed development drill hole; high priority (depth to evaluate mineralized zone in parentheses)
- Proposed development drill hole; low priority or contingency basis (depth to evaluate mineralized zone in parentheses)
- Proposed area of 1972 development drill
- Surface projection of economic sulfides encountered in 1970-1971

Note: Geologic interpretation of Faro area given on drawing No. FX-71123



GEOLOGY BY:  
D. JENNINGS  
J. HESLOP

ANVIL MINING CORP.	
FARO 105 156	
Development Drilling Program FARO AREA (with pit sections)	
DATE: 20 DEC 71	DRAWING No.
SCALE: 1" = 400'	FX-71140
DRAWN BY: Au	REV. I



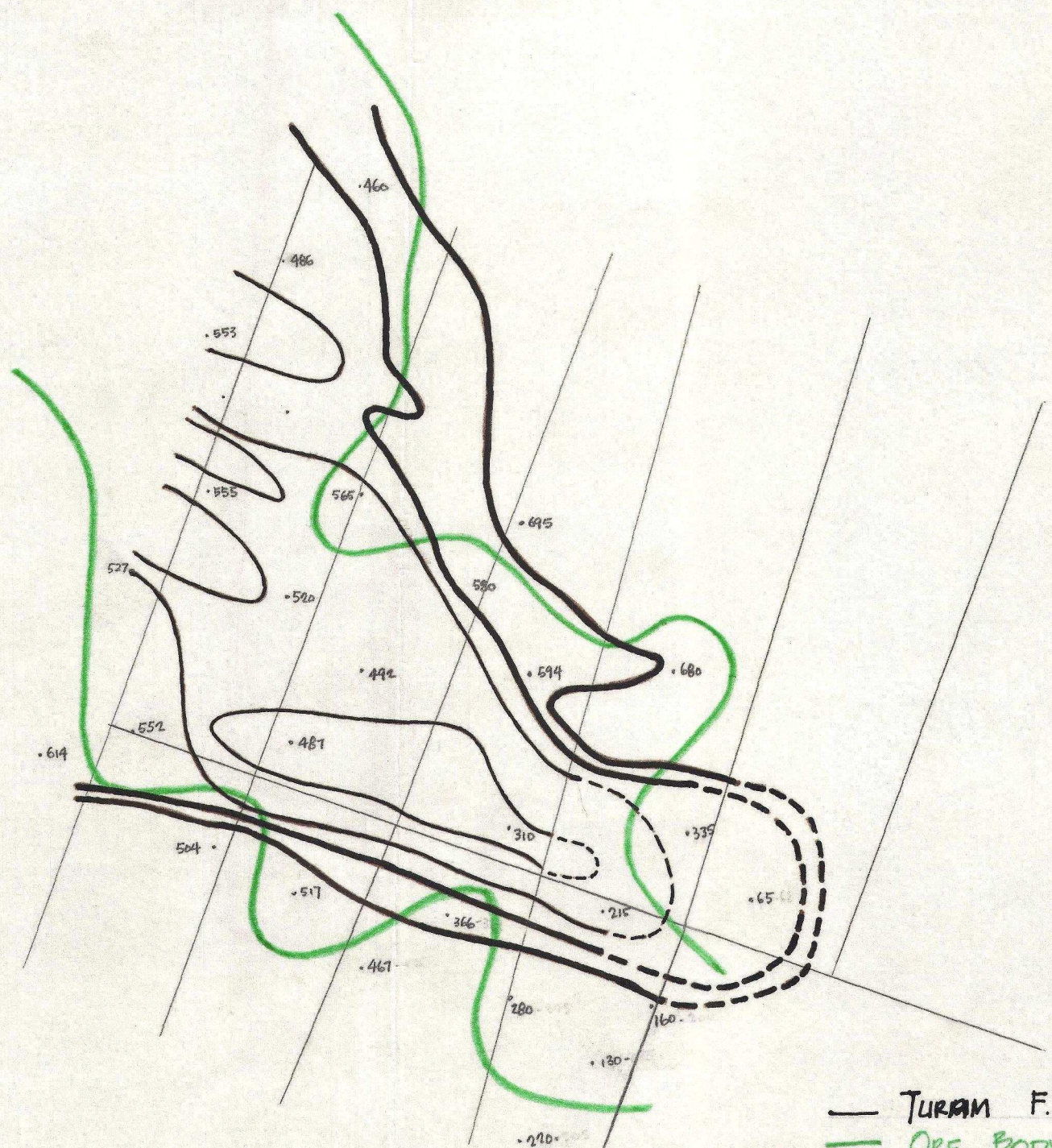
**SYMBOLS**

- Limit of economic and marginal sulfides
- - Drill hole intersecting economic mineralization (intersection footage and weighted average of combined Pb/Zn value over this interval given in parentheses;  $\geq 31.7\%$  return)
- - Drill hole intersecting non-economic mineralization (intersection footage and weighted average of combined Pb/Zn value over this interval given in parentheses;  $\geq 0\%$  return)
- ⊕ - Drill hole intersecting marginally economic mineralization (intersection footage and weighted average of combined Pb/Zn value over this interval given in parentheses;  $11.7 < 31.7\%$  return)
- ⊖ - Drill hole intersecting marginally economic mineralization (intersection footage and weighted average of combined Pb/Zn value over this interval given in parentheses;  $0 < 11.7\%$  return)
- - Drill hole encountering no mineralization
- - Proposed 1972 development drill hole; high priority (depth to evaluate mineralized zone in parentheses)
- - Proposed 1972 contingency development drill hole (depth to evaluate mineralized zone in parentheses)
- - Proposed development drill hole; high priority (depth to evaluate mineralized zone in parentheses)
- - Proposed development drill hole; low priority or contingency basis (depth to evaluate mineralized zone in parentheses)
- - Proposed area of 1972 development drill
- - Surface projection of economic sulfides encountered in 1970-1971

Note: Geologic interpretation of Faro area given on drawing No. FX-71123

GEOLOGY BY:  
D. JENNINGS  
J. HESLOP

ANVIL MINING CORP.	
FARO 105 X 6	
Development Drilling Program FARO AREA (with pit sections)	
DATE: 28 - Dec - 71	DRAWING No. FX-71140
SCALE: 1" = 400'	FILE: 105 X 6 REV 1
DRAWN BY: J.H.	



— TURRAM F.S. 400 H<sub>2</sub>  
— ORE BODY OUTLINE