

Myr-Sark

020350

5000
4500
4000
3500

5000
4500
4000
3500

346
344
342
340
338

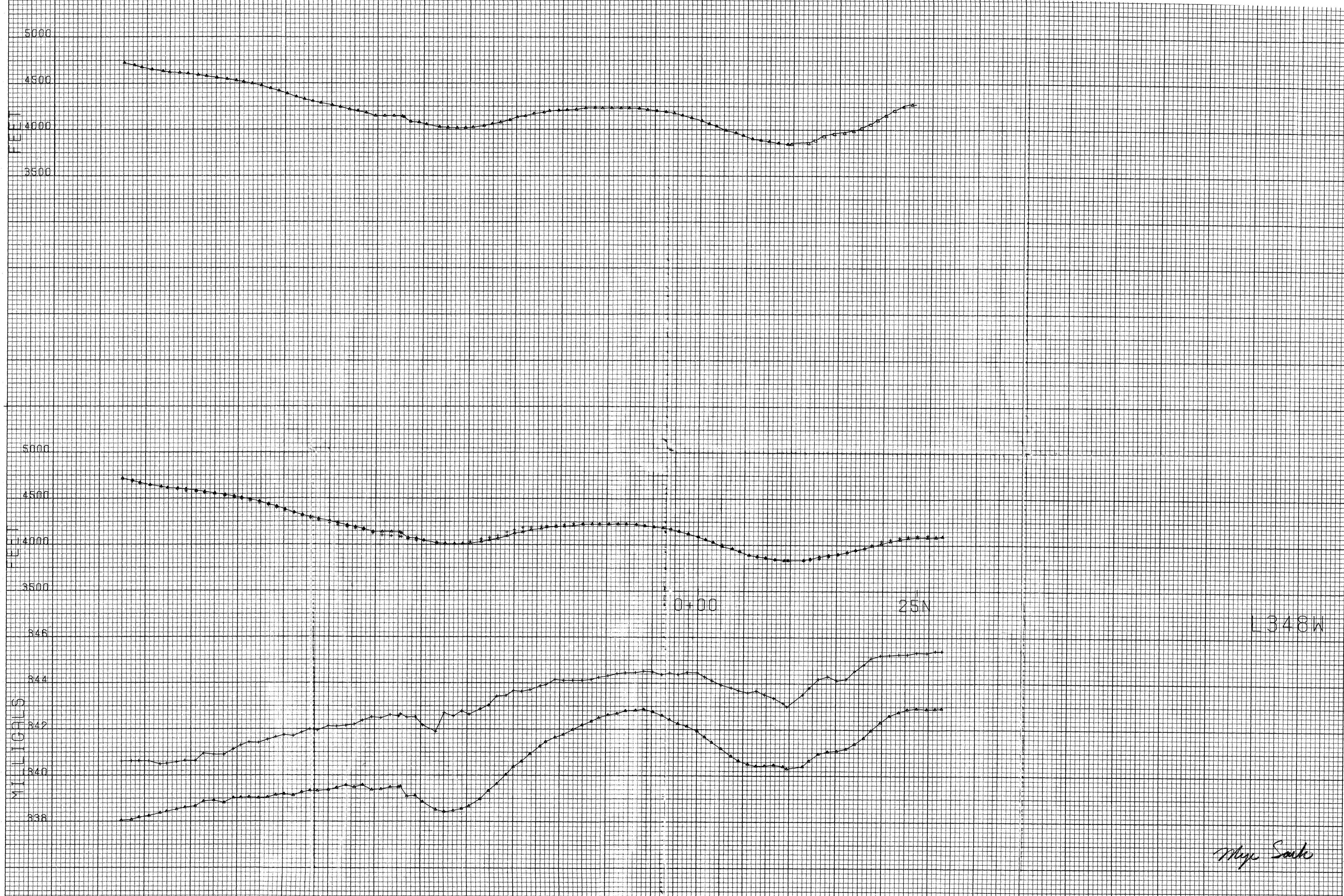
MILLIGALS

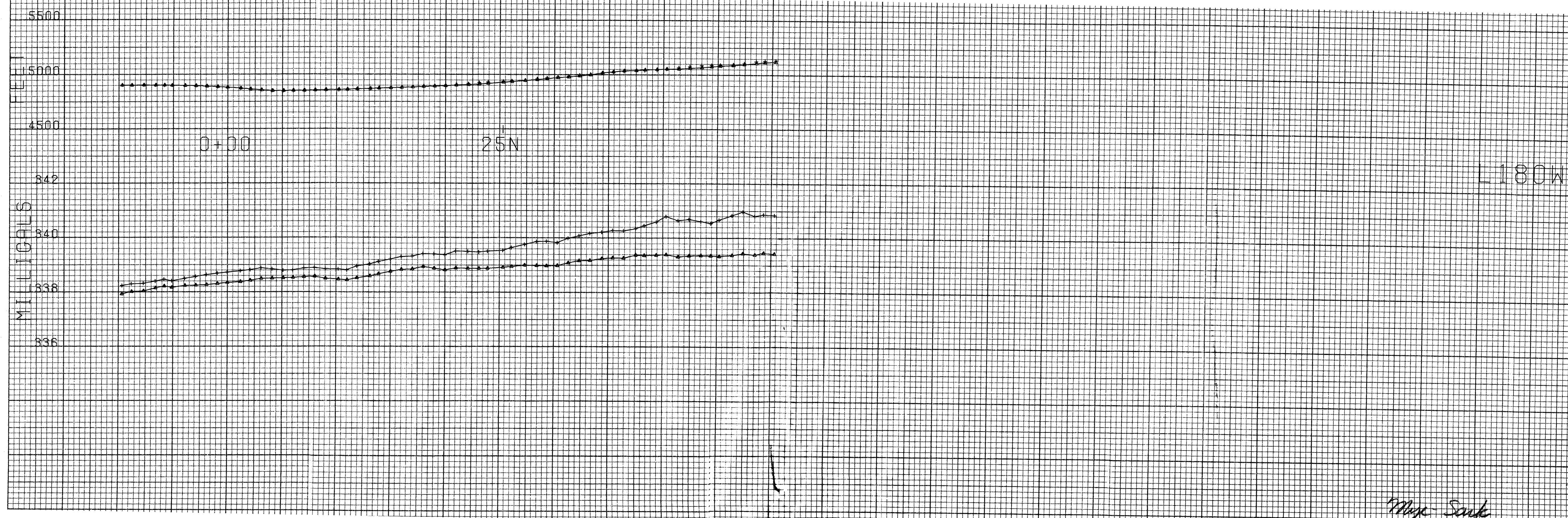
0+00

25N

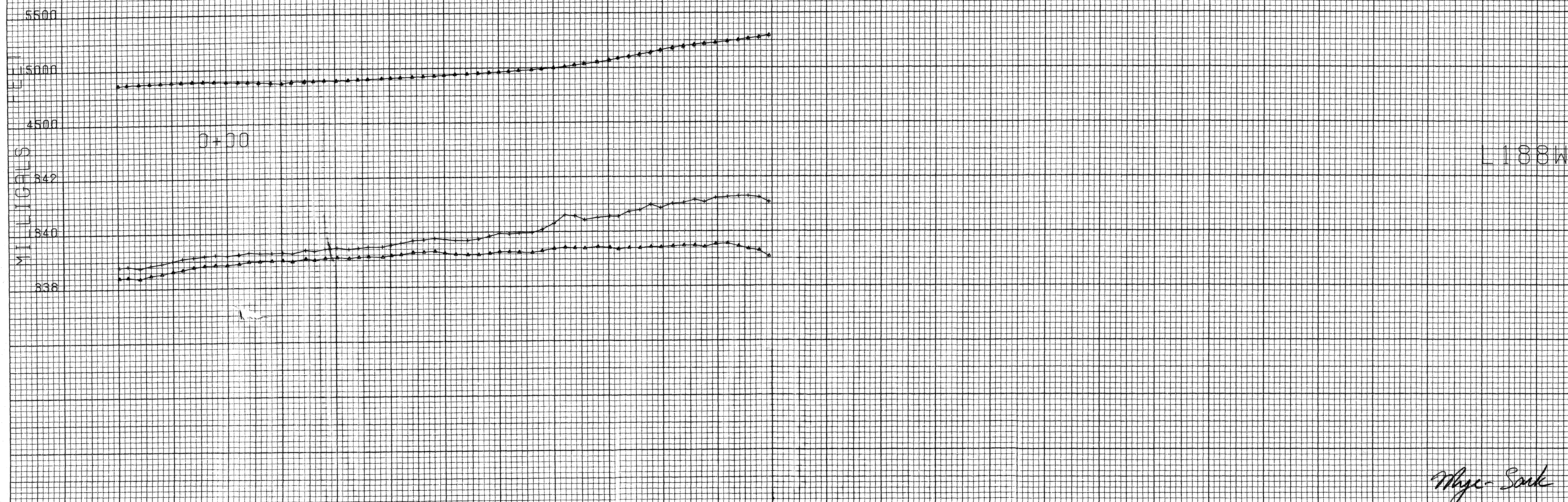
L348W

Allye Sade





Mye Sank

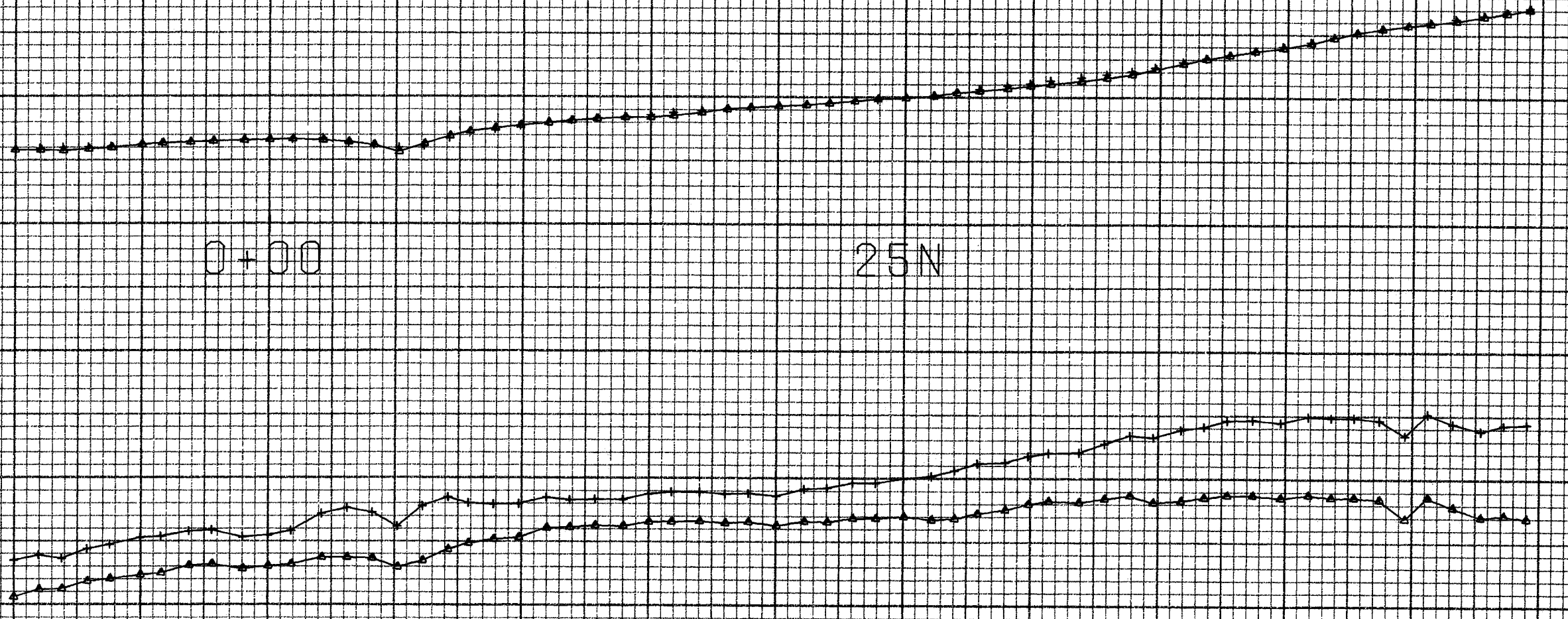


5500
5000
4500
MILLIGALS
342
340
338

0+00

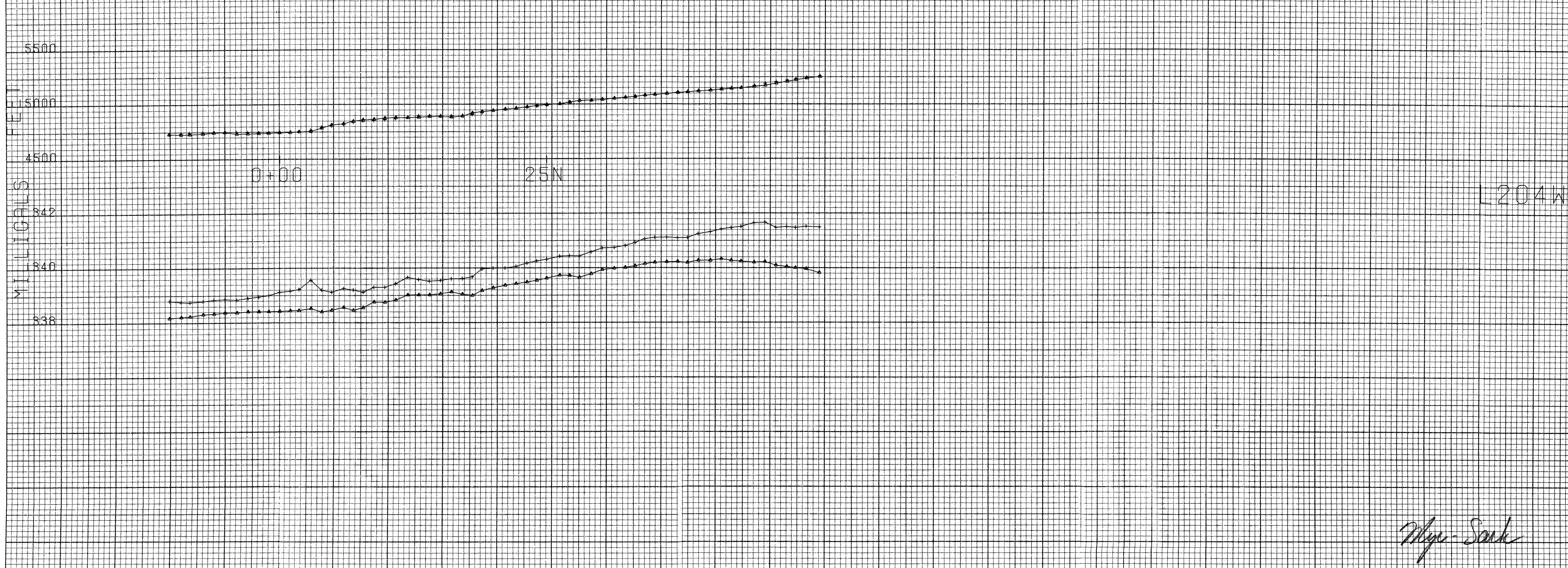
25N

L 196W

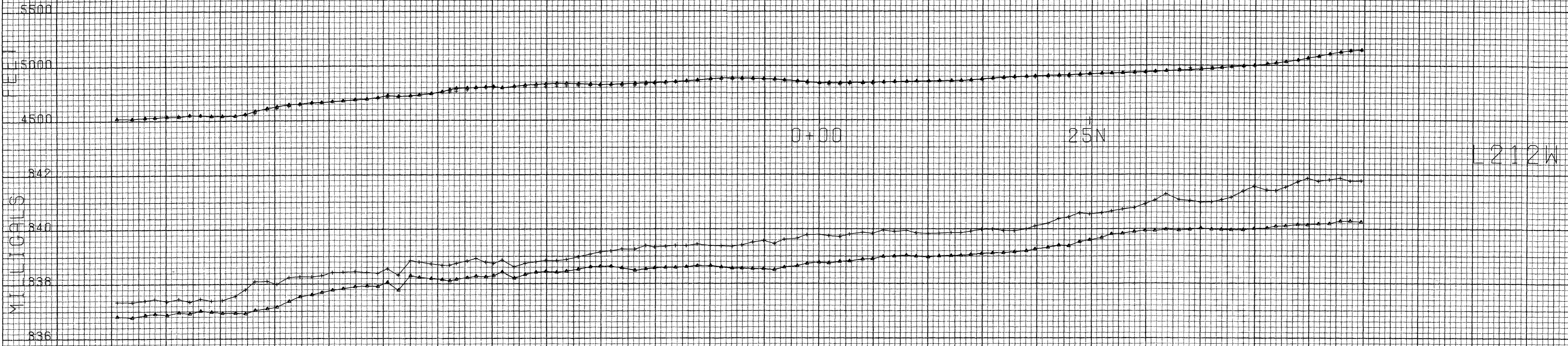


Wye-Sark

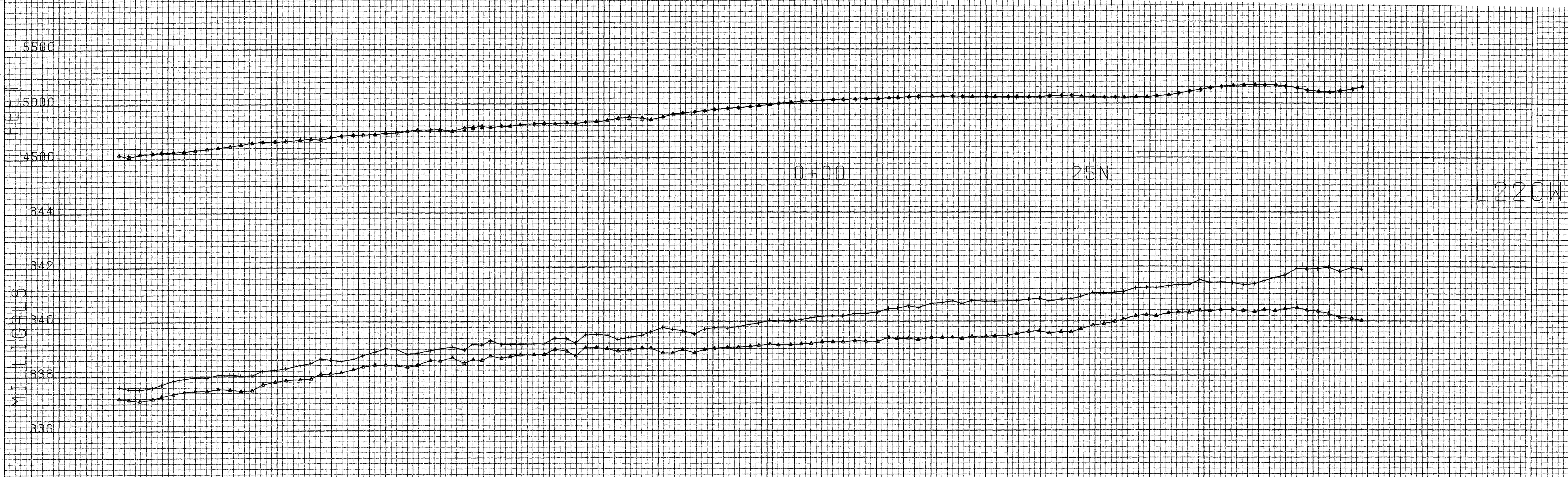
5500
5000
4500
342
340
338
MILIGALS



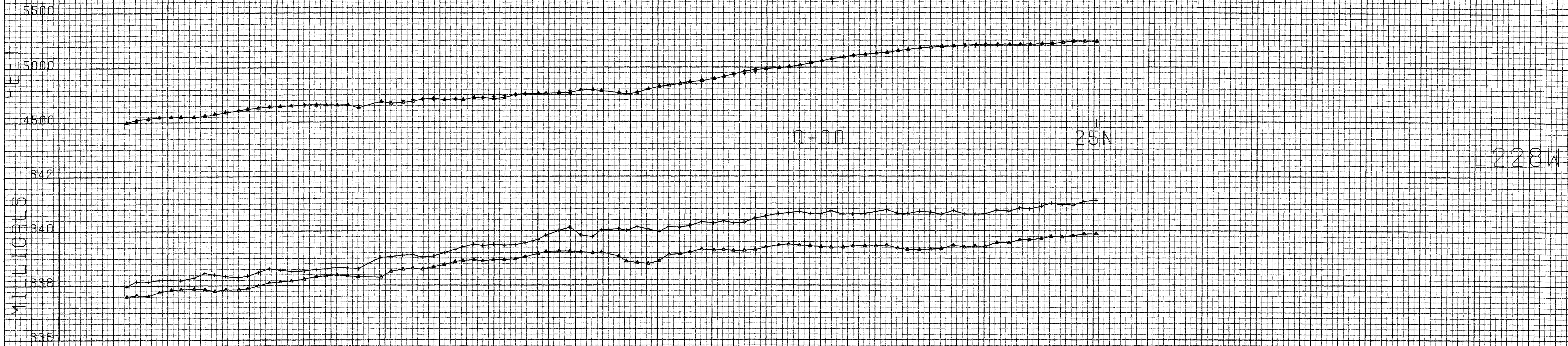
Myer Sork



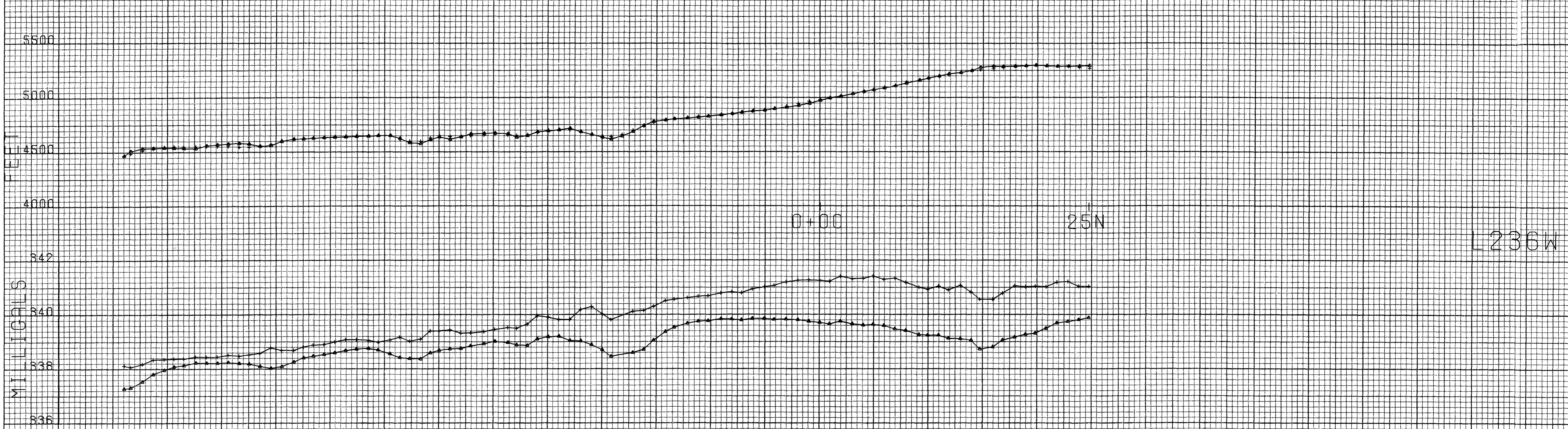
W. J. Sank



Wye-Sark

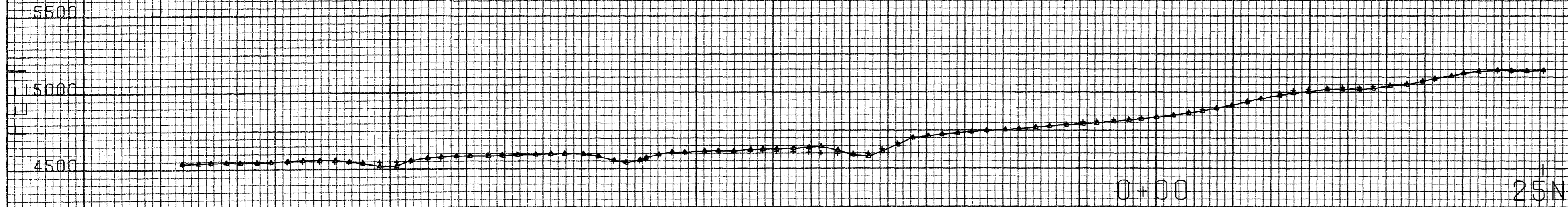


W. S. S. S.



L236W

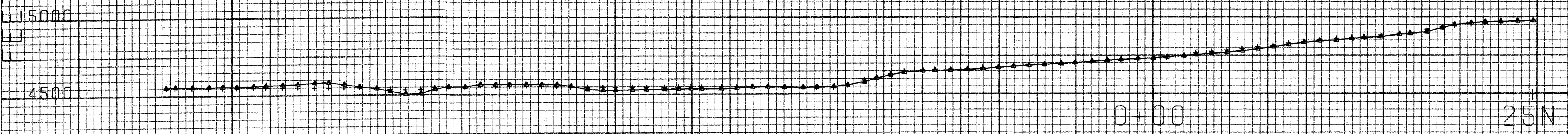
Ray Sank



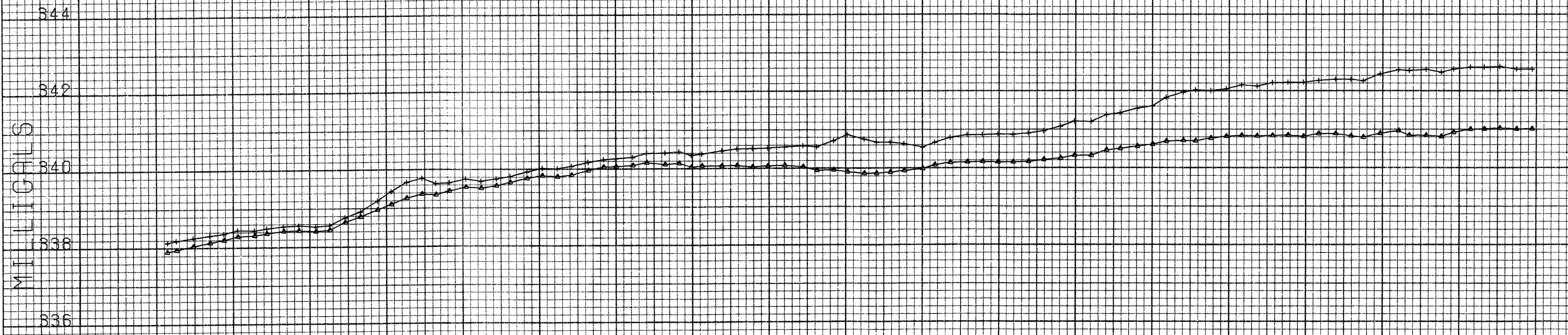
L244W



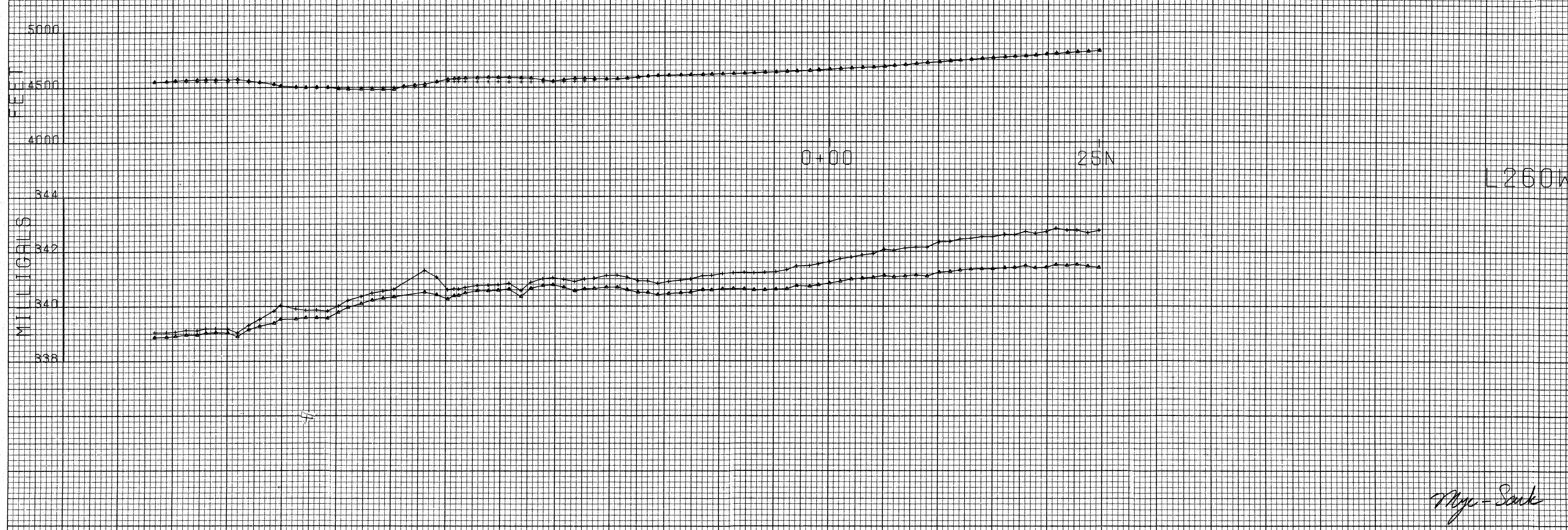
Mye-Sark



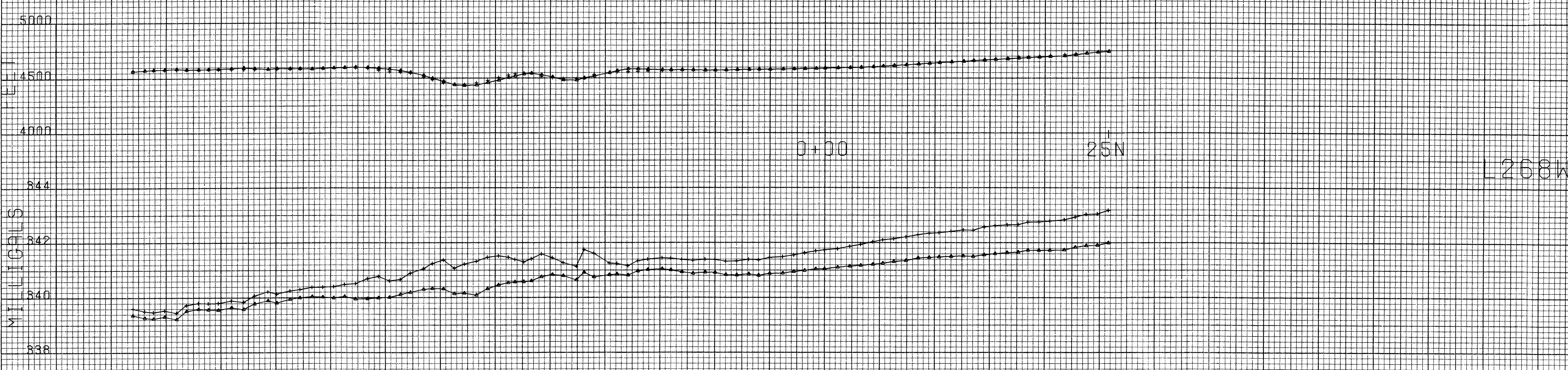
L252W



W. H. Sank

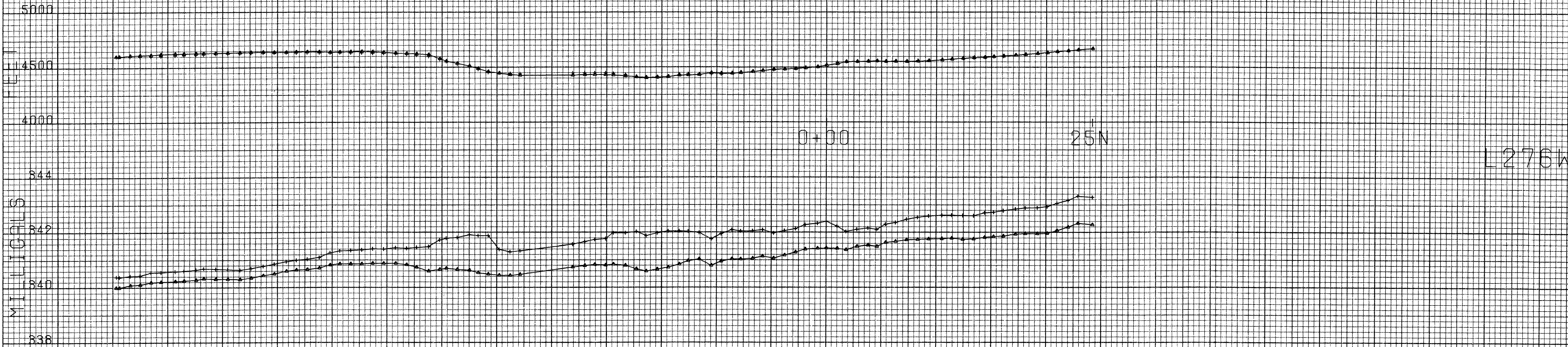


Mye - Sank



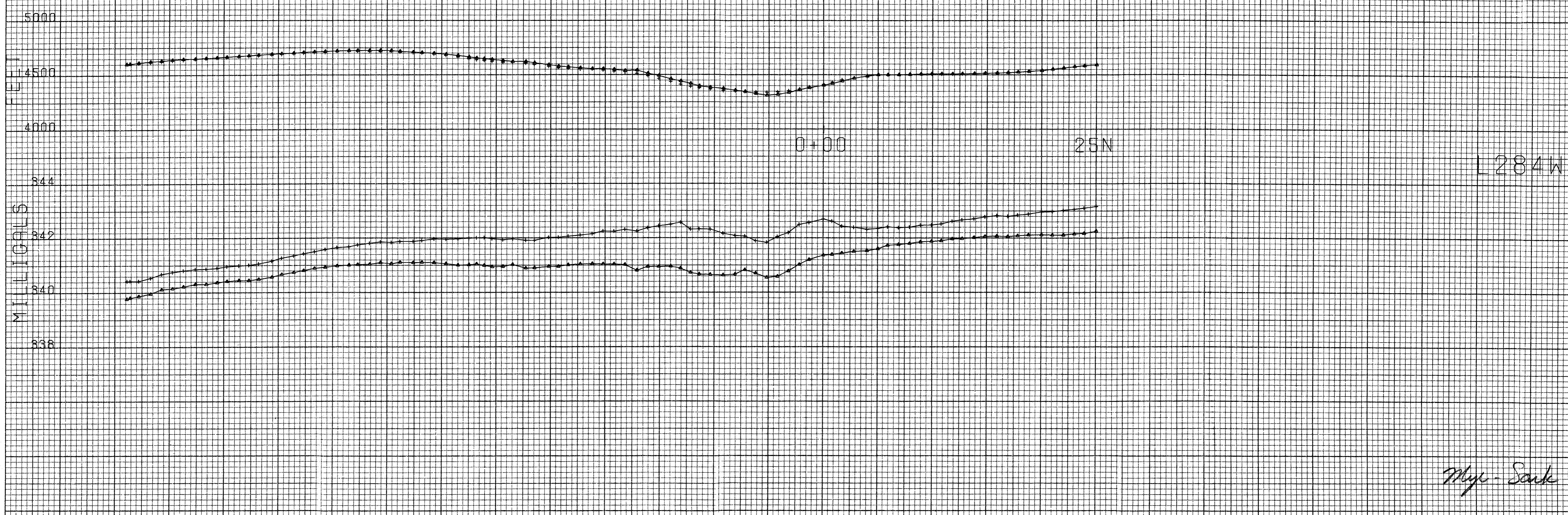
L268W

Mye-Sark



L276W

Wax-Sark



Wye-Sark

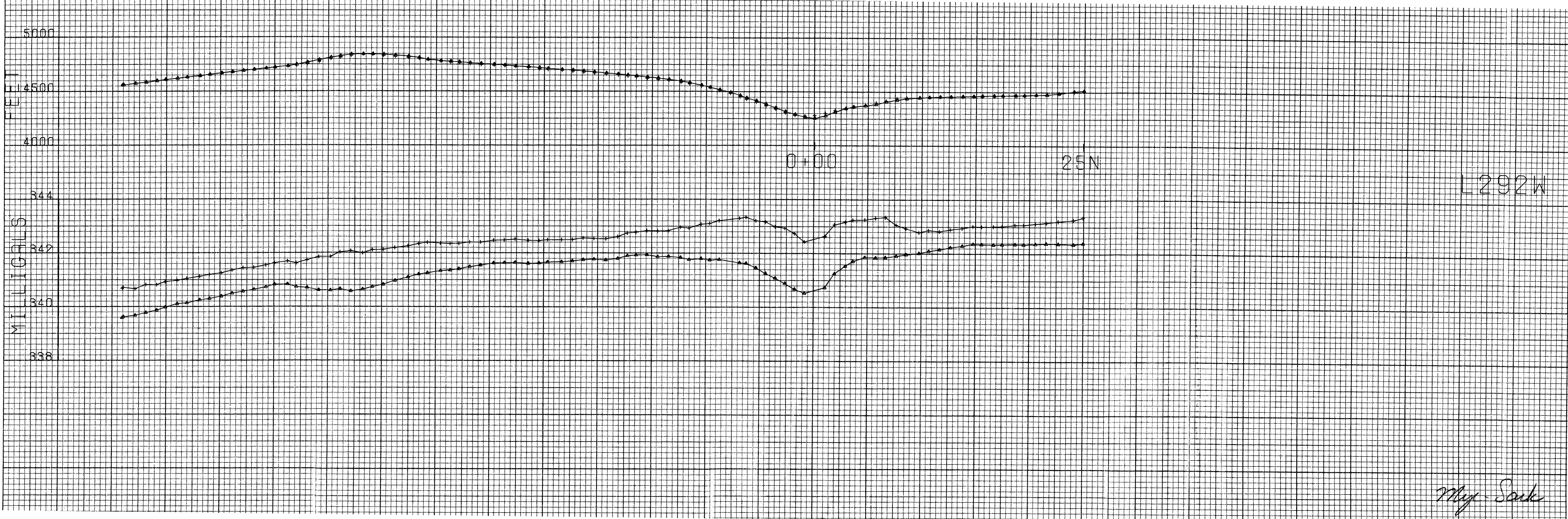
5000
4500
4000
344
MILIGALS
342
340
338

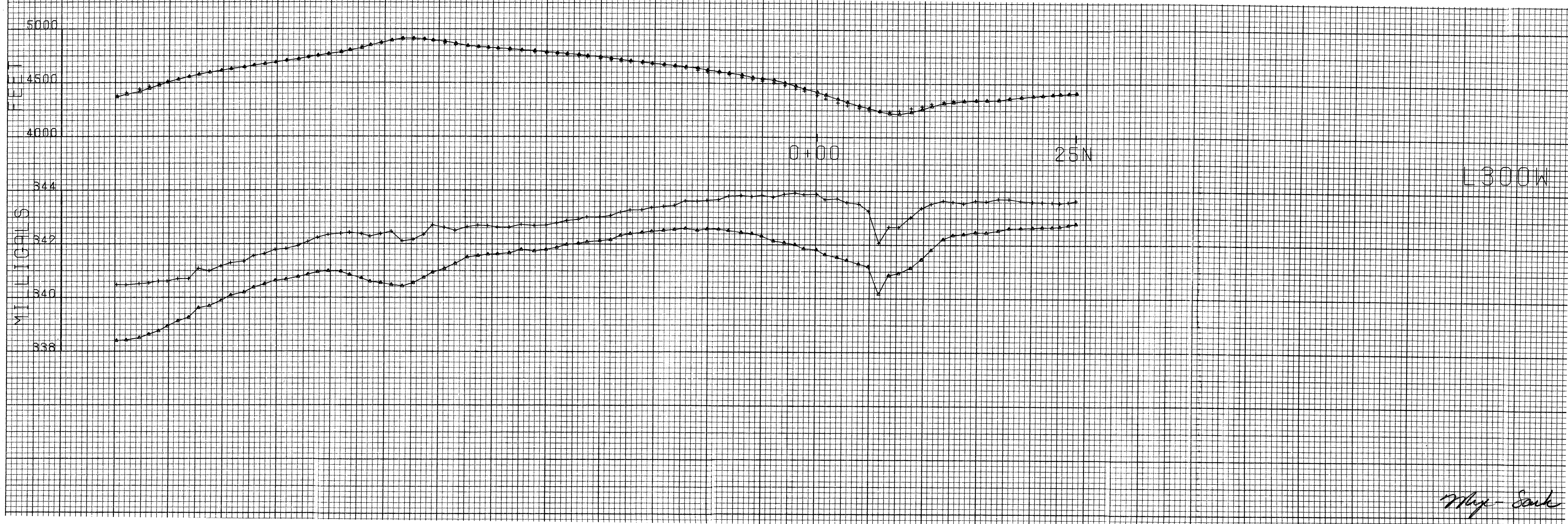
0+00

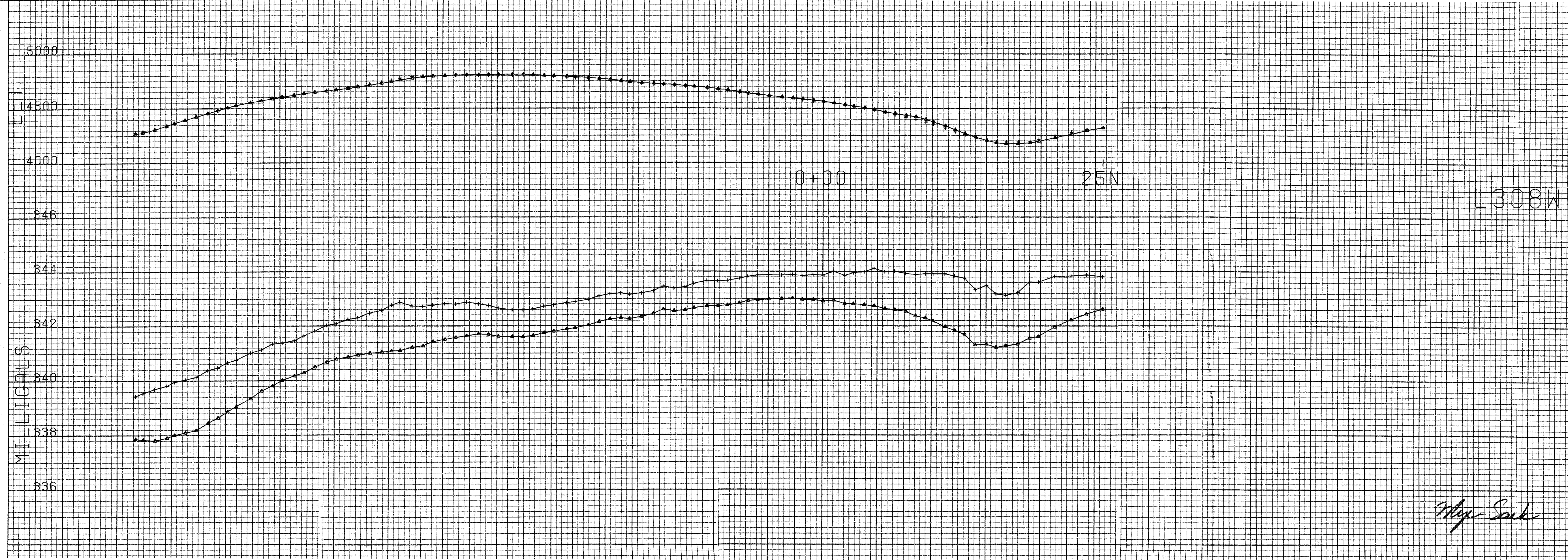
25N

L292W

Max. Sank

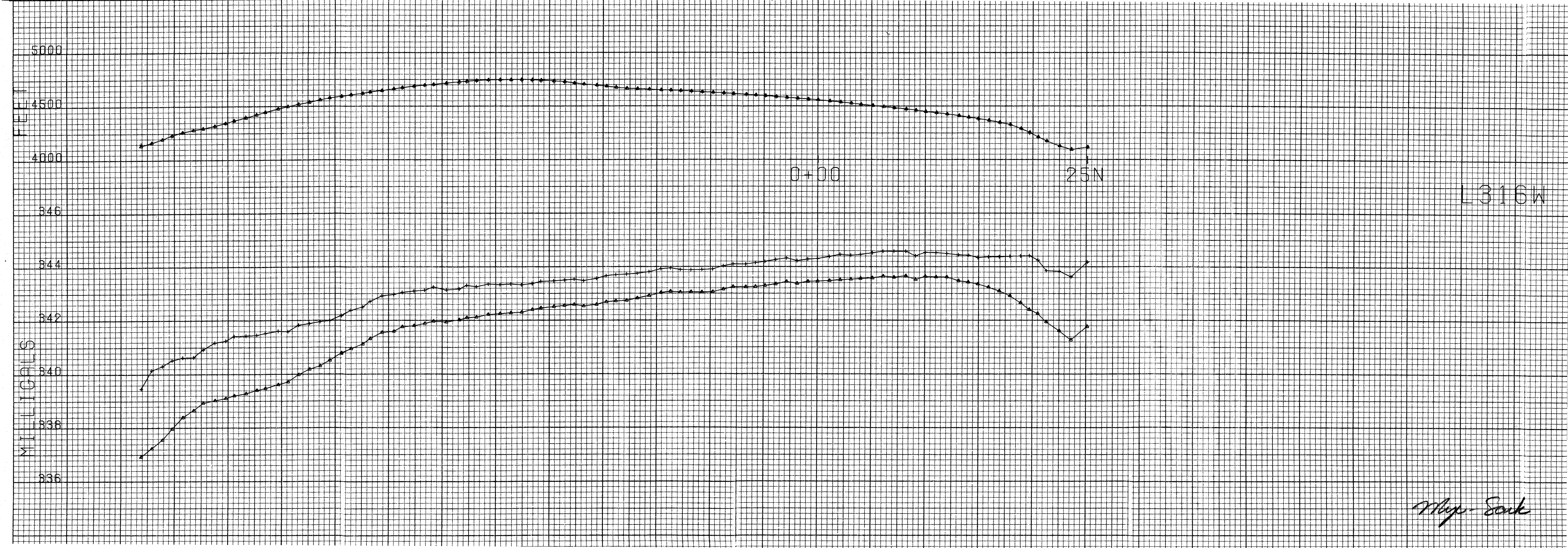






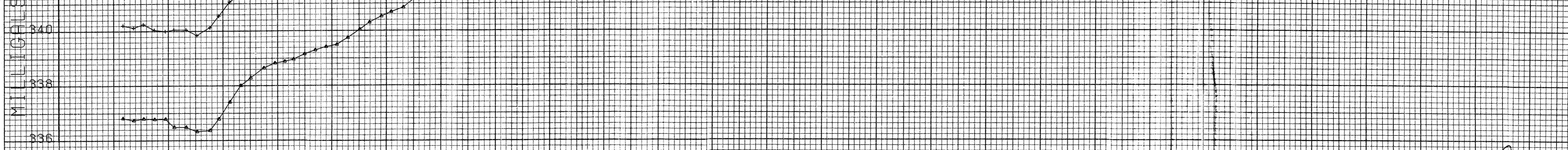
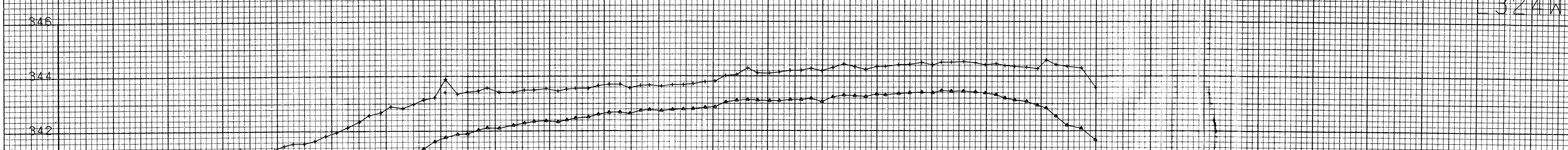
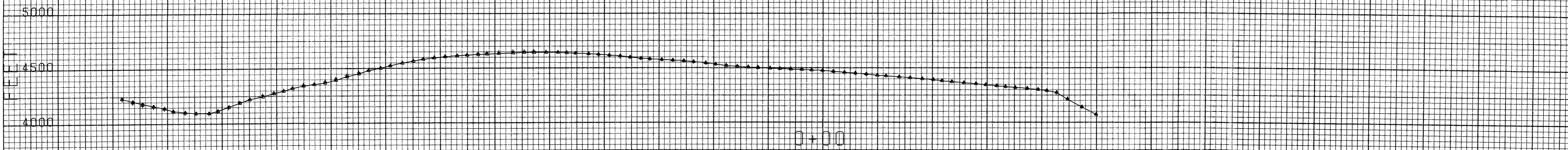
L308W

W. J. S. S. S.



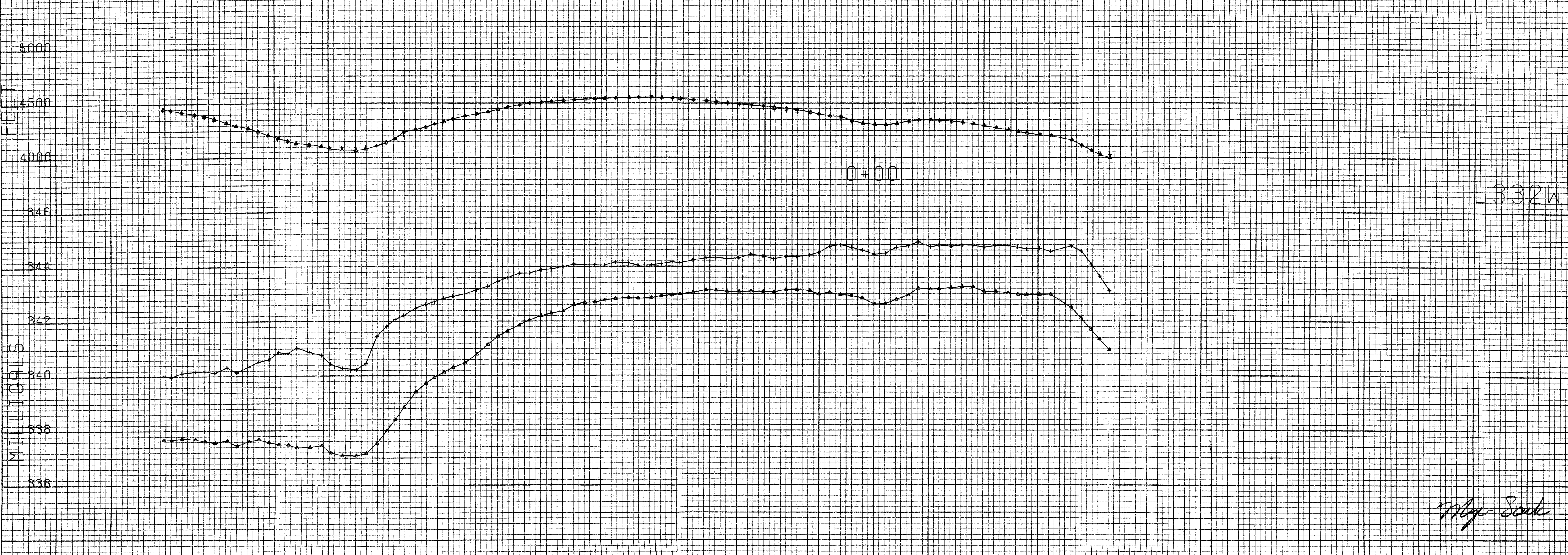
L316W

M. S. S. S.

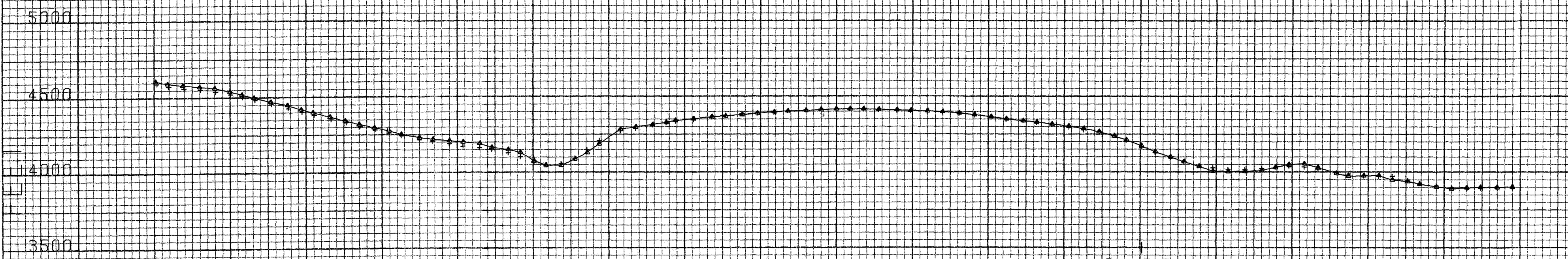


324W

Map Scale

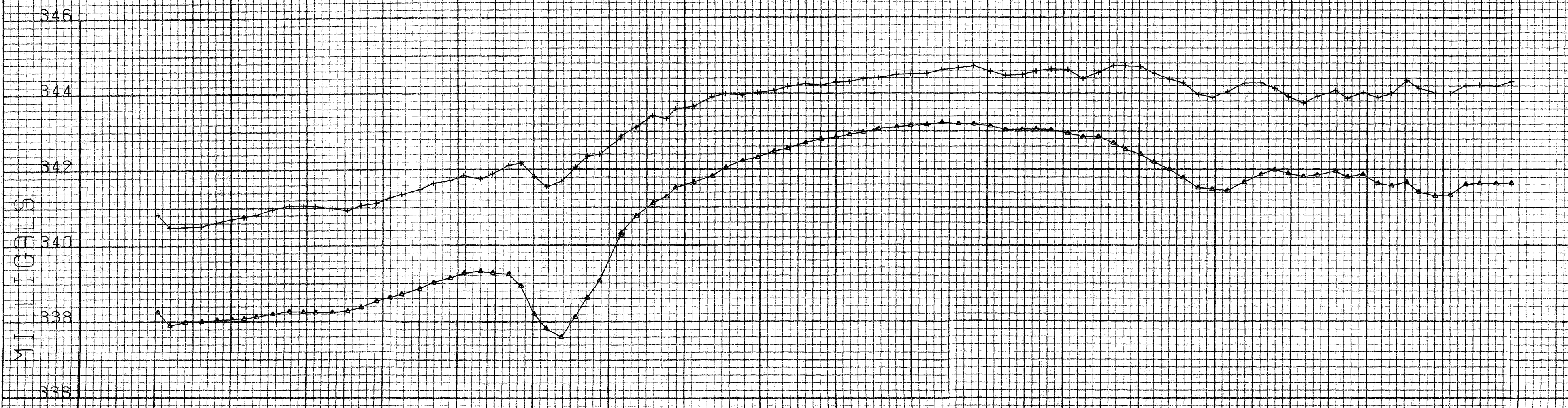


W. J. S. S. S.



0+00

L340W



May-Sark