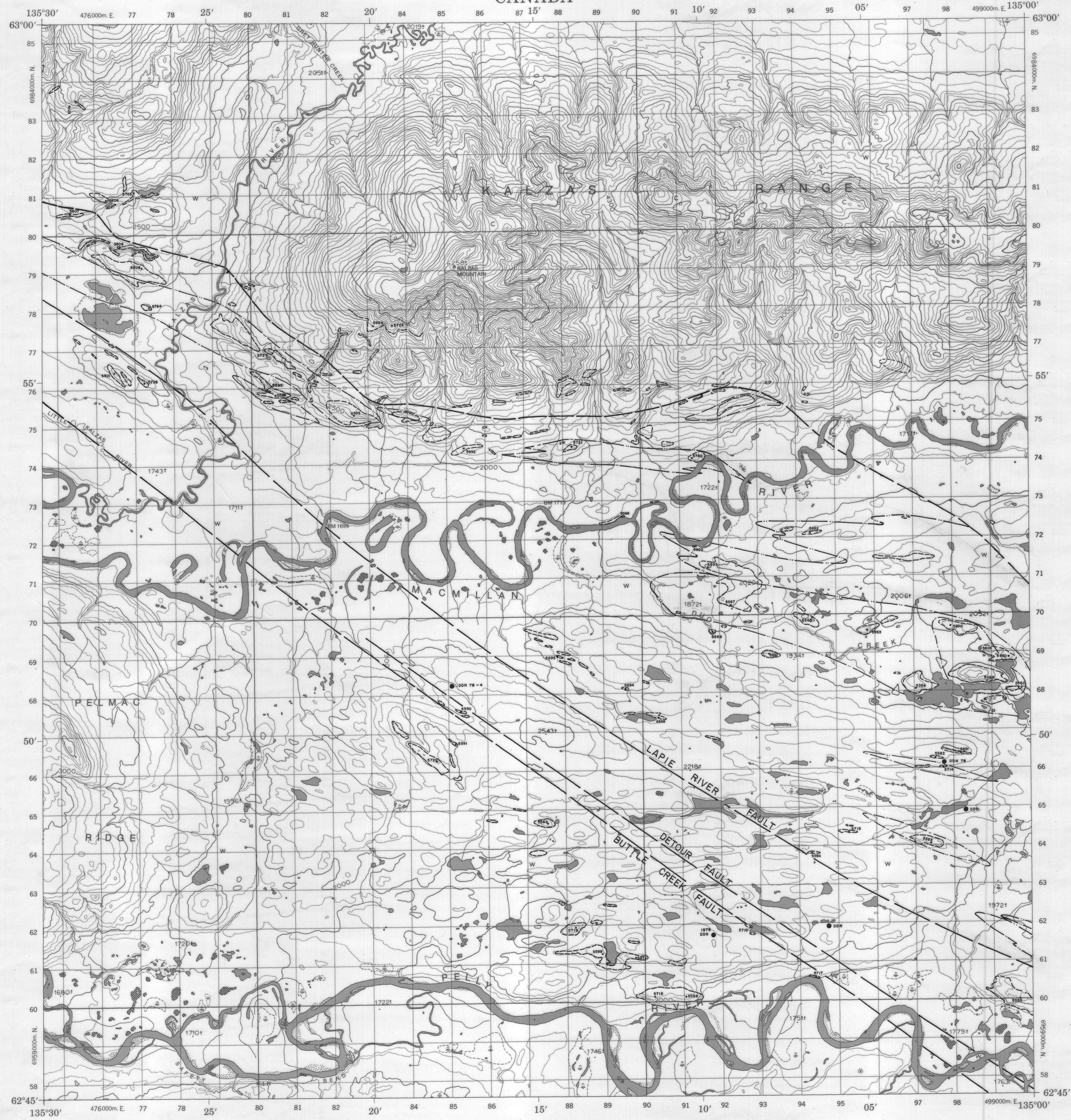


CANADA

EDITION 1 105 L/14



SAFETY PIN BEND
YUKON TERRITORY

PRODUCED BY SURVEYS AND MAPPING BRANCH
DEPARTMENT OF ENERGY, MINES AND RESOURCES
OTTAWA, K1P 8S1

COPIES MAY BE OBTAINED FROM THE MAP DISTRIBUTION
OFFICE, DEPARTMENT OF ENERGY, MINES AND RESOURCES, OTTAWA,
K1P 8S1

NORTH AMERICAN DATUM 1987
TRANSVERSE MERCATOR PROJECTION

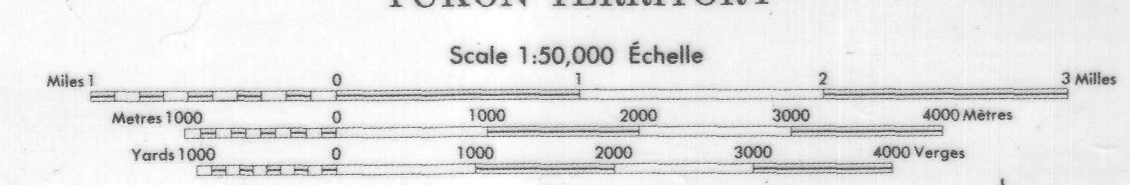
DES CARTES SONT EN VENTE AU BUREAU DE DISTRIBUTION
DES CARTES MINIERES DE L'ENERGIE, DES
MINES ET DES RESSOURCES, OTTAWA, K1P
8S1

SYSTEME DE REFERENCE GEODESIQUE NORD-AMERICAIN 1987
PROJECTION TRANSVERSE DE MERICATOR

ETABLI PAR LA DIRECTION DES LEVES ET DE LA
CARTOGRAPHIE, MINISTERE DE L'ENERGIE, DES
MINES ET DES RESSOURCES, OTTAWA, K1P
8S1

EQUIDISTANCE DES COURBES 50 PIEDS

© CANADA 1973, TOUS DROITS RESERVES.



CYPRUS ANVIL MINING CORPORATION	
GEOLOGICAL MAP	
REVISED:	NTS: 105-L-14 DRAWN BY: c/c/rwr DATE: 020360