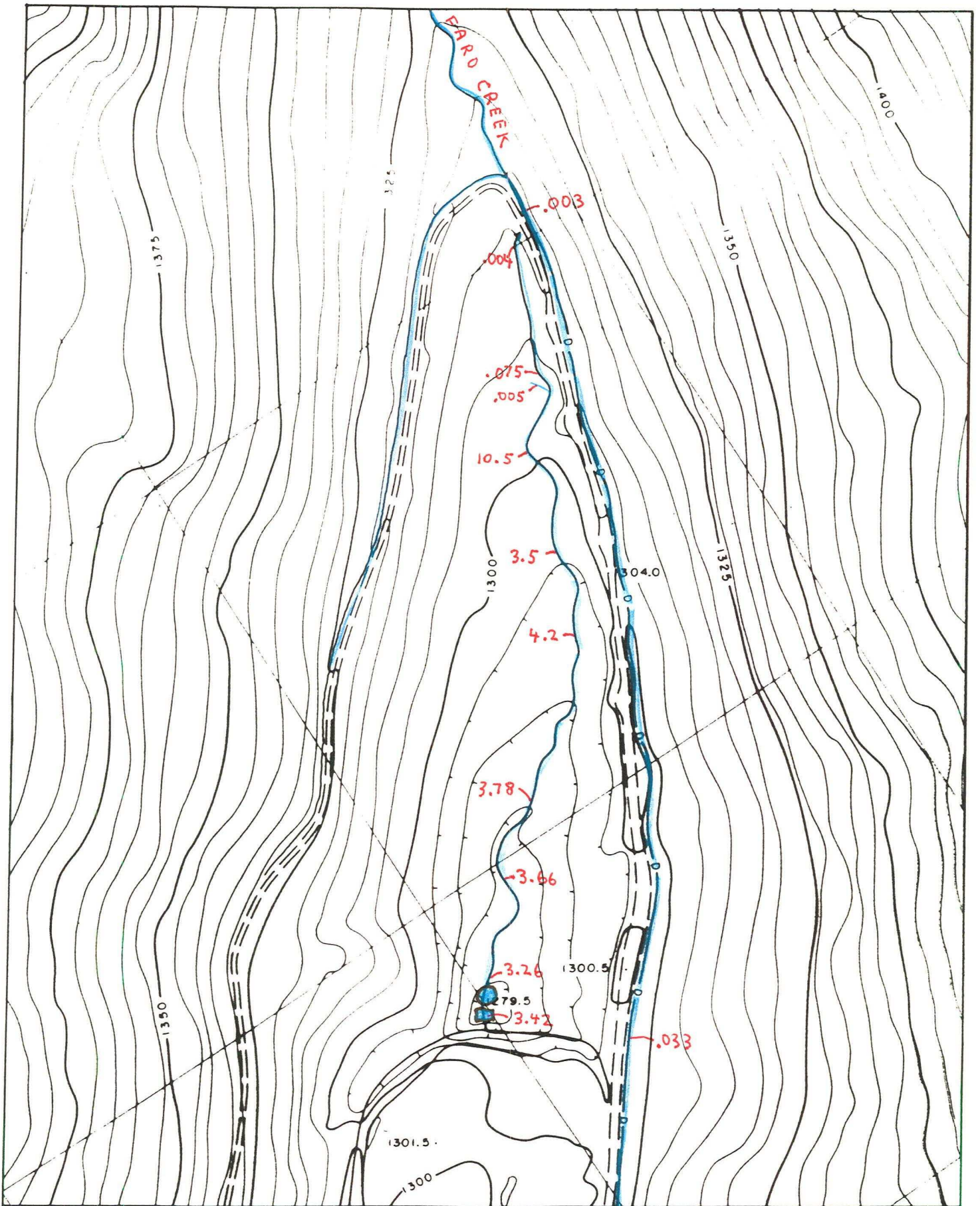


ZINC CONCENTRATIONS (MG/L)		
SITE	SEPT 26	OCT 21
Faro Creek u/s diversion	<0.002	
Small channel joining Faro Creek from west at the point of diversion	0.024	
Faro Diversion at top of swamp area		0.003
14: top of "swamp creek"		0.004
13: small tributary to "creek" from west side		0.005
12: larger east fork of "creek"		0.075
11: "creek" near road, by a rock pile		10.5
10: "creek"		3.50
9: "creek"		4.20
Small seep from Faro Diversion through road near site 9.	0.048	
8: "creek"		3.78
5: "creek" (by cat line), duplicate samples		3.61 3.70
2: inflow to pump pond (duplicate samples in Oct)	4.85	3.23 3.28
Outflow from pump pond	4.40	
1: cribbed sump	1.91	3.42
Faro Diversion at pumping point (duplicate samples)		0.035 0.031
Faro Diversion at lower weir	0.285	0.047
North Fork of Rose Creek (d/s rock drain in Sept, at road in Oct.)	0.042	0.042



FARO VALLEY SWAMP Zinc, total (mg/L)
 CURRAGH RESOURCES INC.

SCALE 1:5000

87-10-27

